

APPROVED  
BUREAU OF EXPLOSIVES

*A. J. Grossnick*  
MILITARY ASSISTANT  
DATE *5/21/64*

**LOADING & BRACING (TL & LTL) IN  
CLOSED OR OPEN TOP VAN TRAILERS  
OF DEMOLITION KIT, PROJECTED  
CHARGE, MI57, PACKED IN RELATED  
CONTAINERS**

LOADING & BRACING (TL & LTL) IN CLOSED  
OR OPEN TOP VAN TRAILERS OF DEMOLITION  
KIT, PROJECTED CHARGE, MI57, PACKED IN  
RELATED CONTAINERS

DESIGNER <b>JDS</b>	TRACER	ENGINEER <b>DIW/AGE</b>	SUBMITTED <i>Esche, E. C. Coast</i> COMMANDER, SAVANNAH ARMY DEPOT	
CHECKER <i>GWP</i>	CHECKER <b>EMG</b>	ENGINEER	EXAMINED & APPROVED <i>Raymond Hall</i> AMMUNITION PROCUREMENT & SUPPLY AGENCY APPROVED BY ORDER OF COMMANDER, ARMY MATERIEL COMMAND <i>Raymond Hall</i> C.O. G.S. ARMY SUPPLY & MAINTENANCE COMMAND MATERIEL COMMAND U.S.A.	
REVISIONS			8 FEBRUARY 1965	
			CLASS	DIVISION
			19	48
			DRAWING	FILE
			4046	IIM1001

DO NOT SCALE

## GENERAL NOTES

- A. LOADS AS SHOWN ARE BASED ON CLOSED OR OPEN TOP VAN TRAILERS WITH DIMENSIONS AS SHOWN ON PAGES DEPICTING EACH LOAD.
- B. GROSS WEIGHT AND AXLE DISTRIBUTION OF WEIGHT WILL BE IN ACCORDANCE WITH ORDM 3-4; IN ESSENCE; COMPLIANCE WITH "WEIGHT LAWS" IS A RESPONSIBILITY OF THE CARRIER; THE CARRIER WILL ADVISE THE SHIPPER OF THE APPLICABLE LOADING REQUIREMENTS; THE SHIPPER WILL LOAD ACCORDINGLY.
- C. CONTAINER DATA:
- | ITEM   | DIMENSIONS                        | WEIGHT (APPROX) |
|--|-----------------------------------|-----------------|
| ⊙ FUZE -----   | 13-3/4" L x 8-1/8" W x 9" H       | 30 LBS          |
| TAIL SECTION-----  | 112" L x 14-3/8" W x 19-1/2" H    | 294 LBS         |
| NOSE SECTION----   | 96-1/2" L x 14-1/2" W x 19-7/8" H | 235 LBS         |
| ● IMPACT FUZE-----   | 67-1/2" L x 14-5/8" W x 20-1/2" H | 250 LBS         |
| ● * CENTER LOADING SECTION   | 55-1/2" L x 14-3/8" W x 8-7/8" H  | 155 LBS         |
| * BODY SECTION-----  | 55-1/2" L x 14-3/8" W x 8-7/8" H  | 106 LBS         |
| * FOR PALLETIZATION OF THESE ITEMS SEE "PALLET DETAIL A" AND "PALLET DETAIL B", PAGE 20. |                                   |                 |
| ● THESE ITEMS ARE ICC CLASS "EXPLOSIVE BOMB".  |                                   |                 |
| ⊙ THIS ITEM IS AN ICC CLASS "EXPLOSIVE MINE".  |                                   |                 |
- D. SPECIFIED OUTLOADING PROCEDURES CAN ALSO BE UTILIZED FOR THE SHIPMENT OF THE DEPICTED CONTAINERS WHEN THEY ARE EMPTY OR LOADED WITH AN ITEM WHICH IS IDENTIFIED DIFFERENTLY BY NOMENCLATURE THAN THE ITEM DESIGNATED WITHIN THE DRAWING TITLE.
- E. THE NUMBER OF UNITS MAY BE ADJUSTED TO FIT THE VEHICLE CONCERNED OR THE QUANTITY TO BE SHIPPED; HOWEVER, THE APPROVED METHODS SHOWN HEREIN MUST BE FOLLOWED FOR BLOCKING, BRACING AND STAYING OF THESE ITEMS.
- F. FOR TRAILERS NOT EQUIPPED WITH REAR CORNER POSTS, REAR BLOCKING MUST CONTACT CLOSED DOORS.
- G. WHEN ANY STRAP IS SEALED AT AN END-OVER-END LAP JOINT, A MINIMUM OF TWO (2) SEALS WITH TWO (2) CRIMPS PER SEAL MUST BE USED.  
CAUTION: EXERCISE CARE WHEN TENSIONING TO PREVENT DAMAGE TO CONTAINERS.

## INDEX

### ITEM

### PAGE (S)

GENERAL NOTES AND MATERIAL SPECIFICATIONS -----	2
FUZE SECTION -----	3
TAIL SECTION -----	4
NOSE SECTION -----	5
IMPACT FUZE SECTION -----	6
CENTER LOADING AND/OR BODY SECTION -	7
CENTER LOADING AND/OR BODY SECTION, PALLETIZED-----	8
ONE DEMOLITION KIT -----	9
TWO DEMOLITION KITS 1-----	10
THREE DEMOLITION KITS -----	11
ONE DEMOLITION KIT, CENTER LOADING AND BODY SECTIONS PALLETIZED -----	12
TWO DEMOLITION KITS, CENTER LOADING AND BODY SECTIONS PALLETIZED -----	13
THREE DEMOLITION KITS, CENTER LOADING AND BODY SECTIONS PALLETIZED -----	14
TYPICAL LTL METHODS -----	15 & 16
DETAILS -----	17, 18, 19 & 20

#### NOTE ⊙:

WHEN EXCESS SPACE BETWEEN REAR GATE AND REAR CORNER POSTS AND/OR CLOSED DOORS IS 12" OR LESS, USE SOLID FILL, 4" WIDE MATERIAL x GATE HEIGHT x THICKNESS REQD TO CONTACT REAR CORNER POSTS AND/OR CLOSED DOORS. NAIL TO GATE UPRIGHTS AND/OR SELF W/10D NAILS. SEE PAGES 6, 8, 9, 10, 13 AND 14. SEE GENERAL NOTE "F".

#### NOTE ⊗:

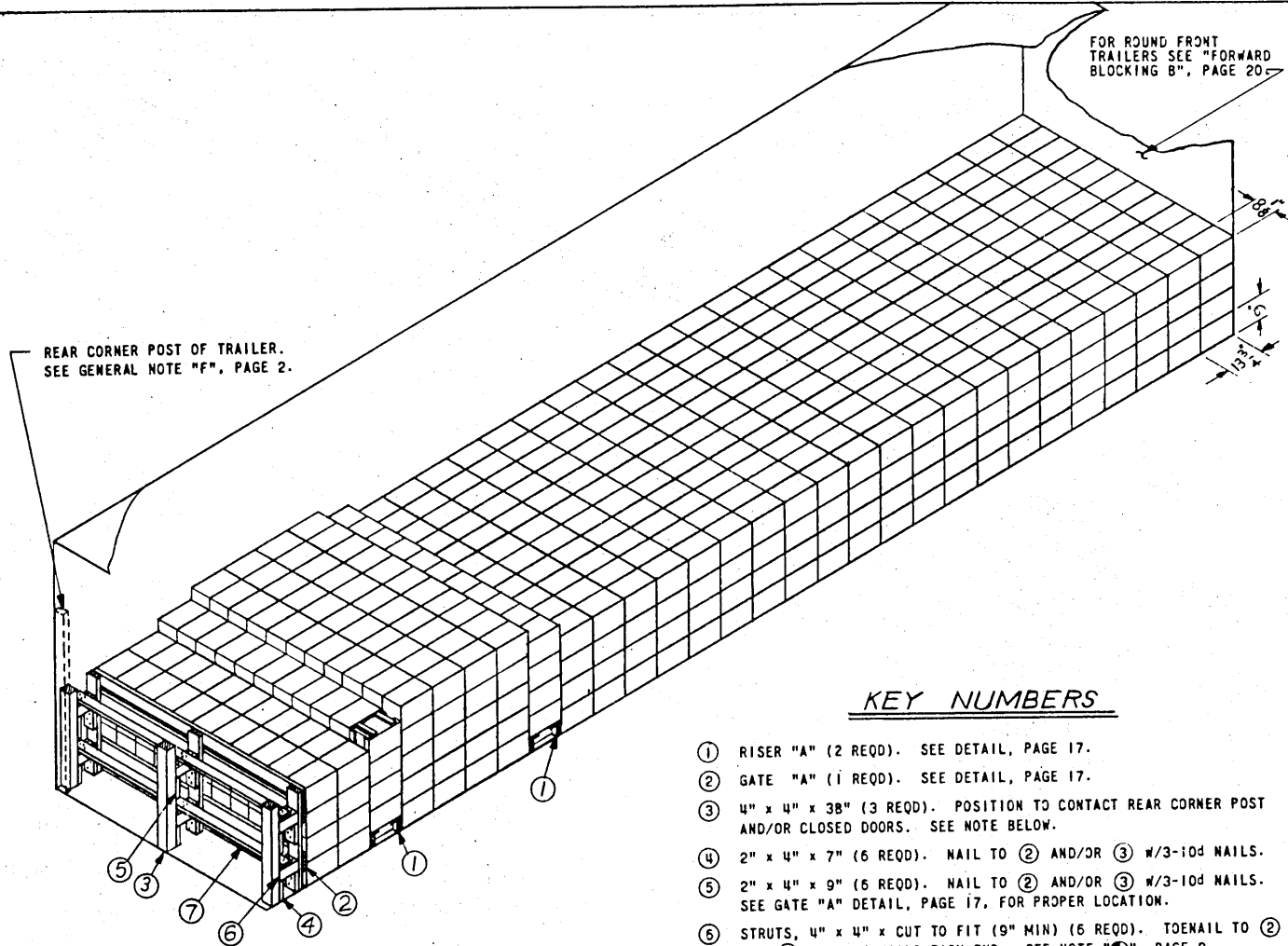
WHEN EXCESS SPACE BETWEEN REAR GATE AND REAR CORNER POSTS AND/OR CLOSED DOORS IS GREATER THAN 16" USE BLOCKING AS SHOWN FOR LOADS DEPICTED ON PAGES 3, 4, 5, 7, 11 AND 12 IN LIEU OF SOLID FILL MATERIAL SHOWN. SEE GENERAL NOTE "F".

## MATERIAL SPECIFICATIONS

- LUMBER: DUNNAGE LUMBER, FED SPEC MM-L-751, TM 715-5500-1
- NAILS: COMMON, CEMENT COATED, FED SPEC FF-N-105.  
ALT: ANNULAR-RING TYPE NAIL OF SAME SIZE.
- STRAPPING, STEEL: TYPE 1, CLASS "A" OR "C", FED SPEC 00-5-791.
- ANTI-CHAFING MATERIAL: NEUTRAL BARRIER MATERIAL MIL-B-121 OR EQUAL.
- PALLET: STANDARD, 40" x 48" 4-WAY PALLET, MIL-P-15011C.

FOR ROUND FRONT TRAILERS SEE "FORWARD BLOCKING B", PAGE 20.

REAR CORNER POST OF TRAILER. SEE GENERAL NOTE "F", PAGE 2.



KEY NUMBERS

- ① RISER "A" (2 REQD). SEE DETAIL, PAGE 17.
- ② GATE "A" (1 REQD). SEE DETAIL, PAGE 17.
- ③ 4" x 4" x 38" (3 REQD). POSITION TO CONTACT REAR CORNER POST AND/OR CLOSED DOORS. SEE NOTE BELOW.
- ④ 2" x 4" x 7" (6 REQD). NAIL TO ② AND/OR ③ w/3-10d NAILS.
- ⑤ 2" x 4" x 9" (6 REQD). NAIL TO ② AND/OR ③ w/3-10d NAILS. SEE GATE "A" DETAIL, PAGE 17, FOR PROPER LOCATION.
- ⑥ STRUTS, 4" x 4" x CUT TO FIT (9" MIN) (6 REQD). TOENAIL TO ② AND ③ w/2-16d NAILS EACH END. SEE NOTE "6", PAGE 2.
- ⑦ 2" x 4" x TRAILER WIDTH (CUT TO FIT) (2 REQD). NAIL TO ⑤ w/3-12d NAILS EACH JOINT.

ISOMETRIC VIEW

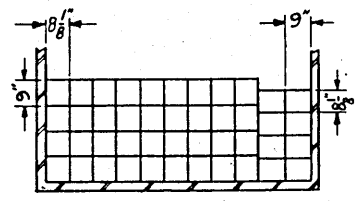
35'-0" LONG x 7'-6" WIDE TRAILER WITH WOOD, WOOD AND METAL OR METAL FLOOR.  
 A FULL LOAD MAY BE SHIPPED IN A SHORTER TRAILER BY POSITIONING RISER, PIECE ①, NEARER FRONT OF TRAILER, THEREBY INCREASING THE FIVE (5) HIGH PORTION OF LOAD.

NOTE:

WHEN USING SOLID FILL AS DESCRIBED IN NOTE "6", PAGE 2, DELETE PIECES ③ THRU ⑦.

BILL OF MATERIAL

LUMBER	LINEAL FEET	BOARD FEET
1" x 4"	30	10
2" x 4"	74	50
2" x 6"	15	15
4" x 4"	15	20
NAILS	NO. REQD	POUNDS
6d (2")	36	1/4
10d (3")	79	1-1/4
12d (3-1/4")	18	1/2
16d (3-1/2")	24	3/4



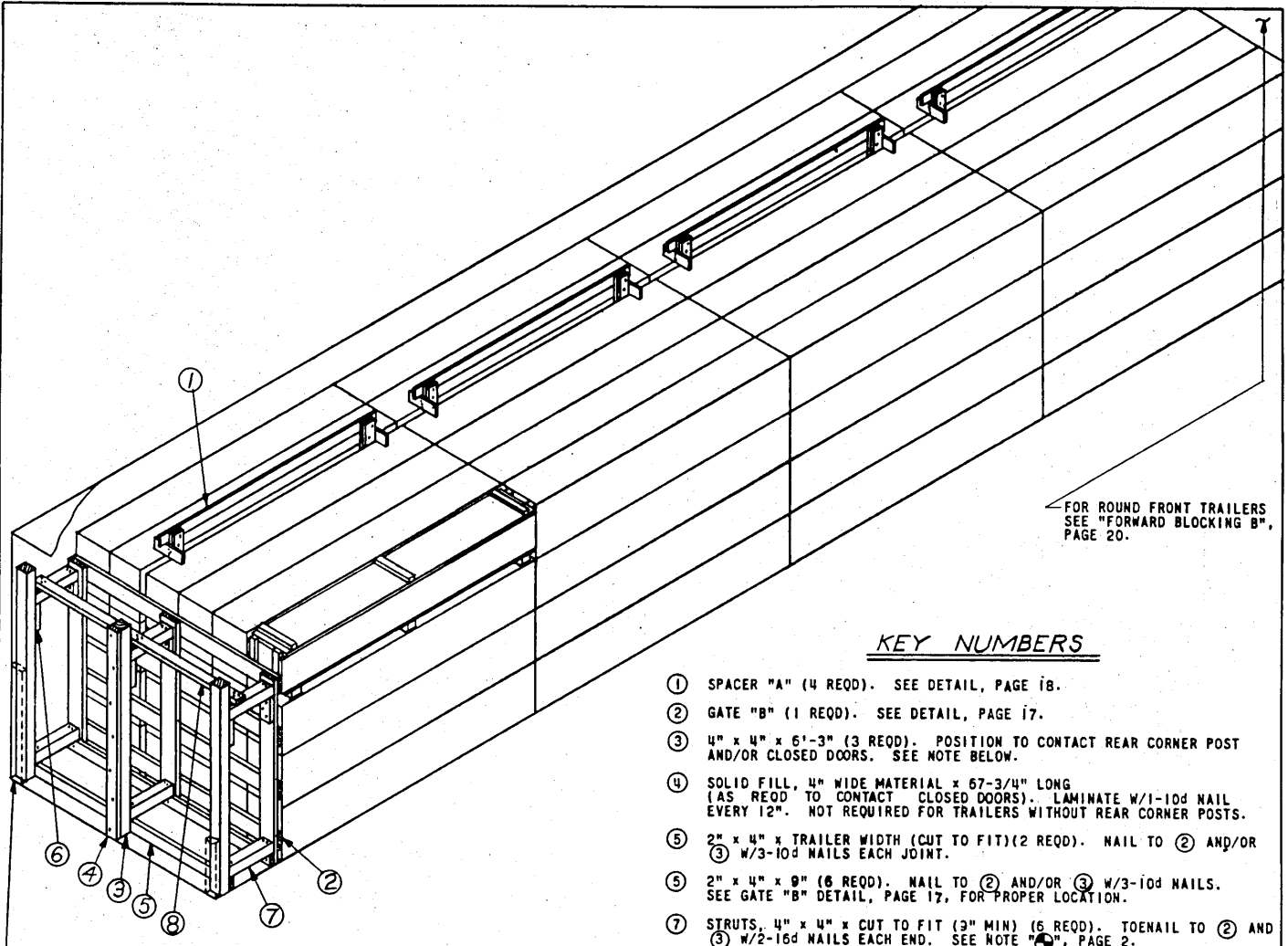
ALTERNATIVE LOAD

FOR TRAILERS 92" OR GREATER IN WIDTH. BLOCK SAME AS LOAD ABOVE.

LOAD AS SHOWN

ITEM	QUANTITY	WEIGHT. (APPROX)
FUZE-----	1,320	39,600 LBS
DUNNAGE-----		240 LBS
TOTAL WEIGHT -----		39,840 LBS (APPROX)

FUZE SECTION



FOR ROUND FRONT TRAILERS  
SEE "FORWARD BLOCKING B",  
PAGE 20.

KEY NUMBERS

- ① SPACER "A" (4 REQD). SEE DETAIL, PAGE 18.
- ② GATE "B" (1 REQD). SEE DETAIL, PAGE 17.
- ③ 4" x 4" x 6'-3" (3 REQD). POSITION TO CONTACT REAR CORNER POST AND/OR CLOSED DOORS. SEE NOTE BELOW.
- ④ SOLID FILL, 4" WIDE MATERIAL x 67-3/4" LONG (AS REQD TO CONTACT CLOSED DOORS). LAMINATE W/1-10d NAIL EVERY 12". NOT REQUIRED FOR TRAILERS WITHOUT REAR CORNER POSTS.
- ⑤ 2" x 4" x TRAILER WIDTH (CUT TO FIT)(2 REQD). NAIL TO ② AND/OR ③ W/3-10d NAILS EACH JOINT.
- ⑥ 2" x 4" x 9" (8 REQD). NAIL TO ② AND/OR ③ W/3-10d NAILS. SEE GATE "B" DETAIL, PAGE 17, FOR PROPER LOCATION.
- ⑦ STRUTS, 4" x 4" x CUT TO FIT (3" MIN) (6 REQD). TOENAIL TO ② AND ③ W/2-16d NAILS EACH END. SEE NOTE "G", PAGE 2.
- ⑧ 2" x 4" x TRAILER WIDTH (CUT TO FIT)(1 REQD). NAIL TO ⑦ W/3-12d NAILS EACH JOINT.

REAR CORNER POST OF TRAILER. SEE  
GENERAL NOTE "F", PAGE 2.

ISOMETRIC VIEW

40'-0" LONG x 7'-6" WIDE TRAILER WITH WOOD,  
WOOD AND METAL OR METAL FLOOR.

NOTE:

WHEN USING SOLID FILL MATERIAL AS DESCRIBED IN NOTE "G", PAGE 2,  
DELETE PIECES ③ THRU ⑧.

BILL OF MATERIAL

LUMBER	LINEAL FEET	BOARD FEET
1" x 4"	40	14
2" x 4"	146	98
2" x 6"	47	47
4" x 4"	27	36
NAILS		POUNDS
6d (2")	48	1/2
10d (3")	135	2-1/4
12d (3-1/4")	9	1/4
16d (3-1/2")	24	3/4

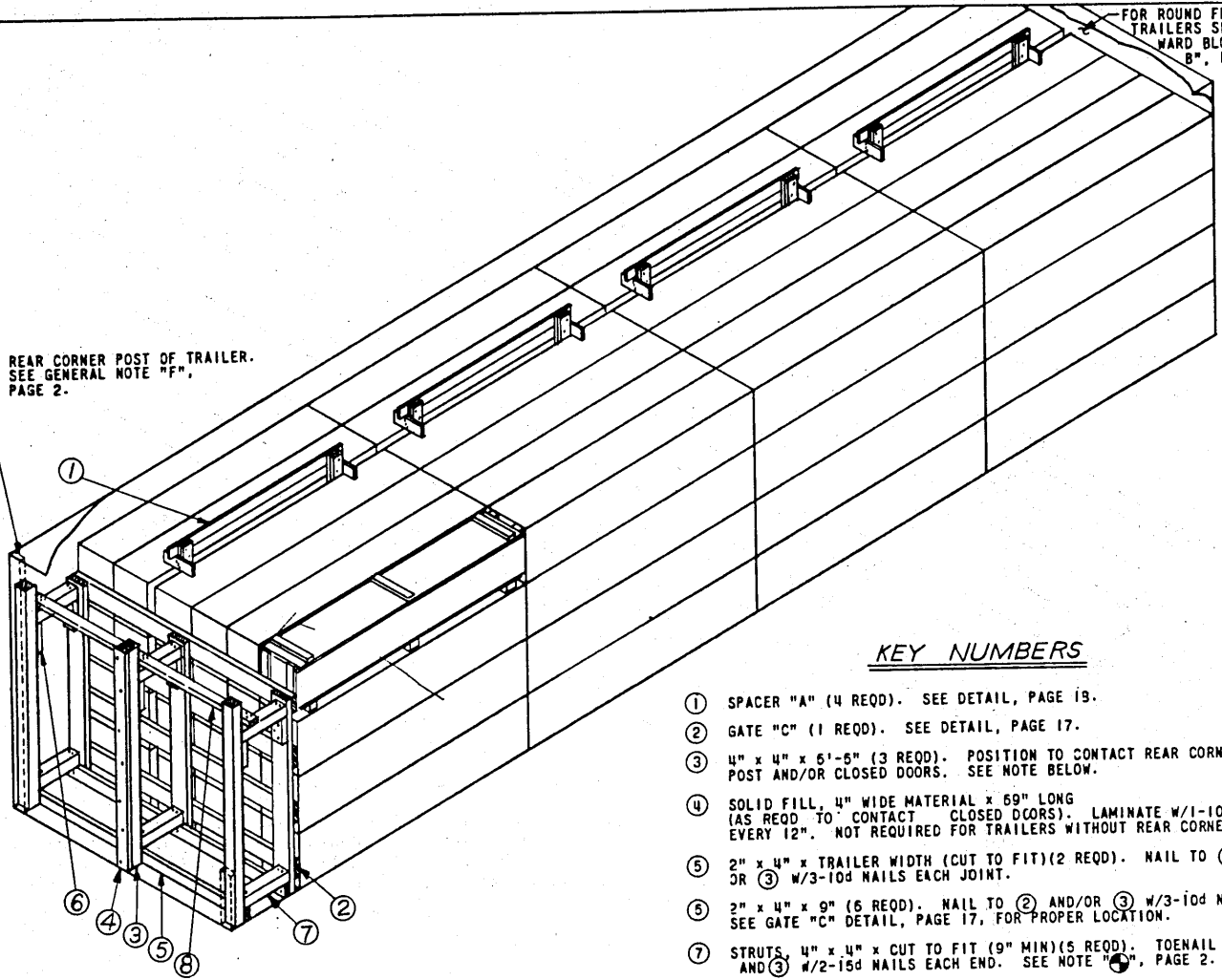
LOAD AS SHOWN

ITEM	QUANTITY	WEIGHT (APPROX)
TAIL SECTION	96	27,264 LBS
DUNNAGE		402 LBS
TOTAL WEIGHT		27,766 LBS (APPROX)

TAIL SECTION

FOR ROUND FRONT TRAILERS SEE "FORWARD BLOCKING B", PAGE 20.

REAR CORNER POST OF TRAILER. SEE GENERAL NOTE "F", PAGE 2.



KEY NUMBERS

- ① SPACER "A" (4 REQD). SEE DETAIL, PAGE 19.
- ② GATE "C" (1 REQD). SEE DETAIL, PAGE 17.
- ③ 4" x 4" x 6'-6" (3 REQD). POSITION TO CONTACT REAR CORNER POST AND/OR CLOSED DOORS. SEE NOTE BELOW.
- ④ SOLID FILL, 4" WIDE MATERIAL x 69" LONG (AS REQD TO CONTACT CLOSED DOORS). LAMINATE W/1-10d NAIL EVERY 12". NOT REQUIRED FOR TRAILERS WITHOUT REAR CORNER POSTS
- ⑤ 2" x 4" x TRAILER WIDTH (CUT TO FIT)(2 REQD). NAIL TO ② AND/OR ③ W/3-10d NAILS EACH JOINT.
- ⑥ 2" x 4" x 9" (6 REQD). NAIL TO ② AND/OR ③ W/3-10d NAILS. SEE GATE "C" DETAIL, PAGE 17, FOR PROPER LOCATION.
- ⑦ STRUTS, 4" x 4" x CUT TO FIT (9" MIN)(5 REQD). TOENAIL TO ② AND ③ W/2-15d NAILS EACH END. SEE NOTE "G", PAGE 2.
- ⑧ 2" x 4" x TRAILER WIDTH (CUT TO FIT)(1 REQD). NAIL TO ⑦ W/3-12d NAILS EACH JOINT.

ISOMETRIC VIEW

35'-0" LONG x 7'-6" WIDE TRAILER WITH WOOD, WOOD AND METAL OR METAL FLOOR.

NOTE:

WHEN USING SOLID FILL MATERIAL AS DESCRIBED IN NOTE "C" PAGE 2, DELETE PIECES ③ THRU ⑧

BILL OF MATERIAL

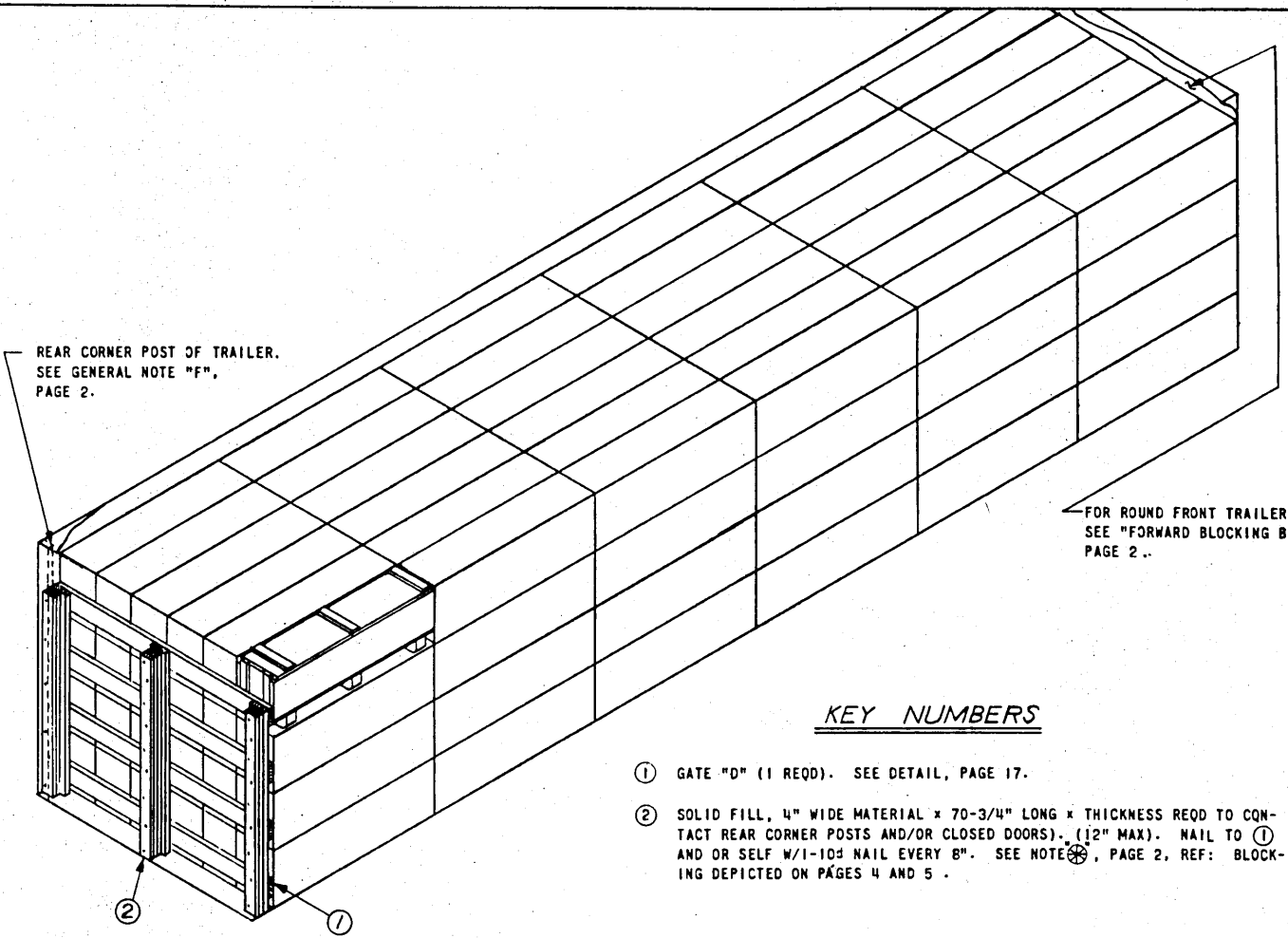
LUMBER	LINEAL FEET	BOARD FEET
1" x 4"	32	11
2" x 4"	146	98
2" x 6"	48	48
4" x 4"	29	39
NAILS	NO. REQD	POUNDS
5d (2")	48	1/2
10d (3")	143	2-1/4
12d (3-1/4")	9	1/4
15d (3-1/2")	24	3/4

LOAD AS SHOWN

ITEM	QUANTITY	WEIGHT, (APPROX)
NOSE SECTION	96	21,856 LBS
DUNNAGE		494 LBS
		TOTAL WEIGHT --22,150 LBS (APPROX)

NOSE SECTION

REAR CORNER POST OF TRAILER.  
SEE GENERAL NOTE "F",  
PAGE 2.



FOR ROUND FRONT TRAILERS  
SEE "FORWARD BLOCKING B",  
PAGE 2..

KEY NUMBERS

- ① GATE "D" (1 REQD). SEE DETAIL, PAGE 17.
- ② SOLID FILL, 4" WIDE MATERIAL x 70-3/4" LONG x THICKNESS REQD TO CONTACT REAR CORNER POSTS AND/OR CLOSED DOORS). (1/2" MAX). NAIL TO ① AND OR SELF W/1-10# NAIL EVERY 8". SEE NOTE ⓧ, PAGE 2, REF: BLOCKING DEPICTED ON PAGES 4 AND 5 .

ISOMETRIC VIEW

35'-0" LONG x 7'-6" WIDE TRAILER WITH  
WOOD, WOOD AND METAL OR METAL FLOOR.

BILL OF MATERIAL

LUMBER	LINEAL FEET	BOARD FEET
2" x 4"	42	28
2" x 6"	48	48
NAILS	NO. REQD	POUNDS
10# (3" )	99	1-3/4

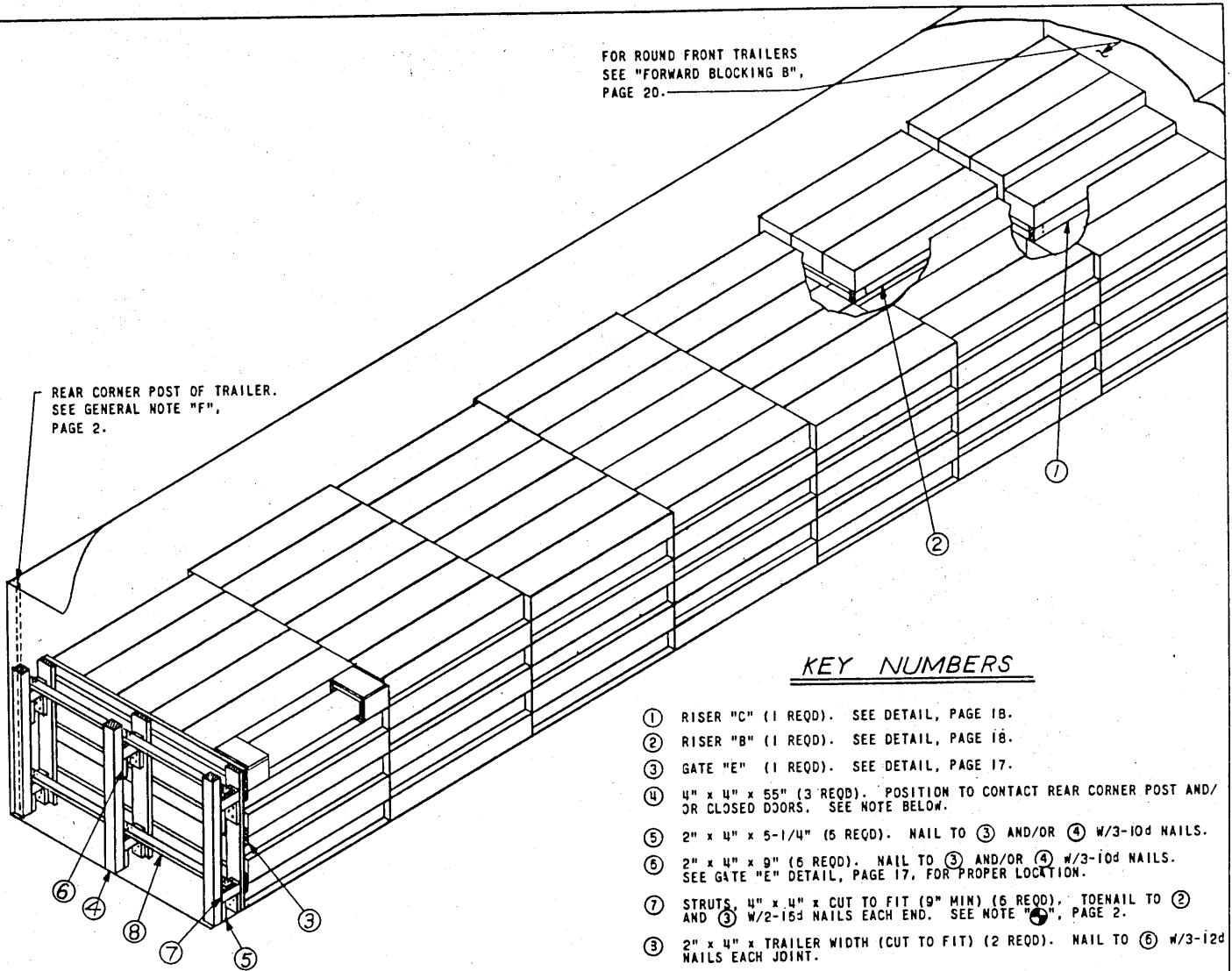
LOAD AS SHOWN

ITEM	QUANTITY	WEIGHT (APPROX)
IMPACT FUZE SECTION---	144 -----	36,000 LBS
DUNNAGE -----		192 LBS
TOTAL WEIGHT---		36,192 LBS (APPROX)

IMPACT FUZE SECTION

FOR ROUND FRONT TRAILERS  
SEE "FORWARD BLOCKING B",  
PAGE 20.

REAR CORNER POST OF TRAILER.  
SEE GENERAL NOTE "F",  
PAGE 2.



KEY NUMBERS

- ① RISER "C" (1 REQD). SEE DETAIL, PAGE 18.
- ② RISER "B" (1 REQD). SEE DETAIL, PAGE 18.
- ③ GATE "E" (1 REQD). SEE DETAIL, PAGE 17.
- ④ 4" x 4" x 55" (3 REQD). POSITION TO CONTACT REAR CORNER POST AND/OR CLOSED DOORS. SEE NOTE BELOW.
- ⑤ 2" x 4" x 5-1/4" (5 REQD). NAIL TO ③ AND/OR ④ w/3-10d NAILS.
- ⑥ 2" x 4" x 9" (6 REQD). NAIL TO ③ AND/OR ④ w/3-10d NAILS. SEE GATE "E" DETAIL, PAGE 17, FOR PROPER LOCATION.
- ⑦ STRUTS, 4" x 4" x CUT TO FIT (9" MIN) (6 REQD). TOENAIL TO ② AND ③ w/2-16d NAILS EACH END. SEE NOTE "G", PAGE 2.
- ⑧ 2" x 4" x TRAILER WIDTH (CUT TO FIT) (2 REQD). NAIL TO ⑥ w/3-12d NAILS EACH JOINT.

ISOMETRIC VIEW

40'-0" LONG x 7'-5" WIDE TRAILER WITH WOOD,  
WOOD AND METAL OR METAL FLOOR.

NOTE:

WHEN USING SOLID FILL MATERIAL AS DESCRIBED IN NOTE "G", PAGE 2.  
DELETE PIECES ④ THRU ⑧.

BILL OF MATERIAL

LUMBER	LINEAL FEET	BOARD FEET
2" x 4"	61	41
2" x 6"	36	36
4" x 4"	19	26
NAILS	NO. REQD	POUNDS
10d (3")	88	1-1/2
12d (3-1/4")	18	1/2
16d (3-1/2")	24	3/4

LOAD AS SHOWN

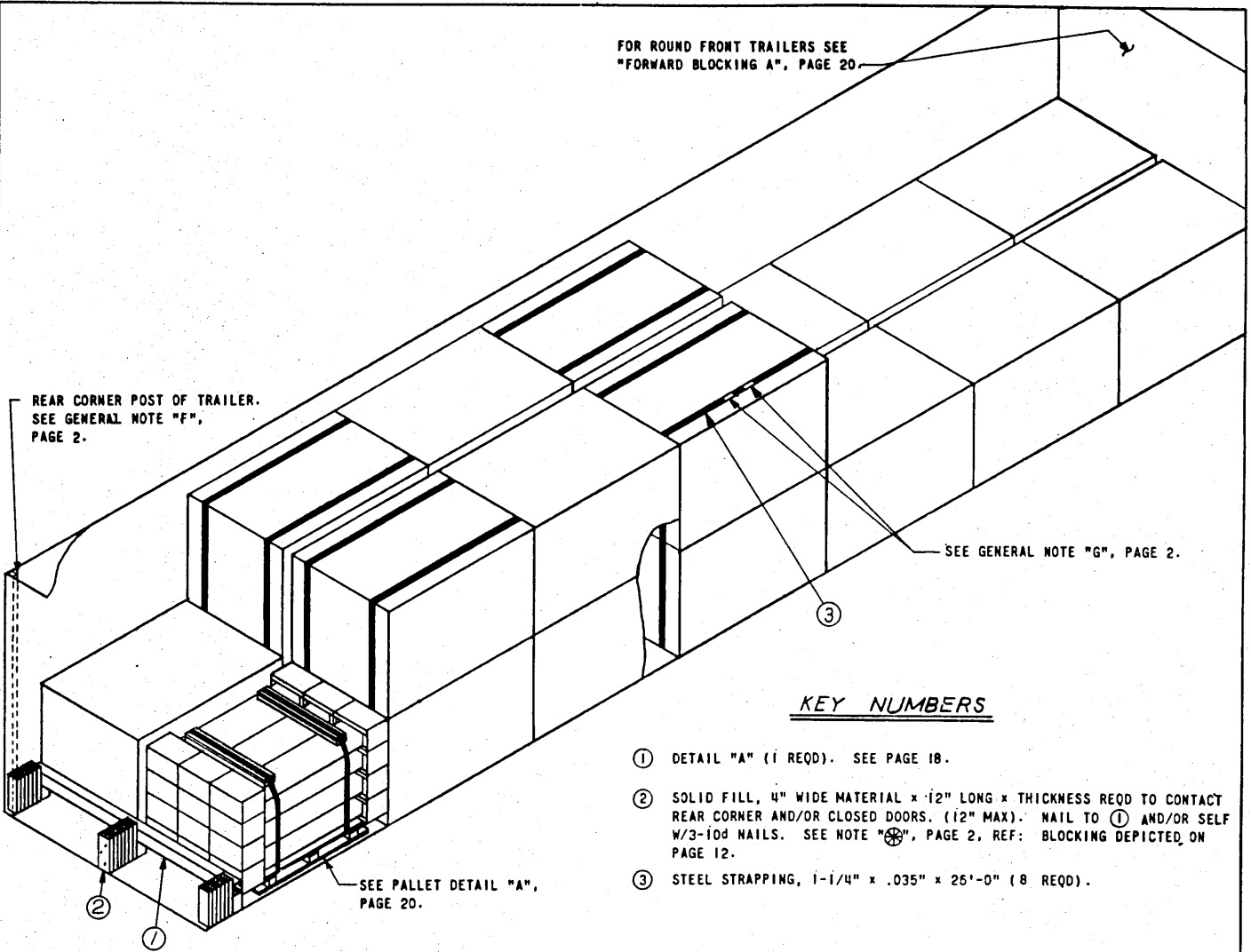
ITEM	QUANTITY	WEIGHT (APPROX)
CENTER LOADING SECTION	255	39,525 LBS
DUNNAGE		261 LBS
TOTAL WEIGHT		39,786 LBS (APPROX)
CENTER LOADING AND/OR BODY SECTION		27,030 LBS (APPROX)

CENTER LOADING AND/OR BODY SECTION

FOR ROUND FRONT TRAILERS SEE  
"FORWARD BLOCKING A", PAGE 20.

REAR CORNER POST OF TRAILER.  
SEE GENERAL NOTE "F",  
PAGE 2.

SEE GENERAL NOTE "G", PAGE 2.



KEY NUMBERS

- ① DETAIL "A" (1 REQD). SEE PAGE 18.
- ② SOLID FILL, 4" WIDE MATERIAL x 12" LONG x THICKNESS REQD TO CONTACT REAR CORNER AND/OR CLOSED DOORS. (12" MAX). NAIL TO ① AND/OR SELF W/3-10d NAILS. SEE NOTE "G", PAGE 2, REF: BLOCKING DEPICTED ON PAGE 12.
- ③ STEEL STRAPPING, 1-1/4" x .035" x 25'-0" (8 REQD).

ISOMETRIC VIEW

40'-0" LONG x 7'-6" WIDE TRAILER WITH  
WOOD, WOOD AND METAL OR METAL FLOOR.

BILL OF MATERIAL

LUMBER	LINEAL FEET	BOARD FEET
2" x 4"	19	13
4" x 4"	9	12
NAILS	NO. REQD	POUNDS
10d (3")	48	3/4
12d (3-1/4")	18	1/2
STRAPPING, STEEL, 1-1/4" x .035" --- 200' REQD -- 30 LBS		

LOAD AS SHOWN

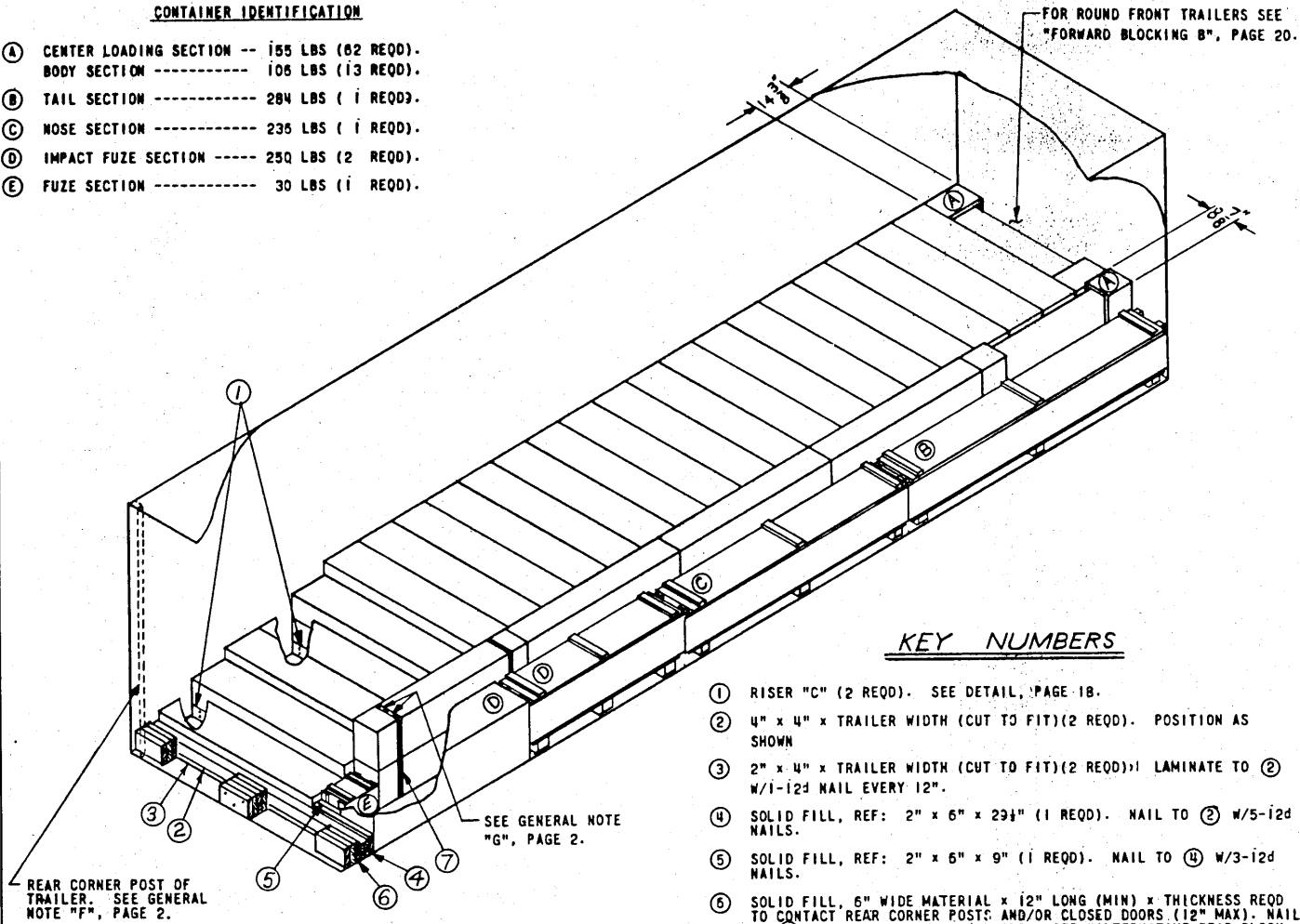
ITEM	QUANTITY	WEIGHT (APPROX)
CENTER LOADING SECTION, PALLETIZED	20	39,260 LBS
DUNNAGE		94 LBS
<b>TOTAL WEIGHT</b>		<b>39,354 LBS (APPROX)</b>
<b>CENTER LOADING AND/OR BODY SECTION, PALLETIZED</b>		<b>BODY SECTION, PALLETIZED - 27,500 LBS (APPROX)</b>



**CONTAINER IDENTIFICATION**

- Ⓐ CENTER LOADING SECTION -- 155 LBS (82 REQD).
- BODY SECTION ----- 106 LBS (13 REQD).
- Ⓑ TAIL SECTION ----- 284 LBS (1 REQD).
- Ⓒ NOSE SECTION ----- 236 LBS (1 REQD).
- Ⓓ IMPACT FUZE SECTION ----- 250 LBS (2 REQD).
- Ⓔ FUZE SECTION ----- 30 LBS (1 REQD).

FOR ROUND FRONT TRAILERS SEE "FORWARD BLOCKING B", PAGE 20.



**KEY NUMBERS**

- ① RISER "C" (2 REQD). SEE DETAIL, PAGE 18.
- ② 4" x 4" x TRAILER WIDTH (CUT TO FIT)(2 REQD). POSITION AS SHOWN
- ③ 2" x 4" x TRAILER WIDTH (CUT TO FIT)(2 REQD); LAMINATE TO ② W/1-12d NAIL EVERY 12".
- ④ SOLID FILL, REF: 2" x 6" x 29 1/2" (1 REQD). NAIL TO ② W/5-12d NAILS.
- ⑤ SOLID FILL, REF: 2" x 6" x 9" (1 REQD). NAIL TO ④ W/3-12d NAILS.
- ⑥ SOLID FILL, 6" WIDE MATERIAL x 12" LONG (MIN) x THICKNESS REQD TO CONTACT REAR CORNER POSTS AND/OR CLOSED DOORS (12" MAX). NAIL TO ② AND OR SELF W/3-10d NAILS. SEE "ALTERNATIVE REAR BLOCKING" BELOW.
- ⑦ STEEL STRAPPING, 1-1/4" x .035" x 8'-0" (2 REQD).

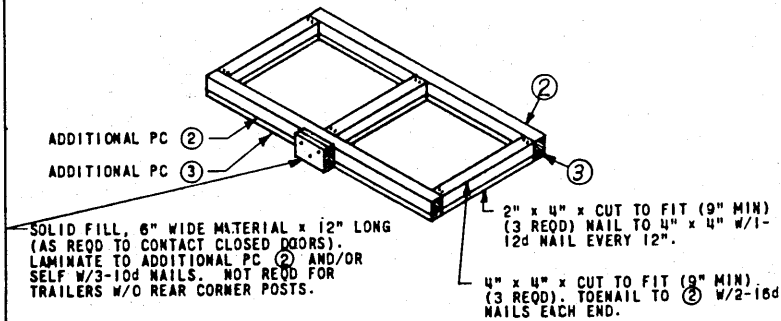
REAR CORNER POST OF TRAILER. SEE GENERAL NOTE "F", PAGE 2.

**ISOMETRIC VIEW**

30'-0" LONG x 7'-6" WIDE TRAILER WITH WOOD, WOOD AND METAL OR METAL FLOOR.

**BILL OF MATERIAL**

LUMBER	LINEAL FEET	BOARD FEET
2" x 4"	41	28
2" x 6"	5	8
4" x 4"	15	20
NAILS		POUNDS
10d (3")	28	1/2
12d (3 1/4")	24	1/2
STRAPPING, STEEL, 1-1/4" x .035"-----15'-0" REQD-- 2 LBS		



**ALTERNATIVE REAR BLOCKING**

TO BE USED WHEN EXCESS SPACE BETWEEN PIECES ② & ③ AND REAR CORNER POSTS AND/OR CLOSED DOORS IS GREATER THAN 12".

**LOAD AS SHOWN**

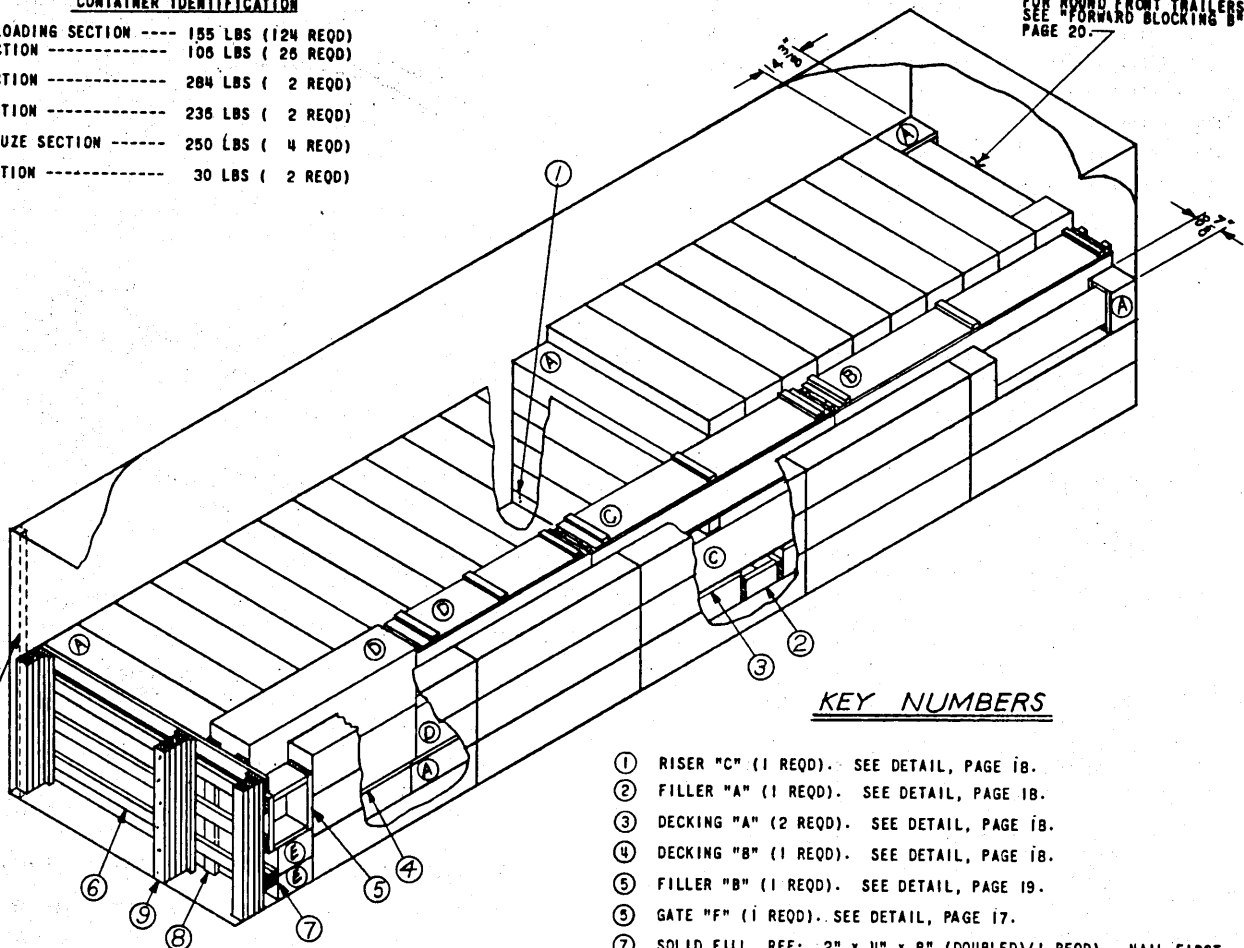
ITEM	QUANTITY	WEIGHT (APPROX)
DEMOLITION KIT	1	12,038 LBS
DUNNAGE		141 LBS
<b>TOTAL WEIGHT</b>		<b>12,179 LBS (APPROX)</b>

**ONE DEMOLITION KIT**

**CONTAINER IDENTIFICATION**

- (A) CENTER LOADING SECTION ----- 155 LBS (124 REQD)  
BODY SECTION ----- 106 LBS ( 26 REQD)
- (B) TAIL SECTION ----- 284 LBS ( 2 REQD)
- (C) NOSE SECTION ----- 236 LBS ( 2 REQD)
- (D) IMPACT FUZE SECTION ----- 250 LBS ( 4 REQD)
- (E) FUZE SECTION ----- 30 LBS ( 2 REQD)

FOR ROUND FRONT TRAILERS,  
SEE "FORWARD BLOCKING B",  
PAGE 20.



**KEY NUMBERS**

- ① RISER "C" (1 REQD). SEE DETAIL, PAGE 18.
- ② FILLER "A" (1 REQD). SEE DETAIL, PAGE 18.
- ③ DECKING "A" (2 REQD). SEE DETAIL, PAGE 18.
- ④ DECKING "B" (1 REQD). SEE DETAIL, PAGE 18.
- ⑤ FILLER "B" (1 REQD). SEE DETAIL, PAGE 19.
- ⑥ GATE "F" (1 REQD). SEE DETAIL, PAGE 17.
- ⑦ SOLID FILL, REF: 2" x 4" x 8" (DOUBLED)(1 REQD). NAIL FIRST PIECE TO ⑥ W/3- 10d NAILS. NAIL SECOND PIECE TO FIRST IN LIKE MANNER.
- ⑧ SOLID FILL, REF: 2" x 4" x 37-1/2" (2 REQD). NAIL TO ⑥ W/3-10d NAILS EACH JOINT.
- ⑨ SOLID FILL, 4" WIDE MATERIAL x 44-1/2" LONG x THICKNESS REQD TO CONTACT REAR CORNER POSTS AND/OR CLOSED DOORS (12" MAX). NAIL TO ⑤ AND OR SELF W/1-10d NAIL EVERY 8". SEE NOTE ⑩, PAGE 2, REF: BLOCKING DEPICTED ON PAGE 4.

REAR CORNER POST OF TRAILER.  
SEE GENERAL NOTE "F", PAGE 2.

**ISOMETRIC VIEW**

30'-0" LONG x 7'-5" WIDE TRAILER  
WITH WOOD, WOOD AND METAL OR METAL  
FLOOR.

**BILL OF MATERIAL**

LUMBER	LINEAL FEET	BOARD FEET
1" x 4"	8	3
2" x 4"	142	95
2" x 6"	15	15
2" x 8"	5	8
NAILS	NO. REQD	POUNDS
6d (2")	35	1/4
10d (3")	158	2-1/2

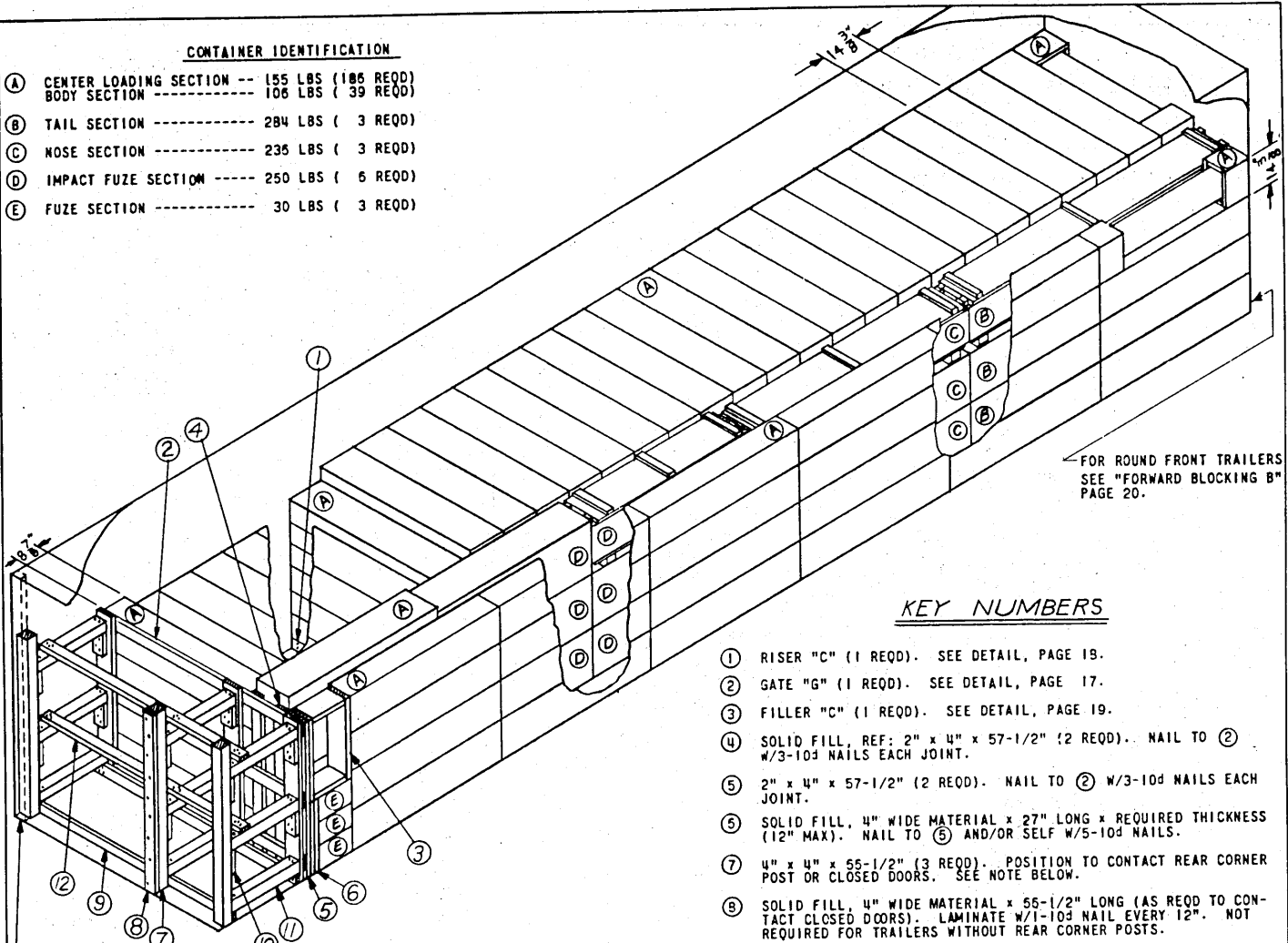
**LOAD AS SHOWN**

ITEM	QUANTITY	WEIGHT (APPROX)
DEMOLITION KIT -----	2 -----	24,076 LBS
DUNNAGE -----		308 LBS
<b>TOTAL WEIGHT -----</b>		<b>24,384 LBS (APPROX)</b>

**TWO DEMOLITION KITS**

**CONTAINER IDENTIFICATION**

- Ⓐ CENTER LOADING SECTION -- 155 LBS (105 REQD)  
BODY SECTION ----- 106 LBS ( 39 REQD)
- Ⓑ TAIL SECTION ----- 284 LBS ( 3 REQD)
- Ⓒ NOSE SECTION ----- 235 LBS ( 3 REQD)
- Ⓓ IMPACT FUZE SECTION ----- 250 LBS ( 6 REQD)
- Ⓔ FUZE SECTION ----- 30 LBS ( 3 REQD)



REAR CORNER POST OF TRAILER.  
SEE GENERAL NOTE "F", PAGE 2.

**ISOMETRIC VIEW**

38'-0" LONG x 7'-6" WIDE TRAILER WITH  
WOOD, WOOD AND METAL OR METAL FLOOR.

FOR ROUND FRONT TRAILERS  
SEE "FORWARD BLOCKING B"  
PAGE 20.

**KEY NUMBERS**

- ① RISER "C" (1 REQD). SEE DETAIL, PAGE 19.
- ② GATE "G" (1 REQD). SEE DETAIL, PAGE 17.
- ③ FILLER "C" (1 REQD). SEE DETAIL, PAGE 19.
- ④ SOLID FILL, REF: 2" x 4" x 57-1/2" (2 REQD). NAIL TO ② W/3-10d NAILS EACH JOINT.
- ⑤ 2" x 4" x 57-1/2" (2 REQD). NAIL TO ② W/3-10d NAILS EACH JOINT.
- ⑥ SOLID FILL, 4" WIDE MATERIAL x 27" LONG x REQUIRED THICKNESS (12" MAX). NAIL TO ⑤ AND/OR SELF W/5-10d NAILS.
- ⑦ 4" x 4" x 55-1/2" (3 REQD). POSITION TO CONTACT REAR CORNER POST OR CLOSED DOORS. SEE NOTE BELOW.
- ⑧ SOLID FILL, 4" WIDE MATERIAL x 55-1/2" LONG (AS REQD TO CONTACT CLOSED DOORS). LAMINATE W/1-10d NAIL EVERY 12". NOT REQUIRED FOR TRAILERS WITHOUT REAR CORNER POSTS.
- ⑨ 2" x 4" x TRAILER WIDTH (CUT TO FIT)(2 REQD). NAIL TO ② AND ⑦ W/3-10d NAILS EACH JOINT.
- ⑩ 2" x 4" x 9" (12 REQD). NAIL TO ② AND/OR ⑦ W/3-10d NAILS. SEE GATE "G" DETAIL, PAGE 17. FOR PROPER LOCATION.
- ⑪ STRUTS, 4" x 4" x CUT TO FIT (9" MIN)(9 REQD). TOENAIL TO ② AND ⑦ W/2-15d NAILS EACH END. SEE NOTE "G", PAGE 2.
- ⑫ 2" x 4" x TRAILER WIDTH (CUT TO FIT)(2 REQD). NAIL TO ⑪ W/3-12d NAILS EACH JOINT.

NOTE: WHEN USING SOLID FILL MATERIAL AS DESCRIBED IN NOTE ⑥, PAGE 2, DELETE PIECES ⑦ THRU ⑫.

**BILL OF MATERIAL**

LUMBER	LINEAL FEET	BOARD FEET
2" x 4"	123	86
2" x 6"	15	15
2" x 9"	9	11
4" x 4"	17	23
NAILS	NO. REQD	POUNDS
10d (3")	154	2-1/2
12d (3 1/4")	18	1/2
16d (3 1/2")	36	1

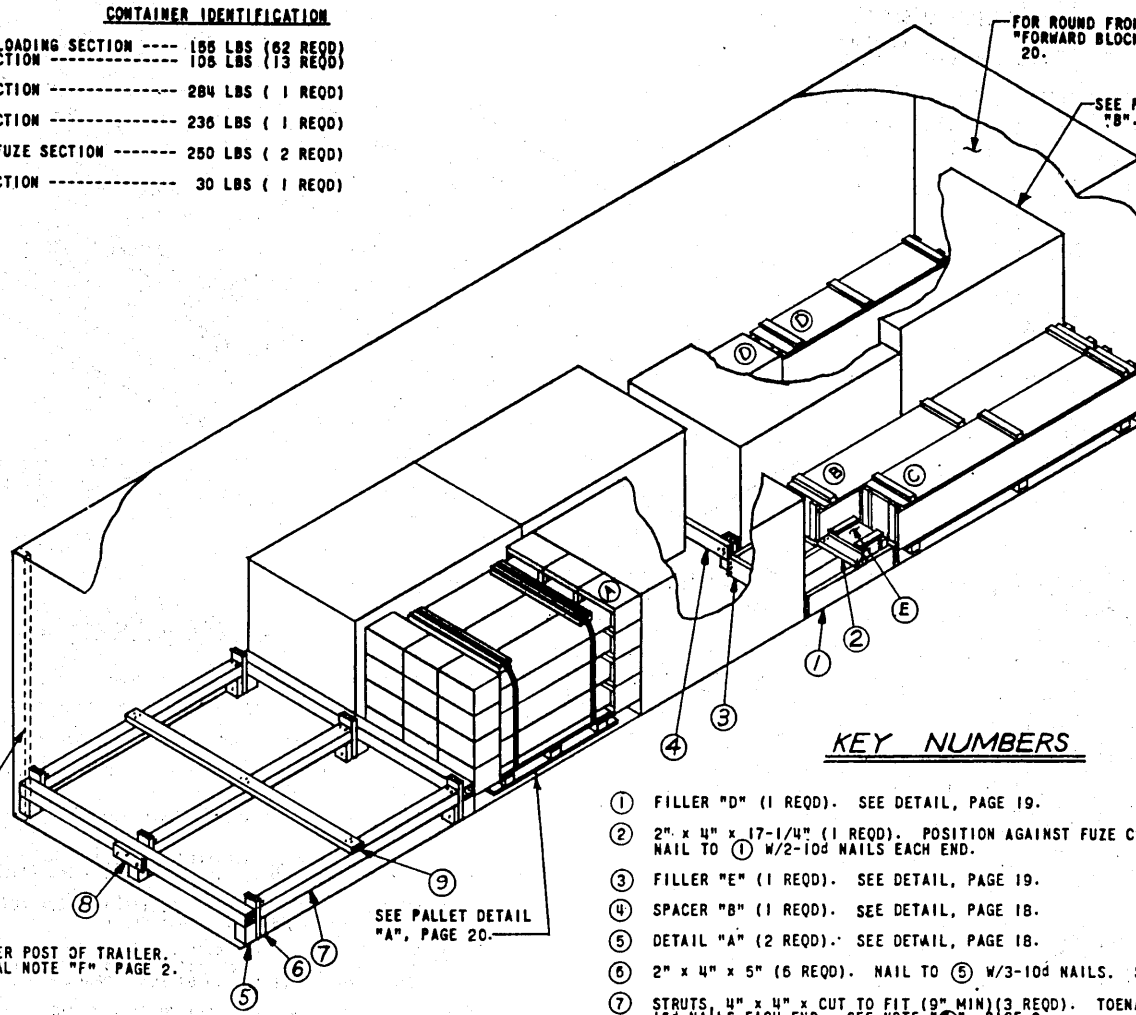
**LOAD AS SHOWN**

ITEM	QUANTITY	WEIGHT (APPROX)
DEMOLITION KIT -----	3 -----	36,114 LBS
DUNNAGE -----	-----	342 LBS
TOTAL WEIGHT - - - - -		36,456 LBS (APPROX)

**THREE DEMOLITION KITS**

**CONTAINER IDENTIFICATION**

- A CENTER LOADING SECTION ---- 155 LBS (62 REQD)  
BODY SECTION ---- 105 LBS (13 REQD)
- B TAIL SECTION ----- 284 LBS ( 1 REQD)
- C NOSE SECTION ----- 236 LBS ( 1 REQD)
- D IMPACT FUZE SECTION ----- 250 LBS ( 2 REQD)
- E FUZE SECTION ----- 30 LBS ( 1 REQD)



FOR ROUND FRONT TRAILERS, SEE "FORWARD BLOCKING A", PAGE 20.

SEE PALLET DETAIL "B", PAGE 20.

**KEY NUMBERS**

- ① FILLER "D" (1 REQD). SEE DETAIL, PAGE 19.
  - ② 2" x 4" x 17-1/4" (1 REQD). POSITION AGAINST FUZE CONTAINER AND NAIL TO ① W/2-10d NAILS EACH END.
  - ③ FILLER "E" (1 REQD). SEE DETAIL, PAGE 19.
  - ④ SPACER "B" (1 REQD). SEE DETAIL, PAGE 18.
  - ⑤ DETAIL "A" (2 REQD). SEE DETAIL, PAGE 18.
  - ⑥ 2" x 4" x 5" (6 REQD). NAIL TO ⑤ W/3-10d NAILS. SEE NOTE BELOW.
  - ⑦ STRUTS, 4" x 4" x CUT TO FIT (9" MIN)(3 REQD). TOENAIL TO ⑤ W/2-16d NAILS EACH END. SEE NOTE "8", PAGE 2.
  - ⑧ SOLID FILL, 4" WIDE MATERIAL x 12" LONG (AS REQD TO CONTACT CLOSED DOORS). NAIL TO ⑤ AND/OR SELF W/3-10d NAILS. NOT REQD FOR TRAILERS WITHOUT REAR CORNER POSTS.
  - ⑨ 2" x 4" x TRAILER WIDTH (CUT TO FIT). POSITION EVERY 7'-0". NAIL TO ⑦ W/3-12d NAILS EACH JOINT.
- NOTE: WHEN USING SOLID FILL MATERIAL AS DESCRIBED IN NOTE "8", PAGE 2, DELETE PIECES ⑥ THRU ⑧. REF: BLOCKING DEPICTED ON PAGE 8.

**ISOMETRIC VIEW**

30'-0" LONG x 7'-5" WIDE TRAILER WITH WOOD, WOOD AND METAL OR METAL FLOOR.

REAR CORNER POST OF TRAILER. SEE GENERAL NOTE "F" PAGE 2.

SEE PALLET DETAIL "A", PAGE 20.

**BILL OF MATERIAL**

LUMBER	LINEAL FEET	BOARD FEET
1" x 4"	2	1
2" x 4"	25	17
2" x 6"	15	15
4" x 4"	39	52
NAILS	NO. REQD	POUNDS
5d (2")	5	1/4
10d (3")	55	1
12d (3 1/4")	45	3/4
16d (3 1/2")	12	1/2

**LOAD AS SHOWN**

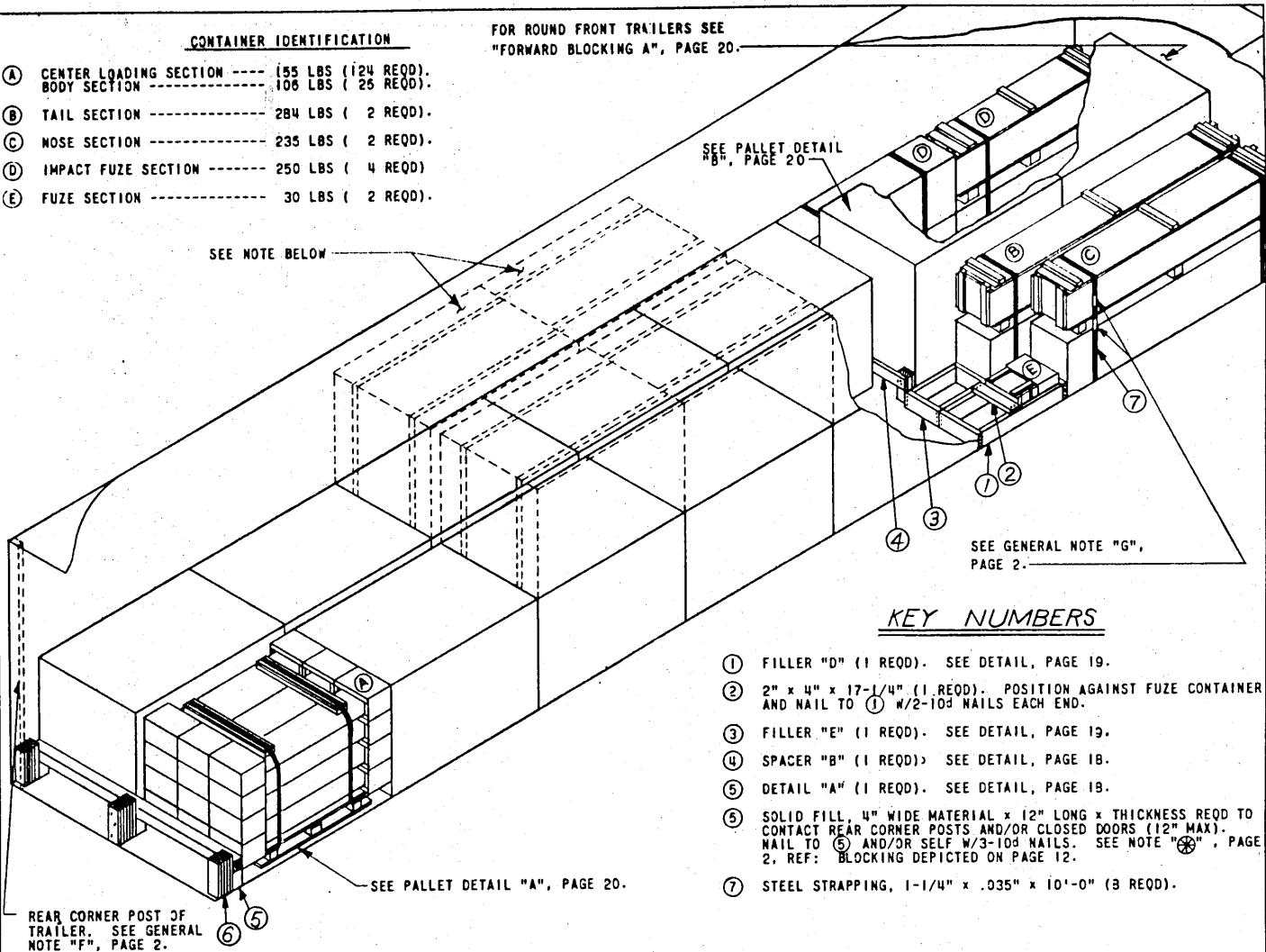
ITEM	QUANTITY	WEIGHT (APPROX)
DEMOLITION KIT	1	12,657 LBS
DUNNAGE		216 LBS
<b>TOTAL WEIGHT</b>		<b>12,873 LBS (APPROX)</b>

**ONE DEMOLITION KIT, CENTER LOADING AND BODY SECTIONS PALLETIZED**

**CONTAINER IDENTIFICATION**

- (A) CENTER LOADING SECTION ----- 155 LBS (124 REQD).  
BODY SECTION ----- 106 LBS ( 25 REQD).
- (B) TAIL SECTION ----- 284 LBS ( 2 REQD).
- (C) NOSE SECTION ----- 235 LBS ( 2 REQD).
- (D) IMPACT FUZE SECTION ----- 250 LBS ( 4 REQD)
- (E) FUZE SECTION ----- 30 LBS ( 2 REQD).

FOR ROUND FRONT TRAILERS SEE  
"FORWARD BLOCKING A", PAGE 20.



SEE NOTE BELOW

SEE PALLET DETAIL  
"B", PAGE 20

SEE GENERAL NOTE "G",  
PAGE 2.

SEE PALLET DETAIL "A", PAGE 20.

REAR CORNER POST OF  
TRAILER. SEE GENERAL  
NOTE "F", PAGE 2.

**KEY NUMBERS**

- ① FILLER "D" (1 REQD). SEE DETAIL, PAGE 19.
- ② 2" x 4" x 17-1/4" (1 REQD). POSITION AGAINST FUZE CONTAINER AND NAIL TO ① W/2-10d NAILS EACH END.
- ③ FILLER "E" (1 REQD). SEE DETAIL, PAGE 19.
- ④ SPACER "B" (1 REQD). SEE DETAIL, PAGE 18.
- ⑤ DETAIL "A" (1 REQD). SEE DETAIL, PAGE 19.
- ⑥ SOLID FILL, 4" WIDE MATERIAL x 12" LONG x THICKNESS REQD TO CONTACT REAR CORNER POSTS AND/OR CLOSED DOORS (12" MAX). NAIL TO ⑤ AND/OR SELF W/3-10d NAILS. SEE NOTE "G", PAGE 2, REF: BLOCKING DEPICTED ON PAGE 12.
- ⑦ STEEL STRAPPING, 1-1/4" x .035" x 10'-0" (3 REQD).

**ISOMETRIC VIEW**

40'-0" LONG x 7'-6" WIDE TRAILER WITH  
WOOD, WOOD AND METAL OR METAL FLOOR.

**NOTE:**

THIS LOAD MAY BE LOADED IN A 29'-0" VAN BY LOADING LAST  
FOUR PALLETS TWO HIGH ON PALLETS AHEAD, AND UNITIZING  
AS DEPICTED ON PAGE 8.

**BILL OF MATERIAL**

LUMBER	LINEAL FEET	BOARD FEET
1" x 4"	2	1
2" x 4"	23	16
2" x 6"	15	15
4" x 4"	9	12
NAILS	NO. REQD	POUNDS
6d (2")	5	1/4
10d (3")	73	1-1/4
12d (3-1/4")	18	1/2
STRAPPING, STEEL, 1-1/4" x .035" --- 80' REQD --- 12 LBS		

**LOAD AS SHOWN**

ITEM	QUANTITY	WEIGHT (APPROX)
DEMOLITION KIT	2	26,314 LBS
DUNNAGE		124 LBS
TOTAL WEIGHT		25,438 LBS (APPROX)

**TWO DEMOLITION KITS, CENTER LOADING AND BODY SECTIONS PALLETIZED**

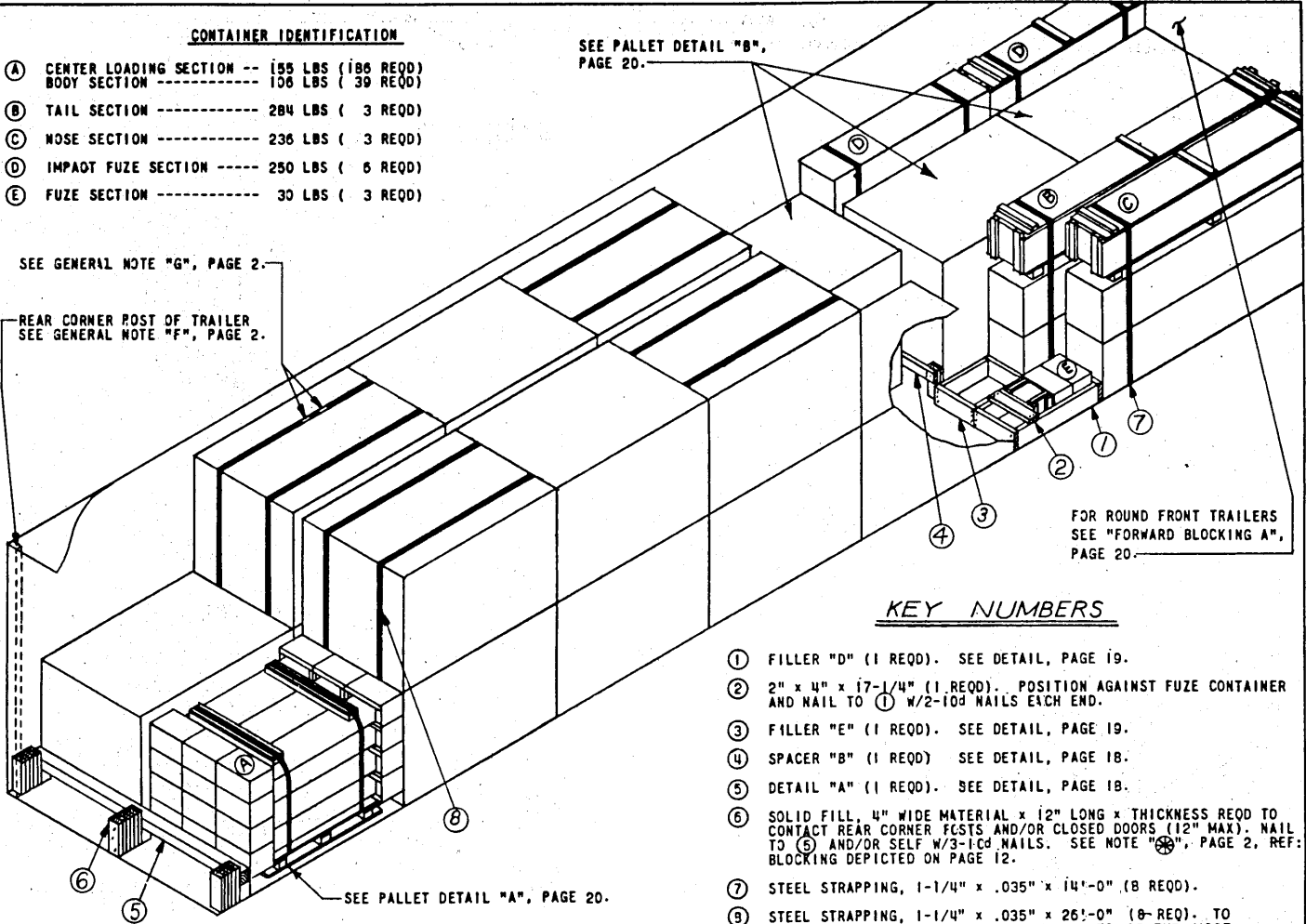
**CONTAINER IDENTIFICATION**

- (A) CENTER LOADING SECTION -- 155 LBS (186 REQD)  
BODY SECTION ----- 106 LBS ( 39 REQD)
- (B) TAIL SECTION ----- 284 LBS ( 3 REQD)
- (C) NOSE SECTION ----- 236 LBS ( 3 REQD)
- (D) IMPACT FUZE SECTION ----- 250 LBS ( 6 REQD)
- (E) FUZE SECTION ----- 30 LBS ( 3 REQD)

SEE PALLET DETAIL "B",  
PAGE 20.

SEE GENERAL NOTE "G", PAGE 2.

REAR CORNER POST OF TRAILER  
SEE GENERAL NOTE "F", PAGE 2.



SEE PALLET DETAIL "A", PAGE 20.

**KEY NUMBERS**

- ① FILLER "D" (1 REQD). SEE DETAIL, PAGE 19.
- ② 2" x 4" x 17-1/4" (1 REQD). POSITION AGAINST FUZE CONTAINER AND NAIL TO ① W/2-10d NAILS EACH END.
- ③ FILLER "E" (1 REQD). SEE DETAIL, PAGE 19.
- ④ SPACER "B" (1 REQD) SEE DETAIL, PAGE 18.
- ⑤ DETAIL "A" (1 REQD). SEE DETAIL, PAGE 18.
- ⑥ SOLID FILL, 4" WIDE MATERIAL x 12" LONG x THICKNESS REQD TO CONTACT REAR CORNER POSTS AND/OR CLOSED DOORS (12" MAX). NAIL TO ⑤ AND/OR SELF W/3-10d NAILS. SEE NOTE "G", PAGE 2, REF. BLOCKING DEPICTED ON PAGE 12.
- ⑦ STEEL STRAPPING, 1-1/4" x .035" x 14'-0" (8 REQD).
- ⑧ STEEL STRAPPING, 1-1/4" x .035" x 26'-0" (8-REQ). TO ENCIRCLE THE 1ST AND 2ND LAYER UNITS OF THE MOST REARWARD AND THE MOST FORWARD 2-HIGH STACKS WITHIN THE LOAD.

**ISOMETRIC VIEW**

40'-0" LONG x 7'-5" WIDE TRAILER  
WITH WOOD, WOOD AND METAL OR METAL  
FLOOR.

**BILL OF MATERIAL**

LUMBER	LINEAL FEET	BOARD FEET
1" x 4"	2	1
2" x 4"	23	16
2" x 5"	15	15
4" x 4"	9	12
NAILS	NO. REQD	POUNDS
6d (2")	5	1/4
10d (3")	73	1-1/4
12d (3-1/4")	18	1/2
STRAPPING, STEEL, 1-1/4" x .035" -- 320' REQD - 46 LBS		

**LOAD AS SHOWN**

ITEM	QUANTITY	WEIGHT (APPROX)
DEMOLITION KIT -----	3 -----	37,971 LBS
DUNNAGE -----		158 LBS
TOTAL WEIGHT ----		38,129 LBS (APPROX)

**THREE DEMOLITION KITS, CENTER LOADING AND BODY SECTIONS PALLETIZED**

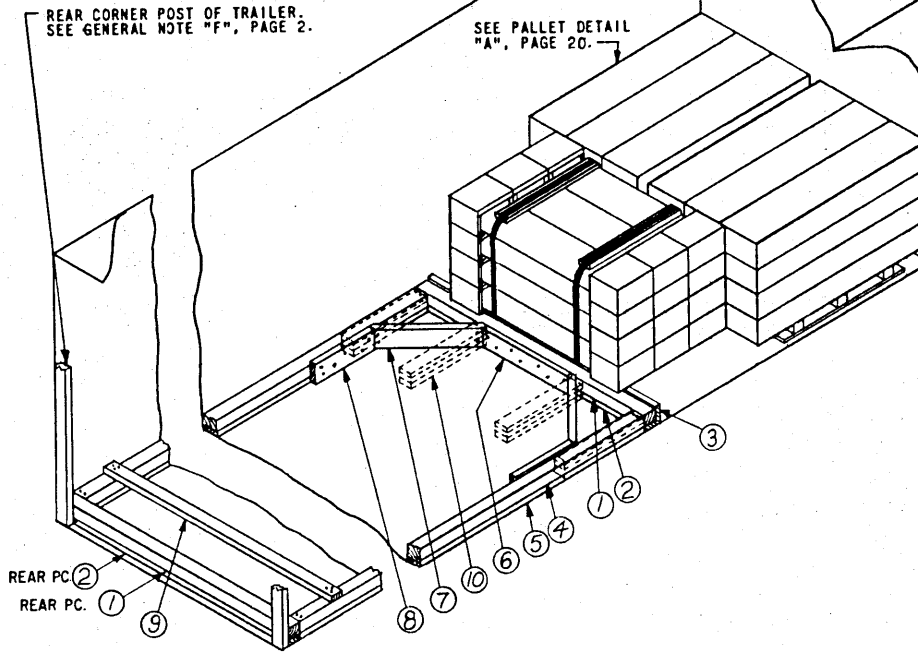
FOR ROUND FRONT TRAILERS SEE FORWARD BLOCKING "A", PAGE 20.

KEY NUMBERS

- ① 4" x 4" x TRAILER WIDTH (CUT TO FIT)(2 REOD). POSITION AS SHOWN.
- ② 2" x 4" x TRAILER WIDTH (CUT TO FIT)(2 REOD). NAIL TO ① W/1-12d NAIL EVERY 8".
- ③ 2" x 6" x CUT TO FIT (2 REOD). NAIL TO ① AND/OR ② W/3-12d NAILS.
- ④ 4" x 4" x CUT TO FIT (2 REOD). TOENAIL TO ① W/2-15d NAILS EACH END.
- ⑤ 2" x 4" x CUT TO FIT (2 REOD). NAIL TO ④ W/1-12d NAIL EVERY 12".
- ⑥ 2" x 6" x 33" (1 REOD). CENTER AND NAIL TO ① AND/OR ② W/7-12d NAILS.
- ⑦ 2" x 6" x CUT TO FIT (2 REOD). DOUBLE BEVEL EACH END 45°. TOENAIL TO ① AND/OR ② AND ④ W/2-15d NAILS EACH END.
- ⑧ 2" x 6" x 24" (2 REOD). NAIL TO ④ AND/OR ⑤ W/5-12d NAILS.
- ⑨ 2" x 4" x TRAILER WIDTH (CUT TO FIT) (MIN 1 REOD). POSITION EVERY 7'-0". NAIL TO ④ W/3-12d NAILS EACH END.
- ⑩ 2" x 6" x 30" (TRIPLED)(4 REOD). ALIGN WITH PALLET SKIDS AND NAIL FIRST PIECE TO TRAILER FLOOR W/7-12d NAILS. NAIL EACH ADDITIONAL PIECE IN LIKE MANNER. TOENAIL TO ① W/2-15d NAILS. SEE NOTE "C".

REAR CORNER POST OF TRAILER. SEE GENERAL NOTE "F", PAGE 2.

SEE PALLET DETAIL "A", PAGE 20.



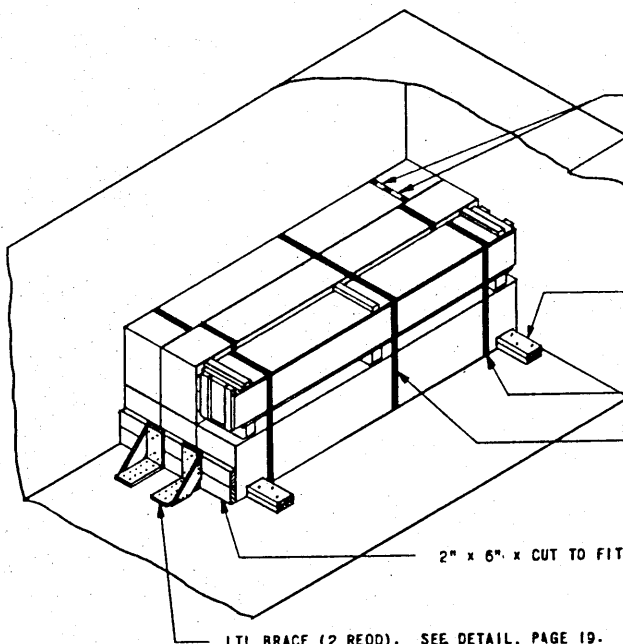
TYPICAL LTL

FOR TRAILERS WITH WOOD, WOOD AND METAL OR ALL METAL FLOOR.

NOTE "C":

WHEN LOADING TRAILERS W/ WOOD OR WOOD AND METAL FLOORS, PIECE ⑩ MAY BE USED IN LIEU OF REAR PIECES ① AND ② AND PIECES ④ THRU ⑨ WHICH APPLY TO TRAILERS WITH ALL METAL FLOORS. FOUR BACK UP CLEATS, SHOWN AS PIECE ⑩ ARE ADEQUATE FOR RETAINING A MAXIMUM LTL LOAD OF 10,000 POUNDS. "K-BRACE" SHOWN AS REAR PIECES ① AND ②, AND PIECES ④ THRU ⑨, IS ADEQUATE FOR RETAINING A MAXIMUM LTL LOAD OF 24,000 POUNDS.

SEE GENERAL NOTE "G", PAGE 2.



2" x 5" x 12" (DOUBLED)(2 REOD). POSITION AGAINST SKIDS OF CONTAINER AND NAIL FIRST PIECE TO TRAILER FLOOR W/3-12d NAILS. NAIL SECOND PIECE TO FIRST IN LIKE MANNER.

STEEL STRAPPING, 1-1/4" x .035" x 10'-5" (6 REOD).

STEEL STRAPPING, 1-1/4" x .035" x 16'-0" (1 REOD).

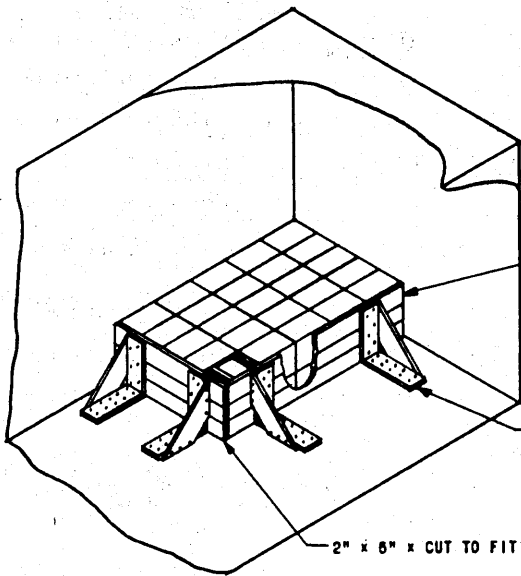
2" x 6" x CUT TO FIT (2 REOD).

LTL BRACE (2 REOD). SEE DETAIL, PAGE 19. NAIL TO 2" x 6" MATERIAL W/4-5d NAILS. NAIL TO TRAILER FLOOR W/10-5d NAILS.

TYPICAL LTL

FOR WOOD OR WOOD AND METAL FLOOR TRAILER ONLY.

TYPICAL LTL METHODS



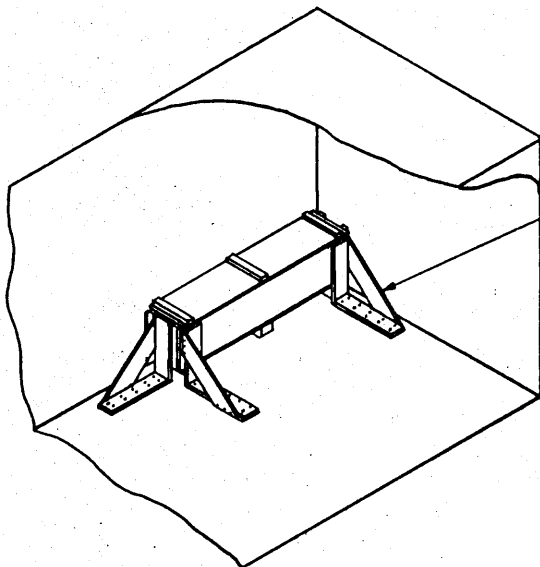
2" x 6" x CUT TO FIT (3 REQD).

LTL BRACE (4 REQD). SEE DETAIL, PAGE 19.  
 NAIL TO 2" x 6" MATERIAL W/6-6d NAILS. NAIL  
 TO TRAILER FLOOR W/10-6d NAILS.

2" x 6" x CUT TO FIT (3 REQD).

TYPICAL LTL

FOR WOOD OR WOOD AND METAL FLOOR  
 TRAILER ONLY.



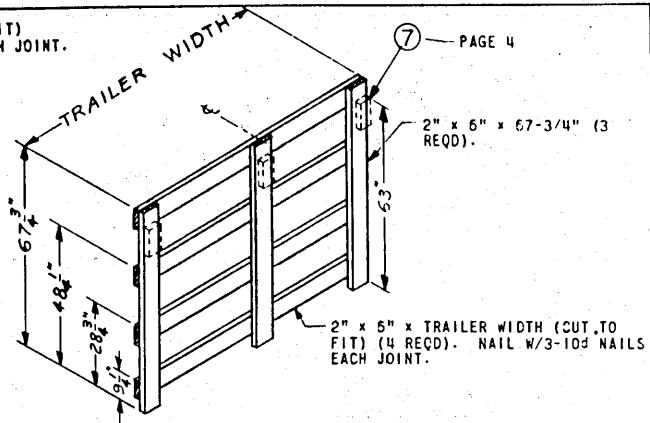
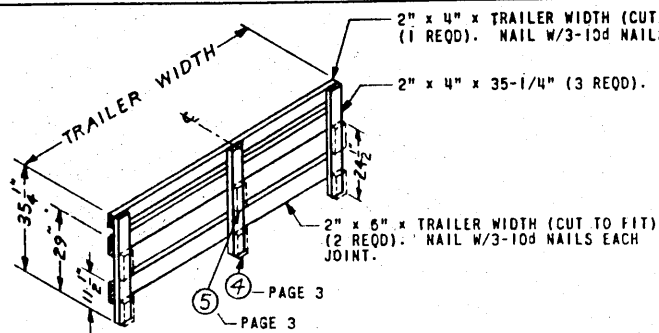
LTL BRACE (3 REQD). SEE DETAIL, PAGE 19.  
 NAIL TO TRAILER FLOOR W/10-6d NAILS.

TYPICAL LTL

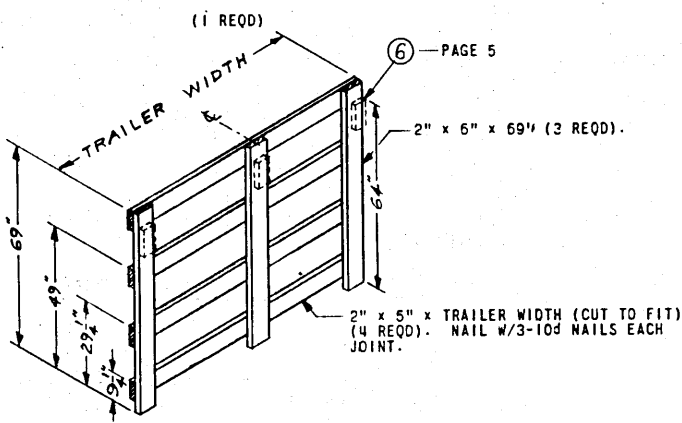
FOR WOOD OR WOOD AND METAL FLOOR  
 TRAILER ONLY.

TYPICAL LTL METHODS

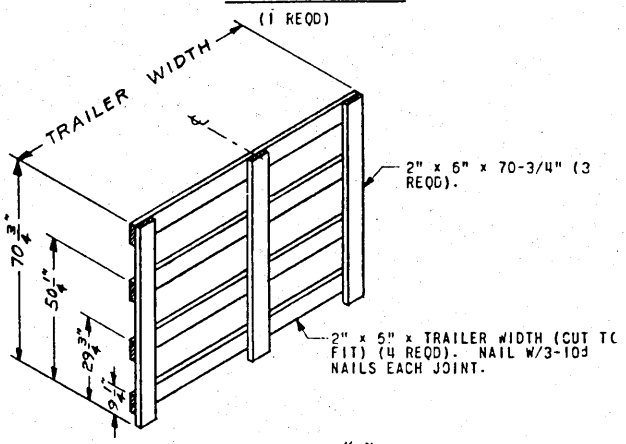




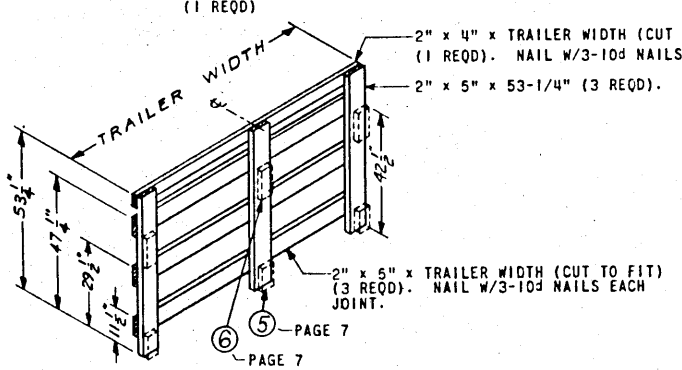
GATE "A"



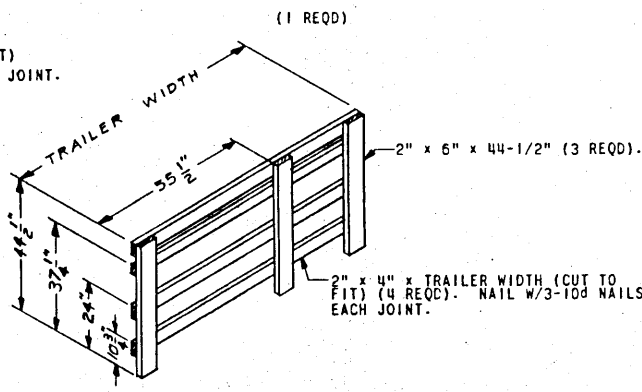
GATE "B"



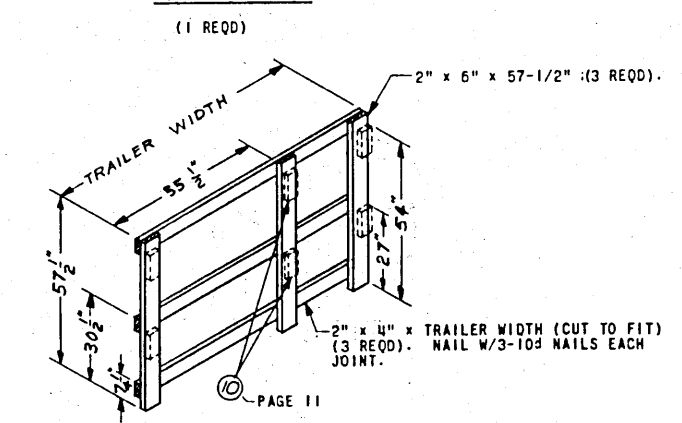
GATE "C"



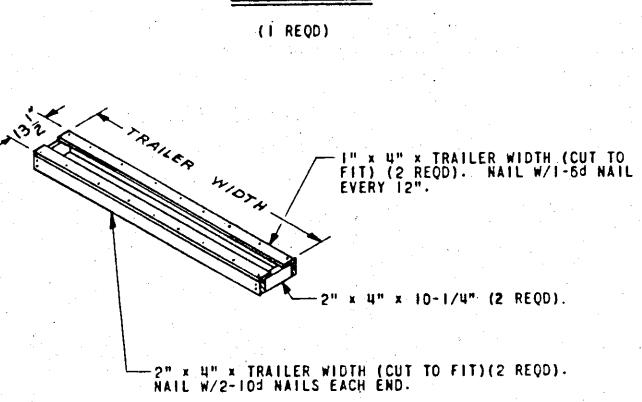
GATE "D"



GATE "E"



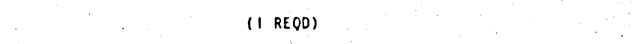
GATE "F"



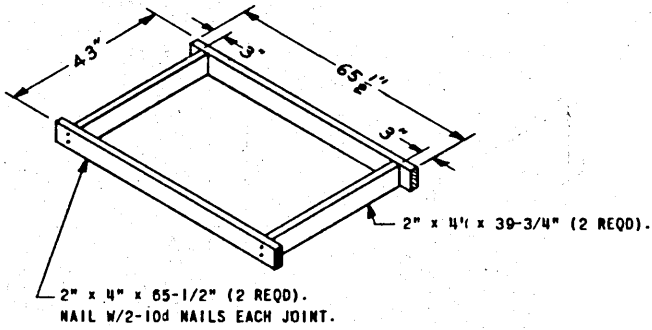
GATE "G"



RISER "A"

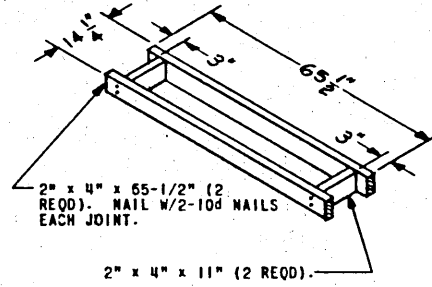


DETAILS



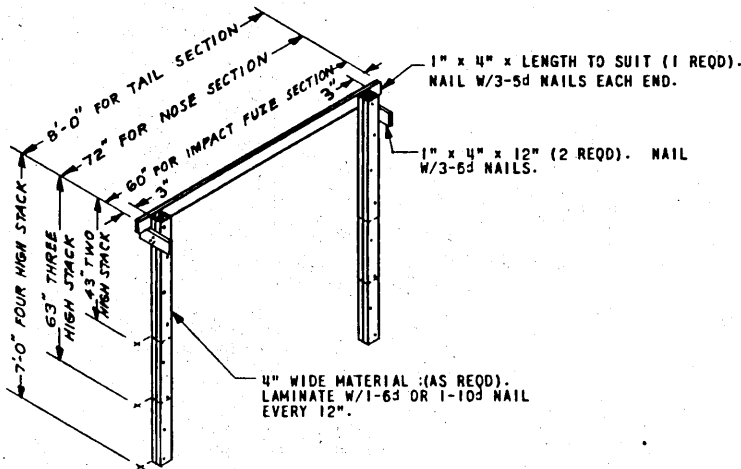
RISER "B"

(1 REQD)



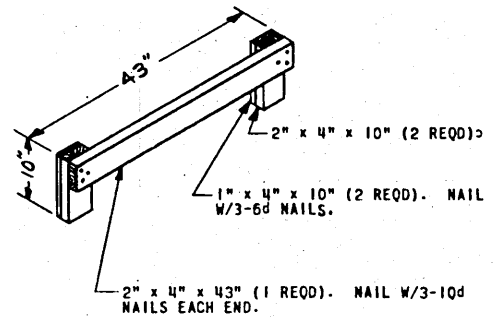
RISER "C"

(AS REQD)



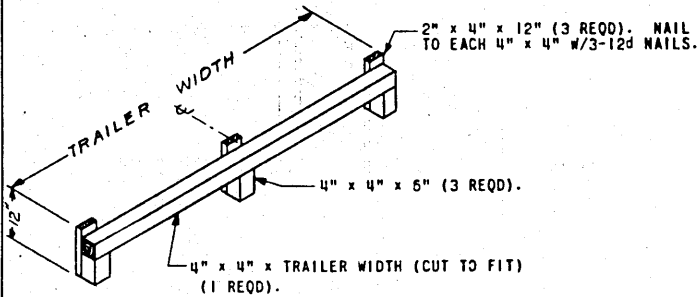
SPACER "A"

(AS REQD)



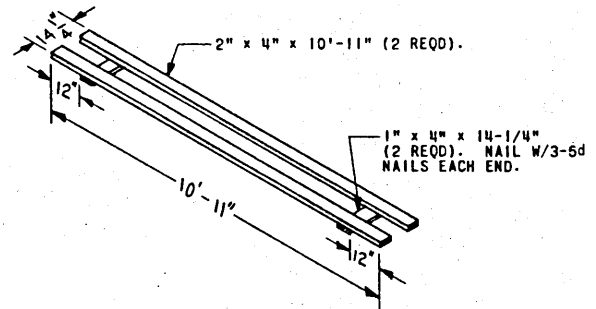
SPACER "B"

(AS REQD)



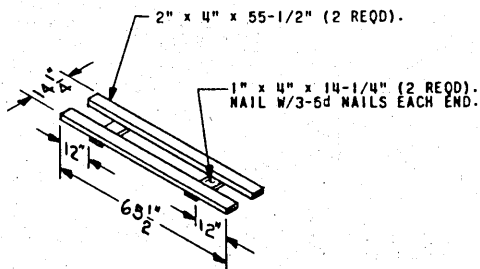
DETAIL "A"

(AS REQD)



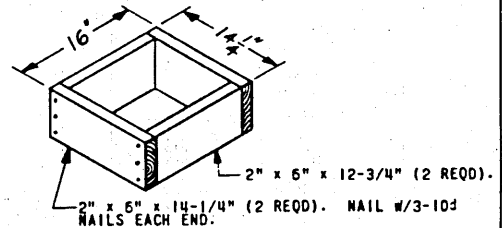
DECKING "A"

(2 REQD)



DECKING "B"

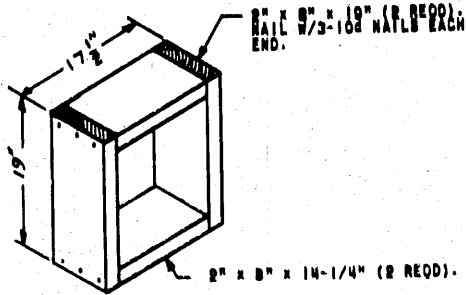
(1 REQD)



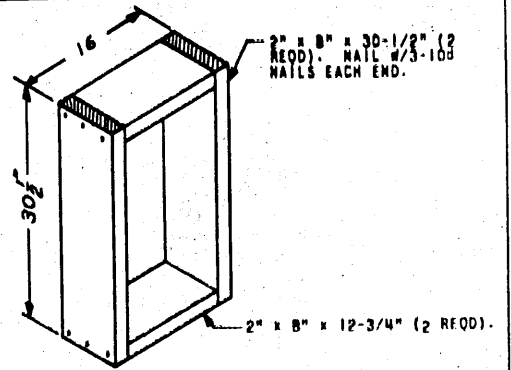
FILLER "A"

(1 REQD)

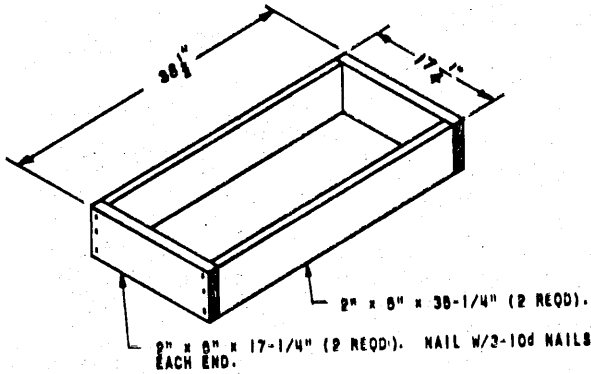
DETAILS



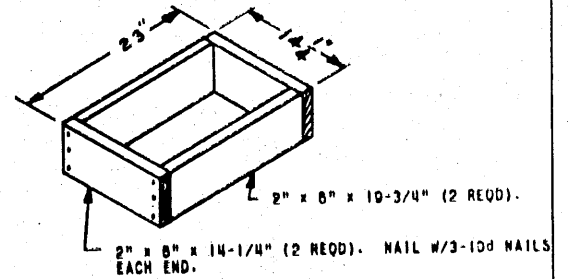
**FILLER "B"**  
 (1 REQD)



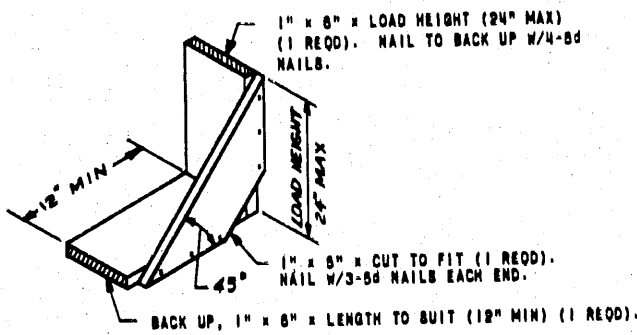
**FILLER "C"**  
 (1 REQD)



**FILLER "D"**  
 (AS REQD)



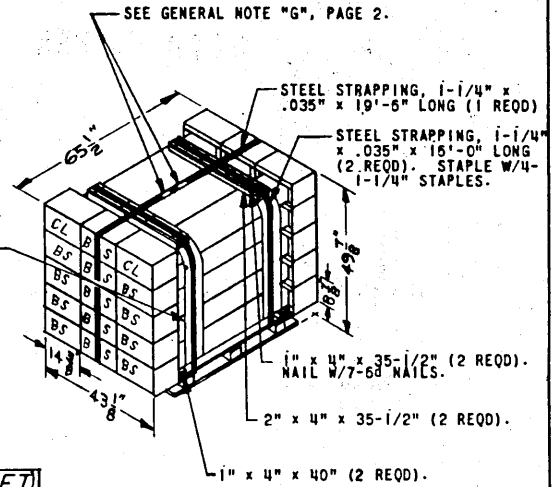
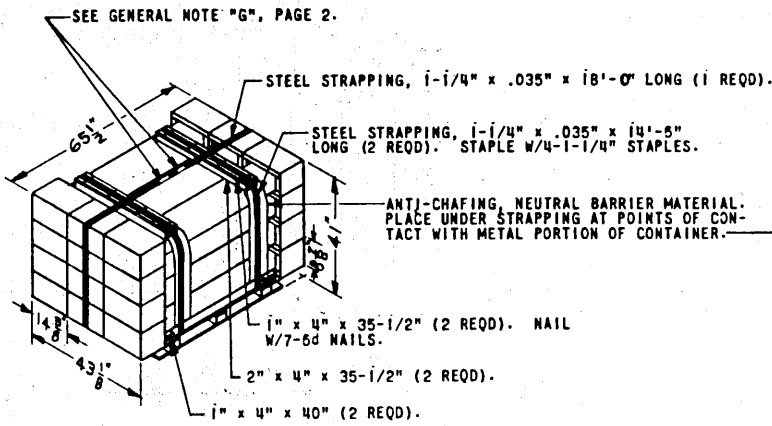
**FILLER "E"**  
 (AS REQD)



**LTL BRACE**  
 (AS REQD)

EACH BRACE AS APPLIED FOR LONGITUDINAL OR LATERAL BRACING WILL SUPPORT 2,000 LBS. A BRACE MUST BE USED FOR EACH 24" OF LOAD DIMENSION. ADDITIONALLY A MINIMUM OF TWO (2) BRACES MUST BE USED IN THEIR RESPECTIVE DIRECTION IF THE LOAD IS MORE THAN TWO (2) BOXES WIDE OR LONG.

**DETAILS**



**PALLET DETAIL "A"**

FIVE (5) REQD/KIT  
12 CENTER LOADING SECTIONS/PALLET  
TOTAL WEIGHT - 1,953 POUNDS (APPROX)

**BILL OF MATERIAL (PER PALLET)**

LUMBER	LINEAL FEET	BOARD FEET
1" x 4"	12-2/3	4-1/4
2" x 4"	6	4
NAILS	NO. REQD	POUNDS
6d (2")	14	-

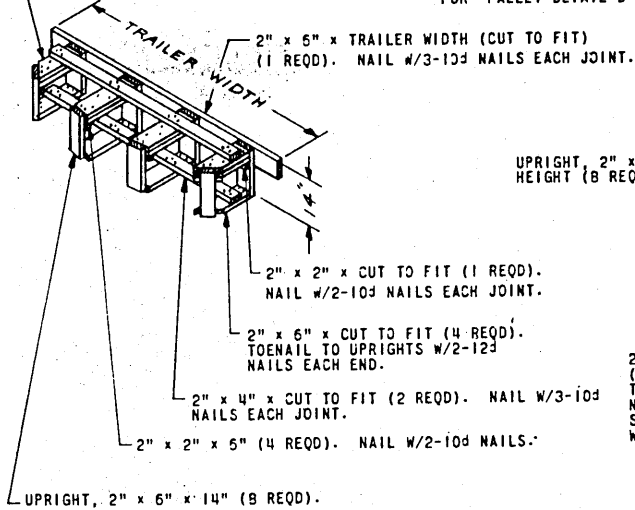
STRAPPING, STEEL, 1-1/4" x .035"- 49' REQD-7 LBS  
STAPLES FOR 1-1/4" STRAPPING----- 8 REQD  
ANTI-CHAFING MATERIAL-----AS REQD

**PALLET DETAIL "B"**

ONE (1) REQD/KIT  
13 BODY SECTIONS PLUS 2 CENTER LOADING SECTIONS/PALLET  
TOTAL WEIGHT - 1,792 POUNDS (APPROX)

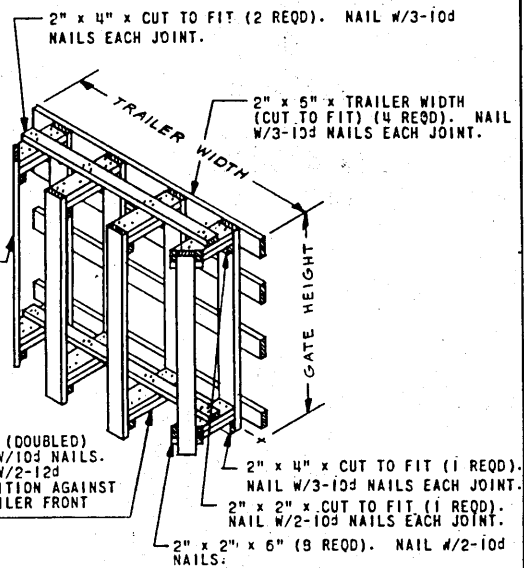
2" x 5" x CUT TO FIT (DOUBLED) (4 REQD). LAMINATE W/10d NAILS. TOENAIL TO UPRIGHTS W/2-12d NAILS EACH END. POSITION AGAINST STRONG POINTS IN TRAILER FRONT WALL.

NOTE: 54' OF 1-1/4" STEEL STRAPPING REQUIRED FOR "PALLET DETAIL B".



**FORWARD BLOCKING "A"**

FOR ROUND FRONT TRAILERS



**FORWARD BLOCKING "B"**

FOR ROUND FRONT TRAILERS

**DETAILS**