

APPENDIX 7

UNITIZING PROCEDURES FOR PROPELLING CHARGES PACKED IN CYLINDRICAL METAL CONTAINERS ON 4-WAY ENTRY PALLETS

M460 SERIES CONTAINERS (W/O PROTECTIVE ASSEMBLY)

INDEX

<u>ITEM</u>	<u>PAGE (S)</u>
GENERAL NOTES -----	2
UNIT A (ALTERNATED CONTAINERS) -----	4,5
UNIT B (FLAT DUNNAGE) -----	6,7
UNIT C (ROUTED DUNNAGE) -----	8,9
FILLERS AND INSTALLATION PROCEDURES FOR OMITTED CONTAINERS:	
UNIT A (ALTERNATED CONTAINERS) -----	10,11
UNIT B (FLAT DUNNAGE) -----	12,13
UNIT C (ROUTED DUNNAGE) -----	14,15

PALLET UNIT DATA						
ITEMS INCLUDED		HAZARD CLASSIFICATION ①				WEIGHT (LBS)
NSN	DODIC	DOT CLASS	CG CLASS	QD CLASS	COMP GROUP	
1320-00-775-1533 00-113-8006	D536	B	II-A	1.3	C	1,875 TO
	D676	B	II-A	1.3	C	1,905

NOTICE: THIS APPENDIX CANNOT STAND ALONE BUT MUST BE USED IN CONJUNCTION WITH THE BASIC UNITIZATION PROCEDURES DRAWING 19-48-4042-20PM1001.

THIS DRAWING SUPERSEDES PART OF DRAWING 19-48-4042-1-2-5-11-14PM1000, DATED FEBRUARY 1965, AND REVISION I, THERETO, DATED 29 AUGUST 1969.

① HAZARD CLASSIFICATION INFORMATION CONTAINED IN THE ABOVE CHART IS FOR GUIDANCE AND INFORMATIONAL PURPOSES ONLY. VERIFICATION OF THE SPECIFIED DATA SHOULD BE MADE BY CONSULTING THE MOST RECENT JOINT HAZARD CLASSIFICATION SYSTEM LISTING OR OTHER APPROVED LISTING (S).

DO NOT SCALE

REVISIONS				DATE	BY	APPROVED BY	DATE
1	JULY 86	<i>W. J. Williams</i>	<i>E. J. Ernst</i>			<i>William J. Williams</i>	
						<i>Donnell J. Feltz</i>	
						<i>John H. Boydell</i>	

APPROVED, U. S. ARMY ARMAMENT MATERIEL READINESS COMMAND			
BRAS - BRAS		BRAS - TND	
APPROVED BY ORDER OF COMMANDING GENERAL, U. S. ARMY MATERIEL DEVELOPMENT AND READINESS COMMAND (ARMCOM)			
U. S. ARMY DEFENSE ACQUISITION CENTER AND SCHOOL			
U. S. ARMY DARCOM DRAWING			
OCTOBER 1979			
CLASS	DIVISION	DRAWING	FILE
19	48	4042A/ 7	20PM 1001

GENERAL NOTES

REVISION

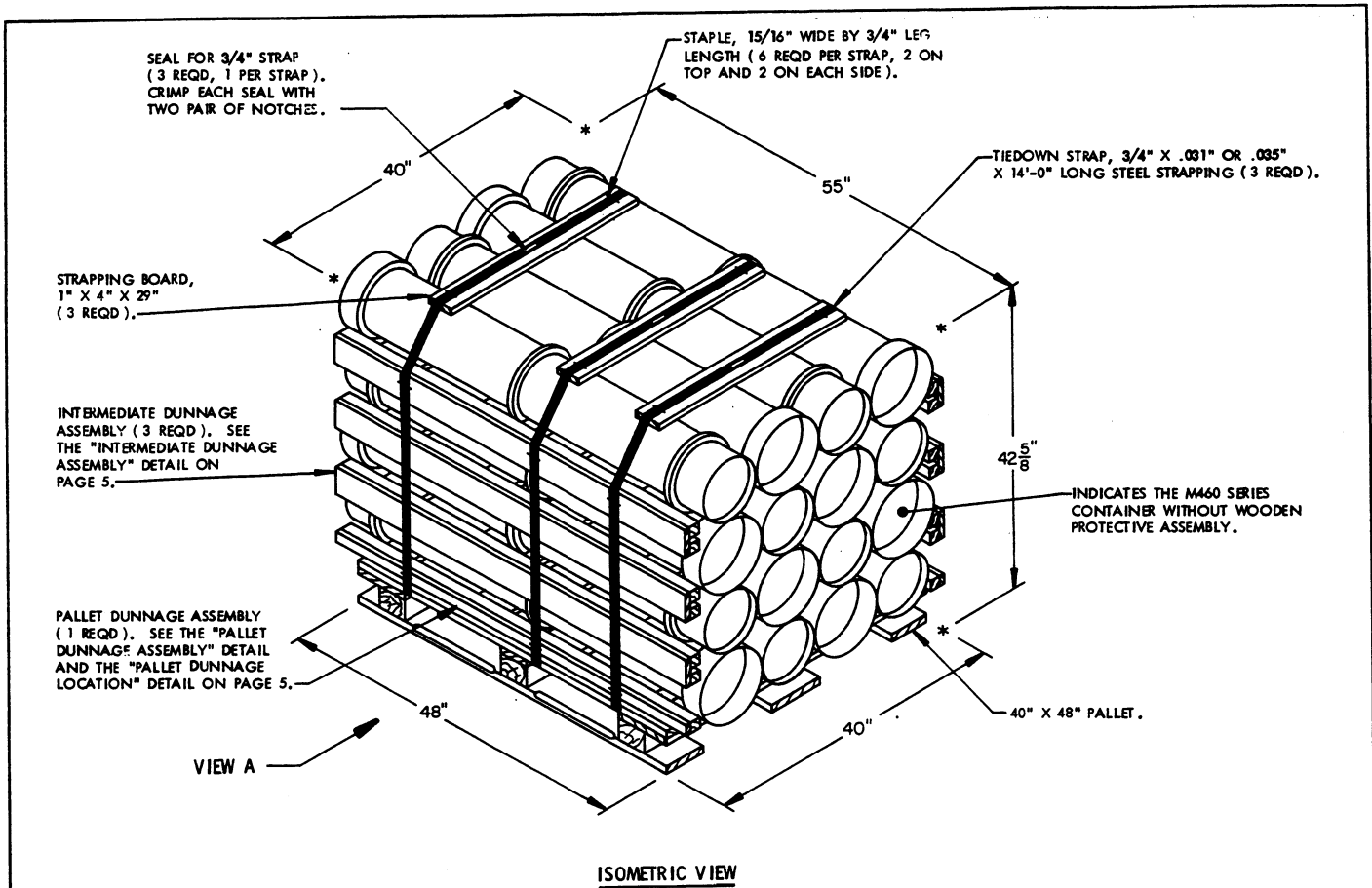
- A. THIS APPENDIX CANNOT STAND ALONE BUT MUST BE USED IN CONJUNCTION WITH THE BASIC UNITIZING PROCEDURES DRAWING 19-48-4042-20PM1001. TO PRODUCE AN APPROVED UNIT LOAD, ALL PERTINENT PROCEDURES, SPECIFICATIONS AND CRITERIA SET FORTH WITHIN THE BASIC DRAWING WILL APPLY TO THE PROCEDURES DELINEATED IN THIS APPENDIX. ANY EXCEPTIONS TO THE BASIC PROCEDURES ARE SPECIFIED IN THIS APPENDIX.
- B. DIMENSIONS, CUBE AND WEIGHT OF A PALLET UNIT WILL VARY SLIGHTLY DEPENDING UPON THE ACTUAL DIMENSIONS OF THE CONTAINER, WEIGHT OF THE SPECIFIED ITEM AND METHOD OF UNITIZATION.
- C. OUTLOADING AND STORAGE OF THE ITEMS COVERED BY THIS APPENDIX SHALL BE ACCOMPLISHED IN ACCORDANCE WITH AMC (DARCOM) DRAWINGS IDENTIFIED WITHIN DA PAMPHLET 75-5.
- D. FOR METHOD OF SECURING A STRAP CUTTER TO THE PALLET UNIT, SEE DARCOM DRAWING 19-48-4127-20P1000.
- E. IF ITEMS COVERED HEREIN ARE UNITIZED PRIOR TO ISSUANCE OF THIS APPENDIX, THE CONTAINERS NEED NOT BE REUNITIZED SOLELY TO CONFORM TO THIS APPENDIX.
- F. THE UNITIZATION PROCEDURES DEPICTED HEREIN MAY ALSO BE USED FOR UNITIZING PROPELLING CHARGES WHEN IDENTIFIED BY DIFFERENT NATIONAL STOCK NUMBERS (NSN) THAN THOSE SHOWN ON THE COVER PAGE, PROVIDED THE ITEM IS PACKED IN THE M460 SERIES CONTAINER WITHOUT WOODEN PROTECTIVE ASSEMBLY. THE EXPLOSIVE CLASSIFICATION OF OTHER ITEMS MAY BE DIFFERENT THAN THOSE SHOWN.
- G. FOR DETAILS OF THE M460 SERIES CONTAINER WITHOUT WOODEN PROTECTIVE ASSEMBLY, SEE PICATINNY ARSENAL DRAWING NO. 8880532.

CONTAINER DIMENSIONS ----- 55" LONG BY 9-13/16" DIAMETER.
CONTAINER CUBE ----- 2.4 CUBIC FEET
CONTAINER WEIGHT
(WITH CHARGE) ----- 106 POUNDS (APPROX)

- H. THE SPECIFIED UNITIZING PROCEDURES SHOWN HEREIN DEPICT THREE DIFFERENT METHODS FOR UNITIZING THE M460 SERIES CONTAINER WITHOUT WOODEN PROTECTIVE ASSEMBLY:
 - 1. UNIT "A" DEPICTS CONTAINERS UNITIZED ON FLAT DUNNAGE WITH EVERY OTHER CONTAINER ALTERNATED (BASE END, BELL END, BASE END) INDIVIDUALLY AND BY LAYERS. SEE DETAILS ON PAGES 4 AND 5.
 - 2. UNIT "B" DEPICTS CONTAINERS UNITIZED ON FLAT DUNNAGE. SEE DETAILS ON PAGES 6 AND 7.
 - 3. UNIT "C" DEPICTS CONTAINERS UNITIZED ON ROUTED DUNNAGE. SEE DETAILS ON PAGES 8 AND 9.
- ALTHOUGH UNIT "A" DEPICTS THE PREFERRED METHOD OF UNITIZING THE M460 SERIES CONTAINER WITHOUT WOODEN PROTECTIVE ASSEMBLY, ALL THREE METHODS ARE APPROVED FOR USE.
- J. IF DEEMED MORE ECONOMICAL FOR SHIPPING AND STORAGE BY THE RESPONSIBLE COMMAND, THE UNITS DEPICTED IN THE FOLLOWING PAGES MAY HAVE ONE COMPLETE LAYER OF CONTAINERS EITHER ADDED OR DELETED, WHICHEVER IS APPLICABLE. FOR FURTHER UNITIZATION GUIDANCE, SEE SPECIAL NOTE 1 ON PAGES 4 AND 6 AND SPECIAL NOTE 2 ON PAGE 8.
 - K. THE PROCEDURES SPECIFIED HEREIN WILL NOT BE APPLIED WHEN THE M86 PROPELLING CHARGE PACKED IN THE M460 SERIES CONTAINER IS TO BE UNITIZED. FOR UNITIZATION PROCEDURES OF THE M86 PROPELLING CHARGE PACKED IN THE M460 SERIES CONTAINER, SEE DARCOM DRAWING 19-48-4042/B-20PM1001.

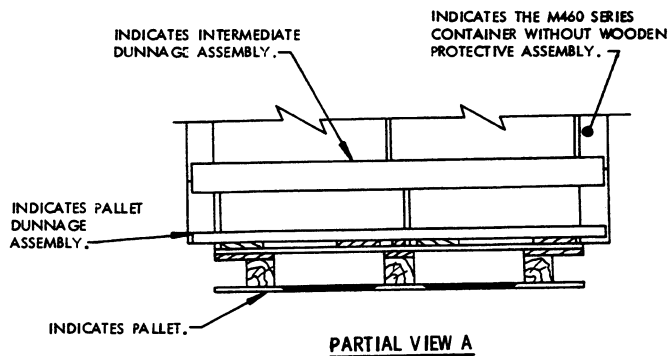
REVISION NO. 1, DATED JULY 1986, CONSISTS OF:
CHANGING 1-1/4" STRAPPING TO 3/4" STRAPPING.

THIS PAGE HAS BEEN INTENTIONALLY LEFT BLANK.

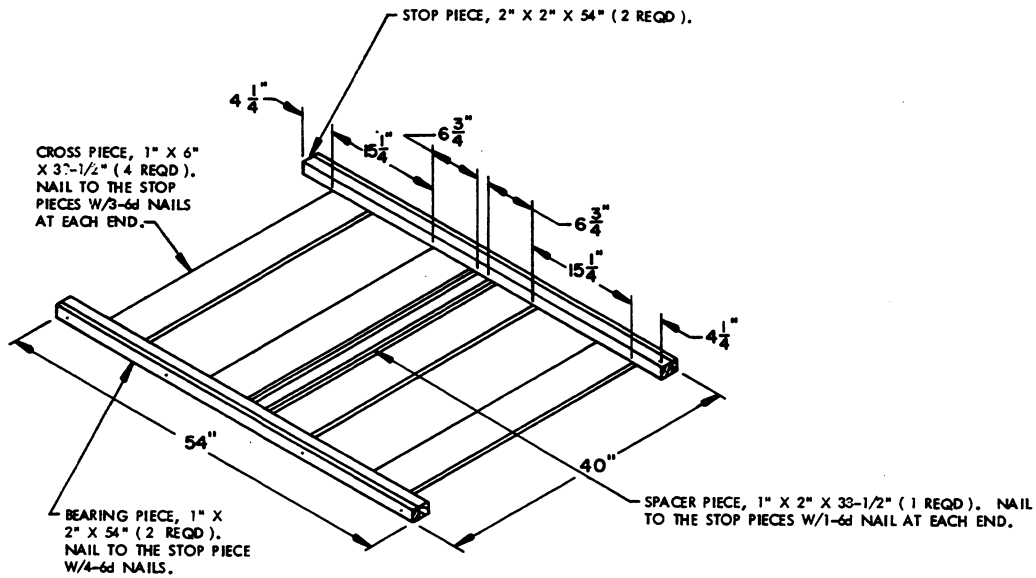


SPECIAL NOTE:

1. THE UNIT DEPICTED ABOVE MAY BE INCREASED BY ONE COMPLETE LAYER OF CONTAINERS BY THE ADDITION OF ONE DUNNAGE ASSEMBLY AND FOUR CONTAINERS, AND BY INCREASING THE STRAP LENGTHS APPROPRIATELY. THIS WILL RESULT IN AN OVERALL UNIT HEIGHT OF 51-5/8".

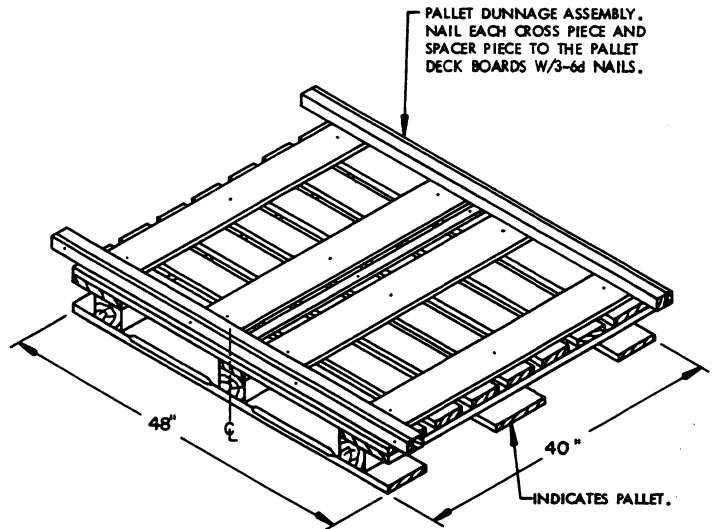


UNIT A (ALTERNATED CONTAINERS)

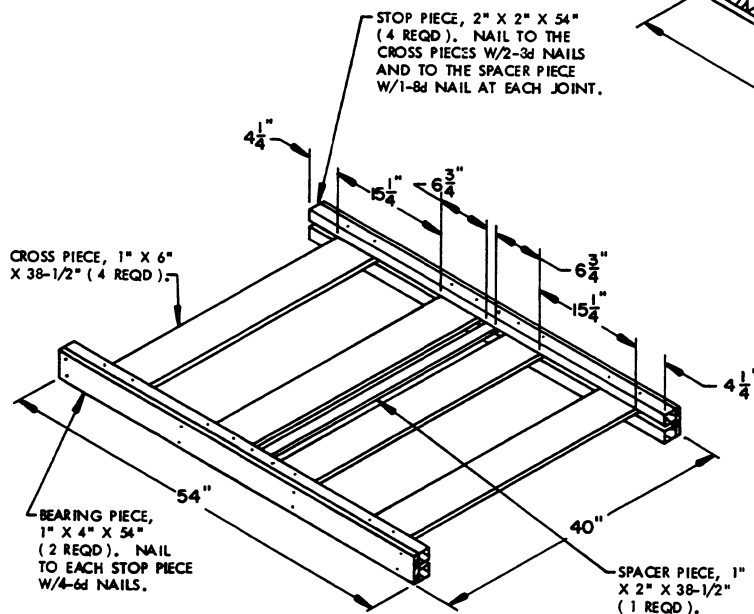


PALLET DUNNAGE ASSEMBLY

(1 REQD)



PALLET DUNNAGE LOCATION



INTERMEDIATE DUNNAGE ASSEMBLY

(3 REQD)

BILL OF MATERIAL			
LUMBER	NO. REQD	LINEAR FEET	BOARD FEET
1" X 2" X 38-1/2"	4	12.83	2.14
1" X 2" X 54"	2	9.00	1.50
1" X 4" X 29"	3	7.25	2.42
1" X 4" X 54"	6	27.00	9.00
1" X 6" X 38-1/2"	16	51.33	25.67
2" X 2" X 54"	14	63.00	21.00
NAILS		NO. REQD	POUNDS
6d (2")		97	0.57
8d (2-1/2")		108	1.14
PALLET, 40" X 48"		1 REQD	80 LBS
STEEL STRAPPING, 3/4" X .031" OR .035"		42.00' REQD	3 LBS
SEAL FOR 3/4" STRAPPING		3 REQD	NIL
STRAP STAPLE, 15/16" X 3/4"		18 REQD	NIL

UNIT DATA

WEIGHT

CUBE ----- 54.3 CUBIC FEET (APPROX)
 CONTAINER, MM60 SERIES -- 16 EA @ 106 LBS ----- 1,696 LBS (APPROX)
 DUNNAGE ----- 129 LBS
 PALLET ----- 80 LBS

TOTAL WEIGHT ----- 1,905 LBS (APPROX)

SEAL FOR 3/4" STRAP (3 REQD, 1 PER STRAP). CRIMP EACH SEAL WITH TWO PAIR OF NOTCHES.

STRAPPING BOARD, 2" X 4" X 34" (3 REQD).

STAPLE, 15/16" WIDE X 3/4" LEG LENGTH (7 REQD PER STRAP, 3 ON TOP AND 2 ON EACH SIDE).

INTERMEDIATE DUNNAGE ASSEMBLY (3 REQD). SEE THE "INTERMEDIATE DUNNAGE ASSEMBLY" DETAIL ON PAGE 7.

PALLET DUNNAGE ASSEMBLY (1 REQD). SEE THE "PALLET DUNNAGE ASSEMBLY" DETAIL AND THE "PALLET DUNNAGE LOCATION" DETAIL ON PAGE 7.

TIEDOWN STRAP, 3/4" X .031" OR .035" X 14'-8" LONG STEEL STRAPPING (3 REQD).

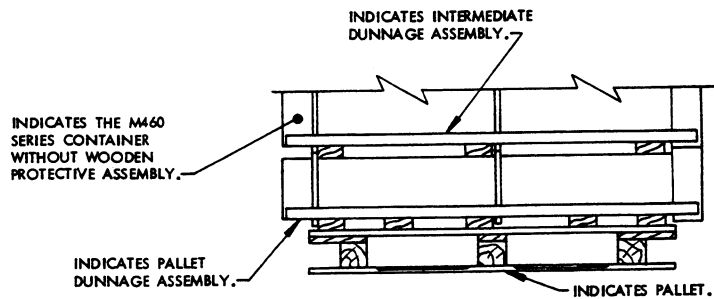
INDICATES THE M460 SERIES CONTAINER WITHOUT WOODEN PROTECTIVE ASSEMBLY.

VIEW B

ISOMETRIC VIEW

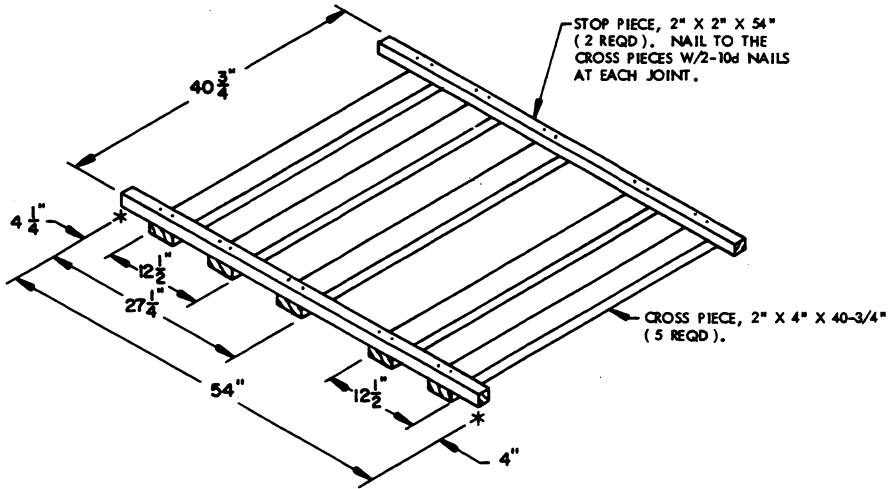
SPECIAL NOTE:

1. THE UNIT DEPICTED ABOVE MAY BE REDUCED BY ONE COMPLETE LAYER OF CONTAINERS BY THE DELETION OF ONE DUNNAGE ASSEMBLY AND FOUR CONTAINERS, AND BY DECREASING THE STRAP LENGTHS APPROPRIATELY. THIS WILL RESULT IN AN OVERALL UNIT HEIGHT OF 35-1/2".

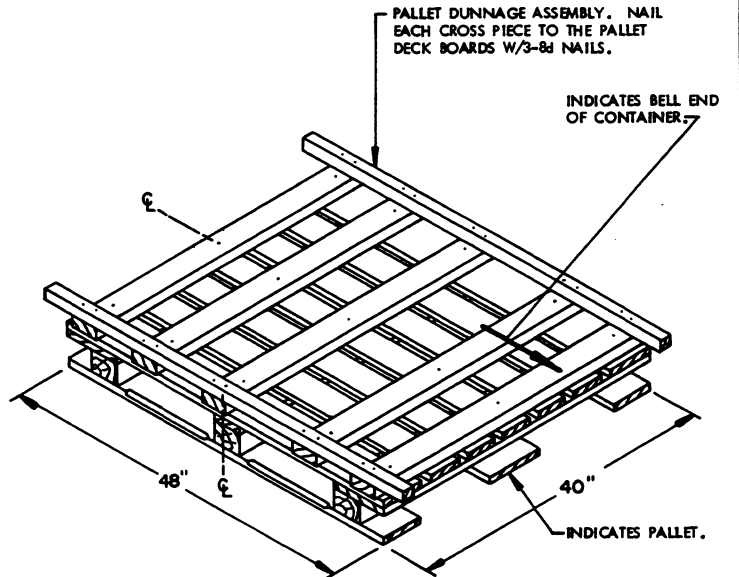


PARTIAL VIEW B

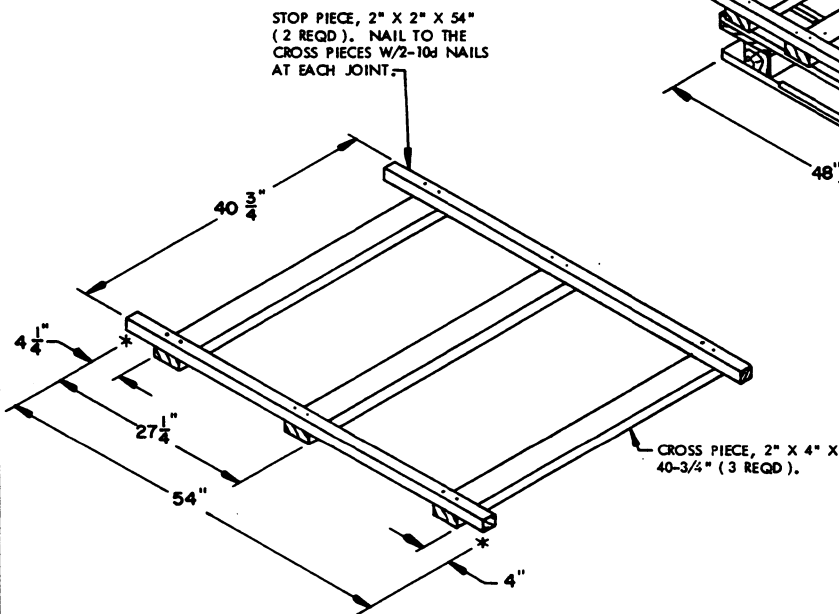
UNIT B (FLAT DUNNAGE)



PALLET DUNNAGE ASSEMBLY
(1 REQD)



PALLET DUNNAGE LOCATION



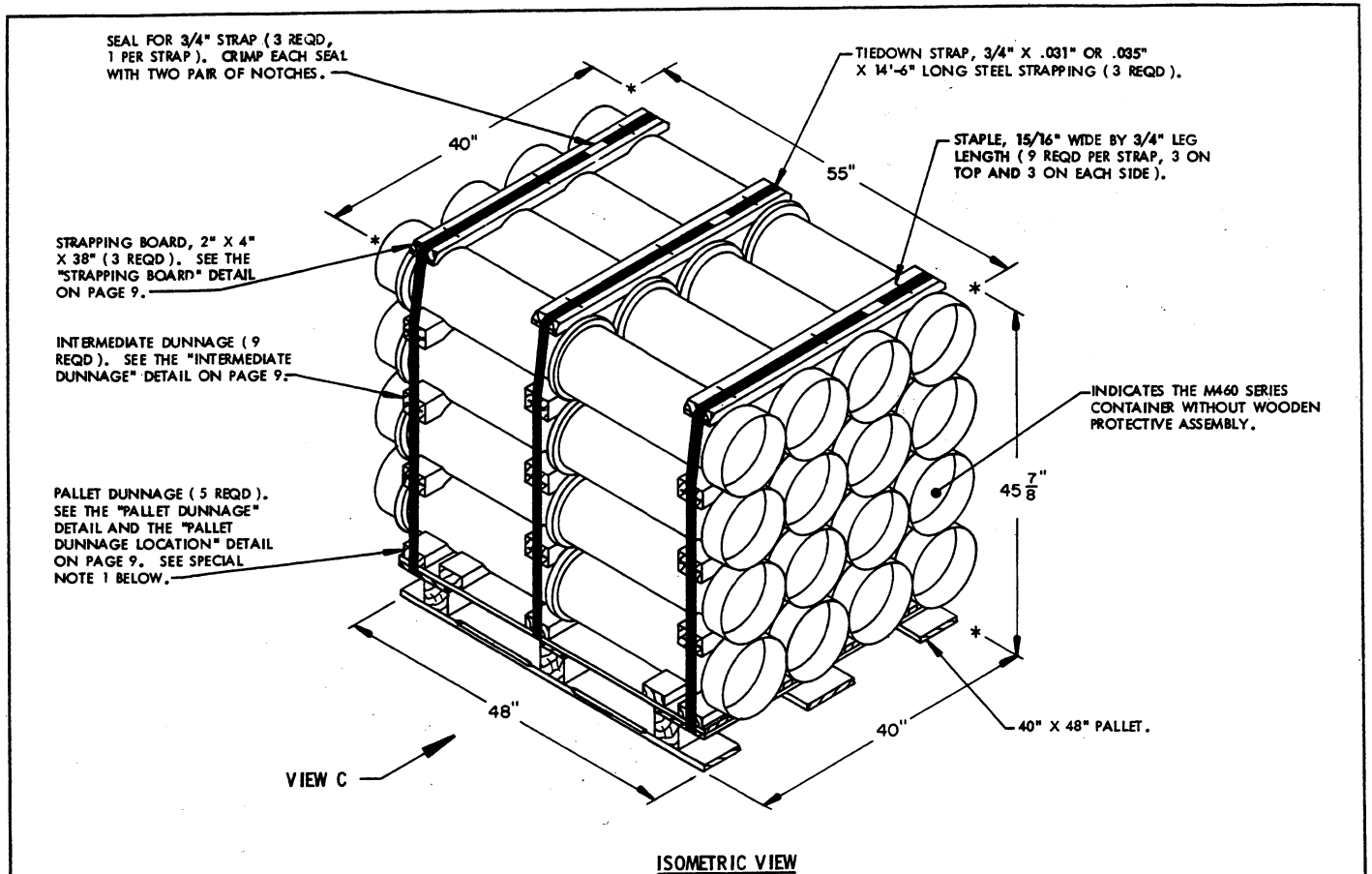
INTERMEDIATE DUNNAGE ASSEMBLY
(3 REQD)

UNIT DATA

WEIGHT

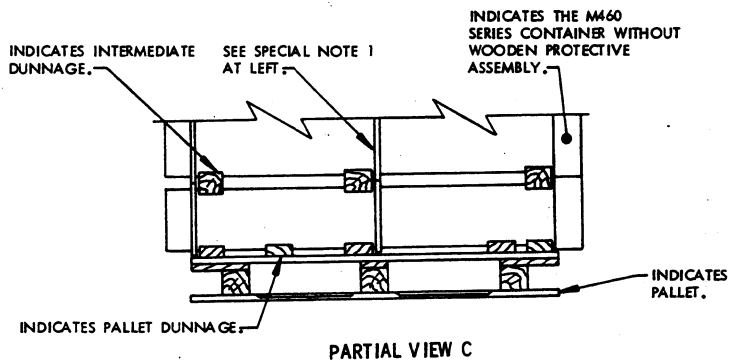
CUBE	60.0 CUBIC FEET (APPROX)	
CONTAINER, M460 SERIES	16 EA @ 106 LBS	1,696 LBS (APPROX)
DUNNAGE		103 LBS
PALLET		80 LBS
TOTAL WEIGHT		1,879 LBS (APPROX)

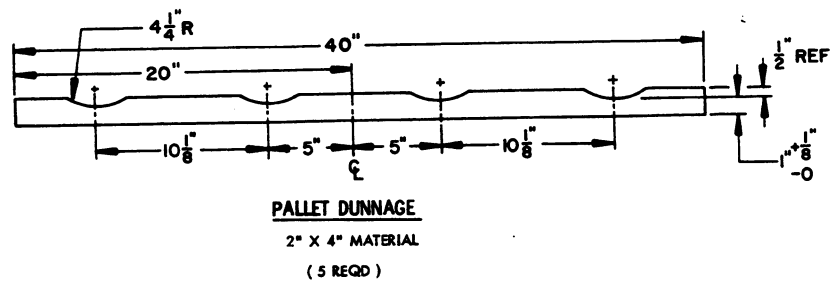
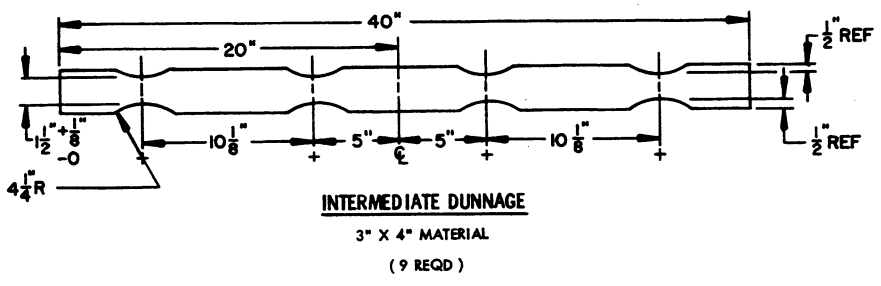
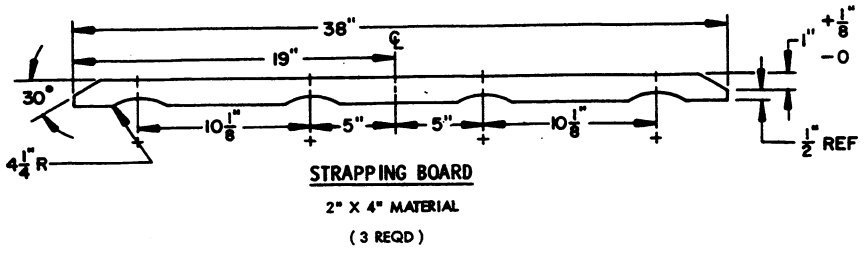
BILL OF MATERIAL			
LUMBER	NO. REQD	LINEAR FEET	BOARD FEET
2" X 2" X 54"	8	36.00	12.00
2" X 4" X 34"	3	8.50	5.67
2" X 4" X 40-3/4"	14	47.54	31.69
NAILS		NO. REQD	POUNDS
8d (2-1/2")		15	0.16
10d (3")		56	0.86
PALLET, 40" X 48"		1 REQD	80 LBS
STEEL STRAPPING, 3/4" X .031" OR .035"		44.00' REQD	3.14 LBS
SEAL FOR 3/4" STRAP		3 REQD	NIL
STAPLE, 15/16" X 3/4"		21 REQD	NIL



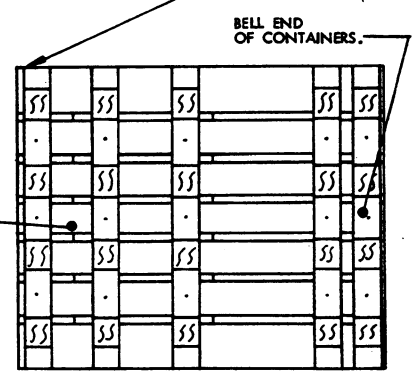
SPECIAL NOTES:

1. THE M460 SERIES CONTAINER WITHOUT WOODEN PROTECTIVE ASSEMBLY DEPICTED ABOVE IS BASED ON THE LOCATION OF THE MIDDLE RING BEING 28-5/16" FROM THE BASE OF THE CONTAINER. VARIATION OF THE RING LOCATION WILL REQUIRE ADJUSTMENT OF THE DIMENSIONS GIVEN ON PAGE 9.
2. THE UNIT DEPICTED ABOVE MAY BE REDUCED BY ONE COMPLETE LAYER OF CONTAINERS BY THE DELETION OF THREE INTERMEDIATE DUNNAGE PIECES AND FOUR CONTAINERS, AND BY DECREASING THE STRAP LENGTHS APPROPRIATELY. THIS WILL RESULT IN AN OVERALL UNIT HEIGHT OF 35-7/8".

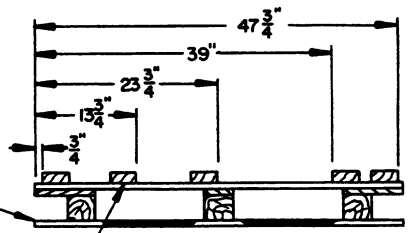




PALLET DUNNAGE. NAIL EACH PIECE TO THE PALLET DECK BOARDS W/3-Bd NAILS.



PLAN VIEW



ELEVATION VIEW
PALLET DUNNAGE LOCATION

BILL OF MATERIAL			
LUMBER	NO. REQD	LINEAR FEET	BOARD FEET
2" X 4" X 38"	3	9.50	6.33
2" X 4" X 40"	5	16.67	11.11
3" X 4" X 40"	9	30.00	30.00
NAILS		NO. REQD	POUNDS
8d (2-1/2")		15	0.16
PALLET, 40" X 48"		1 REQD	80 LBS
STEEL STRAPPING, 3/4" X .031" OR .035"		43.50' REQD	3.11 LBS
SEAL FOR 3/4" STRAP		3 REQD	NIL
STAPLE, 15/16" X 3/4"		27 REQD	NIL

UNIT DATA

WEIGHT

CUBE	58.4 CUBIC FEET (APPROX)	
CONTAINER, M460 SERIES	16 EA @ 106 LBS	1,696 LBS (APPROX)
DUNNAGE		99 LBS
PALLET		80 LBS
TOTAL WEIGHT		1,875 LBS (APPROX)

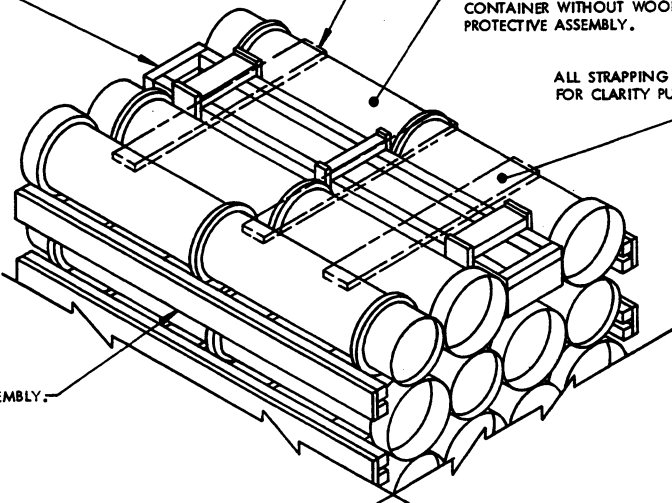
FILLER (1 REQD). SEE THE "FILLER A" DETAIL ON PAGE 11.

INDICATES A STRAPPING BOARD.

INDICATES THE M460 SERIES CONTAINER WITHOUT WOODEN PROTECTIVE ASSEMBLY.

ALL STRAPPING HAS BEEN OMITTED FOR CLARITY PURPOSES.

INDICATES AN INTERMEDIATE DUNNAGE ASSEMBLY.



DETAIL A

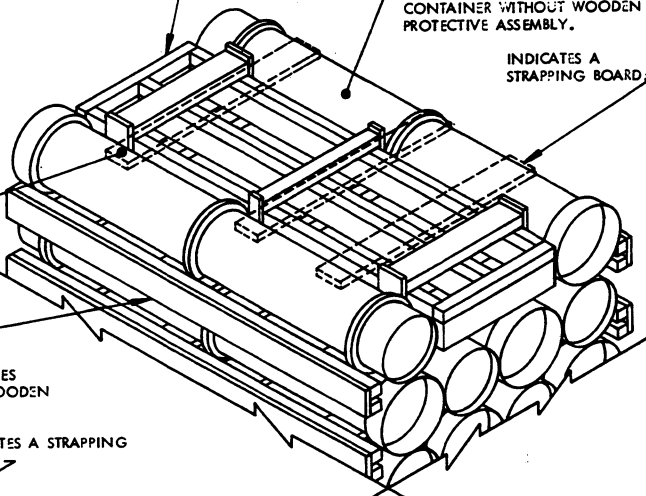
THIS DETAIL DEPICTS PROCEDURES TO BE USED WHEN A STANDARD UNIT MINUS ONE CONTAINER IS TO BE UNITIZED. THIS ASSEMBLY MUST BE INSTALLED IN THE MIDDLE OF THE TOP LAYER OF THE PALLET UNIT.

FILLER (1 REQD). SEE THE "FILLER B" DETAIL ON PAGE 11.

INDICATES THE M460 SERIES CONTAINER WITHOUT WOODEN PROTECTIVE ASSEMBLY.

INDICATES A STRAPPING BOARD.

ALL STRAPPING HAS BEEN OMITTED FOR CLARITY PURPOSES.



DETAIL B

THIS DETAIL DEPICTS PROCEDURES TO BE USED WHEN A STANDARD UNIT MINUS TWO CONTAINERS IS TO BE UNITIZED. THIS ASSEMBLY MUST BE INSTALLED IN THE MIDDLE OF THE TOP LAYER OF THE PALLET UNIT.

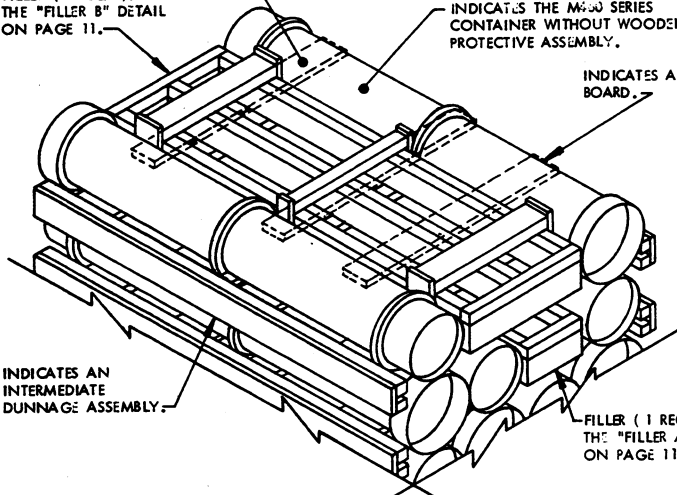
ALL STRAPPING HAS BEEN OMITTED FOR CLARITY PURPOSES.

FILLER (1 REQD). SEE THE "FILLER B" DETAIL ON PAGE 11.

INDICATES AN INTERMEDIATE DUNNAGE ASSEMBLY.

INDICATES THE M460 SERIES CONTAINER WITHOUT WOODEN PROTECTIVE ASSEMBLY.

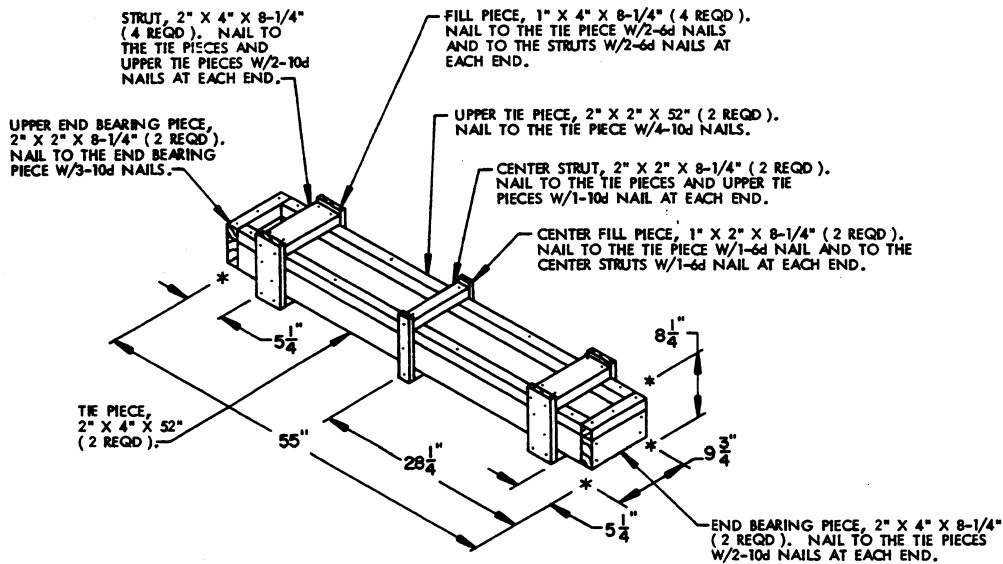
INDICATES A STRAPPING BOARD.



DETAIL C

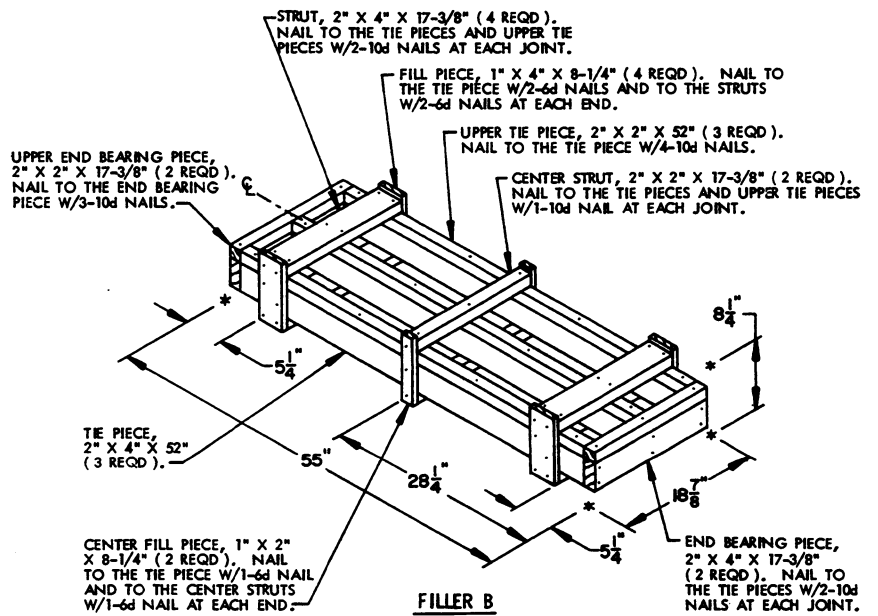
THIS DETAIL DEPICTS PROCEDURES TO BE USED WHEN A STANDARD UNIT MINUS THREE CONTAINERS IS TO BE UNITIZED. WHEN FOUR CONTAINERS ARE TO BE OMITTED FROM A PALLET UNIT, A COMPLETE LAYER OF CONTAINERS MUST BE OMITTED. A COMBINATION OF FILLERS OR ONE OF THE FILLERS DEPICTED ON PAGE 11 MAY BE USED WHEN THREE OR LESS CONTAINERS ARE TO BE OMITTED FROM A PALLET UNIT. ALL FILLER ASSEMBLIES MUST BE INSTALLED IN THE MIDDLE OF THE TOP LAYER OR LAYERS OF A PALLET UNIT.

FILLER (1 REQD). SEE THE "FILLER A" DETAIL ON PAGE 11.



FILLER A

THIS FILLER IS TO BE USED WHEN ONE CONTAINER IS TO BE OMITTED FROM A PALLET UNIT, OR IN COMBINATION WITH OTHER FILLER ASSEMBLIES.



FILLER B

THIS FILLER IS TO BE USED WHEN TWO CONTAINERS ARE TO BE OMITTED FROM A PALLET UNIT, OR IN COMBINATION WITH OTHER FILLER ASSEMBLIES.

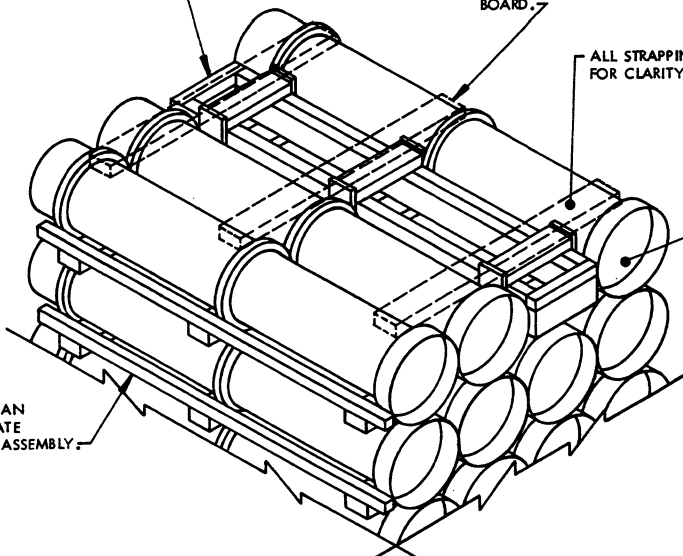
FILLER (1 REQD). SEE THE "FILLER C" DETAIL ON PAGE 13.

INDICATES A STRAPPING BOARD.

ALL STRAPPING HAS BEEN OMITTED FOR CLARITY PURPOSES.

INDICATES THE M460 SERIES CONTAINER WITHOUT WOODEN PROTECTIVE COVER.

INDICATES AN INTERMEDIATE DUNNAGE ASSEMBLY.



DETAIL D

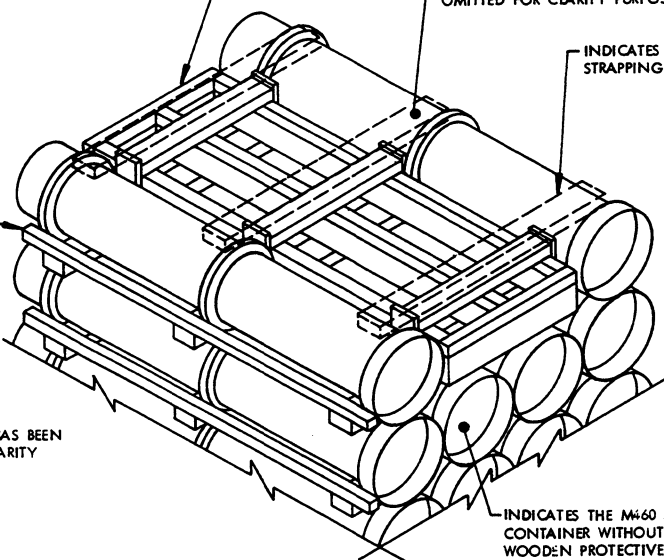
THIS DETAIL DEPICTS PROCEDURES TO BE USED WHEN A STANDARD UNIT MINUS ONE CONTAINER IS TO BE UNITIZED. THIS ASSEMBLY MUST BE INSTALLED IN THE MIDDLE OF THE TOP LAYER OF THE PALLET UNIT.

FILLER (1 REQD). SEE THE "FILLER D" DETAIL ON PAGE 13.

ALL STRAPPING HAS BEEN OMITTED FOR CLARITY PURPOSES.

INDICATES A STRAPPING BOARD.

INDICATES AN INTERMEDIATE DUNNAGE ASSEMBLY.



DETAIL E

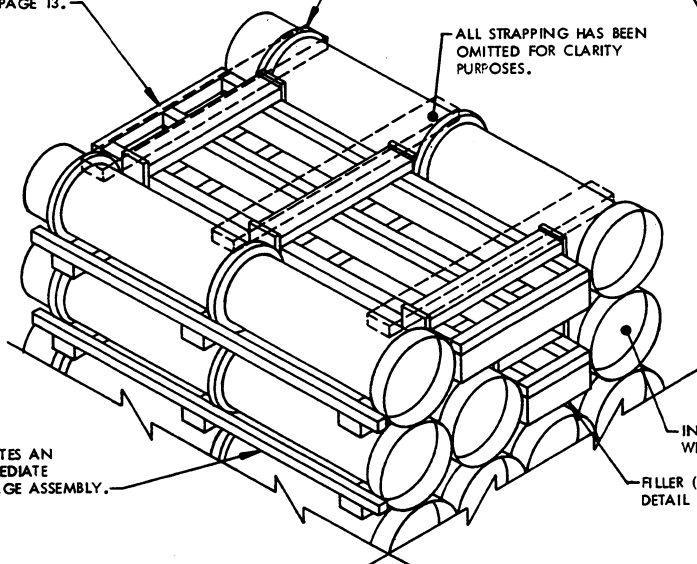
THIS DETAIL DEPICTS PROCEDURES TO BE USED WHEN A STANDARD UNIT MINUS TWO CONTAINERS IS TO BE UNITIZED. THIS ASSEMBLY MUST BE INSTALLED IN THE MIDDLE OF THE TOP LAYER OF THE PALLET UNIT.

FILLER (1 REQD). SEE THE "FILLER D" DETAIL ON PAGE 13.

INDICATES A STRAPPING BOARD.

ALL STRAPPING HAS BEEN OMITTED FOR CLARITY PURPOSES.

INDICATES THE M460 SERIES CONTAINER WITHOUT WOODEN PROTECTIVE ASSEMBLY.



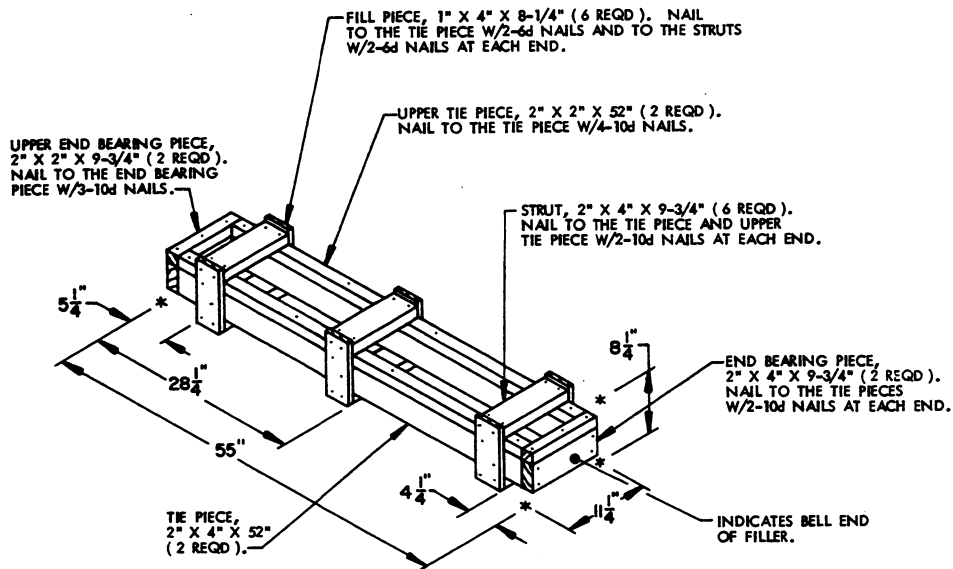
INDICATES THE M460 SERIES CONTAINER WITHOUT WOODEN PROTECTIVE ASSEMBLY.

FILLER (1 REQD). SEE THE "FILLER C" DETAIL ON PAGE 13.

INDICATES AN INTERMEDIATE DUNNAGE ASSEMBLY.

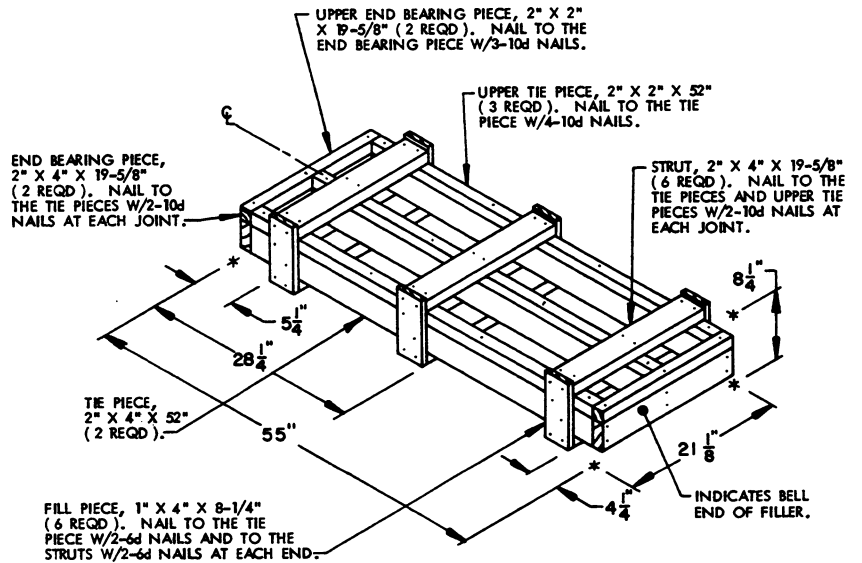
DETAIL F

THIS DETAIL DEPICTS PROCEDURES TO BE USED WHEN A STANDARD UNIT MINUS THREE CONTAINERS IS TO BE UNITIZED. WHEN FOUR CONTAINERS ARE TO BE OMITTED FROM A PALLET UNIT, A COMPLETE LAYER OF CONTAINERS MUST BE OMITTED. A COMBINATION OF FILLERS OR ONE OF THE FILLERS DEPICTED ON PAGE 13 MAY BE USED WHEN THREE OR LESS CONTAINERS ARE TO BE OMITTED FROM A PALLET UNIT. ALL FILLER ASSEMBLIES MUST BE INSTALLED IN THE MIDDLE OF THE TOP LAYER OR LAYERS OF A PALLET UNIT.



FILLER C

THIS FILLER IS TO BE USED WHEN ONE CONTAINER IS TO BE OMITTED FROM A PALLET UNIT, OR IN COMBINATION WITH OTHER FILLER ASSEMBLIES.



FILLER D

THIS FILLER IS TO BE USED WHEN TWO CONTAINERS ARE TO BE OMITTED FROM A PALLET UNIT, OR IN COMBINATION WITH OTHER FILLER ASSEMBLIES.

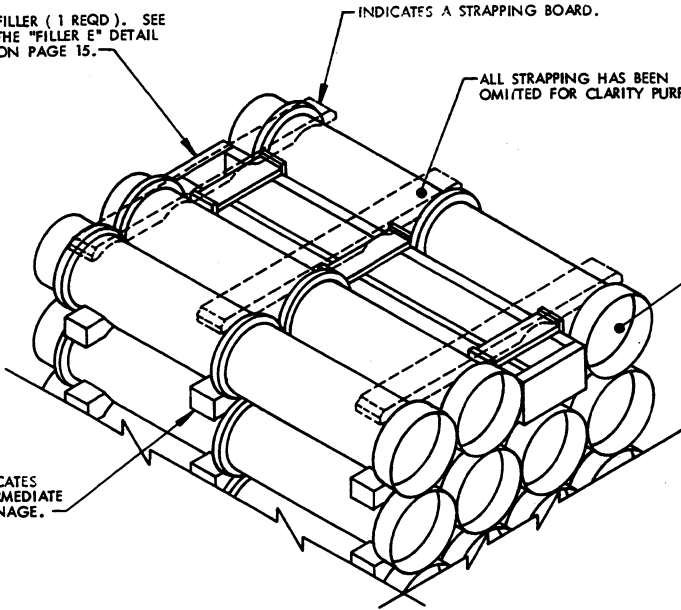
FILLER (1 REQD). SEE THE "FILLER E" DETAIL ON PAGE 15.

INDICATES A STRAPPING BOARD.

ALL STRAPPING HAS BEEN OMITTED FOR CLARITY PURPOSES.

INDICATES THE M460 SERIES CONTAINER WITHOUT WOODEN PROTECTIVE ASSEMBLY.

INDICATES INTERMEDIATE DUNNAGE.



DETAIL G

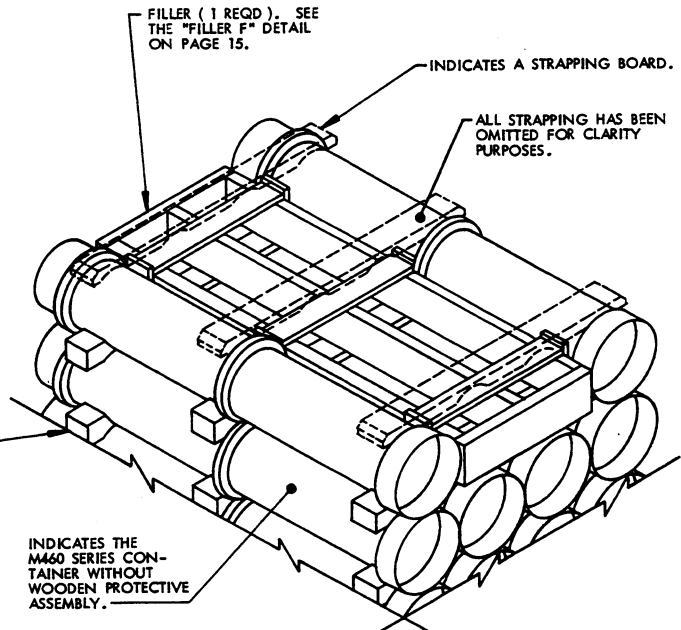
THIS DETAIL DEPICTS PROCEDURES TO BE USED WHEN A STANDARD UNIT MINUS ONE CONTAINER IS TO BE UNITIZED. THIS ASSEMBLY MUST BE INSTALLED IN THE MIDDLE OF THE TOP LAYER OF THE PALLET UNIT.

FILLER (1 REQD). SEE THE "FILLER F" DETAIL ON PAGE 15.

INDICATES A STRAPPING BOARD.

ALL STRAPPING HAS BEEN OMITTED FOR CLARITY PURPOSES.

INDICATES INTERMEDIATE DUNNAGE.



DETAIL H

THIS DETAIL DEPICTS PROCEDURES TO BE USED WHEN A STANDARD UNIT MINUS TWO CONTAINERS IS TO BE UNITIZED. THIS ASSEMBLY IS TO BE INSTALLED IN THE MIDDLE OF THE TOP LAYER OF THE PALLET UNIT.

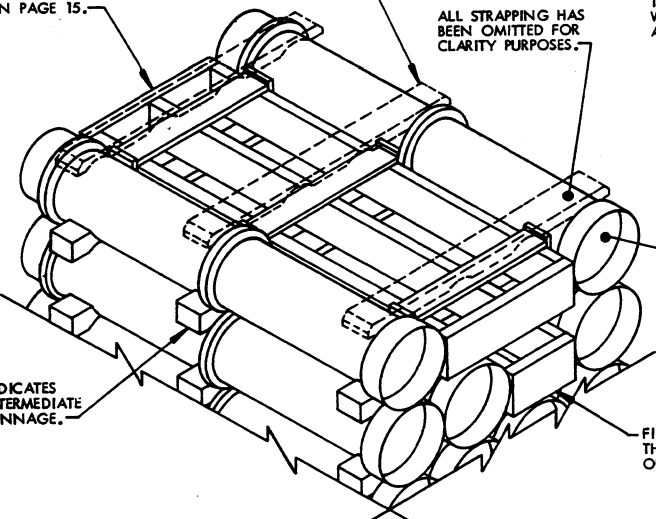
FILLER (1 REQD). SEE THE "FILLER F" DETAIL ON PAGE 15.

INDICATES A STRAPPING BOARD.

ALL STRAPPING HAS BEEN OMITTED FOR CLARITY PURPOSES.

INDICATES THE M460 SERIES CONTAINER WITHOUT WOODEN PROTECTIVE ASSEMBLY.

INDICATES INTERMEDIATE DUNNAGE.



INDICATES THE M460 SERIES CONTAINER WITHOUT WOODEN PROTECTIVE ASSEMBLY.

FILLER (1 REQD). SEE THE "FILLER E" DETAIL ON PAGE 15.

DETAIL J

THIS DETAIL DEPICTS PROCEDURES TO BE USED WHEN A STANDARD UNIT MINUS THREE CONTAINERS IS TO BE UNITIZED. WHEN FOUR CONTAINERS ARE TO BE OMITTED FROM A PALLET UNIT, A COMPLETE LAYER OF CONTAINERS MUST BE OMITTED. A COMBINATION OF FILLERS OR ONE OF THE FILLERS DEPICTED ON PAGE 15 MAY BE USED WHEN THREE OR LESS CONTAINERS ARE TO BE OMITTED FROM A PALLET UNIT. ALL FILLER ASSEMBLIES MUST BE INSTALLED IN THE MIDDLE OF THE TOP LAYER OR LAYERS OF A PALLET UNIT.

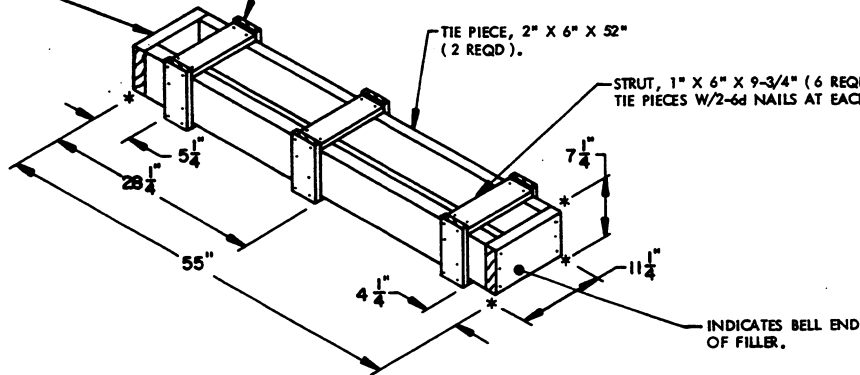
FILLERS AND INSTALLATION PROCEDURES FOR OMITTED CONTAINERS (ROUTED DUNNAGE UNITS)

END BEARING PIECE,
2" X 6" X 9-3/4" (2 REQD).
NAIL TO THE TIE PIECES
W/3-10d NAILS AT EACH
END.

FILL PIECE, 1" X 4" X 7-1/4" (6 REQD).
NAIL TO THE TIE PIECE W/2-6d NAILS
AND TO THE STRUTS W/2-6d NAILS AT
EACH END.

TIE PIECE, 2" X 6" X 52"
(2 REQD).

STRUT, 1" X 6" X 9-3/4" (6 REQD). NAIL TO THE
TIE PIECES W/2-6d NAILS AT EACH END.



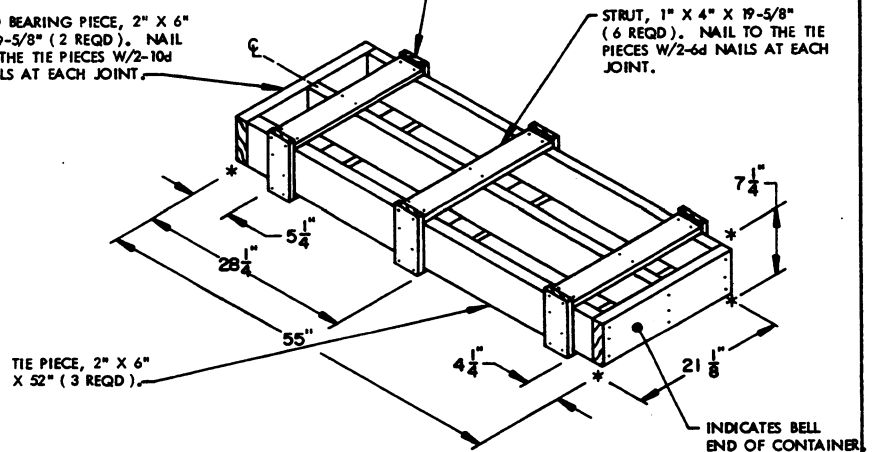
FILLER E

THIS FILLER IS TO BE USED WHEN ONE CONTAINER IS TO
BE OMITTED FROM A PALLET UNIT, OR IN COMBINATION
WITH OTHER FILLER ASSEMBLIES.

END BEARING PIECE, 2" X 6"
X 19-5/8" (2 REQD). NAIL
TO THE TIE PIECES W/2-10d
NAILS AT EACH JOINT.

FILL PIECE, 1" X 4" X 7-1/4" (6 REQD).
NAIL TO THE TIE PIECE W/2-6d NAILS AND
TO THE STRUTS W/2-6d NAILS AT EACH END.

STRUT, 1" X 4" X 19-5/8"
(6 REQD). NAIL TO THE TIE
PIECES W/2-6d NAILS AT EACH
JOINT.



FILLER F

THIS FILLER IS TO BE USED WHEN TWO CONTAINERS ARE
TO BE OMITTED FROM A PALLET UNIT, OR IN COMBINATION
WITH OTHER FILLER ASSEMBLIES.

