

APPENDIX 4

UNITIZING PROCEDURES FOR PROPELLING CHARGES PACKED IN CYLINDRICAL METAL CONTAINERS ON 4-WAY ENTRY PALLETS

M16 SERIES CONTAINERS

INDEX

<u>ITEM</u>	<u>PAGE (S)</u>
GENERAL NOTES -----	2
UNIT A (ALTERNATED CONTAINERS) -----	4,5
UNIT B (FLAT DUNNAGE) -----	6,7
UNIT C (ROUTED DUNNAGE) -----	8,9
FILLERS AND INSTALLATION PROCEDURES FOR OMITTED CONTAINERS:	
UNIT A (ALTERNATED CONTAINERS) -----	10,11
UNIT B (FLAT DUNNAGE) -----	12,13
UNIT C (ROUTED DUNNAGE) -----	14,15

PALLET UNIT DATA						
ITEMS INCLUDED		HAZARD CLASSIFICATION ●				WEIGHT (LBS)
NSN	DODIC	DOT CLASS	CG CLASS	QD CLASS	COMP GROUP	
1320-00-028-4369	D480	B	II-A	1.3	C	1,472
028-4525	D481	—	—	—	—	TO
028-4371	D480	B	II-A	1.3	C	1,870

NOTICE: THIS APPENDIX CANNOT STAND ALONE BUT MUST BE USED IN CONJUNCTION WITH THE BASIC UNITIZATION PROCEDURES DRAWING 19-48-4042-20PM1001.

THIS DRAWING SUPERSEDES PART OF DRAWING 19-48-4042-1-2-5-11-14PM1000, DATED 8 FEBRUARY 1965, AND REVISION NO. 1, THERETO, DATED 29 AUGUST 1969.

● HAZARD CLASSIFICATION DATA CONTAINED IN THE ABOVE CHART IS FOR GUIDANCE AND INFORMATIONAL PURPOSES ONLY. VERIFICATION OF THE SPECIFIED DATA SHOULD BE MADE BY CONSULTING THE MOST RECENT JOINT HAZARD CLASSIFICATION SYSTEM LISTING OR OTHER APPROVED LISTING (S).

DO NOT SCALE

REVISIONS		DRAWN	CHECKED	PROJ. ENG.	LOG. OFFICE
1	JUL 86	<i>William F. Ernst</i>	<i>John R. ...</i>	<i>WRF/HMW</i>	<i>R-1</i>
		APPROVED, U. S. ARMY ARMAMENT MATERIEL READINESS COMMAND			
		APPROVED BY ORDER OF COMMANDING GENERAL, U. S. ARMY MATERIEL DEVELOPMENT AND READINESS COMMAND (DARCOM)			
		U. S. ARMY DEFENSE AMMUNITION CENTER AND SCHOOL			
		U. S. ARMY DARCOM DRAWING			
		OCTOBER 1979			
CLASS	DIVISION	DRAWING	FILE		
19	48	4042A/4	20PM1001		

GENERAL NOTES

- A. THIS APPENDIX CANNOT STAND ALONE BUT MUST BE USED IN CONJUNCTION WITH THE BASIC UNITIZING PROCEDURES DRAWING 19-48-4042-20PM1001. TO PRODUCE AN APPROVED UNIT LOAD, ALL PERTINENT PROCEDURES, SPECIFICATIONS AND CRITERIA SET FORTH WITHIN THE BASIC DRAWING WILL APPLY TO THE PROCEDURES DELINEATED IN THIS APPENDIX. ANY EXCEPTIONS TO THE BASIC PROCEDURES ARE SPECIFIED IN THIS APPENDIX.
- B. DIMENSIONS, CUBE, AND WEIGHT OF A PALLET UNIT WILL VARY SLIGHTLY DEPENDING UPON THE ACTUAL DIMENSIONS OF THE CONTAINER, WEIGHT OF THE SPECIFIC ITEM, AND METHOD OF UNITIZATION.
- C. UNLOADING AND STORAGE OF THE ITEMS COVERED BY THIS APPENDIX SHALL BE ACCOMPLISHED IN ACCORDANCE WITH AMC (DARCOM) DRAWINGS IDENTIFIED WITHIN DA PAMPHLET 75-5.
- D. FOR METHOD OF SECURING A STRAP CUTTER TO THE PALLET UNIT, SEE DARCOM DRAWING 19-48-4127-20P1000.
- E. IF ITEMS COVERED HEREIN ARE UNITIZED PRIOR TO ISSUANCE OF THIS APPENDIX, THE CONTAINERS NEED NOT BE REUNITIZED SOLELY TO CONFORM TO THIS APPENDIX.
- F. THE UNITIZATION PROCEDURES DEPICTED HEREIN MAY ALSO BE USED FOR UNITIZING PROPELLING CHARGES WHEN IDENTIFIED BY A DIFFERENT NATIONAL STOCK NUMBER (NSN) THAN THOSE SHOWN ON THE COVER PAGE, PROVIDED THE ITEM IS PACKED IN THE M16 SERIES CONTAINER. THE EXPLOSIVE CLASSIFICATION OF OTHER ITEMS MAY BE DIFFERENT THAN THOSE SHOWN.
- G. FOR DETAILS OF THE M16 SERIES CONTAINER, SEE PICATINNY ARSENAL DRAWING NO. 880529.

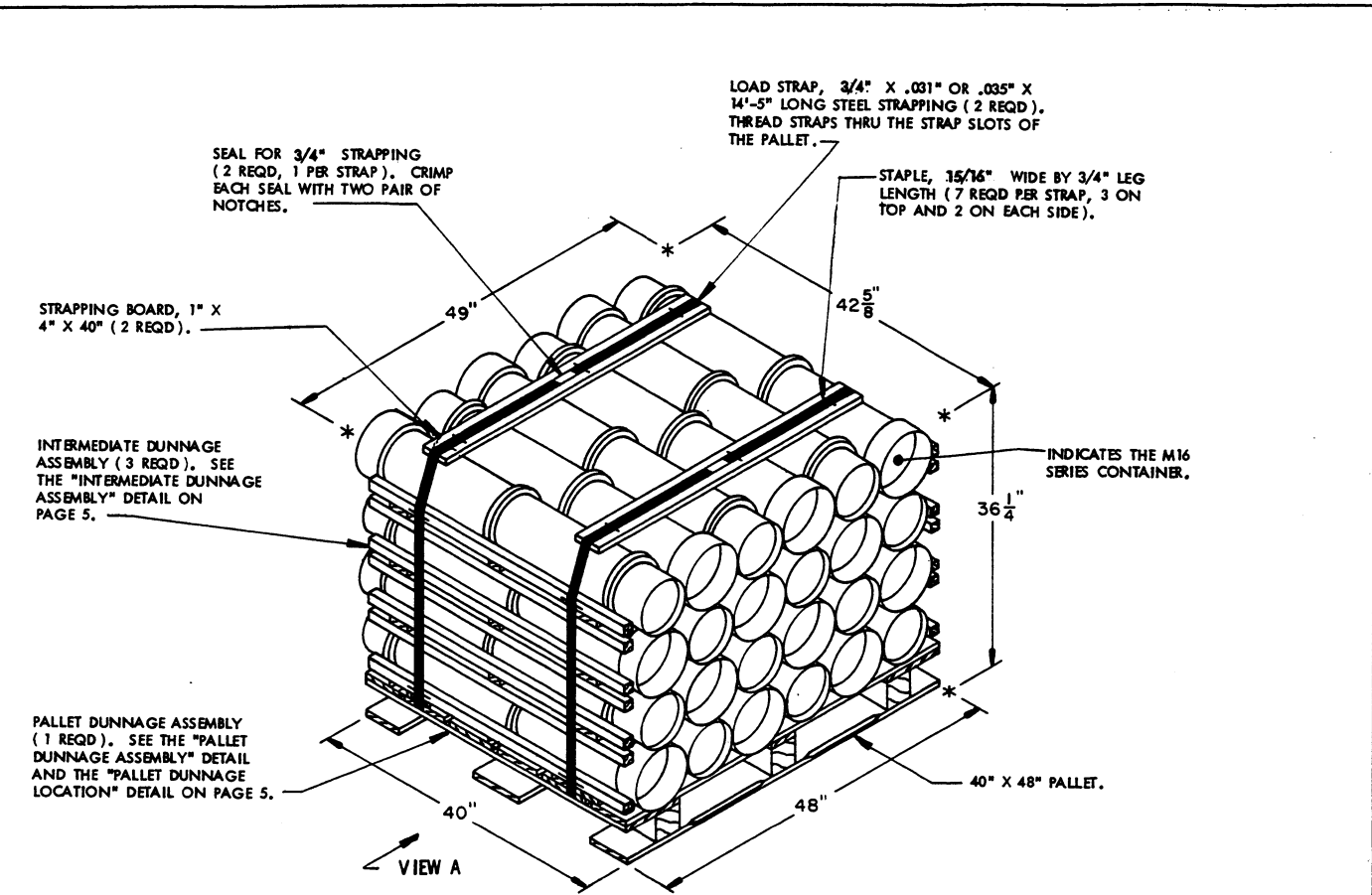
CONTAINER DIMENSIONS ---- 42-21/32" LONG BY 8-13/32" DIAMETER.
CONTAINER CUBE ----- 1.4 CUBIC FEET.
CONTAINER WEIGHT
(WITH CHARGE) ----- 55 LBS (APPROX).

- H. THE SPECIFIED UNITIZING PROCEDURES SHOWN HEREIN DEPICT THREE DIFFERENT METHODS FOR UNITIZING THE M16 SERIES CONTAINERS:
 - 1. UNIT "A" DEPICTS CONTAINERS UNITIZED ON FLAT DUNNAGE WITH EVERY OTHER CONTAINER ALTERNATED (BASE END, BELL END, BASE END) INDIVIDUALLY AND BY LAYERS. SEE DETAILS ON PAGES 4 AND 5.
 - 2. UNIT "B" DEPICTS CONTAINERS UNITIZED ON FLAT DUNNAGE. SEE DETAILS ON PAGES 6 AND 7.
 - 3. UNIT "C" DEPICTS CONTAINERS UNITIZED ON ROUTED DUNNAGE. SEE DETAILS ON PAGES 8 AND 9.ALTHOUGH UNIT "A" DEPICTS THE PREFERRED METHOD OF UNITIZING THE M16 SERIES CONTAINERS, ALL THREE METHODS ARE APPROVED FOR USE.
- J. IF DEEMED MORE ECONOMICAL FOR SHIPPING AND STORAGE BY THE RESPONSIBLE COMMAND, THE UNITS DEPICTED IN THE FOLLOWING PAGES MAY HAVE ONE COMPLETE LAYER OF CONTAINERS EITHER ADDED OR DELETED, WHICHEVER IS APPLICABLE. FOR FURTHER UNITIZATION GUIDANCE, SEE SPECIAL NOTE 1 ON PAGES 4, 6, AND 8.

REVISION

REVISION NO. 1, DATED JULY 1986, CONSISTS OF:
CHANGING 1-1/4" STRAPPING TO 3/4" STRAPPING.

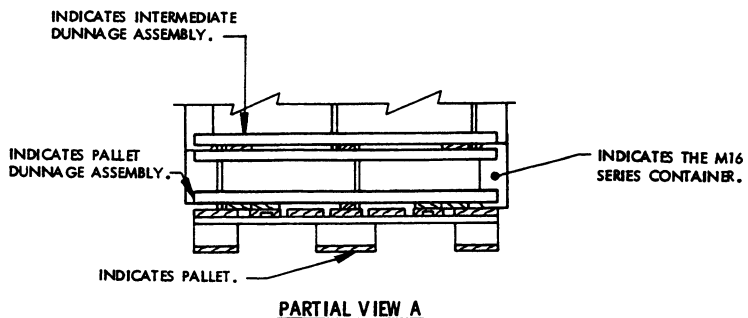
THIS PAGE HAS BEEN INTENTIONALLY LEFT BLANK.

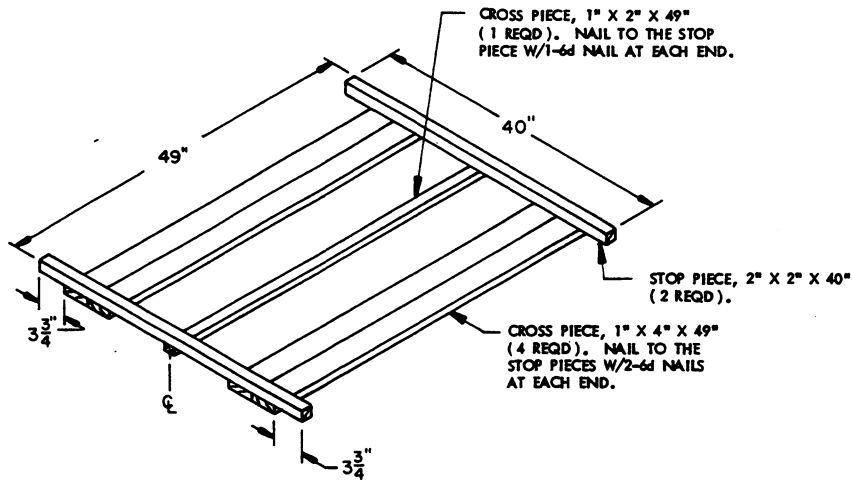


ISOMETRIC VIEW

SPECIAL NOTES:

1. THE UNIT DEPICTED ABOVE MAY BE INCREASED BY ONE COMPLETE LAYER OF CONTAINERS BY THE ADDITION OF ONE INTERMEDIATE DUNNAGE ASSEMBLY AND SIX CONTAINERS, BY INCREASING THE STRAP LENGTHS APPROPRIATELY AND USING 1-1/4" STRAPPING IN PLACE OF 3/4" STRAPPING. THIS WILL RESULT IN AN OVERALL UNIT HEIGHT OF 44".
2. IF DESIRED, A 1" X 6" PIECE CAN BE SUBSTITUTED FOR EACH SET OF TWO (SIDE BY SIDE) 1" X 4" PIECES ON THE PALLET DUNNAGE ASSEMBLY. EACH 1" X 6" PIECE WILL BE NAILED TO THE PALLET W/6-6d NAILS.



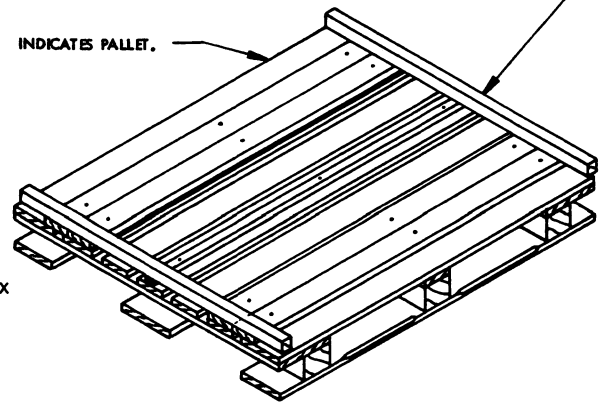


PALLET DUNNAGE ASSEMBLY

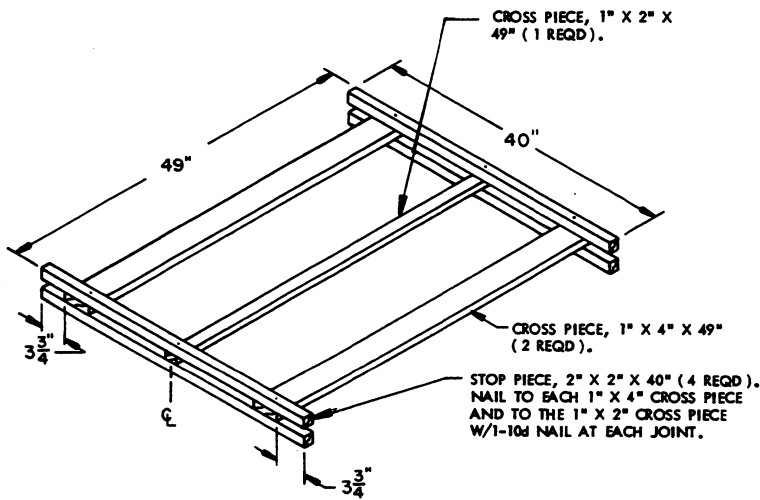
(1 REQD)

PALLET DUNNAGE ASSEMBLY. CENTER ON PALLET AND NAIL EACH CROSS PIECE TO THE PALLET DECK BOARDS W/3-6d NAILS. DO NOT NAIL THROUGH STRAP SLOTS.

INDICATES PALLET.



PALLET DUNNAGE LOCATION



INTERMEDIATE DUNNAGE ASSEMBLY

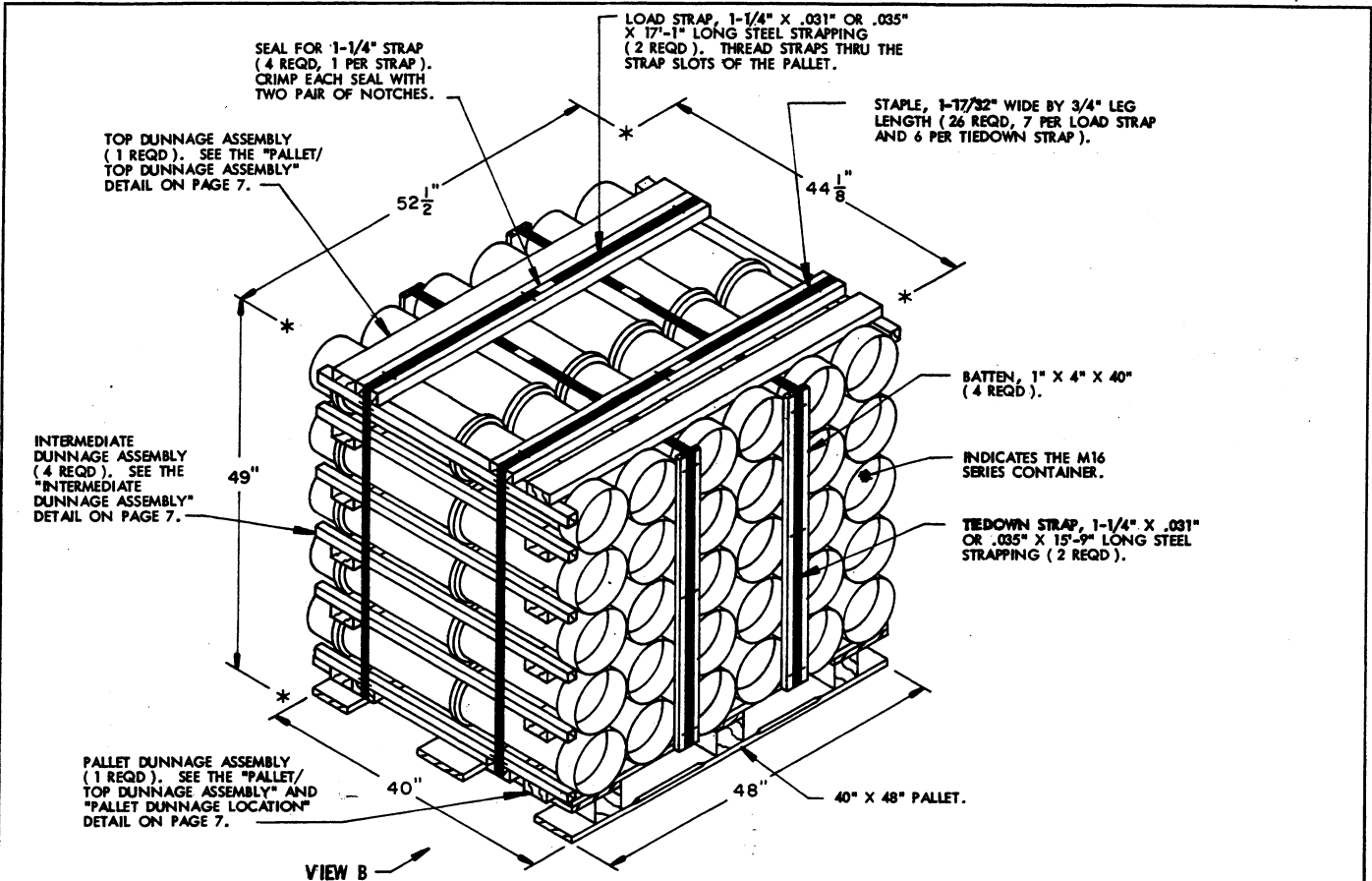
(3 REQD)

BILL OF MATERIAL			
LUMBER	NO. REQD	LINEAR FEET	BOARD FEET
1" X 2" X 49"	4	16.33	2.72
1" X 4" X 40"	2	6.67	2.22
1" X 4" X 49"	10	40.83	13.61
2" X 2" X 40"	14	46.67	15.56
NAILS		NO. REQD	POUNDS
6d (2")		33	0.19
10d (3")		36	0.55
PALLET, 40" X 48" ----- 1 REQD ----- 80 LBS			
STEEL STRAPPING, 3/4" X .031" OR .035" ----- 28.83 REQD ----- 2.06 LBS			
SEAL FOR 3/8" STRAPPING ----- 2 REQD ----- NIL			
STAPLE, 15/16" X 3/4" ----- 14 REQD ----- NIL			

UNIT DATA

WEIGHT

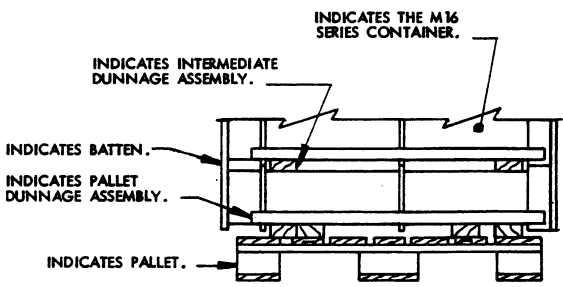
CUBE ----- 43.8 CUBIC FEET (APPROX)
 CONTAINER, M16 SERIES -- 24 EACH @ 55 LBS -- 1,320 LBS (APPROX)
 DUNNAGE ----- 72 LBS
 PALLET ----- 80 LBS
 TOTAL WEIGHT ----- 1,472 LBS (APPROX)



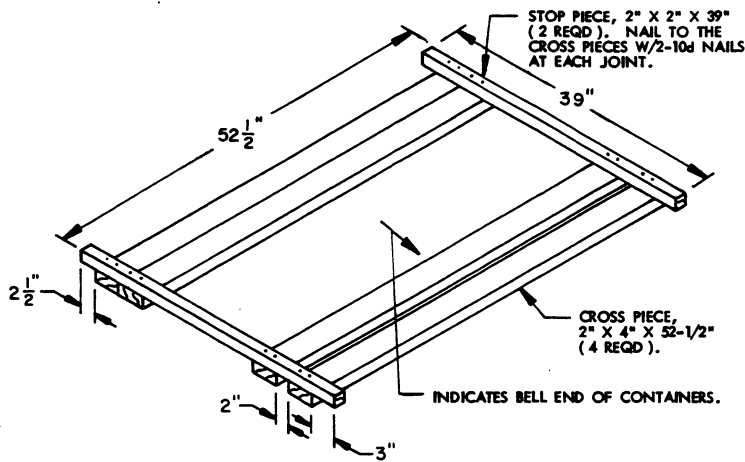
ISOMETRIC VIEW

SPECIAL NOTES:

1. THE UNIT DEPICTED ABOVE MAY BE REDUCED BY ONE COMPLETE LAYER OF CONTAINERS BY THE DELETION OF ONE INTERMEDIATE DUNNAGE ASSEMBLY AND SIX CONTAINERS, BY DECREASING STRAP LENGTHS APPROPRIATELY AND BY USING 3/4\"
2. IF DESIRED, A 2\"

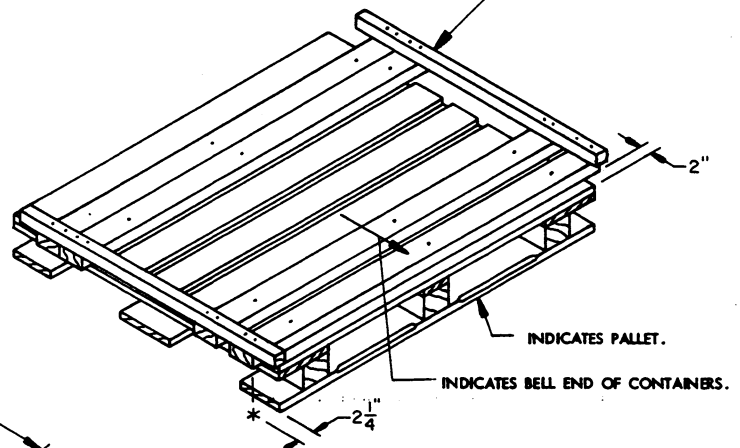


PARTIAL VIEW B

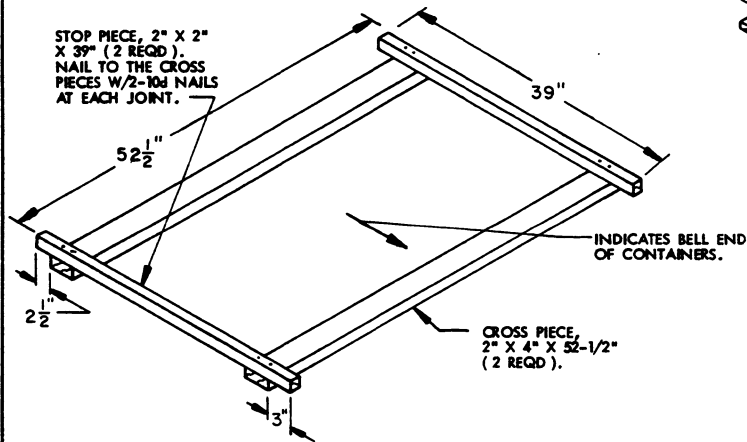


PALLET/TOP DUNNAGE ASSEMBLY
(2 REQD)

PALLET DUNNAGE ASSEMBLY.
NAIL EACH CROSS PIECE TO
THE PALLET DECK W/3-8d NAILS.
DO NOT NAIL THRU THE
STRAP SLOTS.



PALLET DUNNAGE LOCATION



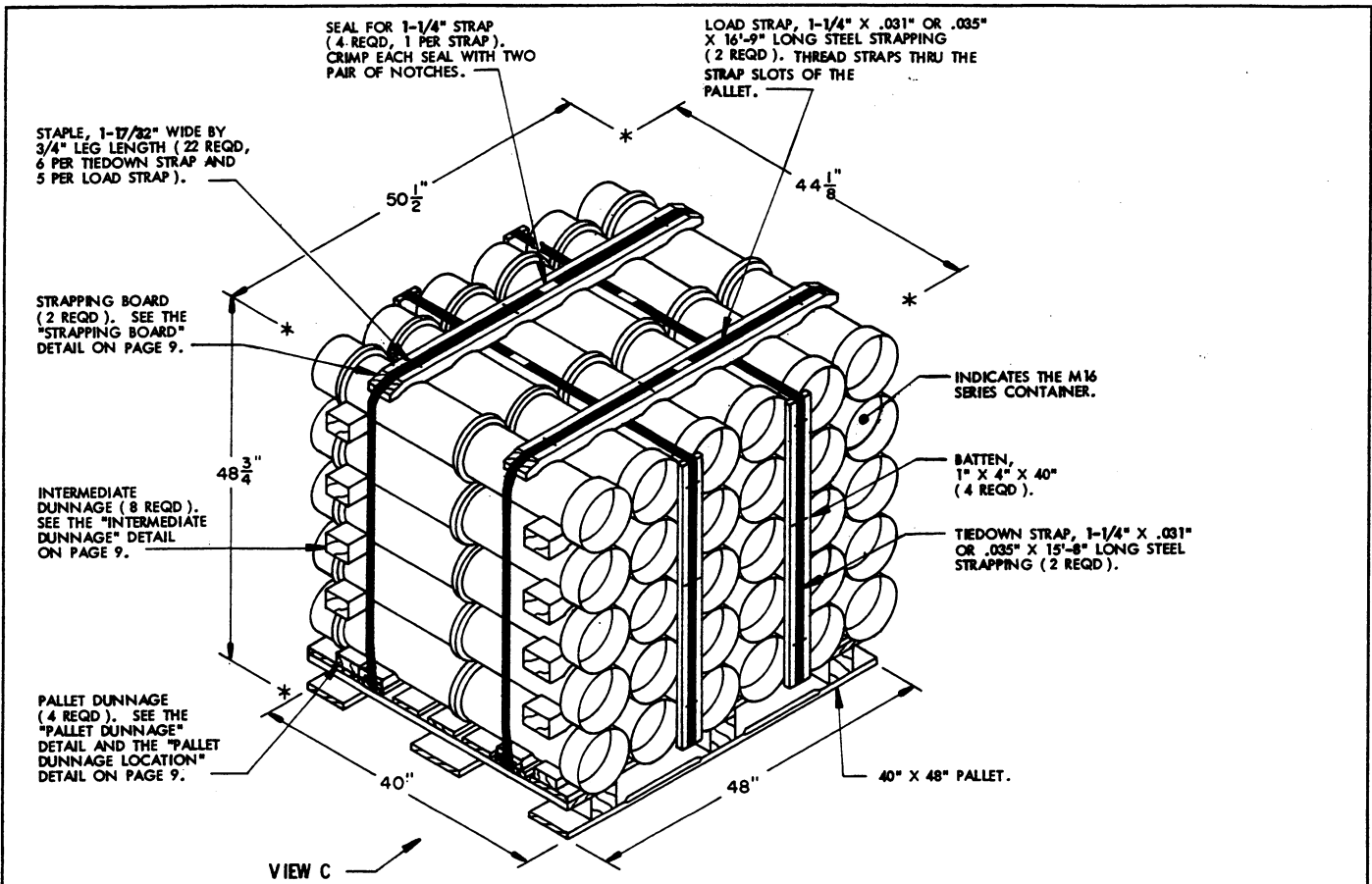
INTERMEDIATE DUNNAGE ASSEMBLY
(4 REQD)

UNIT DATA

WEIGHT

CUBE	65.7 CUBIC FEET (APPROX)	
CONTAINER, M16 SERIES	30 EACH @ 55 LBS	1,650 LBS (APPROX)
DUNNAGE		140 LBS
PALLET		80 LBS
TOTAL WEIGHT		1,870 LBS (APPROX)

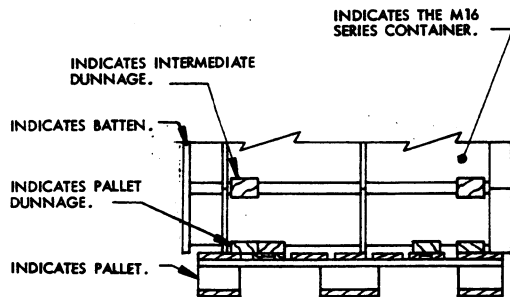
BILL OF MATERIAL			
LUMBER	NO. REQD	LINEAR FEET	BOARD FEET
1" X 4" X 40"	4	13.33	4.44
2" X 2" X 39"	12	39.00	13.00
2" X 4" X 53"	16	70.67	47.11
NAILS		NO. REQD	POUNDS
8d (2-1/2")		12	0.13
10d (3")		64	0.98
PALLET, 40" X 48"		1 REQD	80 LBS
STEEL STRAPPING, 1-1/4" X .081" OR .085"		65.67 REQD	9.38 LBS
SEAL FOR 1-1/4" STRAP		4 REQD	NIL
STAPLE, 1-17/32" X 3/4"		20 REQD	NIL



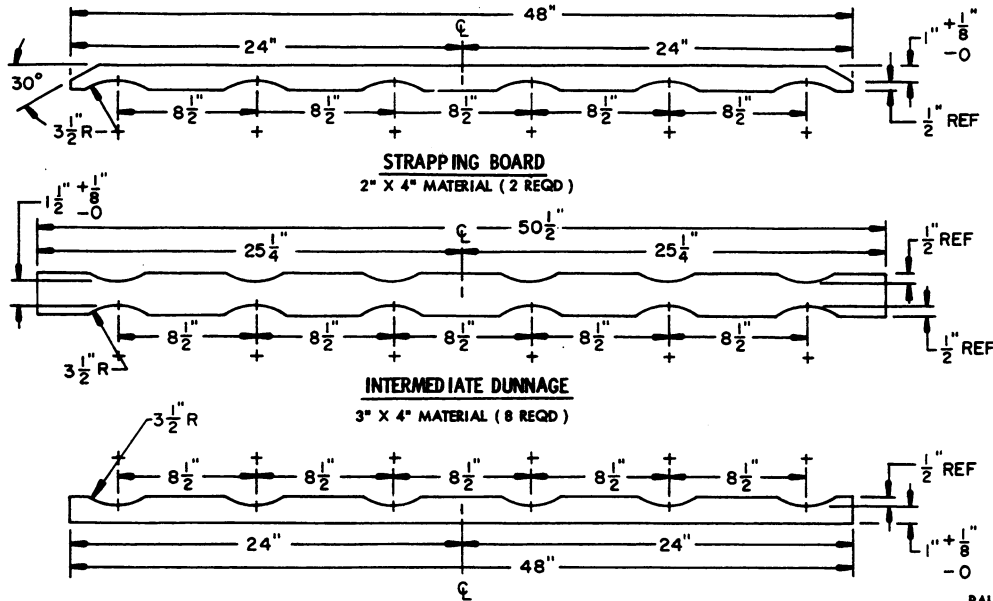
ISOMETRIC VIEW

SPECIAL NOTES:

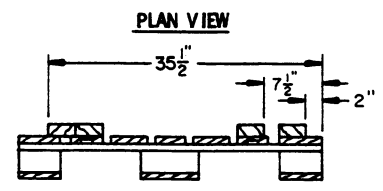
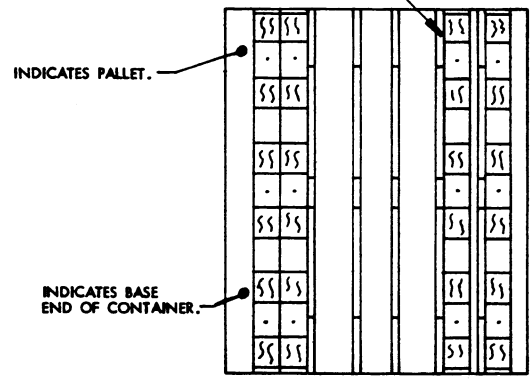
1. THE UNIT DEPICTED ABOVE MAY BE REDUCED BY ONE COMPLETE LAYER OF CONTAINERS BY THE DELETION OF TWO INTERMEDIATE DUNNAGE PIECES AND SIX CONTAINERS, BY DECREASING STRAP LENGTHS APPROPRIATELY AND BY USING 3/4" STRAPPING IN PLACE OF 1-1/4" STRAPPING. THIS WILL RESULT IN AN OVERALL UNIT HEIGHT OF 40-1/4".
2. IF DESIRED, A 2" X 6" PIECE CAN BE SUBSTITUTED FOR THE ONE SET OF TWO (SIDE BY SIDE) 2" X 4" PIECES OF PALLET DUNNAGE USED TO SUPPORT THE BASE END OF THE CONTAINERS. THE 2" X 6" PIECE WILL BE NAILED TO THE PALLET W/6-8d NAILS.



PARTIAL VIEW C



PALLET DUNNAGE (4 REQD).
NAIL EACH PIECE TO THE
PALLET DECK W/3-8d NAILS.
DO NOT NAIL THRU THE STRAP
SLOTS.



ELEVATION VIEW

PALLET DUNNAGE LOCATION

BILL OF MATERIAL			
LUMBER	NO. REQD	LINEAR FEET	BOARD FEET
1" X 4" X 48"	4	13.33	4.44
2" X 4" X 48"	6	24.00	16.00
3" X 4" X 50-1/2"	8	33.67	33.67
NAILS		NO. REQD	POUNDS
8d (2-1/2")		12	0.13
PALLET, 40" X 48"		1 REQD	80 LBS
STEEL STRAPPING, 1-1/4" X .031" OR .035"		64.83' REQD	9.26 LBS
SEAL FOR 1-1/8" STRAP		4 REQD	NIL
STAPLE, 1-17/32" X 3/4"		22 REQD	NIL

UNIT DATA

WEIGHT

CUBE	62.9 CUBIC FEET (APPROX)	
CONTAINER, M16 SERIES	30 EACH @ 55 LBS	1,650 LBS (APPROX)
DUNNAGE		118 LBS
PALLET		80 LBS
TOTAL WEIGHT		1,848 LBS (APPROX)

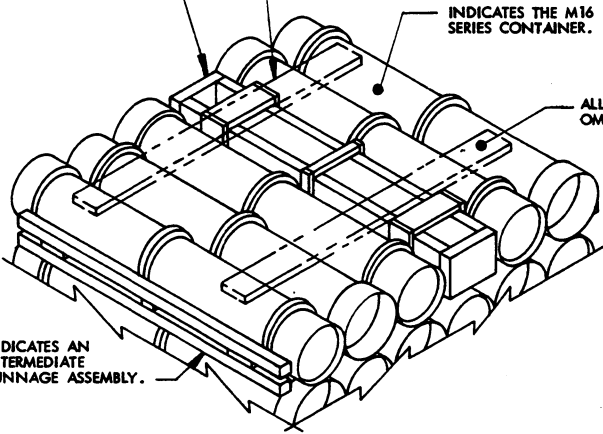
FILLER (1 REQD).
SEE THE "FILLER A"
DETAIL ON PAGE 11.

INDICATES A
STRAPPING BOARD.

INDICATES THE M16
SERIES CONTAINER.

ALL STRAPPING HAS BEEN
OMITTED FOR CLARITY PURPOSES.

INDICATES AN
INTERMEDIATE
DUNNAGE ASSEMBLY.



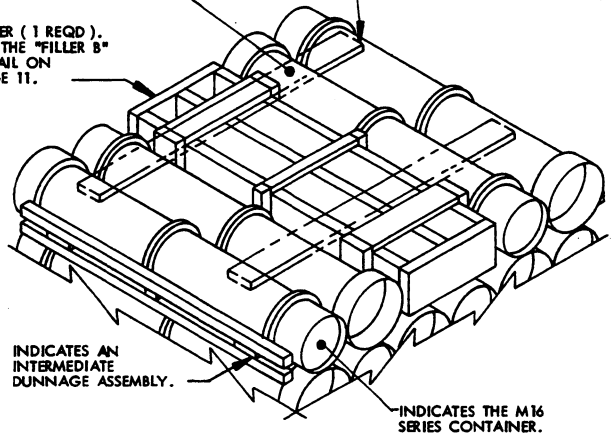
DETAIL A

THIS DETAIL DEPICTS PROCEDURES TO BE USED WHEN A STANDARD UNIT MINUS ONE CONTAINER IS TO BE UNITIZED. THIS ASSEMBLY MUST BE INSTALLED IN THE MIDDLE OF THE TOP LAYER OF THE PALLET UNIT.

INDICATES A STRAPPING
BOARD.

ALL STRAPPING HAS BEEN
OMITTED FOR CLARITY
PURPOSES.

FILLER (1 REQD).
SEE THE "FILLER B"
DETAIL ON
PAGE 11.



DETAIL B

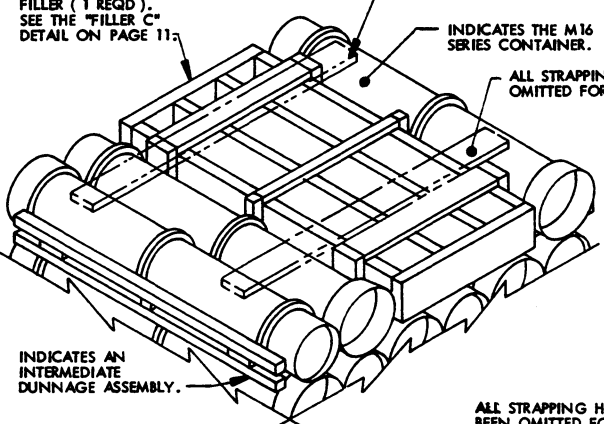
THIS DETAIL DEPICTS PROCEDURES TO BE USED WHEN A STANDARD UNIT MINUS TWO CONTAINERS IS TO BE UNITIZED. THIS ASSEMBLY MUST BE INSTALLED IN THE MIDDLE OF THE TOP LAYER OF THE PALLET UNIT.

INDICATES A STRAPPING
BOARD.

FILLER (1 REQD).
SEE THE "FILLER C"
DETAIL ON PAGE 11.

INDICATES THE M16
SERIES CONTAINER.

ALL STRAPPING HAS BEEN
OMITTED FOR CLARITY PURPOSES.



DETAIL C

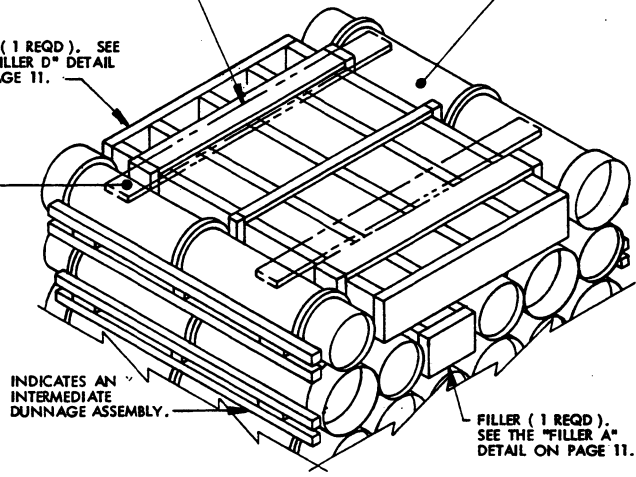
THIS DETAIL DEPICTS PROCEDURES TO BE USED WHEN A STANDARD UNIT MINUS THREE CONTAINERS IS TO BE UNITIZED. THIS ASSEMBLY MUST BE INSTALLED IN THE MIDDLE OF THE TOP LAYER OF THE PALLET UNIT.

INDICATES A STRAPPING
BOARD.

INDICATES THE M16 SERIES
CONTAINER.

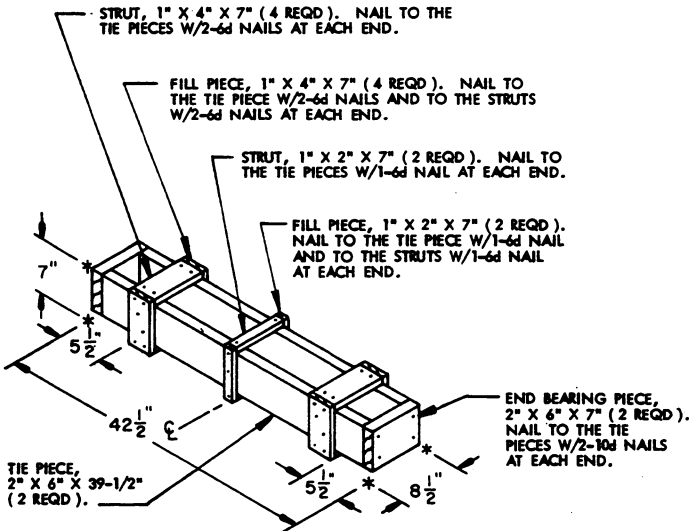
FILLER (1 REQD). SEE
THE "FILLER D" DETAIL
ON PAGE 11.

ALL STRAPPING HAS BEEN
OMITTED FOR
CLARITY PURPOSES.



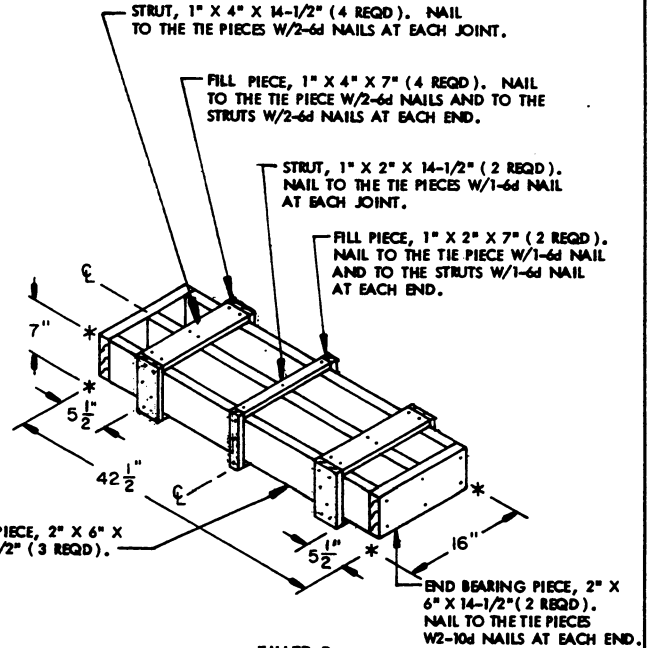
DETAIL D

THIS DETAIL DEPICTS PROCEDURES TO BE USED WHEN A STANDARD UNIT MINUS FIVE CONTAINERS IS TO BE UNITIZED. THESE ASSEMBLIES MUST BE INSTALLED IN THE MIDDLE OF THE TOP LAYER OR LAYERS OF A PALLET UNIT. WHEN SIX CONTAINERS ARE TO BE OMITTED FROM A PALLET UNIT, A COMPLETE LAYER OF CONTAINERS MUST BE OMITTED. A COMBINATION OF FILLERS MUST BE USED WHEN FIVE CONTAINERS ARE TO BE OMITTED FROM A PALLET UNIT. A COMBINATION OF FILLERS OR ONE OF THE FILLERS DEPICTED ON PAGE 11 MAY BE USED WHEN FOUR OR LESS CONTAINERS ARE TO BE OMITTED FROM A PALLET UNIT.



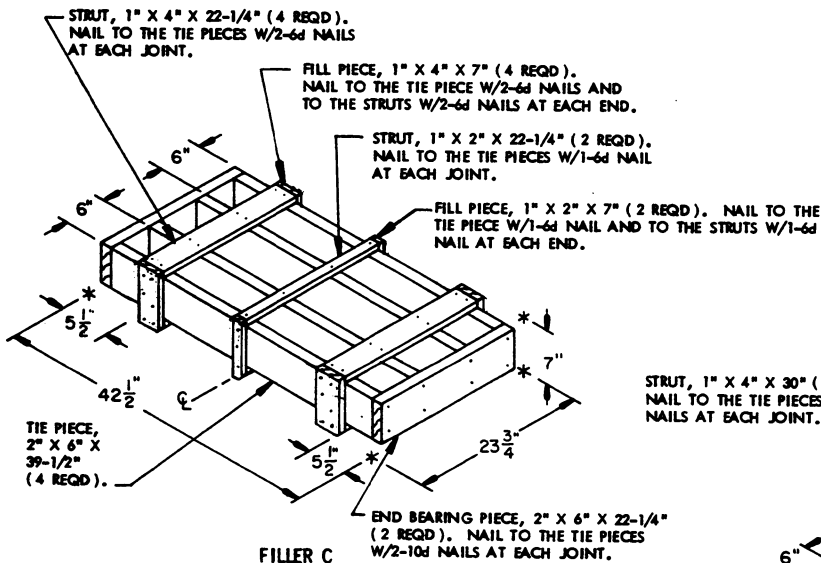
FILLER A

THIS FILLER IS TO BE USED WHEN ONE CONTAINER IS TO BE OMITTED FROM A PALLET UNIT, OR IN COMBINATION WITH OTHER FILLER ASSEMBLIES.



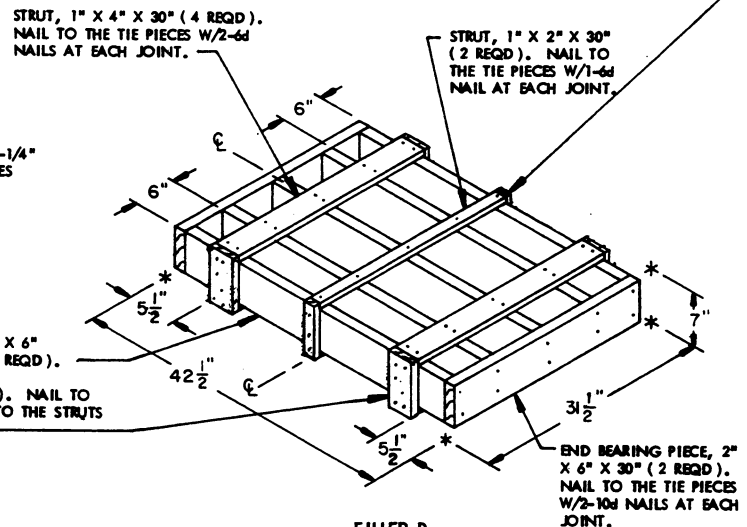
FILLER B

THIS FILLER IS TO BE USED WHEN TWO CONTAINERS ARE TO BE OMITTED FROM A PALLET UNIT, OR IN COMBINATION WITH OTHER FILLER ASSEMBLIES.



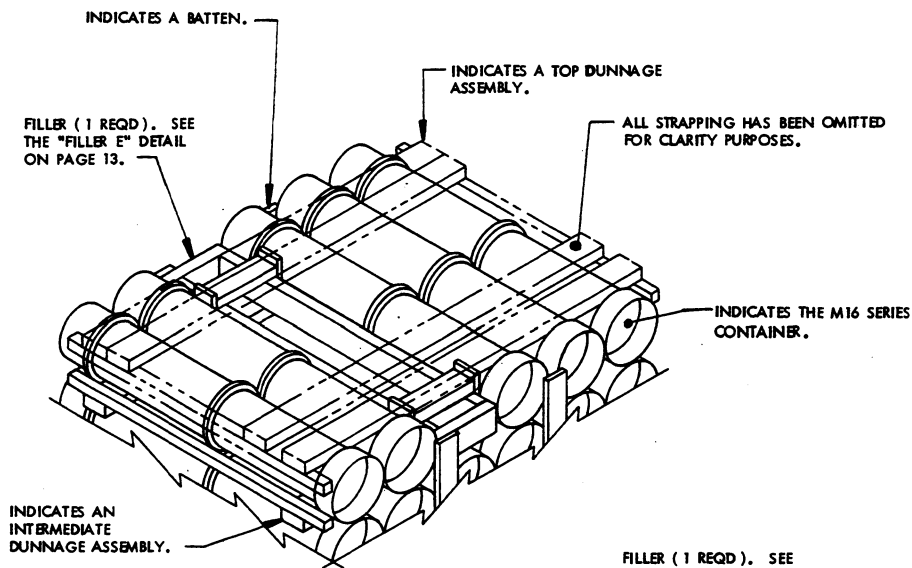
FILLER C

THIS FILLER IS TO BE USED WHEN THREE CONTAINERS ARE TO BE OMITTED FROM A PALLET UNIT, OR IN COMBINATION WITH OTHER FILLER ASSEMBLIES.



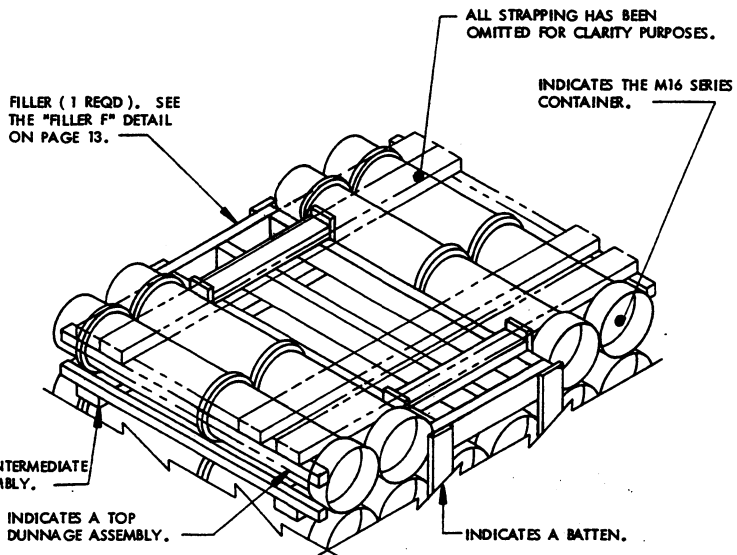
FILLER D

THIS FILLER IS TO BE USED WHEN FOUR CONTAINERS ARE TO BE OMITTED FROM A PALLET UNIT, OR IN COMBINATION WITH OTHER FILLER ASSEMBLIES.



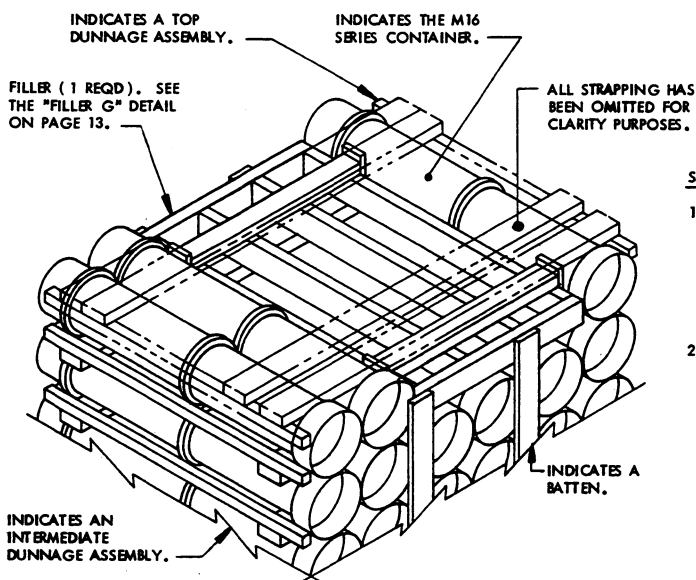
DETAIL E

THIS DETAIL DEPICTS PROCEDURES TO BE USED WHEN A STANDARD UNIT MINUS ONE CONTAINER IS TO BE UNITIZED. THIS ASSEMBLY MUST BE INSTALLED IN THE MIDDLE OF THE TOP LAYER OF THE PALLET UNIT.



DETAIL F

THIS DETAIL DEPICTS PROCEDURES TO BE USED WHEN A STANDARD UNIT MINUS TWO CONTAINERS IS TO BE UNITIZED. THIS ASSEMBLY MUST BE INSTALLED IN THE MIDDLE OF THE TOP LAYER OF THE PALLET UNIT.

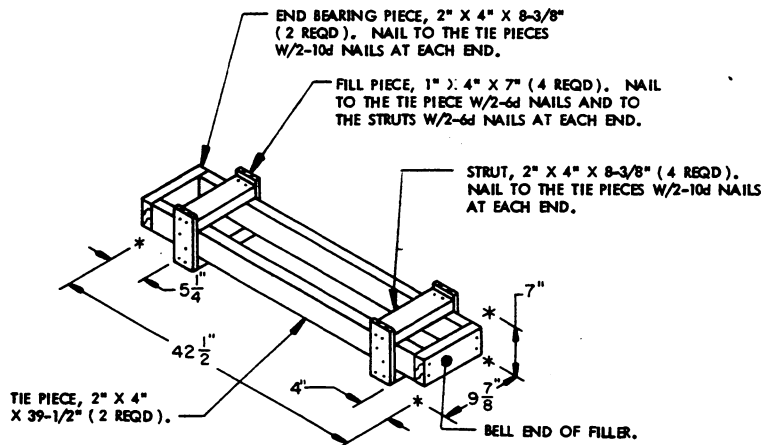


DETAIL G

THIS DETAIL DEPICTS PROCEDURES TO BE USED WHEN A STANDARD UNIT MINUS THREE CONTAINERS IS TO BE UNITIZED. THIS ASSEMBLY MUST BE INSTALLED IN THE MIDDLE OF THE TOP LAYER OF THE PALLET UNIT.

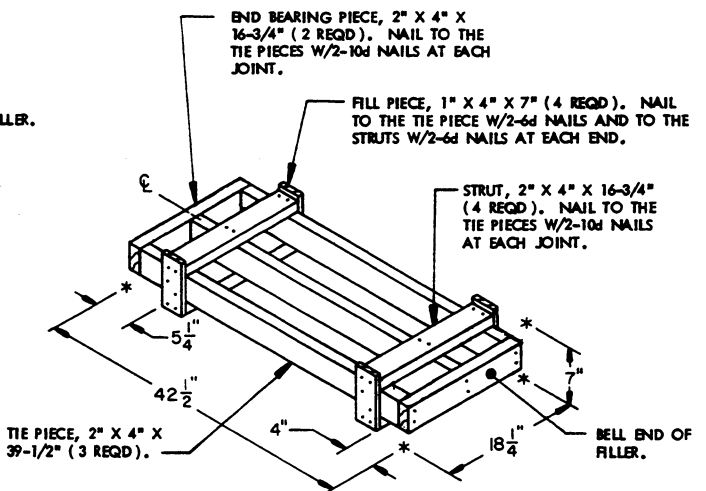
SPECIAL NOTES:

1. WHEN SIX CONTAINERS ARE TO BE OMITTED FROM A PALLET UNIT, A COMPLETE LAYER OF CONTAINERS MUST BE OMITTED. A COMBINATION OF FILLERS MUST BE USED WHEN FIVE CONTAINERS ARE TO BE OMITTED FROM A PALLET UNIT. A COMBINATION OF FILLERS OR ONE OF THE FILLERS DEPICTED ON PAGE 13 MAY BE USED WHEN FOUR OR LESS CONTAINERS ARE TO BE OMITTED FROM A PALLET UNIT. ALL FILLERS MUST BE INSTALLED IN THE MIDDLE OF THE TOP LAYER OR LAYERS OF A PALLET UNIT.
2. WHEN USING FILLER ASSEMBLIES FOR OMITTED CONTAINERS IN A PALLET UNIT, THE LENGTH OF THE BATTENS MUST BE ADJUSTED SO THAT TIGHTENING OF THE TIEDOWN STRAPS DOES NOT DAMAGE (I.E., BREAK OR SPLIT) THE ENDS OF THE BATTENS.



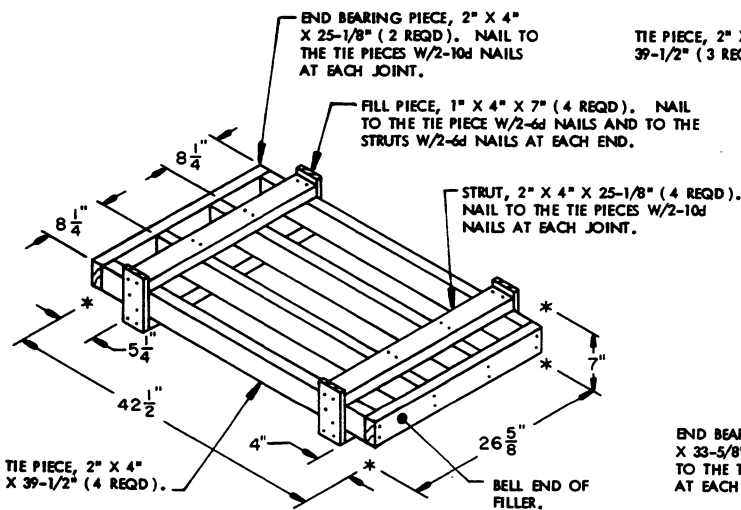
FILLER E

THIS FILLER IS TO BE USED WHEN ONE CONTAINER IS TO BE OMITTED FROM A PALLET UNIT, OR IN COMBINATION WITH OTHER FILLER ASSEMBLIES.



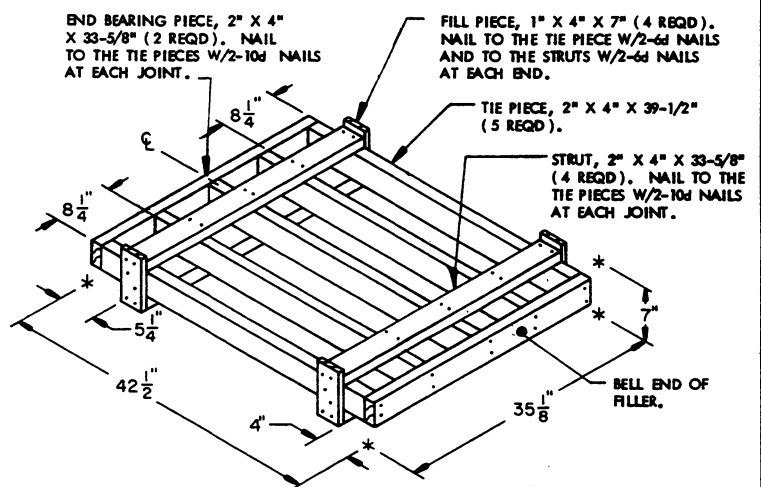
FILLER F

THIS FILLER IS TO BE USED WHEN TWO CONTAINERS ARE TO BE OMITTED FROM A PALLET UNIT, OR IN COMBINATION WITH OTHER FILLER ASSEMBLIES.



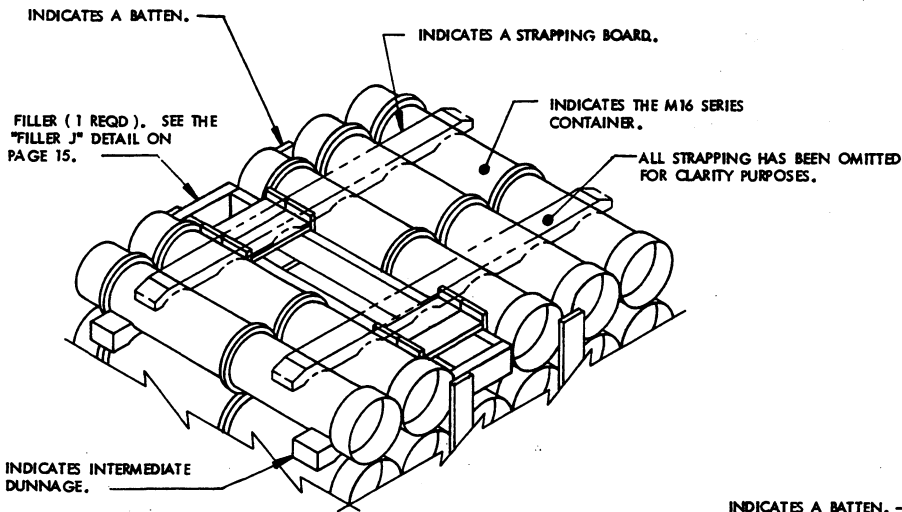
FILLER G

THIS FILLER IS TO BE USED WHEN THREE CONTAINERS ARE TO BE OMITTED FROM A PALLET UNIT, OR IN COMBINATION WITH OTHER FILLER ASSEMBLIES.



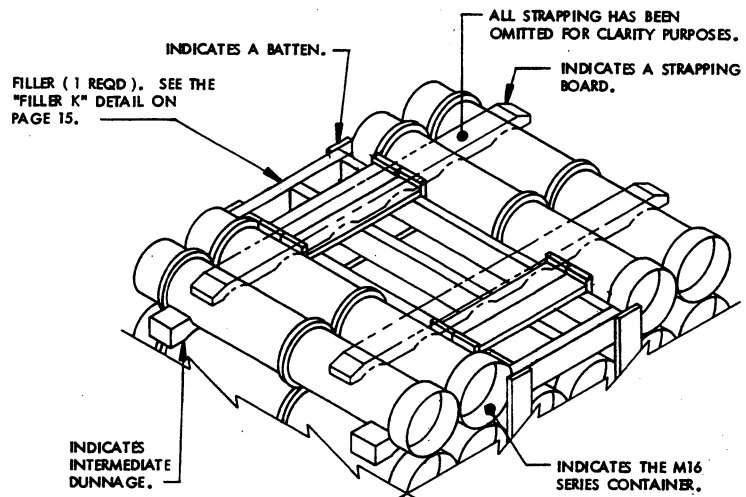
FILLER H

THIS FILLER IS TO BE USED WHEN FOUR CONTAINERS ARE TO BE OMITTED FROM A PALLET UNIT, OR IN COMBINATION WITH OTHER FILLER ASSEMBLIES.



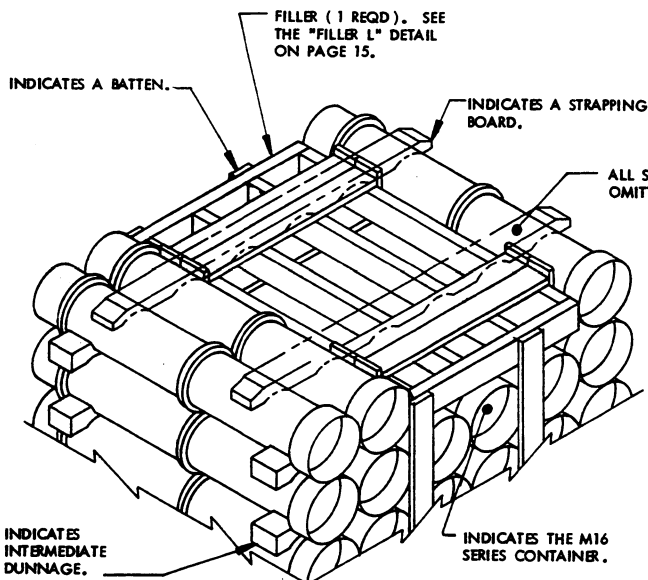
DETAIL H

THIS DETAIL DEPICTS PROCEDURES TO BE USED WHEN A STANDARD UNIT MINUS ONE CONTAINER IS TO BE UNITIZED. THIS ASSEMBLY MUST BE INSTALLED IN THE MIDDLE OF THE TOP LAYER OF THE PALLET UNIT.



DETAIL J

THIS DETAIL DEPICTS PROCEDURES TO BE USED WHEN A STANDARD UNIT MINUS TWO CONTAINERS IS TO BE UNITIZED. THIS ASSEMBLY MUST BE INSTALLED IN THE MIDDLE OF THE TOP LAYER OF THE PALLET.

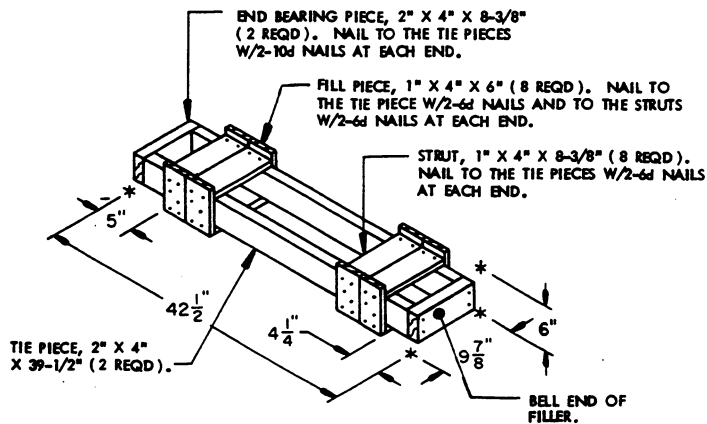


DETAIL K

THIS DETAIL DEPICTS PROCEDURES TO BE USED WHEN A STANDARD UNIT MINUS THREE CONTAINERS IS TO BE UNITIZED. THIS ASSEMBLY MUST BE INSTALLED IN THE MIDDLE OF THE TOP LAYER OF THE PALLET UNIT.

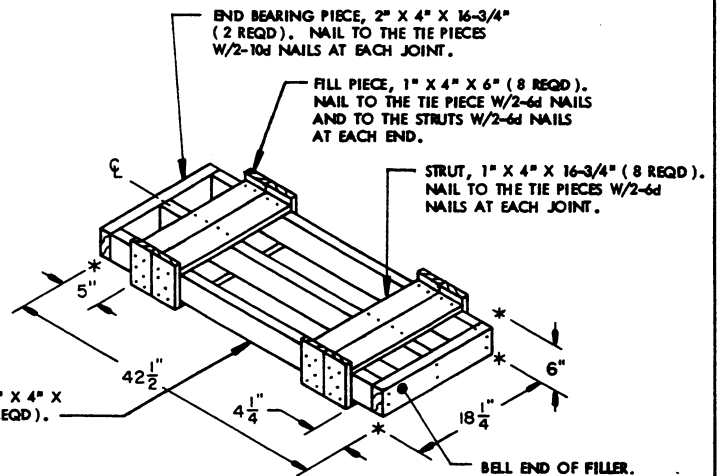
SPECIAL NOTES:

1. WHEN SIX CONTAINERS ARE TO BE OMITTED FROM A PALLET UNIT, A COMPLETE LAYER OF CONTAINERS MUST BE OMITTED. A COMBINATION OF FILLERS MUST BE USED WHEN FIVE CONTAINERS ARE TO BE OMITTED FROM A PALLET UNIT. A COMBINATION OF FILLERS OR ONE OF THE FILLERS DEPICTED ON PAGE 15 MAY BE USED WHEN FOUR OR LESS CONTAINERS ARE TO BE OMITTED FROM A PALLET UNIT. ALL FILLERS MUST BE INSTALLED IN THE MIDDLE OF THE TOP LAYER OR LAYERS OF A PALLET UNIT.
2. WHEN USING FILLER ASSEMBLIES FOR OMITTED CONTAINERS IN A PALLET UNIT, THE LENGTH OF THE BATTENS MUST BE ADJUSTED SO THAT TIGHTENING OF THE TIEDOWN STRAPS DOES NOT DAMAGE (I.E., BREAK OR SPLIT) THE ENDS OF THE BATTENS.



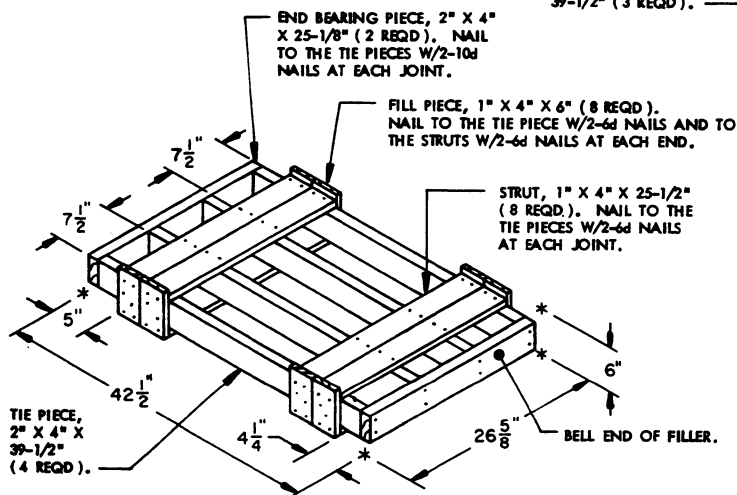
FILLER J

THIS FILLER IS TO BE USED WHEN ONE CONTAINER IS TO BE OMITTED FROM A PALLET UNIT, OR IN COMBINATION WITH OTHER FILLER ASSEMBLIES.



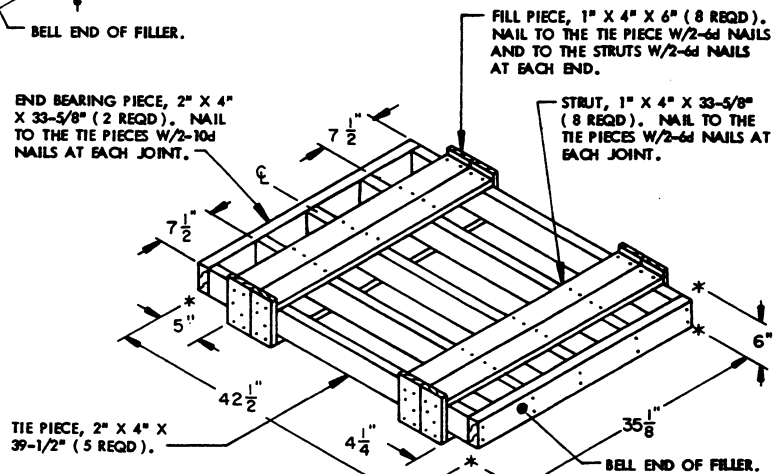
FILLER K

THIS FILLER IS TO BE USED WHEN TWO CONTAINERS ARE TO BE OMITTED FROM A PALLET UNIT, OR IN COMBINATION WITH OTHER FILLER ASSEMBLIES.



FILLER L

THIS FILLER IS TO BE USED WHEN THREE CONTAINERS ARE TO BE OMITTED FROM A PALLET UNIT, OR IN COMBINATION WITH OTHER FILLER ASSEMBLIES.



FILLER M

THIS FILLER IS TO BE USED WHEN FOUR CONTAINERS ARE TO BE OMITTED FROM A PALLET UNIT, OR IN COMBINATION WITH OTHER FILLER ASSEMBLIES.

