

APPENDIX 3

UNITIZING PROCEDURES FOR PROPELLING CHARGES PACKED IN CYLINDRICAL METAL CONTAINERS ON 4-WAY ENTRY PALLETS

M14 SERIES CONTAINERS

INDEX

<u>ITEM</u>	<u>PAGE (S)</u>
GENERAL NOTES	2
UNIT A (ALTERNATED CONTAINERS)	4, 5
UNIT B (FLAT DUNNAGE)	6, 7
UNIT C (ROUTED DUNNAGE)	8, 9
FILLERS AND INSTALLATION PROCEDURES FOR OMITTED CONTAINERS:	
UNIT A (ALTERNATED CONTAINERS)	10, 11
UNIT B (FLAT DUNNAGE)	12, 13
UNIT C (ROUTED DUNNAGE)	14, 15

PALLET UNIT DATA						
ITEMS INCLUDED		HAZARD CLASSIFICATION ①				WEIGHT (LBS)
NSN	DODIC	DOT CLASS	CG CLASS	QD CLASS	COMP GROUP	
1320-00-028-4873	D540	B	II-A	1.3	C	1,304
028-4876	D540	B	II-A	1.3	C	TO
935-1922	D540	B	II-A	1.3	C	1,435

NOTICE: THIS APPENDIX CANNOT STAND ALONE BUT MUST BE USED IN CONJUNCTION WITH THE BASIC UNITIZATION PROCEDURES DRAWING 19-48-4042-20PM1001.

THIS DRAWING SUPERSEDES PART OF DRAWING 19-48-4042-1-2-5-11-14PM1000, DATED FEBRUARY 1965, AND REVISION 1, THERETO, DATED 29 AUGUST 1969.

① HAZARD CLASSIFICATION DATA CONTAINED IN THE ABOVE CHART IS FOR GUIDANCE AND INFORMATIONAL PURPOSES ONLY. VERIFICATION OF THE SPECIFIED DATA SHOULD BE MADE BY CONSULTING THE MOST RECENT JOINT HAZARD CLASSIFICATION SYSTEM LISTING OR OTHER APPROVED LISTING (S).

DO NOT SCALE

REVISIONS				REVISIONS	FIELD NO.	DATE
1	JUN 66	WIRE	William F. Enright	REVISIONS	WRF/MS	1966
2	AUG 68	WIRE	William F. Enright	REVISIONS	WRF/MS	1968
				APPROVED BY ORDER OF COMMANDING GENERAL, U. S. ARMY MATERIEL DEVELOPMENT AND READINESS COMMAND (DARCOM) <i>John A. Boyd</i> U. S. ARMY DARCOM DRAWING OCTOBER 1979		
				CLASS	DIVISION	DRAWING
				19	48	4042A/ 3
						20PM 1001

GENERAL NOTES

- A. THIS APPENDIX CANNOT STAND ALONE BUT MUST BE USED IN CONJUNCTION WITH THE BASIC UNITIZING PROCEDURES DRAWING 19-48-4042-20PM1001. TO PRODUCE AN APPROVED UNIT LOAD, ALL PERTINENT PROCEDURES, SPECIFICATIONS AND CRITERIA SET FORTH WITHIN THE BASIC DRAWING WILL APPLY TO THE PROCEDURES DELINEATED IN THIS APPENDIX. ANY EXCEPTIONS TO THE BASIC PROCEDURES ARE SPECIFIED IN THIS APPENDIX.
- B. DIMENSIONS, CUBE, AND WEIGHT OF A PALLET UNIT WILL VARY SLIGHTLY DEPENDING UPON THE ACTUAL DIMENSIONS OF THE CONTAINER, WEIGHT OF THE SPECIFIC ITEM, AND METHOD OF UNITIZATION.
- C. OUTLOADING AND STORAGE OF THE ITEMS COVERED BY THIS APPENDIX SHALL BE ACCOMPLISHED IN ACCORDANCE WITH AWC (DARCOM) DRAWINGS IDENTIFIED WITHIN DA PAMPHLET 75-3.
- D. FOR METHOD OF SECURING A STRAP CUTTER TO THE PALLET UNIT, SEE DARCOM DRAWING 19-48-4127-20P1000.
- E. IF ITEMS COVERED HEREIN ARE UNITIZED PRIOR TO ISSUANCE OF THIS APPENDIX, THE CONTAINERS NEED NOT BE REUNITIZED SOLELY TO CONFORM TO THIS APPENDIX.
- F. THE UNITIZATION PROCEDURES DEPICTED HEREIN MAY ALSO BE USED FOR UNITIZING PROPELLING CHARGES WHEN IDENTIFIED BY A DIFFERENT NATIONAL STOCK NUMBER (NSN) THAN THOSE SHOWN ON THE COVER PAGE, PROVIDED THE ITEM IS PACKED IN THE M14 SERIES CONTAINER. THE EXPLOSIVE CLASSIFICATION OF OTHER ITEMS MAY BE DIFFERENT THAN THOSE SHOWN.
- G. FOR DETAILS OF THE M14 SERIES CONTAINER, SEE PICATINNY ARSENAL DRAWING NO. 888020:
- CONTAINER DIMENSIONS — 37-1/2" LONG BY 6-11/16" DIAMETER.
CONTAINER CUBE ————— 1.0 CUBIC FOOT.
CONTAINER WEIGHT
(WITH CHARGE) ——— 28.5 POUNDS (APPROX).
- H. THE SPECIFIED UNITIZING PROCEDURES SHOWN HEREIN DEPICTS THREE DIFFERENT METHODS FOR UNITIZING THE M14 SERIES CONTAINERS:
1. UNIT "A" DEPICTS CONTAINERS UNITIZED ON FLAT DUNNAGE WITH EVERY OTHER CONTAINER ALTERNATED (BASE END, BELL END, BASE END) INDIVIDUALLY AND BY LAYERS. SEE DETAILS ON PAGES 4 AND 5.
 2. UNIT "B" DEPICTS CONTAINERS UNITIZED ON FLAT DUNNAGE. SEE DETAILS ON PAGES 6 AND 7.
 3. UNIT "C" DEPICTS CONTAINERS UNITIZED ON ROUTED DUNNAGE. SEE DETAILS ON PAGES 8 AND 9.
- ALTHOUGH UNIT "A" DEPICTS THE PREFERRED METHOD OF UNITIZING THE M14 SERIES CONTAINERS, ALL THREE METHODS ARE APPROVED FOR USE.
- J. IF DEEMED MORE ECONOMICAL FOR SHIPPING AND STORAGE BY THE RESPONSIBLE COMMAND, THE UNITS DEPICTED IN THE FOLLOWING PAGES MAY HAVE ONE COMPLETE LAYER OF CONTAINERS EITHER ADDED OR DELETED, WHICHEVER IS APPLICABLE. FOR FURTHER UNITIZATION GUIDANCE, SEE SPECIAL NOTE 1 ON PAGES 4, 6, AND 8.
- K. THE STYLE 1 AND 1A PALLETS DELINEATED IN THE DETAILS ON PAGES 4 THRU 9 NEED NOT HAVE CHAMFERS OR STRAP SLOTS AS SPECIFIED WITHIN MILITARY SPECIFICATION MIL-P-15011 WHEN USED FOR THE UNITIZATION OF THE ITEMS COVERED BY THIS APPENDIX.

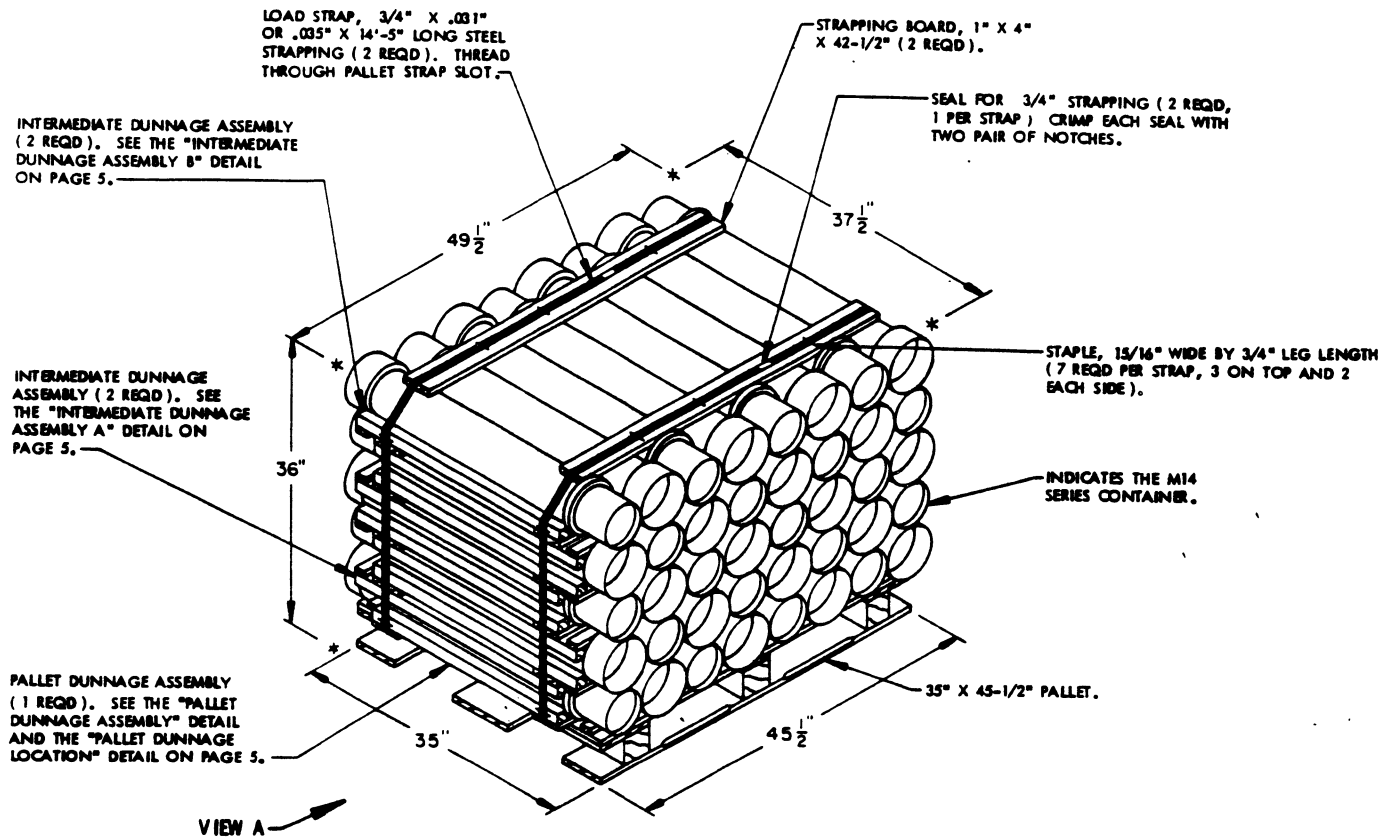
REVISIONS

REVISION NO. 1, DATED JUNE 1986, CONSISTS OF:
CHANGING 1-1/4" STRAPPING TO 3/4" STRAPPING:

REVISION NO. 2, DATED AUGUST 1988, CONSISTS OF:

ADDING ITEM BY NATIONAL STOCK NUMBER TO THE "PALLET UNIT DATA" CHART.

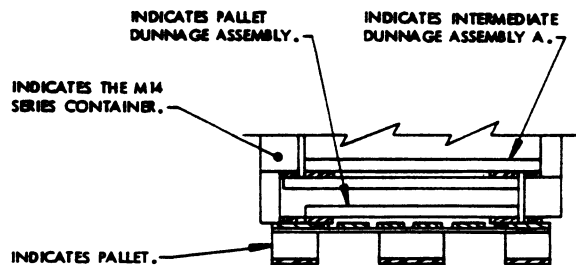
THIS PAGE INTENTIONALLY LEFT BLANK.



ISOMETRIC VIEW

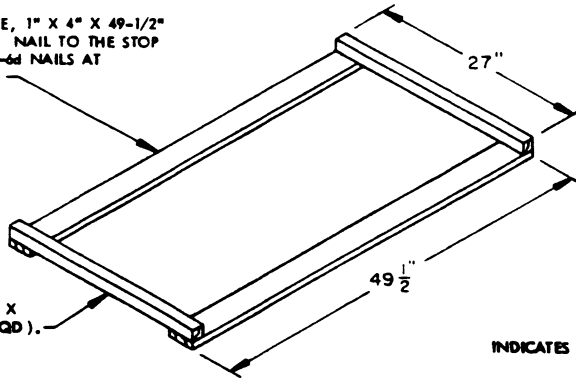
SPECIAL NOTE:

1. THE UNIT DEPICTED ABOVE MAY BE INCREASED BY ONE COMPLETE LAYER OF CONTAINERS BY THE ADDITION OF ONE MORE INTERMEDIATE DUNNAGE ASSEMBLY AND EIGHT MORE CONTAINERS, AND BY INCREASING STRAP LENGTHS APPROPRIATELY. THIS WILL RESULT IN AN OVERALL UNIT HEIGHT OF 41-15/16".



PARTIAL VIEW A

CROSS PIECE, 1" X 4" X 49-1/2"
(2 REQD). NAIL TO THE STOP
PIECES W/2-6d NAILS AT
EACH END.

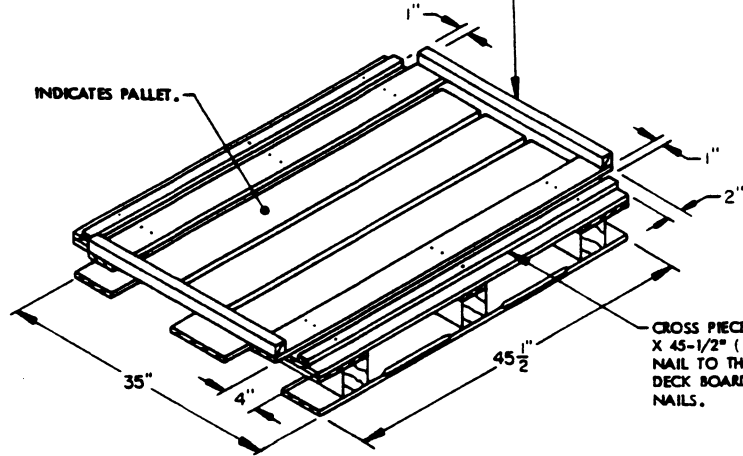


STOP PIECE, 2" X
2" X 27" (2 REQD).

PALLET DUNNAGE ASSEMBLY

(1 REQD)

PALLET DUNNAGE ASSEMBLY. NAIL
EACH CROSS PIECE TO THE PALLET
DECK BOARDS W/6-6d NAILS. DO
NOT NAIL THRU THE STRAP SLOTS
OF THE PALLET.



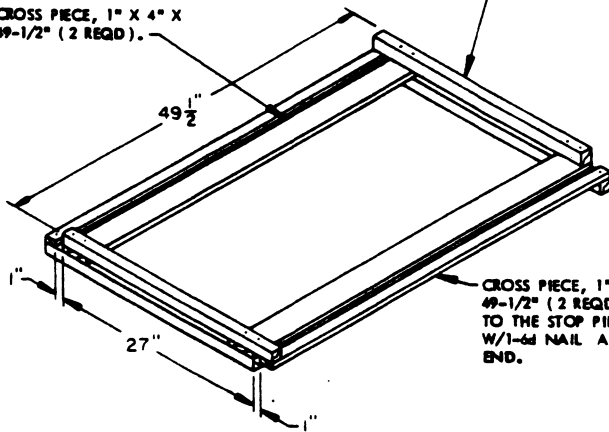
INDICATES PALLET.

CROSS PIECE, 1" X 2"
X 45-1/2" (2 REQD).
NAIL TO THE PALLET
DECK BOARD W/3-6d
NAILS.

PALLET DUNNAGE LOCATION

STOP PIECE, 2" X 2" X 29-1/2"
(4 REQD). NAIL THRU THE STOP
PIECE INTO THE CROSS PIECE
W/2-10d NAILS AT EACH JOINT.

CROSS PIECE, 1" X 4" X
49-1/2" (2 REQD).

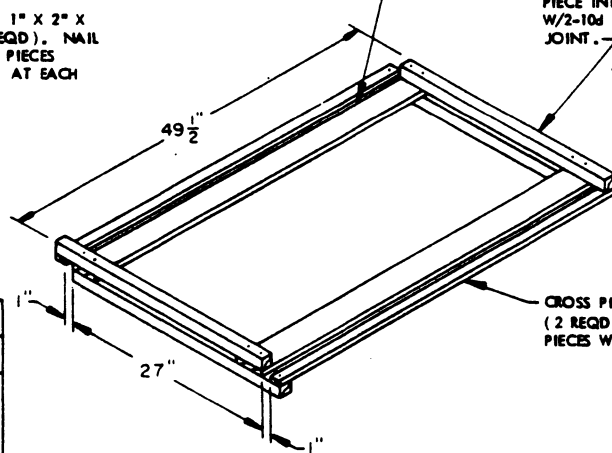


INTERMEDIATE DUNNAGE ASSEMBLY A

(2 REQD)

CROSS PIECE, 1" X 4" X 49-1/2"
(2 REQD).

STOP PIECE, 2" X 2" X 29-1/2"
(4 REQD). NAIL THRU THE STOP
PIECE INTO THE CROSS PIECE
W/2-10d NAILS AT EACH
JOINT.



CROSS PIECE, 1" X 2" X 49-1/2"
(2 REQD). NAIL TO THE STOP
PIECES W/1-6d NAIL AT EACH
END.

INTERMEDIATE DUNNAGE ASSEMBLY B

(2 REQD)

BILL OF MATERIAL

LUMBER	NO. REQD	LINEAR FEET	BOARD FEET
1" X 2" X 45-1/2"	2	7.50	1.26
1" X 2" X 49-1/2"	8	33.00	5.50
1" X 4" X 42-1/2"	2	7.00	2.36
1" X 4" X 49-1/2"	10	41.25	13.75
2" X 2" X 27"	2	4.50	1.50
2" X 2" X 29-1/2"	16	39.33	13.11
NAILS		NO. REQD	POUNDS
6d (2")	42	0.25	
10d (3")	64	0.98	
PALLET, 35" X 45-1/2"	1 REQD	65 LBS	
STEEL STRAPPING, 3/4" X .031" OR .035" - 28.83'	2 REQD	2.06 LBS	
SEAL FOR 3/4" STRAP	2 REQD	NIL	
STAPLE, 15/16" X 3/4"	14 REQD	NIL	

UNIT DATA

CUBE	38.7 CUBIC FEET (APPROX)	WEIGHT	1,160 LBS (APPROX)
CONTAINER, M14 SERIES	40 EACH @ 29 LBS	DUNNAGE	79 LBS
PALLET			65 LBS

TOTAL WEIGHT 1,304 LBS (APPROX)

RISER, 1" X 4" X 41"
(1 REQD). NAIL TO
THE BATTENS W/2-8d
NAILS AT EACH JOINT.

SEAL FOR 3/4" STRAPPING
(4 REQD, 1 PER STRAP). CRIMP
EACH SEAL WITH TWO PAIR
OF NOTCHES.

STRAPPING BOARD, 2" X 4" X
41-1/2" (2 REQD).

LOAD STRAP, 3/4" X .031" OR .035"
X 16'-4" LONG STEEL STRAPPING (2 REQD).
THREAD THROUGH PALLET STRAP SLOT.

INTERMEDIATE DUNNAGE
ASSEMBLY (5 REQD). SEE
THE "INTERMEDIATE DUNNAGE
ASSEMBLY" DETAIL ON
PAGE 7.

PALLET DUNNAGE ASSEMBLY
(1 REQD). SEE THE "PALLET
DUNNAGE ASSEMBLY" DETAIL
AND THE "PALLET DUNNAGE
LOCATION" DETAIL ON
PAGE 7.

INDICATES THE M14 SERIES CONTAINER.

STAPLE, 15/16" WIDE BY 3/4" LEG
LENGTH (26 REQD, 6 PER TIEDOWN
STRAP AND 7 PER LOAD STRAP).

40" X 48" PALLET.

BATTEN, 2" X 4" X 40-1/4"
(4 REQD).

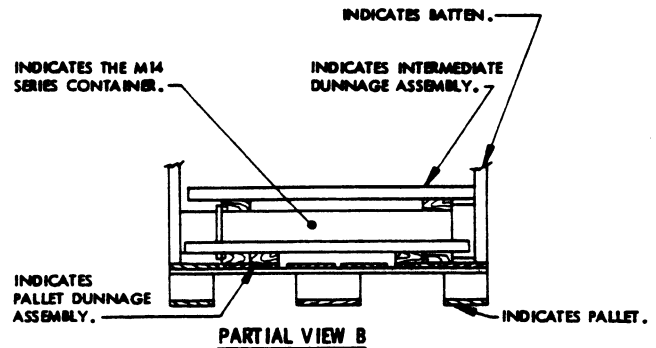
TIEDOWN STRAP, 3/4" X .031" OR .035"
X 14'-10" LONG STEEL STRAPPING (2 REQD).

VIEW B

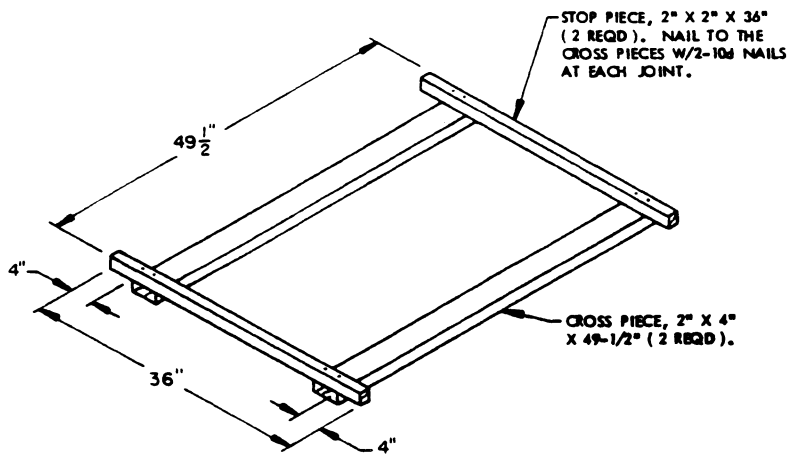
ISOMETRIC VIEW

SPECIAL NOTES:

1. THE UNIT DEPICTED ABOVE MAY BE REDUCED BY ONE COMPLETE LAYER OF CONTAINERS BY THE DELETION OF ONE INTERMEDIATE DUNNAGE ASSEMBLY AND SEVEN CONTAINERS, AND BY DECREASING STRAP LENGTHS APPROPRIATELY. THIS WILL RESULT IN AN OVERALL UNIT HEIGHT OF 40-7/16".
2. IF DESIRED, A 2" X 6" PIECE CAN BE SUBSTITUTED FOR EACH SET OF TWO (SIDE BY SIDE) 2" X 4" PIECES ON THE PALLET DUNNAGE ASSEMBLY. EACH 2" X 6" PIECE WILL BE NAILED TO THE PALLET W/6-8d NAILS.



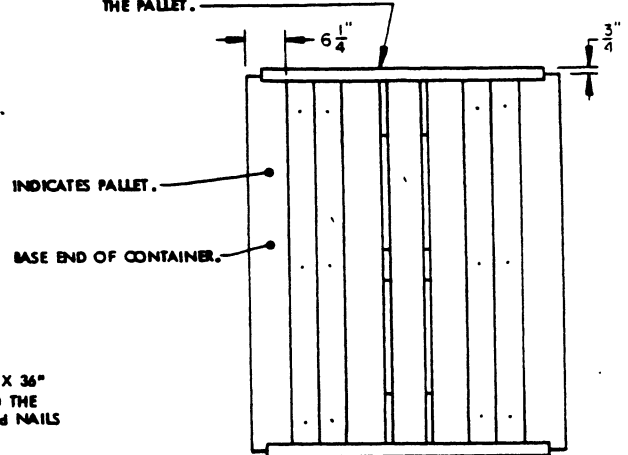
PARTIAL VIEW B



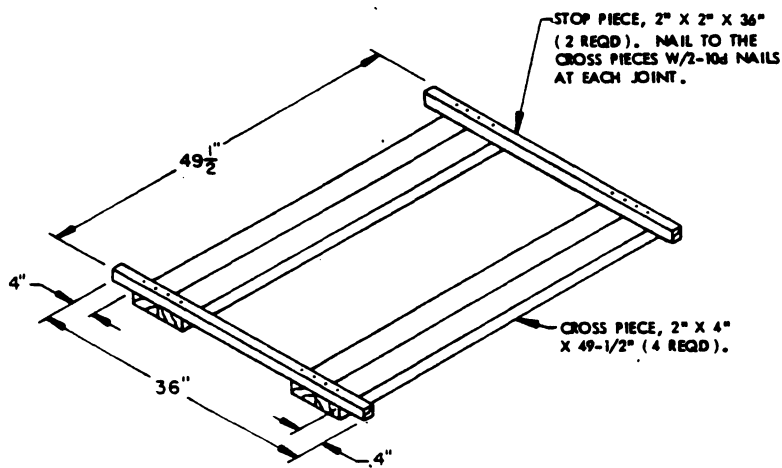
INTERMEDIATE DUNNAGE ASSEMBLY

(5 REQD)

PALLET DUNNAGE ASSEMBLY. NAIL
EACH CROSS PIECE TO THE PALLET
DECK BOARDS W/3-8d NAILS. DO
NOT NAIL THRU THE STRAP SLOTS OF
THE PALLET.



PLAN VIEW



PALLET DUNNAGE ASSEMBLY

(1 REQD)

INDICATES PALLET
DUNNAGE ASSEMBLY.



ELEVATION VIEW

PALLET DUNNAGE LOCATION

BILL OF MATERIAL

LUMBER	NO. REQD	LINEAR FEET	BOARD FEET
1" X 4" X 41"	1	3.42	1.14
2" X 2" X 36"	12	36.00	12.00
2" X 4" X 40-1/4"	4	13.42	8.94
2" X 4" X 41-1/2"	2	6.92	4.61
2" X 4" X 49-1/2"	14	57.75	38.50
NAILS		NO. REQD	POUNDS
8d (2-1/2")	16		0.17
10d (3")	56		0.86
PALLET, 40" X 48"	1	REQD	80 LBS
STEEL STRAPPING, 3/4" X .031" OR .035"	62.33	REQD	4.45 LBS
SEAL FOR 3/4" STRAPPING	4	REQD	NIL
STAPLE, 15/16" X 3/4"	26	REQD	NIL

UNIT DATA

CUBE	54.7 CUBIC FEET (APPROX)	WEIGHT	
CONTAINER, M14 SERIES	42 EA @ 29 LBS		1,218 LBS (APPROX)
DUNNAGE			135 LBS
PALLET			80 LBS
TOTAL WEIGHT			1,433 LBS (APPROX)

RISER, 1" X 4" X 41" (1 REQD).
NAIL TO THE BATTENS W/2-8d
NAILS AT EACH JOINT.

SEAL FOR 3/4" STRAPPING (4 REQD, 1 PER STRAP). CRIMP EACH
SEAL WITH TWO PAIR OF NOTCHES.

STRAPPING BOARD (2 REQD). SEE
THE "STRAPPING BOARD" DETAIL ON
PAGE 9.

LOAD STRAP, 3/4" X .031" OR
.035" X 16'-0" LONG STEEL
STRAPPING (2 REQD). THREAD
THROUGH PALLET STRAP SLOT.

STAPLE, 15/16" WIDE BY 3/4" LEG
LENGTH (18 REQD, 6 PER TIEDOWN
STRAP AND 3 PER LOAD STRAP).

INTERMEDIATE DUNNAGE (10 REQD).
SEE THE "INTERMEDIATE DUNNAGE"
DETAIL ON PAGE 9.

INDICATES THE M14 SERIES
CONTAINER.

BATTEN, 2" X 4" X 40"
(4 REQD).

PALLET DUNNAGE (4 REQD).
SEE THE "PALLET DUNNAGE"
DETAIL AND "PALLET DUNNAGE
LOCATION" DETAIL ON PAGE 9.

40" X 48" PALLET.

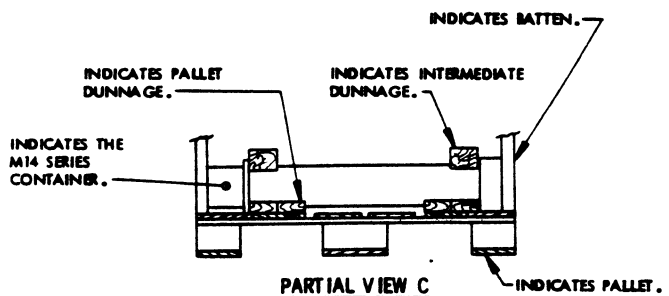
TIEDOWN STRAP, 3/4" X .031" OR .035"
X 14'-9" LONG STEEL STRAPPING (2 REQD).

VIEW C

ISOMETRIC VIEW

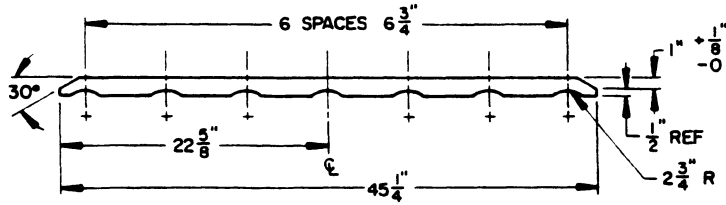
SPECIAL NOTES:

1. THE UNIT DEPICTED ABOVE MAY BE REDUCED BY ONE COMPLETE LAYER OF CONTAINERS BY THE DELETION OF TWO INTERMEDIATE DUNNAGE PIECES AND SEVEN CONTAINERS AND BY DECREASING STRAP LENGTHS APPROPRIATELY. THIS WILL RESULT IN AN OVERALL UNIT HEIGHT OF 40-1/4".
2. IF DESIRED, A 2" X 6" PIECE CAN BE SUBSTITUTED FOR EACH SET OF TWO (SIDE BY SIDE) 2" X 4" PIECES OF PALLET DUNNAGE. EACH 2" X 6" PIECE WILL BE NAILED TO THE PALLET W/6-8d NAILS.

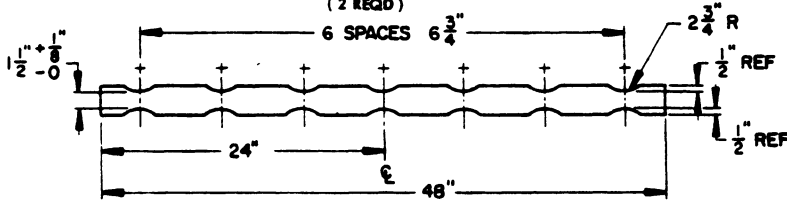


PARTIAL VIEW C

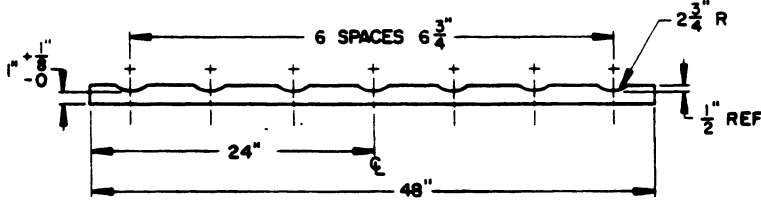
UNIT C (ROUTED DUNNAGE)



STRAPPING BOARD
2" X 4" MATERIAL
(2 REQD)

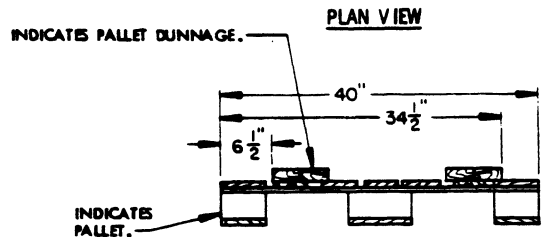
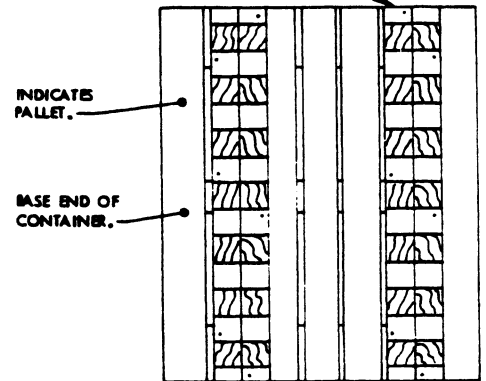


INTERMEDIATE DUNNAGE
3" X 4" MATERIAL
(10 REQD)



PALLET DUNNAGE
2" X 4" MATERIAL
(4 REQD)

PALLET DUNNAGE (4 REQD). NAIL EACH PIECE TO THE PALLET DECK BOARDS W/3-8d NAILS. DO NOT NAIL THRU THE STRAP SLOTS OF THE PALLET.



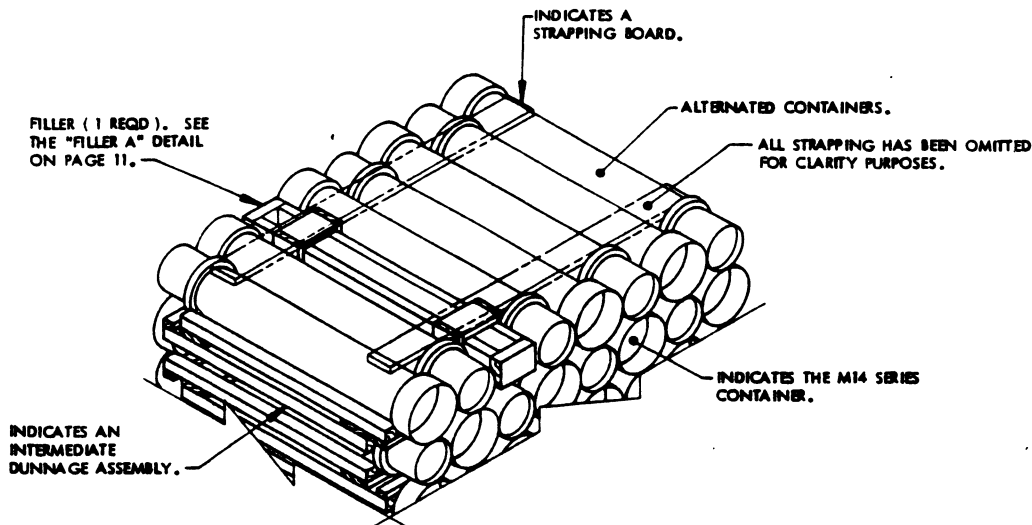
ELEVATION VIEW
PALLET DUNNAGE LOCATION

BILL OF MATERIAL			
LUMBER	NO. REQD	LINEAR FEET	BOARD FEET
1" X 4" X 41"	1	3.42	1.14
2" X 4" X 40"	4	13.33	8.89
2" X 4" X 45-1/4"	2	7.54	5.03
2" X 4" X 48"	4	16.00	10.67
3" X 4" X 48"	10	40.00	40.00
NAILS		NO. REQD	POUNDS
8d (2-1/2")		16	0.17
PALLET, 40" X 48"		1 REQD	80 LBS
STEEL STRAPPING, 3/4" X .031" OR .035"		61.50' REQD	4.39 LBS
SEAL FOR 3/4" STRAPPING		4 REQD	NIL
STAPLE, 15/32" X 3/4"		18 REQD	NIL

UNIT DATA

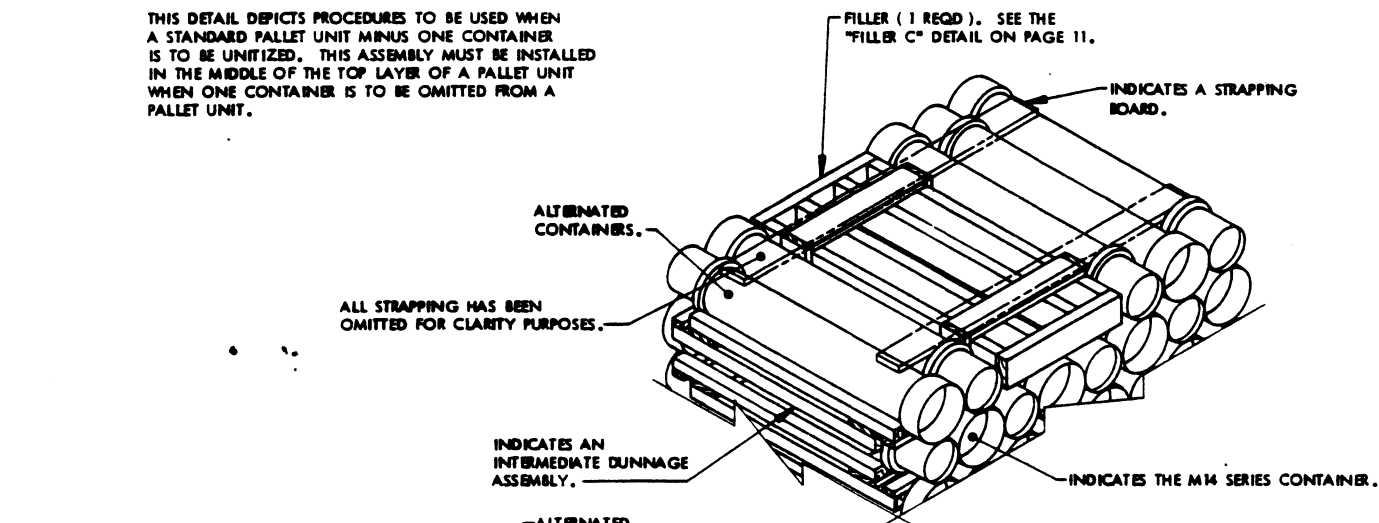
CUBE	52.9 CUBIC FEET	WEIGHT	
CONTAINER, M14 SERIES	42 EA @ 29 LBS		1,218 LBS (APPROX)
DUNNAGE			137 LBS
PALLET			80 LBS

TOTAL WEIGHT ----- 1,435 LBS (APPROX)



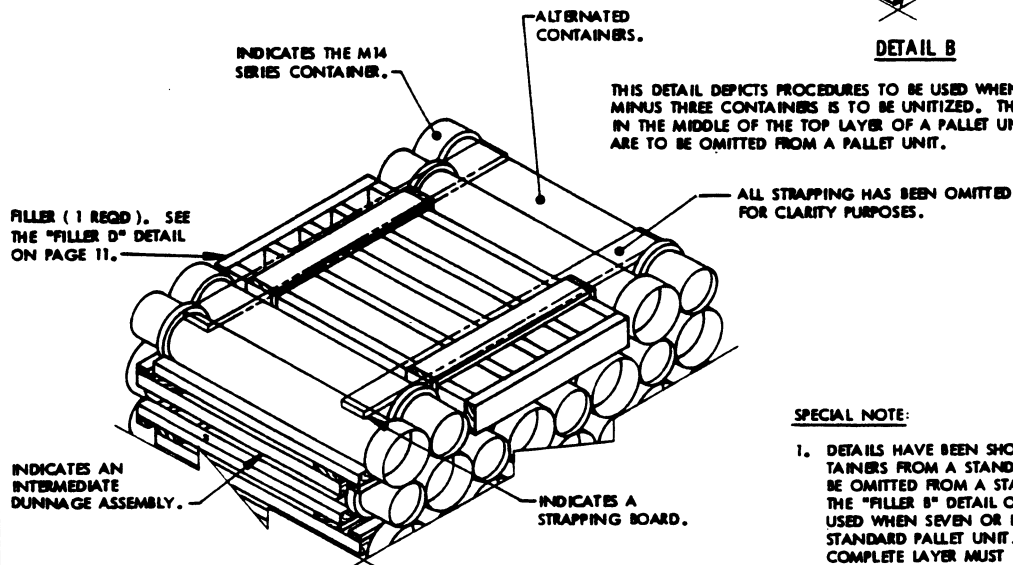
DETAIL A

THIS DETAIL DEPICTS PROCEDURES TO BE USED WHEN A STANDARD PALLET UNIT MINUS ONE CONTAINER IS TO BE UNITIZED. THIS ASSEMBLY MUST BE INSTALLED IN THE MIDDLE OF THE TOP LAYER OF A PALLET UNIT WHEN ONE CONTAINER IS TO BE OMITTED FROM A PALLET UNIT.



DETAIL B

THIS DETAIL DEPICTS PROCEDURES TO BE USED WHEN A STANDARD PALLET UNIT MINUS THREE CONTAINERS IS TO BE UNITIZED. THIS ASSEMBLY MUST BE INSTALLED IN THE MIDDLE OF THE TOP LAYER OF A PALLET UNIT WHEN THREE CONTAINERS ARE TO BE OMITTED FROM A PALLET UNIT.



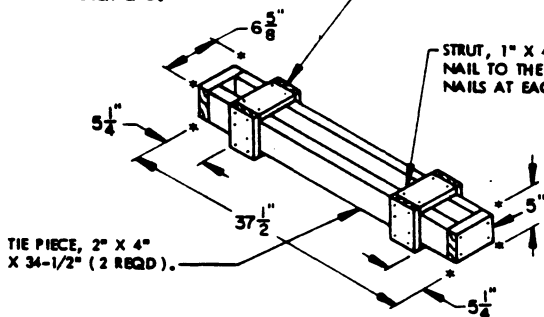
DETAIL C

THIS DETAIL DEPICTS PROCEDURES TO BE USED WHEN A STANDARD PALLET UNIT MINUS FOUR CONTAINERS IS TO BE UNITIZED. THIS ASSEMBLY MUST BE INSTALLED IN THE MIDDLE OF THE TOP LAYER OF A PALLET UNIT WHEN FOUR CONTAINERS ARE TO BE OMITTED FROM A PALLET UNIT.

SPECIAL NOTE:

1. DETAILS HAVE BEEN SHOWN FOR OMITTING ONE, THREE AND FOUR CONTAINERS FROM A STANDARD PALLET UNIT. WHEN TWO CONTAINERS ARE TO BE OMITTED FROM A STANDARD PALLET UNIT, "FILLER B" IS TO BE USED. SEE THE "FILLER B" DETAIL ON PAGE 11. A COMBINATION OF FILLERS MUST BE USED WHEN SEVEN OR LESS CONTAINERS ARE TO BE OMITTED FROM A STANDARD PALLET UNIT. WHEN EIGHT CONTAINERS ARE TO BE OMITTED, A COMPLETE LAYER MUST BE OMITTED. ALL FILLER ASSEMBLIES MUST BE INSTALLED IN THE MIDDLE OF THE TOP LAYER OR LAYERS OF A PALLET UNIT.

FILL PIECE, 1" X 4" X 5" (4 REQD).
NAIL TO THE TIE PIECE W/2-6d NAILS
AND TO THE STRUTS W/2-6d NAILS
AT EACH END.



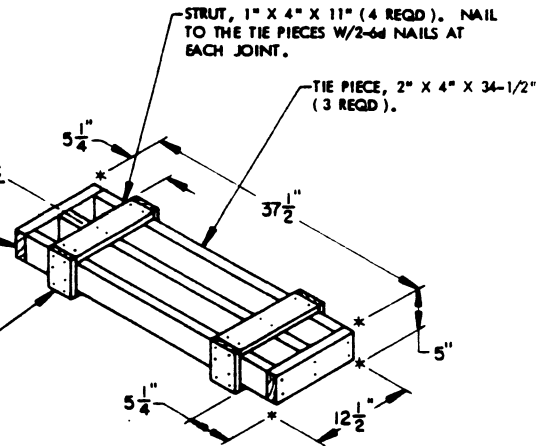
FILLER A

THIS FILLER IS TO BE USED WHEN ONE CONTAINER IS TO BE OMITTED FROM A PALLET UNIT, OR IN COMBINATION WITH OTHER FILLER ASSEMBLIES.

END BEARING PIECE, 2" X 4" X 5-1/8" (2 REQD).
NAIL TO THE TIE PIECES W/2-10d NAILS AT EACH END.

END BEARING PIECE, 2" X 4" X 11" (2 REQD).
NAIL TO THE TIE PIECES W/2-10d NAILS AT EACH JOINT.

FILL PIECE, 1" X 4" X 5" (4 REQD). NAIL TO THE TIE PIECE W/2-6d NAILS AND TO THE STRUTS W/2-6d NAILS AT EACH JOINT.



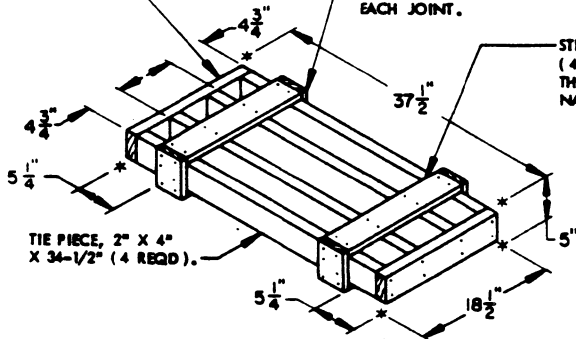
FILLER B

THIS FILLER IS TO BE USED WHEN TWO CONTAINERS ARE TO BE OMITTED FROM A PALLET UNIT, OR IN COMBINATION WITH OTHER FILLER ASSEMBLIES.

END BEARING PIECE, 2" X 4" X 17" (2 REQD). NAIL TO THE TIE PIECES W/2-10d NAILS AT EACH JOINT.

FILL PIECE, 1" X 4" X 5" (4 REQD). NAIL TO THE TIE PIECE W/2-6d NAILS AND TO THE STRUTS W/2-6d NAILS AT EACH JOINT.

STRUT, 1" X 4" X 17" (4 REQD). NAIL TO THE TIE PIECES W/2-6d NAILS AT EACH JOINT.



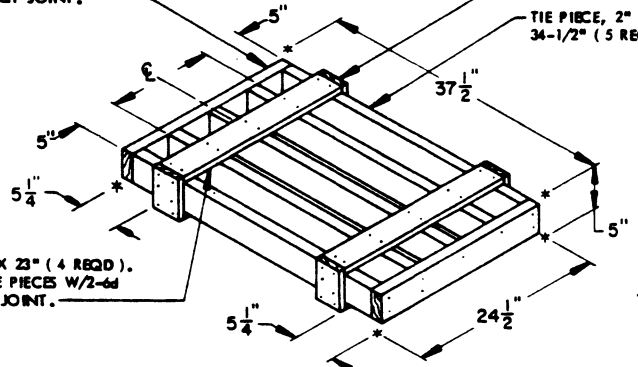
FILLER C

THIS FILLER IS TO BE USED WHEN THREE CONTAINERS ARE TO BE OMITTED FROM A PALLET UNIT, OR IN COMBINATION WITH OTHER FILLER ASSEMBLIES.

END BEARING PIECE, 2" X 4" X 23" (2 REQD). NAIL TO THE TIE PIECES W/2-10d NAILS AT EACH JOINT.

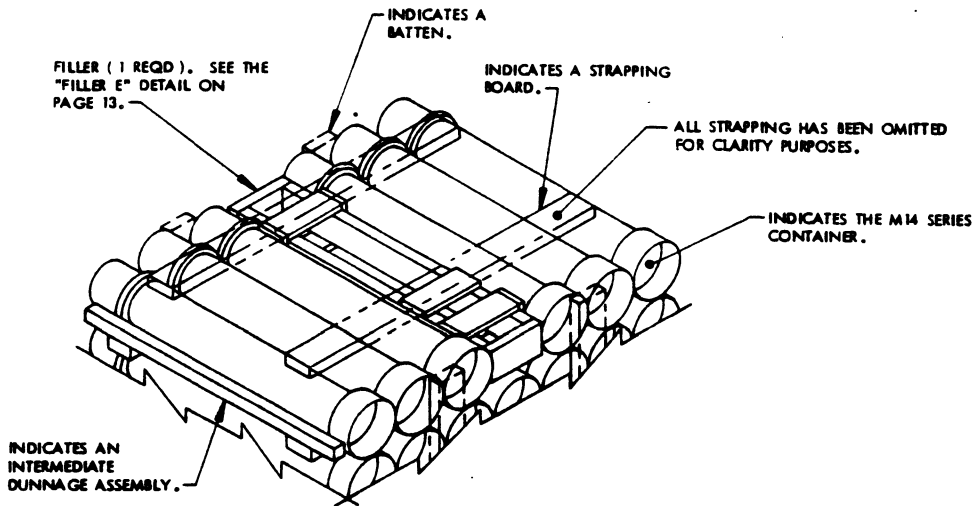
FILL PIECE, 1" X 4" X 5" (4 REQD). NAIL TO THE TIE PIECE W/2-6d NAILS AND TO THE STRUTS W/2-6d NAILS AT EACH JOINT.

TIE PIECE, 2" X 4" X 34-1/2" (5 REQD).



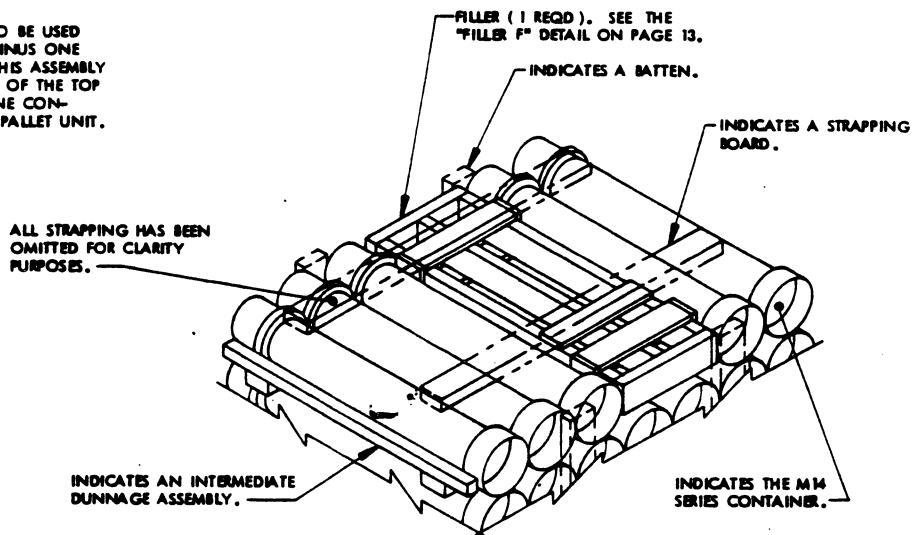
FILLER D

THIS FILLER IS TO BE USED WHEN FOUR CONTAINERS ARE TO BE OMITTED FROM A PALLET UNIT, OR IN COMBINATION WITH OTHER FILLER ASSEMBLIES.



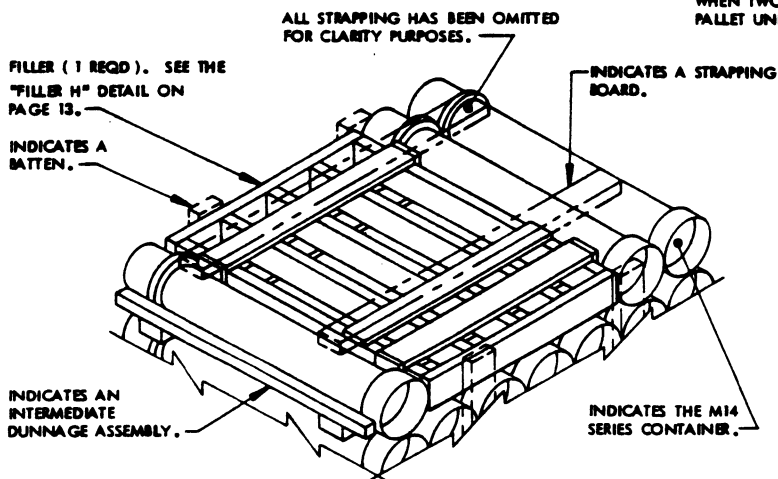
DETAIL D

THIS DETAIL DEPICTS PROCEDURES TO BE USED WHEN A STANDARD PALLET UNIT MINUS ONE CONTAINER IS TO BE UNITIZED. THIS ASSEMBLY MUST BE INSTALLED IN THE MIDDLE OF THE TOP LAYER OF A PALLET UNIT WHEN ONE CONTAINER IS TO BE OMITTED FROM A PALLET UNIT.



DETAIL E

THIS DETAIL DEPICTS PROCEDURES TO BE USED WHEN A STANDARD PALLET UNIT MINUS TWO CONTAINERS IS TO BE UNITIZED. THIS ASSEMBLY MUST BE INSTALLED IN THE MIDDLE OF THE TOP LAYER OF A PALLET UNIT WHEN TWO CONTAINERS ARE TO BE OMITTED FROM A PALLET UNIT.

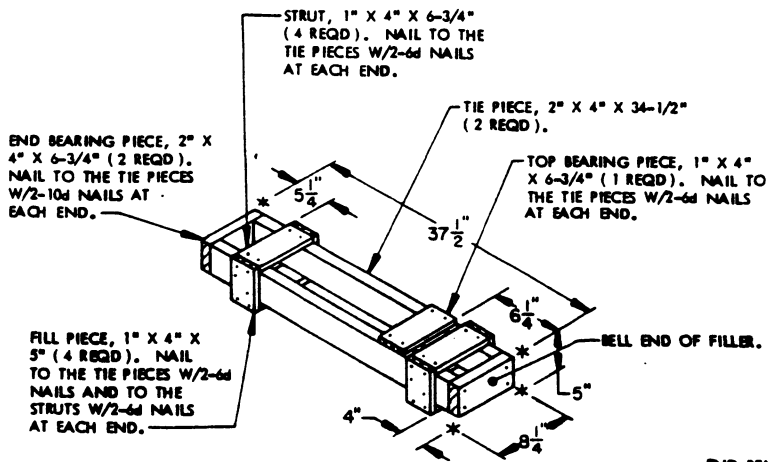


DETAIL F

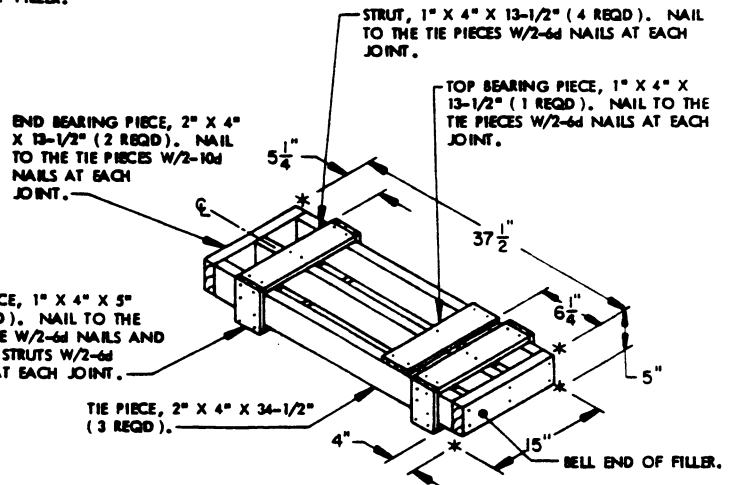
THIS DETAIL DEPICTS PROCEDURES TO BE USED WHEN A STANDARD PALLET UNIT MINUS FOUR CONTAINERS IS TO BE UNITIZED. THIS ASSEMBLY MUST BE INSTALLED IN THE MIDDLE OF THE TOP LAYER OF A PALLET UNIT WHEN FOUR CONTAINERS ARE TO BE OMITTED FROM A PALLET UNIT.

SPECIAL NOTES:

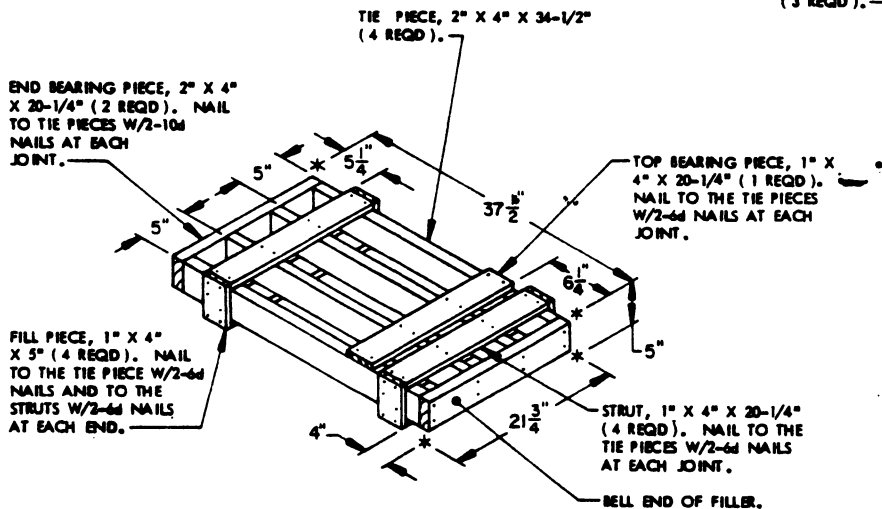
1. DETAILS HAVE BEEN SHOWN FOR OMITTING ONE, TWO OR FOUR CONTAINERS FROM A STANDARD PALLET UNIT. WHEN THREE CONTAINERS ARE TO BE OMITTED FROM A STANDARD PALLET UNIT, "FILLER G" IS TO BE USED. SEE THE "FILLER G" DETAIL ON PAGE 13. A COMBINATION OF FILLERS MUST BE USED WHEN SIX OR LESS CONTAINERS ARE TO BE OMITTED FROM A STANDARD PALLET UNIT. WHEN SEVEN CONTAINERS ARE TO BE OMITTED, A COMPLETE LAYER MUST BE OMITTED. ALL FILLER ASSEMBLIES MUST BE INSTALLED IN THE MIDDLE OF THE TOP LAYER OR LAYERS OF A PALLET UNIT.
2. WHEN USING FILLER ASSEMBLIES FOR OMITTING TWO, THREE, OR FOUR CONTAINERS FROM A PALLET UNIT, THE LENGTH OF THE BATTENS MUST BE ADJUSTED SO THAT TIGHTENING OF THE TIEDOWN STRAPS DOES NOT DAMAGE (I.E., BREAK OR SPLIT) THE ENDS OF THE BATTENS.



THIS FILLER IS TO BE USED WHEN ONE CONTAINER IS TO BE OMITTED FROM A PALLET UNIT, OR IN COMBINATION WITH OTHER FILLER ASSEMBLIES.



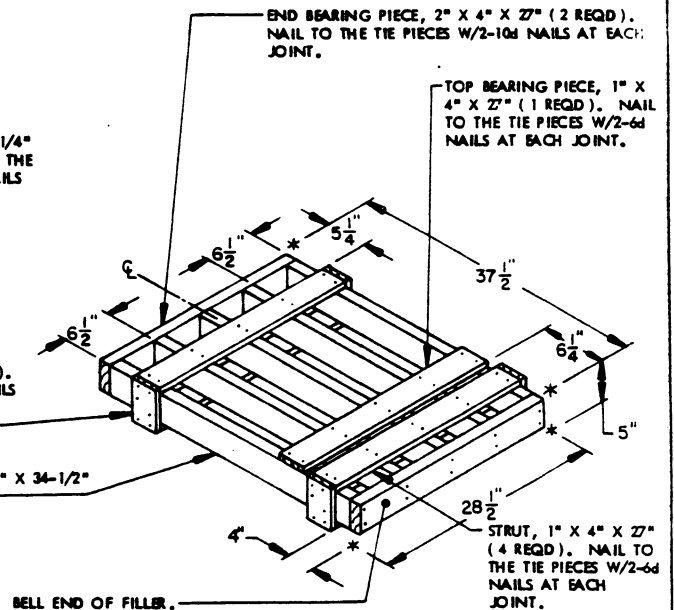
THIS FILLER TO BE USED WHEN TWO CONTAINERS ARE TO BE OMITTED FROM A PALLET UNIT, OR IN COMBINATION WITH OTHER FILLER ASSEMBLIES.



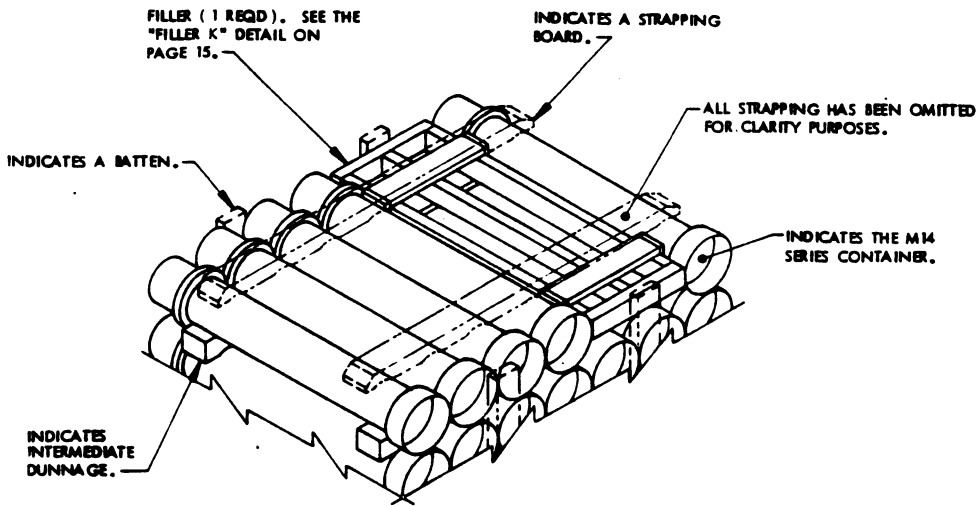
THIS FILLER TO BE USED WHEN THREE CONTAINERS ARE TO BE OMITTED FROM A PALLET UNIT, OR IN COMBINATION WITH OTHER FILLER ASSEMBLIES.

FILL PIECE, 1" X 4" X 5" (4 REQD). NAIL TO THE TIE PIECE W/2-6d NAILS AND TO THE STRUTS W/2-6d NAILS AT EACH END.

TIE PIECE, 2" X 4" X 34-1/2" (5 REQD).

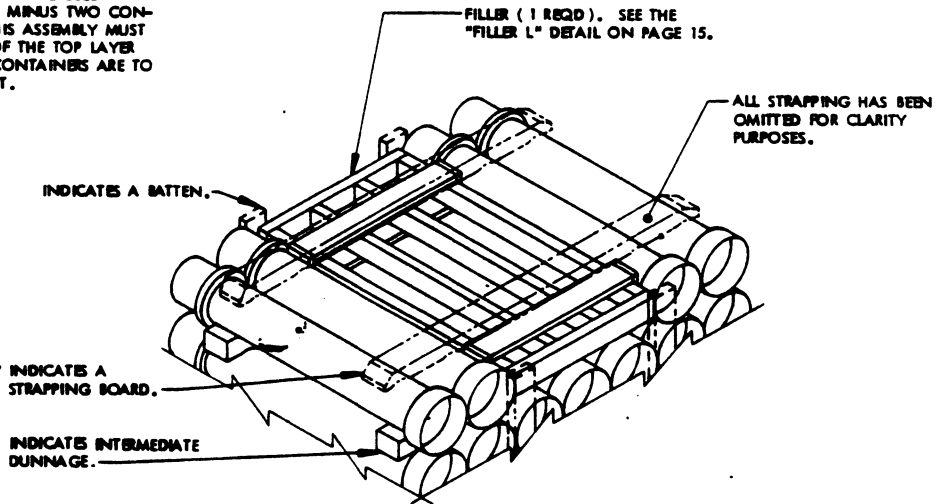


THIS FILLER TO BE USED WHEN FOUR CONTAINERS ARE TO BE OMITTED FROM A PALLET UNIT, OR IN COMBINATION WITH OTHER FILLER ASSEMBLIES.



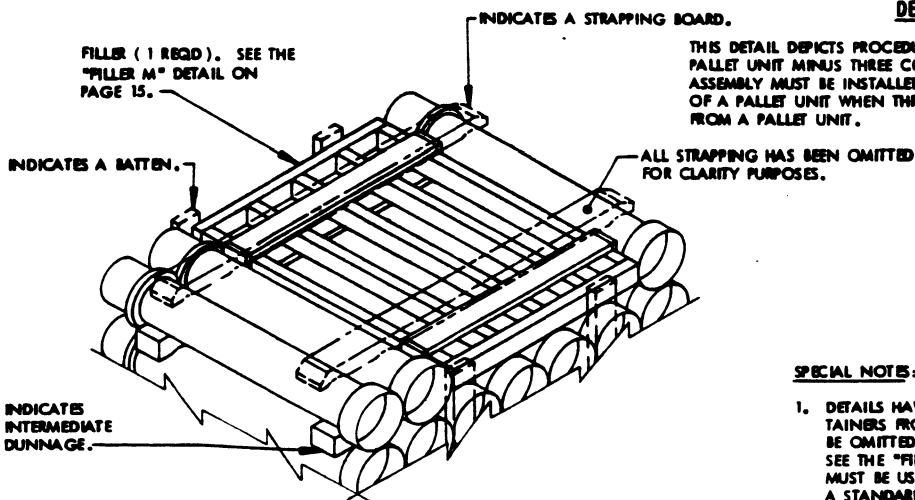
DETAIL G

THIS DETAIL DEPICTS PROCEDURES TO BE USED WHEN A STANDARD PALLET UNIT MINUS TWO CONTAINERS IS TO BE UNITIZED. THIS ASSEMBLY MUST BE INSTALLED IN THE MIDDLE OF THE TOP LAYER OF A PALLET UNIT WHEN TWO CONTAINERS ARE TO BE OMITTED FROM A PALLET UNIT.



DETAIL H

THIS DETAIL DEPICTS PROCEDURES TO BE USED WHEN A STANDARD PALLET UNIT MINUS THREE CONTAINERS IS TO BE UNITIZED. THIS ASSEMBLY MUST BE INSTALLED IN THE MIDDLE OF THE TOP LAYER OF A PALLET UNIT WHEN THREE CONTAINERS ARE TO BE OMITTED FROM A PALLET UNIT.

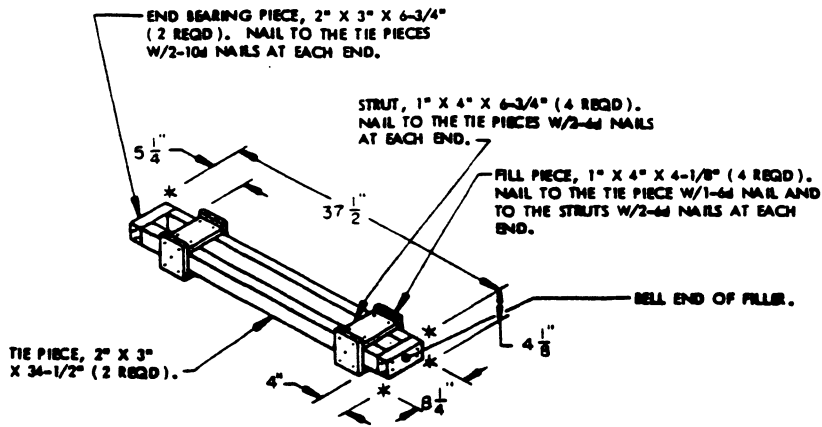


DETAIL J

THIS DETAIL DEPICTS PROCEDURES TO BE USED WHEN A STANDARD PALLET UNIT MINUS FOUR CONTAINERS IS TO BE UNITIZED. THIS ASSEMBLY MUST BE INSTALLED IN THE MIDDLE OF THE TOP LAYER OF A PALLET UNIT WHEN FOUR CONTAINERS ARE TO BE OMITTED FROM A PALLET UNIT.

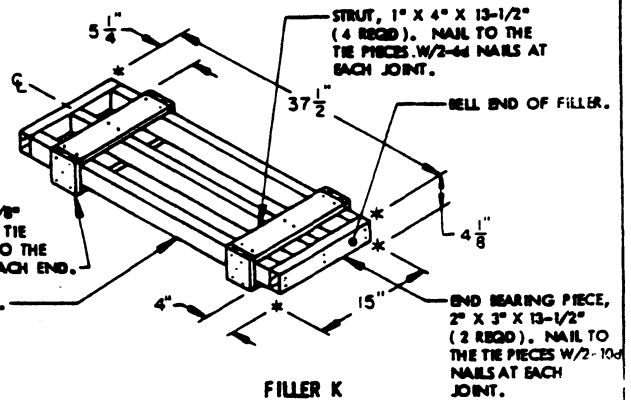
SPECIAL NOTES:

1. DETAILS HAVE BEEN SHOWN FOR OMITTING TWO, THREE OR FOUR CONTAINERS FROM A STANDARD PALLET UNIT. WHEN ONE CONTAINER IS TO BE OMITTED FROM A STANDARD PALLET UNIT, "FILLER J" IS TO BE USED. SEE THE "FILLER J" DETAIL ON PAGE 15. A COMBINATION OF FILLERS MUST BE USED WHEN SIX OR LESS CONTAINERS ARE TO BE OMITTED FROM A STANDARD PALLET UNIT. WHEN SEVEN CONTAINERS ARE TO BE OMITTED, A COMPLETE LAYER MUST BE OMITTED. ALL FILLER ASSEMBLIES MUST BE INSTALLED IN THE MIDDLE OF THE TOP LAYER OR LAYERS OF A PALLET UNIT.
2. WHEN USING FILLER ASSEMBLIES FOR OMITTING TWO, THREE, OR FOUR CONTAINERS FROM A PALLET UNIT, THE LENGTH OF THE BATTENS MUST BE ADJUSTED SO THAT TIGHTENING OF THE TIEDOWN STRAPS DOES NOT DAMAGE (I.E., BREAK OR SPLIT) THE ENDS OF THE BATTENS.



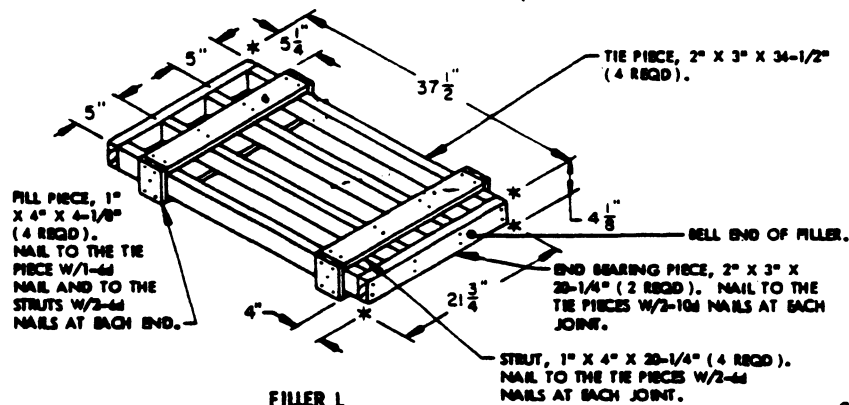
FILLER J

THIS FILLER TO BE USED WHEN ONE CONTAINER IS OMITTED FROM A PALLET UNIT, OR IN COMBINATION WITH OTHER FILLER ASSEMBLIES.



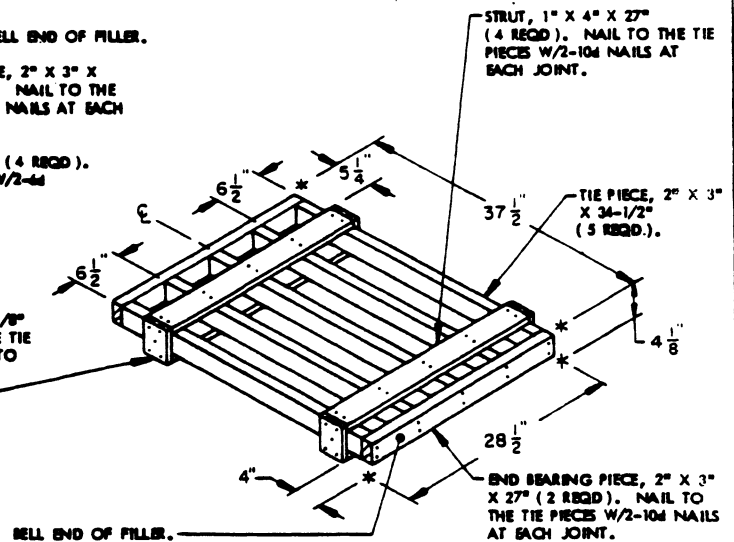
FILLER K

THIS FILLER TO BE USED WHEN TWO CONTAINERS ARE TO BE OMITTED FROM A PALLET UNIT, OR IN COMBINATION WITH OTHER FILLER ASSEMBLIES.



FILLER L

THIS FILLER TO BE USED WHEN THREE CONTAINERS ARE TO BE OMITTED FROM A PALLET UNIT, OR IN COMBINATION WITH OTHER FILLER ASSEMBLIES.



FILLER M

THIS FILLER TO BE USED WHEN FOUR CONTAINERS ARE TO BE OMITTED FROM A PALLET UNIT, OR IN COMBINATION WITH OTHER FILLER ASSEMBLIES.

