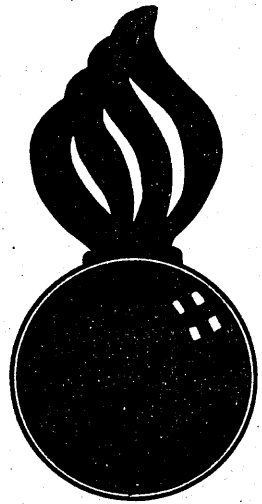


APPROVED
 BUREAU OF EXPLOSIVES
A. F. Grassmuck
 DATE 5/4/62 INSPECTOR

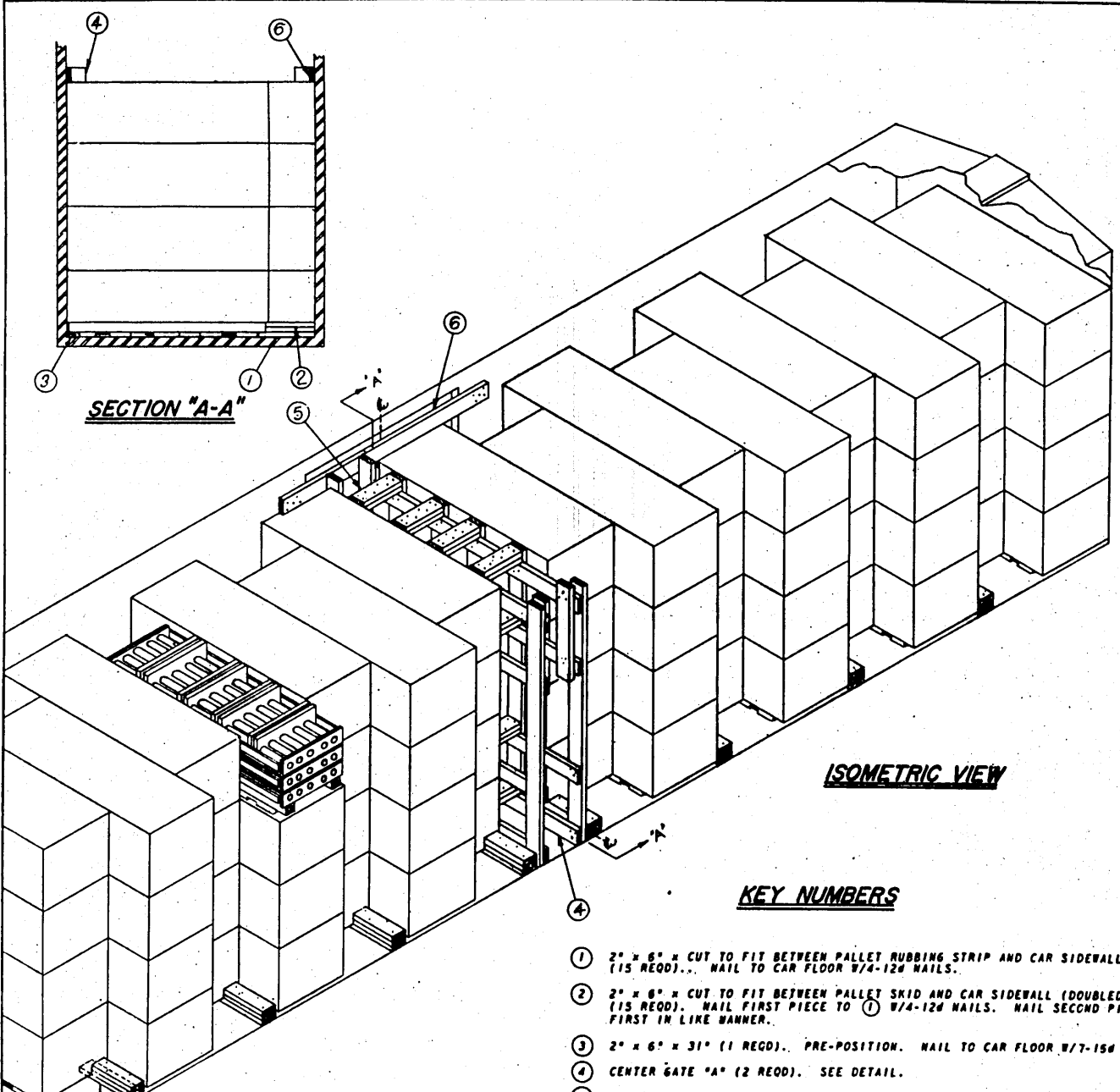


**LOADING & BRACING (CL & LCL) IN BOX CAR
 OF ROCKET, CHEMICAL, 115MM, M55,
 PACKED 15 PER SHIPPING AND
 STORAGE PALLET**

LOADING & BRACING (CL & LCL) IN BOX CAR OF
 ROCKET, CHEMICAL, 115MM, M55, PACKED 15 PER
 SHIPPING AND STORAGE PALLET

DESIGNED J.A.G.	DRAWN DIW/AL	QUANTITY 15
CHECKED RHA/GWP	CHECKED 988	EXAMINED Robert H. Palmistany LT COLONEL, ORD. CORPS U.S.A.
REVISIONS		APPROVED BY ORDER OF THE CHIEF OF BUREAU R.E. O'neal ORD. CORPS U.S.A.
		John P. Fiachin ORD. CORPS U.S.A.
		ORDNANCE CORPS U.S.A.
		9 MAY 1962
		CLASS DIVISION DRAWING FILE
		19 48 4038 5P1000

DO NOT SCALE

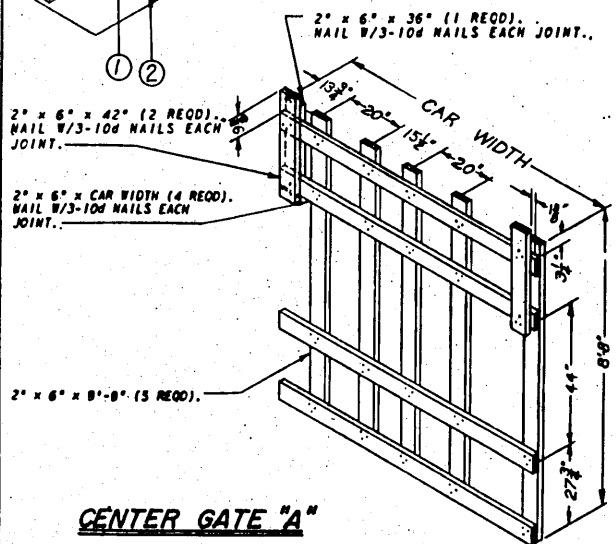


SECTION "A-A"

ISOMETRIC VIEW

KEY NUMBERS

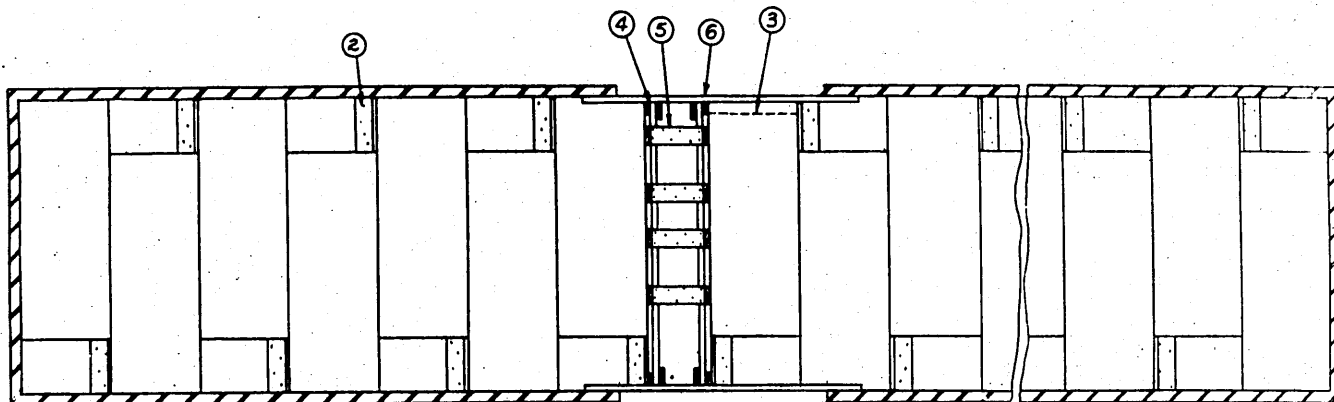
- ① 2" x 6" x CUT TO FIT BETWEEN PALLET RUBBING STRIP AND CAR SIDEWALL (15 REQD)... NAIL TO CAR FLOOR W/4-12d NAILS.
- ② 2" x 6" x CUT TO FIT BETWEEN PALLET SKID AND CAR SIDEWALL (DOUBLED) (15 REQD). NAIL FIRST PIECE TO ① W/4-12d NAILS. NAIL SECOND PIECE TO FIRST IN LIKE MANNER.
- ③ 2" x 6" x 31" (1 REQD). PRE-POSITION. NAIL TO CAR FLOOR W/7-15d NAILS.
- ④ CENTER GATE "A" (2 REQD). SEE DETAIL.
- ⑤ STRUTS, 2" x 8" x CUT TO FIT (DOUBLED) (16 REQD). LAMINATE W/4-10d NAILS. TOENAIL TO ④ W/2-12d NAILS EACH END. SEE STRUT BRACING DETAIL, PAGE 4.
- ⑥ GATE HOLDDOWN, 2" x 8" x DOOR WIDTH PLUS 24" (2 REQD). NAIL TO CAR WALL W/5-12d NAILS EACH END.



CENTER GATE "A"

(2 REQD)

ONE RIGHT HAND, AS SHOWN, AND ONE LEFT HAND



PLAN VIEW

40'-6" LONG x 8'-6" WIDE BOX CAR
(6'-0" DOORWAY SHOWN)

GENERAL NOTES

- A. LOADS AS SHOWN ARE BASED ON BOX CARS 40'-6" LONG x 8'-6" WIDE AND 50'-6" LONG x 9'-2" WIDE. SEE GENERAL NOTE "F".
- B. NOTICE: SHIPMENTS WILL BE POSITIONED IN THE RAIL CAR IN COMPLIANCE WITH THE WEIGHT DISTRIBUTION REQUIREMENTS OF THE AAR. THE NUMBER OF UNITS MAY BE ADJUSTED TO FIT THE RAIL CAR CONCERNED OR THE QUANTITY TO BE SHIPPED; HOWEVER, THE APPROVED METHODS CONTAINED HEREIN FOR FULL OR PARTIAL CAR LOAD MUST BE FOLLOWED FOR BLOCKING, BRACING AND STAYING OF THIS ITEM.
- C. FOR DETAIL OF PALLET SEE DRAWING NO. C 19-64-1472. PALLET DIMENSIONS - 93" LONG x 31" WIDE x 27 1/2" HIGH. GROSS WEIGHT - 1,300 POUNDS (APPROX).
- D. THIS ITEM IS AN ICC CLASS "A" EXPLOSIVE. PROCEDURES SHOWN HEREIN ARE APPLICABLE FOR THE SHIPMENT OF PALLETS WITH INERT LOADED, EMPTY OR PRACTICE ROCKETS.
- E. FOR AUTHORIZED METHOD OF BRACING PARTIAL LAYERS, SEE PAGE 5 AND ORD CORPS DRAWING 19-49-2213-5P34.
- F. CAUTION: LOADING PATTERN SELECTED (STAGGERED OR ALIGNED) REGARDLESS OF CAR LENGTH, DEPENDS ON THE CAR WIDTH; PALLETS SHOULD BE POSITIONED SO THAT THE STRONG POINTS OF ONE PALLET BEAR ON THE STRONG POINTS OF ADJACENT PALLETS, AND SO THAT ADEQUATE AREA IS AVAILABLE FOR NAILING SIDE BLOCKING.

BILL OF MATERIAL

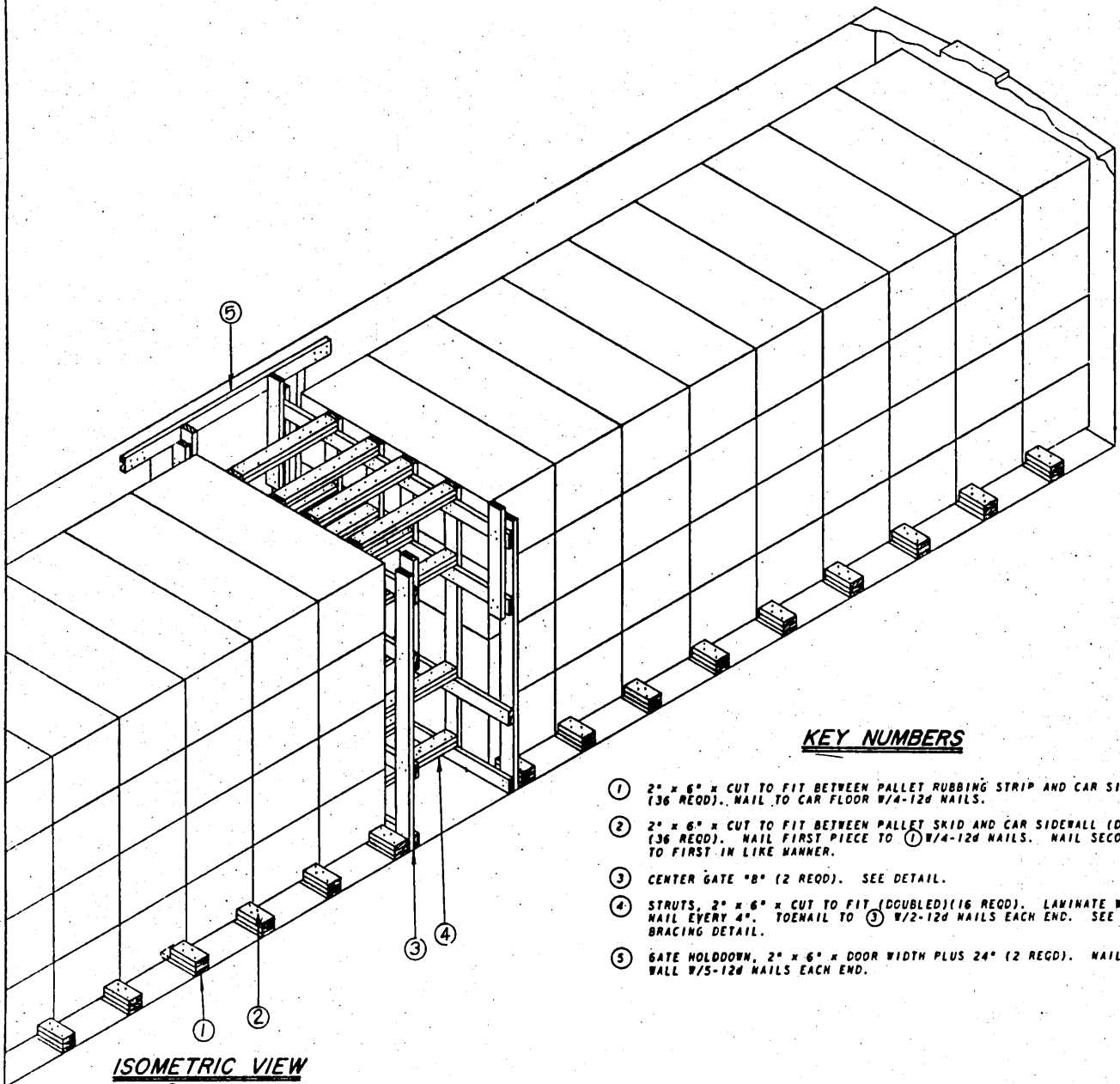
LUMBER	LINEAL FEET	BOARD FEET
2" x 6"	317	317
NAILS	NO. REQD	POUNDS
10d (3")	220	3 1/2
12d (3 1/2")	264	4 1/2
15d (3 3/4")	7	1/4

MATERIAL SPECIFICATIONS

LUMBER: SEE PARAGRAPH S400, ORDN 3-4, VOL 2.
 NAILS: COMMON, CEMENT COATED, FED SPEC FF-N-109.
 ALT: ANNULAR-RING TYPE NAIL OF SAME SIZE.

LOAD AS SHOWN

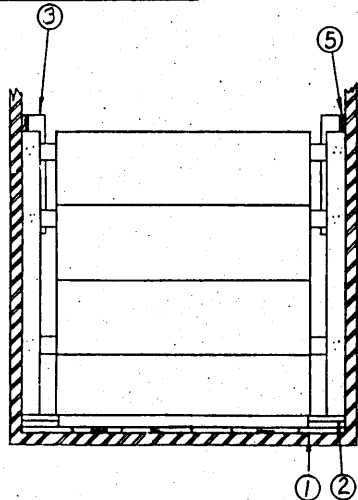
ITEM	QUANTITY	WEIGHT
PALLETS	60	79,000 LBS (APPROX)
DUNNAGE		801 LBS
TOTAL WEIGHT		79,801 LBS



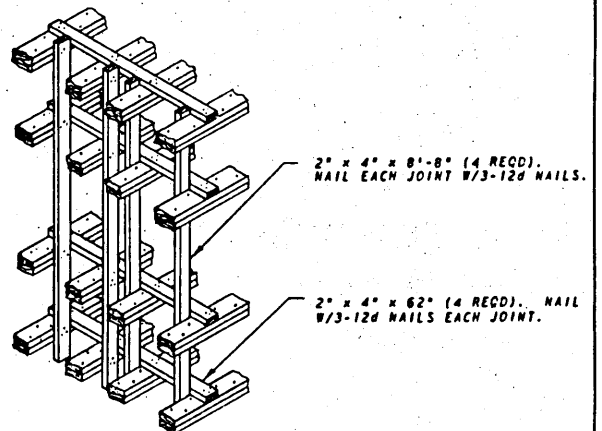
ISOMETRIC VIEW

KEY NUMBERS

- ① 2" x 6" x CUT TO FIT BETWEEN PALLET RUBBING STRIP AND CAR SIDEWALL (36 REQD.). NAIL TO CAR FLOOR W/4-12d NAILS.
- ② 2" x 6" x CUT TO FIT BETWEEN PALLET SKID AND CAR SIDEWALL (DOUBLED). (36 REQD.). NAIL FIRST PIECE TO ① W/4-12d NAILS. NAIL SECOND PIECE TO FIRST IN LIKE MANNER.
- ③ CENTER GATE "B" (2 REQD.). SEE DETAIL.
- ④ STRUTS, 2" x 6" x CUT TO FIT (DOUBLED) (16 REQD.). LAMINATE W/1-10d NAIL EVERY 4". TOENAIL TO ③ W/2-12d NAILS EACH END. SEE STRUT BRACING DETAIL.
- ⑤ GATE HOLDDOWN, 2" x 6" x DOOR WIDTH PLUS 24" (2 REQD.). NAIL TO CAR WALL W/5-12d NAILS EACH END.

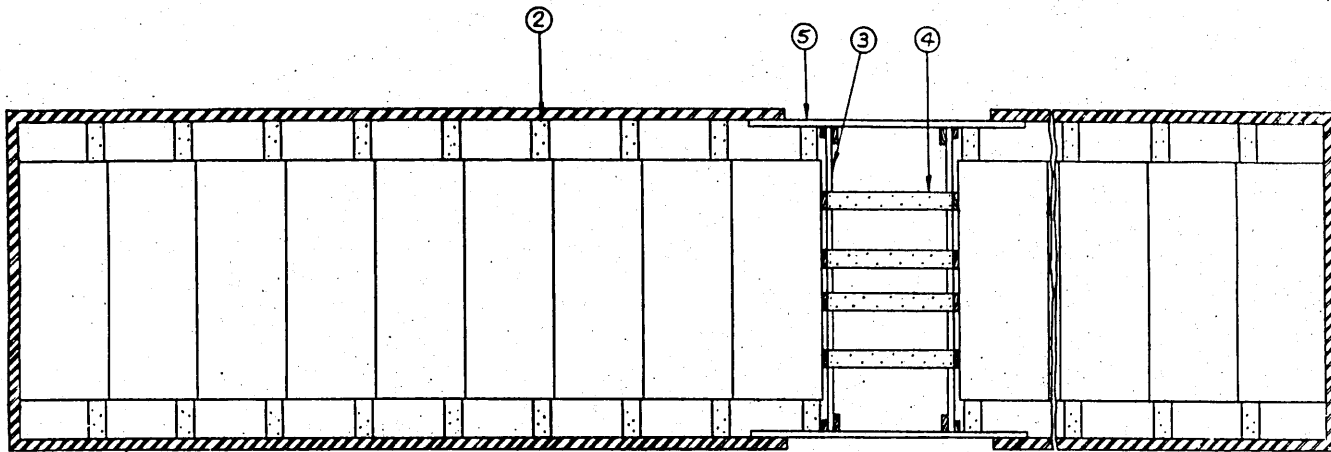


SECTION "A-A"



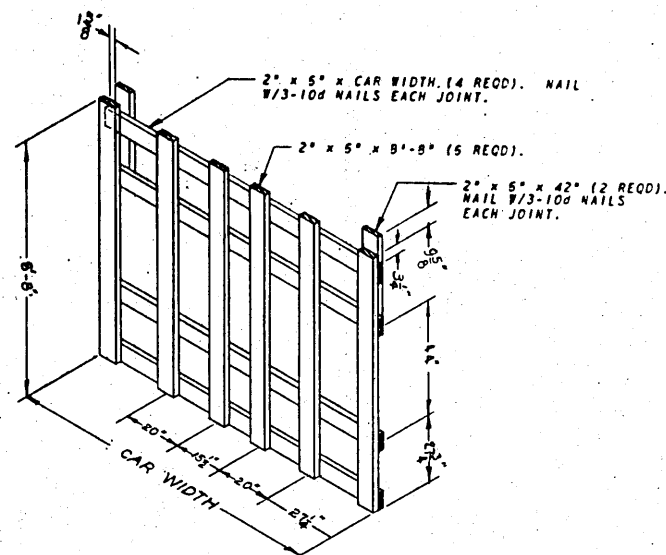
STRUT BRACING

FOR STRUTS 48" OR GREATER IN LENGTH



PLAN VIEW

50'-6" LONG x 9'-2" WIDE BOX CAR
(6'-0" DOORWAY SHOWN)



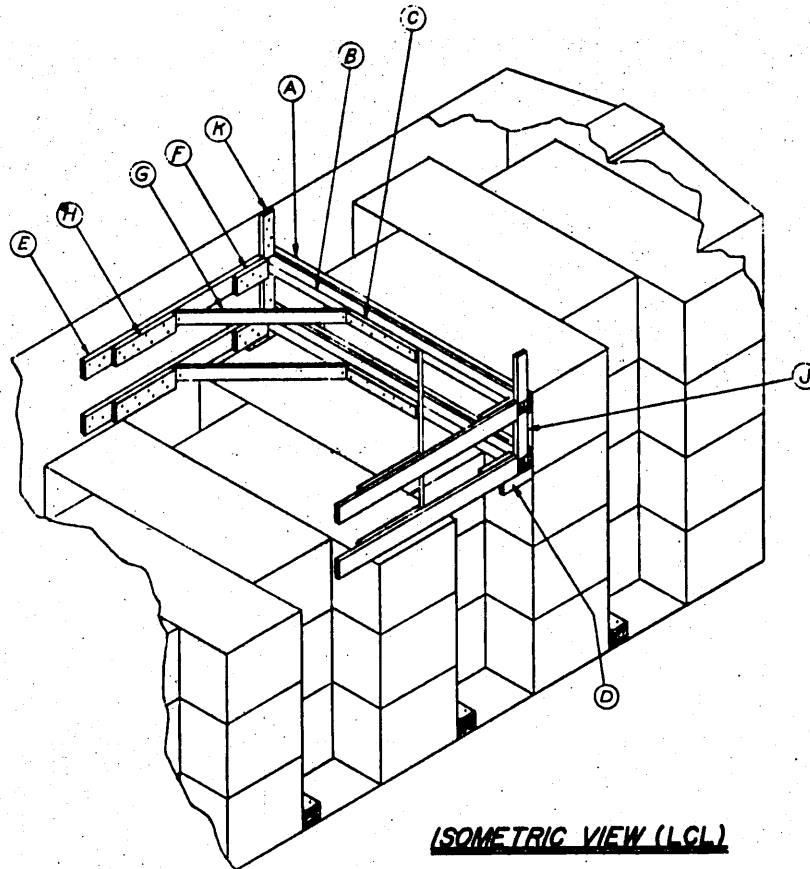
CENTER GATE "B"

(2 REED)

BILL OF MATERIAL		
LUMBER	LINEAL FEET	BOARD FEET
2" x 5"	450	450
NAILS	NO. REQD.	POUNDS
10d (3")	344	5½
12d (3½")	515	9½

LOAD AS SHOWN

ITEM	QUANTITY	WEIGHT
PALLETS	72	93,500 LBS (APPROX)
DUNNAGE		1,165 LBS
TOTAL WEIGHT		94,765 LBS

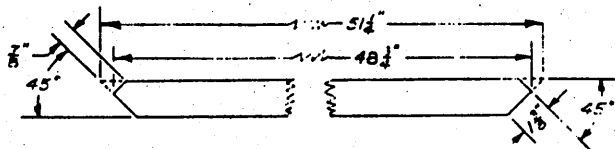


ISOMETRIC VIEW (LCL)

PARTIAL FOURTH LAYER SHOWN. PROCEDURE APPLICABLE FOR PARTIAL FIRST, SECOND, OR THIRD LAYERS. SEE PAGES 2, 3, 4, AND 5 FOR BRACING OF FULL LAYERS. 6'-6" WIDE CAR SHOWN ABOVE; HOWEVER, PROCEDURES ARE APPLICABLE FOR 9'-2" WIDE CAR LOADING PATTERN.

LUMBER AND NAILING INFORMATION *

PC	LUMBER	NO. REQD	NAIL TP.	NAILS
A	2" x 5" x CAR WIDTH	2	B	1-12d NAIL EVERY 9"
B	4" x 4" x CAR WIDTH	2		
C	2" x 4" x 32"	2	E	7-12d NAILS
D	2" x 4" x 12"	2	CAR WALL	4-12d NAILS
E	2" x 5" x 5'-0"	4	CAR WALL	15-12d NAILS
F	2" x 5" x 12"	4	E	4-20d NAILS
G	2" x 4" (SEE DETAIL)	4	B & E	2-15d NAILS EACH END
H	2" x 5" x 24"	4	E	8-20d NAILS
J	2" x 4" x 11"	2	CAR WALL	4-12d NAILS
K	2" x 4" x 12" (MIN)	2	CAR WALL	4-12d NAILS



DETAIL OF PIECE (G)

* "K-BRACE" SHOWN IS APPLICABLE FOR BRACING A MAX OF FIVE PALLETS. SEE GENERAL NOTE "E", PAGE 3, FOR BRACING PROCEDURES REQUIRED FOR A GREATER NUMBER.