

GENERAL NOTES

- A. THIS DOCUMENT HAS BEEN PREPARED AND ISSUED IN ACCORDANCE WITH AMCR 740-13, AND AUGMENTS TM-743-200-1 (CHAPTER 5).
- B. THIS PROCEDURAL DRAWING IS APPLICABLE TO TRAILERS AND/OR CONTAINERS WHICH ARE EQUIPPED WITH SPECIAL BULKHEAD SYSTEMS AS SPECIFIED WITHIN THE BUREAU OF EXPLOSIVES PAMPHLET NO. 6C AND APPENDICES THERETO. SUBSEQUENT REFERENCE TO A TRAILER THROUGHOUT THIS DOCUMENT MEANS A TRAILER OR CONTAINER FOR TOFC AND/OR COFC SHIPMENTS. ONLY RAILCARS WHICH ARE SPECIFIED BY THE BUREAU OF EXPLOSIVES PAMPHLET NO. 6C, OR THE AFOREMENTIONED APPENDICES, WILL BE USED.
- C. TYPICAL LOADS SHOWN ARE BASED ON THE FOLLOWING TRAILERS.
 - 1. TRAILERS WHICH ARE EQUIPPED WITH SPECIAL BULKHEAD BRACES HAVING 35'-0" BETWEEN THE BULKHEAD BOARDS. THESE LOADS REQUIRE THE USE OF STRAPPING TO SECURE THE UPRIGHT BRACES. SEE PAGES 4 THRU 7.
 - 2. TRAILERS WHICH HAVE A BULKHEAD BUILT INTO THE FRONT WALL AND ARE EQUIPPED WITH A SPECIAL BULKHEAD BRACE AT THE REAR OF THE TRAILER. THE DISTANCE FROM THE FRONT WALL TO THE BULKHEAD BOARDS AT THE REAR IS 38'-6". STRAPPING IS NOT REQUIRED FOR THESE LOADS. SEE PAGES 8 AND 9.
 - 3. TRAILERS WHICH ARE EQUIPPED WITH A CAMUS III RESTRAINING SYSTEM. THIS SYSTEM CONSISTS OF ADJUSTABLE BULKHEADS AT THE FRONT AND REAR OF THE TRAILER. THE DISTANCE BETWEEN THE BULKHEADS AT THE MAXIMUM OPEN POSITION IS 37'-8-1/2", THE DISTANCE AT THE MINIMUM CLOSED POSITION IS 30'-4-1/2". SEE PAGES 10 AND 11.
- D. ALL LOADS SHOWN ARE BASED ON TRAILERS WHICH ARE 40'-0" LONG BY 7'-8-1/2" WIDE (INSIDE DIMENSION) WITH WOOD, WOOD AND METAL, OR METAL FLOORS. THE DELINEATED OUTLOADING PROCEDURES ARE ALSO APPLICABLE TO NARROWER TRAILERS.
- E. THE GROSS WEIGHT AND AXLE DISTRIBUTION OF WEIGHT FOR A LOAD WILL BE THE RESPONSIBILITY OF THE CARRIER. THE CARRIER WILL ADVISE THE SHIPPER OF THE APPLICABLE LOADING REQUIREMENTS, AND THE SHIPPER WILL LOAD ACCORDINGLY. **NOTICE:** A SHIPMENT WILL BE POSITIONED IN A TRAILER CONSISTENT WITH THE WEIGHT LAWS OF THE STATES THRU WHICH THE TRAILER WILL BE TRANSPORTED BY HIGHWAY (MOTOR CARRIER).
- F. THE NUMBER OF LADING UNITS MAY BE ADJUSTED TO FIT THE SIZE OF THE TRAILER TO BE LOADED OR THE QUANTITY TO BE SHIPPED; HOWEVER, THE APPROVED METHODS SHOWN HEREIN MUST BE FOLLOWED AS CLOSELY AS POSSIBLE FOR BLOCKING, BRACING, AND STAYING OF THE DESIGNATED ITEM.
- G. WHEN STEEL STRAPPING IS SEALED AT AN END-OVER-END LAP JOINT AS SHOWN, A MINIMUM OF TWO (2) SEALS, BUTTED TOGETHER, WITH TWO (2) PAIR OF CRIMPS PER SEAL MUST BE USED TO SEAL THE JOINT.
- H. IF SPECIAL AUTHORITY IS GRANTED BY HIGHER HEADQUARTERS, AND PROVIDING THEY ARE FURNISHED BY THE CARRIER, REUSABLE WEB STRAP ASSEMBLIES IDENTIFIED AS AEROQUIP CORPORATION PART NO. FE2000079C MAY BE UTILIZED IN LIEU OF THE SPECIFIED 2" STEEL STRAPPING FOR THE SECUREMENT OF THE UPRIGHT BRACE IN THE LOADS DEPICTED ON PAGES 4 THRU 7. THE SHIPPER IS RESPONSIBLE FOR CLOSE INSPECTION OF THE WEB STRAP ASSEMBLIES DURING INSTALLATION TO ENSURE THAT ASSEMBLIES WHICH HAVE BEEN DAMAGED SUFFICIENTLY TO IMPAIR THEIR STRENGTH WILL NOT BE USED. SCUFF SLEEVES WILL BE POSITIONED TO PROVIDE PADDING WHERE A WEB STRAP IS BEARING ON AN UPRIGHT BRACE. THE STRAPPING WILL BE DRAWN TAUT WHEN ASSEMBLIES ARE TENSIONED, AND MUST FORM AT LEAST ONE AND ONE-HALF COMPLETE WRAPS ON A TAKEUP SPOOL OF A TENSIONING DEVICE. A SOCKET WRENCH HAVING AN 18" HANDLE CAN BE USED TO ACHIEVE PROPER STRAP TAUTNESS. ONE MAN, UNASSISTED AND USING THE LEVER ADVANTAGE OF AN 18" LONG WRENCH HANDLE TO ITS FULLEST EXTENT, CAN ACHIEVE THE PROPER PRESTRESS IN A WEB STRAP ASSEMBLY.
- J. DUNNAGE LUMBER SPECIFIED THROUGHOUT THIS PROCEDURAL DRAWING IS OF NOMINAL SIZE, FOR EXAMPLE, 1" X 4" MATERIAL IS ACTUALLY 3/4" THICK BY 3-5/8" WIDE OR 3/4" THICK BY 3-1/2" WIDE AND 2" X 6" MATERIAL IS ACTUALLY 1-5/8" THICK BY 5-5/8" WIDE OR 1-1/2" THICK BY 5-1/2" WIDE.
- K. **NOTICE:** A STAGGERED NAILING PATTERN WILL BE USED WHEREVER POSSIBLE WHEN NAILS ARE DRIVEN INTO JOINTS OF DUNNAGE ASSEMBLIES, OR WHEN LAMINATING DUNNAGE. THE NAILING PATTERN FOR AN UPPER PIECE OF LAMINATED DUNNAGE WILL BE ADJUSTED AS REQUIRED SO THAT A NAIL FOR THAT PIECE WILL NOT BE DRIVEN THROUGH ONTO OR RIGHT BESIDE A NAIL IN A LOWER PIECE.
- L. DO NOT NAIL BLOCKING TO THE TRAILER WALLS OR FLOOR OR BULKHEADS, ALL NAILING WILL BE WITHIN THE DUNNAGE.
- M. PORTIONS OF THE TRAILER BODIES DEPICTED WITHIN THIS PROCEDURAL DRAWING SUCH AS ONE OF THE SIDEWALLS, HAVE NOT BEEN SHOWN IN THE LOAD VIEWS FOR CLARITY PURPOSES.

(CONTINUED AT RIGHT)

MATERIAL SPECIFICATIONS

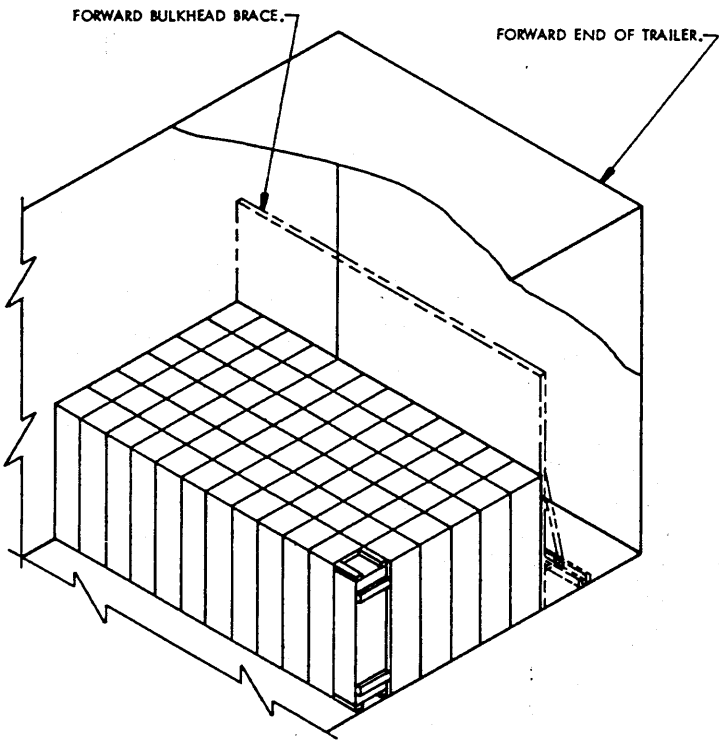
- LUMBER** ----- : SEE TM 743-200-1, DUNNAGE LUMBER; FED SPEC MM-L-751.
- NAILS**----- : COMMON, CEMENT COATED OR CHEMICALLY ETCHED; FED SPEC FF-N-105. ALT: ANNULAR-RING TYPE NAIL OF SAME SIZE.
- STRAPPING, STEEL**--- : TYPE I OR IV, CLASS A OR B FOR 1-1/4" STRAPPING AND CLASS A, B, OR C FOR 2" STRAPPING, FED SPEC QQ-S-781F.
- STRAP SEAL**----- : COMMERCIAL GRADE.

- N. FOR ADDITIONAL GUIDANCE, ATTENTION IS DIRECTED TO THE "SPECIAL NOTES" SECTION WHICH IS IMMEDIATELY ADJACENT TO A DEPICTED OUTLOADING METHOD.
- O. CARE SHOULD BE EXERCISED WHEN LOADS ARE BUILT (SELECTION OF BOX POSITIONS, NUMBER OF LAYERS, ETC.) TO INSURE THE MINIMUM USAGE OF INTERNAL BLOCKING AND BRACING.

REVISIONS

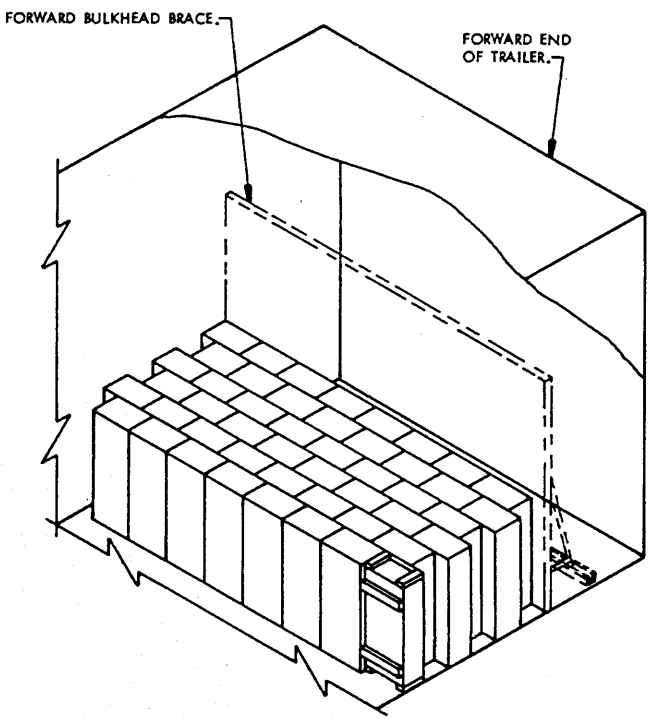
REVISION NO. 1, DATED JANUARY 74, CONSISTS OF:

- 1. DELETING PROCEDURES FOR TRAILERS HAVING 25'-0" BETWEEN BULKHEADS.
- 2. ADDING PROCEDURES FOR TRAILERS HAVING 35'-0" BETWEEN BULKHEADS.
- 3. ADDING PROCEDURES FOR TRAILERS HAVING 38'-6" BETWEEN BULKHEADS.
- 4. ADDING PROCEDURES FOR TRAILERS EQUIPPED WITH CAMUS III RESTRAINING SYSTEMS HAVING 30'-4-1/2" TO 37'-8-1/2" BETWEEN ADJUSTABLE BULKHEADS.
- 5. CHANGES NECESSARY TO UPDATE THE DRAWING FORMAT.



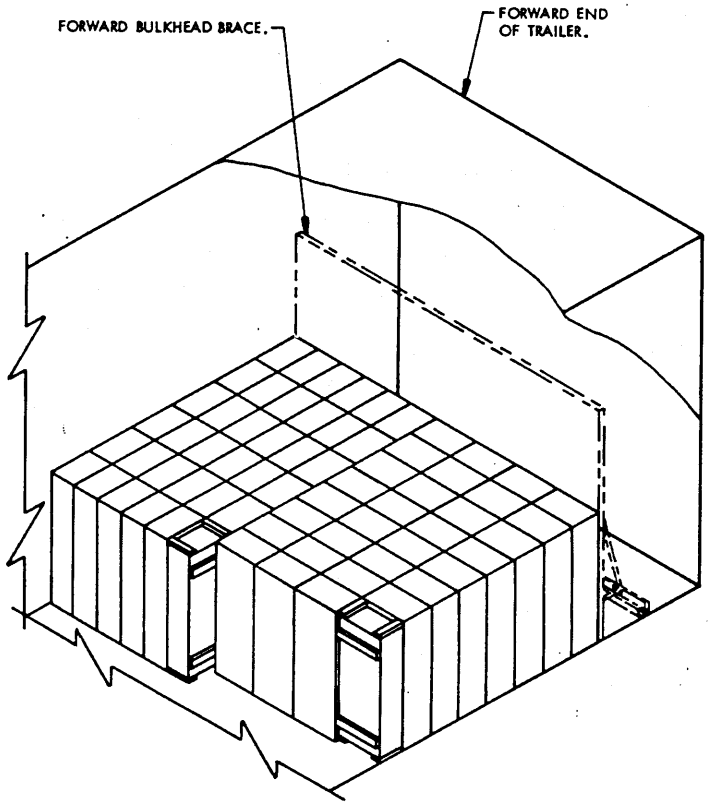
BOX POSITION A

EXCESS SPACE ACROSS THE TRAILER WIDTH MUST NOT EXCEED 1/3 OF THE BOX DIMENSION. SEE "NOTE ●" BELOW.



BOX POSITION B

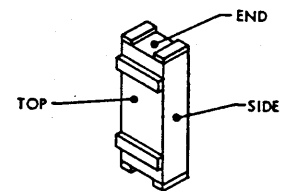
ROWS OF BOXES MAY BE STAGGERED AS SHOWN ABOVE. EXCESS SPACE ACROSS THE TRAILER WIDTH MUST NOT EXCEED 1/3 OF THE BOX DIMENSION. SEE "NOTE ●" BELOW.



BOX POSITION AB

A COMBINATION OF BOX POSITIONS MAY BE USED TO UTILIZE THE MAXIMUM SPACE ACROSS THE TRAILER WIDTH. EXCESS SPACE ACROSS THE TRAILER WIDTH MUST NOT EXCEED 1/3 OF THE SMALLEST BOX DIMENSION. SEE "NOTE ●".

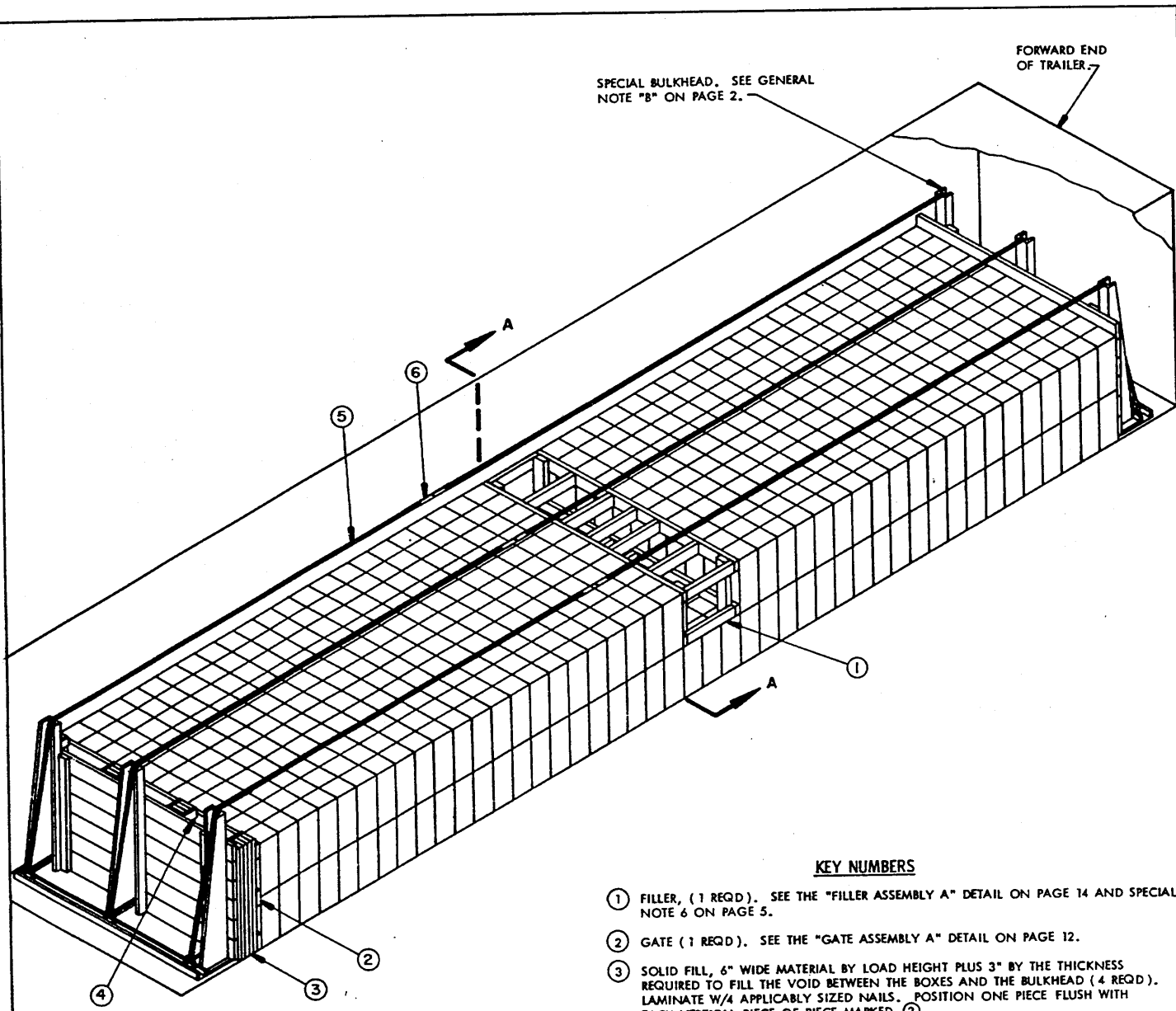
TYPICAL AUTHORIZED BOX POSITIONS



BOX DETAIL

NOTE ● :

IF EXCESS SPACE ACROSS THE TRAILER WIDTH EXCEEDS 1/3 OF THE BOX DIMENSION A SPACER ASSEMBLY, SUCH AS SHOWN IN THE LOAD ON PAGE 10, MUST BE USED.



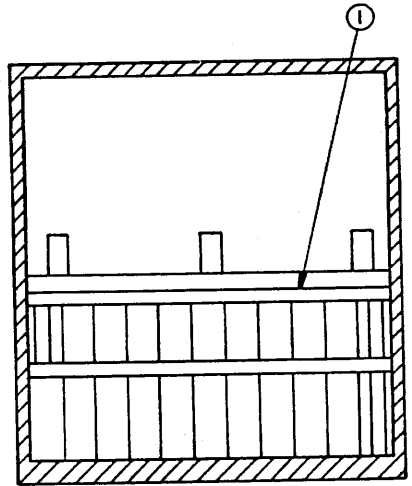
SPECIAL BULKHEAD. SEE GENERAL NOTE "B" ON PAGE 2.

FORWARD END OF TRAILER.

ISOMETRIC VIEW

KEY NUMBERS

- ① FILLER, (1 REQD). SEE THE "FILLER ASSEMBLY A" DETAIL ON PAGE 14 AND SPECIAL NOTE 6 ON PAGE 5.
- ② GATE (1 REQD). SEE THE "GATE ASSEMBLY A" DETAIL ON PAGE 12.
- ③ SOLID FILL, 6" WIDE MATERIAL BY LOAD HEIGHT PLUS 3" BY THE THICKNESS REQUIRED TO FILL THE VOID BETWEEN THE BOXES AND THE BULKHEAD (4 REQD). LAMINATE W/4 APPLICABLY SIZED NAILS. POSITION ONE PIECE FLUSH WITH EACH VERTICAL PIECE OF PIECE MARKED ②.
- ④ CLEAT, 1" X 4" BY CUT TO FIT (6 REQD). NAIL TO THE SOLID FILL W/3-6d NAILS.
- ⑤ BULKHEAD STRAP, 2" X .050" X 60'-0" STEEL STRAPPING (3 REQD). INSTALL EACH STRAP FROM TWO (2) 30'-0" LONG PIECES. SEE GENERAL NOTE "G" ON PAGE 2.
- ⑥ SEAL FOR 2" STRAPPING (18 REQD, 2 PER STRAP JOINT). DOUBLE-CRIMP EACH SEAL.



SECTION A-A

SPECIAL NOTES:

1. A TYPICAL LOAD OF UNPALLETIZED WP AND PWP AMMUNITION IS SHOWN IN A 7'-8-1/2" WIDE (INSIDE DIMENSION) TRAILER HAVING 35'-0" BETWEEN THE INSTALLED BULKHEADS. THE PROCEDURES SHOWN WILL APPLY TO ALL UNPALLETIZED WP AND PWP AMMUNITION LOADED IN TRAILERS OF VARIOUS INSIDE WIDTH AND LENGTH.
2. BOX DETAIL: 57MM CARTRIDGE IS SHOWN AS TYPICAL.
DIMENSIONS ——— 21-7/8" LONG X 8-3/8" WIDE X 9-1/8" HIGH.
GROSS WEIGHT ——— 43.5 POUNDS (APPROX).
3. IF THE EXCESS SPACE BETWEEN THE REAR OF THE LADING AND THE INSTALLED BULKHEAD IS GREATER THAN 18" USE A GATE AND STRUTS, AS SHOWN IN THE LOAD ON PAGE 8, IN LIEU OF SOLID FILL.
4. A COMBINATION OF LOADING PROCEDURES, AS SHOWN IN THE LOAD ON PAGE 6, MAY BE USED TO ATTAIN A MAXIMUM QUANTITY AND/OR BEST UTILIZATION OF TRAILER SPACE.
5. IF THE EXCESS SPACE ACROSS THE WIDTH OF THE TRAILER EXCEEDS ONE THIRD OF THE BOX DIMENSION LATERAL BRACING, SUCH AS SHOWN IN THE LOAD ON PAGE 10, WILL BE REQUIRED.
6. "FILLER ASSEMBLY A" MUST ONLY BE USED IN THE TOP LAYER OF A LOAD.

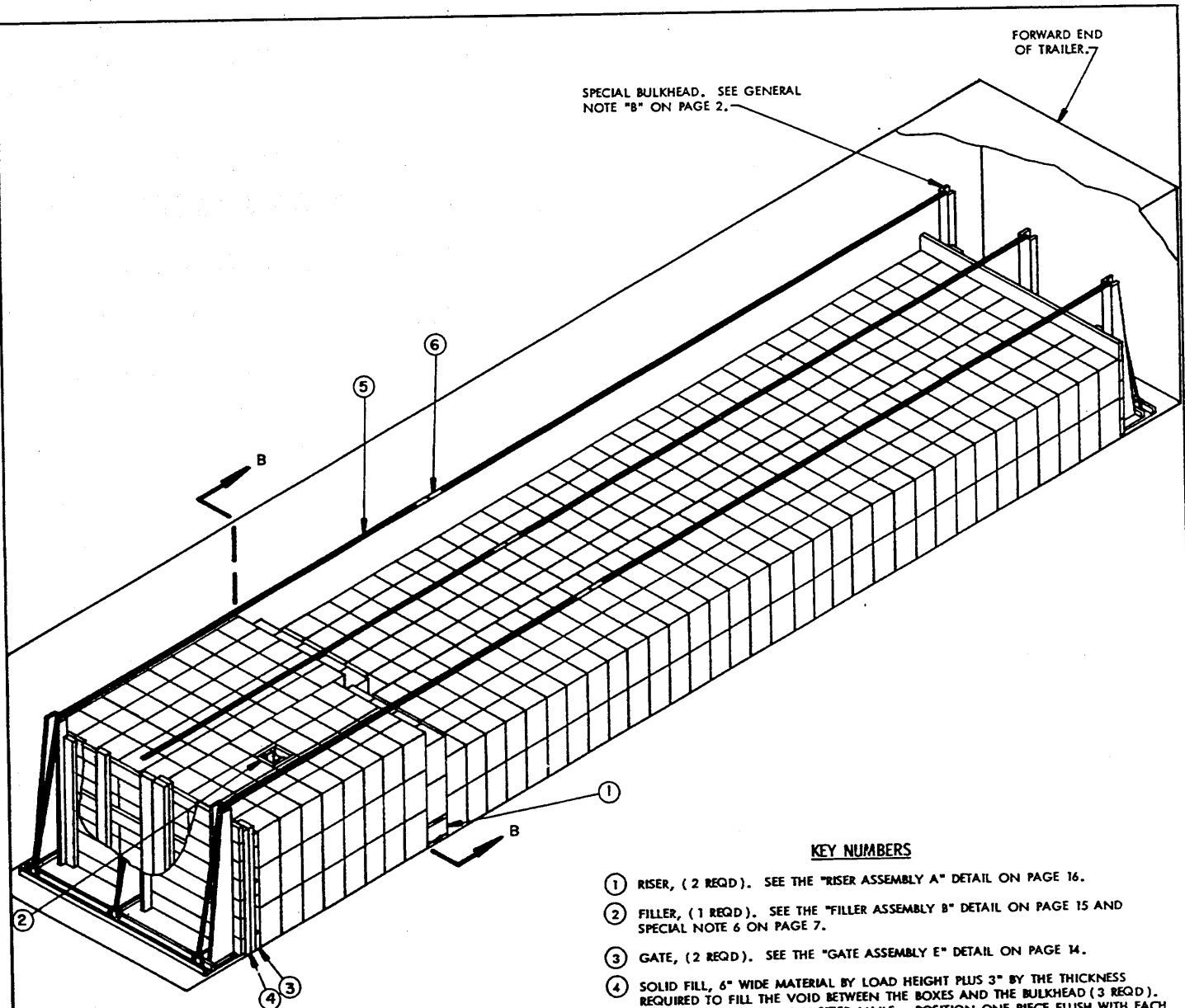
BILL OF MATERIAL

LUMBER	LINEAR FEET	BOARD FEET
1" X 4"	4	2
2" X 4"	66	44
2" X 6"	100	100
NAILS	NO. REQD	POUNDS
6d (2")	18	1/4
10d (3")	124	1-3/4
12d (3-1/4")	56	1
STEEL STRAPPING, 2" X .050" ——— 180' REQD ——— 60 LBS		
SEAL FOR 2" STRAPPING ——— 18 REQD ——— 4 LBS		

LOAD AS SHOWN

ITEM	QUANTITY	WEIGHT (APPROX)
CARTRIDGE, 57MM, BOXED—P57 BOXES—	41,630	LBS
DUNNAGE—	432	LBS
TOTAL WEIGHT ———	42,062	LBS

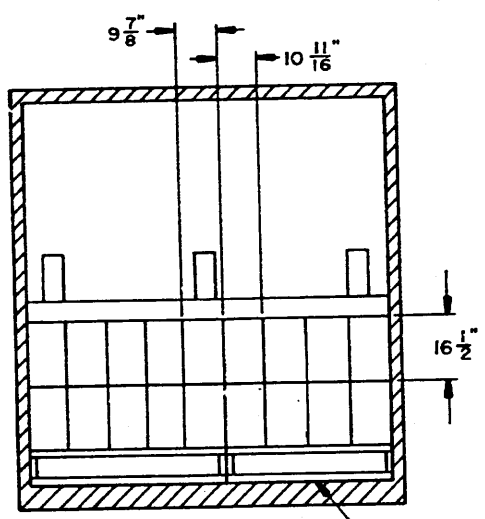
TYPICAL LOAD IN A TRAILER HAVING 35'-0" BETWEEN FIXED BULKHEADS



ISOMETRIC VIEW

KEY NUMBERS

- ① RISER, (2 REQD). SEE THE "RISER ASSEMBLY A" DETAIL ON PAGE 16.
- ② FILLER, (1 REQD). SEE THE "FILLER ASSEMBLY B" DETAIL ON PAGE 15 AND SPECIAL NOTE 6 ON PAGE 7.
- ③ GATE, (2 REQD). SEE THE "GATE ASSEMBLY E" DETAIL ON PAGE 14.
- ④ SOLID FILL, 6" WIDE MATERIAL BY LOAD HEIGHT PLUS 3" BY THE THICKNESS REQUIRED TO FILL THE VOID BETWEEN THE BOXES AND THE BULKHEAD (3 REQD). LAMINATE W/4 APPLICABLY SIZED NAILS. POSITION ONE PIECE FLUSH WITH EACH VERTICAL PIECE OF PIECE MARKED ③.
- ⑤ BULKHEAD STRAP, 2" X .050" X 60'-0" STEEL STRAPPING (3 REQD). INSTALL EACH STRAP FROM TWO (2) 30'-0" LONG PIECES. SEE GENERAL NOTE "G" ON PAGE 2.
- ⑥ SEAL FOR 2" STRAPPING (18 REQD, 2 PER STRAP JOINT). DOUBLE-CRIMP EACH SEAL.



SECTION B-B

TYPICAL LOAD IN A TRAILER HAVING 35'-0" BETWEEN FIXED BULKHEADS

SPECIAL NOTES:

1. A TYPICAL LOAD OF UNPALLETIZED WP AND PWP AMMUNITION IS SHOWN IN A 7'-8-1/2" WIDE (INSIDE DIMENSION) TRAILER HAVING 35'-0" BETWEEN THE INSTALLED BULKHEADS. THE PROCEDURES SHOWN WILL APPLY TO ALL UNPALLETIZED WP AND PWP AMMUNITION LOADED IN TRAILERS OF VARIOUS WIDTH AND LENGTH.
2. BOX DETAIL: 60MM CARTRIDGE IS SHOWN AS TYPICAL.
DIMENSIONS----- 16-1/2" LONG X 9-7/8" WIDE X 10-11/16" HIGH.
GROSS WEIGHT ----- 52 POUNDS (APPROX).
3. IF THE EXCESS SPACE BETWEEN THE REAR OF THE LADING AND THE INSTALLED BULKHEAD IS GREATER THAN 18" USE GATES AND STRUTS, AS SHOWN IN THE LOAD ON PAGE 8, IN LIEU OF SOLID FILL.
4. A COMBINATION OF LOADING PROCEDURES, AS SHOWN, MAY BE USED TO ATTAIN A MAXIMUM QUANTITY AND/OR BEST UTILIZATION OF TRAILER SPACE.
5. WHEN USING RISER ASSEMBLIES CARE MUST BE TAKEN TO ASSURE THAT BOXES ARE RETAINED Laterally.
6. "FILLER ASSEMBLY B" MUST ONLY BE USED IN THE TOP LAYER OF A LOAD.
7. DIMENSIONS SHOWN IN SECTION B-B ON PAGE 6 APPLY ONLY TO THE 60MM CARTRIDGE BOX AND ARE SHOWN FOR INFORMATION PURPOSES ONLY. THESE DIMENSIONS WILL BE DIFFERENT FOR OTHER LADING ITEMS. THIS PROCEDURE SHOWS A TYPICAL BOX POSITION AS IDENTIFIED ON PAGE 3.

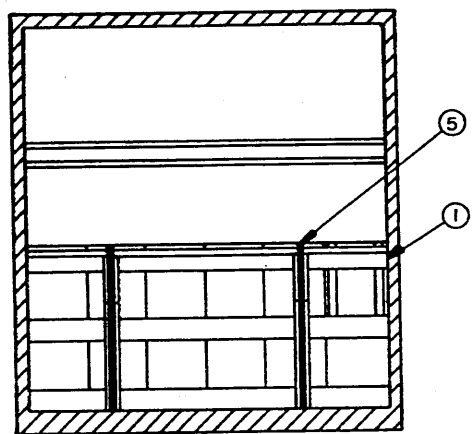
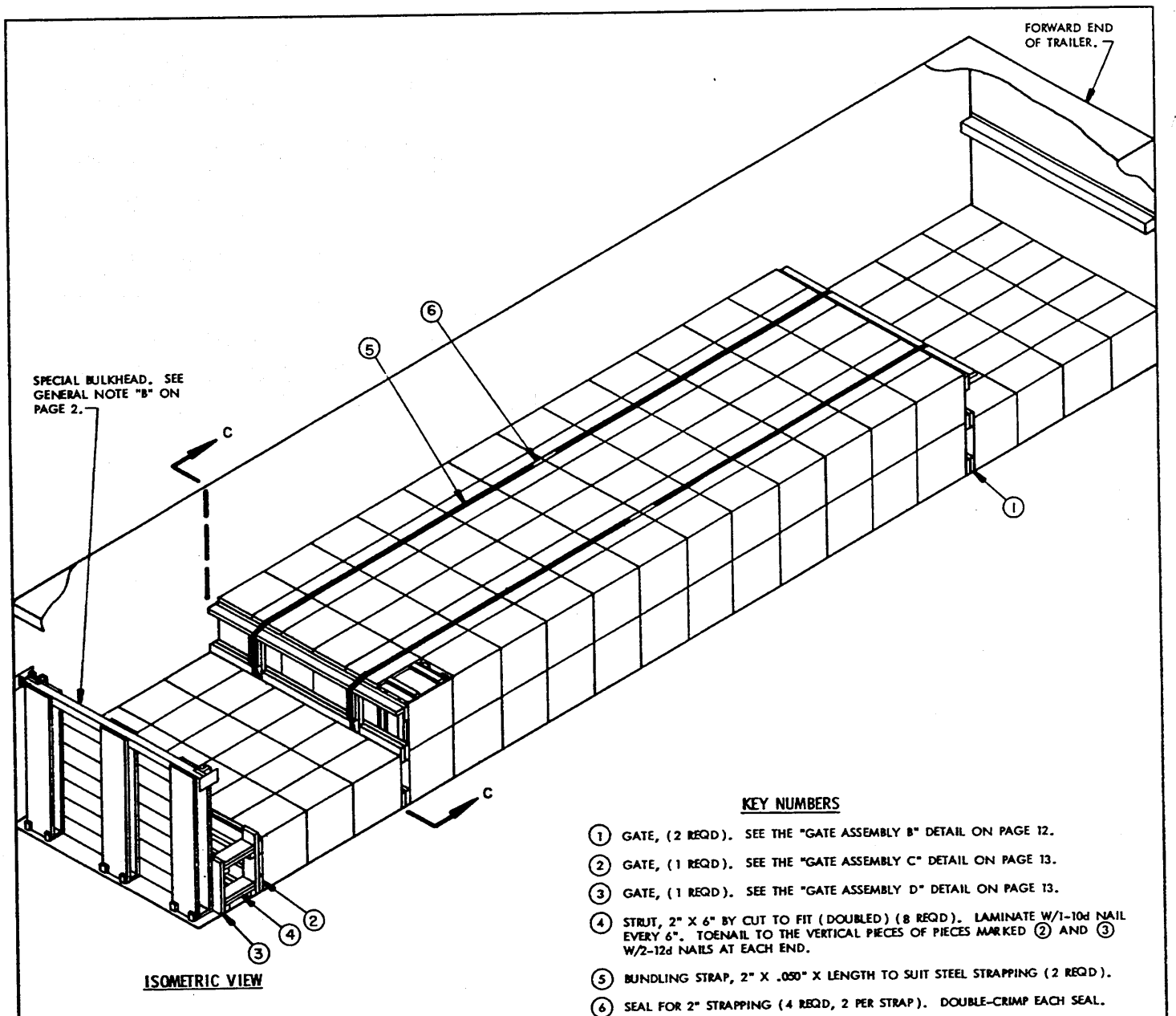
BILL OF MATERIAL

LUMBER	LINEAR FEET	BOARD FEET
2" X 4"	40	27
2" X 6"	80	80
NAILS	NO. REQD	POUNDS
10d (3")	66	1-
12d (3-1/4")	72	1-1/4
STEEL STRAPPING, 2" X .050' - 180' REQD -----		60 LBS
SEAL FOR 2" STRAPPING ----- 18 REQD -----		4 LBS

LOAD AS SHOWN

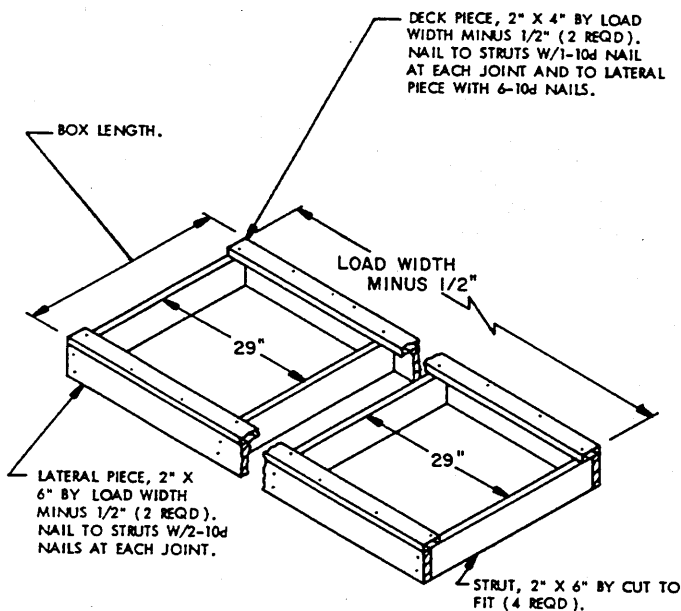
ITEM	QUANTITY	WEIGHT (APPROX)
CARTRIDGE, 60MM, BOXED	797 BOXES	41,444 LBS
DUNNAGE		334 LBS
TOTAL WEIGHT-----		41,778 LBS

TYPICAL LOAD IN A TRAILER HAVING 35'-0' BETWEEN FIXED BULKHEADS



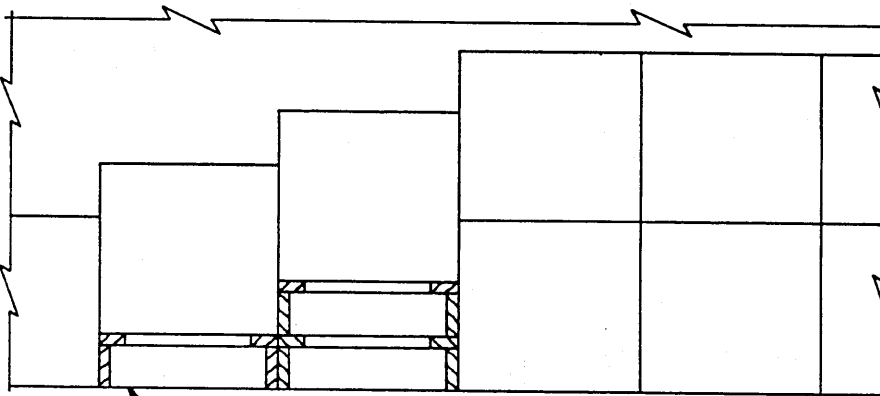
SPECIAL NOTES:

1. A TYPICAL LOAD OF UNPALLETIZED WP AND PWP AMMUNITION IS SHOWN IN A 7'-8-1/2" WIDE (INSIDE DIMENSION) TRAILER HAVING 38'-6" BETWEEN THE BULKHEAD AT THE FRONT (BUILT INTO THE FRONT WALL) AND THE INSTALLED BULKHEAD AT THE REAR. THE PROCEDURES SHOWN WILL APPLY TO ALL UNPALLETIZED WP AND PWP AMMUNITION LOADED IN TRAILERS OF VARIOUS INSIDE WIDTH AND LENGTH.
2. **BOX DETAIL:** 2.75" ROCKET IS SHOWN AS TYPICAL.
DIMENSIONS ----- 23-1/6" LONG X 14-7/8" WIDE X 21-27/32" HIGH.
GROSS WEIGHT ----- 219 POUNDS (APPROX).
3. IF THE EXCESS SPACE BETWEEN THE REAR OF THE LADING AND THE INSTALLED BULKHEAD IS 18" OR LESS USE SOLID FILL, AS SHOWN IN THE LOAD ON PAGE 4, IN LIEU OF GATE AND STRUTS.
4. TO PRECLUDE BOX CRUSHING, TWO (2) "GATE ASSEMBLY B" MUST ALWAYS BE USED FOR THE SHIPMENT OF PARTIAL SECOND LAYERS EVEN THOUGH THE PARTIAL LAYER MIGHT BE POSITIONED DIRECTLY AGAINST ONE OF THE BULKHEADS.
5. A COMBINATION OF LOADING PROCEDURES, AS SHOWN IN THE LOADS ON PAGES 6 AND 8, MAY BE USED TO ATTAIN A MAXIMUM QUANTITY AND/OR BEST UTILIZATION OF TRAILER SPACE. ALSO, SEE SPECIAL NOTE 7 BELOW.
6. IF THE EXCESS SPACE ACROSS THE WIDTH OF THE TRAILER EXCEEDS 1/3 OF THE BOX DIMENSION LATERAL BRACING, SUCH AS SHOWN IN THE LOAD ON PAGE 10, WILL BE REQUIRED.
7. AS AN ALTERNATIVE TO THE SPECIFIED PARTIAL LAYER BRACING METHOD, A "RISER" METHOD AS DELINEATED ON THIS PAGE MAY BE USED. SIX (6) RISER ASSEMBLIES INSTALLED AS TWO SETS OF THREE (3) EACH IN A DOUBLE STEP ARRANGEMENT AS SHOWN IN THE DETAIL BELOW, WILL BE USED INSTEAD OF TWO (2) EACH GATES AND LOAD-BUNDLING STRAPS AS DEPICTED WITHIN THE LOAD VIEW ON PAGE 8.



RISER ASSEMBLY B

THE ASSEMBLY AS DEPICTED IS DESIGNED FOR STEPPING UP OR STEPPING DOWN A LOAD THAT IS SIX CONTAINERS WIDE. THE 29" SPACING DIMENSION FOR THE STRUTS IS BASED ON THE BOX TYPICALLY SHOWN IN THE LOAD ON PAGE 8. THE SPACING AND NUMBER USED WILL BE DEPENDENT ON THE BOX BEING SHIPPED. ENOUGH STRUTS WILL BE USED TO INSURE THAT EACH ROW WITHIN A LOAD IS BLOCKED.



RISER ASSEMBLY B (3 REQD AT EACH BLOCKING STATION).

INSTALLATION OF RISER ASSEMBLY B

A PARTIAL SIDE ELEVATION OF THE LOAD DEPICTED ON PAGE 8 IS SHOWN, WITH THE LOADING PATTERN MODIFIED FOR THE USE OF RISER ASSEMBLIES.

BILL OF MATERIAL		
LUMBER	LINEAR FEET	BOARD FEET
2" X 2"	31	11
2" X 4"	33	22
2" X 6"	123	123
NAILS	NO. REQD	POUNDS
10d (3")	182	3
STEEL STRAPPING, 2" X .050" --- 110' REQD		37 LBS
SEAL FOR 2" STRAPPING		1 LB

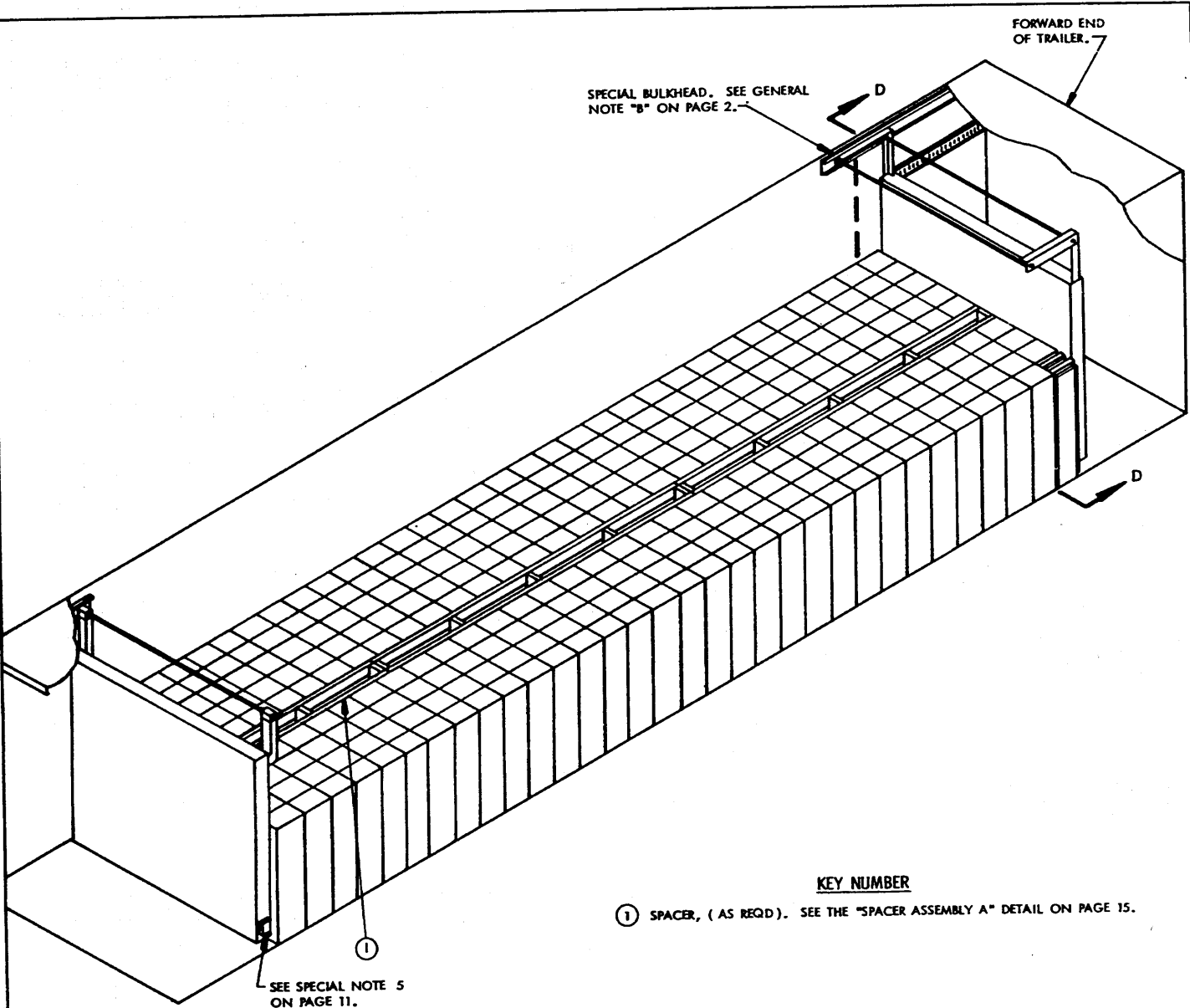
LOAD AS SHOWN

ITEM	QUANTITY	WEIGHT (APPROX)
ROCKET, 2.75", BOXED	186 BOXES	40,734 LBS
DUNNAGE		431 LBS
TOTAL WEIGHT		41,165 LBS

TYPICAL LOAD IN A TRAILER HAVING 38'-6" BETWEEN FIXED BULKHEADS

SPECIAL BULKHEAD. SEE GENERAL NOTE "B" ON PAGE 2.

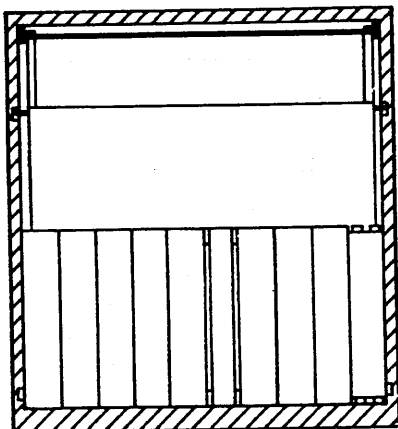
FORWARD END OF TRAILER.



SEE SPECIAL NOTE 5 ON PAGE 11.

KEY NUMBER

① SPACER, (AS REQD). SEE THE "SPACER ASSEMBLY A" DETAIL ON PAGE 15.



SECTION D-D

SPECIAL NOTES:

1. A TYPICAL LOAD OF UNPALLETIZED WP AND PWP AMMUNITION IS SHOWN IN A 40'-0" LONG BY 7'-6" WIDE (INSIDE DIMENSION) TRAILER WHICH IS EQUIPPED WITH A CAMUS III RESTRAINING SYSTEM. THE PROCEDURES SHOWN WILL APPLY TO ALL UNPALLETIZED WP AND PWP AMMUNITION LOADED IN TRAILERS OF VARIOUS INSIDE WIDTH AND LENGTH.
2. BOX DETAIL: 2.75" ROCKET IS SHOWN AS TYPICAL.
 DIMENSIONS ----- 46-13/16" LONG X 11-7/8" WIDE X 9-9/32" HIGH.
 GROSS WEIGHT ----- 141 POUNDS (APPROX).
3. NO BLOCKING IS REQUIRED BETWEEN THE REAR OF THE LADING AND THE REAR BULKHEAD WHEN USING A CAMUS TRAILER.
4. IF THE EXCESS SPACE ACROSS THE WIDTH OF THE TRAILER EXCEEDS ONE THIRD OF THE BOX DIMENSION, LATERAL BRACING, SUCH AS SHOWN IN THE LOAD ON PAGE 10, WILL BE REQUIRED.
5. FILLER BLOCKS, AS SHOWN IN "FILLER BLOCK DETAIL" ON PAGE 16, MUST BE USED TO REDUCE LATERAL MOVEMENT OF THE REAR BULKHEAD IN A CAMUS III TRAILER.

BILL OF MATERIAL

LUMBER	LINEAR FEET	BOARD FEET
2" X 4"	127	85
2" X 6"	51	51
NAILS	NO. REQD	POUNDS
10d (3")	96	1-1/2

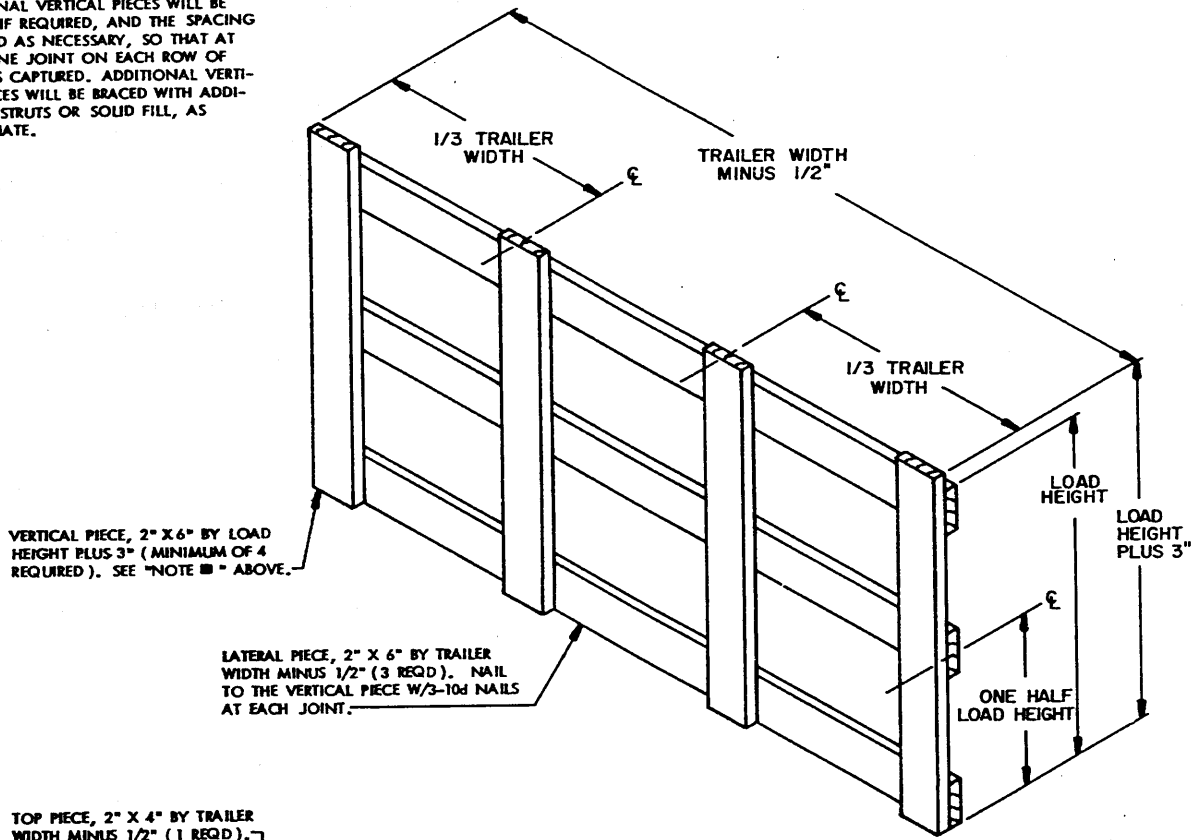
LOAD AS SHOWN

<u>ITEM</u>	<u>QUANTITY</u>	<u>WEIGHT (APPROX)</u>
ROCKET, 2.75", BOXED - 288 BOXES	-----	40,608 LBS
DUNNAGE	-----	342 LBS
TOTAL WEIGHT	-----	40,950 LBS

TYPICAL LOAD IN A TRAILER HAVING 30'-4-1/2' TO 37'-8' BETWEEN ADJUSTABLE BULKHEADS

NOTE ■:

ADDITIONAL VERTICAL PIECES WILL BE ADDED, IF REQUIRED, AND THE SPACING ADJUSTED AS NECESSARY, SO THAT AT LEAST ONE JOINT ON EACH ROW OF BOXES IS CAPTURED. ADDITIONAL VERTICAL PIECES WILL BE BRACED WITH ADDITIONAL STRUTS OR SOLID FILL, AS APPROPRIATE.



VERTICAL PIECE, 2" X 6" BY LOAD HEIGHT PLUS 3" (MINIMUM OF 4 REQUIRED). SEE "NOTE ■" ABOVE.

LATERAL PIECE, 2" X 6" BY TRAILER WIDTH MINUS 1/2" (3 REQD). NAIL TO THE VERTICAL PIECE W/3-10d NAILS AT EACH JOINT.

TOP PIECE, 2" X 4" BY TRAILER WIDTH MINUS 1/2" (1 REQD).

GATE ASSEMBLY A

CLEAT, 2" X 4" X 12" (2 REQD). NAIL TO THE VERTICAL PIECE W/4-10d NAILS.

TRAILER WIDTH MINUS 1/2"

BEARING PIECE, 2" X 6" BY TRAILER WIDTH MINUS 1/2" (3 REQD). NAIL TO THE VERTICAL PIECE W/3-10d NAILS AT EACH JOINT AND TO THE TOP PIECE W/1-10d NAIL EVERY 8".

VERTICAL PIECE, 2" X 4" BY LOAD HEIGHT MINUS 2-1/2" (2 REQD).

FILLER PIECE, 2" X 6" BY CUT TO FIT (4 REQD). NAIL TO THE BEARING PIECE W/4-10d NAILS.

20"

LOAD HEIGHT MINUS 1"

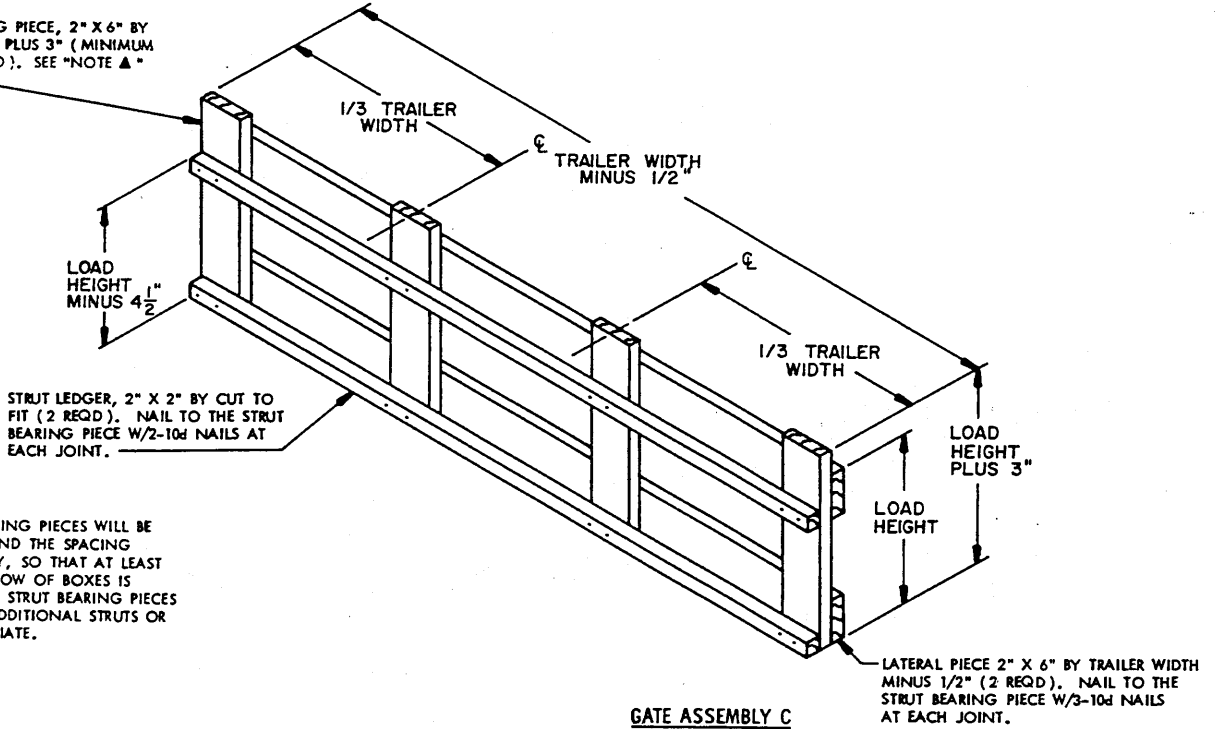
FILLER PIECE, 2" X 6" BY CUT TO FIT (2 REQD). NAIL TO THE BEARING PIECE W/5-10d NAILS.

ONE HALF LOAD HEIGHT

20"

GATE ASSEMBLY B

STRUT BEARING PIECE, 2" X 6" BY LOAD HEIGHT PLUS 3" (MINIMUM OF 4 REQUIRED). SEE "NOTE ▲" BELOW.



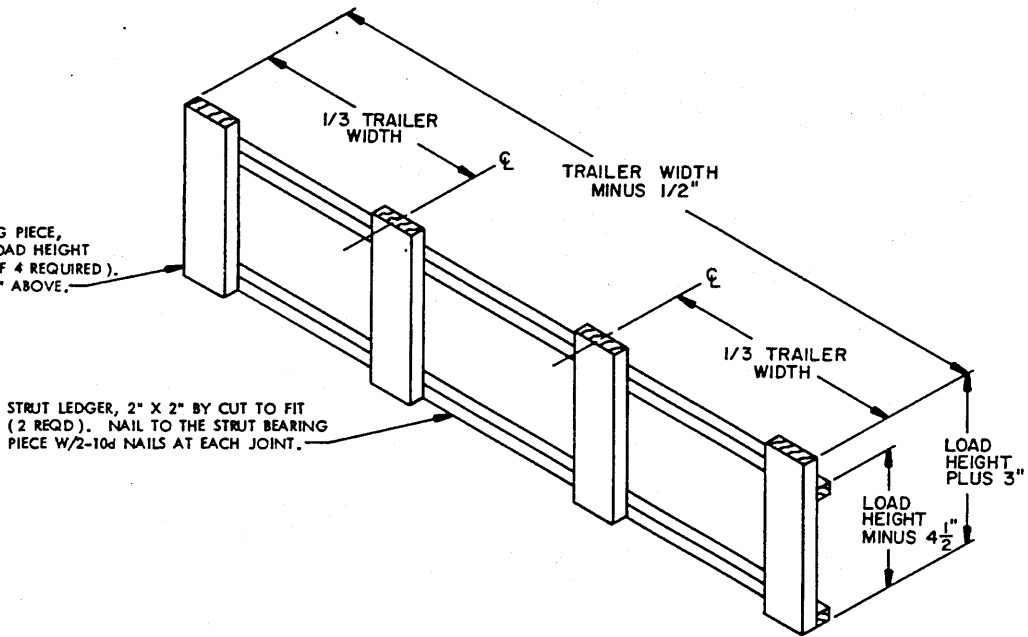
STRUT LEDGER, 2" X 2" BY CUT TO FIT (2 REQD). NAIL TO THE STRUT BEARING PIECE W/2-10d NAILS AT EACH JOINT.

NOTE ▲:

ADDITIONAL STRUT BEARING PIECES WILL BE ADDED, IF REQUIRED, AND THE SPACING ADJUSTED AS NECESSARY, SO THAT AT LEAST ONE JOINT ON EACH ROW OF BOXES IS CAPTURED. ADDITIONAL STRUT BEARING PIECES WILL BE BRACED WITH ADDITIONAL STRUTS OR SOLID FILL, AS APPROPRIATE.

GATE ASSEMBLY C

STRUT BEARING PIECE, 2" X 6" BY LOAD HEIGHT (MINIMUM OF 4 REQUIRED). SEE "NOTE ▲" ABOVE.

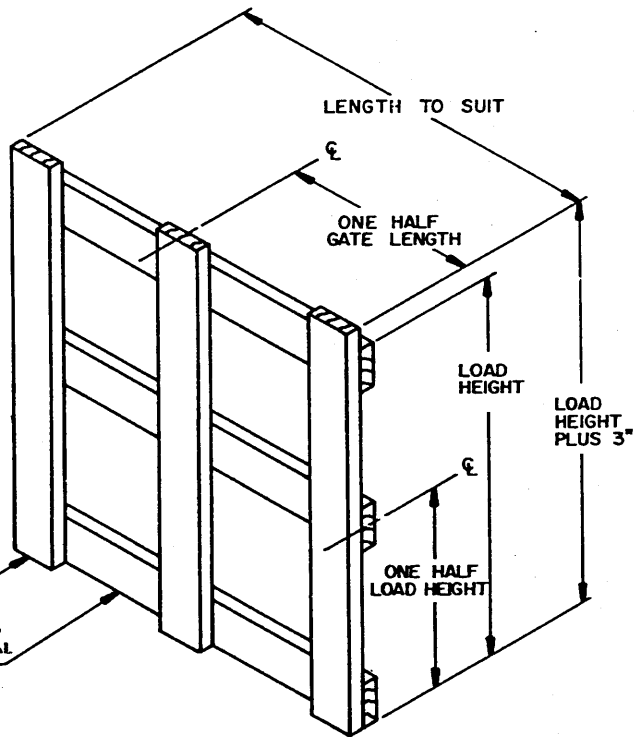


STRUT LEDGER, 2" X 2" BY CUT TO FIT (2 REQD). NAIL TO THE STRUT BEARING PIECE W/2-10d NAILS AT EACH JOINT.

GATE ASSEMBLY D

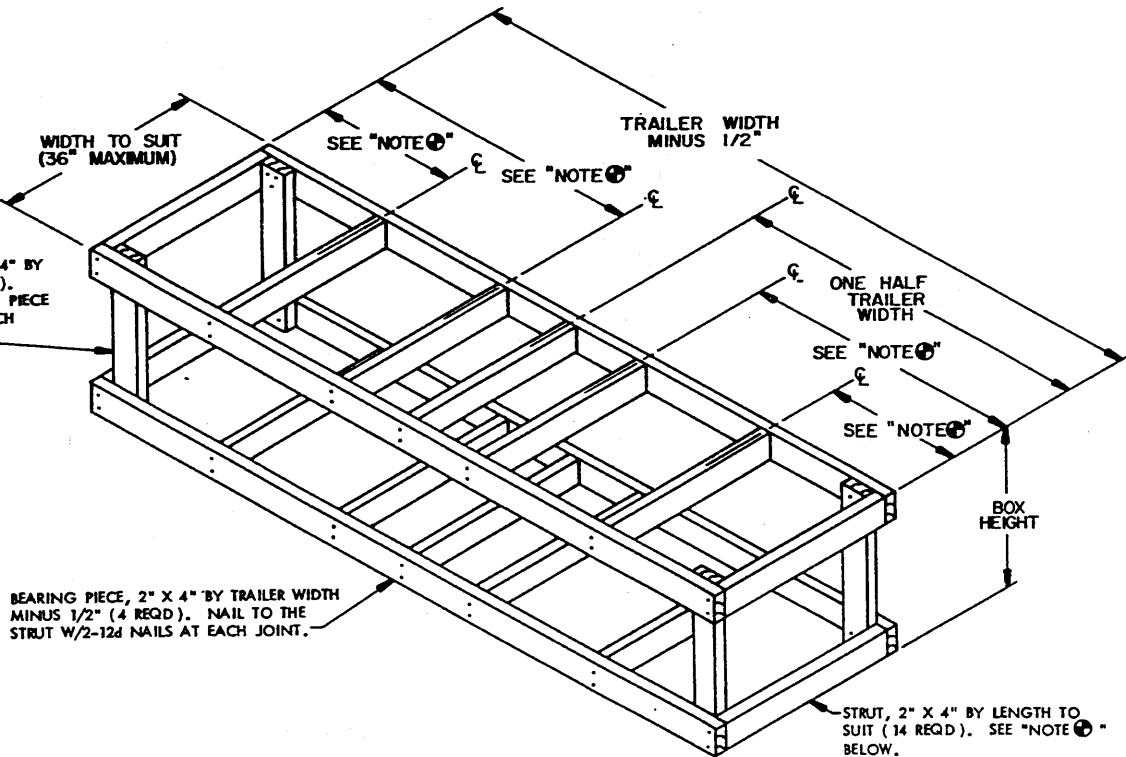
VERTICAL PIECE, 2" X 6" BY LOAD HEIGHT PLUS 3" (MINIMUM OF 3 REQUIRED). ADDITIONAL VERTICAL PIECES WILL BE ADDED, IF REQUIRED, AND THE SPACING ADJUSTED AS NECESSARY, SO THAT AT LEAST ONE JOINT ON EACH ROW OF BOXES IS CAPTURED. ADDITIONAL VERTICAL PIECES WILL BE BRACED WITH ADDITIONAL STRUTS OR SOLID FILL, AS APPROPRIATE.

LATERAL PIECE, 2" X 6" BY LENGTH TO SUIT (3 REQD.). NAIL TO THE VERTICAL PIECE W/3-10d NAILS AT EACH JOINT.



GATE ASSEMBLY E

VERTICAL PIECE, 2" X 4" BY BOX HEIGHT (4 REQD.). NAIL TO THE BEARING PIECE W/3-10d NAILS AT EACH JOINT.



BEARING PIECE, 2" X 4" BY TRAILER WIDTH MINUS 1/2" (4 REQD.). NAIL TO THE STRUT W/2-12d NAILS AT EACH JOINT.

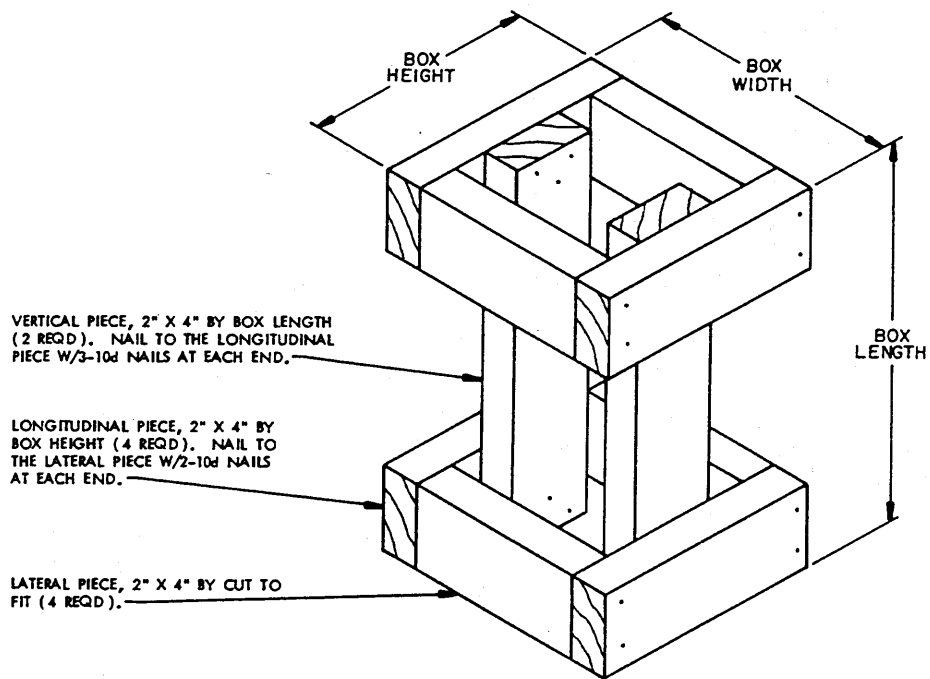
STRUT, 2" X 4" BY LENGTH TO SUIT (14 REQD.). SEE "NOTE" BELOW.

FILLER ASSEMBLY A

TO BE USED ONLY IN THE TOP LAYER OF A LOAD.

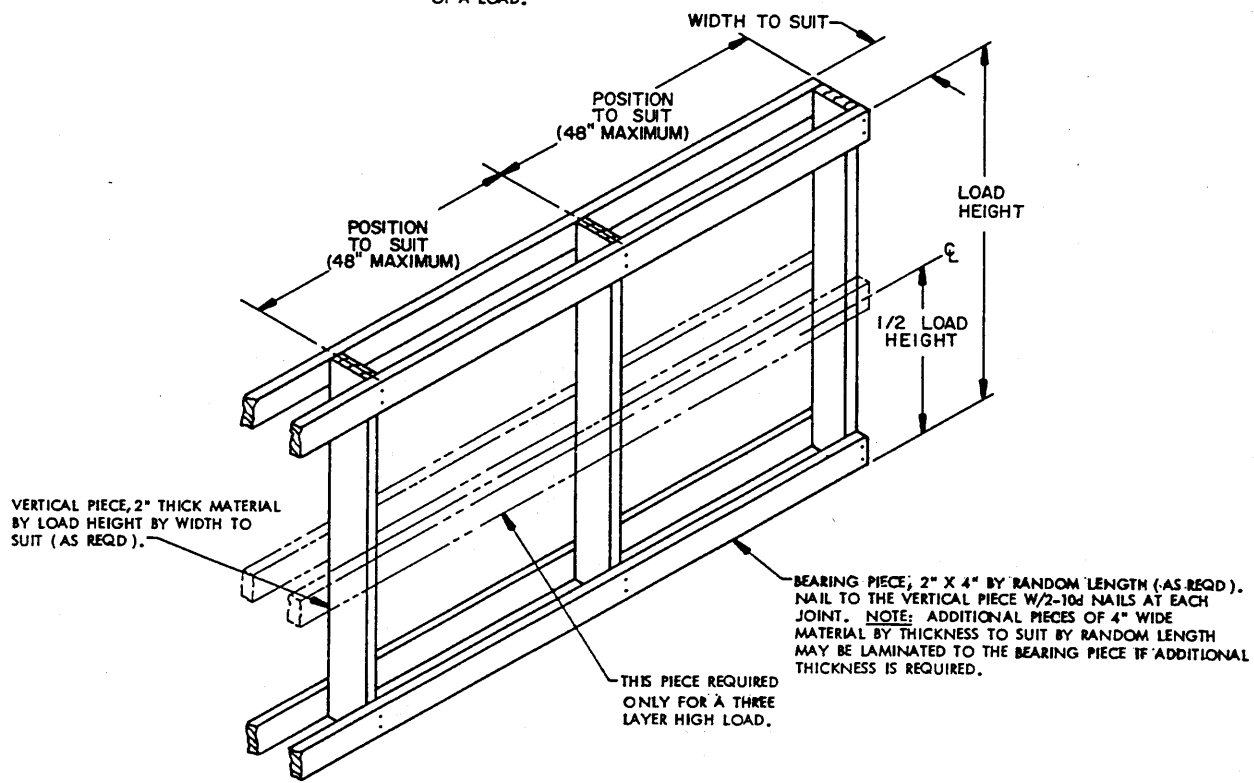
NOTE **E** :

POSITION STRUTS TO CENTER ON BOX JOINTS IN SUCH A MANNER THAT ALL BOXES WILL BE RETAINED.



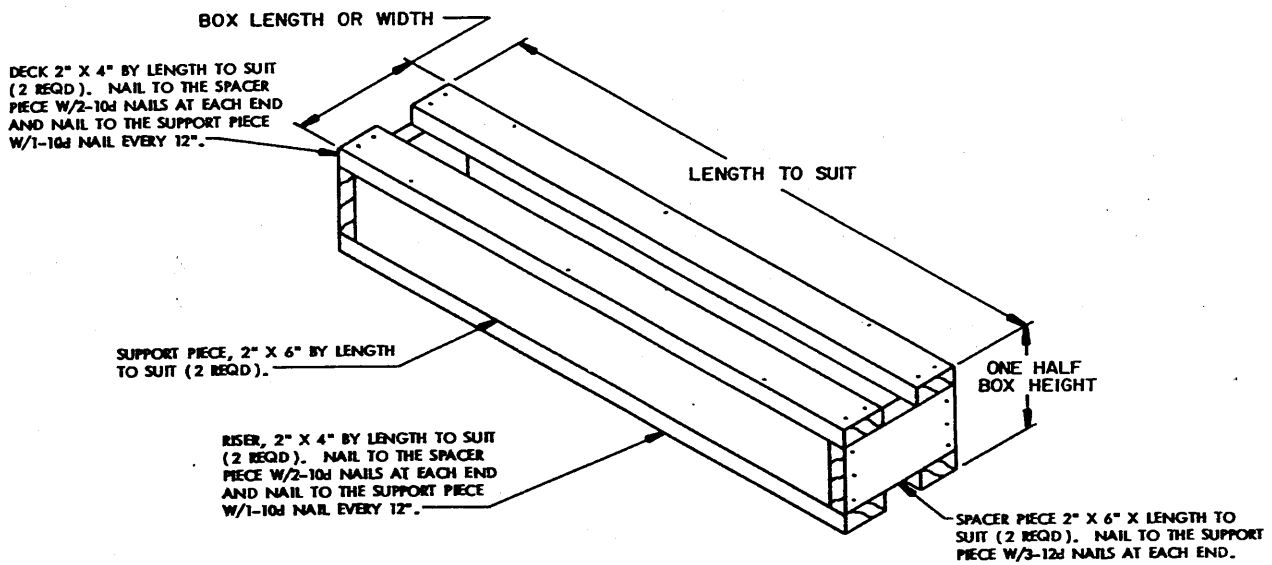
FILLER ASSEMBLY B

TO BE USED ONLY IN THE TOP LAYER OF A LOAD.

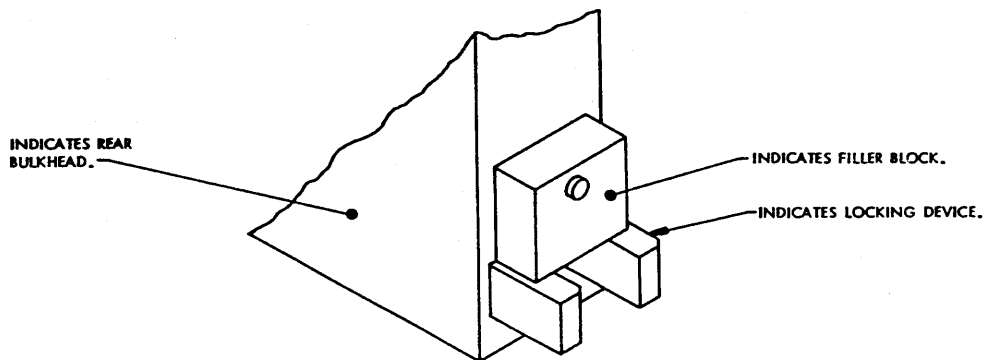


SPACER ASSEMBLY A

DETAILS



RISER ASSEMBLY A



FILLER BLOCK DETAIL

INSTALLED BY THE CARRIER TO PREVENT SIDESWAY OF THE CAMUS III REAR BULKHEAD AND RESULTANT DISENGAGEMENT OF THE LOCKING PINS.