

STORAGE IN 60' & 80' IGLOO AND 80' STRADLEY MAGAZINES OF CBU* ITEMS PACKED IN SKIDDED WOOD CONTAINERS

INDEX

ITEM	PAGE(S)
GENERAL NOTES -----	3
IGLOO STORAGE PROCEDURES (SMALL CONTAINER)-----	2,3
STRADLEY STORAGE PROCEDURES (SMALL CONTAINER)-----	4,5
IGLOO STORAGE PROCEDURES (LARGE CONTAINER)-----	6,7
STRADLEY STORAGE PROCEDURES (LARGE CONTAINER)-----	8,9

*RELOAD KITS FOR CBU 42/A MUNITIONS

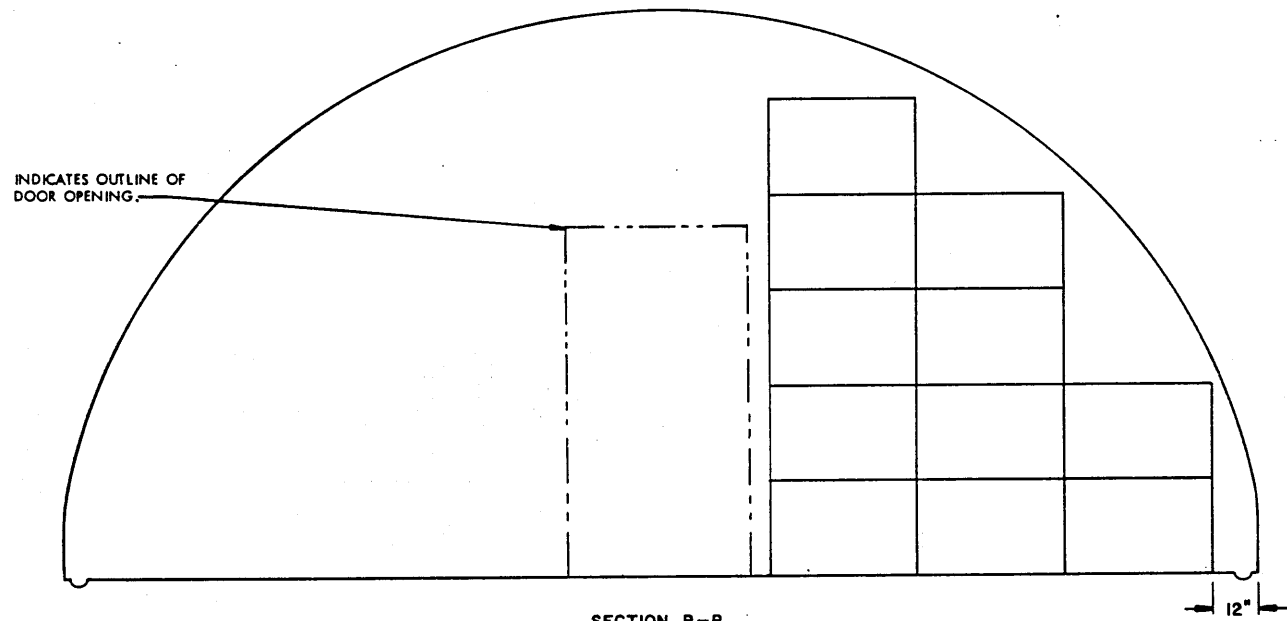
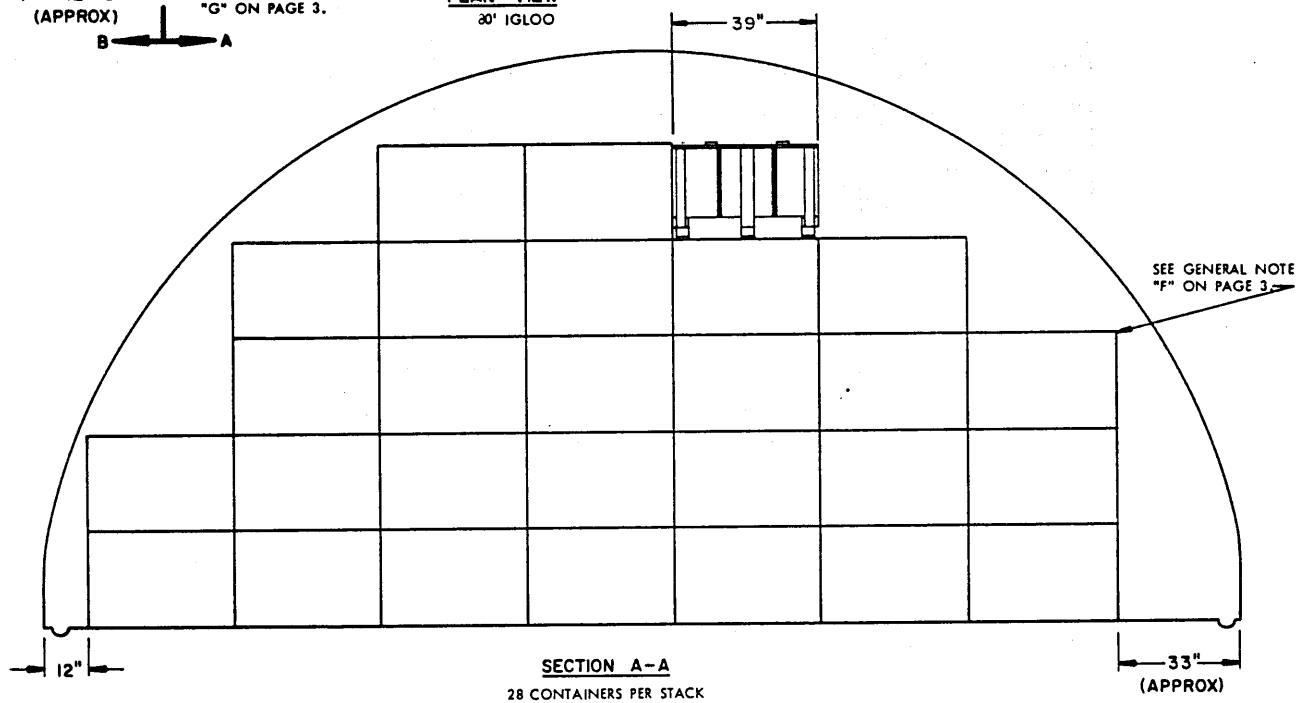
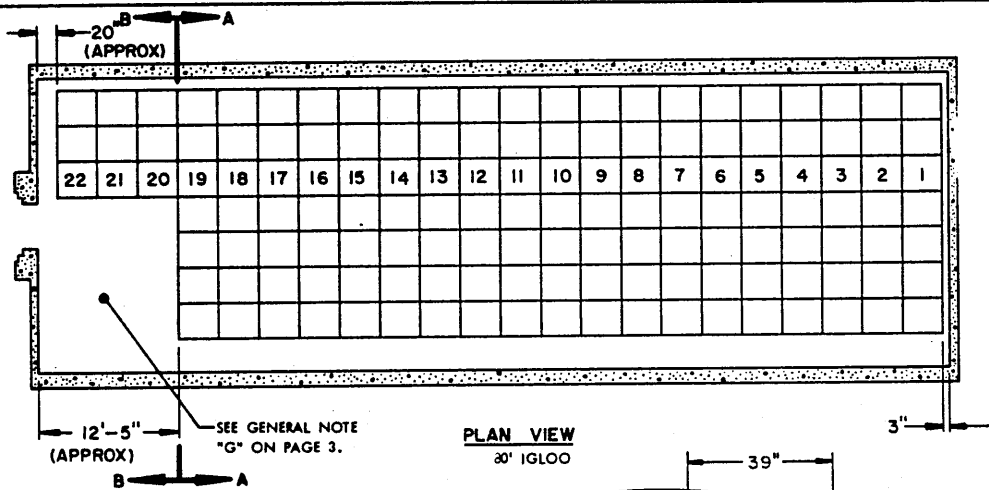
DRAWN BY <i>WMP</i>	PROJ ENG <i>MWD/ELW</i>	APSA SPEC <i>C. H. H.</i>	SUBMITTED <i>[Signature]</i>
CHECKED <i>T. S. R.</i>	ANC AMMO CTR <i>[Signature]</i>		COMMANDING OFFICER, SAVANNAH ARMY DEPOT
REVISIONS			EXAMINED AND APPROVED <i>[Signature]</i> AMMUNITION PROCUREMENT & SUPPLY AGENCY
			APPROVED BY ORDER OF COMMANDING GENERAL U. S. ARMY MATERIEL COMMAND <i>[Signature]</i>
			U. S. ARMY MATERIEL COMMAND
			25 OCTOBER 1970
			CLASS DIVISION DRAWING FILE
			19 48 4026 I-14A2

DO NOT SCALE

STORAGE AS SHOWN

80' IGLOO

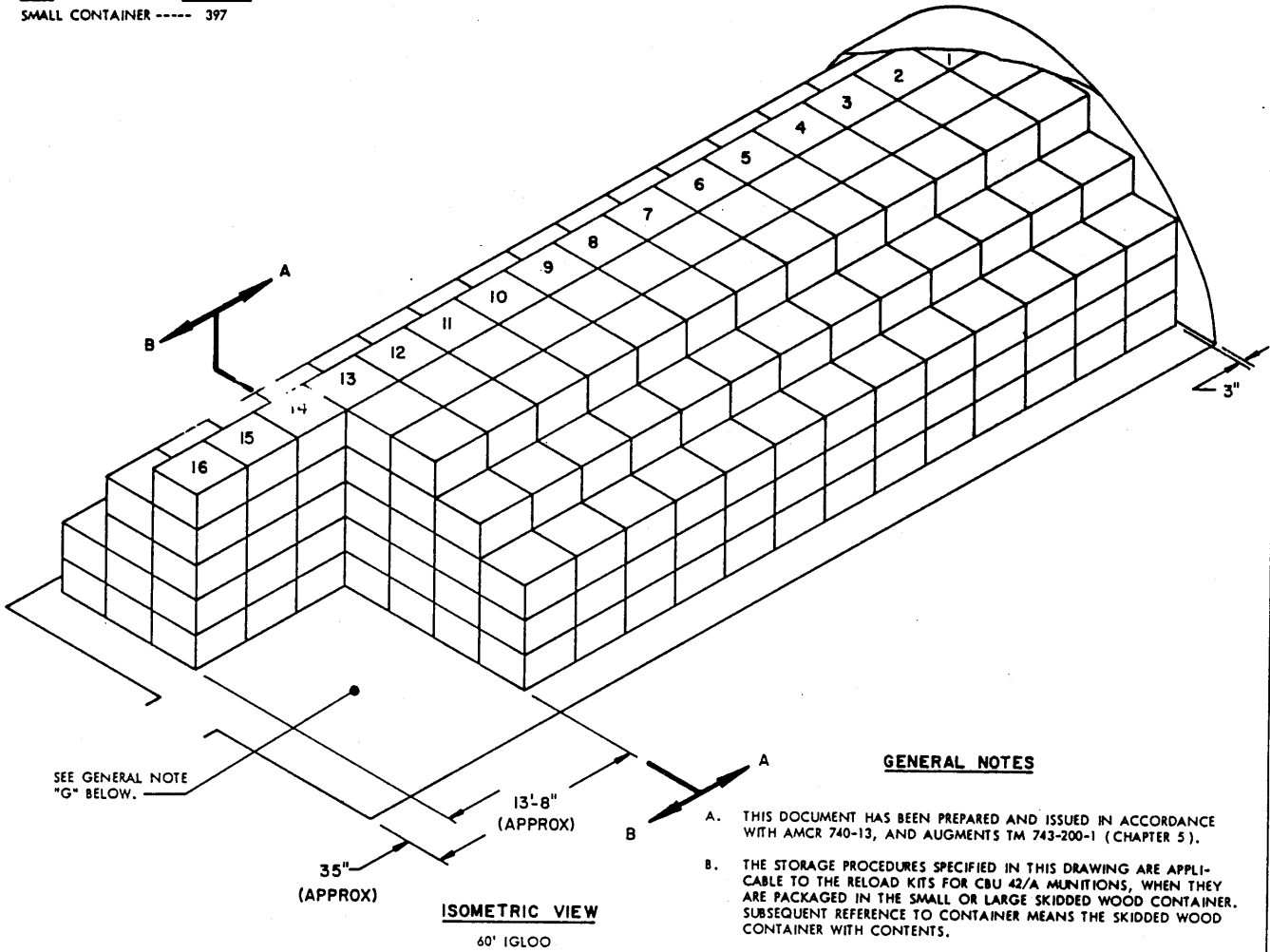
ITEM	QUANTITY
SMALL CONTAINER	565



STORAGE AS SHOWN

60' IGLOO

ITEM **QUANTITY**
SMALL CONTAINER ----- 397

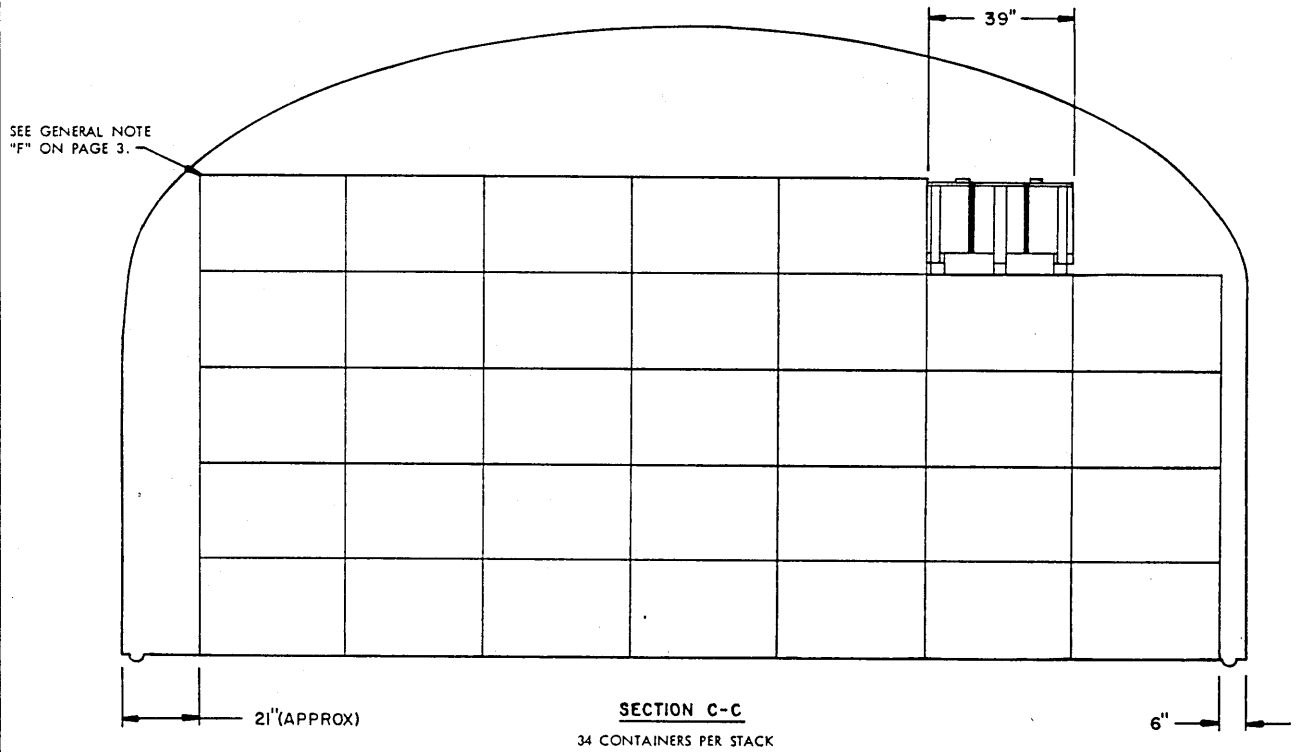
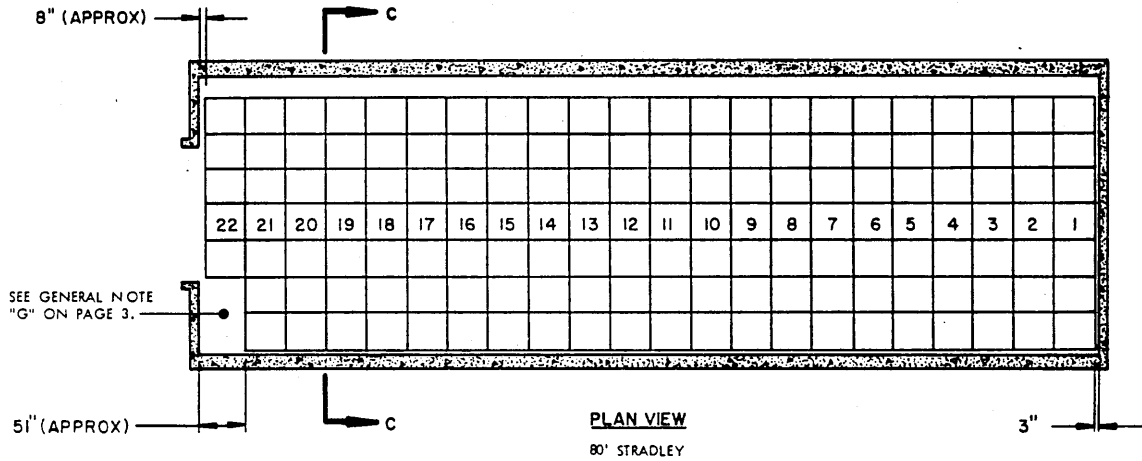


ISOMETRIC VIEW

60' IGLOO

GENERAL NOTES

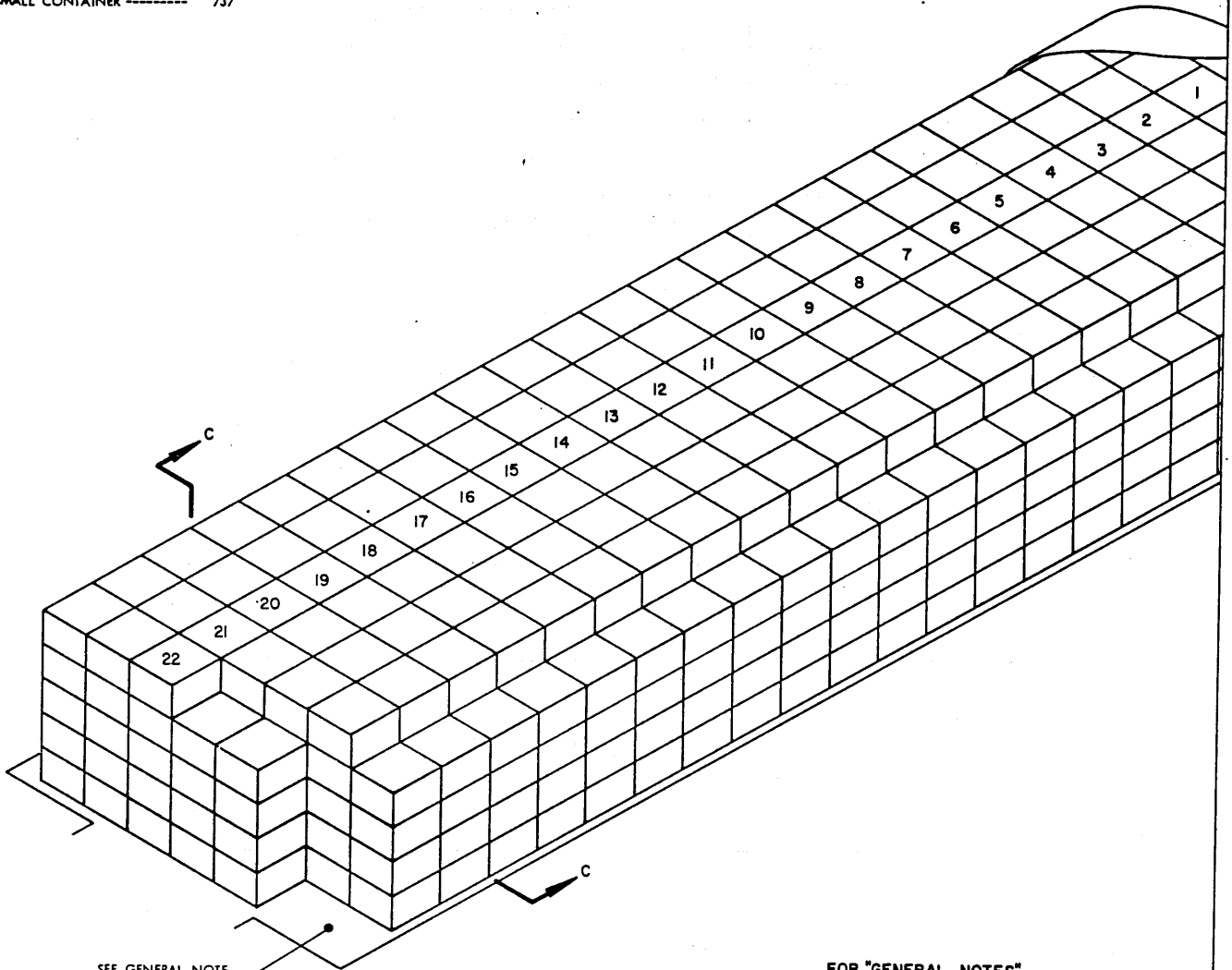
- A. THIS DOCUMENT HAS BEEN PREPARED AND ISSUED IN ACCORDANCE WITH AMCR 740-13, AND AUGMENTS TM 743-200-1 (CHAPTER 5).
- B. THE STORAGE PROCEDURES SPECIFIED IN THIS DRAWING ARE APPLICABLE TO THE RELOAD KITS FOR CBU 42/A MUNITIONS, WHEN THEY ARE PACKAGED IN THE SMALL OR LARGE SKIDDED WOOD CONTAINER. SUBSEQUENT REFERENCE TO CONTAINER MEANS THE SKIDDED WOOD CONTAINER WITH CONTENTS.
- C. FOR DETAILS OF THE SMALL CONTAINER, SEE DRAWING NO. 9248145.
 CONTAINER DIMENSIONS --- 43-1/8" LONG X 39" WIDE X 26-3/4" HIGH,
 GROSS WEIGHT ----- 950 POUNDS (APPROX).
- D. FOR DETAILS OF THE LARGE CONTAINER, SEE DRAWING NO. 9243143.
 CONTAINER DIMENSIONS --- 43-1/4" LONG X 43-1/2" WIDE X 28-3/4" HIGH,
 GROSS WEIGHT ----- 950 POUNDS (APPROX).
- E. **CAUTION:** CONTAINERS WILL NOT BE STACKED MORE THAN FIVE (5) HIGH. ALSO, LOTS WILL NOT BE MIXED WITHIN STORAGE STACKS, BUT ONLY TO THE EXTENT THAT ITEMS OF ONE LOT WILL NOT BE STACKED ON TOP OF ITEMS OF ANOTHER LOT.
- F. STORED CONTAINERS MUST NOT CONTACT THE WALL OF A MAGAZINE. TO PROVIDE FOR THIS MANDATORY CLEARANCE REQUIREMENT, CONTAINERS MAY BE ELIMINATED FROM A DEPICTED STORAGE PATTERN AS NECESSARY.
- G. THE QUANTITY OF CONTAINERS TO BE STORED MAY BE ADJUSTED TO SUIT LOCAL CONDITIONS AND/OR AVAILABLE MATERIALS HANDLING EQUIPMENT. IF THE AVAILABLE MHE PERMITS, ADDITIONAL CONTAINERS MAY BE STORED WITHIN THE FRONTAL AREA OF THE MAGAZINE.



STORAGE AS SHOWN

80' STRADLEY

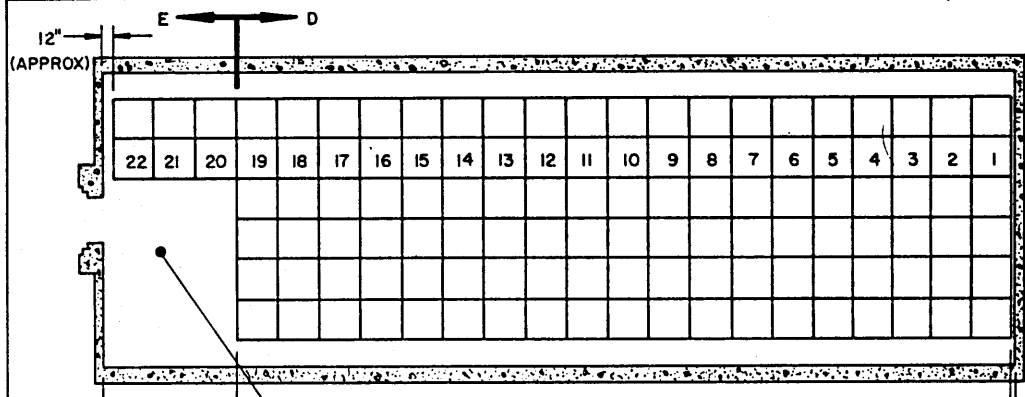
<u>ITEM</u>	<u>QUANTITY</u>
SMALL CONTAINER -----	737



SEE GENERAL NOTE
"G" ON PAGE 3.

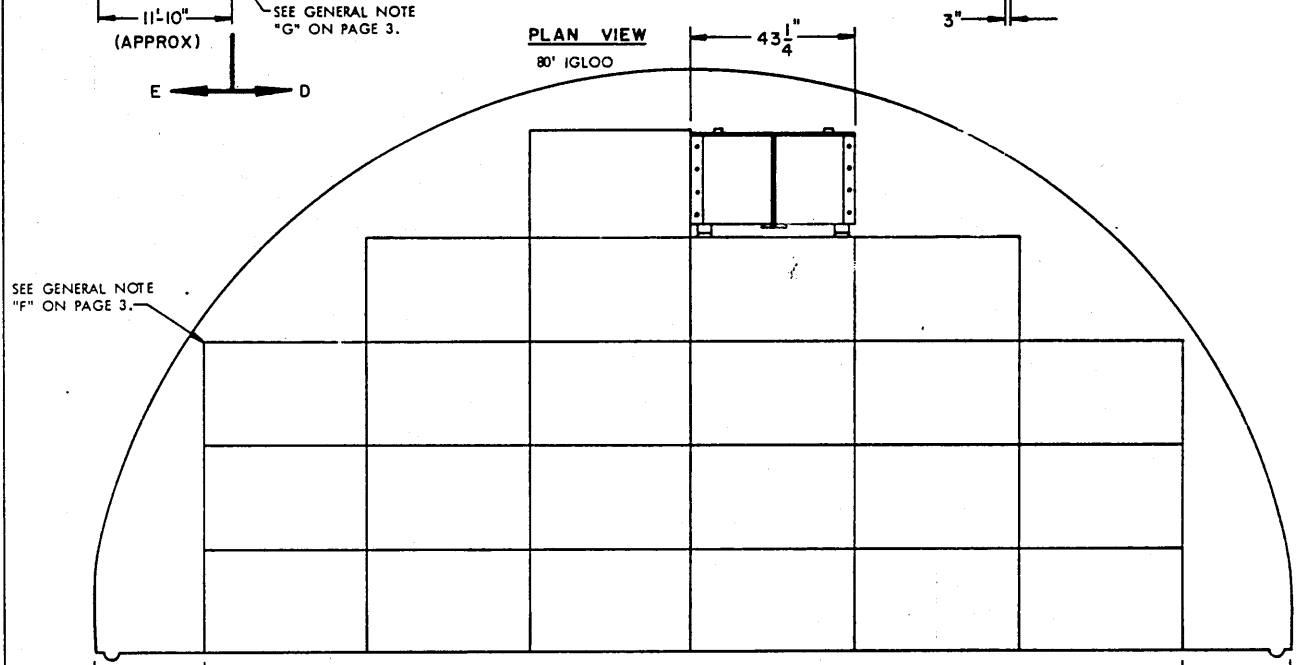
FOR "GENERAL NOTES",
SEE PAGE 3

ISOMETRIC VIEW
80' STRADLEY



STORAGE AS SHOWN
80' IGLOO

ITEM	QUANTITY
LARGE CONTAINER --	477



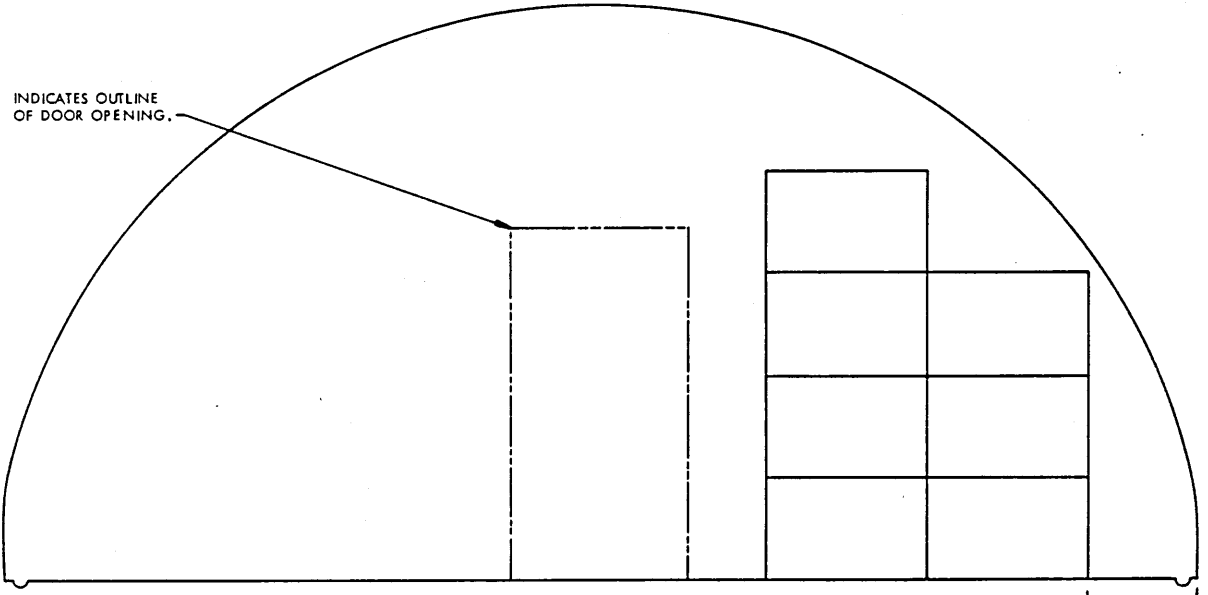
PLAN VIEW
 80' IGLOO

SECTION D-D
 24 CONTAINERS PER STACK

SEE GENERAL NOTE "F" ON PAGE 3.

29"

29" (APPROX)



INDICATES OUTLINE OF DOOR OPENING.

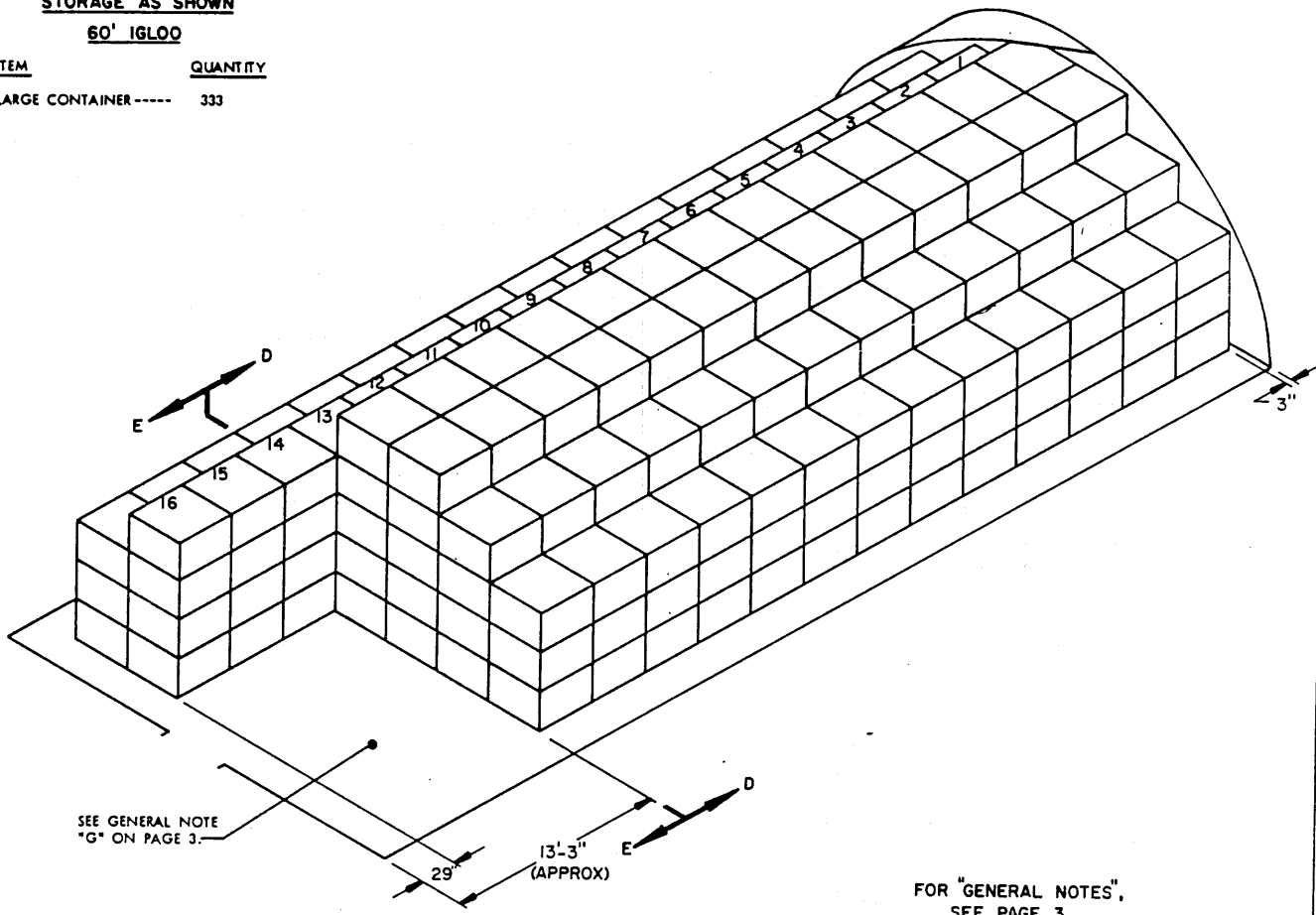
SECTION E-E
 7 CONTAINERS PER STACK

29"

STORAGE AS SHOWN

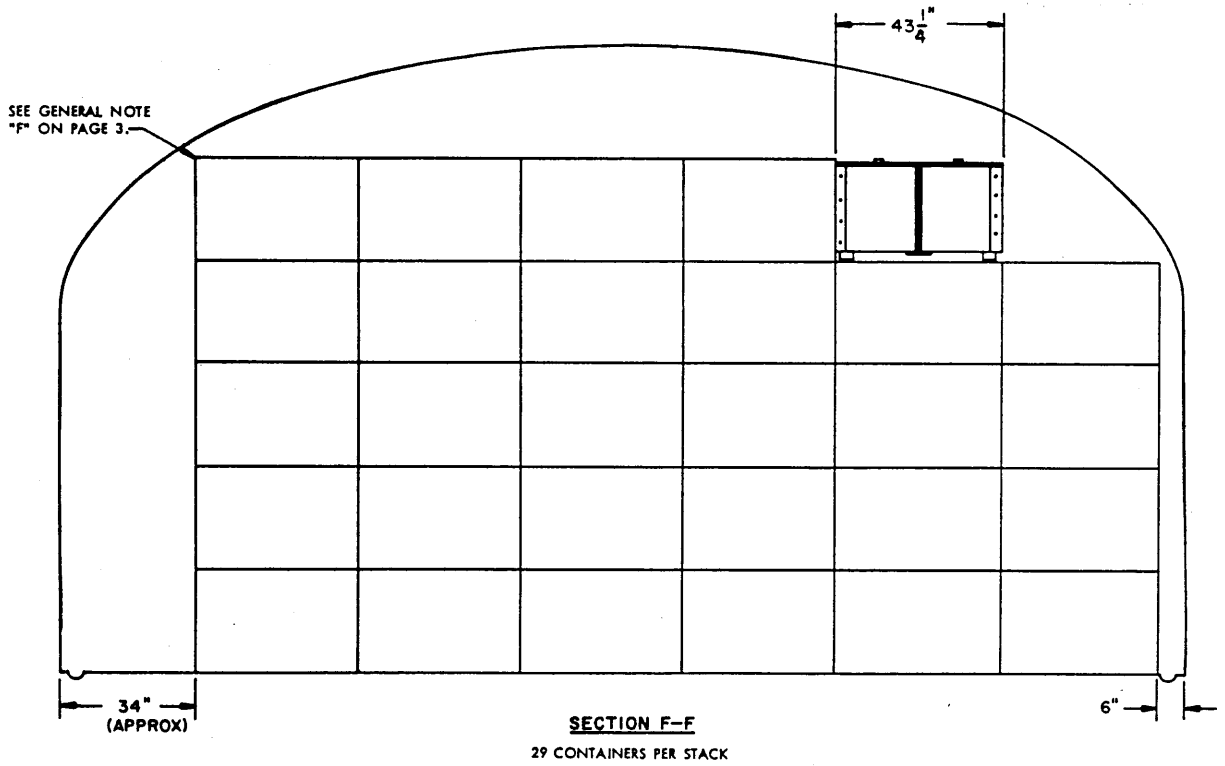
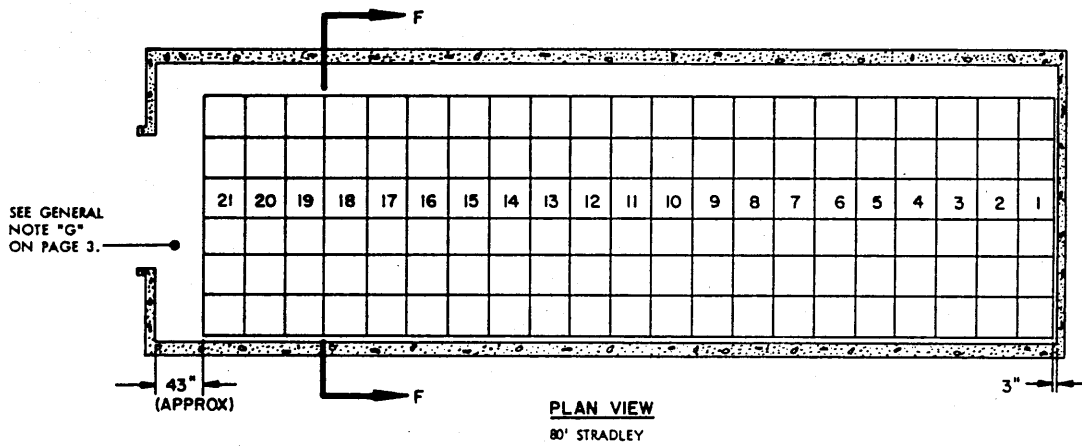
60' IGLOO

ITEM	QUANTITY
LARGE CONTAINER-----	333



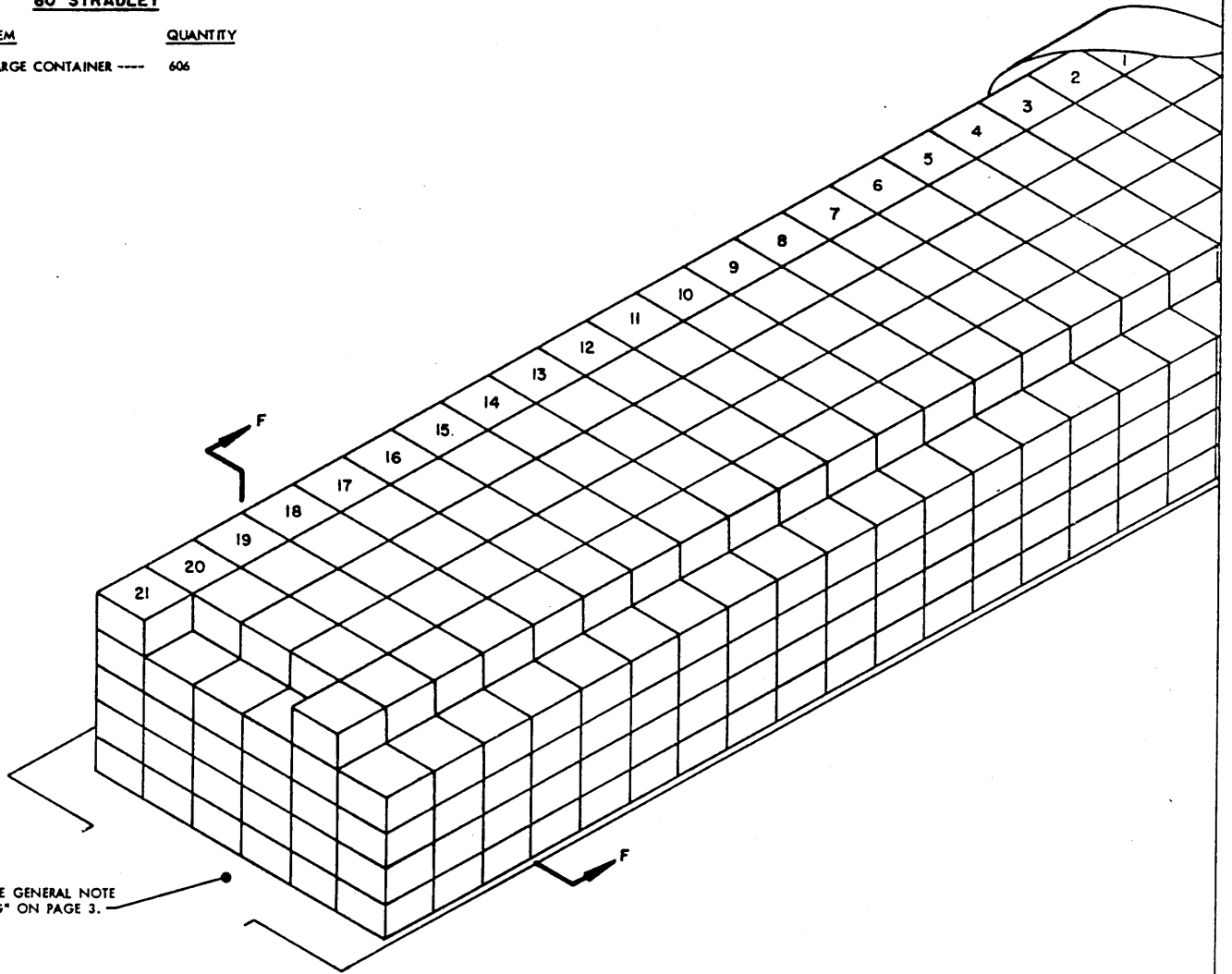
ISOMETRIC VIEW
60' IGLOO

FOR "GENERAL NOTES",
SEE PAGE 3



STORAGE AS SHOWN
80' STRADLEY

<u>ITEM</u>	<u>QUANTITY</u>
LARGE CONTAINER ----	606



SEE GENERAL NOTE
"G" ON PAGE 3.

ISOMETRIC VIEW
80' STRADLEY

**FOR "GENERAL NOTES",
SEE PAGE 3**

