

STORAGE IN 60' & 80' IGLOO AND 80' STRADLEY MAGAZINES OF 2.75 INCH ROCKET PACKED 25 PER PLYWOOD CLEATED BOX

INDEX

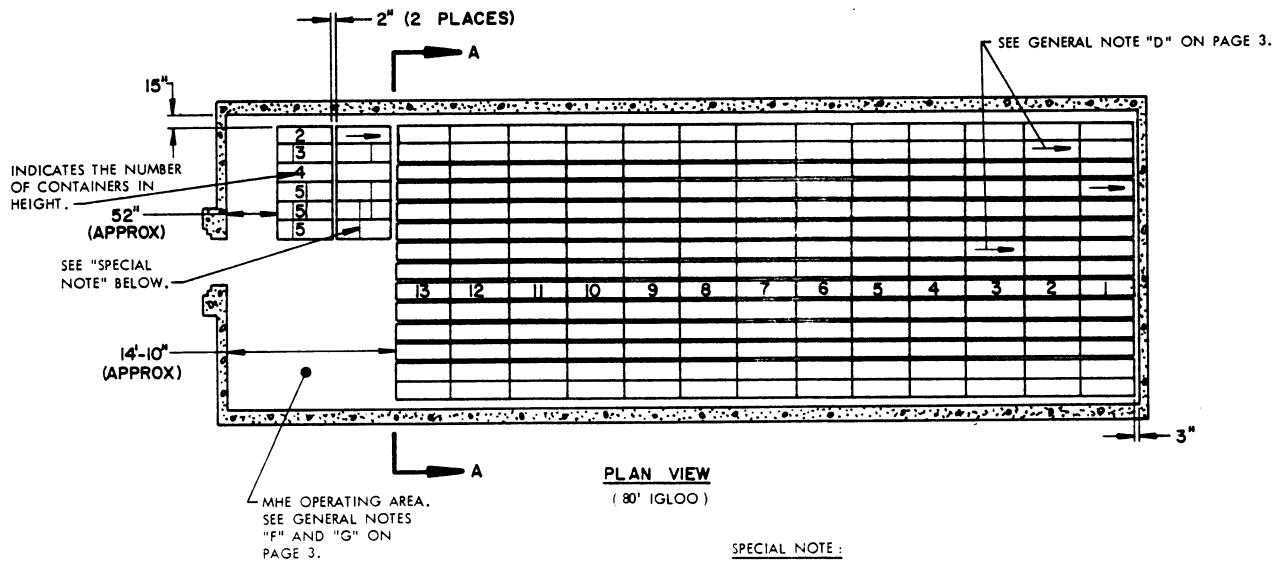
| ITEM | PAGE (S) |
|---|----------|
| GENERAL NOTES, AND MATERIAL SPECIFICATIONS----- | 3 |
| IGLOO STORAGE PROCEDURES----- | 2,3 |
| STRADLEY STORAGE PROCEDURES----- | 4,5 |
| STRADLEY STORAGE PROCEDURES (ALTERNATIVE METHOD)----- | 6,7 |
| DETAILS----- | 8 |

| | | | |
|----------------------------|---------------------------|-----------------|---|
| DRAFTSMAN A.P.S./H.M.W. | PROJ ENG M.W.D./K.W. | APSA S.M.C./ | SUBMITTED C.X. [Signature] Lt. Col C. |
| CHECKER T.R.S./R.R.K. | ASC AMMO CTR John Boyd | | COMMANDING OFFICER, SAVANNA ARMY DEPOT |
| REVISIONS | | | EXAMINED AND APPROVED S.G. Beiermann |
| | | | AMMUNITION PROCUREMENT & SUPPLY AGENCY |
| | | | APPROVED BY ORDER OF COMMANDING GENERAL, U. S. ARMY MATERIEL COMMAND |
| | | | [Signature] U. S. ARMY MATERIEL COMMAND |
| | | | JULY 1970 |
| | | | CLASS DIVISION DRAWING FILE |
| | | | 19 .48 4024 I-14 A I |

DO NOT SCALE

**STORAGE AS SHOWN
80' IGLOO**

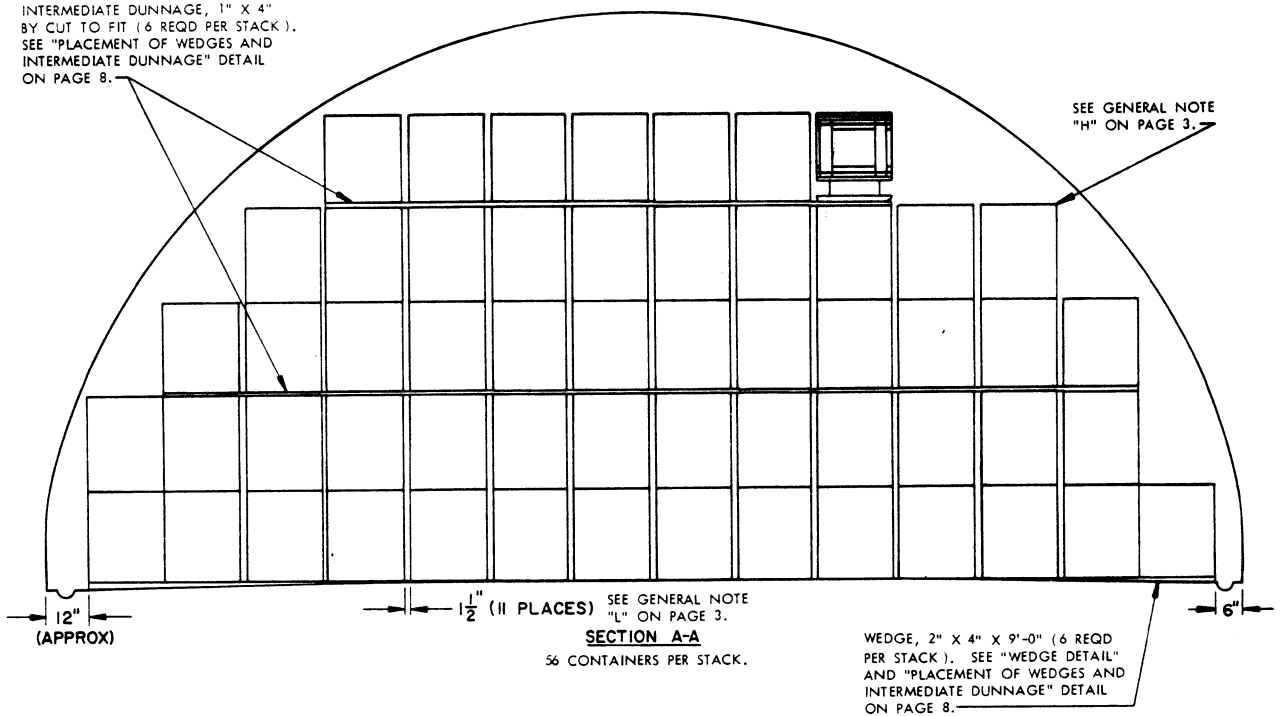
| ITEM | QUANTITY |
|------------------------|-------------|
| CONTAINER ----- | 776 |
| EXPLOSIVE WEIGHT ----- | 166,292 LBS |
| (SEE GENERAL NOTE "M") | |



SPECIAL NOTE:

THE TWO (2) PARTIAL STACKS IN THE FRONTAL AREA OF THE IGLOO MAGAZINE DO NOT CONTAIN INTERMEDIATE DUNNAGE. STACK STABILIZING STRAPS OF 3/4" X .028" X 12'-0" STEEL STRAPPING WILL BE INSTALLED AROUND THE THIRD AND FIFTH LAYER CONTAINERS OF TWO ADJACENT CONTAINER STACKS. ONE (1) STRAP IS REQUIRED FOR EACH DOUBLE STACK AS SHOWN, IN LIEU OF THE INTERMEDIATE DUNNAGE. SEAL THE LAP JOINT OF THE STRAPPING WITH ONE (1) STRAP SEAL. ALSO, THREE (3) 9'-0" WEDGES ARE REQUIRED FOR EACH OF THESE PARTIAL STACKS.

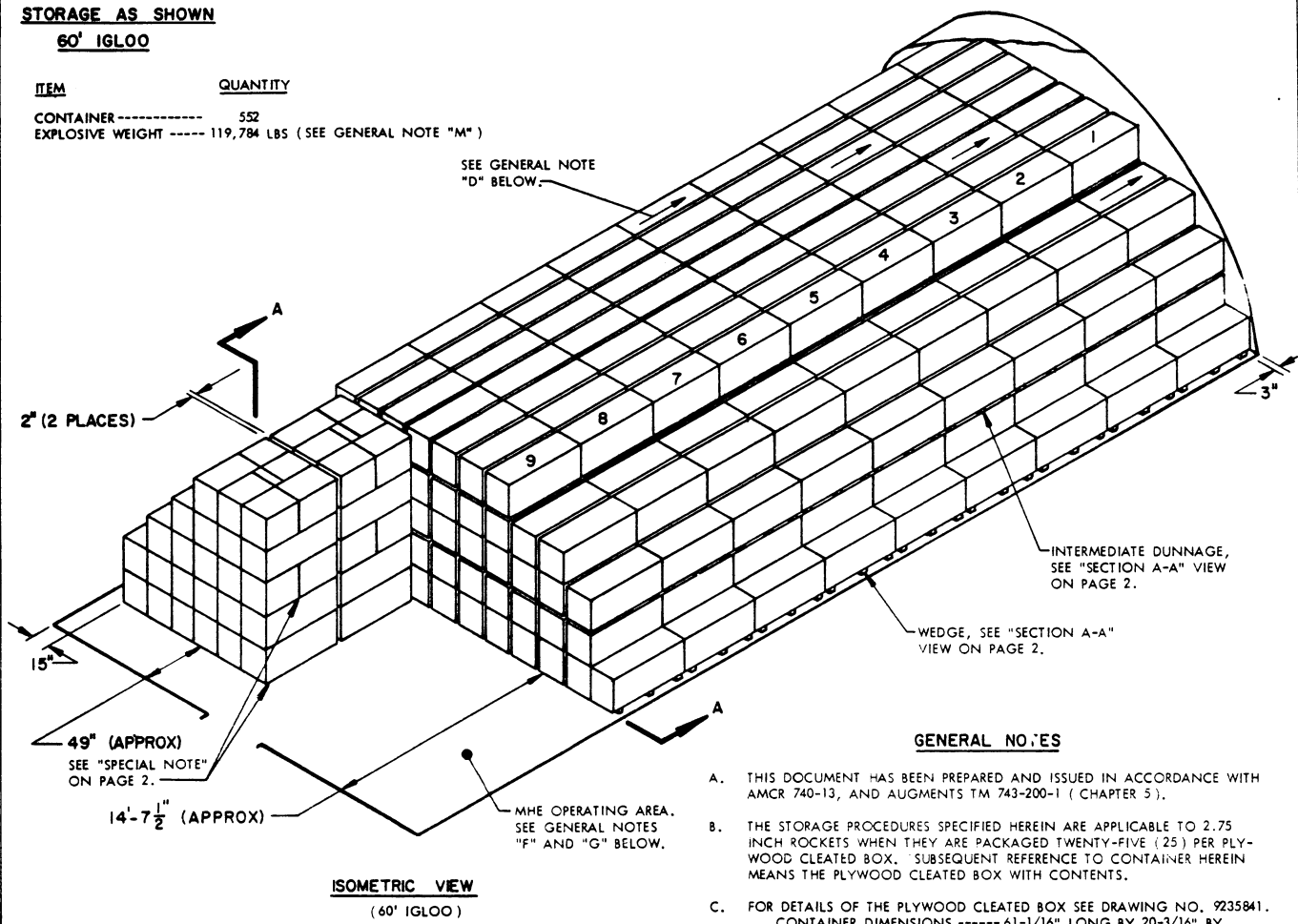
INTERMEDIATE DUNNAGE, 1" X 4" BY CUT TO FIT (6 REQD PER STACK). SEE "PLACEMENT OF WEDGES AND INTERMEDIATE DUNNAGE" DETAIL ON PAGE 8.



STORAGE AS SHOWN

60' IGLOO

| ITEM | QUANTITY |
|------------------------|------------------------------------|
| CONTAINER ----- | 552 |
| EXPLOSIVE WEIGHT ----- | 119,784 LBS (SEE GENERAL NOTE "M") |



ISOMETRIC VIEW
(60' IGLOO)

(GENERAL NOTES CONTINUED)

M. THE DESIGNATED "EXPLOSIVE WEIGHT" IS APPLICABLE ONLY TO ONE OF THE ROCKETS COVERED BY THIS DOCUMENT. EXPLOSIVE WEIGHT PER MAGAZINE MAY VARY AS DIFFERENT 2.75" ROCKETS ARE STORED.

| BILL OF MATERIAL (PER STACK) | | |
|------------------------------|-------------|------------|
| LUMBER | LINEAR FEET | BOARD FEET |
| 1" X 4" | 102-1,2 | 34 |
| WEDGE ----- | 2'-0" | 6 REQD |

MATERIAL SPECIFICATIONS

LUMBER ----- : SEE TM 743-200-1, DUNNAGE LUMBER, FED SPEC MM-L-751.

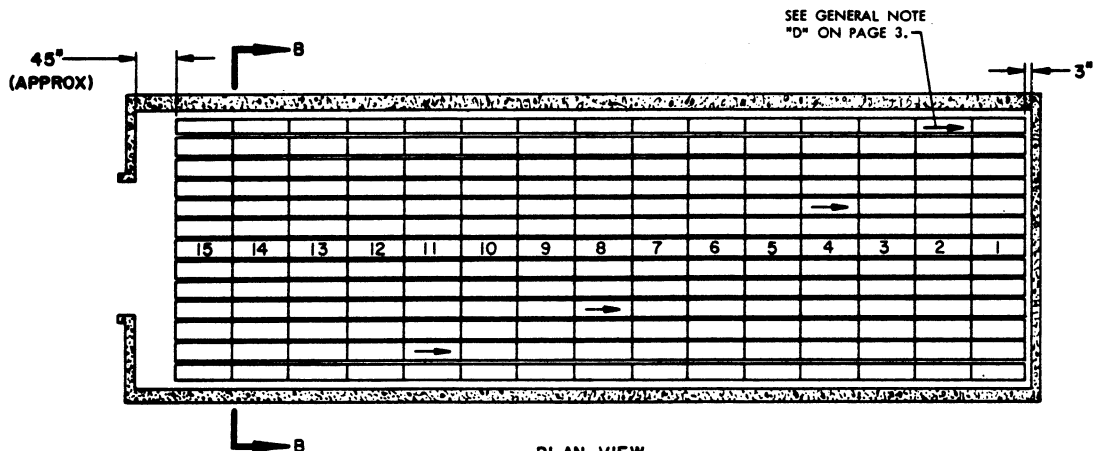
STRAPPING, STEEL ----- : TYPE I OR IV, CLASS A OR B, FED SPEC QQ-5-781.

STRAP SEAL ----- : COMMERCIAL GRADE.

GENERAL NOTES

- A. THIS DOCUMENT HAS BEEN PREPARED AND ISSUED IN ACCORDANCE WITH AMCR 740-13, AND AUGMENTS TM 743-200-1 (CHAPTER 5).
- B. THE STORAGE PROCEDURES SPECIFIED HEREIN ARE APPLICABLE TO 2.75 INCH ROCKETS WHEN THEY ARE PACKAGED TWENTY-FIVE (25) PER PLYWOOD CLEATED BOX. SUBSEQUENT REFERENCE TO CONTAINER HEREIN MEANS THE PLYWOOD CLEATED BOX WITH CONTENTS.
- C. FOR DETAILS OF THE PLYWOOD CLEATED BOX SEE DRAWING NO. 9235841. CONTAINER DIMENSIONS ----- 61-1/16" LONG BY 20-3/16" BY 25-1/4" HIGH.
GROSS WEIGHT ----- 776 POUNDS (APPROX).
EXPLOSIVE WEIGHT ----- 217 POUNDS (SEE GENERAL NOTE "M").
CUBE ----- 18.0 CUBIC FEET.
- D. THIS ITEM IS QD CLASS 7, COMPATIBILITY GROUP F. CAUTION: THIS ITEM IS IN A "PROPULSIVE STATE" AND MUST BE STORED WITH THE FORWARD END FACING IN ONE DIRECTION (NOT TOWARD DOOR OF MAGAZINE) AS INDICATED BY THE DIRECTIONAL ARROWS ON THE STORAGE VIEWS.
- E. ITEM LOTS WILL NOT BE MIXED, BUT ONLY TO THE EXTENT THAT ITEMS OF ONE LOT WILL NOT BE STACKED ON TOP OF ITEMS FROM ANOTHER LOT.
- F. MATERIAL HANDLING EQUIPMENT (MHE) OPERATING AREA SHOWN HEREIN MAY BE ADJUSTED TO SUIT LOCAL CONDITIONS AND/OR AVAILABLE MHE.
- G. IF THE AVAILABLE MHE PERMITS, ADDITIONAL CONTAINERS MAY BE STORED WITHIN THE FRONTAL AREA OF A MAGAZINE.
- H. STORED CONTAINERS MUST NOT CONTACT THE WALL OF A MAGAZINE. TO PROVIDE FOR THIS MANDATORY CLEARANCE REQUIREMENT, CONTAINERS MAY BE ELIMINATED FROM THE DEPICTED STACKING PATTERN AS NECESSARY.
- J. CAUTION: THE ALLOWABLE "EXPLOSIVE LIMIT" ESTABLISHED FOR A MAGAZINE IS NOT TO BE EXCEEDED. DEPENDING ON THE ITEM BEING STORED, THIS LIMITATION MAY REQUIRE A QUANTITY REDUCTION FROM THE STORAGE AS SHOWN.
- K. TWO (2) STORAGE METHODS ARE SPECIFIED FOR STRADLEY MAGAZINES HEREIN. THE METHOD WHICH BEST SUITS PREVAILING CONDITIONS SHOULD BE SELECTED. LOCAL OPERATING OFFICIALS ARE RESPONSIBLE FOR THIS SELECTION.
- L. THE ONE AND ONE-HALF INCH (1-1/2") SPACE BETWEEN ROWS, IN THE STORAGE VIEWS ON PAGES 2 THROUGH 5, IS REQUIRED FOR CLEARANCE OF THE TINES OF THE MHE. IF THE WIDTH OF EACH TINE IS THREE AND THREE-QUARTERS INCHES (3-3/4") OR LESS THE 1-1/2" SPACE MAY BE DISREGARDED AND THE CONTAINERS POSITIONED TOGETHER AS CLOSELY AS POSSIBLE. IF THE TINES OF MHE ARE GREATER THAN 3-3/4" THIS 1-1/2" SPACE IS REQUIRED FOR THE TINE CLEARANCE, WHEN STACKING CONTAINERS AND FOR WITHDRAWING THE TINES FROM THE STACK.

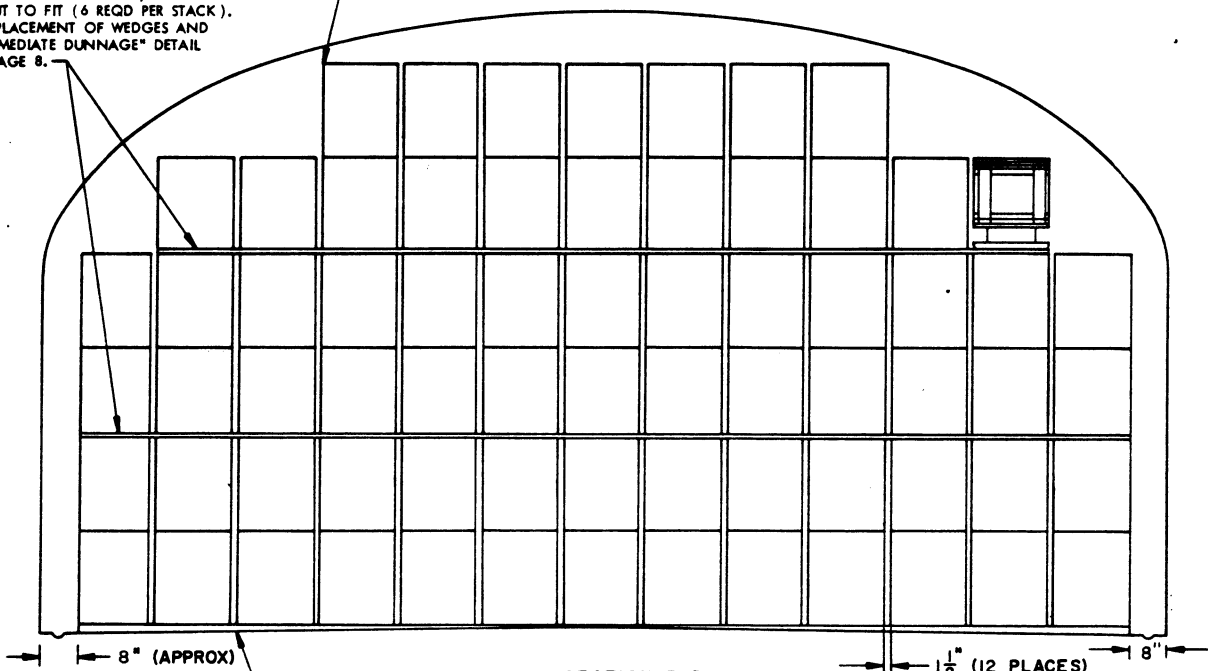
(GENERAL NOTES CONTINUED AT LEFT)



PLAN VIEW
(80' STRADLEY)

INTERMEDIATE DUNNAGE, 1" X 4" BY CUT TO FIT (6 REQD PER STACK). SEE "PLACEMENT OF WEDGES AND INTERMEDIATE DUNNAGE" DETAIL ON PAGE 8.

SEE GENERAL NOTE "H" ON PAGE 3.



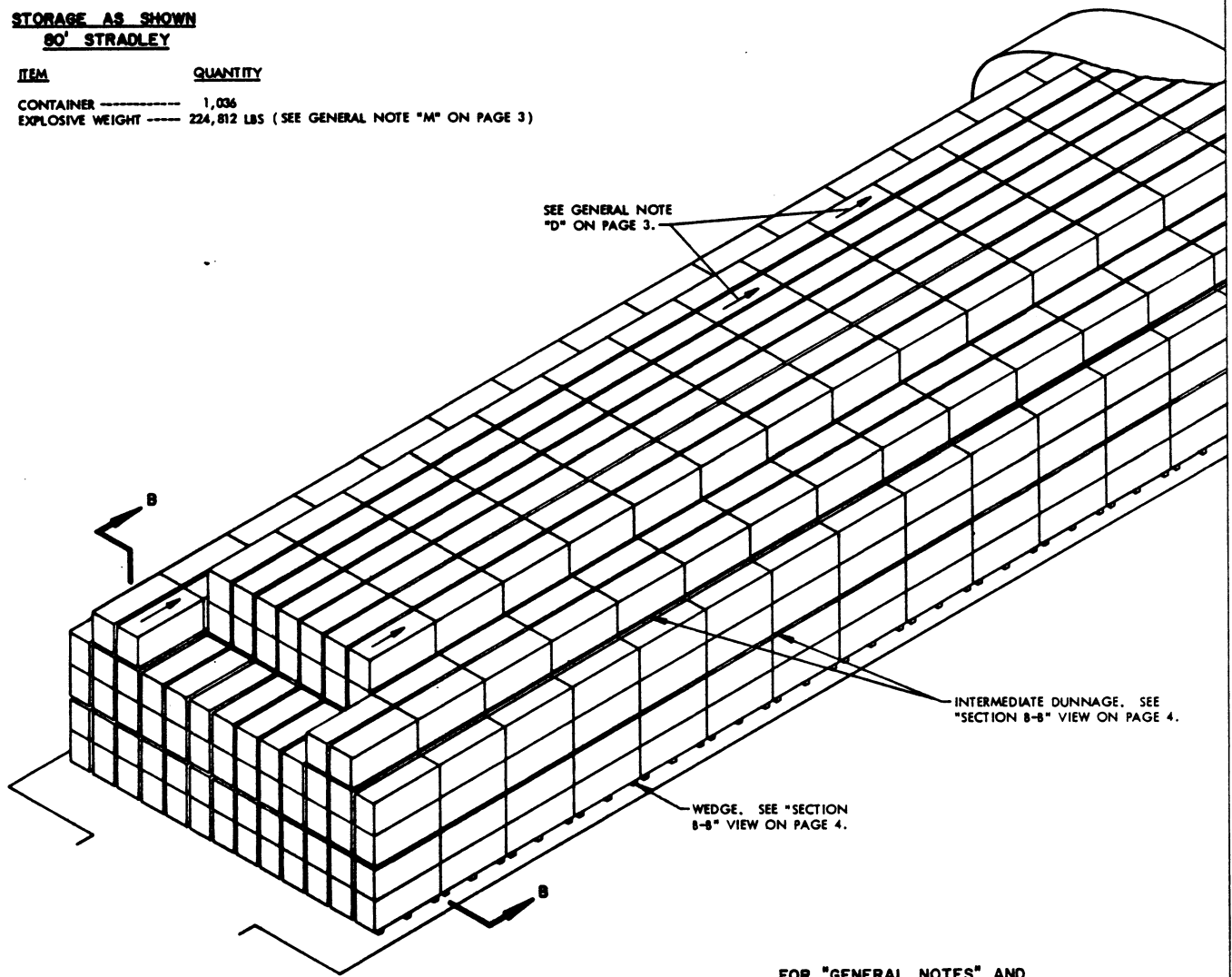
SECTION B-B
70 CONTAINERS PER STACK

WEDGE, 2" X 4" X 9'-0" (6 REQD PER STACK). SEE "WEDGE DETAIL" AND "PLACEMENT OF WEDGES AND INTERMEDIATE DUNNAGE" DETAIL ON PAGE 8.

1 1/2" (12 PLACES)
SEE GENERAL NOTE "L" ON PAGE 3.

STORAGE AS SHOWN
80' STRADLEY

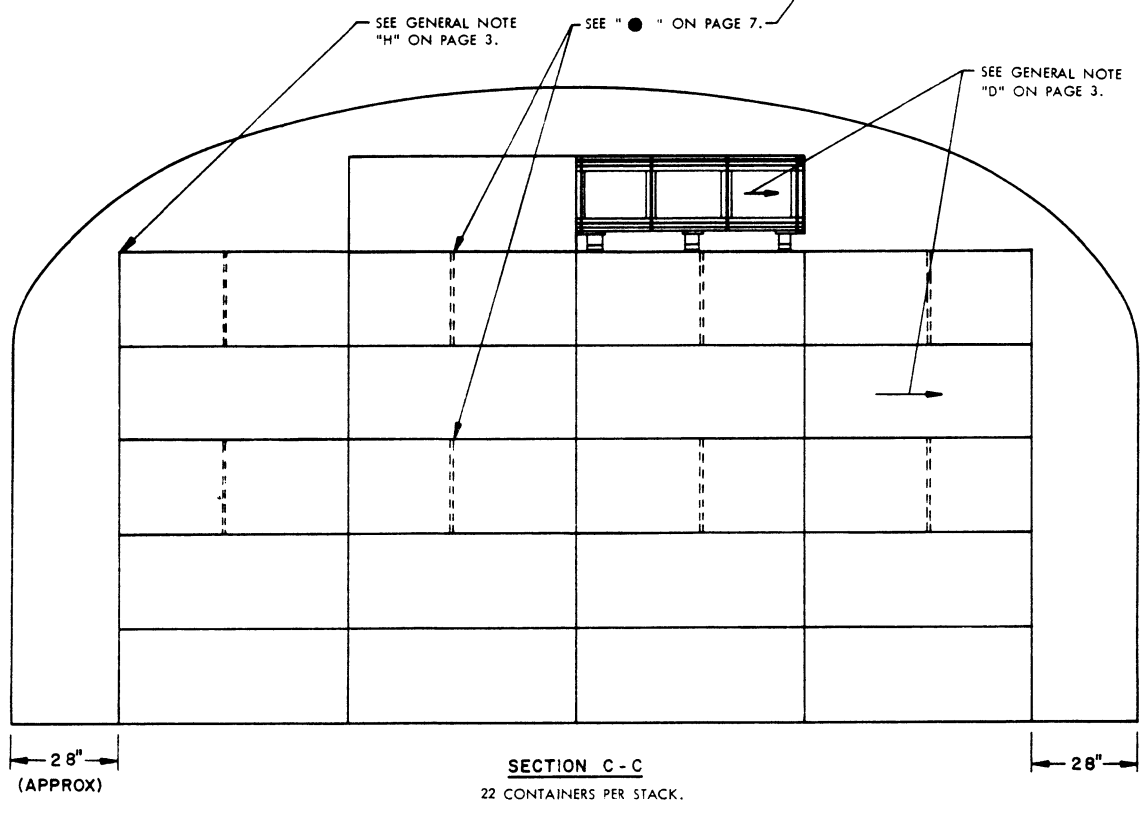
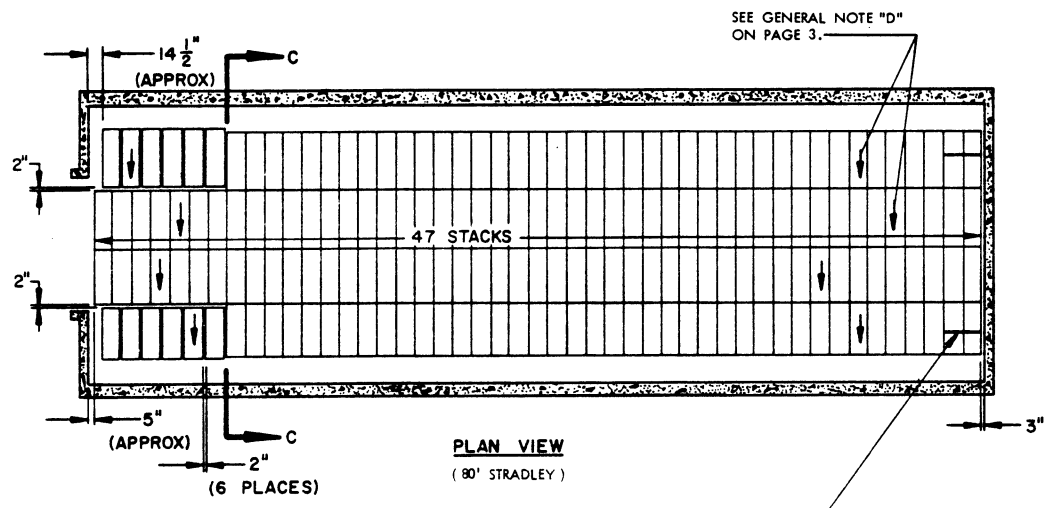
| ITEM | QUANTITY |
|------------------------|--|
| CONTAINER ----- | 1,036 |
| EXPLOSIVE WEIGHT ----- | 224,812 LBS (SEE GENERAL NOTE "M" ON PAGE 3) |



ISOMETRIC VIEW
 (80' STRADLEY)

FOR "GENERAL NOTES" AND
 "MATERIAL SPECIFICATIONS"
 SEE PAGE 3.

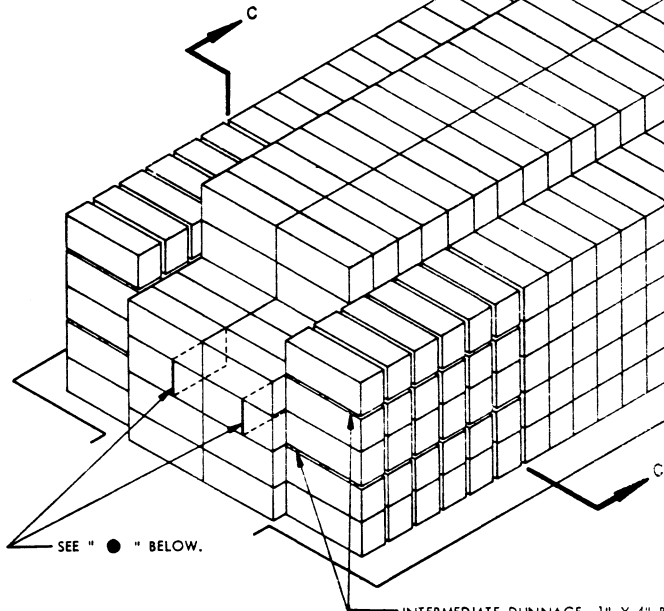
| BILL OF MATERIAL (PER STACK) | | |
|------------------------------|-------------|------------|
| LUMBER | LINEAR FEET | BOARD FEET |
| 1" X 4" | 121-1/2 | 41 |
| WEDGE ----- | 9'-0" ----- | 6 REQD |



STORAGE AS SHOWN
80' STRADLEY

| ITEM | QUANTITY |
|------------------------|--|
| CONTAINER ----- | 1,012 |
| EXPLOSIVE WEIGHT ----- | 219,604 LBS (SEE GENERAL NOTE "M" ON PAGE 3) |

SEE GENERAL NOTE
"D" ON PAGE 3.



ISOMETRIC VIEW
(80' STRADLEY)

INTERMEDIATE DUNNAGE, 1" X 4" BY CUT TO FIT (REF: 11'-0") (12 PIECES REQUIRED). SEE "PLACEMENT OF WEDGES AND INTERMEDIATE DUNNAGE" DETAIL ON PAGE 8 FOR PROPER PLACEMENT OF THE INTERMEDIATE DUNNAGE, AND "●" BELOW FOR ADDITIONAL GUIDANCE.

**FOR "GENERAL NOTES" AND
"MATERIAL SPECIFICATIONS"
SEE PAGE 3.**

| BILL OF MATERIAL ● | | |
|-------------------------------------|-------------|------------|
| LUMBER | LINEAR FEET | BOARD FEET |
| 1" X 4" X 11'-0" | 132 | 43 |
| STEEL STRAPPING, 3/4" X .028" ----- | 144' REQ'D | |

(NOTE "●" CONTINUED FROM RIGHT)

IF A GROUP OF LESS THAN SIX CONTAINER STACKS ARE STORED BY END-HANDLING, THE LENGTH OF THE "INTERMEDIATE DUNNAGE" PIECES ARE TO BE ADJUSTED ACCORDINGLY.

NOTE THAT IT MAY NOT BE POSSIBLE TO STORE AS MANY STACKS IN A MAGAZINE AS DEPICTED IN THE STORAGE VIEWS, BECAUSE THE CONTAINER BEING STORED MAY BE SLIGHTLY WIDER THAN THE WIDTH SPECIFIED WITHIN GENERAL NOTE "C" ON PAGE 3.

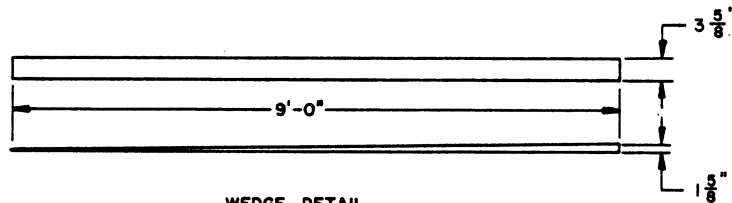
- STACK STABILIZING STRAPS ARE REQUIRED FOR THE FIRST TWO (2) STACKS ADJACENT TO THE REAR WALL OF THE MAGAZINE. STACK STABILIZING STRAPS OF 3/4" X .028" X 12'-0" LONG STEEL STRAPPING WILL BE INSTALLED AROUND THE THIRD AND THE FIFTH LAYER CONTAINERS OF THESE TWO (2) STACKS. ALSO, STACK STABILIZING STRAPS ARE REQUIRED FOR THE LAST TWO (2) CENTRALLY LOCATED STACKS ADJACENT TO THE DOOR OF THE MAGAZINE. SEE "SECTION C-C" VIEW ON PAGE 6 FOR ADDITIONAL GUIDANCE.

ONE INCH (1") THICK INTERMEDIATE DUNNAGE IS REQUIRED FOR THE OUTSIDE ROWS OF THE FRONT SIX (6) CONTAINER STACKS. INSTALL THE DUNNAGE ON THE SECOND AND FOURTH LAYERS AS INDICATED IN THE ISOMETRIC VIEW. IF THE TWO INCH (2") SPACE BETWEEN CONTAINER STACKS AS SHOWN IS NOT REQUIRED AS PER GENERAL NOTE "L" ON PAGE 3, THE TWO INCH (2") SPACE MAY BE DISREGARDED AND CONTAINERS MAY BE STORED AS CLOSELY AS POSSIBLE. HOWEVER, STACK STABILIZING STRAPS WILL BE INSTALLED AROUND THE THIRD AND FIFTH LAYER CONTAINERS OF THE LAST TWO CONTAINER STACKS, AND THE INTERMEDIATE DUNNAGE WILL BE OMITTED.

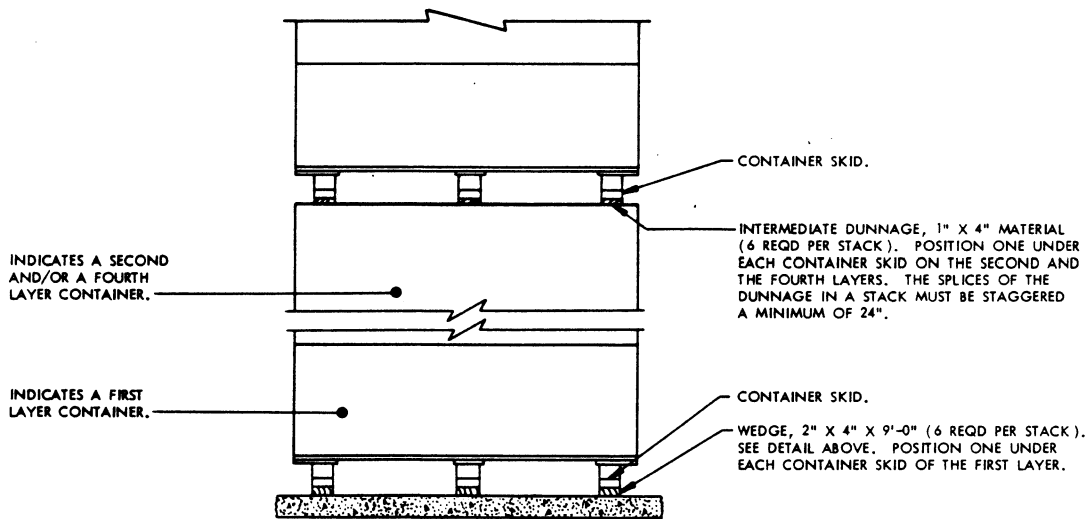
NOTICE: DURING STORING OPERATIONS ADDITIONAL STACK STABILIZING STRAPS MAY BE REQUIRED TO MAINTAIN STABLE STACKS. THESE STRAPS WILL BE INSTALLED AS NECESSARY TO PROVIDE FOR STABLE STACKS.

STORAGE AS SHOWN DEPICTS A STACKING PATTERN WHEREBY THE FRONT SIX (6) CONTAINER STACKS ALONG EACH SIDE OF THE MAGAZINE ARE TO BE STORED BY HANDLING THE CONTAINERS FROM AN END POSITION. ONE OR MORE OF THESE CONTAINER STACKS MAY BE PLACED INTO STORAGE BY HANDLING THE CONTAINERS FROM A SIDE POSITION AS ALL THE OTHER CONTAINERS ARE TO BE HANDLED, PROVIDING THE MHE BEING USED CAN OPERATE IN LESS SPACE THAN ALLOWED BY THE DELINEATED PROCEDURES.

(CONTINUED AT LEFT)



WEDGE DETAIL
2" X 4" MATERIAL



INDICATES A SECOND AND/OR A FOURTH LAYER CONTAINER.

INDICATES A FIRST LAYER CONTAINER.

CONTAINER SKID.

INTERMEDIATE DUNNAGE, 1" X 4" MATERIAL (6 REQD PER STACK). POSITION ONE UNDER EACH CONTAINER SKID ON THE SECOND AND THE FOURTH LAYERS. THE SPLICES OF THE DUNNAGE IN A STACK MUST BE STAGGERED A MINIMUM OF 24".

CONTAINER SKID.

WEDGE, 2" X 4" X 9'-0" (6 REQD PER STACK). SEE DETAIL ABOVE. POSITION ONE UNDER EACH CONTAINER SKID OF THE FIRST LAYER.

PLACEMENT OF WEDGES AND INTERMEDIATE DUNNAGE