

APPROVED
BUREAU OF EXPLOSIVES
A. J. Grassmuck
INSPECTOR
DATE 6/17/57



TRUCKLOADING & BRACING OF PROPELLANTS & COMPLETE ROUNDS IN METAL CONTAINERS, & BULK POWDER

INDEX

| <u>ITEM</u> | <u>PAGE(S)</u> | <u>ITEM</u> | <u>PAGE(S)</u> |
|--------------------|----------------|--------------------------|----------------|
| GENERAL NOTES | 2 | PROPELLING CHARGES | |
| COMPLETE ROUNDS | | 240 MM | 14 |
| 57 MM | 12 | 280 MM | 14 |
| 75 MM | 12 | BLACK POWDER IN MTL DRUM | 15 |
| 81 MM | 12 | CHARGES IN MTL DRUM | 15 |
| 90 MM | 13 | SOLID PROPELLANTS | |
| 105 MM | 13 & 14 | M2 OR MK VII BOX | 15 |
| 4.5" ROCKET | 14 | M17 BOX (LARGE MOUTH) | 15 |
| PROPELLING CHARGES | | M17 BOX (SMALL MOUTH) | 15 |
| 155 MM | 14 | M18 BOX | 15 |
| 8" | 14 | M24 BOX | 15 |

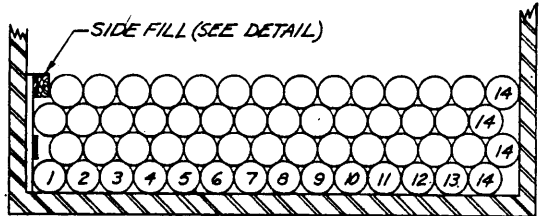
CAUTION
GENERAL NOTES PAGE 2 WILL BE THOROUGHLY
READ PRIOR TO LOADING OPERATIONS

| TRUCKLOADING AND BRACING OF PROPELLANTS AND COMPLETE ROUNDS IN METAL CONTAINERS, AND BULK POWDER | | | |
|--|----------|------------------------------|---|
| DRAWN BY <i>GBF</i> | TRACER | CHECKED BY <i>CRJ/KHW</i> | SUBMITTED BY <i>Joseph E. Cassin</i> |
| DESIGNED BY <i>CRJ</i> | CHECKED | EXAMINED | EXAMINED BY <i>James D. Burke</i> |
| REVISIONS | | | APPROVED BY CHIEF OF THE BUREAU OF EXPLOSIVES <i>Cam Simpson</i> |
| | | | ORDNANCE CORPS U.S.A. |
| | | | 11 December, 1957 |
| CLASS | DIVISION | DRAWING | FILE |
| 19 | 48 | 4021 | 11M1000 |

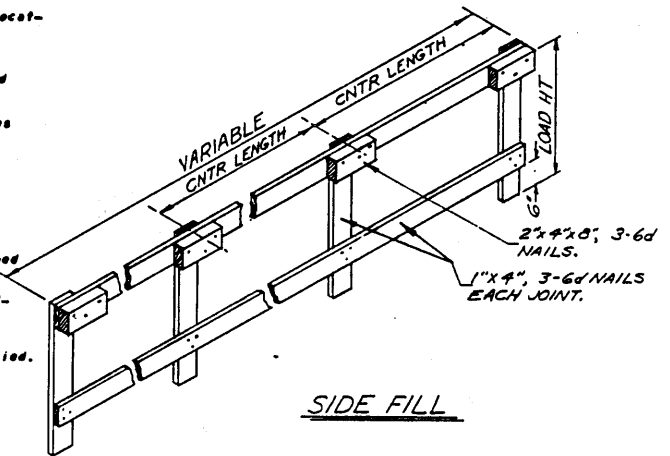
II

GENERAL NOTES

1. Gross weight and axle distribution of weight will be in accordance with Par. 5346.4, ORDU 3-4 Vol 2 dated 15 July 1955.
2. The number of units per trailer may be adjusted to fit the dimensions of the vehicle concerned or the quantity to be shipped; however, the approved methods contained herein must be followed for blocking, bracing and stying of the load.
3. The methods of loading shown herein are based on trailers 36' 0" long X 7' 6" wide inside dimensions and may be applied to trailers with wood, wood and metal, or metal floors.
4. Nailing to the trailer side walls provides no effective anchoring; therefore, should be avoided. All nailing will be accomplished within the blocking lumber and/or to trailer floor.
5. Less-than-truckload shipments will be loaded in the forward part of the trailer and braced similarly to that required for truckload lots.
6. If the trailer is provided with an installed bulkhead, all blocking in the front end may be omitted. Position containers against forward bulkhead.
7. Loads shown herein are typical only, partial layers may be located to suit weight distribution requirements.
8. When loading trailers with a square forward end, omit forward bulkhead and load items directly against forward wall. Not applicable to complete rounds, charges, propelling and charges in Metal Drum. (See Bulkhead detail for these items.)
9. When loading in trailers w/o rear corner posts, rear blocking members will be of sufficient length to contact doors when closed. This will prevent shifting of load in transit.
10. Level loading throughout length of trailer will be accomplished whenever possible, since this method is the most economical. It is imperative, however, that load weight and axle distribution of weight be in accordance with Note 1 above.
11. Lumber sizes shown herein are nominal unless otherwise specified.



TYPICAL CROSS SECTION
LOADING OF 90 MM, 105 MM & 4.5" ROCKET
IN METAL CONTAINERS. OTHER BLOCKING
WILL BE AS SHOWN PAGE 3.



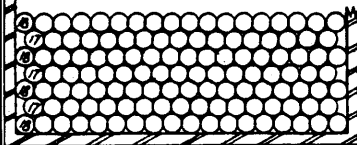
SIDE FILL

MATERIAL SPECIFICATIONS

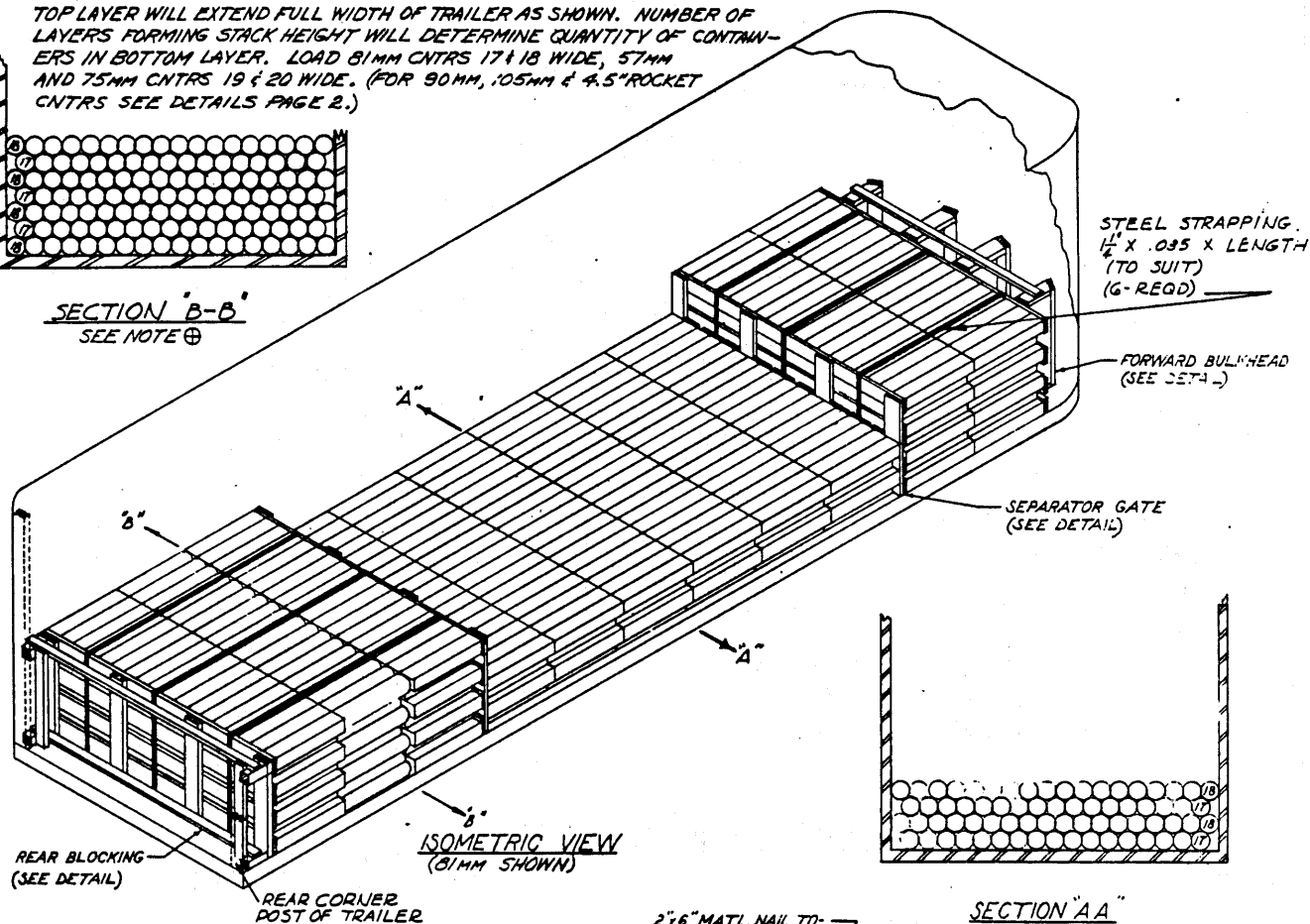
- LUMBER: See Par 5400, ORDU 3-4, Vol 2 dated 15 April 1956
- NAILS: Common, cement coated, Fed. Spec. FF-N-105,
Alt: Annular-ring type nails of same size.
- STRAPPING: 1/2" X .035 Type 1, Class A or B, Fed. Spec. QQ-S-701A.

NOTE ⊕

TOP LAYER WILL EXTEND FULL WIDTH OF TRAILER AS SHOWN. NUMBER OF LAYERS FORMING STACK HEIGHT WILL DETERMINE QUANTITY OF CONTAINERS IN BOTTOM LAYER. LOAD 81MM CNTRS 17 1/8 WIDE, 57MM AND 75MM CNTRS 19 1/2 WIDE. (FOR 90MM, 105MM & 4.5" ROCKET CNTRS SEE DETAILS PAGE 2.)

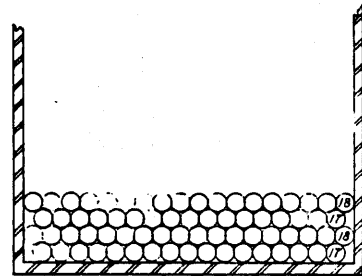


SECTION B-B
SEE NOTE ⊕



ISOMETRIC VIEW
(81MM SHOWN)

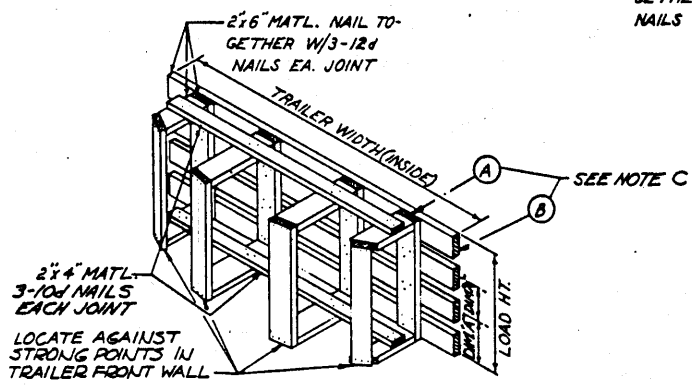
SECTION A-A
SEE NOTE ⊕



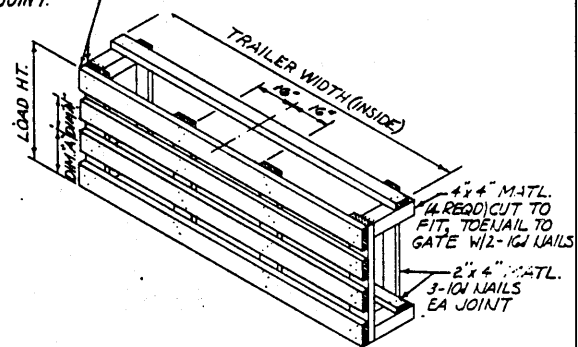
REAR BLOCKING
(SEE DETAIL)

REAR CORNER POST OF TRAILER

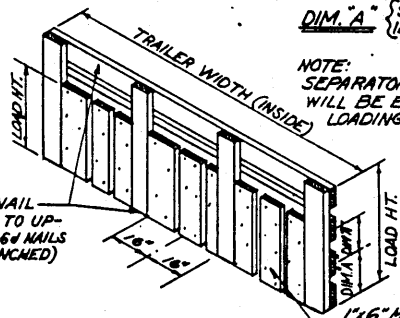
2x6" MATL. NAIL TOGETHER W/3-12d NAILS EA. JOINT



FORWARD BULKHEAD DETAIL



REAR BLOCKING DETAIL



SEPARATOR GATE DETAIL
(2 REQD)

DIM. "A" { 9" FOR 57mm, 75mm, & 81mm.
12" FOR 90mm, 105mm, & 4.5" ROCKET

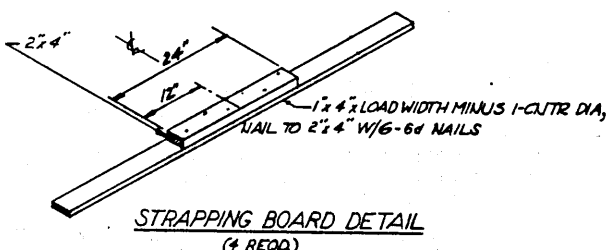
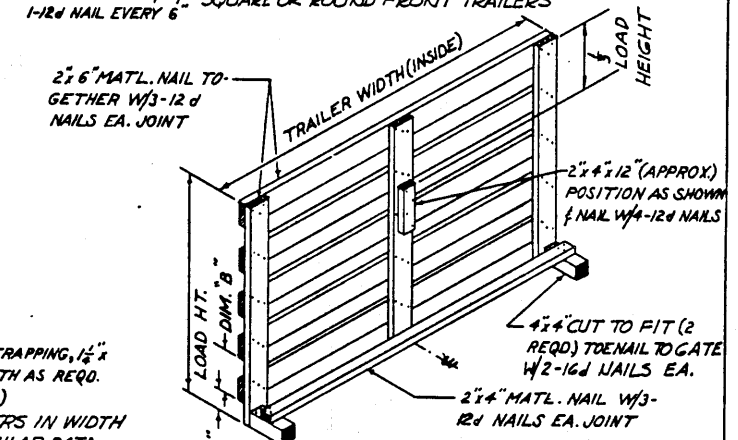
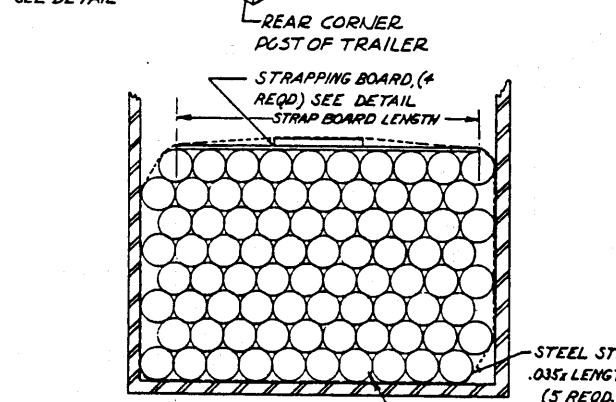
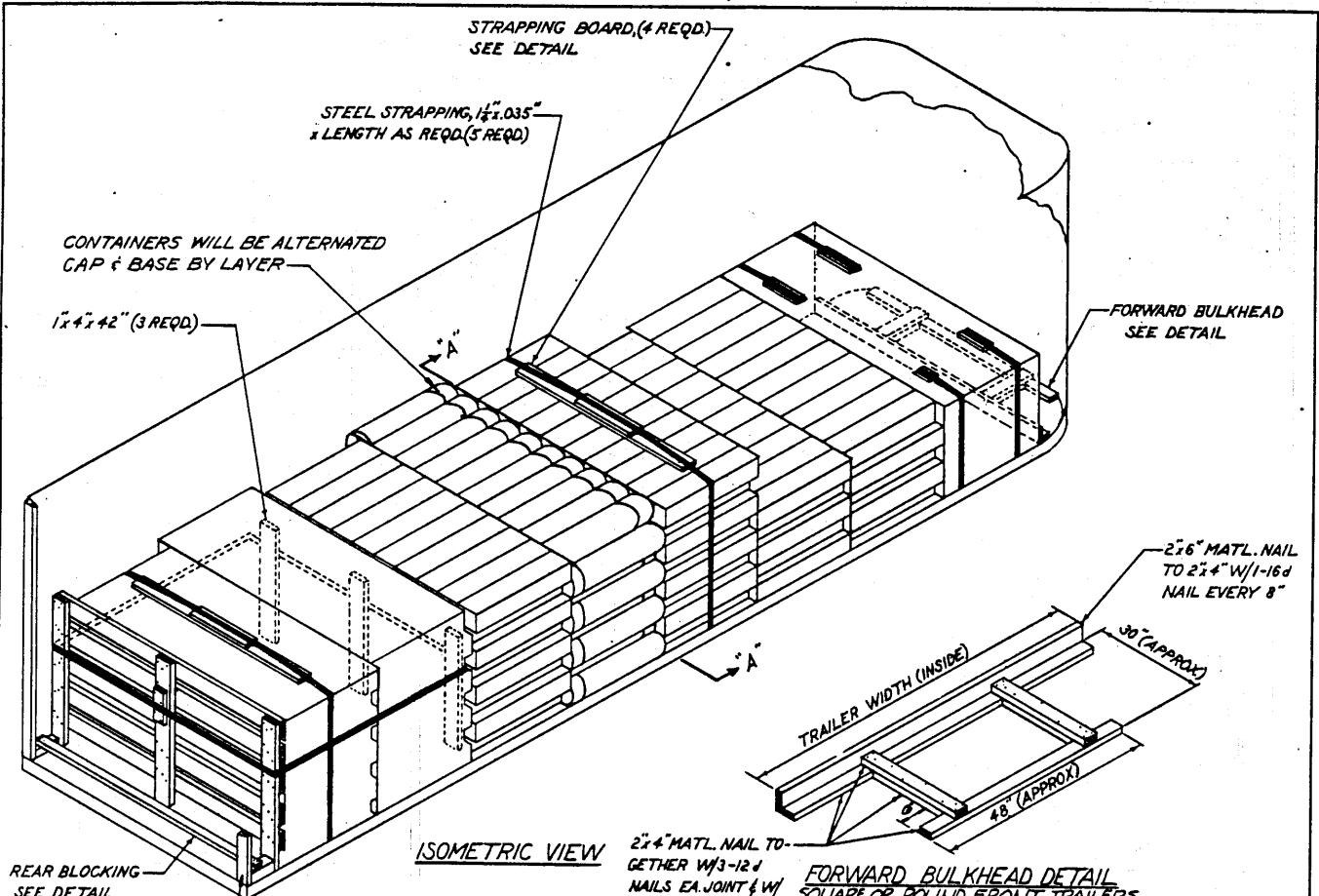
NOTE: SEPARATOR GATES (STRAPPING A) WILL BE ELIMINATED IF LEVEL LOADING IS POSSIBLE.

NOTES

LOAD HEIGHT WILL GOVERN THE NUMBER OF CROSS-MEMBERS IN SEPARATOR GATES, FORWARD BULKHEAD & REAR BLOCKING. NUMBER WILL VARY DUE TO LOAD WEIGHT DISTRIBUTION REQUIREMENTS. (SEE NOTE 1, PAGE 2)

B. LOAD SHOWN HEREON IS TYPICAL ONLY, QUANTITIES MAY BE ADJUSTED TO BE CONSISTANT WITH STATE WEIGHT LAWS; HOWEVER, THE METHODS OF BLOCKING, BRACING AND STAYING SHOWN MUST BE ADHERED TO.

C. WHEN LOADING SQUARE FRONT TRAILERS USE PCS. A & B ONLY TO FORM BULKHEAD.



NOTES

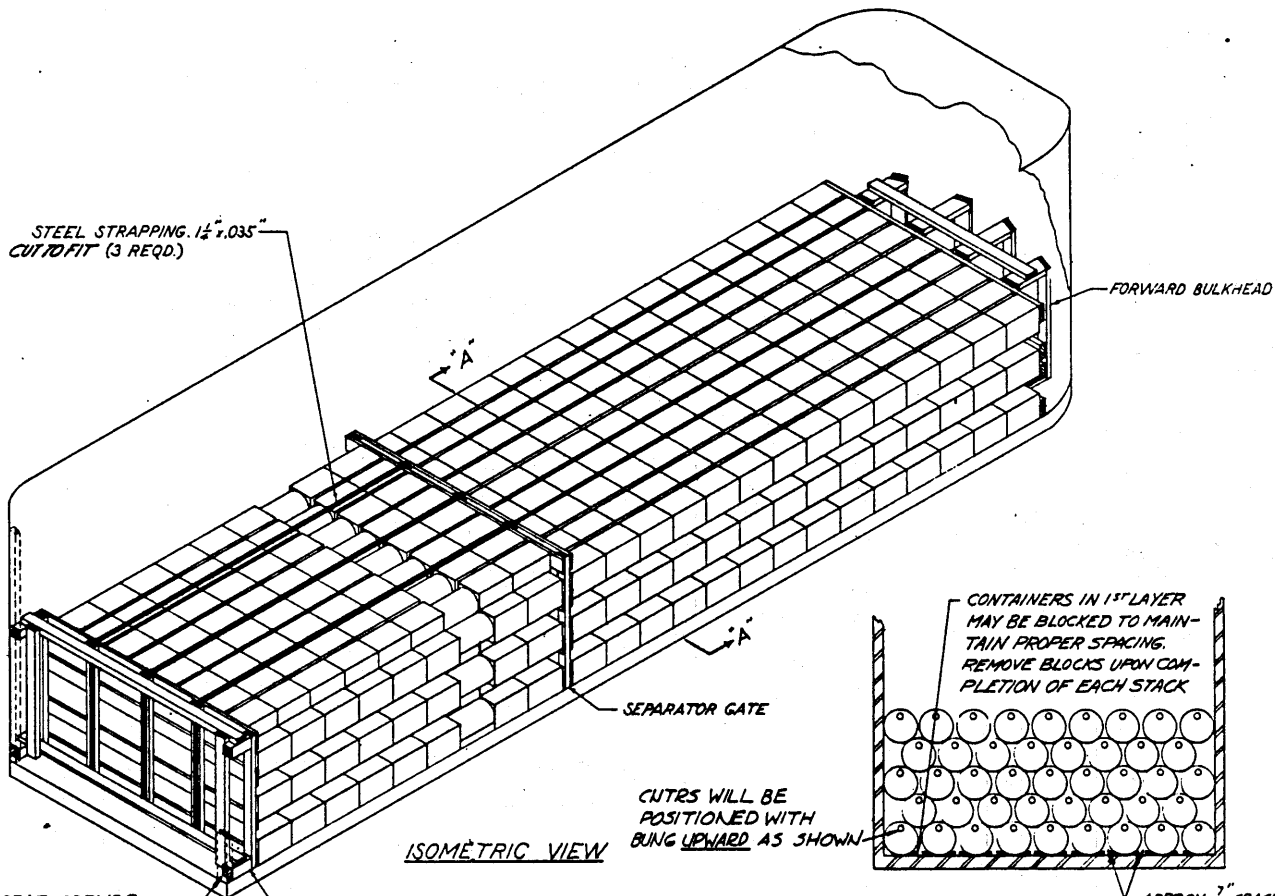
A. LOAD HEIGHT WILL GOVERN THE NUMBER OF CROSS MEMBERS IN REAR BLOCKING. NUMBER WILL VARY DUE TO THE LOAD WEIGHT DISTRIBUTION REQUIREMENTS. (SEE NOTE 1, PAGE 2)

B. EXCESS SPACE ACROSS WIDTH OF TRAILER MAY BE UTILIZED BY EQUALLY SPACING CONTAINERS. POSITION OUTSIDE CONTAINERS AGAINST WALLS.

| CNTR. MOD. | DIM. "A" | DIM. "B" |
|----------------|----------|----------|
| M 9 & M 9 E1 | 7 1/2" | 9 1/2" |
| M 10 & M 10 A1 | 6 1/2" | 8 1/2" |
| M 10 A 2 | 7" | 9 1/2" |
| M 13 | 4" | 6" |
| M 13 A 1 | 4 1/2" | 6 1/2" |
| M 14 | 5 1/2" | 8 1/2" |
| M 16 & M 18 | 4 1/2" | 7" |
| M 18 A 1 | 4 1/2" | 7 1/2" |
| M 19 | 6" | 8 1/2" |
| M 34 9 (T 64) | 8 1/2" | 10 1/2" |
| M 35 0 | 7 1/2" | 9 1/2" |

STEEL STRAPPING. $1\frac{1}{2}$ " x .035"
CUT TO FIT (3 REQD.)

FORWARD BULKHEAD

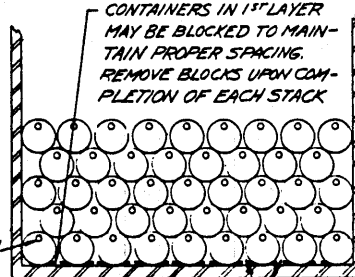


ISOMETRIC VIEW

SEPARATOR GATE

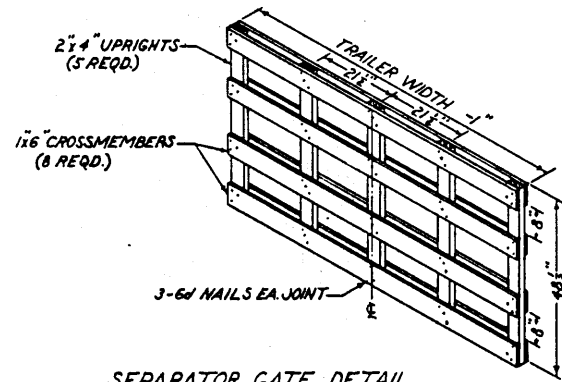
CUTRS WILL BE POSITIONED WITH BUNG UPWARD AS SHOWN

CONTAINERS IN 1ST LAYER MAY BE BLOCKED TO MAINTAIN PROPER SPACING. REMOVE BLOCKS UPON COMPLETION OF EACH STACK

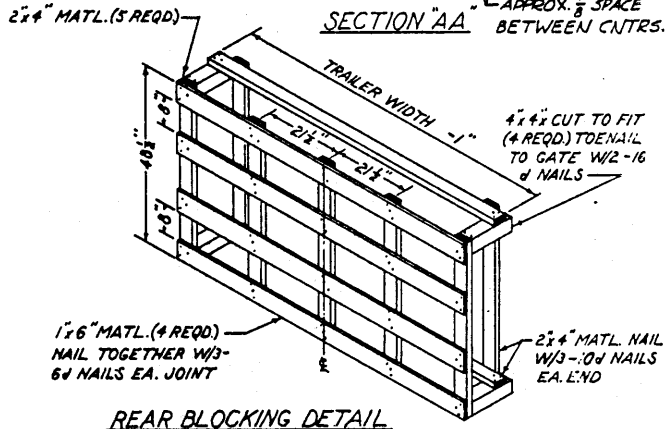


SECTION "AA" APPROX. $\frac{1}{8}$ " SPACE BETWEEN CNTRS.

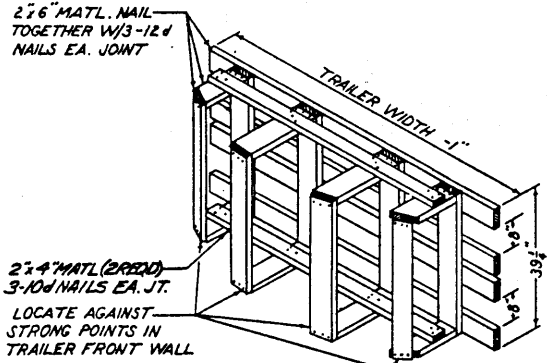
REAR CORNER POST OF TRAILER REAR BLOCKING



SEPARATOR GATE DETAIL (1 REQD.)

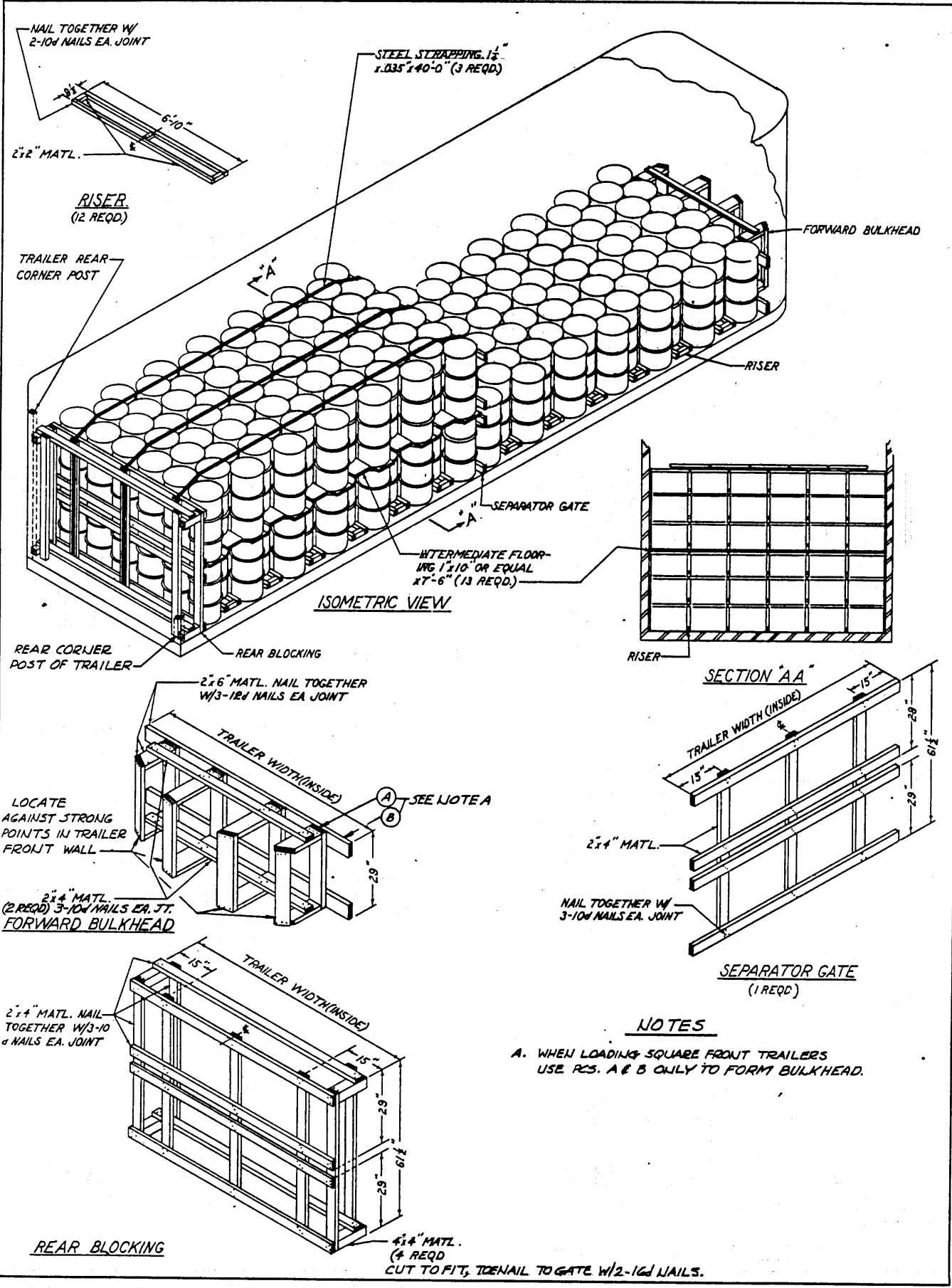


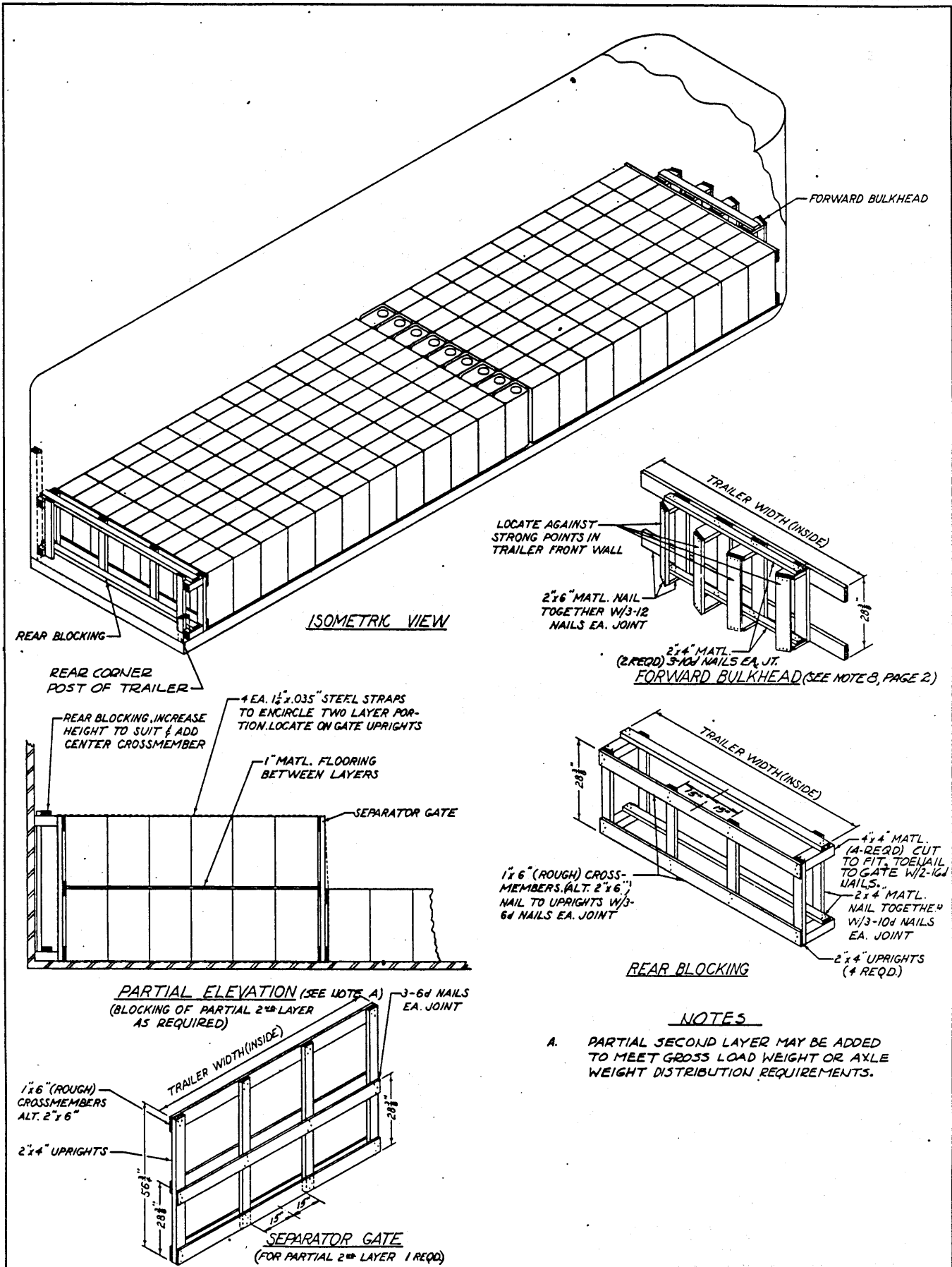
REAR BLOCKING DETAIL



FORWARD BULKHEAD DETAIL (SEE NOTE 8, PAGE 2)

NOTE:
LOAD HEIGHT WILL GOVERN THE NUMBER OF CROSSMEMBERS IN SEPARATOR GATE, FORWARD BULKHEAD AND REAR BLOCKING. NUMBER WILL VARY DUE TO LOAD WEIGHT AND DISTRIBUTION REQUIREMENTS. (SEE NOTE 1, PAGE 2)





LOCATE AGAINST STRONG POINTS IN TRAILER FRONT WALL

2x6" MATL. NAIL TOGETHER W/3-12 NAILS EA. JOINT

2x4" MATL. (2 REQD) 3-10d NAILS EA. JT. FORWARD BULKHEAD (SEE NOTE B, PAGE 2)

1x6" (ROUGH) CROSSMEMBERS (ALT. 2x6") NAIL TO UPRIGHTS W/3-6d NAILS EA. JOINT

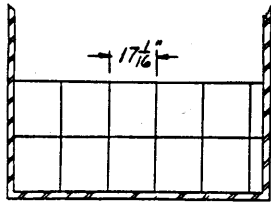
4x4" MATL. (4 REQD) CUT TO FIT, TOE NAIL TO GATE W/2-10d NAILS

2x4" MATL. NAIL TOGETHER W/3-10d NAILS EA. JOINT

2x4" UPRIGHTS (4 REQD)

NOTES

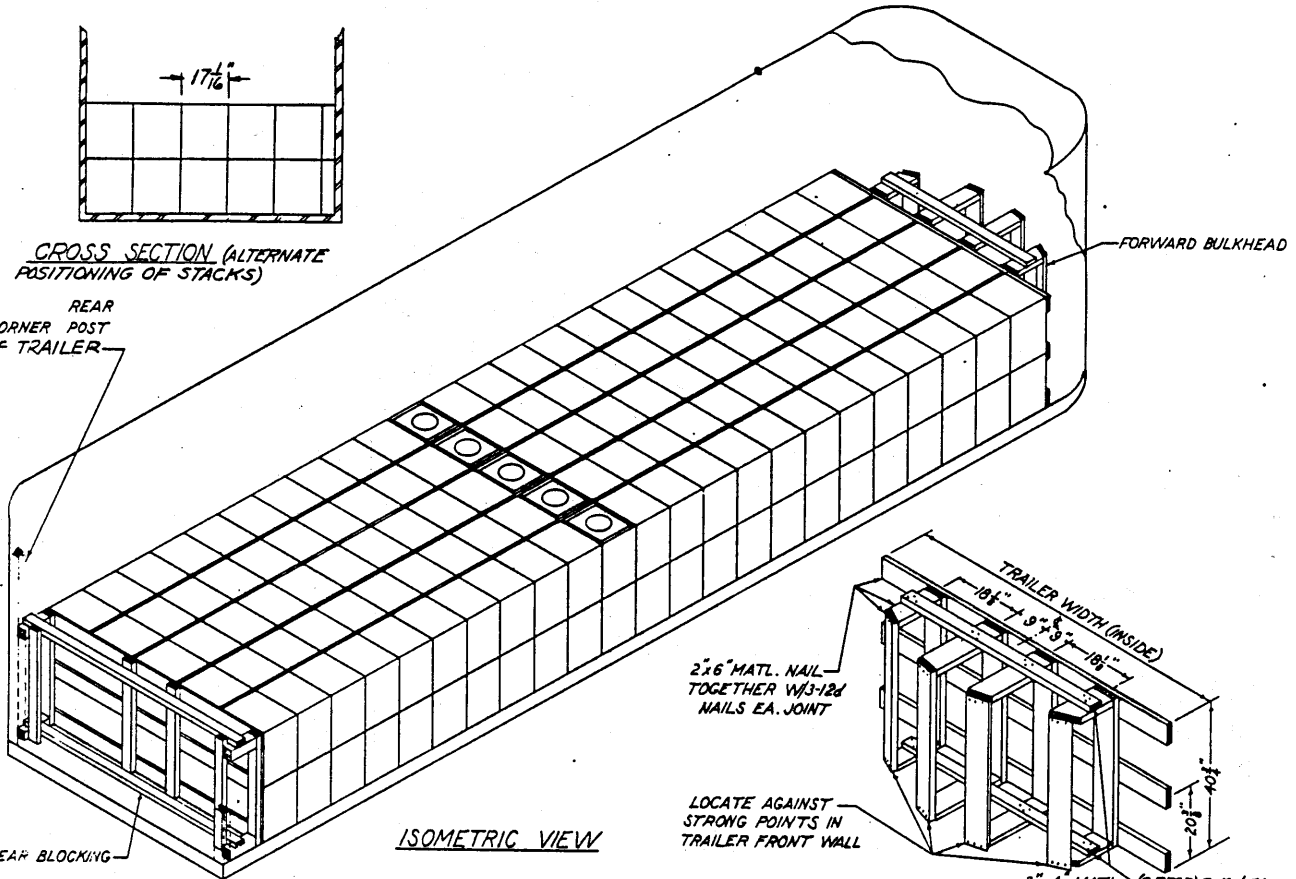
- A. PARTIAL SECOND LAYER MAY BE ADDED TO MEET GROSS LOAD WEIGHT OR AXLE WEIGHT DISTRIBUTION REQUIREMENTS.



CROSS SECTION (ALTERNATE POSITIONING OF STACKS)

REAR CORNER POST OF TRAILER

REAR BLOCKING



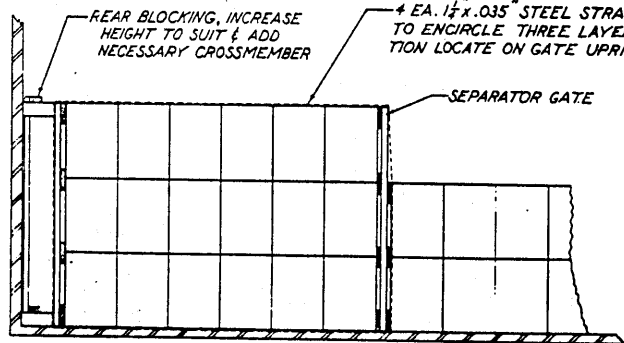
ISOMETRIC VIEW

FORWARD BULKHEAD

2x6" MATL. NAIL TOGETHER W/3-12d NAILS EA. JOINT

LOCATE AGAINST STRONG POINTS IN TRAILER FRONT WALL

2x4" MATL. (2 REQD) 3-10d EA. JT. FORWARD BULKHEAD (SEE NOTE B, PAGE 2)

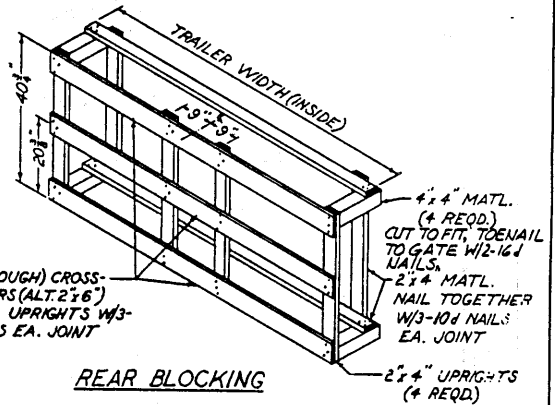


PARTIAL ELEVATION (SEE NOTE B) (BLOCKING OF PARTIAL 3RD LAYER AS REQD)

REAR BLOCKING, INCREASE HEIGHT TO SUIT & ADD NECESSARY CROSSMEMBER

4 EA. 1 1/2" x .035" STEEL STRAPS TO ENCIRCLE THREE LAYER PORTION LOCATE ON GATE UPRIGHTS

SEPARATOR GATE



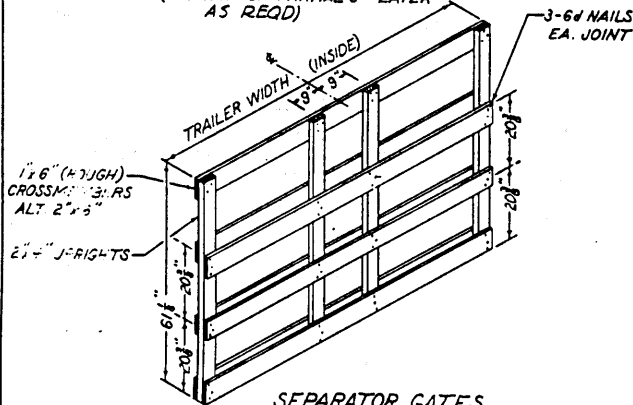
REAR BLOCKING

1 1/2" (ROUGH) CROSSMEMBERS (ALT. 2x6") NAIL TO UPRIGHTS W/3-6d NAILS EA. JOINT

4x4" MATL. (4 REQD.) CUT TO FIT, TO NAIL TO GATE W/2-16d NAILS.

2x4" MATL. NAIL TOGETHER W/3-10d NAILS EA. JOINT

2x4" UPRIGHTS (4 REQD.)



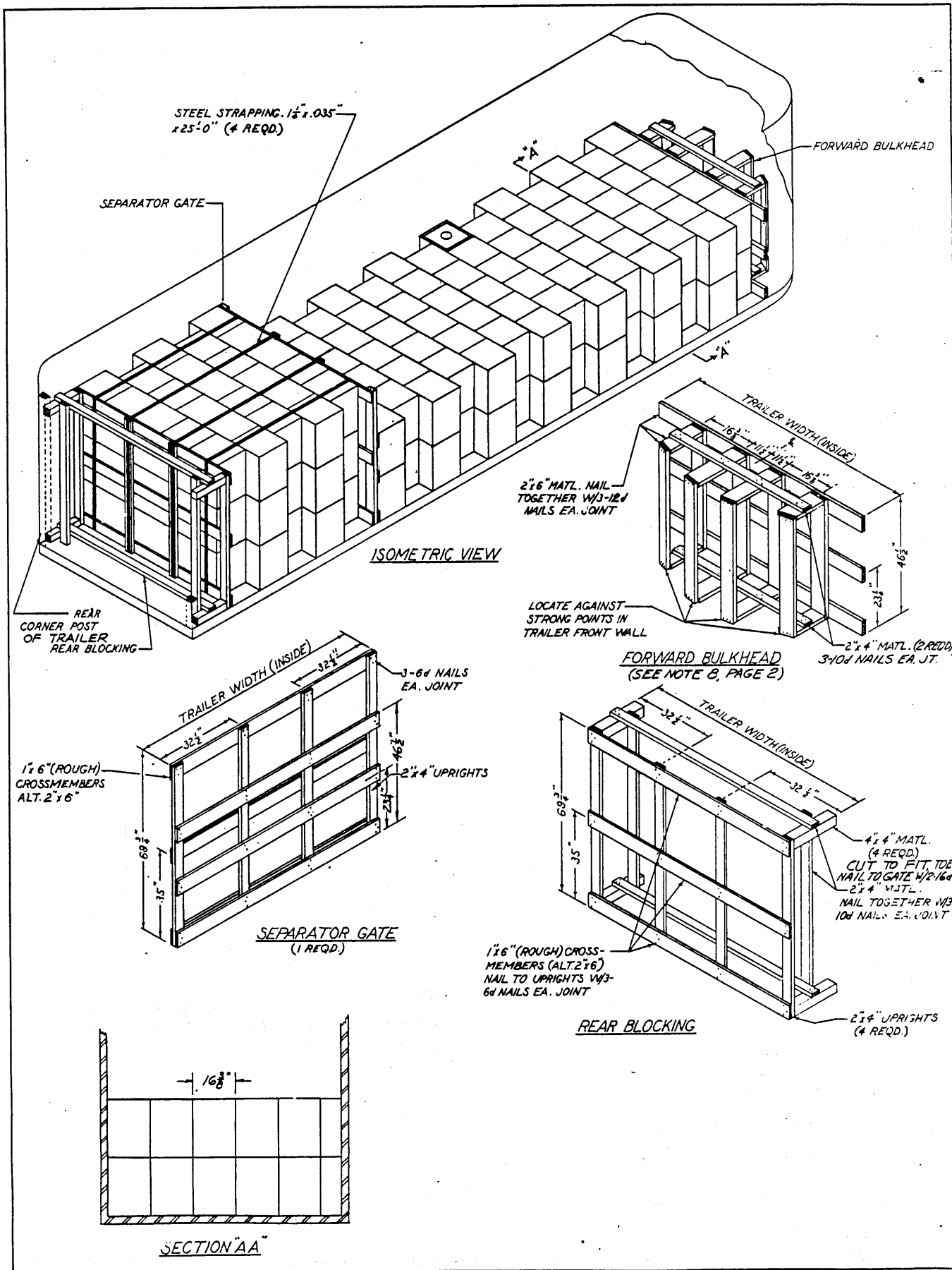
SEPARATOR GATES (FOR PARTIAL 3RD LAYER I REQD)

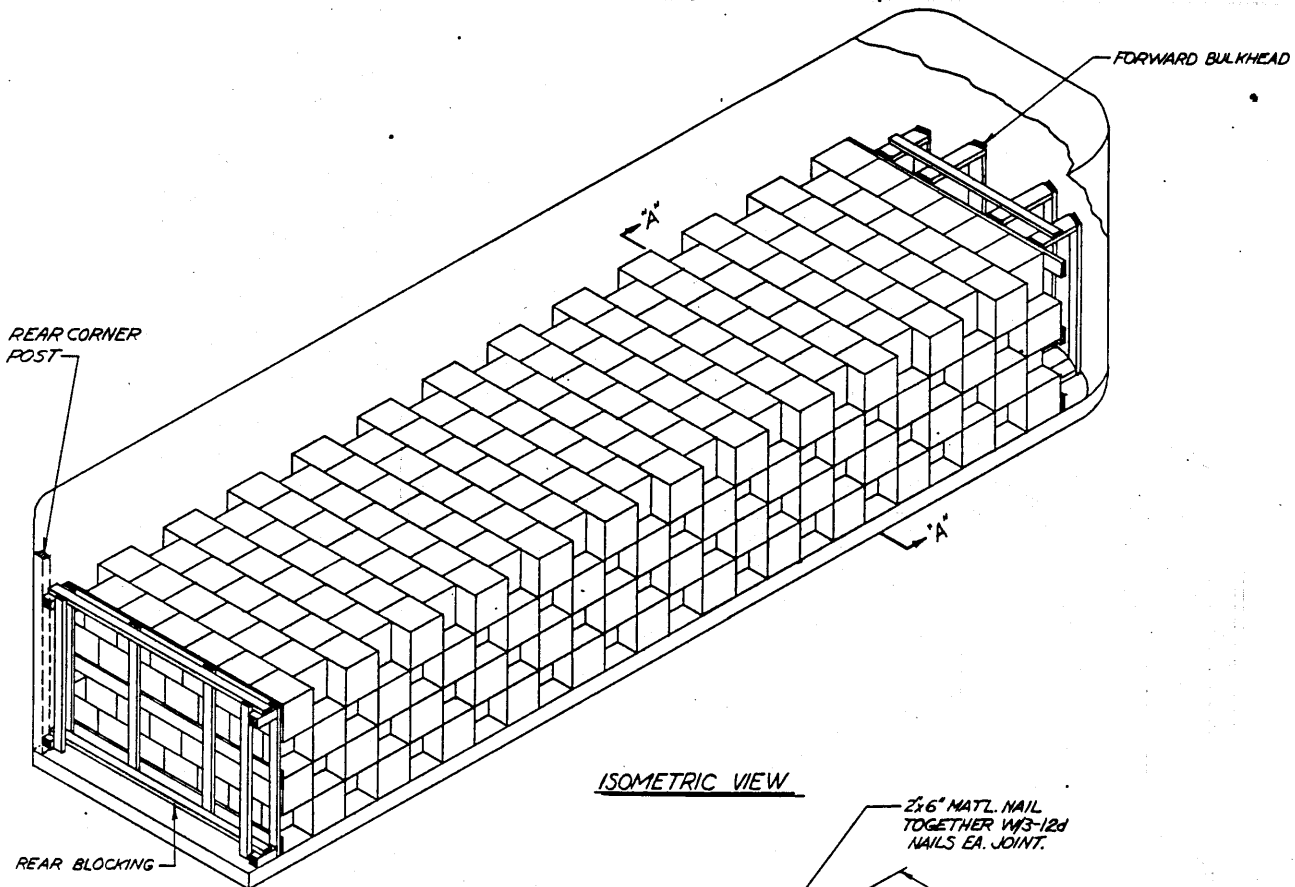
1 1/2" (ROUGH) CROSSMEMBERS (ALT. 2x6") 2x4" UPRIGHTS

3-6d NAILS EA. JOINT

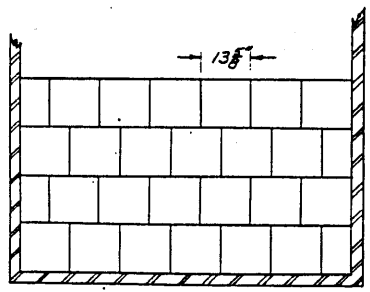
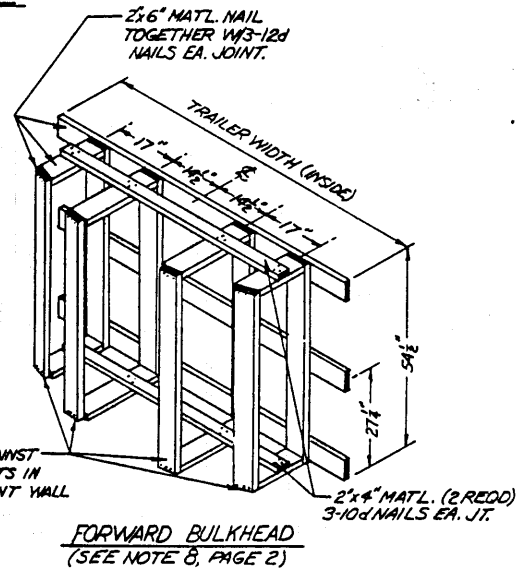
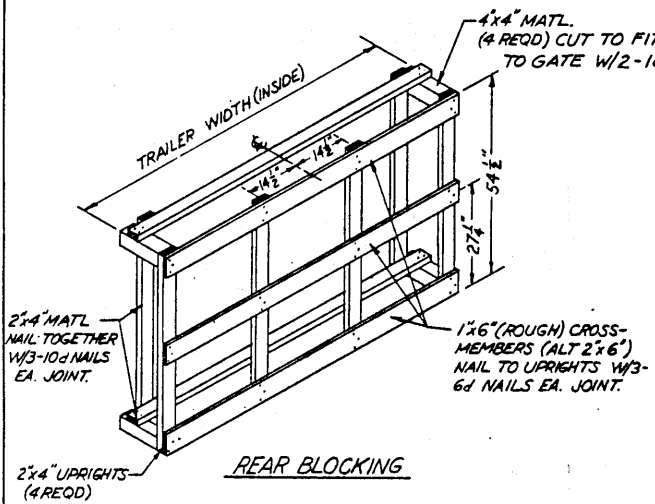
NOTE:

PARTIAL 3RD LAYER MAY BE ADDED TO MEET GROSS LOAD WEIGHT OR AXLE WEIGHT DISTRIBUTION REQUIREMENTS.



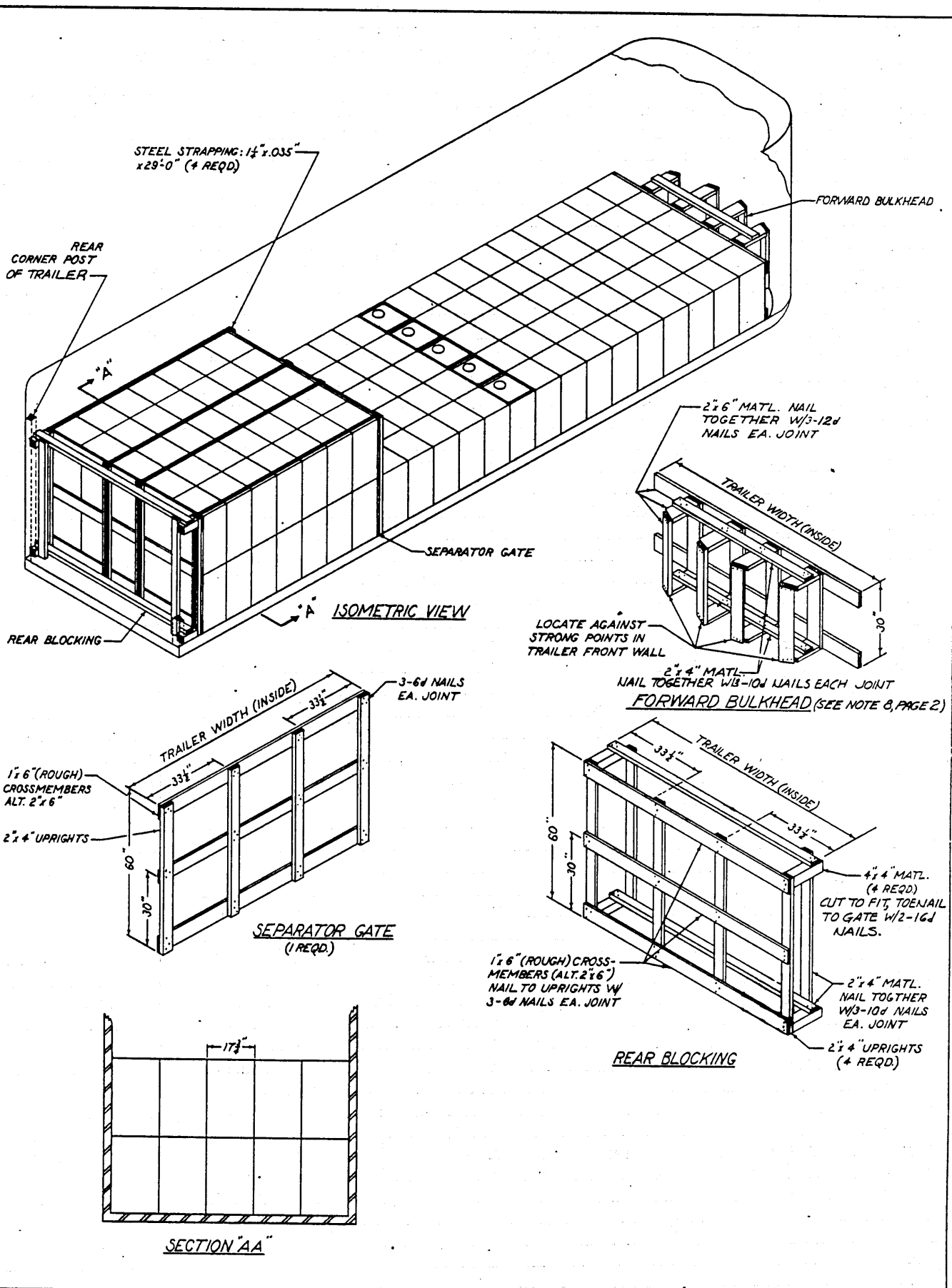


ISOMETRIC VIEW



BOXES MAY BE STACKED SIMILAR TO METHOD SHOWN PAGE 9

NOTE:
 PARTIAL LAYER MAY BE ADDED TO MEET GROSS LOAD WEIGHT OR TO PROVIDE PROPER WEIGHT DISTRIBUTION. USE SEPARATOR GATE AND STRAPPING SIMILAR TO THAT SHOWN ON PAGE 9.



| LINE | AIC SYMBOL | FEDERAL STOCK NO. & DEPT OF DEFENSE IDENTIFICATION CODE | PKG WT (LBS) | APPROX PACKAGE DIMENSIONS | PAGE PLANS, SECT, ETC | CNTRS IN WIDTH OF TRUCK | CNTRS IN LENGTH OF TRUCK | CNTRS IN HEIGHT OF TRUCK | TOTAL CNTRS | TOTAL WT OF LOAD (INCL DUNNAGE) | MATERIALS | | | LINE |
|------|------------|---|--------------|---------------------------|-----------------------|-------------------------|--------------------------|--------------------------|-------------|---------------------------------|--------------|-----------|-----------|------|
| | | | | | | | | | | | LUCKER BD FT | NAILS LBS | STRAP LBS | |
| | | CARTRIDGE, 57 MM | | | | | | | | | 173 | 3 | 16 | |
| 1 | R111M | 1310 300 5570 8500 | 24 | 31 1/2" X 4 1/2" | 3 | 19 & 20 | 10 | 3 & 19 3 & 20 | 1170 | 20,632 | 173 | 3 | 16 | 1 |
| 2 | R11JM | " " 5579 8500 | 24 | " " | " | " " | " " | " " | " | " | 173 | 3 | 16 | 2 |
| 3 | R11NM | " " 5581 8500 | 24 | " " | " | " " | " " | " " | " | " | " | " | " | 3 |
| 4 | | | | | | | | | | | | | | 4 |
| 5 | | | | | | | | | | | | | | 5 |
| 6 | | CARTRIDGE, 75 MM | | | | | | | | | | | | 6 |
| 7 | R1L1M | 1315 020 4641 C078 | 31.2 | 31 1/2" X 4 1/2" | 3 | 19 & 20 | 9 | 2 & 19 3 & 20 | 882 | 27,901 | 145 | 3 | 16 | 7 |
| 8 | R1L1N | " " 4601 C078 | 31 | " " | " | " " | " " | " " | " | 27,724 | 145 | 3 | 16 | 8 |
| 9 | R1L1W | " " 4645 C075 | 32.3 | " " | " | " " | " " | " " | " | 28,071 | 145 | 3 | 16 | 9 |
| 10 | R1L1V | " " 4646 C075 | 32.1 | " " | " | " " | " " | " " | " | 28,895 | 145 | 3 | 16 | 10 |
| 11 | R1M1N | " " 4681 C026 | 34.5 | 29 1/2" X 5" | " | 17 & 18 | 11 | 2 & 17 2 & 18 | 770 | 26,891 | 124 | 3 | 13 | 11 |
| 12 | R1M1M | " " 4682 C032 | 36.6 | " " | " | " " | 11 | " " | 770 | 28,508 | 124 | 3 | 13 | 12 |
| 13 | R1M1W | " " 4684 C029 | 33 | " " | " | " " | 11 | " " | 770 | 25,736 | 124 | 3 | 13 | 13 |
| 14 | R1M1H | " " 4685 C028 | 33.7 | " " | " | " " | 11 | " " | 770 | 26,275 | 124 | 3 | 13 | 14 |
| 15 | R1M1S | " " 4679 C027 | 34.5 | " " | " | " " | 11 | " " | 770 | 26,891 | 124 | 3 | 13 | 15 |
| 16 | R1M1V | " " 4680 C027 | 26.9 | " " | " | " " | 11 | 2 & 17 3 & 18 | 960 | 26,422 | 145 | 3 | 16 | 16 |
| 17 | R1R1N | " " 4643 C095 | 30.5 | 31 1/2" X 4 1/2" | 3 | 19 & 20 | 10 | 2 & 19 3 & 20 | 980 | 30,272 | 145 | 3 | 16 | 17 |
| 18 | R1R1M | " " 4647 C075 | 32.0 | 31 1/2" X 4 1/2" | 3 | " " | 9 | " " | 882 | 29,400 | 145 | 3 | 16 | 18 |
| 19 | R1R1J | " " 4644 C080 | 31.8 | " " | 3 | " " | 9 | " " | 882 | 28,430 | 145 | 3 | 16 | 19 |
| 20 | R1R1W | " " 4642 C079 | 30.3 | " " | 3 | " " | 9 | " " | 882 | 27,107 | 145 | 3 | 16 | 20 |
| 21 | R1R1O | " " 4606 C079 | 31.2 | " " | 3 | " " | 9 | " " | 882 | 27,901 | 145 | 3 | 16 | 21 |
| 22 | R1R1U | " " 4630 C079 | 31.2 | " " | 3 | " " | 9 | " " | 882 | 27,901 | 145 | 3 | 16 | 22 |
| 23 | R1R1V | " " 4632 C079 | 31.2 | " " | 3 | " " | 9 | " " | 882 | 27,901 | 145 | 3 | 16 | 23 |
| 24 | R1R1X | " " 4637 C079 | 29.9 | " " | 3 | " " | 9 | " " | 882 | 26,754 | 145 | 3 | 16 | 24 |
| 25 | R1R1Y | " " 4634 C079 | 29.8 | " " | 3 | " " | 9 | " " | 882 | 26,665 | 145 | 3 | 16 | 25 |
| 26 | R1R1Z | " " 4639 C079 | 31.2 | " " | 3 | " " | 9 | " " | 882 | 27,901 | 145 | 3 | 16 | 26 |
| 27 | R1V1N | " " 4686 C028 | 30.5 | 29 1/2" X 5" | 3 | 17 & 18 | 11 | 2 & 17 3 & 18 | 960 | 29,908 | 145 | 3 | 16 | 27 |
| 28 | R1V1M | " " 4687 C032 | 33.7 | " " | 3 | " " | 11 | 2 & 17 2 & 18 | 770 | 26,275 | 124 | 3 | 13 | 28 |
| 29 | R1V1W | " " 4689 C027 | 36 | " " | 3 | " " | 11 | " " | 770 | 28,046 | 124 | 3 | 13 | 29 |
| 30 | R1V1X | " " 4692 C027 | 36 | " " | 3 | " " | 11 | " " | 770 | 28,046 | 124 | 3 | 13 | 30 |
| 31 | R1V1L | " " 4694 C026 | 33.7 | " " | 3 | " " | 11 | " " | 770 | 26,275 | 124 | 3 | 13 | 31 |
| 32 | | | | | | | | | | | | | | 32 |
| 33 | | | | | | | | | | | | | | 33 |
| 34 | | CARTRIDGE, 81MM | | | | | | | | | | | | 34 |
| 35 | R4F1J | 1315 301 1806 C220 | 28.8 | 29 1/2" X 5" | 3 | 17 & 18 | 11 | 2 & 17 3 & 18 | 960 | 28,261 | 145 | 3 | 16 | 35 |
| 36 | R4F1L | " " 1805 C220 | 28.8 | " " | 3 | " " | 11 | " " | 960 | " | 145 | 3 | 16 | 36 |
| 37 | R4F1W | 1315 020 4984 C231 | 32 | " " | 3 | " " | 11 | " " | 960 | 31,358 | 145 | 3 | 16 | 37 |
| 38 | R4F1V | " " 4985 C230 | 30 | " " | 3 | " " | 11 | " " | 960 | 29,422 | 145 | 3 | 16 | 38 |
| 39 | R4H1N | " " 4977 C229 | 30 | " " | 3 | " " | 11 | " " | 960 | " | 145 | 3 | 16 | 39 |
| 40 | R4H1M | " " 4949 C220 | 28.8 | " " | 3 | " " | 11 | " " | 960 | 28,261 | 145 | 3 | 16 | 40 |
| 41 | R4H1W | " " 4965 C226 | 28 | " " | 3 | " " | 11 | " " | 960 | 27,486 | 145 | 3 | 16 | 41 |
| 42 | R4H1V | " " 4988 C230 | 30 | " " | 3 | " " | 11 | " " | 960 | 29,422 | 145 | 3 | 16 | 42 |
| 43 | R4H1O | " " 4983 C221 | 30 | " " | 3 | " " | 11 | " " | 960 | " | 145 | 3 | 16 | 43 |
| 44 | R4H1U | " " 4967 C220 | 28 | " " | 3 | " " | 11 | " " | 960 | 27,486 | 145 | 3 | 16 | 44 |
| 45 | R4H1S | " " 4991 C230 | 30 | " " | 3 | " " | 11 | " " | 960 | 29,422 | 145 | 3 | 16 | 45 |
| 46 | R4J1A | " " 4993 C230 | 29 | 31" X 5" | 3 | " " | 10 | 3 & 17 3 & 18 | 1050 | 31,002 | 173 | | 19 | 46 |
| 47 | R4J1B | " " 4995 C220 | 28 | 29 1/2" X 5" | 3 | " " | 11 | 2 & 17 3 & 18 | 960 | 27,486 | 145 | 3 | 16 | 47 |
| 48 | R4J1C | " " 4997 C229 | 30 | " " | 3 | " " | 11 | " " | 960 | 29,422 | 145 | 3 | 16 | 48 |

| L I N E | A I C SYMBOL | FEDERAL STOCK NO. & DEPT OF DEFENSE IDENTIFICATION CODE | PKG WT (LBS) | APPROX PACKAGE DIMENSIONS | PAGE PLANS, SECT, ETC | CNTRS IN WIDTH OF TRUCK | CNTRS IN LENGTH OF TRUCK | CNTRS IN HEIGHT OF TRUCK | TOTAL CNTRS | TOTAL WT OF LOAD (INCL DUNNAGE) | MATERIALS | | | L I N E |
|---------|--------------|---|--------------|---------------------------|-----------------------|-------------------------|--------------------------|--------------------------|-------------|---------------------------------|--------------|-----------|-----------|---------|
| | | | | | | | | | | | LUMBER BD FT | NAILS LBS | STRAP LBS | |
| | | CARTRIDGE 90 MM | | | | | | | | | | | | |
| 1 | PS01B | 1315 020 4430 C267 | 67.3 | 43 1/2" X 6 1/2" | 3 | 14 | 7 | 4 | 392 | 26,934 | 173 | 3 | 16 | 1 |
| 2 | PS01H | " " 4414 C266 | 67.4 | " " | 3 | 14 | 7 | 4 | 392 | 26,973 | 173 | 3 | 16 | 2 |
| 3 | PS01V | " " 4442 C265 | 67.4 | " " | 3 | 14 | 7 | 4 | 392 | 26,973 | 173 | 3 | 16 | 3 |
| 4 | PS01W | " " 4448 C265 | 70 | " " | 3 | 14 | 7 | 4 | 392 | 27,992 | 173 | 3 | 16 | 4 |
| 5 | PS01X | " " 4416 C266 | 67.4 | " " | 3 | 14 | 7 | 4 | 392 | 26,973 | 173 | 3 | 16 | 5 |
| 6 | PS01Y | " " 4451 C265 | 67.3 | " " | 3 | 14 | 7 | 4 | 392 | 26,934 | 173 | 3 | 16 | 6 |
| 7 | PS01Z | " " 4432 C266 | 69.6 | " " | 3 | 14 | 7 | 4 | 392 | 27,836 | 173 | 3 | 16 | 7 |
| 8 | PS02A | " " 4183 C273 | 67.5 | " " | 3 | 14 | 7 | 4 | 392 | 27,012 | 173 | 3 | 16 | 8 |
| 9 | PS02B | " " 4480 C267 | 68 | " " | 3 | 14 | 7 | 4 | 392 | 27,208 | 173 | 3 | 16 | 9 |
| 10 | PS02C | 1315 301 1736 C267 | 68 | " " | 3 | 14 | 7 | 4 | 392 | 27,208 | 173 | 3 | 16 | 10 |
| 11 | PS02D | 1315 020 4474 C266 | 67.3 | " " | 3 | 14 | 7 | 4 | 392 | 26,934 | 173 | 3 | 16 | 11 |
| 12 | PS02E | " " 4479 C266 | 67.3 | " " | 3 | 14 | 7 | 4 | 392 | 26,934 | 173 | 3 | 16 | 12 |
| 13 | PS02F | " " 4482 C265 | 70 | " " | 3 | 14 | 7 | 4 | 392 | 27,992 | 173 | 3 | 16 | 13 |
| 14 | PS02G | " " 4434 C266 | 70 | " " | 3 | 14 | 7 | 4 | 392 | 27,992 | 173 | 3 | 16 | 14 |
| 15 | PS02H | " " 4483 C265 | 67.3 | " " | 3 | 14 | 7 | 4 | 392 | 26,934 | 173 | 3 | 16 | 15 |
| 16 | PS02I | 1315 303 0838 C265 | 67.3 | " " | 3 | 14 | 7 | 4 | 392 | 26,934 | 173 | 3 | 16 | 16 |
| 17 | PS02J | 1315 020 4483 C266 | 69 | " " | 3 | 14 | 7 | 4 | 392 | 27,600 | 173 | 3 | 16 | 17 |
| 18 | PS02K | " " 4459 C267 | 65.3 | " " | 3 | 14 | 7 | 4 | 392 | 26,150 | 173 | 3 | 16 | 18 |
| 19 | PS02L | " " 4486 C266 | 69.6 | " " | 3 | 14 | 7 | 4 | 392 | 27,836 | 173 | 3 | 16 | 19 |
| 20 | PS02M | " " 4487 C266 | 69.6 | " " | 3 | 14 | 7 | 4 | 392 | 27,836 | 173 | 3 | 16 | 20 |
| 21 | PS02N | " " 4457 C265 | 67.4 | " " | 3 | 14 | 7 | 4 | 392 | 26,973 | 173 | 3 | 16 | 21 |
| 22 | PS02P | " " 4456 C266 | 67.4 | " " | 3 | 14 | 7 | 4 | 392 | 26,973 | 173 | 3 | 16 | 22 |
| 23 | | | | | | | | | | | | | | 23 |
| 24 | | | | | | | | | | | | | | 24 |
| 25 | | | | | | | | | | | | | | 25 |
| 26 | | | | | | | | | | | | | | 26 |
| 27 | | | | | | | | | | | | | | 27 |
| | | CARTRIDGE, 105 MM | | | | | | | | | | | | |
| 28 | RAP01 | 1315 020 4842 C444 | 67 | 37 1/2" X 6 1/2" | 3 | 14 | 9 | 3 | 378 | 25,865 | 129 | 3 | 13 | 28 |
| 29 | RAP02 | 1315 020 4844 C444 | 67 | " " | 3 | 14 | 9 | 3 | 378 | 25,865 | 129 | 3 | 13 | 29 |
| 30 | RAP03 | 1315 020 4847 C483 | 68.2 | " " | 3 | 14 | 9 | 3 | 378 | 26,119 | 129 | 3 | 13 | 30 |
| 31 | RAP04 | 1315 020 4849 C455 | 68 | " " | 3 | 14 | 9 | 3 | 378 | 26,043 | 129 | 3 | 13 | 31 |
| 32 | RAP05 | 1315 020 4851 C452 | 71 | " " | 3 | 14 | 9 | 3 | 378 | 27,177 | 129 | 3 | 13 | 32 |
| 33 | RAP06 | 1315 322 6369 C451 | 68 | " " | 3 | 14 | 9 | 3 | 378 | 26,043 | 129 | 3 | 13 | 33 |
| 34 | RAP07 | 1315 096 3062 C453 | 71 | " " | 3 | 14 | 9 | 3 | 378 | 27,177 | 129 | 3 | 13 | 34 |
| 35 | RAP08 | 1315 020 4837 C452 | 71 | " " | 3 | 14 | 9 | 3 | 378 | 27,177 | 129 | 3 | 13 | 35 |
| 36 | RAQ01 | 1315 344 2312 C488 | 65 | " " | 3 | 14 | 9 | 3 | 378 | 24,989 | 129 | 3 | 13 | 36 |
| 37 | RAQ02 | 1315 322 6361 C486 | 71 | " " | 3 | 14 | 9 | 3 | 378 | 27,177 | 129 | 3 | 13 | 37 |
| 38 | RAQ03 | 1315 020 4836 C481 | 71 | " " | 3 | 14 | 9 | 3 | 378 | 27,177 | 129 | 3 | 13 | 38 |
| 39 | RAQ04 | 1315 301 1785 C455 | 68 | " " | 3 | 14 | 9 | 3 | 378 | 26,843 | 129 | 3 | 13 | 39 |
| 40 | RAQ05 | 1315 020 4812 C484 | 71 | " " | 3 | 14 | 9 | 3 | 378 | 27,177 | 129 | 3 | 13 | 40 |
| 41 | RAQ06 | 1315 020 4810 C485 | 67 | " " | 3 | 14 | 9 | 3 | 378 | 25,885 | 129 | 3 | 13 | 41 |
| 42 | RAQ07 | 1315 020 4853 C485 | 67 | " " | 3 | 14 | 9 | 3 | 378 | 25,885 | 129 | 3 | 13 | 42 |
| 43 | RAQ08 | 1315 020 4805 C443 | 71 | " " | 3 | 14 | 9 | 3 | 378 | 27,177 | 129 | 3 | 13 | 43 |
| 44 | RAQ09 | 1315 020 4802 C444 | 71 | " " | 3 | 14 | 9 | 3 | 378 | 27,177 | 129 | 3 | 13 | 44 |
| 45 | RAQ10 | 1315 020 4800 C444 | 71 | " " | 3 | 14 | 9 | 3 | 378 | 27,177 | 129 | 3 | 13 | 45 |
| 46 | RAQ11 | 1315 020 4824 C444 | 71 | " " | 3 | 14 | 9 | 3 | 378 | 27,177 | 129 | 3 | 13 | 46 |
| 47 | RAQ12 | 1315 020 4788 C444 | 71 | " " | 3 | 14 | 9 | 3 | 378 | 27,177 | 129 | 3 | 13 | 47 |
| 48 | RAU01 | 1315 322 6368 C450 | 69 | " " | 3 | 14 | 9 | 3 | 378 | 26,821 | 129 | 3 | 13 | 48 |
| 49 | RI001 | 1315 301 1778 C443 | 71 | " " | 3 | 14 | 9 | 3 | 378 | 27,177 | 129 | 3 | 13 | 49 |
| 50 | RI002 | 1315 020 4780 C446 | 68 | " " | 3 | 14 | 9 | 3 | 378 | 25,387 | 129 | 3 | 13 | 50 |
| 51 | RI003 | 1315 020 4754 C444 | 69 | " " | 3 | 14 | 9 | 3 | 378 | 26,821 | 129 | 3 | 13 | 51 |
| 52 | RI004 | 1315 020 4781 C452 | 71 | " " | 3 | 14 | 9 | 3 | 378 | 27,177 | 129 | 3 | 13 | 52 |
| 53 | RI005 | 1315 020 4782 C445 | 69 | " " | 3 | 14 | 9 | 3 | 378 | 26,821 | 129 | 3 | 13 | 53 |
| 54 | RI006 | 1315 020 3483 C453 | 71 | " " | 3 | 14 | 9 | 3 | 378 | 27,177 | 129 | 3 | 13 | 54 |

| LINE | AIC SYMBOL | FEDERAL STOCK NO & DEPT OF DEFENSE IDENTIFICATION CODE | PKG WT (LBS) | APPROX PACKAGE DIMENSIONS | PAGE PLANS, SECT. ETC | CNTNS IN WIDTH OF TRUCK | CNTNS IN LENGTH OF TRUCK | CNTNS IN HEIGHT OF TRUCK | TOTAL CUBES | TOTAL WT. OF LOAD (Incl dunnage) | MATERIALS | | | LINE |
|----------------------------|------------|--|--------------|---------------------------|-----------------------|-------------------------|--------------------------|--------------------------|-------------|----------------------------------|----------------|-----------|-----------|------|
| | | | | | | | | | | | LUMBER SQ. FT. | NAILS LBS | STRAP LBS | |
| CARTRIDGE, 105 MM (CONT) | | | | | | | | | | | | | | |
| 1 | R1QPH | 1315 020 4784 C455 | 71 | 37 1/2" L X 8 1/2" D | 3 | 14 | 9 | 3 | 378 | 27,177 | 129 | 3 | 13 | 1 |
| 2 | R1QQW | 1315 020 4785 C451 | 71 | " " | 3 | 14 | 9 | 3 | 378 | 27,177 | 129 | 3 | 13 | 2 |
| 3 | R1QHW | 1315 020 4786 C456 | 71 | " " | 3 | 14 | 9 | 3 | 378 | 27,177 | 129 | 3 | 13 | 3 |
| 4 | R1QSH | 1315 020 4777 C444 | 71 | " " | 3 | 14 | 9 | 3 | 378 | 27,177 | 129 | 3 | 13 | 4 |
| 5 | R1QVM | 1315 020 4778 C444 | 71 | " " | 3 | 14 | 9 | 3 | 378 | 27,177 | 129 | 3 | 13 | 5 |
| 6 | R1QVM | 1315 020 4779 C443 | 71 | " " | 3 | 14 | 9 | 3 | 378 | 27,177 | 129 | 3 | 13 | 6 |
| 7 | R1UUN | 1315 020 4787 C445 | 67 | " " | 3 | 14 | 9 | 3 | 378 | 25,863 | 129 | 3 | 13 | 7 |
| 8 | R1UUM | 1315 694 1996 C454 | 69 | " " | 3 | 14 | 9 | 3 | 378 | 26,421 | 129 | 3 | 13 | 8 |
| 9 | R1UUM | 1315 020 4790 C454 | 69 | " " | 3 | 14 | 9 | 3 | 378 | 26,421 | 129 | 3 | 13 | 9 |
| 10 | | | | | | | | | | | | | | 10 |
| 11 | | | | | | | | | | | | | | 11 |
| 12 | | | | | | | | | | | | | | 12 |
| 13 | | | | | | | | | | | | | | 13 |
| 14 | | | | | | | | | | | | | | 14 |
| 15 | | | | | | | | | | | | | | 15 |
| CHANGE, PROPELLING 135 MM | | | | | | | | | | | | | | |
| 16 | P2EAB | 1320 020 4369 D480 | 54.6 | 42 1/2" L X 8 1/2" D | 4 | 10 & 11 | 8 | 4 0 11 3 0 10 | 584 | 32,038 | 93 | 2 | 20 | 16 |
| 17 | P2EAG | 1320 020 4371 D480 | 54.6 | 42 1/2" L X 8 1/2" D | 4 | 10 & 11 | 8 | 4 0 11 3 0 10 | 582 | 32,038 | 93 | 2 | 20 | 17 |
| 18 | R2HAD | 1320 020 4876 D540 | 28.5 | 37 1/2" L X 6 1/2" D | 4 | 13 & 14 | 9 | 4 0 12 4 0 13 | 972 | 27,958 | 93 | 2 | 19 | 18 |
| 19 | R2HAK | 1320 020 4873 D540 | 29 | 37 1/2" L X 6 1/2" D | 4 | 13 & 14 | 9 | 4 0 14 4 0 13 | 972 | 28,441 | 93 | 2 | 19 | 19 |
| 20 | R2HBD | 1320 020 4877 D541 | 30.5 | 27 1/2" L X 7 1/2" D | 4 | 11 & 12 | 12 | 4 0 12 3 0 11 | 978 | 28,889 | 89 | 2 | 18 | 20 |
| 21 | R2HCB | 1320 020 4878 D541 | 30.5 | 27 1/2" L X 7 1/2" D | 4 | 11 & 12 | 12 | 4 0 12 3 0 11 | 978 | 28,889 | 89 | 2 | 18 | 21 |
| 22 | R2HCH | 1320 020 4880 D541 | 31 | 26 1/2" L X 8 1/2" D | 4 | 10 | 12 | 8 | 960 | 30,025 | 96 | 2 | 18 | 22 |
| 23 | R2HCG | 1320 020 4879 D541 | 30.5 | 27 1/2" L X 7 1/2" D | 4 | 11 & 12 | 12 | 4 0 12 3 0 11 | 972 | 28,889 | 89 | 2 | 18 | 23 |
| 24 | | | | | | | | | | | | | | 24 |
| 25 | | | | | | | | | | | | | | 25 |
| 26 | | | | | | | | | | | | | | 26 |
| CHANGE, PROPELLING 8" | | | | | | | | | | | | | | |
| 27 | P2KAA | 1320 020 4372 D655 | 101 | 55" L X 10 1/2" D | 4 | 8 | 6 | 6 | 288 | 29,350 | 95 | 2 | 22 | 27 |
| 28 | P2KBA | 1320 020 4373 D655 | 146 | 63" L X 10 1/2" D | 4 | 8 | 5 | 5 | 208 | 29,452 | 91 | 2 | 25 | 28 |
| 29 | P2OAB | 1320 020 4374 D675 | 31.2 | 26 1/2" L X 8 1/2" D | 4 | 10 & 11 | 12 | 4 0 10 4 0 11 | 1808 | 31,450 | 98 | 2 | 18 | 29 |
| 30 | P2OBB | 1320 020 4375 D676 | 51.9 | 29 1/2" L X 9 1/2" D | 4 | 9 | 12 | 5 | 540 | 28,874 | 89 | 2 | 18 | 30 |
| 31 | P2OBF | 1320 020 4377 D676 | 77 | 55 1/2" L X 10 1/2" D | 4 | 8 | 6 | 8 | 384 | 29,813 | 128 | 2 | 23 | 31 |
| 32 | | | | | | | | | | | | | | 32 |
| 33 | | | | | | | | | | | | | | 33 |
| 34 | | | | | | | | | | | | | | 34 |
| CHANGE, PROPELLING, 240 MM | | | | | | | | | | | | | | |
| 35 | P2SAA | 1320 020 4379 D700 | 105 | 55" L X 10 1/2" D | 4 | 8 | 6 | 5 | 240 | 25,439 | 86 | 2 | 22 | 35 |
| 36 | P2SAB | 1320 096 3051 D700 | 167 | 55" L X 10 1/2" D | 4 | 8 | 6 | 5 | 240 | 25,919 | 86 | 2 | 22 | 36 |
| 37 | | | | | | | | | | | | | | 37 |
| 38 | | | | | | | | | | | | | | 38 |
| 39 | | | | | | | | | | | | | | 39 |
| CHANGE, PROPELLING, 280 MM | | | | | | | | | | | | | | |
| 40 | P2TAA | 1320 020 4380 D716 | 190 | 80" L X 10 1/2" D | 4 | 8 | 4 | 5 | 160 | 36,848 | 91 | 2 | 18 | 40 |
| 41 | P2TAB | 1320 308 5558 D716 | 200 | 80" L X 11 1/2" D | 4 | 7 & 8 | 4 | 3 8 6 | 148 | 29,855 | 94 | 2 | 18 | 41 |
| 42 | P2TBA | 1320 020 4381 D715 | 221 | 84" L X 12 1/2" D | 4 | 7 | 4 | 4 | 112 | 34,997 | 89 | 2 | 20 | 42 |
| 43 | | | | | | | | | | | | | | 43 |
| 44 | | | | | | | | | | | | | | 44 |
| 45 | | | | | | | | | | | | | | 45 |
| ROCKET, 4.5" | | | | | | | | | | | | | | |
| 46 | S9CKC | 1340 020 6096 M620 | 70 | 37 1/2" L X 6 1/2" D | 3 | 14 | 9 | 3 | 378 | 26,799 | 129 | 3 | 13 | 46 |
| 47 | S9CLW | 1340 020 6099 M629 | 70 | 37 1/2" L X 6 1/2" D | 3 | 14 | 9 | 3 | 378 | 26,799 | 129 | 3 | 13 | 47 |
| 48 | S9H6H | 1340 020 6101 M620 | 70 | 37 1/2" L X 6 1/2" D | 3 | 14 | 9 | 3 | 378 | 26,799 | 129 | 3 | 13 | 48 |
| 49 | S9H6H | 1340 020 6103 M620 | 70 | 37 1/2" L X 6 1/2" D | 3 | 14 | 9 | 3 | 378 | 26,799 | 129 | 3 | 13 | 49 |
| 50 | | | | | | | | | | | | | | 50 |

| L I N E | AIC SYMBOL | FEDERAL STOCK NO. & DEPT OF DEFENSE IDENTIFICATION CODE | PKG WT (LBS) | APPROX PACKAGE DIMENSIONS | PAGE PLANS, SECT. ETC | CNTRS IN WIDTH OF TRUCK | CNTRS IN LENGTH OF TRUCK | CNTRS IN HEIGHT OF TRUCK | TOTAL CNTRS | TOTAL WT OF LOAD (INCL DUNNAGE) | MATERIALS | | | L I N E |
|------------------|---------------|---|--------------------|----------------------------------|-----------------------------|-------------------------------|--------------------------------|--------------------------------|----------------|---------------------------------------|-----------------|--------------|--------------|------------------|
| | | | | | | | | | | | LUMBER BD FT | NAILS LBS | STRAP LBS | |
| 1 | | | | | | | | | | | | | | 1 |
| 2 | | BLACK POWDER, METAL DRUM 25 LB | | | | | | | | | | | | 2 |
| 3 | | | 28 | 14" L X 9 1/2" D | 5 | 0 & 9 | 23 | 5 & 6 | 1061 | 30,149 | 174 | 3 | 13 | 3 |
| 4 | | | | | | | | | | | | | | 4 |
| 5 | | | | | | | | | | | | | | 5 |
| 6 | | CHARGE, PROPELLING, 75 MM & 105 MM IN METAL DRUM | | | | | | | | | | | | 6 |
| 7 | | | 127 | 30 1/2" L X 15 1/2" D | 6 | 5 & 6 | 20 | 1 & 2 | 227 | 29,572 | 209 | 4 | 17 | 7 |
| 8 | | | | | | | | | | | | | | 8 |
| 9 | | | | | | | | | | | | | | 9 |
| 10 | | SOLID PROPELLANT, BOX STEEL 220R MK VIII | | | | | | | | | | | | 10 |
| 11 | | | 150 | 16 1/2" X 9 1/2" X 20 1/2" | 7 | 9 | 21 | 1 | 189 | 20,597 | 90 | 2 | | 11 |
| 12 | | | | | | | | | | | | | | 12 |
| 13 | | | | | | | | | | | | | | 13 |
| 14 | | SOLID PROPELLANT, U 7 VDM BOX (LARGE MOUTH) | | | | | | | | | | | | 14 |
| 15 | | | 132 | 14 1/16" X 17 1/16" X 20 3/4" | 8 | 5 | 23 | 2 | 230 | 30,640 | 114 | 3 | | 15 |
| 16 | | | | | | | | | | | | | | 16 |
| 17 | | | | | | | | | | | | | | 17 |
| 18 | | SOLID PROPELLANT, U 17 VDM BOX (SMALL MOUTH) | | | | | | | | | | | | 18 |
| 19 | | | 138 | 16 1/2" X 16 1/2" X 22 1/2" | 9 | 5 | 19 | 2 & 4 | 215 | 29,431 | 155 | 4 | 14 | 19 |
| 20 | | | | | | | | | | | | | | 20 |
| 21 | | | | | | | | | | | | | | 21 |
| 22 | | SOLID PROPELLANT, U 10 VDM BOX | | | | | | | | | | | | 22 |
| 23 | | | 51 | 13 1/2" X 13 1/2" X 20 1/2" | 10 | 6 | 24 | 4 | 376 | 29,890 | 125 | 3 | | 23 |
| 24 | | | | | | | | | | | | | | 24 |
| 25 | | | | | | | | | | | | | | 25 |
| 26 | | SOLID PROPELLANT, U 24 VDM BOX | | | | | | | | | | | | 26 |
| 27 | | | 100 | 17 1/2" X 16 1/2" X 20" | 11 | 5 | 22 | 1 & 4 | 145 | 29,200 | 133 | 4 | 16 | 27 |
| 28 | | | | | | | | | | | | | | 28 |
| 29 | | | | | | | | | | | | | | 29 |

