



TRUCKLOADING OF BOMBS

INDEX BY ITEM

<u>ITEM</u>	<u>PAGE</u>	<u>ITEM</u>	<u>PAGE</u>
1000 LB. A.P.	2	500 LB. SAP	5
1600 LB. A.P.	2	1000 LB. SAP	6
4 LB. FRAG.	3	250 LB. T.I.	5
90 LB. FRAG.	4	150 LB. PHOTOFLASH	5
220 LB. FRAG.	5	750 LB. DEMO	8
260 LB. FRAG.	5	250 LB. MCLBI	9
250 LB. GP.	5	500 LB. MCLBI	10
500 LB. GP.	5	1000 LB. MCLBI	11
1000 LB. GP.	6		
2000 LB. GP.	7		

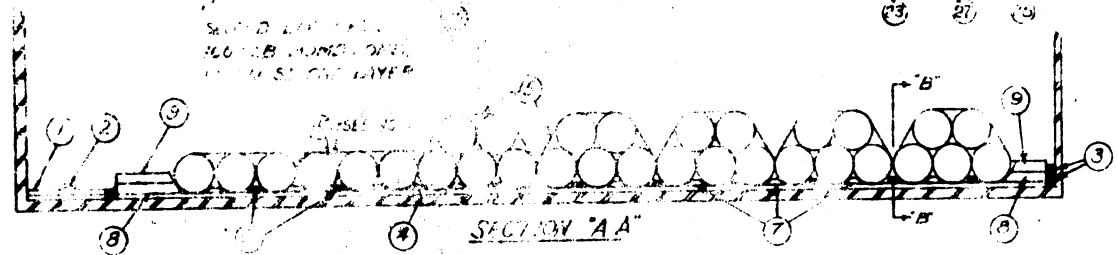
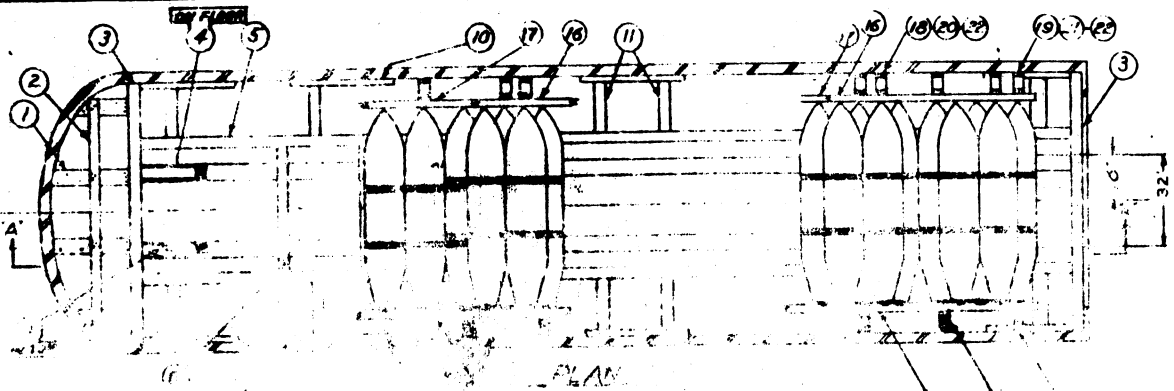
GENERAL NOTES

- ① MOTOR CARRIERS ARE RESPONSIBLE FOR SUPERVISION OVER TOTAL WEIGHT AND DISTRIBUTION OF LOAD ON THEIR VEHICLES. INSTALLATION SHOULD REQUIRE ORIGIN CARRIER TO PROVIDE SUCH SUPERVISION TO ASSURE COMPLIANCE WITH LAWS OF ALL STATES THROUGH WHICH ANY TRUCK LOAD SHIPMENT WILL PASS.
- ② NAILING INTO TRAILER SIDE WALLS WILL BE AVOIDED AS NO EFFECTIVE ANCHORING CAN BE EXPECTED AND FALSE SECURITY CAN BE DANGEROUS. NAILING INTO TRAILER FLOORS WILL BE AVOIDED WHENEVER POSSIBLE. ALL NAILING CAN NORMALLY BE ACCOMPLISHED WITHIN THE BLOCKING LUMBER.
- ③ ALL BRACING SHOULD BE TO THE STRONG POINTS OF THE TRAILER, THAT IS, THE FLOOR, OR AGAINST SIDE FRAME MEMBERS AT THE FLOOR LINE. SECONDARY STRONG POINTS ARE AGAINST THE SIDE FRAME MEMBERS AT THE ROOF LINE. BRACING AGAINST SIDE MEMBERS AT POINTS BETWEEN FLOOR AND ROOF IS NOT RECOMMENDED.
- ④ THIS DRAWING APPLIES TO TRAILERS WITH WOOD, METAL AND WOOD AND METAL FLOORS.
- ⑤ IF ADDITIONAL BOMBS ARE REQUIRED IN ORDER TO MEET LOAD WEIGHT REQUIREMENTS, LOAD HEIGHT MAY BE INCREASED.
- ⑥ LOADS SHOWN HEREIN ARE BASED ON TRAILERS 30'-0" LONG X 8'-0" WIDE OUTSIDE DIMENSIONS. PRINCIPLES SHOWN WILL BE APPLIED TO TRAILERS OF OTHER DIMENSIONS.
- ⑦ NUMBER OF BOMBS PER LOAD SHOWN HEREIN IS TYPICAL ONLY. BOMBS MAY BE ADDED TO OR SUBTRACTED FROM LOAD TO SUIT TOTAL WEIGHT REQUIREMENTS.
- ⑧ IF THE FRONT TRAILER IS PROVIDED WITH AN ANCHORING HEAD POST AND IS AT FRONT POSITION, ANCHORING LOADS SHALL BE BILMHE 11.

MATERIAL SPECIFICATIONS

LUMBER: SEE PARA. 3400, ORDM. 3-4, VOL. 2
DATED 15 APRIL, 1956
NAILS: COMMON, CEMENT COATED,
FED. SPEC. FF-N-10.
ALT.: UNUSUALLY GROOVED NAILS
OF SAME SIZE.
STRAPPING: 1/2" x .035" TYPE I, CLASS A OR C,
FED. SPEC. QQ-S-781A.

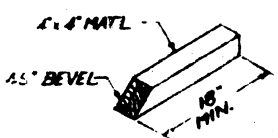
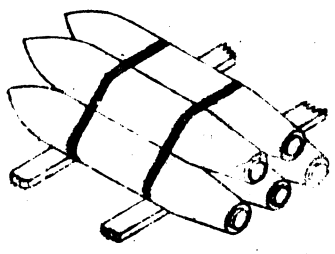
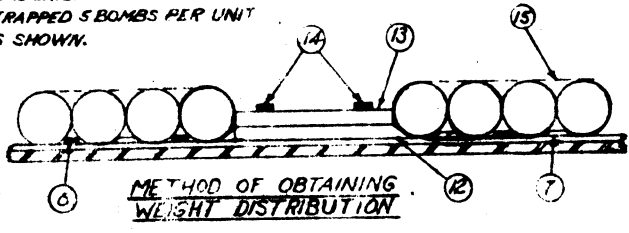
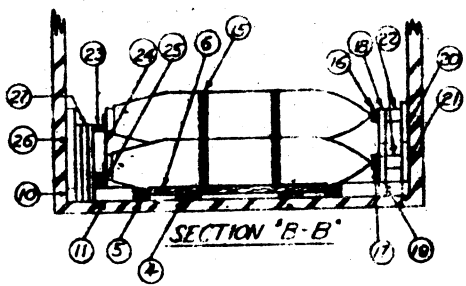
TRUCKLOADING OF BOMBS			
DESIGNED BY JCR	CHECKED BY CRJ	<i>WBD [Signature]</i>	
DATE CRJ			
REVISIONS			
		<i>James D. Boche</i>	
		<i>[Signature]</i>	
ORDNANCE CORPS U.S.A.			
5 OCTOBER 1956			
CLASS	SECTION	DRAWING	FILE
19	48	4018	11B1000



LOAD AS SHOWN (WOOD FLOOR) 1000* A.P.
 BOMBS APPROX. WT. (INCL. DUNNAGE)
 21 11650 LBS.
 MAX. WT. PER BOMB 550 LBS.

NOTE: FOR ONE LAYER LOADS BOMBS WILL BE STRAPPED 4 BOMBS PER UNIT UNITS ARE INTERLOCKED BY MAKING ONE BOMB COMMON TO 2 UNITS.
 ON 2 LAYER LOADS BOMBS WILL BE STRAPPED 5 BOMBS PER UNIT AS SHOWN.

LOAD AS SHOWN, WOOD FLOOR 1000* A.P.
 BOMBS APPROX. WT. INCL. DUNNAGE
 31 31,304 LBS.
 MAX. WT. PER BOMB 991 LBS.



DETAIL OF 4\"/>

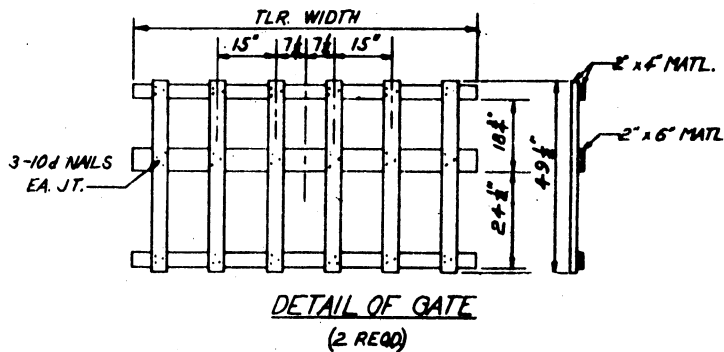
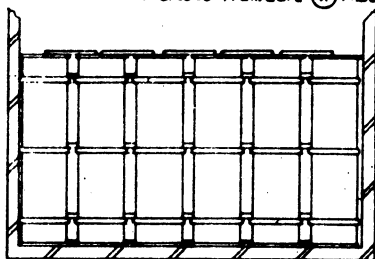
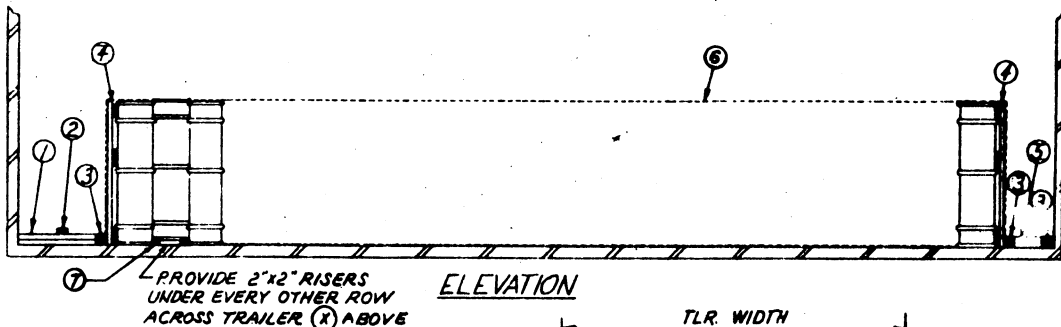
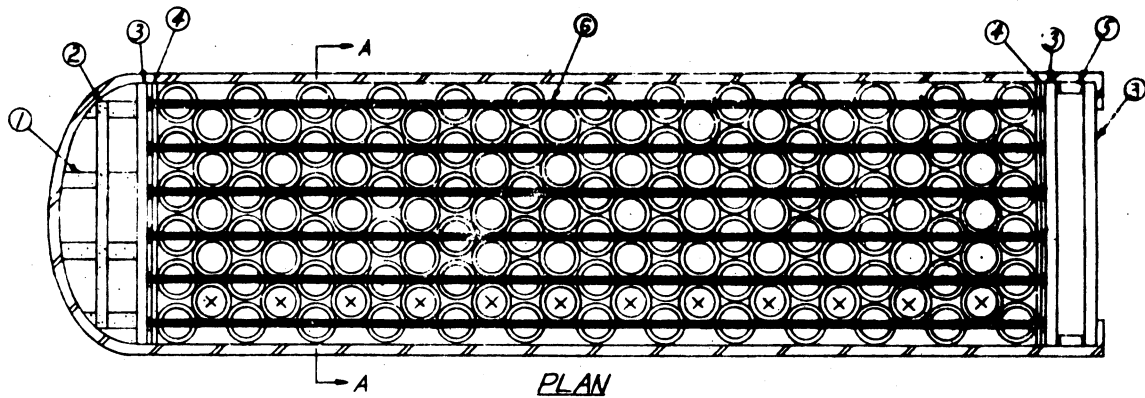


DETAIL OF 2\"/>

DESCRIPTION	1000 LB	1500 LB
	2	2

KEY NUMBERS & NOTES

- 1 2x6\"/>
- 2 2x4\"/>
- 3 4\"/>
- 4 2x6\"/>
- 5 4x4\"/>
- 6 2x6\"/>
- 7 2x6\"/>
- 8 4x4\"/>
- 9 4x4\"/>
- 10 2x4\"/>
- 11 4x4\"/>
- 12 4x4\"/>
- 13 4x4\"/>
- 14 4x4\"/>
- 15 1/2\"/>
- 16 2x4\"/>
- 17 2x4\"/>
- 18 2x4\"/>
- 19 2x4\"/>
- 20 2x4\"/>
- 21 2x4\"/>
- 22 4x4\"/>
- 23 2x4\"/>
- 24 2x4\"/>
- 25 2x4\"/>
- 26 2x4\"/>
- 27 2x4\"/>

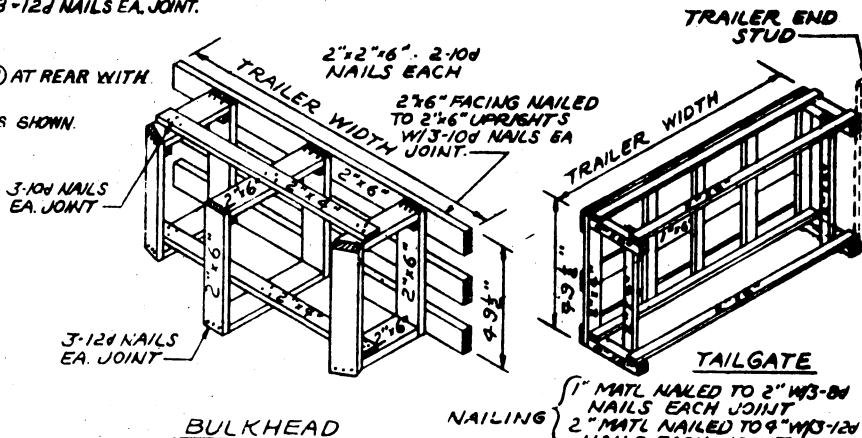
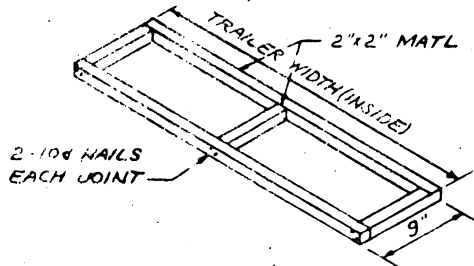


KEY NUMBERS & NOTES

- ① - 2"x6", CUT TO FIT, DOUBLED, (4 REQD) NAIL TOGETHER W/1-10d NAIL EVERY 6". TO NAIL TO PC ③ W/3-12d NAILS EA. JT. POSITION AGAINST STRONG POINTS IN NOSE OF TRAILER.
- ② - 2"x4", CUT TO FIT, (1 REQD) NAIL TO EA. PC ① W/3-12d NAILS EA. JOINT.
- ③ - 4"x4" TLR. WIDTH, (3 REQD) POSITION AS SHOWN.
- ④ - GATE, (SEE DETAIL) 2 REQD.
- ⑤ - 4"x4", CUT TO FIT, (2 REQD) TO NAIL TO PIECES ③ AT REAR WITH 3-12d NAILS EA. JT.
- ⑥ - 1 1/2" x .035" x REQD. LENGTH, (6 REQD) POSITION AS SHOWN.
- ⑦ - RISER (12 REQD) SEE DETAIL.

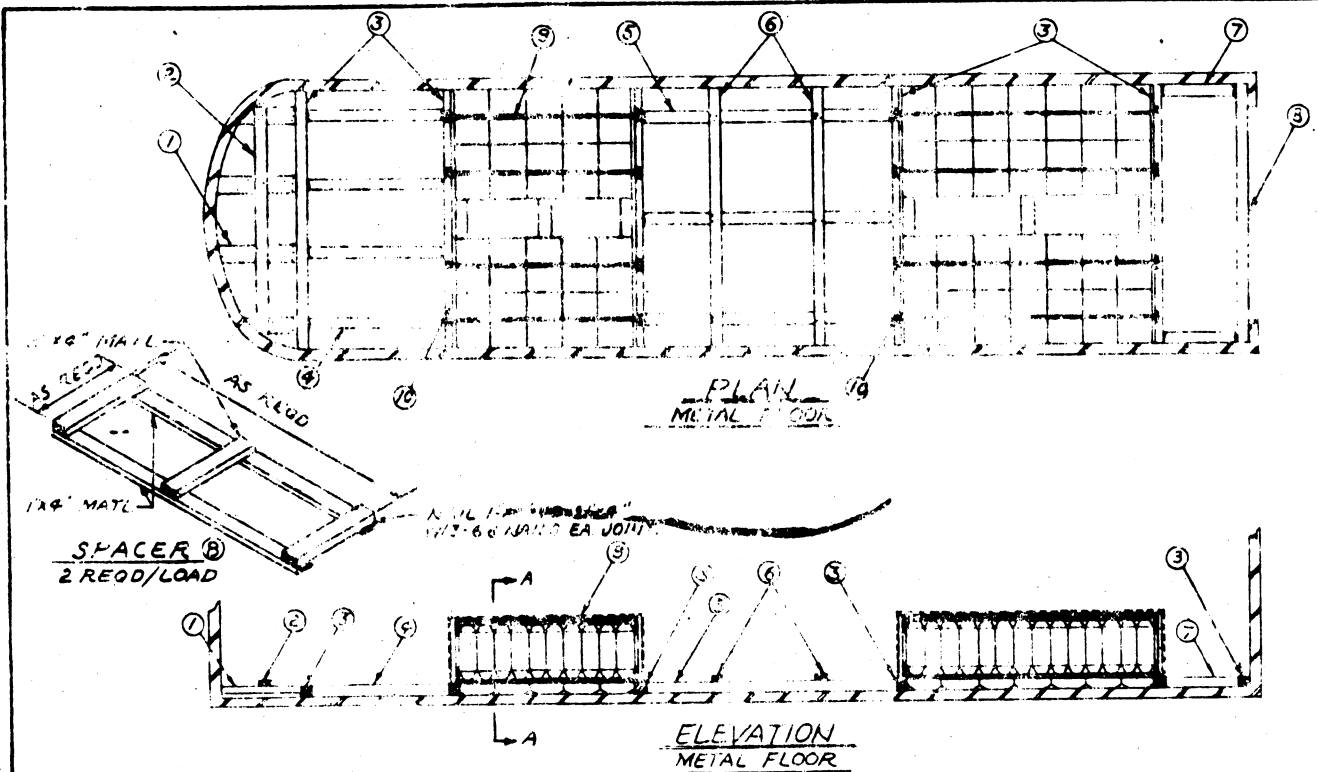
LOAD AS SHOWN

DRUMS	APPROX. WT. (INCL. DUNNAGE)
138	30,451
WT. PER DRUM = 217	



BOMB, FRAGMENTATION, 4 LB.

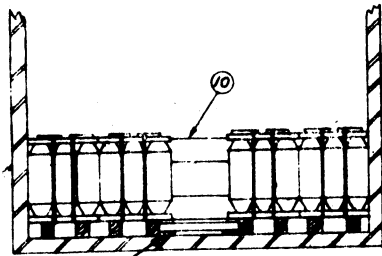
WHEN USING THIS METHOD OMIT PCS 1 THRU 7.



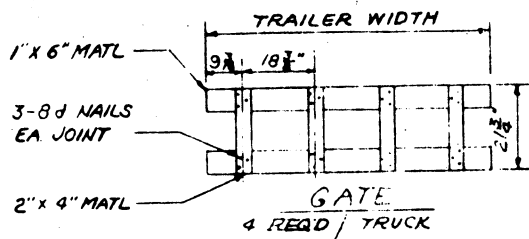
ELEVATION
METAL FLOOR

KEY NUMBERS & NOTES

- ① 2"x6" CUT TO FIT, DOUBLED (4 REQD) NAIL TOGETHER W/1-12d NAIL EVERY 6". TOENAIL TO ⑤ W/3-12d NAILS EA JOINT POSITION AGAINST STRONG POINTS IN NOSE OF TRAILER
- ② 2"x4", CUT TO FIT (1 REQD) NAIL TO EA ① W/3-12d NAILS
- ③ 4"x4" X TRAILER WIDTH (6 REQD) POSITION AS SHOWN.
- ④ 4"x4" CUT TO FIT (4 REQD) TOENAIL TO ③ W/3-12d NAILS EA JOINT
- ⑤ 4"x6" CUT TO FIT (3 REQD) POSITION AS SHOWN. TOENAIL TO ③ W/3-12d NAILS EA JOINT.
- ⑥ 2"x4" X TRAILER WIDTH (2 REQD) NAIL TO EA ⑤ W/3-12d NAILS.
- ⑦ 4"x4" CUT TO FIT (2 REQD) TOENAIL TO PCS ③ W/3-12d NAILS EA JT.
- ⑧ SPACER (2 REQD PER LOAD) SEE DETAIL.
- ⑨ 1 1/2" X .035" X REQD LENGTH (8 REQD) POSITION AS SHOWN.
- ⑩ GATE, (SEE DETAIL) 4 REQD PER TRUCK.
- ⑪ 2"x6"x24" DOUBLED (12 REQD) NAIL BOTTOM PIECE TO FLOOR W/6-16d NAILS. NAIL TOP PIECE TO ONE BELOW IN LIKE MANNER. POSITION AS SHOWN.
- ⑫ 4"x4" X TRAILER WIDTH (4 REQD) POSITION AS SHOWN.

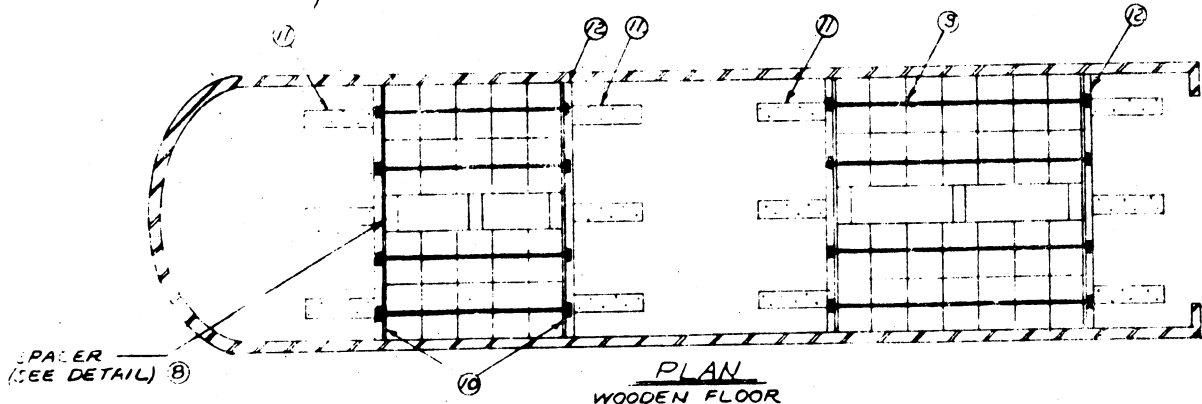


SECTION A-A
SPACER (SEE DETAIL) ⑧

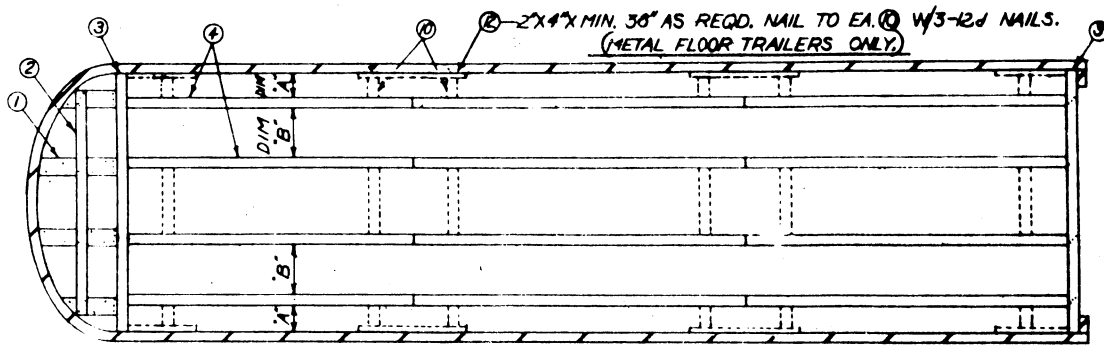


GATE
4 REQD / TRUCK

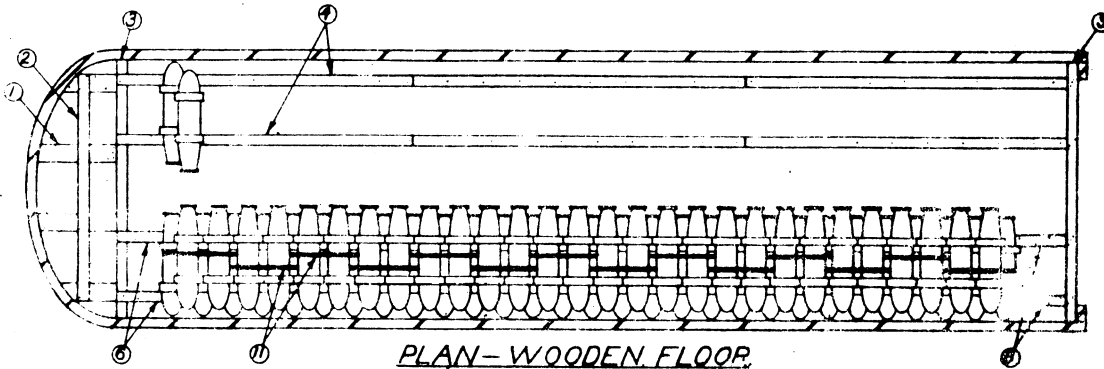
LOAD AS SHOWN (WOOD FLOOR)
PALLETS APPROX WT (INCL DUNNAGE)
48 26,906
6/PALLET - WT 554 LBS.



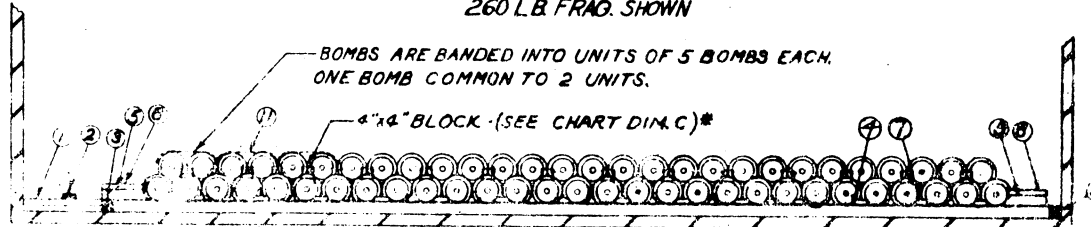
BOMB, FRAGMENTATION, 90 LB.



PLAN - FLOOR DUNNAGE



PLAN - WOODEN FLOOR
260 LB FRAG. SHOWN



ELEVATION - WOODEN FLOOR
260 LB FRAG. SHOWN

① THESE BOMBS ARE LOADED IN TRAILERS 2 WIDE W/TAIL OF BOMBS IN ONE ROW CENTERED BETWEEN TAILS OF BOMBS IN ADJACENT ROW.

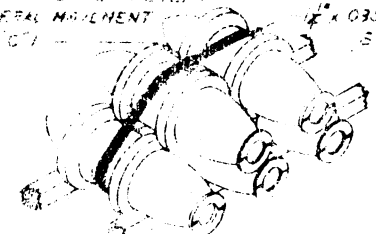
KEY NUMBERS & NOTES

- ① 2x4x MIN. 36" (AS REQD.) NAIL TOGETHER W/1-10d NAIL EVERY 6". TO NAIL TO 2x4x MIN. 36" NAILS EA JOINT. POSITION AGAINST STRONG POINTS IN NOSE OF TRAILER.
- ② 2x4x MIN. 36" (AS REQD.) NAIL TO 2x4x MIN. 36" NAILS. EA JOINT.
- ③ 2x4x TRAILER W/1-1/2" REQD. POSITION AS SHOWN.
- ④ 4x4x 12" TO FIT (AS REQD.) NAIL TO FLOOR W/1-40d NAIL EVERY 12" WHEN LOADING METAL TRAILERS. 1/2" TO NAIL TO ③ W/3-12d NAILS EA JOINT.
- ⑤ 2x4x MIN. 36" (AS REQD.) NAIL TO ④ W/4-50d NAILS. (SEE DETAIL.)
- ⑥ 2x4x 12" TO FIT (AS REQD.) NAIL TO ⑤ W/4-12d NAILS.
- ⑦ 2x4x 12" TO FIT (AS REQD.) NAIL TO ⑥ W/3-12d NAILS. (SEE DETAIL.)
- ⑧ 2x4x 12" W/36" (AS REQD.) NAIL TO ⑦ W/1-40d NAIL EVERY 6". BEVEL 45° EA. END.
- ⑨ 2x4x 12" W/36" (AS REQD.) NAIL TO ⑧ W/1-10d NAIL EVERY 6".
- ⑩ 2x4x 12" TO FIT (AS REQD.) NAIL TO ⑨ W/3-12d NAILS EA JOINT.
- ⑪ 2x4x 12" (AS REQD.) WITH 3/8" STEEL STRAPPING. (AS REQD.) 5 BOMB UNITS.

LOADING PROCEDURE

BOMBS	NO. OF BOMBS	APPROX. WT. (INCL. DUNNAGE)
220 LB FRAG.	114	26,293 LBS.
260 LB FRAG.	114	31,423 LBS.
250 LB GP	100	27,853 LBS.
500 LB GP	50	29,854 LBS.
500 LB SAP	50	30,270 LBS.
250 LB T/I	100	28,587 LBS.
150 LB PHOTOFLASH	152	26,356 LBS.

① NAIL TO PREVENT
REALIGNMENT



METHOD OF BANDING
SECOND LAYER

BOMB	DIM. A	DIM. B	DIM. C	DIM. D
220 LB FRAG	5 1/2"	17"	8 1/2"	9 1/2"
260 LB FRAG	5 1/2"	17"	6 1/2"	9 1/2"
250 LB GP	7 1/2"	17"	8 1/2"	10 1/2"
500 LB GP	12"	17"	8 1/2"	12 1/2"
500 LB SAP	12 1/2"	17"	8 1/2"	11 1/2"
250 LB T/I	8"	17"	8 1/2"	10 1/2"
150 LB PHOTOFLASH	8 1/2"	17"	8 1/2"	10 1/2"

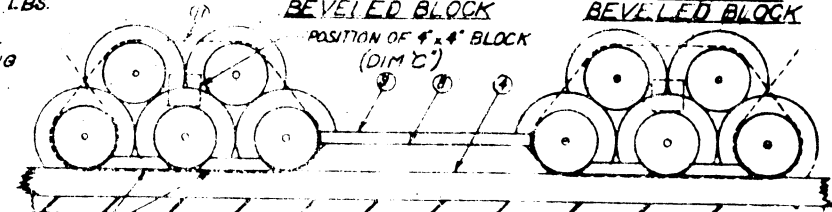
* SEE DETAIL - METHOD OF BANDING SECOND LAYER



⑥ DETAIL OF 4x4
BEVELED BLOCK

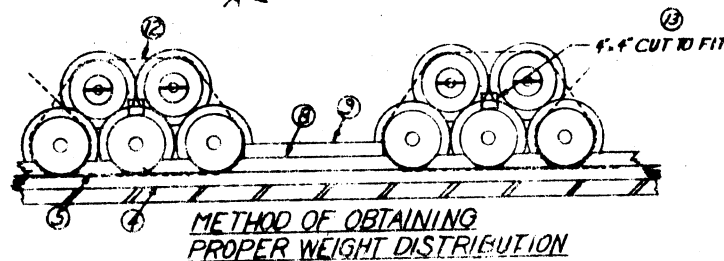
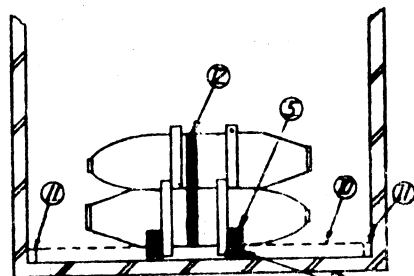
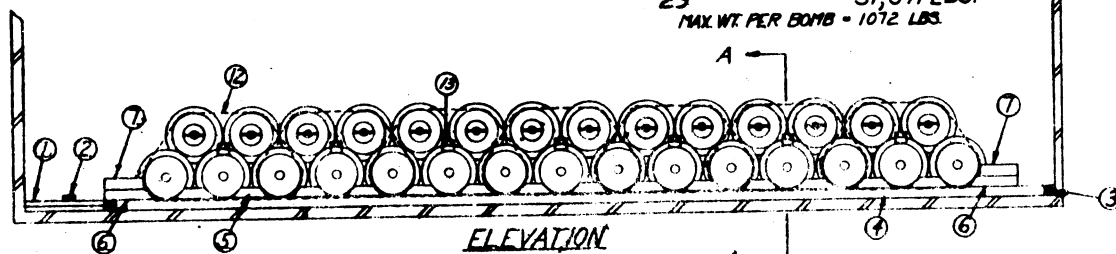
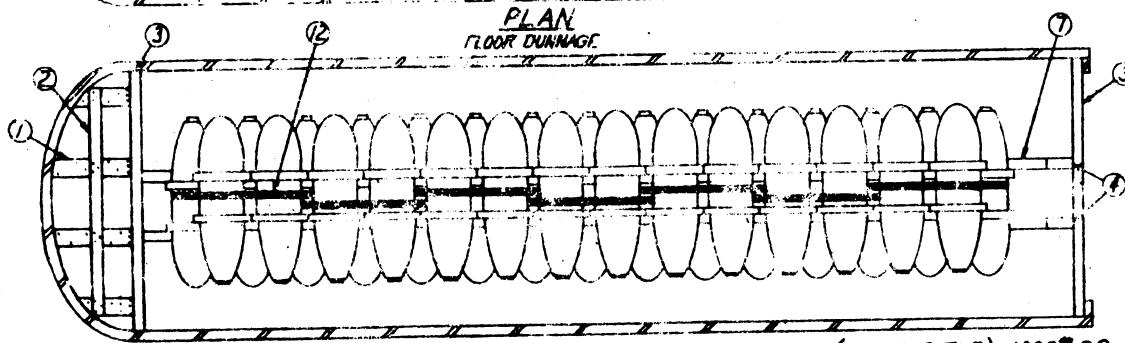
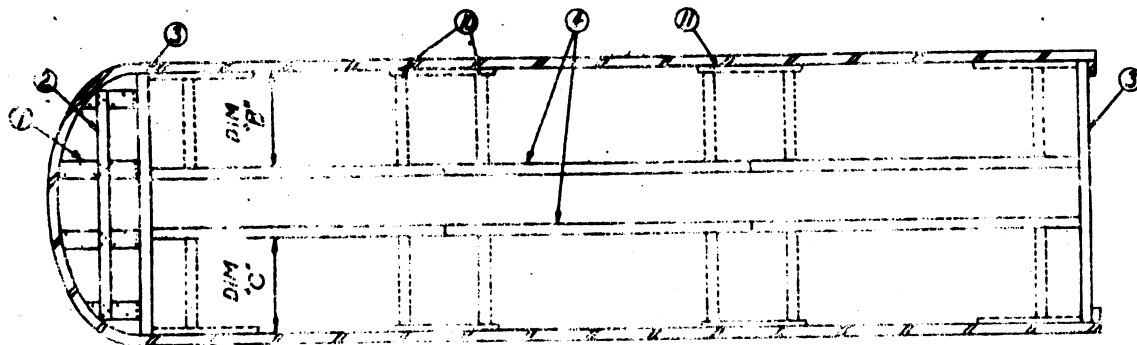


⑦ DETAIL OF 2x4
BEVELED BLOCK

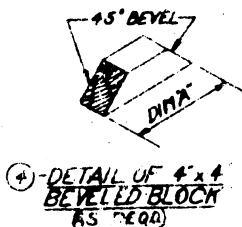


METHOD OF OBTAINING PROPER
WEIGHT DISTRIBUTION

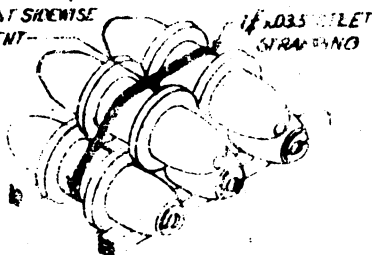
BOMBS: FRAGMENTATION, 220 & 260 LB; GP 250 & 500 LB;
SAP, 500 LB; T/I, 250 LB; PHOTOFLASH, 150 LB.



DIMENSION CHART		
DIM	1,000 LB GP	1,000 LBS AP
A	15 1/2"	13 3/4"
B	33 1/2"	34"
C	31 1/2"	30 3/4"



⑬ CUT TO FIT TO PREVENT SIDEWISE MOVEMENT



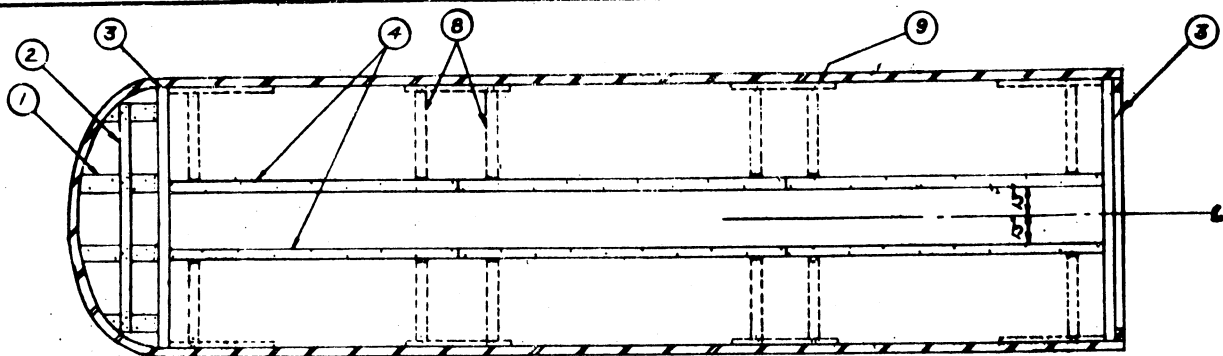
METHOD OF BANDING SECOND LAYER



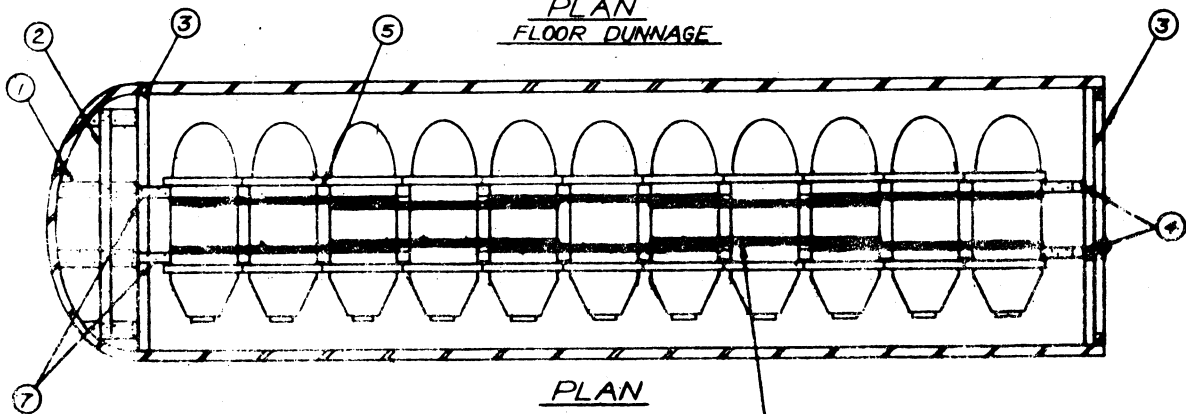
KEY NUMBERS & NOTES

- ① - 2" x 6", CUT TO FIT, DOUBLED, (4 REQD) NAIL TOGETHER W/ 10d NAIL EVERY 6" TO NAIL TO FL. ③ W/ 3 12d NAILS EA. JT POSITION AGAINST STRONG POINTS IN NOSE OF FLR.
- ② - 2" x 4", CUT TO FIT, (1 REQD) NAIL TO EA. PC ① W/ 3-12d NAILS.
- ③ - 4" x 4" x TLR WIDTH, (2 REQD) POSITION AS SHOWN
- ④ - 4" x 4", CUT TO FIT, (2 REQD) NAIL TO FLOOR W/ 1 10d NAIL EVERY 12" WHEN LEADING METAL FLOORED TRAILERS, OMIT NAILS & END PCS ② & ③
- ⑤ - 4" x 4" CUT TO FIT, (AS REQD) NAIL TO PC ④ W/ 3-12d NAILS. BEVEL 45° EA. END.
- ⑥ - 4" x 4" x 18" MIN, (4 REQD) NAIL TO PC ④ W/ 4 10d NAILS. BEVEL 45° ONE END.
- ⑦ - 4" x 4", CUT TO FIT, (4 REQD) NAIL TO PC ⑥ W/ 4-10d NAILS.
- ⑧ - 4" x 4", CUT TO FIT, (2 REQD) BEVEL 45° EA. END NAIL TO PC ⑥ W/ 4-10d NAIL EVERY 6"
- ⑨ - 4" x 4", CUT TO FIT, (2 REQD) NAIL TO PC ⑥ W/ 4-10d NAIL EVERY 6"
- ⑩ - 4" x 4", CUT TO FIT, (2 REQD) PER JOINT IN PC ⑥. TO NAIL TO PC ④ W/ 3-12d NAILS EA. JT. USED ON METAL FLOORED TRAILERS ONE
- ⑪ - 2" x 4" x 16" MIN (AS REQD) NAIL TO EA. PC ② W/ 3-12d NAILS USED ON METAL FLOORED TRAILERS ONLY
- ⑫ - 1 1/2" x .035" x REQD LENGTH STEEL STRAPPIES (AS REQD) BAND INTO FIVE BOMB UNITS, W/ 1 BOMB COMMON TO TWO UNITS.
- ⑬ - 4" x 4" x 8" (AS REQD)

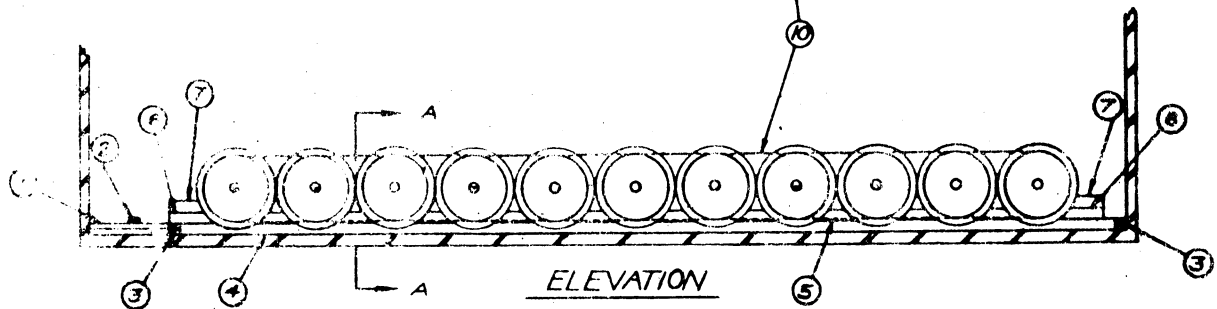
BOMBS: G.P. 1000 LB. S.A.P. 1000 LB.



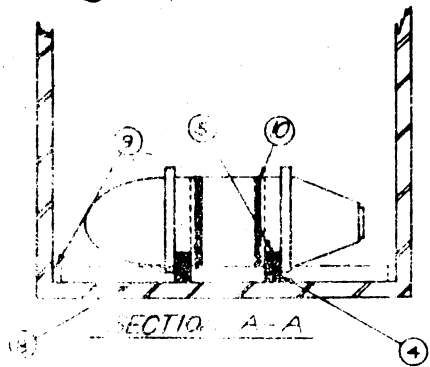
PLAN
FLOOR DUNNAGE



PLAN



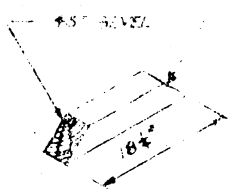
ELEVATION



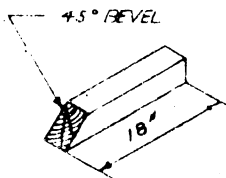
SECTION A-A

KEY NUMBERS & NOTES

- ① 2"x6" CUT TO FIT, DOUBLED (4 REQ'D) NAIL TOGETHER W/1-10d NAIL EVERY 8" TO NAIL TO ③ W/3-12d NAILS EA. JOINT, POSITION AGAINST STRONG POINTS IN NOSE OF TRAILER.
- ② 2"x4" CUT TO FIT (1 REQ'D) NAIL TO EA. ① W/3-12d NAILS.
- ③ 4"x4"x TRAILER WIDTH (2 REQ'D) POSITION AS SHOWN.
- ④ 4"x4" CUT TO FIT (2 REQ'D) NAIL TO FLOOR W/1-40d NAIL EVERY 12" WHEN LOADING METAL FLOORED TRAILERS, OMIT NAILING TO FLOOR AND ADD ⑥ & ⑦.
- ⑤ 4"x4"x18" (20 REQ'D) BEVEL 45° EA. END, NAIL TO ④ W/3-40d NAILS.
- ⑥ 4"x4"x18" MIN. (4 REQ'D) BEVEL 45° ON ONE END AND NAIL TO ④ W/4-60d NAILS.
- ⑦ 4"x4"x15" (4 REQ'D) NAIL TO PC 6 WITH 4-60d NAILS.
- ⑧ 4"x4" CUT TO FIT (2 REQ'D) PER JOINT IN ④, TO NAIL TO ④ W/3-12d NAIL EA. JOINT. USED ONLY ON METAL FLOORED TRAILERS.
- ⑨ 2"x4"x36" MIN. (AS REQ'D) NAIL TO EA. ③ W/3-12d NAILS. USED ONLY ON METAL FLOORED TRAILERS.
- ⑩ STEEL STRAPPING, 1/2" X 0.35" X REQ'D LENGTH (10 REQ'D). STRAP 3 BOMB UNITS WITH ONE BOMB COMMON TO TWO UNITS.



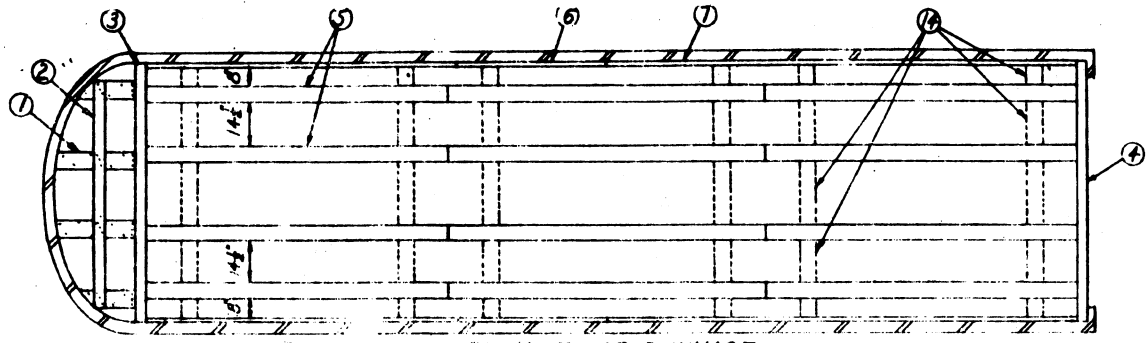
⑤ - END TAIL OF 4'x4' BEVELED BLOCK



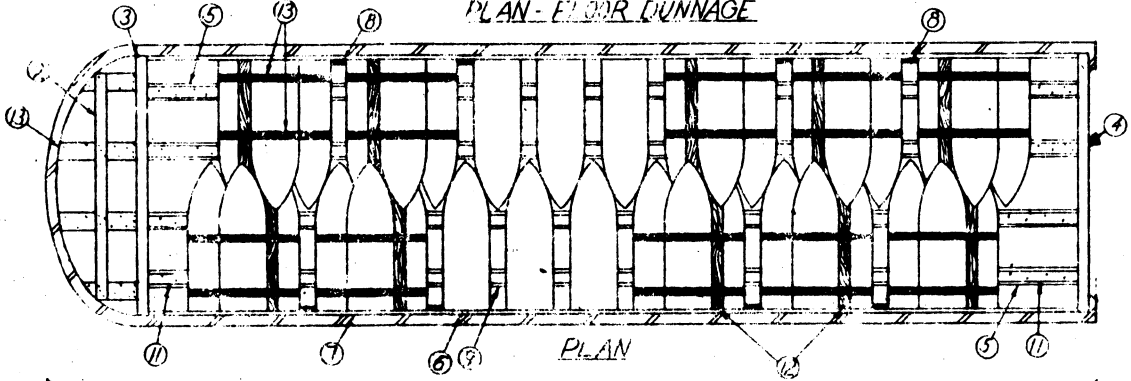
⑥ - DETAIL OF 4'x4' BEVELED BLOCK

LOAD AS SHOWN 1" ON FLOOR TLR
BOMBS APPROX LOAD WT. (INCL DUNNAGE)
24,115 LBS
MAX WT PER BOMB = 2149 LBS

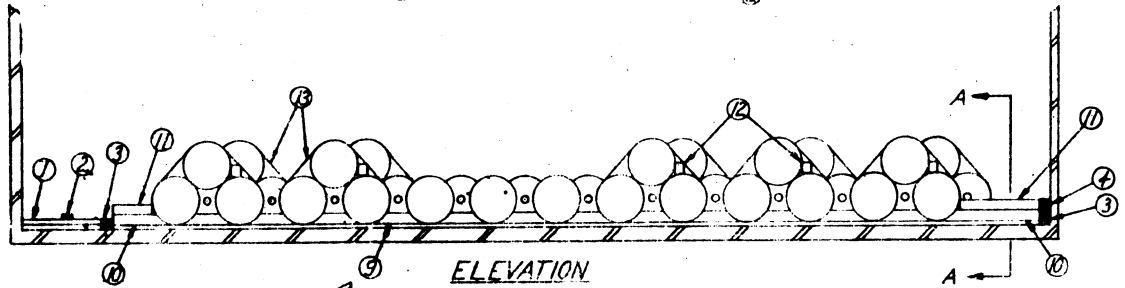
BOMB G.P., 2000 LB.



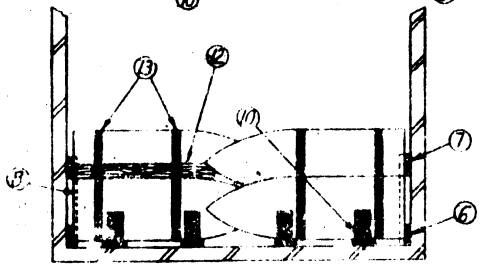
PLAN - FLOOR DUNNAGE



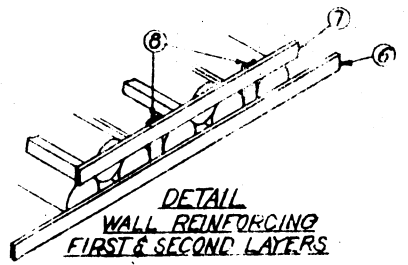
PLAN



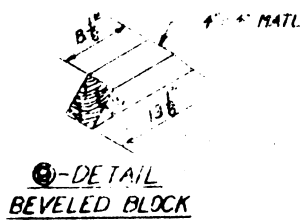
ELEVATION



SECTION - A-A



DETAIL WALL REINFORCING FIRST & SECOND LAYERS



DETAIL BEVELED BLOCK

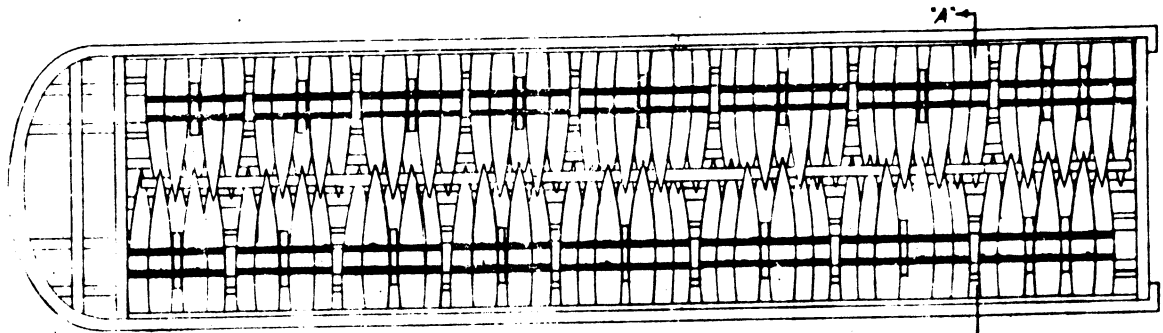
KEY NUMBERS & NOTES

- ① - 2" x 6" CUT TO FIT, (4 REQD) NAIL TOGETHER W/10d NAIL EVERY 6". TOP NAIL TO PC ③, W/3-10d NAILS EA. JT. POSITION AGAINST STRONG POINTS IN NOSE OF TLR
- ② - 2" x 6" CUT TO FIT, (1 REQD) NAIL TO EA. PCS ① W/3-10d NAILS EA. JT.
- ③ - 4" x 4" TLR WIDTH, (2 REQD) POSITION AS SHOWN.
- ④ - 4" x 6" TLR WIDTH, (1 REQD) POSITION ABOVE PC ⑤ AS SHOWN (REAR)
- ⑤ - 2" x 6" CUT TO FIT, (4 REQD) NAIL TO "FLOOR W/10d NAIL EVERY 12" WHEN LOADING METAL FLOORED TRAILERS, ADD PC ⑬ IN LIEU OF NAILING TO FLOOR
- ⑥ - 2" x 6" CUT TO FIT, (2 REQD) POSITION AS SHOWN. TOP NAIL TO ③ W/2d NAILS EA. END
- ⑦ - 2" x 6" CUT TO FIT, (4 REQD) POSITION AS SHOWN.
- ⑧ - 1" x 6" CUT TO FIT, (6 REQD) NAIL TO PCS ⑥ & ⑦ W/3-10d NAILS EA. END
- ⑨ - 4" x 4" x 13 1/2", (8 REQD) NAIL TO PC ⑤ W/1-12d NAIL ON BEVEL, & TWO 40d NAILS ON TOP. BEVEL 55° EA. END
- ⑩ - 4" x 4" x 18" MIN. (3 REQD) BEVEL 55° ON ONE END. NAIL TO PC ⑤ W/4-40d NAILS
- ⑪ - 4" x 4", CUT TO FIT, (8 REQD) NAIL TO PC ⑩ W/4-40d NAILS
- ⑫ - 4" x 4", CUT TO FIT SNUGLY BETWEEN WALL REINFORCING AT SECOND LAYER TO GIVE (4) ROMB LATERALLY OPPOSITE IN SECOND LAYER. (10 REQD) THIS PIECE IS TO BE PLACED ON APPROPRIATE BOMB OF THE S-BOMB Banded UNIT W/BANDS HOLDING IT IN POSITION. BEVEL END TO PREVENT CONTACT W/NOSE PLUG.
- ⑬ - 1/2" x 2 1/2" x 2 1/2" REQD LENGTH STEEL STRAPPING (2 REQD) BAND AS SHOWN.
- ⑭ - FOR METAL FLOOR TRAILERS ONLY EA. PC ⑤, (SHOWN IN DOTTED LINES) 2" x 6" MATL, CUT TO FIT BETWEEN PCS ② OR BETWEEN PCS ③ & ④ (5 PCS. REQD ACROSS WIDTH OF TLR) SPACED LONGITUDINALLY AS REQD. TO MAINT. EA. END TO THE PIECE IT CONTACTS, (EITHER ⑤ OR ⑥, AS SHOWN)

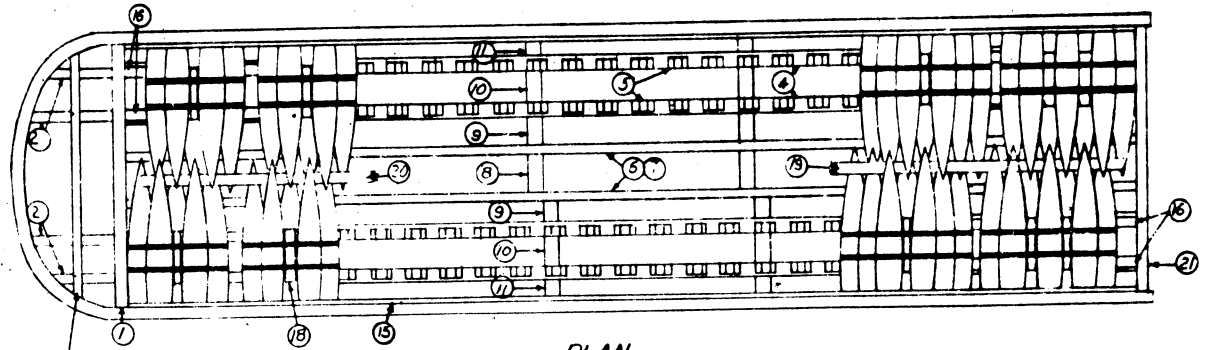
LOAD AS SHOWN (WOODEN FLOOR TRAILER)

BOMBS	APPROX. LOAD WT. (INCL. DUNNAGE)
36	27,518
WT FER BOMB - 737	

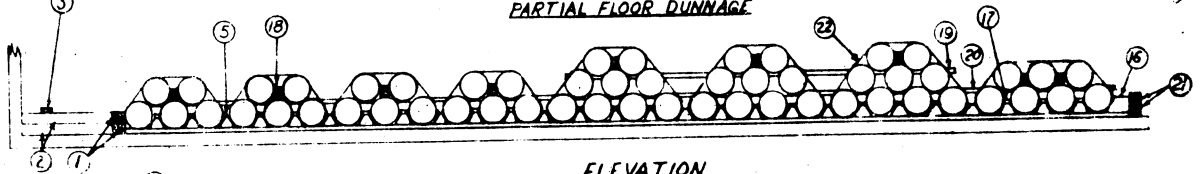
BOMB. DEMOLITION, 750 LB.



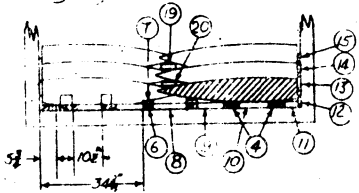
PLAN



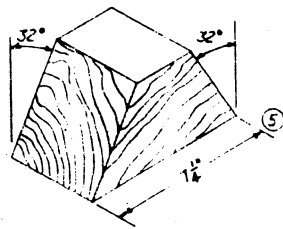
PLAN PARTIAL FLOOR DUNNAGE



ELEVATION



SECTION A-A



DETAIL BEVELED BLOCK

KEY NUMBERS

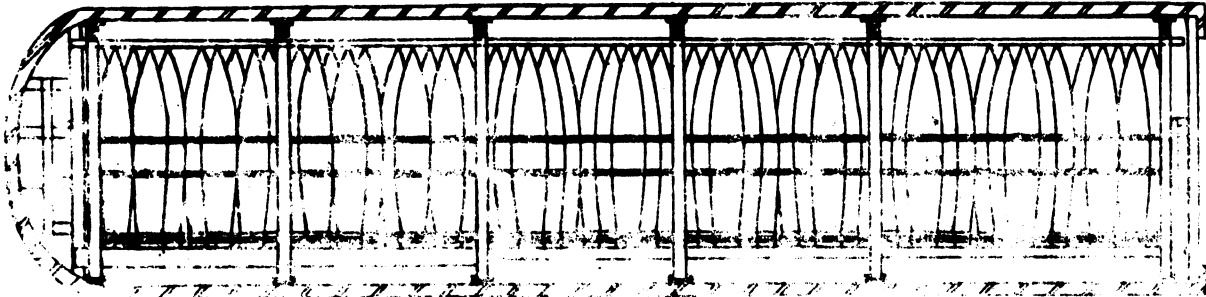
- ① 4"x4"x90" DOUBLED NAIL LOWER TO FLOOR W/1-60# NAIL EVERY FT. NAIL TOGETHER W/1-60# NAIL EVERY 2 FT. (2 REQ'D)
- ② 4"x4" CUT TO FIT, DOUBLED, NAIL TOGETHER W/2 60# NAILS. TOE NAIL TO 1 W/1-16# NAILS. TOE NAIL TO FLOOR W/2 16# NAILS EACH SIDE (2 REQ'D)
- ③ 2"x4" CUT TO FIT. NAIL TO ② W/3-10# NAILS EACH JOINT. (1 REQ'D)
- ④ 2"x6"x28'-6 3/8" NAIL TO FLOOR W/1-12# NAIL EVERY 2'-0" (4 REQ'D)
- ⑤ 4"x4"x 7 1/2" BEVELED BLOCK. (SEE DETAIL) DRILL 1/2" HOLE FOR NAIL. NAIL TO ④ W/1-10# NAIL. ALSO USE 1-12# NAIL-EACH BEVEL. (10# REQ'D)
- ⑥ 2"x4"x28'-5" (2 REQ'D)
- ⑦ 1"x4"x28'-5" NAIL THRU ⑥ TO FLOOR W/1-16# NAIL EVERY 4'-0". (2 REQ'D)
- ⑧ 2"x6"x12 3/8" TOENAIL TO ⑥ W/2-8# NAILS EACH END. (6 REQ'D)
- ⑨ 2"x6"x9 1/2" TOENAIL TO ④ & ⑥ W/2-8# NAILS EACH END. (12 REQ'D)
- ⑩ 2"x6"x10 1/2" TOENAIL TO ④ W/2-8# NAILS EACH END. (12 REQ'D)
- ⑪ 2"x6"x5" TOENAIL TO ④ & ⑥ W/2-8# NAILS EACH END. (12 REQ'D)
- ⑫ 1"x6"x8" TOENAIL TO FLOOR W/2-8# NAILS EACH JOINT. (12 REQ'D)
- ⑬ 1"x6"x128'-5" (APPROX) TOENAIL TO ② W/2 8# NAILS EACH JOINT. (2 REQ'D)
- ⑭ 1"x4"x8" TOENAIL TO ③ W/2-8# NAILS EACH JOINT. (12 REQ'D)
- ⑮ 1"x6"x28'-5" (APPROX) TOENAIL TO ③ W/2-8# NAILS EACH JOINT. (2 REQ'D)
- ⑯ 4"x6"x6 3/8" (APPROX) TOENAIL TO ④ W/1-16# NAIL EACH SIDE. ALSO TOENAIL TO ① (FRONT END OF TRAILER) & ⑰ (REAR END OF TRAILER) W/1-20# NAIL EACH SIDE. (4 REQ'D)
- ⑰ 2"x4"x118" (RIP TO 5 1/2") NAIL TO ⑤ W/1-10# NAIL EACH JOINT. (40 REQ'D)
- ⑱ 2"x4"x3'-6" (3 REQ'D)
- ⑲ 2"x4"x2'-8" STAFF (1 REQ'D)
- ⑳ 1 1/2" X .035 X APPROX. 11'-0" STEEL STRAPPING
- ㉑ 1 1/2" X .035 X APPROX. 10'-6" STEEL STRAPPING
- ㉒ 1 1/2" X .035 X APPROX. 8'-0" STEEL STRAPPING

NOTE

1. LOAD ARRANGEMENT & BLOCKING ARE BASED ON TRAILERS 10'-0" WIDE & BULKHEAD SETTING OF 28'-10" LONG.
2. IF TRAILERS NOT HAVING REAR CORNER POSTS TO BRACE AGAINST, THE BLOCKING WILL EXTEND TO THE DOORWAY, SO THAT THE DOORS WHEN CLOSED WILL PREVENT POSSIBLE SHIFTING OF THE LOAD.
3. PLAN AS SHOWN IS FOR TRAILER WITH WOOD OR WOOD & METAL FLOORS. BLOCKING WILL BE TOENAILED TOGETHER WHENEVER POSSIBLE IN TRAILERS WITH METAL FLOORS.
4. KEY NUMBERS ⑧ THRU ⑱ ARE NOT TO BE USED ON TRAILERS WITH WOOD FLOORS.

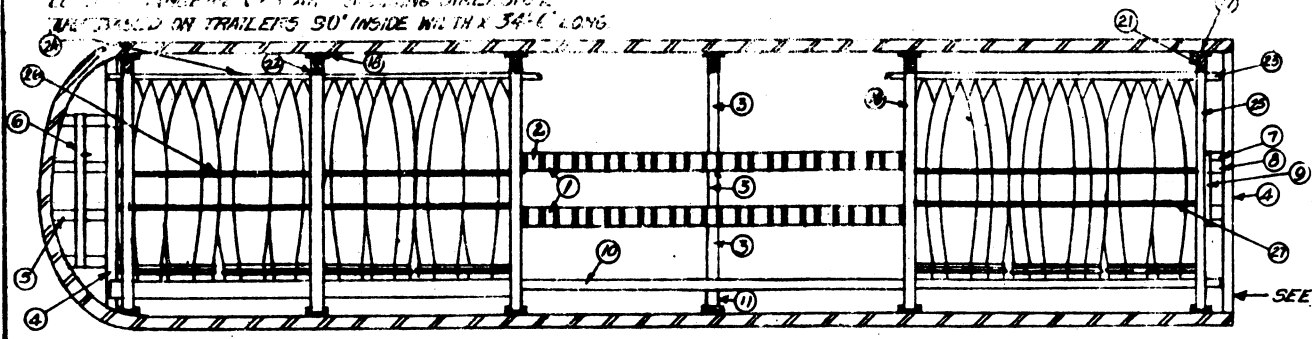
LOAD AS SHOWN	
BOMBS	APPROX TOTAL WT (INCL DUNNAGE)
108	30,280 LB

BOMB 250 LB. MAX



PLAN

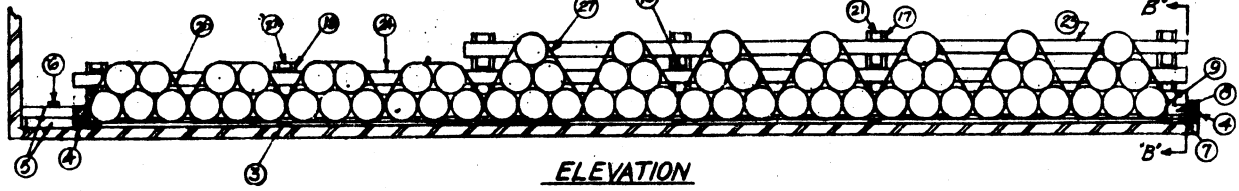
LOAD DIMENSIONS AND BLOCKING DIMENSIONS
 BASED ON TRAILER'S 50' INSIDE WIDTH X 34'-0" LONG



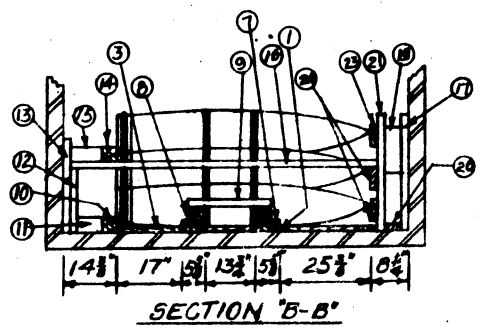
PLAN
 (PARTIAL FLOOR DUNNAGE)

NOTE 'A':
 IN TRAILERS NOT HAVING REAR CORNER POSTS TO BRACE AGAINST, THE BLOCKING WILL EXTEND TO THE DOORWAY, SO THAT DOORS WHEN CLOSED WILL PREVENT POSSIBLE SHIFTING OF LOAD.

NOTE:
 PLAN AS SHOWN IS FOR TRAILERS HAVING WOOD OR WOOD & METAL FLOORS, BLOCKING WILL BE TOENAILLED TOGETHER WHEREVER POSSIBLE IN TRAILERS WITH METAL FLOORS.



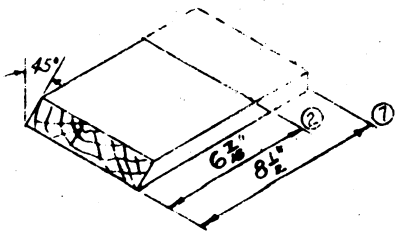
ELEVATION



SECTION 'B-B'

KEY NUMBERS & NOTES

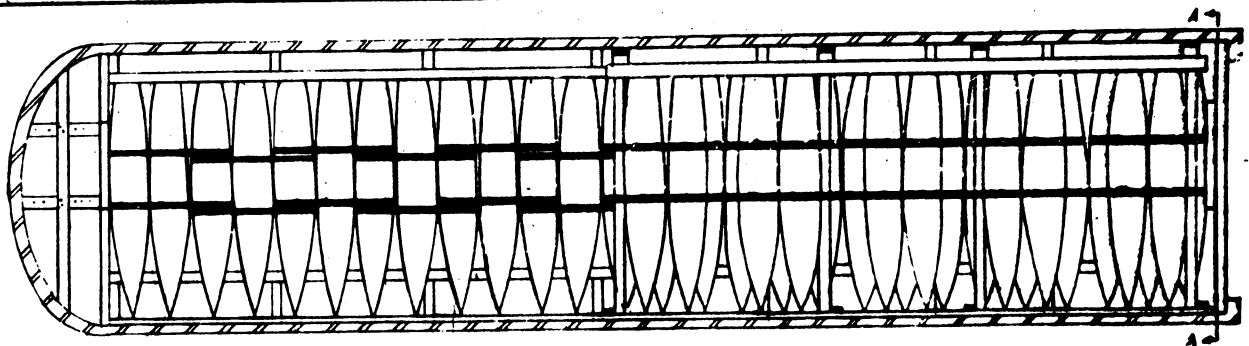
- ① 2"x6"x31'-6" NAIL TO TRAILER FLOOR W/1-12d NAIL 12" (2 REQ'D)
- ② 2"x6"x6 7/8" SEE BEVELED BLOCK DETAIL NAIL TO ① W/3-12d NAILS (70 REQ'D)
- ③ 2"x4" CUT TO FIT. NAIL TO TRAILER FLOOR W/1-12d NAIL 6" (18 REQ'D)
- ④ 4"x4"x30" (DBL) (4 REQ'D) NAIL LWR PC TO FL W/1-40d NAIL EVERY 12" UP TO LWR-SAME
- ⑤ 4"x4" CUT TO FIT. (8 REQ'D) NAIL LWR PC TO FL. W/1-40d NAIL EVERY 12" UP PC TO LWR-SAME
- ⑥ 2"x4"x60" (APPROX.) NAIL TO ③ W/2-16d NAILS EACH JOINT. (1 REQ'D)
- ⑦ 2"x6"x8 1/2" SEE BEVELED BLOCK DETAIL NAIL TO ① W/3-12d NAILS (2 REQ'D)
- ⑧ 4"x4"x8" TOENAIL TO ⑦ W/4-16d NAILS. (2 REQ'D)
- ⑨ 2"x4"x26" NAIL TO ⑧ W/4-16d NAILS (1 REQ'D)
- ⑩ 4"x4"x31'-4" NAIL TO TRAILER FLOOR W/1-40d NAIL EVERY 12" (1 REQ'D)
- ⑪ 4"x6"x6 3/8" TOENAIL TO ⑩ & ⑫ W/2-12d NAILS EACH END (6 REQ'D)
- ⑫ 2"x6"x17 1/2" NAIL TO ⑩ W/3-12d NAILS. (6 REQ'D)
- ⑬ 2"x6"x24" (6 REQ'D)
- ⑭ 4"x4"x20'-6" NAIL TO ⑩ W/1-40d NAIL EACH JOINT (1 REQ'D)
- ⑮ 4"x4"x8 3/8" (APPROX.) TOENAIL TO ⑬ & ⑭ W/2-16d NAILS EACH END (4 REQ'D)
- ⑯ 2"x6"x6'-7" NAIL TO ⑫ & ⑬ W/2-16d NAIL EACH JOINT (6 REQ'D)
- ⑰ 2"x6"x30" NAIL TO ⑮ W/3-16d NAILS (4 REQ'D)
- ⑱ 2"x6"x22" NAIL TO ⑮ W/3-16d NAILS (2 REQ'D)
- ⑲ 4"x4"x12" (6 REQ'D)
- ⑳ 2"x4" CUT TO FIT. NAIL TO FLOOR W/2-12d NAILS (6 REQ'D)
- ㉑ 2"x4"x30" NAIL TO ⑲ W/3-16d NAILS (4 REQ'D)
- ㉒ 2"x4"x22" NAIL TO ⑲ W/3-16d NAILS (2 REQ'D)
- ㉓ 2"x6"x21'-0" NAIL TO ㉑ W/2-16d NAILS EACH JOINT (1 REQ'D)
- ㉔ 2"x6"x32'-0" NAIL TO ㉑ & ㉒ W/2-16d NAILS EACH JOINT (2 REQ'D)
- ㉕ 1 1/2" x .035" x 8'-9" STEEL STRAPPING (8 REQ'D)
- ㉖ 1 1/2" x .035" x 10'-0" STEEL STRAPPING (14 REQ'D)



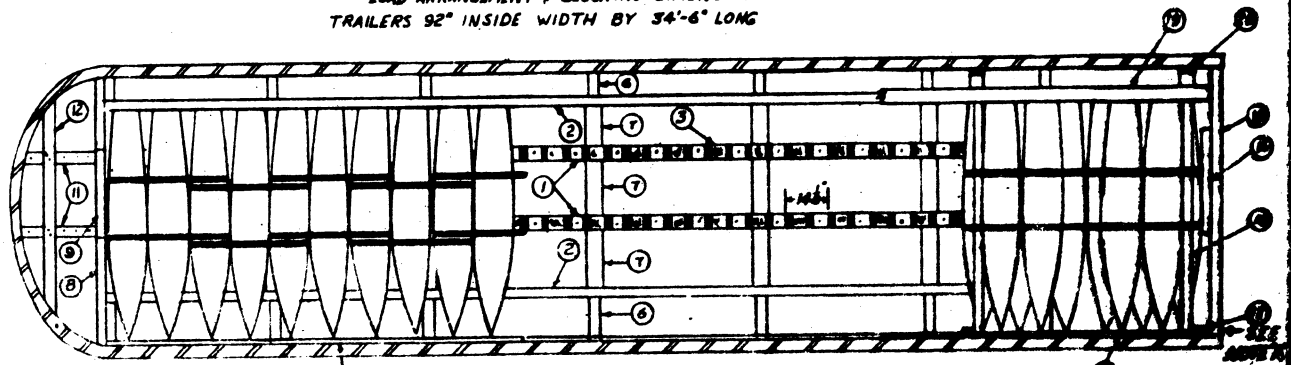
DETAIL-BEVELED BLOCK

LOADS SHOWN
 BOMBS APPROX. TOTAL WEIGHT (INCL. DUNNAGE)
 62 32,796 LBS

BOMB, 500 LB., MK 82



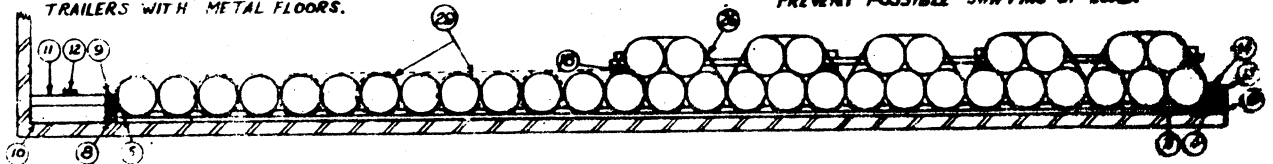
NOTE **PLAN**
LOAD ARRANGEMENT & BLOCKING DIMENSIONS ARE BASED ON TRAILERS 92" INSIDE WIDTH BY 34'-6" LONG



NOTE:
PLAN AS SHOWN IS FOR TRAILERS HAVING WOOD OR WOOD & METAL FLOORS. BLOCKING WILL BE TOE HAILED TOGETHER WHERE EVER POSSIBLE IN TRAILERS WITH METAL FLOORS.

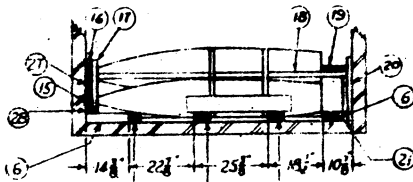
PLAN
PARTIAL FLOOR DUNNAGE

NOTE 'A'
IN TRAILERS NOT HAVING REAR CORNER PIVOTS TO BRACE AGAINST, THE BLOCKING WILL EXTEND TO THE DOORWAY, SO THAT DOORS, WHEN CLOSED, WILL PREVENT POSSIBLE SHIFTING OF LOAD.

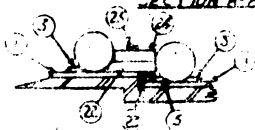


ELEVATION

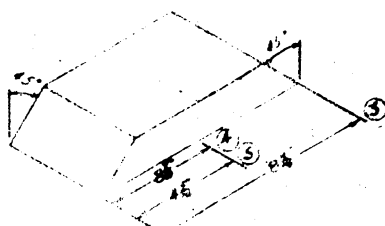
KEY NUMBER & NOTES



SECTION A-A



DETAIL FOR TRAILERS WITH SPLIT LEVEL FLOORS



DETAIL BEVELED BLOCK

- ① 2"x6"x31'-6" (APPROX) NAIL TO TRAILER FLOOR W/1-12d NAIL EVERY 12" (2 REQ'D)
- ② 2"x6"x31'-6" (APPROX) NAIL TO TRAILER FLOOR W/1-4d NAIL EVERY 12" (2 REQ'D)
- ③ 2"x6"x8" SEE BEVELED BLOCK DETAIL. NAIL TO ① W/3-12d NAILS EACH BLOCK (52 REQ'D)
- ④ 2"x6"x8" SEE BEVELED BLOCK DETAIL. NAIL TO ① W/3-12d NAILS EACH BLOCK (2 REQ'D)
- ⑤ 2"x6"x4" SEE BEVELED BLOCK DETAIL. NAIL TO ① W/3-12d NAILS EACH BLOCK (2 REQ'D)
- ⑥ 2"x6" CUT TO FIT. TO NAIL TO ② W/2-16d NAILS. (14 REQ'D)
- ⑦ 2"x6" CUT TO FIT. TO NAIL TO ② W/2-16d NAILS. (21 REQ'D)
- ⑧ 2"x6" TRAILER WIDTH (2 REQ'D)
- ⑨ 4"x6"x30" NAIL TO ⑧ W/6-40d NAILS. (1 REQ'D)
- ⑩ 4"x6" CUT TO FIT. TO NAIL TO ⑥ W/2-16d NAILS. (2 REQ'D)
- ⑪ 4"x6" CUT TO FIT. NAIL TO ⑥ W/5-40d NAILS. (2 REQ'D)
- ⑫ 2"x6" CUT TO FIT. NAIL TO ① W/3-16d NAILS EACH JOINT. (1 REQ'D)
- ⑬ 4"x6" TRAILER WIDTH. NAIL TO ⑧ W/1-40d NAIL EVERY 12". (1 REQ'D)
- ⑭ 4"x6"x5'-0". TOE NAIL TO ⑧ W/16d NAILS. (1 REQ'D)
- ⑮ 2"x6"x31'-6" (APPROX) NAIL TO TRAILER SIDE WALL W/16d NAILS EVERY 18" (4 REQ'D)
- ⑯ 2"x6"x17'-6" (APPROX) NAIL TO TRAILER SIDE WALL W/16d NAILS EVERY 18" (4 REQ'D)
- ⑰ 2"x6"x16" NAIL TO ⑮ W/2-16d NAILS EACH JOINT. (4 REQ'D)
- ⑱ 2"x6"x16" (APPROX) TOE NAIL TO ⑮ W/2-16d NAILS EACH. (4 REQ'D)
- ⑲ 2"x6"x17'-6" (APPROX) NAIL TO ⑮ W/3-16d NAILS EACH JOINT. (1 REQ'D)
- ⑳ 2"x6"x27" NAIL TO TRAILER WALL W/5-6d NAILS. (6 REQ'D)
- ㉑ 2"x6" CUT TO FIT. NAIL TO ㉑ W/3-12d NAILS. (6 REQ'D)
- ㉒ 4"x6"x17" BEVEL ONE END 30°. NAIL TO ㉑ W/2-40d NAILS. (2 REQ'D)
- ㉓ 4"x6"x16" (APPROX) NAIL TO ㉑ W/2-40d NAILS. (2 REQ'D)
- ㉔ 2"x6"x30" NAIL TO ㉑ W/4-16d NAILS. (1 REQ'D)
- ㉕ 1 1/2" x 555" x 10'-6" STEEL STRAPPING (10 REQ'D)
- ㉖ 2"x6"x2" SPACER 7" NAIL TO ㉑ W/2-16d NAILS. (3 REQ'D)
- ㉗ 1 1/2" x 12" 5-ACER NAIL TO ㉑ W/2-12d NAILS (7 REQ'D)
- ㉘ 1 1/2" x 555" x 10'-6" STEEL STRAPPING (10 REQ'D) BOMBS WILL BE 4 - 103 LBS PER LIN. (SEE INSTRUCTIONS FOR MARKING AND BOMB POSITION TO 2 UNIT)

BOMB, 100 LBS., MK 83

BOMBS TOTAL WT. APPROX (INCL DUNNAGE)
37726 LBS.

