

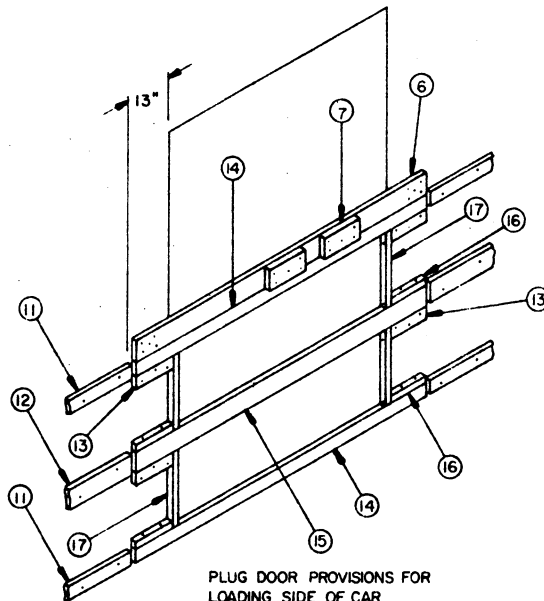
**PLUG DOOR PROVISIONS FOR SIDE
OPPOSITE THE LOADING SIDE OF CAR**
THIS VIEW IS FROM INSIDE OF CAR.

KEY NUMBERS

- ① SAME AS KEY NUMBER ① ON PAGE 10. SEE SPECIAL NOTE 4 ON PAGE 3 AT RIGHT.
- ② SAME AS KEY NUMBER ② ON PAGE 10.
- ③ THRU ② NOT SHOWN. NOT APPLICABLE FOR DOORWAY PROTECTION.
- ⑩ DOOR SPANNER PIECE, 1" X 6" BY DOOR OPENING WIDTH PLUS 24" (4 REQD.), POSITION ONE ABOVE THE BOTTOM PIECE MARKED ①, ONE BELOW THE TOP PIECE MARKED ①, AND ONE EACH ABOVE AND BELOW PIECE MARKED ②. NAIL TO THE CAR SIDEWALL W/5-6d NAILS AT EACH END. SEE SPECIAL NOTE 4 AT THE LEFT.

SPECIAL NOTES:

1. THE PROCEDURES ON THIS PAGE AUGMENT THE LOAD SHOWN ON PAGE 10 OF REVISION NUMBER 1 TO THE BASIC DRAWING, AND ARE APPLICABLE FOR DOORWAY PROTECTION ON THE SIDE OPPOSITE THE LOADING SIDE OF THE CAR.
2. THE DOORWAY PROTECTION SHOWN IS APPLICABLE FOR SHIPMENTS OF PROPELLANTS PACKED IN THE M2 AND/OR THE MKVII STEEL BOX.
3. A DOUBLE DOOR OPENING, WITH A COMBINATION OF PLUG TYPE AUXILIARY AND A CONVENTIONAL SLIDING TYPE MAIN DOOR WHEN THE SLIDING DOOR IS WIDER THAN 6'-0", IS SHOWN. THE PROCEDURES ARE ALSO APPLICABLE FOR CARS WITH SINGLE SLIDING DOORS WIDER THAN 6'-0".
4. THE DOOR SPANNER PIECES, PIECES MARKED ⑩, ARE ONLY REQUIRED FOR CONVENTIONAL SLIDING DOORS WHICH ARE WIDER THAN 6'-0". PIECES MARKED ⑩ MAY BE OMITTED IF THE MAIN DOOR OPENING IS A PLUG TYPE DOOR OR IS A CONVENTIONAL SLIDING DOOR ONLY 6'-0" WIDE, OR IF BOTH THE MAIN AND AUXILIARY DOORS ARE OF THE PLUG TYPE. PIECES MARKED ⑩ MAY ALSO BE OMITTED WHEN THE SIDE FILL, PIECES MARKED ① AND ②, IS OF ONE 2" THICKNESS MATERIAL OR GREATER.



PLUG DOOR PROVISIONS FOR
LOADING SIDE OF CAR
THIS VIEW IS FROM INSIDE OF CAR.

SPECIAL NOTES:

1. THE PROCEDURES ON THIS PAGE AUGMENT THE LOAD SHOWN ON PAGE 10 OF REVISION NUMBER 1 TO THE BASIC DRAWING, AND ARE APPLICABLE FOR DOORWAY PROTECTION ON THE LOADING SIDE OF THE CAR.
2. THE DOORWAY PROTECTION SHOWN IS APPLICABLE FOR SHIPMENTS OF PROPELLANTS PACKED IN THE M2 AND/OR THE MKVII STEEL BOX.
3. A SINGLE 6'-0" WIDE PLUG DOOR IS SHOWN. THE PROCEDURES ARE ALSO APPLICABLE FOR PLUG DOORS WIDER THAN 6'-0" AND FOR CONVENTIONAL SLIDING DOORS.
4. SIDE FILL PIECES MARKED ⑪ AND ⑫ ARE TO BE USED ON THE LOADING SIDE OF THE CAR IN LIEU OF THE PIECES MARKED ① AND ② WHICH ARE SPECIFIED ON PAGE 10. PIECES MARKED ⑪ AND ⑫ ARE LIMITED TO ONE (1) THICKNESS OF 2" MATERIAL. THEREFORE, IF ADDITIONAL FILL MATERIAL IS REQUIRED TO PROVIDE FOR A TIGHT LOAD ACROSS THE CAR, THE ADDED MATERIAL MUST BE APPLIED TO THE PIECES MARKED ① AND ② ON THE SIDE OF THE CAR OPPOSITE THE LOADING SIDE.
5. PRIOR TO COMPLETING THE LOADING OF THE BOXES UP TO THE DOORWAY (ALLOW AT LEAST 14") ON THE LOADING SIDE OF THE CAR, PIECES MARKED ⑬ MUST BE APPLIED TO THE CAR SIDEWALL AT THE LOCATIONS SPECIFIED. PIECES MARKED ⑭ WILL BE APPLIED TO PIECES MARKED ⑭ AND ⑮, AND THE ASSEMBLED PIECES POSITIONED AFTER THE LOADING IS COMPLETED, EITHER BEFORE OR AFTER INSTALLING THE CENTER GATES AND STRUTS. THE GATE HOLD-DOWN AND THE HOLD-DOWN CLEATS, PIECES MARKED ⑥ AND ⑦, MUST NOT BE INSTALLED UNTIL AFTER THE DOOR SPANNERS, PIECES MARKED ⑬ AND ⑭, HAVE BEEN POSITIONED.

KEY NUMBERS

- ① NOT SHOWN. NOT APPLICABLE FOR DOORWAY PROTECTION ON LOADING SIDE OF CAR. SEE KEY NUMBER ⑪ BELOW.
- ② NOT SHOWN. NOT APPLICABLE FOR DOORWAY PROTECTION ON LOADING SIDE OF CAR. SEE KEY NUMBER ⑫ BELOW.
- ③ NOT SHOWN. NOT APPLICABLE FOR DOORWAY PROTECTION.
- ④ NOT SHOWN. NOT APPLICABLE FOR DOORWAY PROTECTION.
- ⑤ NOT SHOWN. NOT APPLICABLE FOR DOORWAY PROTECTION.
- ⑥ SAME AS KEY NUMBER ⑥ ON PAGE 10. ADJUST LENGTH SO AS TO BE 24" LONGER THAN DOOR OPENING WIDTH. SEE SPECIAL NOTE 5 FOR INSTALLATION GUIDANCE.
- ⑦ SAME AS KEY NUMBER ⑦ ON PAGE 10.
- ⑧ NOT SHOWN. NOT APPLICABLE FOR DOORWAY PROTECTION.
- ⑨ NOT SHOWN. NOT APPLICABLE FOR DOORWAY PROTECTION.
- ⑩ NOT SHOWN. ONLY APPLICABLE FOR DOORWAY PROTECTION ON SIDE OPPOSITE LOADING SIDE OF CAR AS SHOWN ON OPPOSITE PAGE.
- ⑪ SIDE FILL, 2" X 4" BY A LENGTH TO EXTEND FROM CAR END WALL TO A POINT 13" FROM DOOR OPENING (4 REQD). POSITION AT TOP AND BOTTOM OF LOAD. NAIL TO CAR SIDEWALL W/1-10d NAIL EVERY 12". SEE SPECIAL NOTE 4.
- ⑫ SIDE FILL, 2" X 6" BY A LENGTH TO EXTEND FROM CAR END WALL TO A POINT 13" FROM DOOR OPENING (2 REQD). POSITION SO AS TO BE CENTERED ON JOINT BETWEEN LAYERS. NAIL TO CAR SIDEWALL W/1-10d NAIL EVERY 12".
- ⑬ NAILING CLEAT, 2" X 4" X 12" (4 REQD). POSITION WITH THE TOP EDGE FLUSH WITH THE BOTTOM EDGE OF THE UPPER PIECE MARKED ⑪ AND/OR THE BOTTOM EDGE OF PIECE MARKED ⑫ AND WITH ONE END FLUSH WITH A DOOR POST.
- ⑭ DOOR SPANNER, 2" X 4" BY DOOR OPENING WIDTH PLUS 24" (2 REQD).
- ⑮ DOOR SPANNER, 2" X 6" BY DOOR OPENING WIDTH PLUS 24" (1 REQD).
- ⑯ NAILING CLEAT, 2" X 2" X 12" (4 REQD). NAIL TO THE TOP EDGE OF PIECE MARKED ⑬ AND/OR THE TOP EDGE OF LOWER PIECE MARKED ⑭ W/2-10d NAILS.
- ⑰ DOOR SPANNER HOLD-DOWN PIECE, 2" X 2" X 22" (4 REQD). NAIL TO PIECES MARKED ⑬ AND ⑭ W/1-10d NAIL AT EACH END.

