

APPROVED
BUREAU
OF
EXPLOSIVES
A. G. Grassmud
DATE 2/28/58 INSPECTOR



LOADING & BRACING IN BOX CARS OF PROPELLANTS AND COMPLETE ROUNDS IN METAL CONTAINERS, AND BULK POWDER

INDEX

<u>ITEM</u>	<u>PAGE(S) *</u>	<u>ITEM</u>	<u>PAGE(S) *</u>
GENERAL NOTES	2	COMPLETE ROUNDS,- MTL. CNTRS. T41 & M152	15, 16, 17, & 18
CHARGE, PROPELLING- MTL. CNTR. MK1	13 & 14	MTL. CNTR. M154	17 & 18
MTL. CNTR. M9 & M9A1	13 & 14	MTL. CNTR. M159	17, 18, & 19
MTL. CNTR. 280mm. M9E1	13 & 14	MTL. CNTR. M175 & M194	19, & 20
MTL. CNTR. M10	13 & 14	MTL. CNTR. M173	19 & 20
MTL. CNTR. M12	13 & 14	BLACK POWDER- 25 LB. MTL. DRUM	21 & 22
MTL. CNTR. M13 & M13A1	13 & 14	POWDER PROPELLANTS- M17 WDN. BOX	21 & 22
MTL. CNTR. M14	13 & 14	BOX, STEEL, M2 & MKVII	21 & 22
MTL. CNTR. M15	13 & 14	MTL. LND. WDN. BOX, M24	21 & 22
MTL. CNTR. M16	13 & 14	WDN. BOX	21 & 22
MTL. CNTR. M17	15 & 16	ALT. WDN. BOX	21 & 22
MTL. CNTR. M18	15 & 16	INDEX TO FEDERAL STOCK NUMBER & DEPARTMENT OF DEFENSE IDENTIFICATION CODE	23 & 24
MTL. CNTR. M19	15 & 16		
MTL. CNTR. M20	15 & 16		
MTL. DRUM- 75mm & 105 HOW.	21 & 22		
MTL. CNTR. (T64)M349 & M350	21 & 22		

* PAGE REFERENCED IS FOR TABULAR DATA. COLUMN 5 OF
TABULAR DATA REFERS TO PROPER PLANS, ELEVATIONS,
ETC., FOR SHIPPING OF ITEM.

CAUTION
GENERAL NOTES, PAGE 2, WILL BE THOROUGHLY READ
PRIOR TO SHIPPING OPERATIONS.

**LOADING & BRACING IN BOX CARS OF
PROPELLANTS AND COMPLETE ROUNDS
IN METAL CONTAINERS AND BULK
POWDER.**

DESIGNED KAS/R.J.H.	TRACER	ENGINEER CRJ/ABC	SUBMITTED <i>[Signature]</i>
CHECKED CRJ/JDB	CHECKER R.K.	ENGINEER	COL. 280 CORPS U.S.A.
REVISIONS			
1	11-26-57	CRJ/JDB	<i>[Signature]</i> James D. Burke COL. 280 CORPS U.S.A.
APPROVED BY ORDER OF THE CHIEF OF ORDNANCE			
<i>[Signature]</i> COL. 280 CORPS U.S.A.			
ORDNANCE CORPS U.S.A.			
16 MAY 1956			
CLASS	DIVISION	DRAWING	FILE
19	48	4017	5M1002

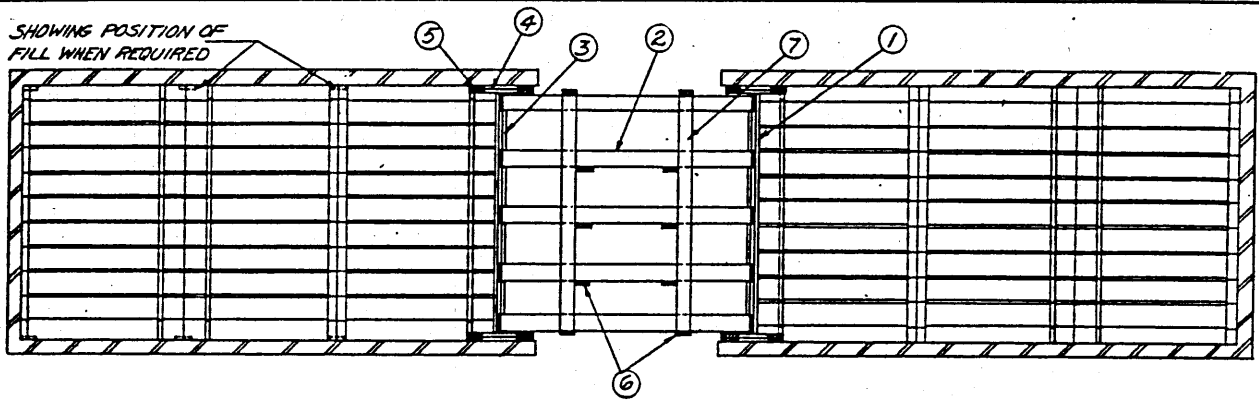
GENERAL NOTES

1. LOADS OF CYLINDRICAL METAL CONTAINERS, POSITIONED HORIZONTALLY WITH LONG AXIS OF CONTAINER PARALLEL TO SIDE WALL OF CAR, ARE DESIGNED SO THAT NOT MORE THAN ONE-THIRD OF THE CONTAINER LENGTH EXTENDS INTO DOORWAY AREA. IN THE EVENT ADDITIONAL CONTAINERS ARE REQUIRED TO MEET LOAD LIMIT OF THE CAR, STACK HEIGHT MAY BE INCREASED. HOWEVER, THE NUMBER OF STACKS PER CAR LENGTH WILL NOT BE INCREASED ABOVE THAT SHOWN HEREIN.
2. WHEN LOADING BLACK POWDER INTO CARS, ALL EXPOSED METAL SUCH AS DRAFT BOLTS, KING BOLTS, AND METAL FLOOR PLATES MUST BE COMPLETELY COVERED WITH WOOD, PLYWOOD, FIBER OR COMPOSITION SHEETS OF ADEQUATE THICKNESS AND STRENGTH TO PREVENT CONTACT OF THE STEEL WITH THE PACKAGES OF EXPLOSIVE, (SEE ICC TARIFF NO.10, SECTION 74.525 (9)).
3. WHEN LOADING M13 AND M13A1 CONTAINERS INTO CARS, IT MAY BE NECESSARY TO SEGREGATE THESE TYPES AND LOAD THE M13 IN ONE END OF THE CAR AND M13A1 IN THE OTHER END. THIS IS DUE TO VARIATION IN THE CONTAINER SIZES.
4. IN ALL INSTANCES SHOWN HEREIN, THE VERTICAL SPACING OF STRUTS SHOULD BE EQUAL AND NOT EXCEED 20" CENTER TO CENTER.
5. LOADS SHOWN FOR BOXED ITEMS ARE FULL LAYERS. WHEN HEIGHT WITHIN CAR PERMITS, ADDITIONAL PARTIAL LAYERS MAY BE LOADED, IN ORDER TO MEET LOAD LIMIT OF CAR.

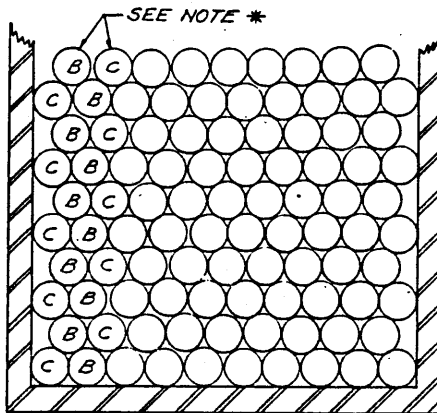
MATERIAL SPECIFICATIONS

LUMBER: SEE PAR. 5400, ORDM 3-4, VOL.2, DATED 15, APR 1956
NAILS: COMMON, CEMENT COATED, FED. SPEC. FF-N-105.
ALT: ANNULAR-RING TYPE NAILS OF SAME SIZE.
STEEL STRAPPING: TYPE 1, CLASS A OR C, FED. SPEC. QQ-S-781.

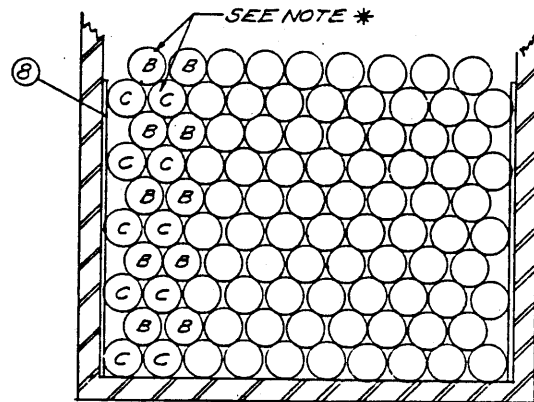
CHARGE, PROPELLING METAL CONTAINER



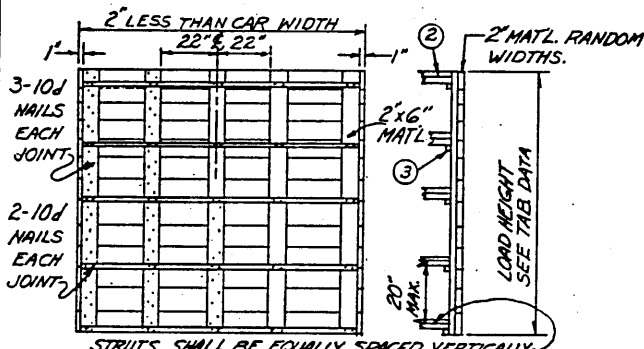
TYPICAL PLAN



TYPICAL CROSS SECTION
(8'-6" WIDTH - 50 TON CAR)



TYPICAL CROSS SECTION
(9'-2" WIDTH - 50 TON CAR)



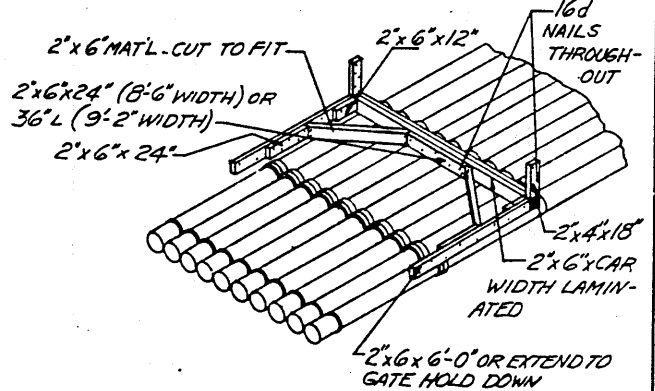
TYPICAL - CENTER GATE (2 REQ'D/CAR)

NOTE:

GATE AS SHOWN, W/PC. 3 OMITTED, MAY BE USED FOR BULKHEADS WHERE CAR ENDS ARE IN BOWED CONDITION. FILL BETWEEN GATE UPRIGHTS AND CAR WALL AS REQ'D.

KEY NUMBERS & NOTES

- ① CENTER GATES (SEE DETAIL) DO NOT NAIL TO CAR.
- ② STRUTS (AS REQ'D) MAX. VERTICAL SPACING 20". LAMINATED 2"x6" OR 4"x4" TO NAIL TO GATE UPRIGHTS W/3-16d EA. END.
- ③ CLEATS (AS REQ'D) 2"x2"x GATE WIDTH. (ALT. 2"x6"x12")
- ④ GATE HOLD DOWN, 2"x6"x24" NAIL LOWER PC. TO CAR WALL W/5-16d NAILS, 2nd PC TO 1" IN LIKE MANNER. IF GATES ARE 12" FROM OR EXTEND INTO DOORWAY 2"x6"x8'-0" MAT'L WILL BE USED ACROSS DOORWAY W/2"x6"x12" CLEATS NAILED TO HOLD DOWN OVER GATES.
- ⑤ CLEATS 2"x6"x24" NAIL LOWER PC. TO CAR WALL W/5-16d NAILS, NAIL UPPER PC TO LOWER IN LIKE MANNER (1/6 REQ'D) NOT REQ'D WHEN 2"x6"x8'-0" HOLD DOWN IS USED.
- ⑥ VERTICAL STRUT BRACING (AS REQ'D) 2"x4" MAT'L x LOAD HEIGHT, NAIL TO STRUTS W/3-12d NAILS EACH JOINT (NOTE ②)
- ⑦ HORIZONTAL STRUT BRACING (AS REQ'D) 2"x4" MAT'L x GATE WIDTH 2 PER STRUT LEVEL REQ'D. NAIL TO STRUTS WITH 3-12d EACH JOINT. (NOTE ②)



TYPICAL K-BRACING OF PARTIAL LAYER

NOTE *

CONTAINERS MAY BE ALTERNATED (CAP & BASE) INDIVIDUALLY OR BY LAYER IN ORDER TO UTILIZE THE MAXIMUM OF THE CAR WIDTH.

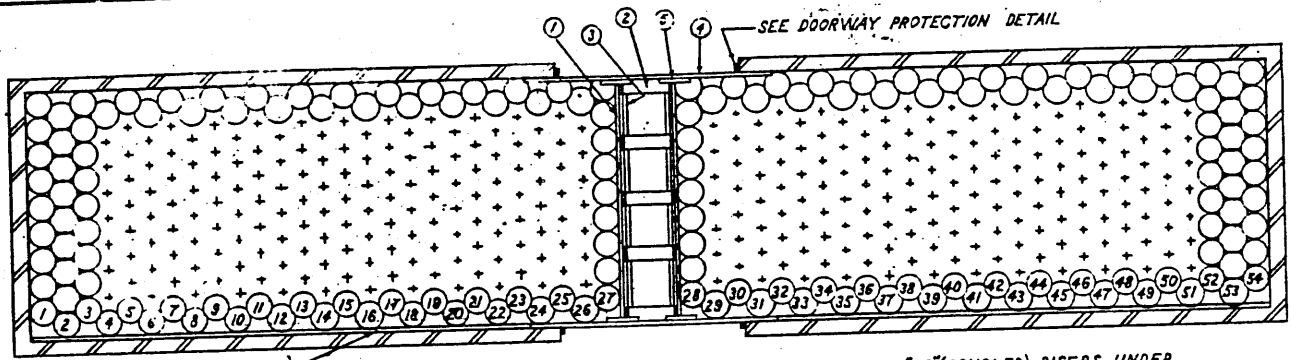
⑤

FILL AS REQUIRED TO MAINTAIN LEVEL LAYERS WHEN STACKING.

NOTE ①

PCS. 6 & 7 REQUIRED ONLY WHEN STRUT LENGTH EXCEEDS 48". FOR FURTHER INFORMATION SEE SKETCH 34, PAGE 72. BUREAU OF EXPLOSIVES PAMPHLET NO. 6A, APPENDIX NO. 2.

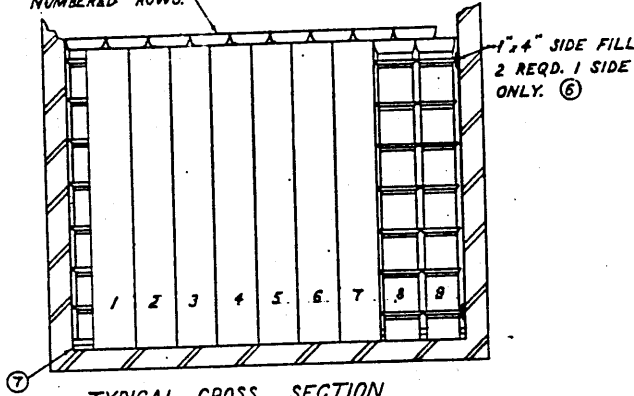
CHARGE PROPELLING, MTL. CNTR.(MSEI)



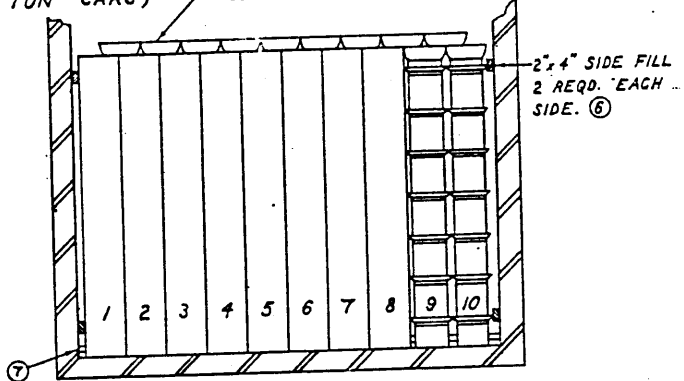
⑥ SIDE FILL (SEE SECTIONS)
2"x6" (DOUBLED) RISERS UNDER ODD
NUMBERED ROWS.

TYPICAL PLAN
(8'-6" WIDTH - 40 & 50 TON CARS)

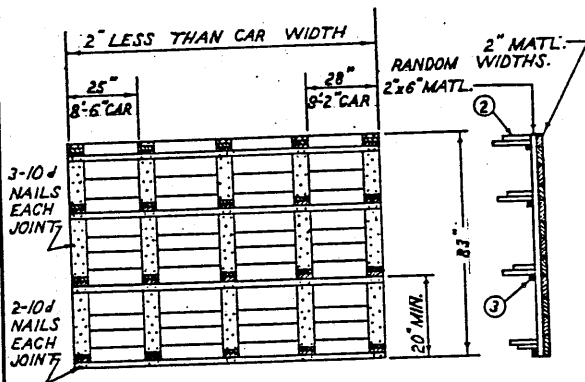
2"x6" (DOUBLED) RISERS UNDER
ODD NUMBERED ROWS.



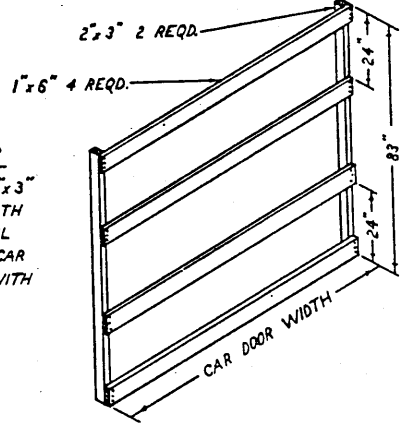
TYPICAL CROSS SECTION
(8'-6" WIDTH - 40 & 50 TON CAR)



TYPICAL CROSS SECTION
(9'-2" WIDTH 40 & 50 TON CAR)



DETAIL-CENTER GATE
2 REQD.



DOORWAY PROTECTION
2 REQD./CAR

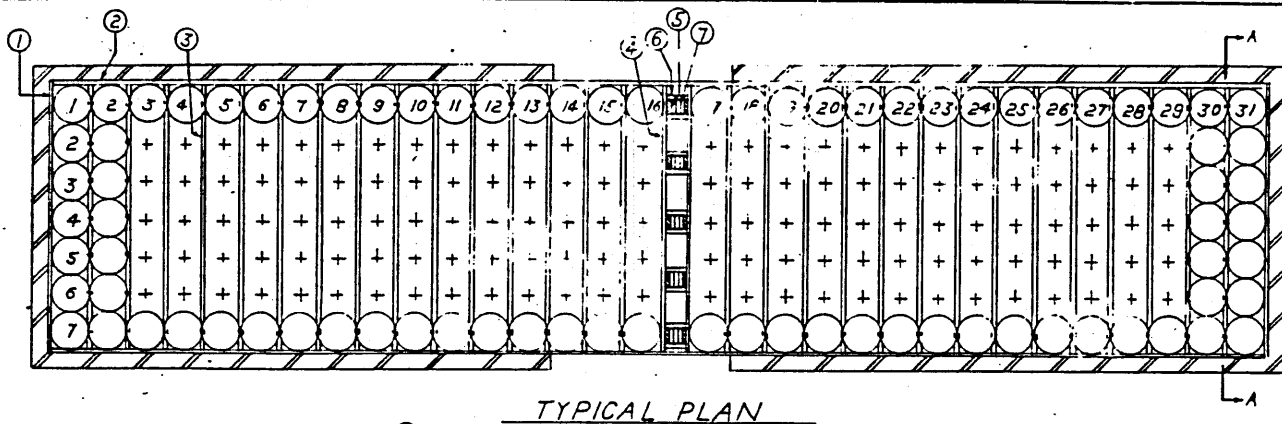
NAILING
NAIL 1"x6" TO 2"x3"
EACH END WITH
3-6d NAILS. NAIL
EACH 2"x3" TO CAR
DOOR POSTS, WITH
6-12d NAILS.

NOTE:
THIS GATE MAY BE USED FOR END BULKHEAD
WHERE CAR ENDS ARE IN A BOWED CONDITION.
OMIT CLEATS AND FILL BETWEEN GATE
UPRIGHTS AND WALL AS REQUIRED.

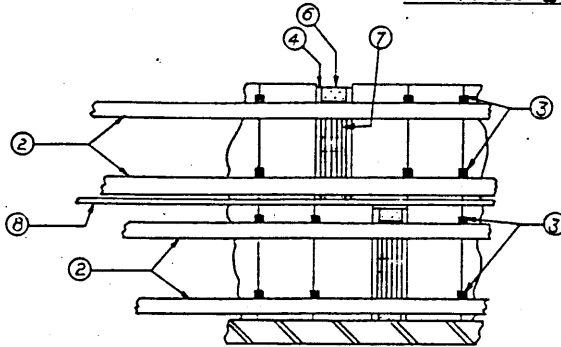
KEY NUMBERS & NOTES

- ① CENTER GATES NOT TO BE NAILED TO CAR.
2 REQD. (SEE DETAIL)
- ② STRUTS- DOUBLED 2"x6" APPROXIMATELY 17"
20 REQD. NAIL TOGETHER WITH 1-12d NAIL EA. 8"
TO NAIL TO GATE UPRIGHTS WITH 3-16d NAILS
EACH END.
- ③ CLEATS, 2"x2"x LENGTH OF GATE. NAIL TO GATE
UPRIGHTS WITH 2-10d NAILS EACH JOINT (8 REQD.)
- ④ GATE HOLD DOWN, 2"x6"x 8'-0"- 2 REQD. NAIL TO
CAR WALL WITH 5-16d NAILS EACH END.
- ⑤ HOLD DOWN CLEATS, 2"x6"x 12"- 4 REQD.
NAIL TO HOLD DOWN OVER GATES WITH
5-16d NAILS EACH CLEAT.
- ⑥ SIDE FILL, 8"x6" CAR 1"x4"x 17'-3" (4 REQD.); 9"x2"
CAR 2"x4"x 17'-3" (8 REQD.). NAIL 1"x4" FILL TO
CAR WALLS WITH 1-6d EVERY 12". NAIL 2"x4"
FILL TO CAR WALLS WITH 1-10d EVERY 12".
- ⑦ 2"x6" (DOUBLED) RISERS, CAR WIDTH. DO NOT
NAIL TO CAR FLOOR.

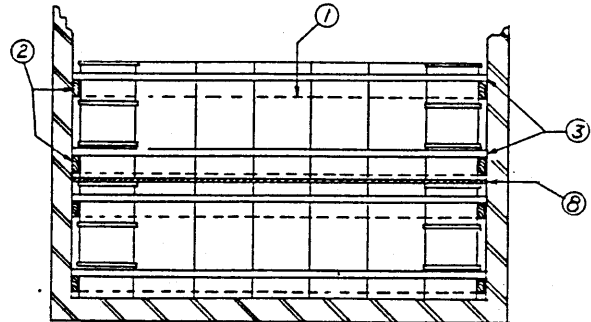
CHARGE, PROPELLING, METAL DRUM



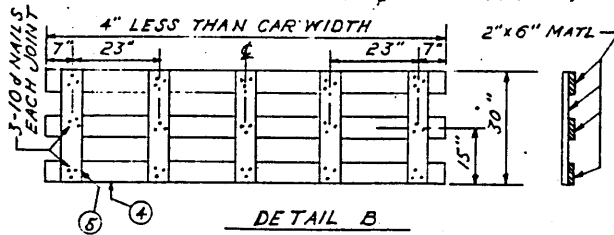
TYPICAL PLAN



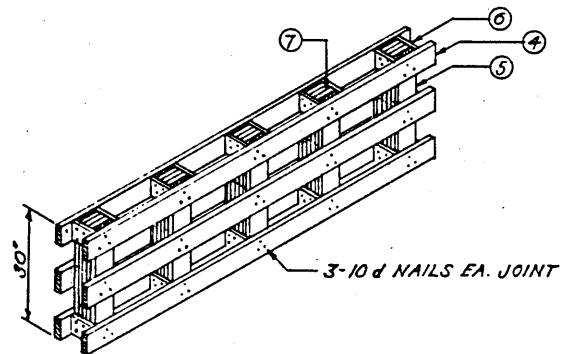
DETAIL A
(SHOWING POSITIONING OF
GATE & CENTER FILL)



SECTION A-A
(SHOWING LOCATION OF
SIDE FILL & 2"x2" CROSS PIECES)



DETAIL B
CENTER GATE
4 REQD PER CAR
(SEE NOTE *)



DETAIL C
(SHOWING GATES & CENTER FILL)

NOTE:

SIDE FILL (2) PROVIDES DOORWAY PROTECTION.
NO OTHER DOORWAY PROTECTION NEEDED.

NOTE:

THIS DRAWING IS BASED ON BOX CARS 40'-6"
LONG, 9'-0" & 9'-2" WIDE, INSIDE DIMENSIONS
THE PRINCIPLES SHOWN HEREON WILL BE
APPLICABLE TO CARS OF OTHER DIMENSIONS.

NOTE

IF INTERIOR CAR HEIGHT PERMITS, DRUMS MAY BE
LOADED IN CAR THREE HIGH. THIS WILL REQUIRE 2
ADDITIONAL GATES, 1" MATL. INTERMEDIATE FLOOR
TO BE POSITIONED BETWEEN EACH LAYER OF DRUMS.

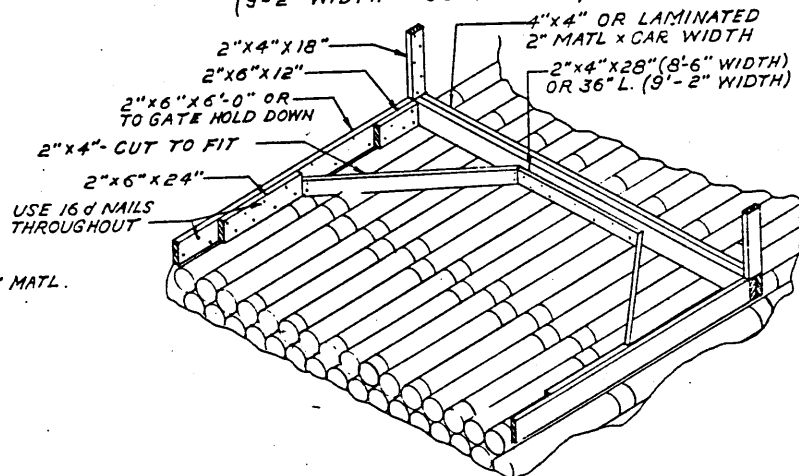
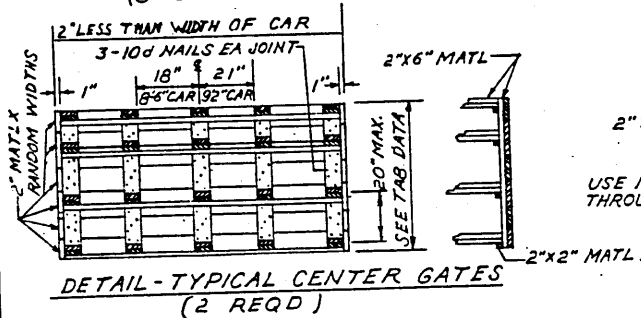
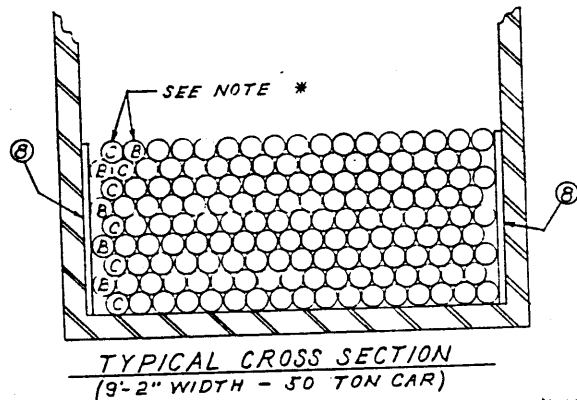
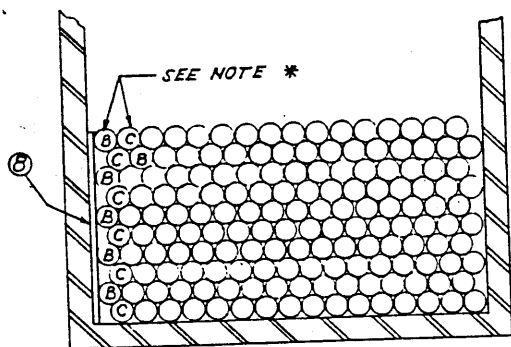
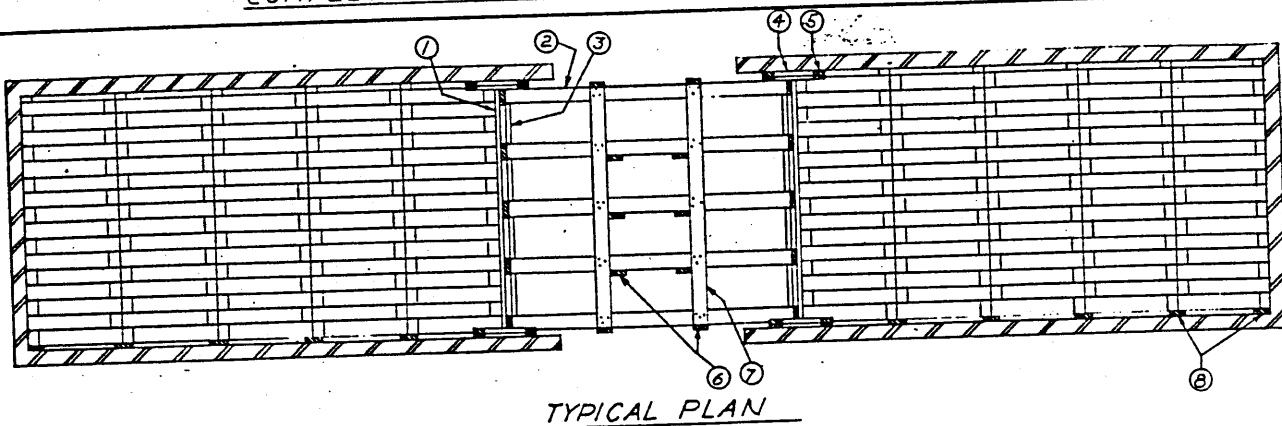
KEY NUMBERS & NOTES

- | | |
|---|---|
| <p>① - END FILL - 1"x4" X WIDTH OF CAR - 8 REQD.
NAIL TO CAR WALL WITH 1-6 d NAIL
EVERY 12"</p> <p>② - SIDE FILL - 1"x4" ROUGH LUMBER FOR 9'-0"
CAR WIDTH - 2"x4" ROUGH LUMBER FOR
9'-2" CAR WIDTH, X LENGTH OF CAR - 8 REQD.
NAIL TO CAR WALL WITH 1-10 d NAIL EVERY 12"</p> <p>③ - CROSS FILL - 2"x2" X CAR WIDTH - 116 REQD. NOT
TO BE NAILED TO CAR WALL OR SIDE FILL.</p> <p>④ - HORIZONTAL MEMBERS OF CENTER GATE -
2"x6" MATL. - (SEE DETAIL B) - 3 REQD PER GATE</p> <p>⑤ - UPRIGHTS OF CENTER GATE - 2"x6" X 30" -
5 REQD PER GATE. NAIL TO ④ WITH 3-10 d
NAILS EACH JOINT. (SEE DETAIL B)</p> | <p>⑥ - CLEATS, 1"x4" MATL. CUT TO FIT - 10 REQD
PER CAR - NAIL TO GATE UPRIGHTS ⑤ &
WEDGED FILL ⑦ WITH 5-10 d NAILS EACH
CLEAT.</p> <p>⑦ - WEDGE FILL, 6" WIDE X 30" - AS REQD.</p> <p>⑧ - INTERMEDIATE FLOOR - 1" MATL. -
RANDOM WIDTHS & LENGTHS - MAY BE
SPACED AT MAX. OF 2" APART.</p> |
|---|---|

NOTE *

THIS GATE MAY BE USED FOR END
BULKHEAD. WHERE CAR ENDS ARE IN
A BOWED CONDITION,
FILL BETWEEN GATE UPRIGHTS AND
THE CAR WALL, AS REQUIRED.

COMPLETE ROUNDS IN METAL CONTAINERS



NOTE:
THIS GATE MAY BE USED FOR END BULKHEAD WHERE CAR ENDS ARE IN A BOWED CONDITION. OMIT CLEATS AND FILL BETWEEN GATE UPRIGHTS AND THE CAR WALL AS REQUIRED.

KEY NUMBERS & NOTES

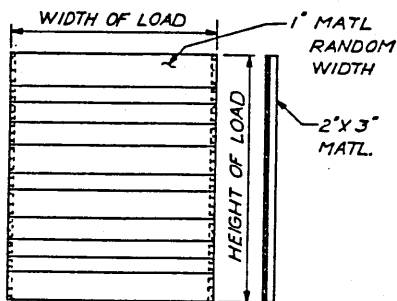
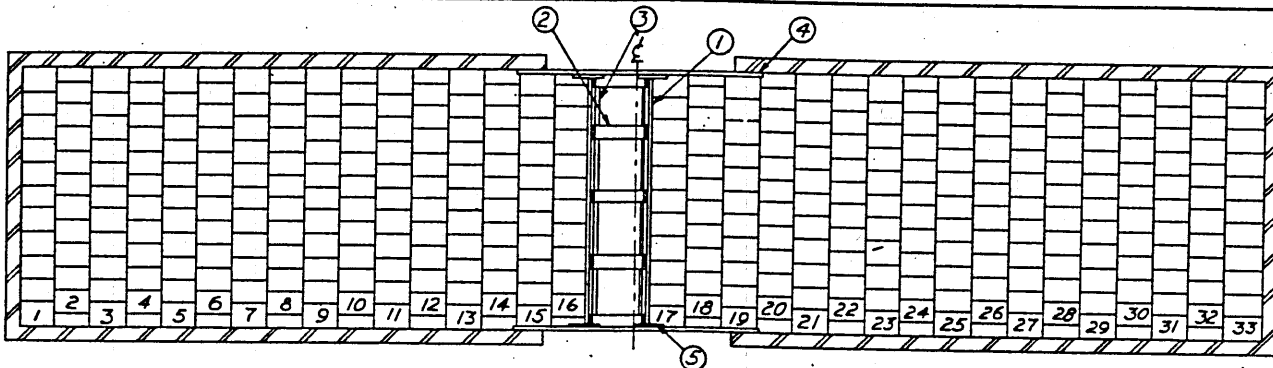
- ① - CENTER GATES ARE NOT TO BE NAILED TO CAR. (SEE DETAIL) - 2"x6" MATL.
- ② - STRUTS (AS REQ'D) - 2"x6" MATL. (CUT TO FIT) NAIL TOGETHER WITH 1-12d NAIL EVERY 6". TO NAIL TO GATE UPRIGHT WITH 3-16d NAILS EACH END.
- ③ - CLEATS (AS REQ'D) - 2"x2" MATL. CUT TO FIT. NAIL TO GATE UPRIGHTS WITH 2-10d NAILS EACH JOINT.
- ④ - GATE HOLD DOWN (AS REQ'D) - 2"x6"x24" LAMINATED NAIL TO CAR WALL OVER GATES WITH 5-16d NAILS EACH. IF GATES ARE 12" OR LESS FROM DOORWAY OR EXTEND BEYOND THE DOORWAY, THEN 2"x6"x8'-0" MUST BE USED ACROSS DOORWAY WITH 2"x6"x12" CLEATS NAILED TO HOLD DOWN OVER GATES.
- ⑤ - CLEATS - 2"x6"x24" LAMINATED (AS REQ'D) NAIL TO CAR WALL ABOVE EACH END OF HOLD DOWN WITH 5-16d NAILS.
- ⑥ - VERTICAL STRUT BRACES (AS REQ'D) - 2"x4" CUT TO FIT NAIL TO STRUTS WITH 4-12d NAILS EACH JOINT.

KEY NUMBERS & NOTES (CON'T)

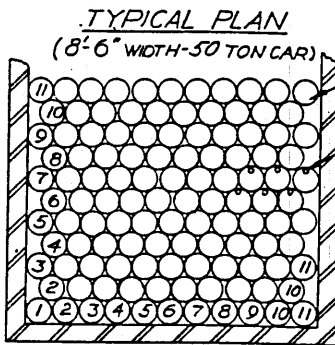
- ⑦ - HORIZONTAL STRUT BRACES (AS REQ'D) 2"x4" CUT TO FIT - NAIL TO STRUTS WITH 3-12d NAILS EACH JOINT. IF STRUTS ARE 48" OR LESS NO BRACES ARE NEEDED.
- ⑧ - FILL AS REQUIRED TO MAINTAIN LEVEL LAYERS WHEN STACKING.

NOTE *
CONTAINERS MAY BE ALTERNATED, CAP & BASE INDIVIDUALLY OR BY LAYER IN ORDER TO UTILIZE THE MAXIMUM OF THE CAR WIDTH.

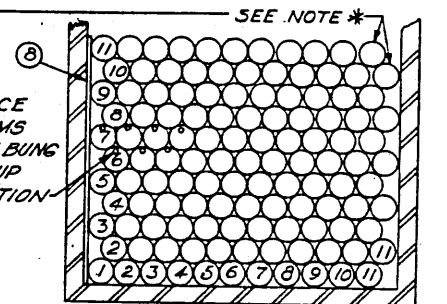
BLACK POWDER- 25 LB. MTL DRUM



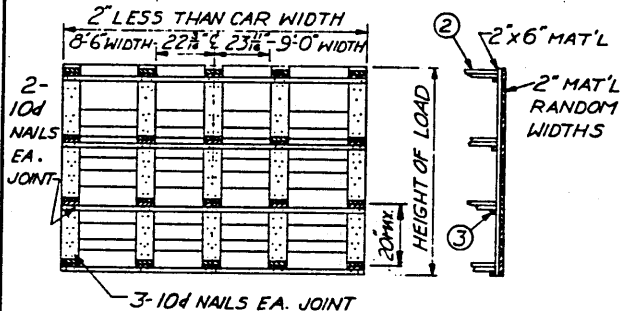
DETAIL-DOOR GATE
(2 REQ'D)



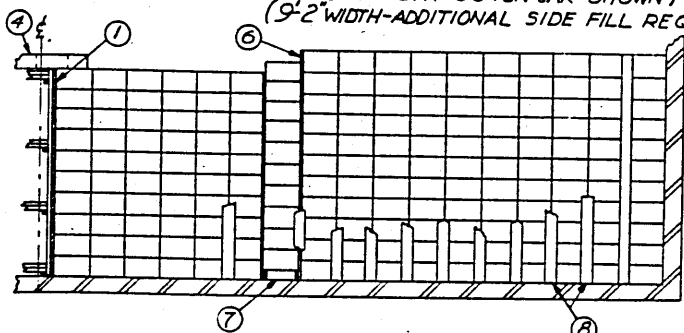
TYPICAL CROSS SECTION
(8'6" WIDTH-50 TON CAR)



TYPICAL CROSS SECTION
(9'0" WIDTH-50 TON CAR SHOWN)
(9'2" WIDTH-ADDITIONAL SIDE FILL REQ'D.)



DETAIL-TYPICAL CENTER GATE
(2 REQ'D)



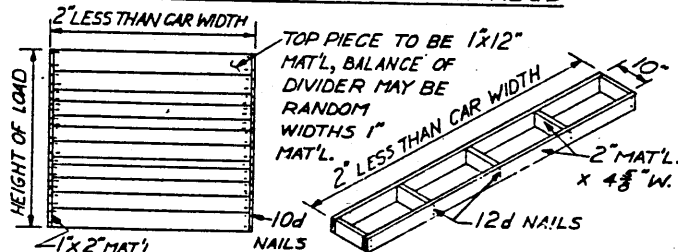
TYPICAL PARTIAL ELEVATION SHOWING PLACEMENT
OF SIDE FILL, RISERS & DIVIDERS AS REQ'D

NOTE:

THIS GATE MAY BE USED FOR END BULKHEAD WHERE CAR ENDS ARE IN A BOWED CONDITION. OMIT CLEATS AND FILL BETWEEN GATE UPRIGHTS AND CAR WALL

KEY NUMBERS & NOTES

- ① CENTER GATES ARE NOT TO BE NAILED TO CAR. (SEE DETAIL) (2 REQ'D)
- ② STRUTS (AS REQ'D) 2"x6" MAT'L. CUT TO FIT. NAIL TOGETHER WITH 1-12d NAIL EVERY 6". TOENAIL TO GATE UPRIGHTS WITH 3-16d NAILS EA. JOINT.
- ③ CLEATS (AS REQ'D) 2"x2" X LENGTH OF GATE. NAIL TO GATE UPRIGHTS WITH 2-10d NAILS EA. JOINT.
- ④ GATE HOLD DOWN 2"x6" X 8'-0" (2 REQ'D) NAIL TO CAR WALL OVER GATES WITH 5-10d NAILS EA. END.
- ⑤ CLEATS- 2"x6" X 12" (4 REQ'D) NAIL TO HOLD DOWN OVER GATES WITH 5-16d NAILS EACH.
- ⑥ DIVIDERS- (4 REQ'D) SEE DETAIL
- ⑦ RISERS (2 REQ'D) SEE DETAIL.
- ⑧ SIDE FILL (AS REQ'D) TO MAINTAIN LEVEL LAYERS WHEN STACKING. NAIL TO CAR WALL WITH 1-16d NAIL EVERY 12".



DETAIL-TYPICAL DIVIDER
(4 REQ'D)

DETAIL-TYPICAL RISER
(2 REQ'D)

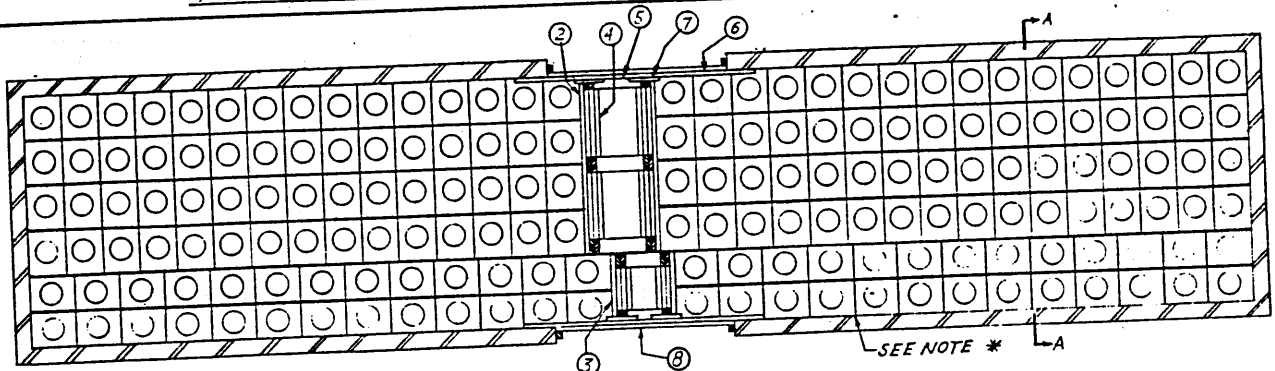
NOTE *

ARRANGEMENT OF DRUMS SHOWN APPLIES TO EVEN NUMBERED STACKS. EACH LAYER OF DRUMS IN ODD NUMBERED STACKS TO BE POSITIONED OPPOSITE OF THAT SHOWN.

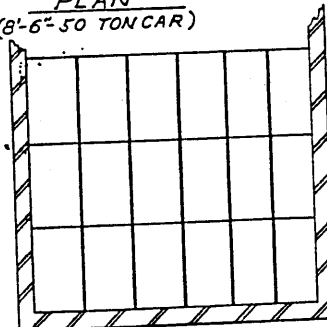
CAUTION:

SEE NOTE 2, PAGE 2.

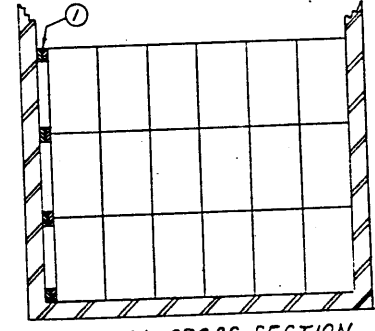
POWDER PROPELLENT-METAL LINED WOODEN BOX



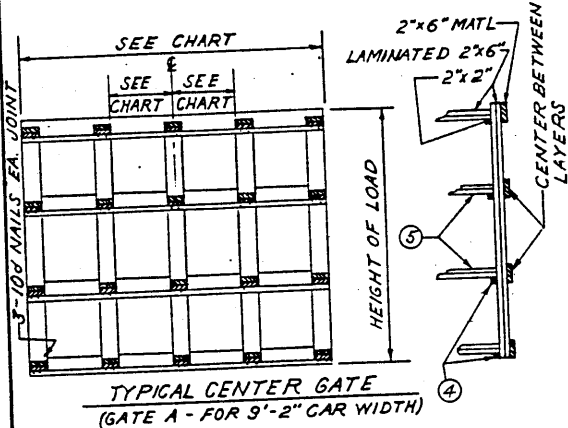
PLAN
(8'-6" - 50 TON CAR)



SECTION A-A



TYPICAL CROSS SECTION
(9'-2" - 50 TON CAR)



TYPICAL CENTER GATE
(GATE A - FOR 9'-2" CAR WIDTH)

NOTE:
THIS GATE (A) MAY BE USED FOR END BULKHEAD WHERE CAR ENDS ARE IN A BOWED CONDITION OMIT CLEATS AND FILL BETWEEN GATE UPRIGHTS AND THE CAR WALL AS REQUIRED.

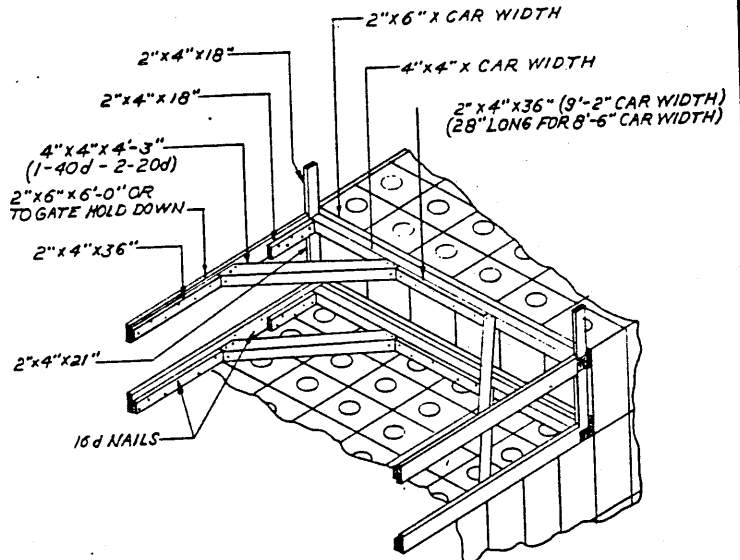
GATE CHART				
GATE	CAR WIDTH	DIM. HORIZONTAL MEMBER ①	NO. OF UPRIGHTS ②	SPACING OF UPRIGHTS
A	9'-2"	3 1/2" LESS THAN CAR WIDTH	5	1 EA. END 1 ON ④ 1-22" EA SIDE OF ④
B	8'-6"	70"	3	1 EA. END 1 ON ④
C	8'-6"	29"	2	1 EA. END

NOTE ①
NAIL HORIZONTAL MEMBERS TO GATE UPRIGHTS WITH 3-10d NAILS EACH JOINT.

NOTE ②
NAIL 2"x6" UPRIGHTS TOGETHER WITH 1-10d NAIL EVERY 8".

KEY NUMBERS & NOTES

- ① - SIDE FILL (FOR 9'-2" CAR WIDTH) - LAMINATED 2"x4" X CAR LENGTH - AS REQ'D. - NAIL TO CAR WALL WITH 10d NAILS EVERY 12"
- ② - GATE B - SEE GATE DETAIL & CHART.
- ③ - GATE C - SEE GATE DETAIL & CHART.
- ④ - CLEATS - 2"x2" X GATE LENGTH - 4 REQ'D. SEE GATE DETAIL & CHART. NAIL TO GATE UPRIGHTS WITH 2 10d NAILS EACH JOINT.
- ⑤ - STRUTS - LAMINATED 2"x6" - CUT TO FIT - AS REQ'D. SEE GATE DETAIL - NAIL TOGETHER WITH 1-12d NAIL EVERY 6" TO NAIL TO GATE UPRIGHTS WITH 3-16d NAILS EACH JOINT.
- ⑥ - GATE HOLD DOWN - 2"x6"x18'-0" - NAIL TO CAR WALL WITH 5-16d NAILS EACH END. 2 REQ'D.
- ⑦ - HOLD DOWN CLEATS - 2"x6"x12" - 4 REQ'D - NAIL TO GATE HOLD DOWN OVER GATES WITH 5-16d NAILS EACH CLEAT.
- ⑧ - DOOR GATE - SEE DETAIL.

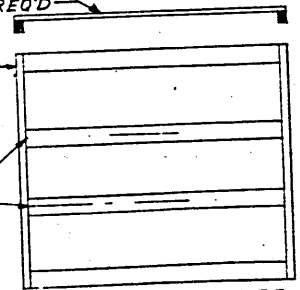


TYPICAL K-BRACING OF PARTIAL LAYER
(SHOWN FOR 9'-2" CAR WIDTH) *

NOTE *:
WHEN THIS K-BRACING IS USED IN 8'-6" CAR, SOLID FILL AS REQ'D MUST BE USED TO MAKE EVEN END ROW.

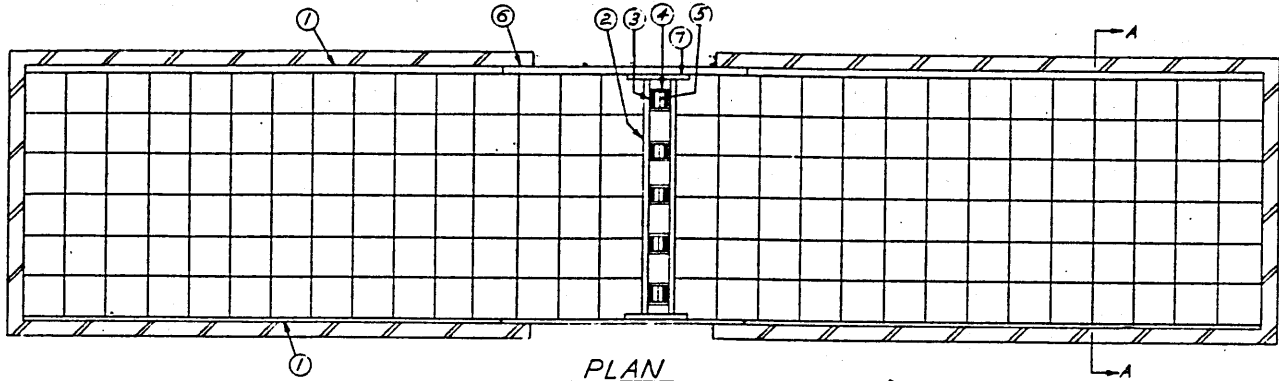
1"x6" X DOOR WIDTH - 4 REQ'D
NAIL TO UPRIGHTS WITH 6d NAILS
2"x3" X HT OF LOAD - 2 REQ'D

CENTER BETWEEN LAYERS

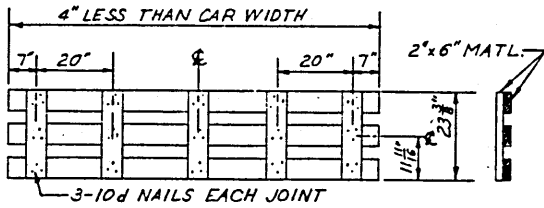


TYPICAL FLUSH TYPE DOOR GATE
2 REQ'D. EACH CAR

POWDER PROPELLENT MIT WOODEN BOX



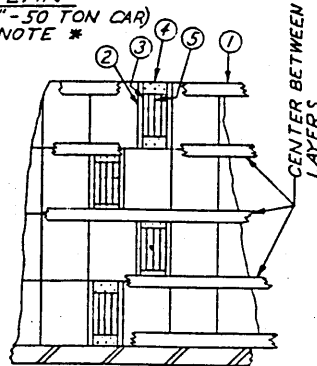
PLAN
(8'-6" - 50 TON CAR)
SEE NOTE *



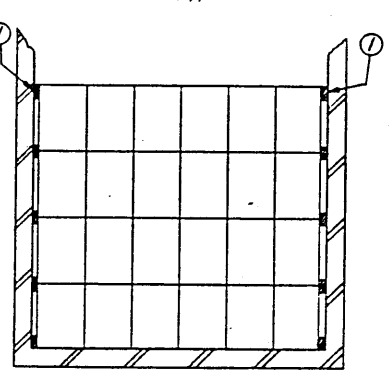
DETAIL "A"
CENTER GATE
8 REQ. PER CAR

NOTE:

THIS GATE MAY BE USED FOR END BULKHEAD, WHERE CAR ENDS ARE IN A BOWED CONDITION OMIT CLEATS AND FILL BETWEEN GATE UPRIGHTS AND THE CAR WALL AS REQD.



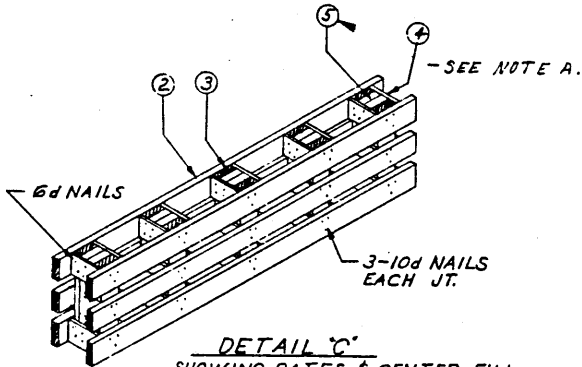
DETAIL "B"
(SHOWING POSITIONING OF GATES & CENTER FILL)



SECTION "A-A"

NOTE *

8'-6" CAR WIDTH SHOWN IS RECOMMENDED. CARS OF GREATER WIDTH WILL REQUIRE EXCESSIVE SIDE FILL



DETAIL "C"
SHOWING GATES & CENTER FILL

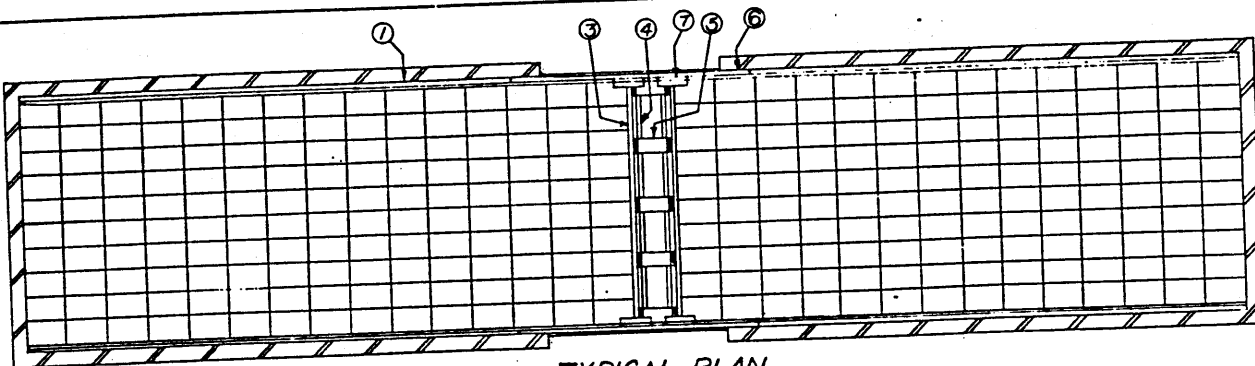
KEY NUMBERS & NOTES

- ① - SIDE FILL - 2"x4" MATL. (ROUGH OR FINISHED AS REQD.) x CAR LENGTH. NAIL TO CAR WALL WITH 10d NAILS EVERY 12"
- ② - HORIZONTAL MEMBERS OF CENTER GATE - 2"x6" MATL. - SEE DETAIL "A", 3 REQ. PER GATE. NAIL TO ③ WITH 3-10d NAILS EA. JT.
- ③ - UPRIGHTS OF CENTER GATE - 2"x6"x23 3/8" - 5 REQ. PER GATE - SEE DETAIL "A"
- ④ - CLEATS - 1"x4" MATL. - CUT TO FIT - 80 REQ. PER CAR - NAIL TO GATE UPRIGHTS ③ & WEDGED FILL ⑤ WITH 5-6d NAILS EACH CLEAT. SEE DETAILS B & C.
- ⑤ - WEDGE FILL - 2"x6"x23 3/8" - AS REQD. - SEE DETAIL "C"
- ⑥ - GATE HOLD DOWN - 2"x6"x8'-0" - 2 REQD. - NAIL TO CAR WALL WITH 5-16d NAILS EACH END.
- ⑦ - HOLD DOWN CLEATS - 2"x6"x24" - 2 REQD. NAIL TO GATE HOLD DOWN WITH 8-16d NAILS.

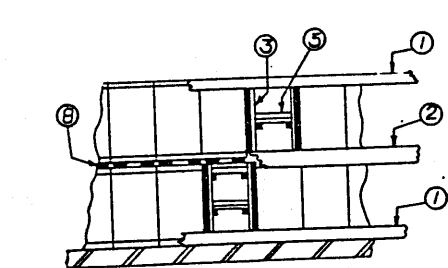
NOTE A:

CARE SHOULD BE EXERCISED IN DRIVING WEDGE MATERIAL SO THAT BOXES IN LAYER DIRECTLY UNDERNEATH ARE NOT DAMAGED.

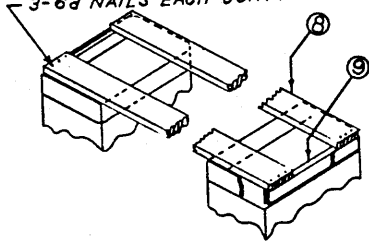
POWDER, PROPELLANT, BOX, STEEL, M2



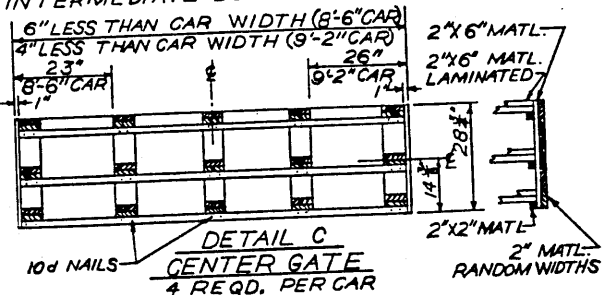
TYPICAL PLAN



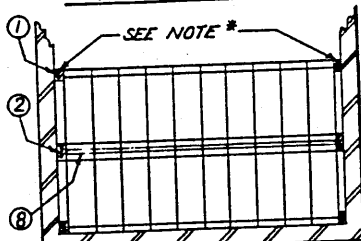
DETAIL A
(SHOWING POSITIONING OF DUNNAGE)
3-6d NAILS EACH JOINT



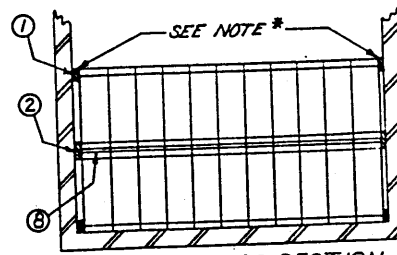
DETAIL B
(SHOWING POSITIONING OF INTERMEDIATE DUNNAGE)



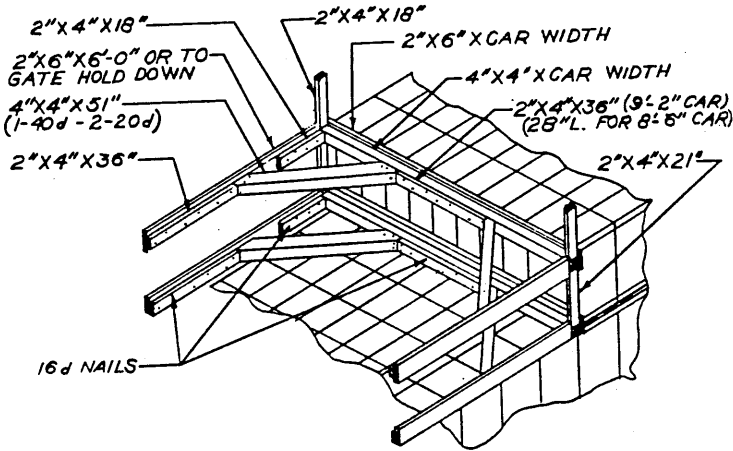
NOTE:
THIS GATE MAY BE USED FOR END BULKHEAD WHERE CAR ENDS ARE IN A BOWED CONDITION. OMIT CLEATS AND FILL BETWEEN GATE UPRIGHTS AND THE CAR WALL AS REQUIRED.



TYPICAL CROSS SECTION
(8'-6" - 50 TON CAR)



TYPICAL CROSS SECTION
(9'-2" - 50 TON CAR)



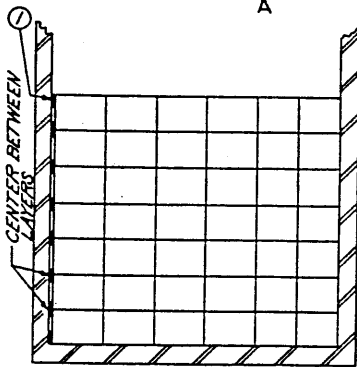
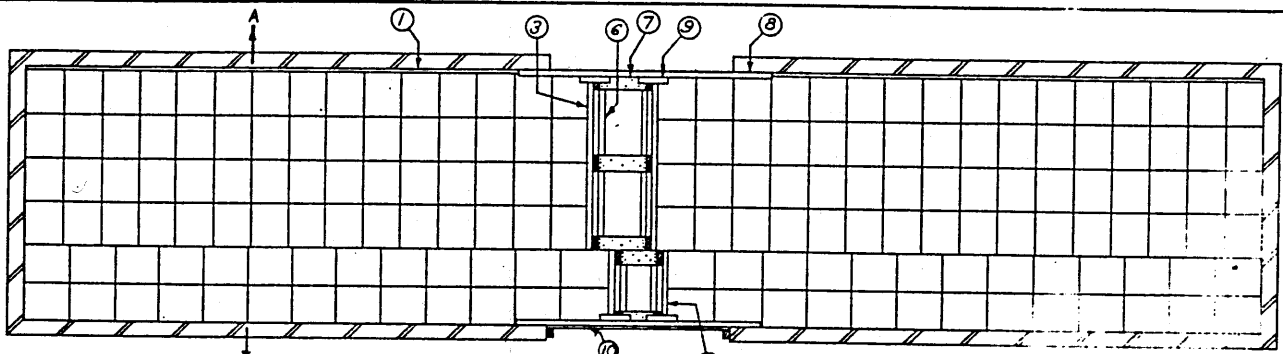
TYPICAL K-BRACING OF PARTIAL LAYER

NOTE*:
DUE TO THE FACT THAT THIS BOX IS OFTEN SLIGHTLY BULGED AT THE SIDES, THE VOID SPACE ACROSS WIDTH OF CAR COULD BE LESS THAN SHOWN. THIS DRAWING INDICATES THE MAXIMUM SIDE FILL WHICH COULD BE EXPECTED.

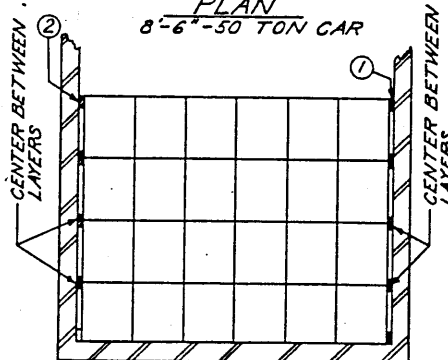
KEY NUMBERS & NOTES

- ① - SIDE FILL - 1"X4" &/OR 2"X4" (AS REQD) X LENGTH OF CAR. NAIL TO CAR WALL AT TOP & BOTTOM OF LOAD WITH 10d NAILS EVERY 12"
- ② - SIDE FILL - 1"X6" &/OR 2"X6" (AS REQD) X LENGTH OF CAR. NAIL TO CAR WALL, CENTERED BETWEEN LAYERS, WITH 10d NAILS EVERY 12"
- ③ - CENTER GATES - 2"X6" MATL. - SEE DETAIL C. NAIL HORIZONTAL MEMBERS TO UPRIGHTS WITH 3-10d NAILS EACH JOINT.
- ④ - CLEATS - 2"X2" X GATE LENGTH (SEE DETAIL B) - AS REQD. - NAIL TO GATE UPRIGHTS WITH 2-10d NAILS EACH JOINT.
- ⑤ - STRUTS - 2"X6" LAMINATED - CUT TO FIT - AS REQD. (SEE DETAIL C) - NAIL TOGETHER WITH 12d NAILS EVERY 3" NAIL TO ④ WITH 3-16d NAILS EACH JOINT. TO NAIL TO GATE WITH 2-16d NAILS EACH END.
- ⑥ - GATE HOLD DOWN - 2"X6" X 6'-0" - 2 REQD. NAIL TO CAR WALL WITH 5-16d NAILS EACH END.
- ⑦ - HOLD DOWN CLEATS - 2"X6" X 1/2" - 1 REQD. NAIL TO ⑥ WITH 5-16d NAILS.
- ⑧ - 1"X4" X 8'-0" (FOR 8'-6" CAR) (8'-8" LONG FOR 9'-2" CAR) - 58 REQD. NAIL TO ⑨ WITH 3-6d NAILS EACH JOINT (SEE DETAIL B)
- ⑨ - 1"X2" X 14" - 58 REQD. (SEE DETAIL B)

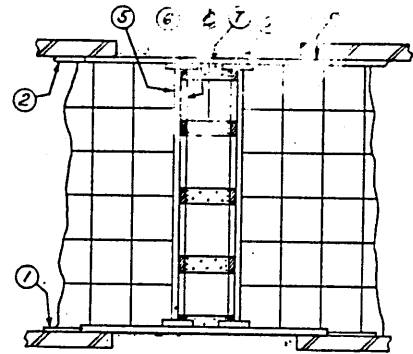
POWDER, PROPELLANT, IN WDN. & ALT. WDN. BOX



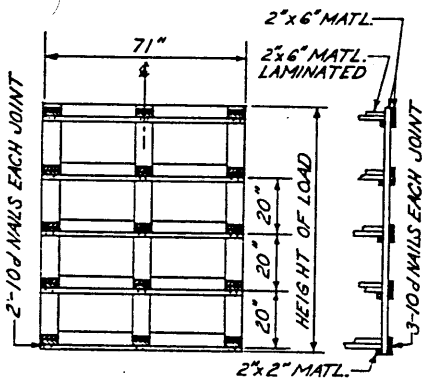
SECTION A-A



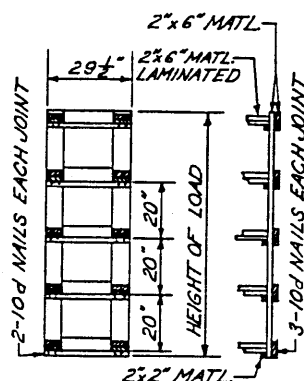
TYPICAL CROSS SECTION
9'-2" - 50 TON CAR



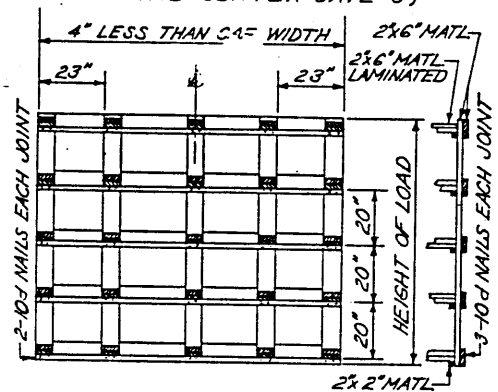
PARTIAL PLAN
9'-2" - 50 TON CAR
(SHOWING POSITIONING OF BOXES AND CENTER GATE C)



DETAIL 3
CENTER GATE A
2 REQD. PER 8'-6" 50 TON CAR



DETAIL 4
CENTER GATE B
2 REQD. PER 8'-6" 50 TON CAR



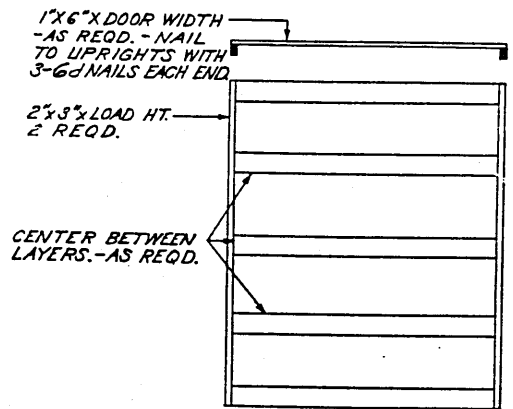
DETAIL 5
CENTER GATE C (SEE NOTE *)
2 REQD. PER 9'-2" 50 TON CAR

KEY NUMBERS & NOTES

- ① SIDE FILL - 1"x4" (ROUGH LUMBER) x CAR LENGTH - AS REQD. - NAIL TO CAR WALL WITH 10d NAILS EVERY 12"
- ② SIDE FILL - 2"x4" (ROUGH LUMBER) x CAR LENGTH - AS REQD. - NAIL TO CAR WALL WITH 10d NAILS EVERY 12"
- ③ GATE A - SEE DETAIL 3
- ④ GATE B - SEE DETAIL 4
- ⑤ GATE C - SEE DETAIL 5
- ⑥ CLEATS - 2"x2" x GATE LENGTH - AS REQD. - SEE GATE DETAILS NAIL TO GATE UPRIGHTS WITH 2-10d NAILS EACH JOINT.
- ⑦ STRUTS - LAMINATED 2"x6" MATL. (AS REQD.) - CUT TO FIT - NAIL TOGETHER WITH 1-12d NAIL EVERY 6". TO NAIL TO GATE UPRIGHTS WITH 3-16d NAILS EACH JOINT.
- ⑧ GATE HOLD DOWN - 2"x6" x 8'-0" - 2 REQD. - NAIL TO CAR WALL WITH 5-16d NAILS EACH END.
- ⑨ HOLD DOWN CLEATS - 2"x6" x 12" - 4 REQD. - NAIL TO GATE HOLD DOWN ⑧ OVER GATES WITH 5-16d NAILS EACH CLEAT.
- ⑩ DOOR GATE - SEE DETAIL.

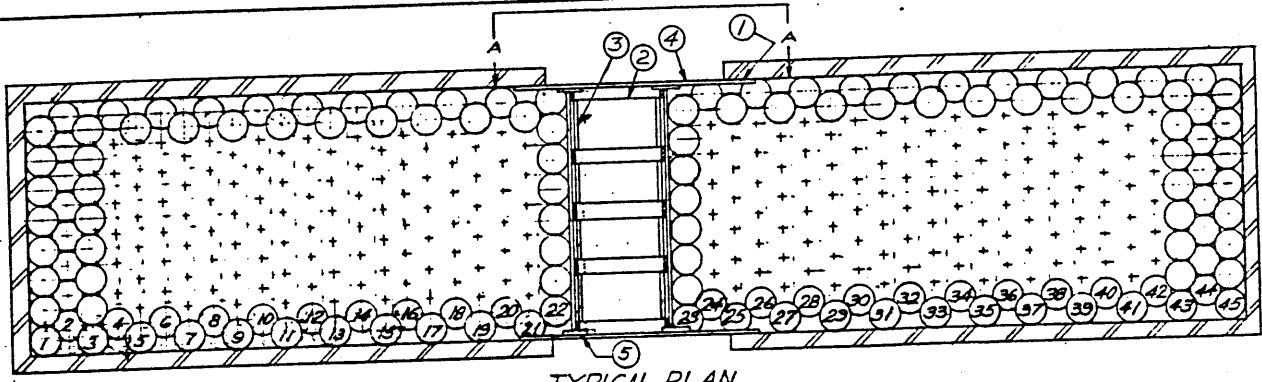
NOTE *

THIS GATE (GATE C) MAY BE USED FOR END BULKHEAD, WHERE CAR ENDS ARE IN A BOWED CONDITION OMIT CLEATS & FILL BETWEEN GATE UPRIGHTS AND THE CAR WALL AS REQD.



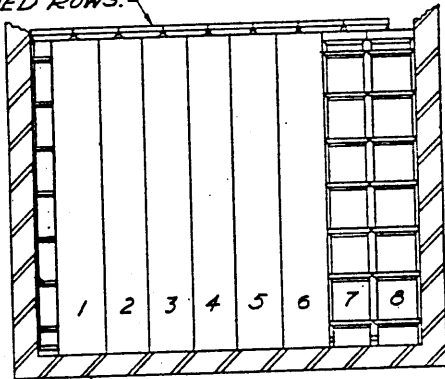
TYPICAL FLUSH TYPE
DOORWAY PROTECTION
1 REQD. (8'-6" CAR ONLY)

CHARGE PROPELLING, MTL. CNTR. (T64)

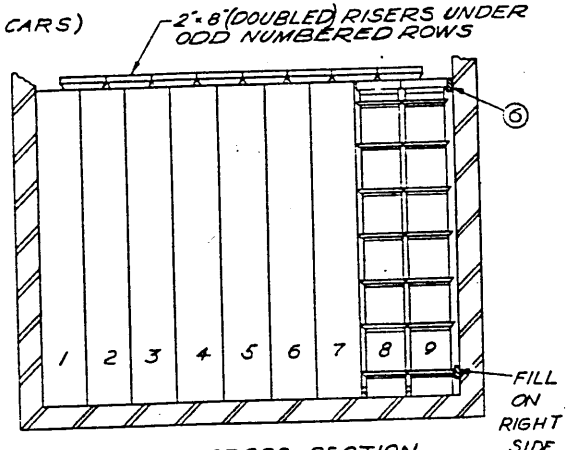


TYPICAL PLAN
(8'-6" WIDTH - 40 & 50 TON CARS)

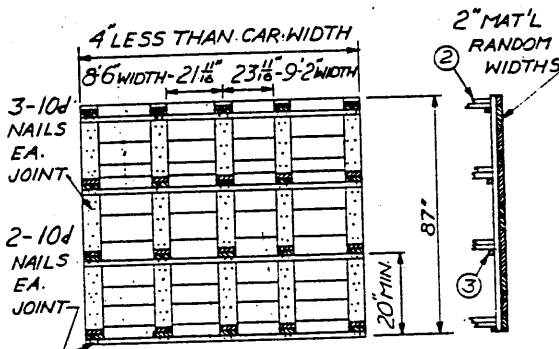
2" x 8" (DOUBLED) RISERS UNDER ODD NUMBERED ROWS.



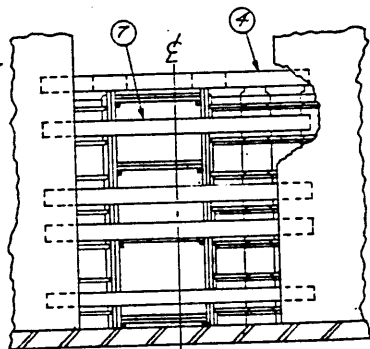
TYPICAL CROSS SECTION
(8'-6" WIDTH 40 & 50 TON CARS)



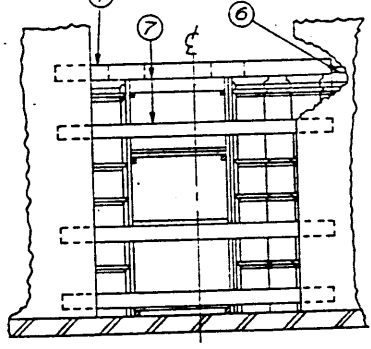
TYPICAL CROSS SECTION
(9'-2" WIDTH - 40 & 50 TON CARS)



DETAIL - CENTER GATE
(2 REQ'D)



VIEW A-A
8'-6" WIDTH CARS - SHOWING DOOR PROTECTION



VIEW A-A
9'-2" WIDTH CARS - SHOWING DOOR PROTECTION - RIGHT SIDE. LEFT SIDE SAME AS 8'-6" WIDTH

NOTE:
THIS GATE MAY BE USED FOR END BULKHEAD WHERE CAR ENDS ARE IN A BOWED CONDITION. OMIT CLEATS AND FILL BETWEEN GATE UPRIGHTS AND CAR WALL AS REQUIRED.

KEY NUMBERS & NOTES

- ① - CENTER GATES. NOT TO BE NAILED TO CAR (2 REQ'D) (SEE DETAIL)
- ② - 2" x 6" MAT'L (LAMINATED) CUT TO FIT (20 REQ'D) NAIL TOGETHER WITH 1-12d NAIL EA. 8" TO NAIL TO GATE UPRIGHTS WITH 3-16d NAILS EA. END.
- ③ - 2" x 2" x LENGTH OF GATE. (8 REQ'D) NAIL TO GATE UPRIGHTS WITH 2-10d NAILS EA. JOINT.
- ④ - 2" x 6" x 8'-0" GATE HOLD DOWN (2 REQ'D) NAIL TO CAR WALL WITH 4-16d NAILS EA. END.
- ⑤ - 2" x 6" x 12" CLEATS (4 REQ'D) NAIL TO HOLD DOWN OVER GATES WITH 4-16d NAILS.

- ⑥ - 2" x 4" x 32'-6" APPROX. - SIDE FILL FOR 9'-2" WIDTH CAR (8 REQ'D) NAIL TO CAR WALL WITH 1-10d NAIL EVERY 12". FOR LOCATION SEE TYPICAL CROSS SECTION - 9'-2" WIDTH CAR.
- ⑦ - 2" x 6" x 8'-0" DOOR PROTECTION (8 REQ'D) NAIL TO CAR WALL WITH 5-12d NAILS EA. END. FOR LOCATION SEE VIEW A-A FOR 8'-6" & 9'-2" WIDTH CARS.

TABULAR DATA 8'-6" x 40'-6" - 50 TON BOX CAR

L I N E	AIC SYMBOL	PACKING	PKG. WT. LBS.	APPROX DIM. OF PKG. IN INCHES	PAGE FOR TYPICAL PLAN SECT, ETC	CNTRS WIDTH OF CAR	CNTRS LENGTH OF CAR	CNTRS HEIGHT OF CAR	TOTAL CNTRS	APPROX. TOTAL WT INCL. MATL. IN LBS.	APPROX. SPACE AT CENTER (INCHES)	HEIGHT OF CENTER GATE (INCHES)	MATERIALS		L I N E
													LUMBER BOARD FEET	NAILS LBS.	
CHARGE, PROPELLING, MTL. CNTR, MK 1															
1	P2FCB	1/MTL.CNTR	41.6	43 1/4 x 10 x 10	3	9 1/2	10	5 9/10	1050	45,397	53	96	679	19	1
2	R2MAB	1/MTL.CNTR	29.9	30 1/2 x 10 x 10	3	9 1/2	14	5 9/10	1470	45,826	59	96	740	23	2
3	R2MBC	1/MTL.CNTR	52.9	30 1/2 x 10 x 10	3	9 1/2	14	5 9/10	1470	79,636	59	96	740	23	3
4															4
5															5
6															6
CHARGE, PROPELLING, MTL. CNTR, M9 & M9A1															
7	P2KBA	1/MTL.CNTR	146	63 x 10 3/8 x 10 3/8	3	9	6	10	540	81,247	108	94	950	32	7
8	P2JBA	1/MTL.CNTR	146	63 x 10 3/8 x 10 3/8	3	9	6	10	540	81,247	108	94	950	32	8
9															9
10															10
11															11
CHARGE, PROPELLING, MTL. CNTR, M9E1															
12	P2TAA	1/MTL.CNTR	190	80 x 10 5/8 x 10 5/8	4	9	54	1	486	93,561	23	63	482	16	12
13															13
14															14
15															15
CHARGE, PROPELLING, MTL. CNTR, M10 SERIES															
16	P2KAA	1/MTL.CNTR	101	55 x 10 1/2 x 10 1/2	3	9 1/2	8	5 9/10	760	78,139	46	89	543	21	16
17	P20BF	2/MTL.CNTR	77	55 x 10 1/2 x 10 1/2	3	9 1/2	8	5 9/10	760	59,899	46	89	543	21	17
18	P2SAA	1/MTL.CNTR	105	55 x 10 1/2 x 10 1/2	3	9 1/2	8	5 9/10	760	81,179	46	89	543	21	18
19	P2SAB	1/MTL.CNTR	105	55 x 10 1/2 x 10 1/2	3	9 1/2	8	5 9/10	760	81,179	46	89	543	21	19
20															20
21															21
CHARGE, PROPELLING, MTL. CNTR., M12															
22	R2PAB	1/MTL.CNTR	79.4	28 3/8 x 6 3/8 x 6 3/8	3	15 1/2	14	3 15/16	1526	122,395	85	39	487	13	22
23															23
24															24
25															25
CHARGE, PROPELLING, MTL. CNTR., M13 & M13A1 (SEE NOTE 3, PAGE 2)															
26	R2MCB	1/MTL.CNTR	30.5	27 3/4 x 7 3/8 x 7 3/8	3	13	14	15	2730	86,223	97	96	1168	38	26
27	R2MBD	1/MTL.CNTR	30.5	27 3/4 x 7 3/8 x 7 3/8	3	13	14	15	2730	86,223	97	96	1168	38	27
28	R2MCG	1/MTL.CNTR	30.5	27 3/4 x 7 3/8 x 7 3/8	3	13	14	15	2730	86,223	97	96	1168	38	28
29															29
30															30
CHARGE, PROPELLING, MTL. CNTR., M14															
31	R2MAD	2/MTL.CNTR	28.5	37 3/4 x 6 3/8 x 6 3/8	3	15 1/2	10	8 15/16	2640	77,650	108	94	952	30	31
32	R2MAH	2/MTL.CNTR	29	37 3/4 x 6 3/8 x 6 3/8	3	15 1/2	10	8 15/16	2640	78,970	108	94	952	30	32
33															33
34															34
CHARGE, PROPELLING, MTL. CNTR., M15															
35	P2FCD	1/MTL.CNTR	41.6	43 1/2 x 10 x 10	3	9 1/2	10	5 9/10	1050	45,343	53	96	658	18	35
36															36
37															37
38															38
CHARGE, PROPELLING, MTL. CNTR., M16															
39	P2EAB	1/MTL.CNTR	54.6	42 3/4 x 8 1/2 x 8 1/2	3	11 1/2	10	7 11/12	1610	89,581	58	98	660	25	39
40	P2EAG	1/MTL.CNTR	54.6	42 3/4 x 8 1/2 x 8 1/2	3	11 1/2	10	7 11/12	1610	89,581	58	98	660	25	40
41															41
42															42

TABULAR DATA FOR 9'-2" x 40'-6" - 50 TON BOX CAR

L I N E	AIC SYMBOL	PACKING	PKG WT. LBS.	APPROX. DIM. OF PKG. IN INCHES	PAGE FOR TYPICAL PLAN SECT, ETC.	CNTRS WIDTH OF CAR	CNTRS, LENGTH OF CAR	CNTRS, HEIGHT OF CAR	TOTAL CNTRS	APPROX. TOTAL WT. INCL. MATL IN LBS.	APPROX. SPACE AT CENTER (INCHES)	HEIGHT OF CENTER GATE (INCHES)	MATERIALS		L I N E
													LUMBER BOARD FEET	NAILS LBS.	
CHARGE, PROPELLING, MTL. CNTR., MK I															
1	P2FCB	//MTL.CNTR	41.6	43 1/2 X 10 X 10	3	10 1/2	11	5 1/2 @ 11	1160	50,189	53	96	762	28	1
2	R2MAB	//MTL.CNTR	29.9	30 1/2 X 10 X 10	3	10 1/2	14	5 1/2 @ 11	1624	50,555	59	96	787	29	2
3	R2MBC	//MTL.CNTR	52.9	30 1/2 X 10 X 10	3	10 1/2	14	5 1/2 @ 11	1624	87,907	59	96	787	29	3
4															4
5															5
6															6
CHARGE, PROPELLING, MTL. CNTR., M9 & M9A1															
7	P2KBA	//MTL.CNTR	146	63 X 10 1/2 X 10 1/2	3	10	6	10	600	90,104	108	94	990	29	7
8	P2JBA	//MTL.CNTR	146	63 X 10 1/2 X 10 1/2	3	10	6	10	600	90,104	108	94	990	29	8
9															9
10															10
11															11
CHARGE, PROPELLING, MTL. CNTR., M9E1															
12	P2TAA	//MTL.CNTR	190	80 X 10 1/2 X 10 1/2	4	9 1/2	10	54	514	98,936	23	83	504	16	12
13															13
14															14
15															15
CHARGE, PROPELLING, MTL. CNTR., M10 SERIES															
16	P2KAA	//MTL.CNTR	101	55 X 10 1/2 X 10 1/2	3	10	8	10	800	82,824	46	90	797	31	16
17	P2OBF	//MTL.CNTR	101	55 X 10 1/2 X 10 1/2	3	10	8	10	800	82,824	46	90	797	31	17
18	P2SAA	//MTL.CNTR	105	55 X 10 1/2 X 10 1/2	3	10	8	10	800	86,024	46	90	797	31	18
19	P2SAB	//MTL.CNTR	105	55 X 10 1/2 X 10 1/2	3	10	8	10	800	86,024	46	90	797	31	19
20															20
21															21
CHARGE, PROPELLING, MTL. CNTR., M12															
22	R2PAB	//MTL.CNTR	79.4	28 1/2 X 6 1/2 X 6 1/2	3	17	14	6	1428	115,363	85	32	779	32	22
23															23
24															24
25															25
CHARGE, PROPELLING, MTL. CNTR., M13 & M13A1															
26	R2MBC	//MTL.CNTR	30.5	27 1/2 X 7 1/2 X 7 1/2	3	14	14	15	2940	92,461	97	96	1101	38	26
27	R2MBD	//MTL.CNTR	30.5	27 1/2 X 7 1/2 X 7 1/2	3	14	14	15	2940	92,461	97	96	1101	38	27
28	R2MCG	//MTL.CNTR	30.5	27 1/2 X 7 1/2 X 7 1/2	3	14	14	15	2940	92,461	97	96	1101	38	28
29															29
30															30
CHARGE, PROPELLING, MTL. CNTR., M14															
31	R2MAD	//MTL.CNTR	28.5	37 1/2 X 6 1/2 X 6 1/2	3	17	10	17	2890	84,302	108	94	763	29	31
32	R2MAH	//MTL.CNTR	29	37 1/2 X 6 1/2 X 6 1/2	3	17	10	17	2890	85,747	108	94	763	29	32
33															33
34															34
CHARGE, PROPELLING, MTL. CNTR., M15															
35	P2FCD	//MTL.CNTR	41.6	43 1/2 X 10 X 10	3	10 1/2	10	5 1/2 @ 11	1050	45,613	53	96	762	28	35
36															36
37															37
38															38
CHARGE, PROPELLING, MTL. CNTR., M16															
39	P2EAB	//MTL.CNTR	54.6	42 1/2 X 8 1/2 X 8 1/2	3	13	10	14	1820	101,306	58	98	764	24	39
40	P2EAG	//MTL.CNTR	54.6	42 1/2 X 8 1/2 X 8 1/2	3	13	10	14	1820	101,306	58	98	764	24	40
41															41
42															42

TABULAR DATA 8'-6" x 40'-6" — 50 TON BOX CAR

LINE	AIC SYMBOL	PACKING	PKG. WT. LBS.	APPROX. DIM. OF PKG. IN INCHES	PAGE FOR TYPICAL PLAN SECT. ETC.	CNTRS. WIDTH OF CAR	CNTRS. LENGTH OF CAR	CNTRS. HEIGHT OF CAR	TOTAL CNTRS	APPROX. TOTAL WT INCL. MATL IN LBS.	APPROX. SPACE AT CENTER (INCHES)	HEIGHT OF CENTER GATE (INCHES)	MATERIALS		LINE
													LUMBER BOARD FEET	NAILS LBS.	
CHARGE, PROPELLING, MTL. CNTR., M17															
1	R2PBB	MTL. CNTR.	18.3	28 5/8 x 5 1/2 x 5 1/2	3	19	14	21	5586	104,529	86	96	910	30	1
2	R2PCB	MTL. CNTR.													2
3															3
4															4
5															5
CHARGE, PROPELLING, MTL. CNTR., M18															
6	P20AB	MTL. CNTR.	31.2	26 3/8 x 8 1/2 x 8 1/2	3	12	16	13	2496	79,810	64	92	762	29	6
7	R2MCH	MTL. CNTR.	31	26 3/8 x 8 1/2 x 8 1/2	3	12	16	13	2496	79,251	64	92	762	29	7
8															8
9															9
10															10
CHARGE, PROPELLING, MTL. CNTR., M19															
11	P20BB	MTL. CNTR.	51.9	29 3/8 x 9 1/2 x 9 1/2	3	10	14	11	1540	82,147	74	91	876	31	11
12	P20BG	MTL. CNTR.	53.2	29 3/8 x 9 1/2 x 9 1/2	3	10	14	11	1540	84,149	74	91	876	31	12
13															13
14															14
CHARGE, PROPELLING, MTL. CNTR., M20															
15	P2KCA	MTL. CNTR.		57 1/2 x 8.4 x 8.4	3	12	6				141				15
16															16
17															17
18															18
4.5" ROCKET MTL. CNTR., T41 SERIES															
19	S9CKC	MTL. CNTR.	70	37 1/2 x 6 1/2 x 6 1/2	6	16	10	10	1600	113,892	115	54	745	29	19
20	S9CLM	MTL. CNTR.	70	37 1/2 x 6 1/2 x 6 1/2	6	16	10	10	1600	113,892	115	54	745	29	20
21	S9CUA	MTL. CNTR.	70	37 1/2 x 6 1/2 x 6 1/2	6	16	10	10	1600	113,892	115	54	745	29	21
22	S9NBM	MTL. CNTR.	81	37 1/2 x 6 1/2 x 6 1/2	6	16	10	9	1440	118,434	115	48	707	26	22
23	S9NFM	MTL. CNTR.	81	37 1/2 x 6 1/2 x 6 1/2	6	16	10	9	1440	118,434	115	48	707	26	23
24	S9NGM	MTL. CNTR.	81	37 1/2 x 6 1/2 x 6 1/2	6	16	10	9	1440	118,434	115	48	707	26	24
25	S9NDA	MTL. CNTR.	67	37 1/2 x 6 1/2 x 6 1/2	6	16	10	11	1760	119,759	115	60	723	31	25
26	S9NHM	MTL. CNTR.	70	37 1/2 x 6 1/2 x 6 1/2	6	16	10	11	1600	113,892	115	54	745	29	26
27															27
28															28
CARTRIDGE, 105 MM MTL. CNTR., M152 SERIES															
29	RAPBM	MTL. CNTR.	67	37 1/2 x 6 1/2 x 6 1/2	6	16	10	11	1760	119,861	115	60	764	31	29
30	RAPBT	MTL. CNTR.	67	37 1/2 x 6 1/2 x 6 1/2	6	16	10	11	1760	119,861	115	60	764	31	30
31	RAPDM	MTL. CNTR.	68.2	37 1/2 x 6 1/2 x 6 1/2	6	16	10	11	1760	121,973	115	60	764	31	31
32	RAPEM	MTL. CNTR.	68	37 1/2 x 6 1/2 x 6 1/2	6	16	10	11	1760	121,621	115	60	764	31	32
33	RAPPN	MTL. CNTR.	71	37 1/2 x 6 1/2 x 6 1/2	6	16	10	10	1600	115,492	115	54	745	29	33
34	RAPSN	MTL. CNTR.	71	37 1/2 x 6 1/2 x 6 1/2	6	16	10	10	1600	115,492	115	54	745	29	34
35	RAQIN	MTL. CNTR.	71	37 1/2 x 6 1/2 x 6 1/2	6	16	10	10	1600	115,492	115	54	745	29	35
36	RAQJN	MTL. CNTR.	71	37 1/2 x 6 1/2 x 6 1/2	6	16	10	10	1600	115,492	115	54	745	29	36
37	RAQLM	MTL. CNTR.	68	37 1/2 x 6 1/2 x 6 1/2	6	16	10	11	1760	121,621	115	60	764	31	37
38	RAQMM	MTL. CNTR.	71	37 1/2 x 6 1/2 x 6 1/2	6	16	10	10	1600	115,492	115	54	745	29	38
39	RAQNM	MTL. CNTR.	67	37 1/2 x 6 1/2 x 6 1/2	6	16	10	11	1760	119,861	115	60	764	31	39
40	RAQQM	MTL. CNTR.	71	37 1/2 x 6 1/2 x 6 1/2	6	16	10	10	1600	115,492	115	54	745	29	40
41	RAQRN	MTL. CNTR.	71	37 1/2 x 6 1/2 x 6 1/2	6	16	10	10	1600	115,492	115	54	745	29	41
42	RIQEN	MTL. CNTR.	66	37 1/2 x 6 1/2 x 6 1/2	6	16	10	11	1760	118,101	115	60	764	31	42
43	RIQFN	MTL. CNTR.	69	37 1/2 x 6 1/2 x 6 1/2	6	16	10	10	1600	112,292	115	54	745	29	43
44	RIQVN	MTL. CNTR.	69	37 1/2 x 6 1/2 x 6 1/2	6	16	10	10	1600	112,292	115	54	745	29	44
45	RIQSN	MTL. CNTR.	71	37 1/2 x 6 1/2 x 6 1/2	6	16	10	10	1600	115,492	115	54	745	29	45

TABULAR DATA 9'-2" x 40'-6" — 50 TON BOX CAR

L I N E	AIC SYMBOL	PACKING	PKG WT. LBS.	APPROX. DIM. OF PKG IN INCHES	PAGE FOR TYPICAL PLAN SECT, ETC	CNTRS WIDTH OF CAR	CNTRS LENGTH OF CAR	CNTRS HEIGHT OF CAR	TOTAL CNTRS	APPROX TOTAL WT INCL. MATL IN LBS.	APPROX. SPACE AT CENTER (INCHES)	HEIGHT OF CENTER GATE (INCHES)	MATERIAL LUMBER BOARD FEET	NAILS LBS.	L I N E
CHARGE, PROPELLING, MTL. CNTR., M17															
1	R2PBB	1/4 MTL. CNTR.	18.3	28 3/8 x 5 1/4 x 5 1/4	3	20	14	21	5880	110,073	86	96	972	39	1
2	R2PCB	3/4 MTL. CNTR.													2
3															3
4															4
5															5
CHARGE, PROPELLING, MTL. CNTR., M18															
6	P20AB	1/4 MTL. CNTR.	31.2	26 3/8 x 8 3/8 x 8 3/8	3	13	16	13	2704	86,383	64	92	796	28	6
7	R2MCH	1/4 MTL. CNTR.	31	26 3/8 x 8 3/8 x 8 3/8	3	13	16	13	2704	85,842	64	92	796	28	7
8															8
9															9
10															10
CHARGE, PROPELLING, MTL. CNTR., M19															
11	P20BB	1/4 MTL. CNTR.	51.9	29 3/8 x 9 1/2 x 9 1/2	3	11	14	11	1694	89,985	74	88	814	31	11
12	P20BG	1/4 MTL. CNTR.	53.2	29 3/8 x 9 1/2 x 9 1/2	3	11	14	11	1694	92,188	74	88	814	31	12
13															13
14															14
CHARGE, PROPELLING, MTL. CNTR., M20															
15	P2KCA	1/4 MTL. CNTR.		57 1/2 x 8.4 x 8.4	3	13	6								15
16															16
17															17
18															18
4.5" ROCKET, MTL. CNTR., T41 SERIES															
19	S9CKC	1/4 MTL. CNTR.	70	37 1/8 x 6 1/8 x 6 1/8	6	17	10	9	1530	108,974	115	48	737	31	19
20	S9CLM	1/4 MTL. CNTR.	70	37 1/8 x 6 1/8 x 6 1/8	6	17	10	9	1530	108,974	115	48	737	31	20
21	S9CUA	1/4 MTL. CNTR.	70	37 1/8 x 6 1/8 x 6 1/8	6	17	10	9	1530	108,974	115	48	737	31	21
22	S9NBM	1/4 MTL. CNTR.	81	37 1/8 x 6 1/8 x 6 1/8	6	17	10	8	1360	111,983	115	44	716	33	22
23	S9NFM	1/4 MTL. CNTR.	81	37 1/8 x 6 1/8 x 6 1/8	6	17	10	8	1360	111,983	115	44	716	33	23
24	S9NGM	1/4 MTL. CNTR.	81	37 1/8 x 6 1/8 x 6 1/8	6	17	10	8	1360	111,983	115	44	716	33	24
25	S9NDA	1/4 MTL. CNTR.	67	37 1/2 x 6 1/8 x 6 1/8	6	17	10	10	1700	115,857	115	54	770	32	25
26	S9NWM	1/4 MTL. CNTR.	70	37 1/8 x 6 1/8 x 6 1/8	6	17	10	9	1530	108,974	115	48	737	31	26
27															27
28															28
CARTRIDGE, 105MM MTL. CNTR., M152 SERIES															
29	RAPBM	1/4 MTL. CNTR.	67	37 1/8 x 6 1/8 x 6 1/8	6	17	10	10	1700	115,857	115	54	770	32	29
30	RAPBT	1/4 MTL. CNTR.	67	37 1/8 x 6 1/8 x 6 1/8	6	17	10	10	1700	115,857	115	54	770	32	30
31	RAPDM	1/4 MTL. CNTR.	68.2	37 1/8 x 6 1/8 x 6 1/8	6	17	10	10	1700	116,897	115	54	770	32	31
32	RAPDM	1/4 MTL. CNTR.	68	37 1/8 x 6 1/8 x 6 1/8	6	17	10	10	1700	116,557	115	54	770	32	32
33	RAPEM	1/4 MTL. CNTR.	68	37 1/8 x 6 1/8 x 6 1/8	6	17	10	10	1700	116,557	115	54	770	32	33
34	RAPPN	1/4 MTL. CNTR.	71	37 1/8 x 6 1/8 x 6 1/8	6	17	10	9	1530	110,504	115	48	737	31	34
35	RAPSN	1/4 MTL. CNTR.	71	37 1/8 x 6 1/8 x 6 1/8	6	17	10	9	1530	110,504	115	48	737	31	35
36	RAQIN	1/4 MTL. CNTR.	71	37 1/8 x 6 1/8 x 6 1/8	6	17	10	9	1530	110,504	115	48	737	31	36
37	RAQJN	1/4 MTL. CNTR.	71	37 1/8 x 6 1/8 x 6 1/8	6	17	10	10	1700	116,557	115	54	770	32	37
38	RAQLM	1/4 MTL. CNTR.	68	37 1/8 x 6 1/8 x 6 1/8	6	17	10	10	1700	116,557	115	54	770	32	38
39	RAQMT	1/4 MTL. CNTR.	71	37 1/8 x 6 1/8 x 6 1/8	6	17	10	9	1530	110,504	115	48	737	31	39
40	RAQNM	1/4 MTL. CNTR.	67	37 1/8 x 6 1/8 x 6 1/8	6	17	10	10	1700	114,857	115	54	770	32	40
41	RAQON	1/4 MTL. CNTR.	71	37 1/8 x 6 1/8 x 6 1/8	6	17	10	9	1530	110,504	115	48	737	31	41
42	RAQRM	1/4 MTL. CNTR.	71	37 1/8 x 6 1/8 x 6 1/8	6	17	10	9	1530	110,504	115	48	737	31	42
43	RIGEN	1/4 MTL. CNTR.	66	37 1/8 x 6 1/8 x 6 1/8	6	17	10	10	1700	113,157	115	54	770	32	43
44	RIQFN	1/4 MTL. CNTR.	69	37 1/8 x 6 1/8 x 6 1/8	6	17	10	10	1700	119,257	115	54	770	32	44
45	RIQNN	1/4 MTL. CNTR.	69	37 1/8 x 6 1/8 x 6 1/8	6	17	10	10	1700	119,257	115	54	770	32	45
46	RIQSN	1/4 MTL. CNTR.	71	37 1/8 x 6 1/8 x 6 1/8	6	17	10	9	1530	110,504	115	48	737	31	46

TABULAR DATA FOR 8'-6" x 40'-6" - 50 TON BOX CAR

L I N E	AIC SYMBOL	PACKING	PKG. WT. LBS.	APPROX. DIM. OF PKG IN INCHES	PAGE FOR TYPICAL PLAN SECT, ETC.	CNTRS WIDTH OF CAR	CNTRS LENGTH OF CAR	CNTRS HEIGHT OF CAR	TOTAL CNTRS	APPROX TOTAL WT. INCL. MATL. IN LBS.	APPROX. SPACE AT CENTER (INCHES)	HEIGHT OF CENTER GATE (INCHES)	MATERIALS		L I N E
													LUMBER BOARD FEET.	NAILS LBS	
CARTRIDGE 105 MM, MTL. CNTR. M152 SERIES (CONT.)															
1	RIQVM	MTL CNTR	71	37 1/8 x 6 1/8 x 6 1/8	6	16	10	10	1600	115,492	115	54	745	29	1
2	RIQWM	MTL CNTR	71	37 1/8 x 6 1/8 x 6 1/8	6	16	10	10	1600	115,492	115	54	745	29	2
3	RIUDN	MTL CNTR	67	37 1/8 x 6 1/8 x 6 1/8	6	16	10	11	1760	119,861	115	60	764	31	3
4	RIUWM	MTL CNTR	69	37 1/8 x 6 1/8 x 6 1/8	6	16	10	10	1600	112,292	115	54	745	29	4
5															5
6															6
7															7
8															8
9															9
10	CARTRIDGE 75MM, MTL CNTR, M154 SERIES														
11	RILNV	MTL CNTR	32.1	31 7/8 x 4 1/2 x 4 1/2	6	22	12	13	3432	112,047	104	52	741	26	11
12	RIRXM	MTL CNTR	29.9	31 7/8 x 4 1/2 x 4 1/2	6	22	12	15	3960	120,387	104	60	782	28	12
13	RIRXY	MTL CNTR	29.8	31 7/8 x 4 1/2 x 4 1/2	6	22	12	15	3960	119,991	104	60	782	28	13
14	RIRYM	MTL CNTR	31.2	31 7/8 x 4 1/2 x 4 1/2	6	22	12	14	3696	117,218	104	55	750	27	14
15	RIROM	MTL CNTR	31.2	31 7/8 x 4 1/2 x 4 1/2	6	22	12	14	3696	117,218	104	55	750	27	15
15A	RILGN	MTL CNTR	31	31 7/8 x 4 1/2 x 4 1/2	6	22	12	14	3696	116,479	104	55	750	27	15A
16	RILNM	MTL CNTR	32.3	31 7/8 x 4 1/2 x 4 1/2	6	22	12	13	3432	112,733	104	52	741	26	16
17	RIRIM	MTL CNTR	32.9	31 7/8 x 4 1/2 x 4 1/2	6	22	12	13	3432	114,792	104	52	741	26	17
18	RILFM	MTL CNTR	32.7	31 7/8 x 4 1/2 x 4 1/2	6	22	12	13	3432	114,105	104	52	741	26	18
19	RIRUM	MTL CNTR	31.4	31 7/8 x 4 1/2 x 4 1/2	6	22	12	14	3696	117,957	104	55	750	27	19
20	RIRMM	MTL CNTR	30.3	31 7/8 x 4 1/2 x 4 1/2	6	22	12	14	3696	113,891	104	55	750	27	20
21	RIRDM	MTL CNTR	29.7	31 7/8 x 4 1/2 x 4 1/2	6	22	12	15	3960	119,595	104	60	782	28	21
22	RIRUM	MTL CNTR	31.2	31 7/8 x 4 1/2 x 4 1/2	6	22	12	14	3696	117,218	104	55	750	27	22
23	RIRVM	MTL CNTR	31.2	31 7/8 x 4 1/2 x 4 1/2	6	22	12	14	3696	117,218	104	55	750	27	23
24															24
25															25
26															26
CARTRIDGE 90MM, MTL CNTR, M159 SERIES															
27	PSRAM	MTL CNTR	67.4	43 3/8 x 6 1/8 x 6 1/8	6	16	10	10	1600	109,090	52	54	492	20	27
28	PSRCM	MTL CNTR	67.3	43 3/8 x 6 1/8 x 6 1/8	6	16	10	10	1600	108,930	52	54	492	20	28
29	PSRXM	MTL CNTR	67.3	43 3/8 x 6 1/8 x 6 1/8	6	16	10	10	1600	108,930	52	54	492	20	29
30	PSREM	MTL CNTR	67.3	43 3/8 x 6 1/8 x 6 1/8	6	16	10	10	1600	108,930	52	54	492	20	30
31	PSRFM	MTL CNTR	68.6	43 3/8 x 6 1/8 x 6 1/8	6	16	10	10	1600	112,610	52	54	492	20	31
32	PSRLM	MTL CNTR	68	43 3/8 x 6 1/8 x 6 1/8	6	16	10	10	1600	110,050	52	54	492	20	32
33	PSSSM	MTL CNTR	69	43 3/8 x 6 1/8 x 6 1/8	6	16	10	10	1600	111,650	52	54	492	20	33
34	PSOON	MTL CNTR	67.4	43 3/8 x 6 1/8 x 6 1/8	6	16	10	10	1600	109,090	52	54	492	20	34
35	PSRPM	MTL CNTR	67.3	43 3/8 x 6 1/8 x 6 1/8	6	16	10	10	1600	108,930	52	54	492	20	35
36	PSRRM	MTL CNTR	67.3	43 3/8 x 6 1/8 x 6 1/8	6	16	10	10	1600	108,930	52	54	492	20	36
37	PSRTM	MTL CNTR	70	43 3/8 x 6 1/8 x 6 1/8	6	16	10	10	1600	113,250	52	54	492	20	37
38	PSRUM	MTL CNTR	70	43 3/8 x 6 1/8 x 6 1/8	6	16	10	10	1600	113,250	52	54	492	20	38
39	PSQXM	MTL CNTR	70	43 3/8 x 6 1/8 x 6 1/8	6	16	10	10	1600	113,250	52	54	492	20	39
40	PSSBM	MTL CNTR	67.4	43 3/8 x 6 1/8 x 6 1/8	6	16	10	10	1600	109,090	52	54	492	20	40
41	PSSCM	MTL CNTR	69	43 3/8 x 6 1/8 x 6 1/8	6	16	10	10	1600	111,650	52	54	492	20	41
42	PSRLU	MTL CNTR	68	43 3/8 x 6 1/8 x 6 1/8	6	16	10	10	1600	110,050	52	54	492	20	42
43	PSSLM	MTL CNTR	65.3	43 3/8 x 6 1/8 x 6 1/8	6	16	10	11	1760	116,244	52	60	518	21	43
44	PSSMM	MTL CNTR	69.6	43 3/8 x 6 1/8 x 6 1/8	6	16	10	10	1600	112,610	52	54	492	20	44
45	PSSMN	MTL CNTR	69.6	43 3/8 x 6 1/8 x 6 1/8	6	16	10	10	1600	112,610	52	54	492	20	45
46	PSSOM	MTL CNTR	67.4	43 3/8 x 6 1/8 x 6 1/8	6	16	10	10	1600	109,090	52	54	492	20	46
47	PSSUM	MTL CNTR	67.4	43 3/8 x 6 1/8 x 6 1/8	6	16	10	10	1600	109,090	52	54	492	20	47
48	PSQUM	MTL CNTR	67.4	43 3/8 x 6 1/8 x 6 1/8	6	16	10	10	1600	109,090	52	54	492	20	48

TABULAR DATA 9'-2" x 40'-6" - 50TON BOX CAR

LINE	AIC SYMBOL	PACKING	PKG WT. LBS.	APPROX DIM OF PKG IN INCHES	PAGE FOR TYPICAL PLAN SECT, ETC.	CNTRS WIDTH OF CAR	CNTRS LENGTH OF CAR	CNTRS HEIGHT OF CAR	TOTAL CNTRS	APPROX. TOTAL W.T. INCL. MATL. IN LBS.	APPROX. SPACE AT CENTER (INCHES)	HEIGHT OF CENTER GATE (INCHES)	MATERIALS		LINE
													LUMBER BOARD FEET	NAILS LBS.	
CARTRIDGE 105MM, MTL. CNTR., M152 SERIES (CONT.)															
1	RIDVM	1/2 MTL CNTR	71	37 1/8 x 6 1/8 x 6 1/8	6	17	10	9	1530	110,504	115	48	737	31	1
2	RIGWM	1/2 MTL CNTR	71	37 1/8 x 6 1/8 x 6 1/8	6	17	10	9	1530	110,504	115	48	737	31	2
3	RIDVM	1/2 TL CNTR	67	37 1/8 x 6 1/8 x 6 1/8	6	17	10	10	1700	115,857	115	54	770	32	3
4	RIDWM	1/2 TL CNTR	69	37 1/8 x 6 1/8 x 6 1/8	6	17	10	10	1700	119,257	115	54	770	32	4
5															5
6															6
7															7
8															8
9															9
10	CARTRIDGE 75MM, MTL CNTR, M154 SERIES														
11	RILVM	1/2 MTL CNTR	32.1	31 3/8 x 4 1/2 x 4 1/2	6	24	12	12	3456	112,706	104	48	678	27	11
12	RIRXM	1/2 MTL CNTR	29.9	31 3/8 x 4 1/2 x 4 1/2	6	24	12	13	3744	113,715	104	52	697	25	12
13	RIRXV	1/2 MTL CNTR	29.8	31 3/8 x 4 1/2 x 4 1/2	6	24	12	13	3744	113,340	104	52	697	25	13
14	RIRYM	1/2 MTL CNTR	31.2	31 3/8 x 4 1/2 x 4 1/2	6	24	12	13	3744	118,581	104	52	697	25	14
15	RIRYM	1/2 MTL CNTR	31.2	31 3/8 x 4 1/2 x 4 1/2	6	24	12	13	3744	118,581	104	52	697	25	15
15A	RIRVM	1/2 MTL CNTR	31.2	31 3/8 x 4 1/2 x 4 1/2	6	24	12	13	3744	117,832	104	52	697	25	15A
16	RILNM	1/2 MTL CNTR	32.3	31 3/8 x 4 1/2 x 4 1/2	6	24	12	12	3456	113,351	104	48	678	27	16
17	RIRIM	1/2 MTL CNTR	32.9	31 3/8 x 4 1/2 x 4 1/2	6	24	12	12	3456	115,425	104	48	678	27	17
18	RILFM	1/2 MTL CNTR	32.7	31 3/8 x 4 1/2 x 4 1/2	6	24	12	12	3456	114,734	104	48	678	27	18
19	RIRJM	1/2 MTL CNTR	31.4	31 3/8 x 4 1/2 x 4 1/2	6	24	12	13	3744	119,330	104	52	697	25	19
20	RIRMM	1/2 MTL CNTR	30.3	31 3/8 x 4 1/2 x 4 1/2	6	24	12	13	3744	115,211	104	52	697	25	20
21	RIRDM	1/2 MTL CNTR	29.7	31 3/8 x 4 1/2 x 4 1/2	6	24	12	13	3744	112,965	104	52	697	25	21
22	RIRUM	1/2 MTL CNTR	31.2	31 3/8 x 4 1/2 x 4 1/2	6	24	12	13	3744	118,581	104	52	697	25	22
23	RIRVM	1/2 MTL CNTR	31.2	31 3/8 x 4 1/2 x 4 1/2	6	24	12	13	3744	118,581	104	52	697	25	23
24															24
25															25
26															26
CARTRIDGE 90MM., MTL. CNTR., M159 SERIES															
27	PSRAM	1/2 MTL CNTR	67.4	43 3/8 x 6 1/8 x 6 1/8	6	17	10	10	1700	116,088	52	54	554	23	27
28	PSRCM	1/2 MTL CNTR	67.3	43 3/8 x 6 1/8 x 6 1/8	6	17	10	10	1700	115,918	52	54	554	23	28
29	PSRXM	1/2 MTL CNTR	67.3	43 3/8 x 6 1/8 x 6 1/8	6	17	10	10	1700	115,918	52	54	554	23	29
30	PSREM	1/2 MTL CNTR	67.3	43 3/8 x 6 1/8 x 6 1/8	6	17	10	10	1700	115,918	52	54	554	23	30
31	PSRFM	1/2 MTL CNTR	69.6	43 3/8 x 6 1/8 x 6 1/8	6	17	10	10	1700	119,828	52	54	554	23	31
32	PSRLM	1/2 MTL CNTR	68	43 3/8 x 6 1/8 x 6 1/8	6	17	10	10	1700	117,108	52	54	554	23	32
33	PSSSM	1/2 MTL CNTR	69	43 3/8 x 6 1/8 x 6 1/8	6	17	10	10	1700	118,808	52	54	554	23	33
34	PSOVM	1/2 MTL CNTR	67.4	43 3/8 x 6 1/8 x 6 1/8	6	17	10	10	1700	116,088	52	54	554	23	34
35	PSRPM	1/2 MTL CNTR	67.3	43 3/8 x 6 1/8 x 6 1/8	6	17	10	10	1700	115,918	52	54	554	23	35
36	PSRRM	1/2 MTL CNTR	67.3	43 3/8 x 6 1/8 x 6 1/8	6	17	10	10	1700	115,918	52	54	554	23	36
37	PSRTM	1/2 MTL CNTR	70	43 3/8 x 6 1/8 x 6 1/8	6	17	10	9	1530	108,442	52	48	528	22	37
38	PSRUM	1/2 MTL CNTR	70	43 3/8 x 6 1/8 x 6 1/8	6	17	10	9	1530	108,442	52	48	528	22	38
39	PSQXM	1/2 MTL CNTR	70	43 3/8 x 6 1/8 x 6 1/8	6	17	10	9	1530	108,442	52	48	528	22	39
40	PSSBM	1/2 MTL CNTR	67.4	43 3/8 x 6 1/8 x 6 1/8	6	17	10	10	1700	116,088	52	54	554	23	40
41	PSSCM	1/2 MTL CNTR	69	43 3/8 x 6 1/8 x 6 1/8	6	17	10	10	1700	118,808	52	54	554	23	41
42	PSRLU	1/2 MTL CNTR	68	43 3/8 x 6 1/8 x 6 1/8	6	17	10	10	1700	117,108	52	54	554	23	42
43	PSSLM	1/2 MTL CNTR	65.3	43 3/8 x 6 1/8 x 6 1/8	6	17	10	10	1700	112,518	52	54	554	23	43
44	PSSMM	1/2 MTL CNTR	69.6	43 3/8 x 6 1/8 x 6 1/8	6	17	10	10	1700	119,828	52	54	554	23	44
45	PSSMN	1/2 MTL CNTR	69.6	43 3/8 x 6 1/8 x 6 1/8	6	17	10	10	1700	119,828	52	54	554	23	45
46	PSSOM	1/2 MTL CNTR	67.4	43 3/8 x 6 1/8 x 6 1/8	6	17	10	10	1700	116,088	52	54	554	23	46
47	PSSUM	1/2 MTL CNTR	67.4	43 3/8 x 6 1/8 x 6 1/8	6	17	10	10	1700	116,088	52	54	554	23	47
48	PSQUM	1/2 MTL CNTR	67.4	43 3/8 x 6 1/8 x 6 1/8	6	17	10	10	1700	116,088	52	54	554	23	48

TABULAR DATA FOR 8'-6" x 40'-6" - 50 TON BOX CAR

L I N E	AIG SYMBOL	PACKING	PKG WT LBS	APPROX DIM. OF PKG. IN INCHES	PAGE FOR TYPICAL PLAN SECT, ETC	CNTRS WIDTH OF CAR	CNTRS LENGTH OF CAR	CNTRS HEIGHT OF CAR	TOTAL CNTRS	APPROX TOTAL WT. INCL. MATL IN LBS	APPROX SPACE AT CENTER (INCHES)	HEIGHT OF CENTER GATE (INCHES)	MATERIALS		L I N E
													LUMBER BOARD FEET	NAILS LBS	
CARTRIDGE 90MM, MTL CNTR, M159 SERIES (CONT)															
1	PSOIM	1/MTL CNTR	673	43 3/8 x 6 3/8 x 6 3/8	6	16	10	10	1600	108,930	52	54	492	20	1
2															2
3															3
CARTRIDGE 57 MM GUN, MTL CNTR M175 & M194															
4	RIIBM	1/MTL CNTR	25.2	31 1/8 x 4 1/2 x 4 1/2	6	22	12	17	4488	115,268	112	66	856	30	4
5	RIIBV	1/MTL CNTR	25.2	31 1/8 x 4 1/2 x 4 1/2	6	22	12	17	4488	115,268	112	66	856	30	5
6	RIIEM	1/MTL CNTR	24	31 1/8 x 4 1/2 x 4 1/2	6	22	12	18	4752	116,259	112	70	872	31	6
7	RIIHM	1/MTL CNTR	24	31 1/8 x 4 1/2 x 4 1/2	6	22	12	18	4752	116,259	112	70	872	31	7
8	RIIIM	1/MTL CNTR	24	31 1/8 x 4 1/2 x 4 1/2	6	22	12	18	4752	116,259	112	70	872	31	8
9	RIIUM	1/MTL CNTR	24	31 1/8 x 4 1/2 x 4 1/2	6	22	12	18	4752	116,259	112	70	872	31	9
10	RIILM	1/MTL CNTR	24	31 1/8 x 4 1/2 x 4 1/2	6	22	12	18	4752	116,259	112	70	872	31	10
11	RIIMM	1/MTL CNTR	24	31 1/8 x 4 1/2 x 4 1/2	6	22	12	18	4752	116,259	112	70	872	31	11
12															12
13															13
14															14
CARTRIDGE 75 MM HOW & GUN - 81 MM MORTAR, MTL CNTRS, MIT3 SERIES															
15	RAHQN	1/MTL CNTR	28	29 1/4 x 5 x 5	6	20	14	15	4200	119,173	76	64	620	23	15
16	RAFJM	1/MTL CNTR	28.8	29 1/4 x 5 x 5	6	20	14	14	3920	114,406	76	60	595	22	16
17	RAFLM	1/MTL CNTR	28.8	29 1/4 x 5 x 5	6	20	14	14	3920	114,406	76	60	595	22	17
18	RAFPM	1/MTL CNTR	28.8	29 1/4 x 5 x 5	6	20	14	14	3920	114,406	76	60	595	22	18
19	RAHOM	1/MTL CNTR	30	28 7/8 x 5 x 5	6	20	14	14	3920	119,147	82	60	610	22	19
20	RAJBN	1/MTL CNTR	28	29 1/4 x 5 x 5	6	20	14	15	4200	119,173	76	64	620	23	20
21	RAFTM	1/MTL CNTR	32	29 1/4 x 5 x 5	6	20	14	13	3640	117,950	76	56	579	22	21
22	RAFWM	1/MTL CNTR	30	29 1/4 x 5 x 5	6	20	14	14	3920	119,110	76	60	595	22	22
23	RAFYM	1/MTL CNTR	28.8	29 1/4 x 5 x 5	6	20	14	14	3920	114,406	76	60	595	22	23
24	RAHFM	1/MTL CNTR	30	29 1/4 x 5 x 5	6	20	14	14	3920	119,110	76	60	595	22	24
25	RAHIM	1/MTL CNTR	28.8	29 1/4 x 5 x 5	6	20	14	14	3920	114,406	76	60	595	22	25
26	RAHJM	1/MTL CNTR	28.8	29 1/4 x 5 x 5	6	20	14	14	3920	114,406	76	60	595	22	26
27	RAJCN	1/MTL CNTR	30	29 1/4 x 5 x 5	6	20	14	14	3920	119,110	76	60	595	22	27
28	RAHVN	1/MTL CNTR	30	29 1/4 x 5 x 5	6	20	14	14	3920	119,110	76	60	595	22	28
29	RAHMM	1/MTL CNTR	28	29 1/4 x 5 x 5	6	20	14	15	4200	119,173	76	64	620	23	29
30	RAHNM	1/MTL CNTR	30	29 1/4 x 5 x 5	6	20	14	14	3920	119,110	76	60	595	22	30
31	RAJAN	1/MTL CNTR	29	29 1/4 x 5 x 5	6	20	14	14	3920	115,190	76	60	595	22	31
32															32
33															33
34															34
35	RIMDN	1/MTL CNTR	32.8	29 1/4 x 5 x 5	6	20	14	12	3360	111,634	76	52	562	21	35
36	RIMIN	1/MTL CNTR	36.6	29 1/4 x 5 x 5	6	20	14	11	3080	114,111	76	48	545	20	36
37	RIMMN	1/MTL CNTR	33	29 1/4 x 5 x 5	6	20	14	12	3360	112,306	76	52	562	21	37
38	RIMNN	1/MTL CNTR	33.7	29 1/4 x 5 x 5	6	20	14	12	3360	114,658	76	52	562	21	38
39	RIMSN	1/MTL CNTR	34.5	29 1/4 x 5 x 5	6	20	14	12	3360	117,346	76	52	562	21	39
40	RIMVN	1/MTL CNTR	33.3	29 1/4 x 5 x 5	6	20	14	12	3360	113,314	76	52	562	21	40
41	RIRSM	1/MTL CNTR		29 1/4 x 5 x 5	6	20	14				76				41
42	RIVDM	1/MTL CNTR	30.5	29 1/4 x 5 x 5	6	20	14	13	3640	112,490	76	56	579	22	42
43	RIVGM	1/MTL CNTR	36	29 1/4 x 5 x 5	6	20	14	11	3080	112,263	76	48	545	20	43
44	RIVHM	1/MTL CNTR	33.7	29 1/4 x 5 x 5	6	20	14	12	3360	114,658	76	52	562	21	44
45	RIVIM	1/MTL CNTR	36	29 1/4 x 5 x 5	6	20	14	11	3080	112,263	76	48	545	20	45
46	RIVKM	1/MTL CNTR	36	29 1/4 x 5 x 5	6	20	14	11	3080	112,263	76	48	545	20	46
47	RIVLN	1/MTL CNTR	33.7	29 1/4 x 5 x 5	6	20	14	12	3360	114,658	76	52	562	21	47
48															48

TABULAR DATA FOR 9'-2" x 40'-6" - 50 TON BOX CAR

L / N E	AIC SYMBOL	PACKING	PKG WT. LBS.	APPROX DIM OF PKG IN INCHES	PAGE FOR TYPICAL PLAN SECT, ETC	CNTRS WIDTH OF CAR	CNTRS LENGTH OF CAR	CNTRS HEIGHT OF CAR	TOTAL CNTRS	APPROX TOTAL WT INCL. MATL IN LBS.	APPROX SPACE AT CENTER (INCHES)	HEIGHT OF CENTER GATE (INCHES)	MATERIALS LUMBER BOARD FEET	NAILS LBS	L / N E	
CARTRIDGE 90MM, MTL. CNTR, M159 SERIES (CONT)																
1	PS10M	1/MTL CNTR	67.3	43 3/8 x 6 1/8 x 6 1/8	6	17	10	10	1700	115,918	52	54	554	23	1	
2															2	
3															3	
57MM GUN, MTL. CNTR, M175 & M194																
4	R118M	1/MTL CNTR	25.2	31 1/8 x 4 1/2 x 4 1/2	6	24	12	16	4608	118,100	112	64	780	28	4	
5	R118Y	1/MTL CNTR	25.2	31 1/8 x 4 1/2 x 4 1/2	6	24	12	16	4608	118,100	112	64	780	28	5	
6	R118E	1/MTL CNTR	24	31 1/8 x 4 1/2 x 4 1/2	6	24	12	17	4896	119,515	112	66	793	28	6	
7	R118H	1/MTL CNTR	24	31 1/8 x 4 1/2 x 4 1/2	6	24	12	17	4896	119,515	112	66	793	28	7	
8	R118I	1/MTL CNTR	24	31 1/8 x 4 1/2 x 4 1/2	6	24	12	17	4896	119,515	112	66	793	28	8	
9	R118J	1/MTL CNTR	24	31 1/8 x 4 1/2 x 4 1/2	6	24	12	17	4896	119,515	112	66	793	28	9	
10	R118K	1/MTL CNTR	24	31 1/8 x 4 1/2 x 4 1/2	6	24	12	17	4896	119,515	112	66	793	28	10	
11	R118L	1/MTL CNTR	24	31 1/8 x 4 1/2 x 4 1/2	6	24	12	17	4896	119,515	112	66	793	28	11	
12															12	
13															13	
14															14	
CARTRIDGE 155MM HOW. & GUN - 81MM MORTAR, MTL. CNTRS., M173 SERIES																
15	R4HQN	1/MTL CNTR	28	29 1/2 x 5 x 5	6	21 1/2	22	14	7 @ 22 7 @ 21	4214	119,585	76	56	597	23	15
16	R4FJM	1/MTL CNTR	28.8	29 1/2 x 5 x 5	6	21 1/2	22	14	7 @ 22 6 @ 21	3920	114,412	76	56	597	23	16
17	R4FLM	1/MTL CNTR	28.8	29 1/2 x 5 x 5	6	21 1/2	22	14	7 @ 22 6 @ 21	3920	114,412	76	56	597	23	17
18	R4FPM	1/MTL CNTR	28.8	29 1/2 x 5 x 5	6	21 1/2	22	14	7 @ 22 6 @ 21	3920	114,412	76	56	597	23	18
19	R4HOM	1/MTL CNTR	30	28 7/8 x 5 x 5	6	21 1/2	22	14	7 @ 22 6 @ 21	3920	119,116	82	56	597	23	19
20	R4JBM	1/MTL CNTR	28	29 1/2 x 5 x 5	6	21 1/2	22	14	7 @ 22 7 @ 21	4214	119,585	76	60	628	23	20
21	R4FTM	1/MTL CNTR	32	29 1/2 x 5 x 5	6	21 1/2	22	14	6 @ 22 6 @ 21	3612	117,054	76	52	579	22	21
22	R4FWM	1/MTL CNTR	30	29 1/2 x 5 x 5	6	21 1/2	22	14	7 @ 22 6 @ 21	3920	119,116	76	56	597	23	22
23	R4FYM	1/MTL CNTR	28.8	29 1/2 x 5 x 5	6	21 1/2	22	14	7 @ 22 6 @ 21	3920	114,412	76	56	597	23	23
24	R4HHM	1/MTL CNTR	30	29 1/2 x 5 x 5	6	21 1/2	22	14	7 @ 22 6 @ 21	3920	119,116	76	56	597	23	24
25	R4HIM	1/MTL CNTR	28.8	29 1/2 x 5 x 5	6	21 1/2	22	14	7 @ 22 6 @ 21	3920	114,412	76	56	597	23	25
26	R4HJM	1/MTL CNTR	28.8	29 1/2 x 5 x 5	6	21 1/2	22	14	7 @ 22 6 @ 21	3920	114,412	76	56	597	23	26
27	R4JGN	1/MTL CNTR	30	29 1/2 x 5 x 5	6	21 1/2	22	14	7 @ 22 6 @ 21	3920	119,116	76	56	597	23	27
28	R4HVN	1/MTL CNTR	30	29 1/2 x 5 x 5	6	21 1/2	22	14	7 @ 22 6 @ 21	3920	119,116	76	56	597	23	28
29	R4HVM	1/MTL CNTR	28	29 1/2 x 5 x 5	6	21 1/2	22	14	7 @ 22 7 @ 21	4214	119,508	76	56	597	23	29
30	R4HNM	1/MTL CNTR	30	29 1/2 x 5 x 5	6	21 1/2	22	14	7 @ 22 6 @ 21	3920	119,116	76	56	597	23	30
31	R4JAN	1/MTL CNTR	29	29 1/2 x 5 x 5	6	21 1/2	22	14	7 @ 22 6 @ 21	3920	115,196	76	56	597	23	31
32															32	
33															33	
34															34	
35	R1MDN	1/MTL CNTR	32.8	29 1/2 x 5 x 5	6	21 1/2	22	14	6 @ 22 5 @ 21	3318	110,342	76	48	596	21	35
36	R1MIN	1/MTL CNTR	36.6	29 1/2 x 5 x 5	6	21 1/2	22	14	5 @ 22 5 @ 21	3010	111,548	76	44	543	22	36
37	R1MMN	1/MTL CNTR	33	29 1/2 x 5 x 5	6	21 1/2	22	14	6 @ 22 5 @ 21	3318	111,005	76	48	596	21	37
38	R1MNN	1/MTL CNTR	33.7	29 1/2 x 5 x 5	6	21 1/2	22	14	6 @ 22 5 @ 21	3318	113,328	76	48	596	21	38
39	R1MSN	1/MTL CNTR	34.5	29 1/2 x 5 x 5	6	21 1/2	22	14	6 @ 22 5 @ 21	3318	115,982	76	48	596	21	39
40	R1MVN	1/MTL CNTR	33.3	29 1/2 x 5 x 5	6	21 1/2	22	14	6 @ 22 5 @ 21	3318	112,001	76	48	596	21	40
41	R1RSM	1/MTL CNTR		29 1/2 x 5 x 5	6	21 1/2	22	14							41	
42	R1RSM	1/MTL CNTR		29 1/2 x 5 x 5	6	21 1/2	22	14	6 @ 22 5 @ 21	3612	111,681	76	52	597	22	42
43	R1RSM	1/MTL CNTR		29 1/2 x 5 x 5	6	21 1/2	22	14	5 @ 22 5 @ 21	3010	109,741	76	44	543	23	43
44	R1RSM	1/MTL CNTR		29 1/2 x 5 x 5	6	21 1/2	22	14	6 @ 22 5 @ 21	3318	113,328	76	48	596	21	44
45	R1RSM	1/MTL CNTR		29 1/2 x 5 x 5	6	21 1/2	22	14	5 @ 22 5 @ 21	3010	109,741	76	44	543	23	45
46	R1RSM	1/MTL CNTR		29 1/2 x 5 x 5	6	21 1/2	22	14	5 @ 22 5 @ 21	3010	109,741	76	44	543	23	46
47	R1RSM	1/MTL CNTR		29 1/2 x 5 x 5	6	21 1/2	22	14	5 @ 22 5 @ 21	3010	109,741	76	44	543	23	47

TABULAR DATA FOR 8'-6" x 40'-6" 50 TON BOX CAR (EXCEPT LINES 6 & 8*)

LINE	AIC SYMBOL	PACKING	PKG WT LBS	APPROX DIM. OF PKG IN INCHES	PAGE FOR TYPICAL PLAN SECT, ETC.	CNTRS WIDTH OF CAR	CNTRS LENGTH OF CAR	CNTRS HEIGHT OF CAR	TOTAL CNTRS	APPROX TOTAL WT WCL. MATL IN LBS.	APPROX SPACE AT CENTER (INCHES)	HEIGHT OF CENTER GATE (INCHES)	MATERIALS		LINE
													LUMBER BOARD FEET	NAILS LBS.	
BLACK POWDER, 25 LB. MTL. DRUM (SEE NOTE 2, PAGE 2)															
1		25 LBS/DRUM	28	14 X 9 1/2 X 9 1/2	7	10 @ 11	33	17 @ 5 8/10	3812	107,639	24	90	356	13	1
2								16 @ 5 8/10							2
3															3
4															4
5															5
* CHARGE, PROPELLING, 75 MM HOW. IN MTL DRUM															
6		32/MTL DRUM	26.15	30 13/16 X 15 1/8 X 15 1/8	5	7 @ 15 1/2	31 @ 15 1/2	3 @ 30 13/16	651	85,796	17	30 (EA)	1459	24	6
7															7
* CHARGE, PROPELLING, 105 MM HOW. IN MTL DRUM															
8		32/MTL DRUM	26.15	30 13/16 X 15 1/8 X 15 1/8	5	7 @ 15 1/2	31 @ 15 1/2	3 @ 30 13/16	651	85,796	17	30 (EA)	1459	24	8
9															9
CHARGE PROPELLING, 280 MM GUN, MTL CNTR, M399 (764) & M350															
10	P2TBA	1 CHG/CNTR	22.2	84 X 12 1/8 X 12 1/8	12	8	43	1	360	80,632	30	84	423	14	10
11	P2TBA	1 CHG/CNTR	200	80 X 11 1/8 X 11 1/8	12	9	46	1	392	79,705	32	80	516	15	11
POWDER, PROPELLENT, M17 WOODEN BOX (SMALL MOUTH)															
12			135	16 3/8 X 16 3/8 X 23 3/8	9	6 @ 16 3/8	29 @ 16 3/8	4 @ 23 3/8	696	97,960	11	94	1584	30	12
13															13
POWDER, PROPELLENT, BOX, STEEL M2 (OR MKVII)															
14			150	16 1/2 X 9 5/8 X 28 3/8	10	10 @ 9 5/8	29 @ 16 1/2	2 @ 28 3/8	580	89,544	18	28 3/8 (EA)	1006	29	14
15															15
POWDER, PROPELLENT, MTL, LND, WDN. BOX															
16			199	17 3/8 X 14 3/8 X 30	8	4 @ 17 3/8 2 @ 14 3/8	31 @ 14 3/8 26 @ 17 3/8	3 @ 30	528	106,196	28 @ 29	90	443	16	16
17															17
POWDER, PROPELLENT, IN WDN BOX															
18			51	17 1/8 X 14 1/8 X 12 1/8	11	4 @ 17 1/8 2 @ 14 1/8	31 @ 14 1/8 26 @ 17 1/8	7 @ 12 1/8	1232	65,741	26 @ 22	89	1155	21	18
19															19
POWDER, PROPELLENT, (ALT WDN BOX)															
20			132	17 1/8 X 14 1/8 X 21 1/8	11	4 @ 17 1/8 2 @ 14 1/8	31 @ 14 1/8 26 @ 17 1/8	4 @ 21 1/8	704	95,458	26 @ 22	88	1005	17	20
21															21
POWDER, PROPELLENT, IN WDN. BOX, M24															
22			199	17 3/8 X 14 3/8 X 29 3/8	8	4 @ 17 3/8 2 @ 14 3/8	31 @ 14 3/8 26 @ 17 3/8	3 @ 29 3/8	528	106,338	26 @ 22	90	500	16	22
23															23

* DATA SHOWN IS FOR 9'-0" CAR WIDTH

④ SEE NOTE 5, PAGE 2

TABULAR DATA FOR 9'-2" x 40'-6" — 50 TON BOX CAR

L I N E	A/C SYMBOL	PACKING	PKG WT. LBS.	APPROX. DIM. OF PKG IN INCHES	PAGE FOR TYPICAL PLAN SECT. ETC	CNTRS WIDTH OF CAR	CNTRS. LENGTH OF CAR	CNTRS HEIGHT OF CAR	TOTAL CNTRS	APPROX. TOTAL WT. INCL. MATL IN LBS.	APPROX. SPACE AT CENTER (INCHES)	HEIGHT OF CENTER GATE (INCHES)	MATERIALS		L I N E
													LUMBER BOARD FEET	NAILS LBS.	
BLACK POWDER, 25 LB. MTL DRUM (SEE NOTE 2, PAGE 2)															
1		25 LBS/DRUM	28	14 x 9 1/2 x 9 1/2	7	11	33	11	3993	114,196	24	84	950	17	1
2															2
3															3
4															4
5															5
CHARGE, PROPELLING, 75MM HOW. IN MTL. DRUM															
6		32/MTL DRUM	26.15	30 13/16 x 15 1/8 x 15 1/8	5	7 @ 15 1/8	31 @ 15 1/8	3 @ 30 13/16	651	86,093	15	30 (EA)	1577	26	6
7															7
CHARGE, PROPELLING, 105MM HOW. IN MTL. DRUM															
8		32/MTL DRUM	126.15	30 13/16 x 15 1/8 x 15 1/8	5	7 @ 15 1/8	31 @ 15 1/8	3 @ 30 13/16	651	86,093	15	30 (EA)	1577	26	8
9															9
CHARGE, PROPELLING, 280MM GUN, MTL. CNTR. M349 (T6A) & M350															
10	P2TBA	1 CHG/CNTR	221	84 x 12 1/2 x 12 1/2	12	8 @ 9	22 @ 8	1	383	86,153	30 3/4	84	597	17	10
11	P2TRB	1 CHG/CNTR	200	84 x 12 1/2 x 12 1/2	12	8 @ 9	22 @ 8	1	383	74,582	30 3/4	84	597	17	11
POWDER, PROPELLENT, M17 WOODEN BOX (SMALL MOUTH)															
12			135	16 3/8 x 16 3/8 x 23 3/8	9	6 @ 16 3/8	29 @ 16 3/8	4 @ 23 3/8	696	93,960 (USE 8'-6" CAR WHENEVER POSSIBLE)					12
13															13
POWDER, PROPELLENT, BOX STEEL, M2 @ OR MKVII															
14			150	16 1/2 x 9 5/8 x 23 3/8	10	11 @ 9 5/8	29 @ 16 1/2	2 @ 23 3/8	638	98,124	18	28 3/4 (EA)	959	26	14
15															15
POWDER, PROPELLENT, MTL LND WDN BOX, M24															
16			199	17 1/2 x 14 1/2 x 30	8	6 @ 17 1/2	31 @ 14 1/2	3 @ 30	558	112,467	28	90	559	27	16
17															17
POWDER, PROPELLENT IN WDN BOX															
18			51	17 1/2 x 14 1/2 x 12 1/2	11	6 @ 17 1/2	31 @ 14 1/2	7 @ 12 1/2	1302	70,717	26	89	1715	27	18
19															19
POWDER, PROPELLENT (ALT. WDN BOX)															
20			132	17 1/2 x 14 1/2 x 21 7/8	11	6 @ 17 1/2	31 @ 14 1/2	4 @ 21 7/8	744	102,142	26	88	1565	21	20
21															21
POWDER, PROPELLENT, IN WOODEN BOX, M24															
22			199	17 1/2 x 14 1/2 x 29 7/8	8	6 @ 17 1/2	31 @ 14 1/2	3 @ 29 7/8	558	112,457	26	90	559	17	22
23															23

A/C SYMBOL	FEDERAL STOCK NUMBER & DOD IDENTIFICATION CODE	PAGE IN DRAWING	LINE ON PAGE	A/C SYMBOL	FEDERAL STOCK NUMBER & DOD IDENTIFICATION CODE	PAGE IN DRAWING	LINE ON PAGE
CHARGE, PROPELLING, MTL CNTR, MK1				105 MM, MTL CNTR, M152 SERIES (CONT.)			
P2FCB		13 & 14	1	RAQIN	1315-028-C456	15 & 16	35
R2MAB		" "	2	RAQJN	" " -4863-C451	" "	36
R2MBC		" "	3	RAQLM	" " -1785-C455	" "	37
CHARGE, PROPELLING, MTL CNTR, M9 (M9A1)				75 MM GUN, MTL CNTR, M154 SERIES			
P2KBA	1320-028-4373-D655	13 & 14	7	RAQMM	" " -4812-C454	" "	38
P2JBA		" "	8	RAQNM	" " -4810-C445	" "	39
CHARGE, PROPELLING, MTL CNTR, M9E1				75 MM GUN, MTL CNTR, M154 SERIES			
P2TAA	1320-028-4380-D716	13 & 14	12	RAQOM	" " -4802-C444	" "	40
CHARGE, PROPELLING, MTL CNTR, M10 SERIES				75 MM GUN, MTL CNTR, M154 SERIES			
P2KAA	1320-028-4372-D655	13 & 14	16	RIQEN	" " -4800-C444	" "	41
P20BF	" " -4377-D676	" "	17	RIQFN	" " -4780-C446	" "	42
P2SAA	" " -4379-D700	" "	18	RIQNN	" " -4782-C445	" "	43
P2SAB	1320-096-3051-D700	" "	19	RIQSN	" " -4777-C444	" "	44
CHARGE, PROPELLING, MTL CNTR, M12				75 MM GUN, MTL CNTR, M154 SERIES			
R2PAB		13 & 14	22	RIQVM	" " -4778-C444	17 & 18	1
CHARGE, PROPELLING, MTL CNTR, M13 & M13A1				75 MM GUN, MTL CNTR, M154 SERIES			
R2MCB		13 & 14	26	RIQWM	" " -4779-C443	" "	2
R2MBD		" "	27	RIUDN	" " -4787-C445	" "	3
R2MCG		" "	28	RIUWM	" " -4798-C454	" "	4
CHARGE, PROPELLING, MTL CNTR, M14				75 MM GUN, MTL CNTR, M154 SERIES			
R2MAD	1320-028-4876-D540	13 & 14	31	RILNV	1315-028-4646-C075	17 & 18	11
R2MAH	" " -4873-D540	" "	32	RIRXM	" " -4637-C079	" "	12
CHARGE, PROPELLING, MTL CNTR, M15				75 MM GUN, MTL CNTR, M154 SERIES			
P2FCD		13 & 14	35	RIRXV	" " -4634-C079	" "	13
CHARGE, PROPELLING, MTL CNTR, M16				75 MM GUN, MTL CNTR, M154 SERIES			
P2EAB	1320-028-4369-D480	13 & 14	39	RIRYM	" " -4639-C079	" "	14
P2EAG	" " -4371-D480	" "	40	RIROM	" " -4606-C079	" "	15
CHARGE, PROPELLING, MTL CNTR, M17				75 MM GUN, MTL CNTR, M154 SERIES			
R2PBB		15 & 16	1	RILGN	" " -4601-C078	" "	15A
R2PCB		" "	2	RILNM	" " -4645-C075	" "	16
CHARGE, PROPELLING, MTL CNTR, M18 & M18A1				75 MM GUN, MTL CNTR, M154 SERIES			
P20AB	1320-028-4374-D675	15 & 16	6	RIRIM	" " -4647-C075	" "	17
R2MCH	" " -4880-D541	" "	7	RILFM	" " -4641-C078	" "	18
CHARGE, PROPELLING, MTL CNTR, M19				75 MM GUN, MTL CNTR, M154 SERIES			
P20BB	1320-028-4375-D676	15 & 16	11	RIRJM	" " -4644-C080	" "	19
P20BG	" " -4378-D676	" "	12	RIRMM	" " -4642-C079	" "	20
CHARGE, PROPELLING, MTL CNTR, M20				75 MM GUN, MTL CNTR, M154 SERIES			
P2KCA		15 & 16	15	RIRDM	" " -4643-C085	" "	21
4.5" ROCKET, MTL CNTR, T41 SERIES				90 MM, MTL CNTR, M159 SERIES			
S9CKC	1340-028-6096-H628	15 & 16	19	RIRUM	" " -4630-C079	" "	22
S9CLM	" " -6099-H629	" "	20	PSRAM	1315-028-4416-C266	17 & 18	27
S9CUA		" "	21	PSRCM	" " -4461-C266	" "	28
S9NBM		" "	22	PSRXM	" " -4465-C265	" "	29
S9NFM		" "	23	PSREM	" " -4451-C265	" "	30
S9NGM	1340-028-6101-H628	15 & 16	24	PSRFM	" " -4452-C260	" "	31
S9NDA		" "	25	PSRLM	" " -4460-C267	" "	32
S9NHM	1340-028-6103-H628	" "	26	PSSSM	" " -4463-C260	" "	33
105 MM, MTL CNTR, M152 SERIES				90 MM, MTL CNTR, M159 SERIES			
RAPBM	1315-028-4842-C444	15 & 16	29	PSOAN	" " -4414-C266	" "	34
RAPBT	" " -4844-C444	" "	30	PSRPM	" " -4474-C266	" "	35
RAPDM	" " -4847-C453	" "	31	PSRRM	" " -4479-C266	" "	36
RAPEM	" " -4849-C455	" "	32	PSRTM	" " -4469-C265	" "	37
RAPPN	" " -3062-C453	" "	33	PSRUM	" " -4454-C266	" "	38
RAPSN	" " -4837-C452	" "	34	PSQXM	" " -4448-C265	" "	39
75 MM & 81MM, MTL CNTR, M173 SERIES				57 MM, MTL CNTR, M175 & M194			
				RIIBM		19 & 20	4
				RIIBV		" "	5
				RIIEM		" "	6
				RIIHM		" "	7
				RIIIM	1310-308-5578-B580	" "	8
				RIIJM	" " -5579-B580	" "	9
				RIILM		" "	10
				RIIMM	1310-308-5581-B580	" "	11

AIC SYMBOL	FEDERAL STOCK NUMBER # DOD IDENTIFICATION CODE	PAGE IN DRAWING	LINE ON PAGE	AIC SYMBOL	FEDERAL STOCK NUMBER # DOD IDENTIFICATION CODE	PAGE IN DRAWING	LINE ON PAGE
<i>75MM & 81MM, MTL CNTR, M173 SERIES (CONT.)</i>							
R4FTM	1315-028-4984-C231	19	20				
R4FWM	" " -4985-C230	"	"				21
R4FYM	" " -4985-C230	"	"				22
R4HHM	1315-028-4977-C229	"	"				23
R4HIM	" " -4979-C225	"	"				24
R4HJM	" " -4979-C225	"	"				25
R4JCN	1315-028-4997-C229	"	"				26
R4NVN	" " -4991-C230	"	"				27
R4HMM	" " 4965-C226	"	"				28
R4HNM	" " 4988-C230	"	"				29
R4JAN	" " 4993-C230	"	"				30
							31
RIMDN	1315-028-4681-C026	19	20				35
RIMIN	" " 4682-C032	"	"				36
RIMMN	" " 4684-C029	"	"				37
RIMNN	" " 4685-C028	"	"				38
RIMSN	" " 4679-C027	"	"				39
RIMVN	" " 4680-C027	"	"				40
RIRSM	" " -	"	"				41
RIVDM	" " -	"	"				42
RIVGM	" " -	"	"				43
RIVHM	1315-028-4687-C032	"	"				44
RIVIM	" " 4689-C027	"	"				45
RIVKM	" " 4692-C027	"	"				46
RIVLN	" " 4694-C026	"	"				47
<i>BLACK POWDER, 25LB MTL DRUM</i>							
		21	22				1
<i>CHARGE, PROPELLING, 75MM IN MTL DRUM</i>							
		21	22				6
<i>CHARGE, PROPELLING, 105MM IN MTL DRUM</i>							
		21	22				8
<i>CHARGE, PROPELLING, 280MM, MTL CNTR, M349(T6A) OR M350</i>							
P2TBA	1320-028-4381-D715	21	22				10
P2TAB	" " -5556-D716	"	"				11
<i>POWDER, PROPELLENT, M17 WDN BOX</i>							
		21	22				12
<i>POWDER, PROPELLENT, BOX, STEEL M2 OR MKVII</i>							
		21	22				14
<i>POWDER, PROPELLENT, MTL LVD WDN BOX</i>							
		21	22				16
<i>POWDER, PROPELLENT, IN WDN BOX</i>							
		21	22				18
<i>POWDER, PROPELLENT, (ALT WDN BOX)</i>							
		21	22				20
<i>POWDER, PROPELLENT IN WDN BOX, M24</i>							
		21	22				22