

APPENDIX I

UNITIZATION PROCEDURES FOR BOXED WHITE PHOSPHORUS (WP) AND PLASTICIZED WHITE PHOSPHORUS (PWP) LOADED AMMUNITION ON 4-WAY ENTRY PALLETS

CARTRIDGE, 57MM, PACKED 6 PER WOODEN BOX,
UNITIZED 48 BOXES PER 40" X 48" PALLET;
APPROX BOX SIZE 21 $\frac{1}{2}$ " L X 10 $\frac{1}{2}$ " W X 8 $\frac{1}{8}$ " H

PALLET UNIT DATA						
ITEMS INCLUDED		HAZARD CLASSIFICATION				WEIGHT (LBS)
NSN	DODIC	DOT CLASS	CG CLASS	QD CLASS	COMP GROUP	
1310- 00-021-6050	B590	A	II-D	(12) 1.2	H	2,441
00-182-3233	B590	A	II-D	(12) 1.2	H	2,441

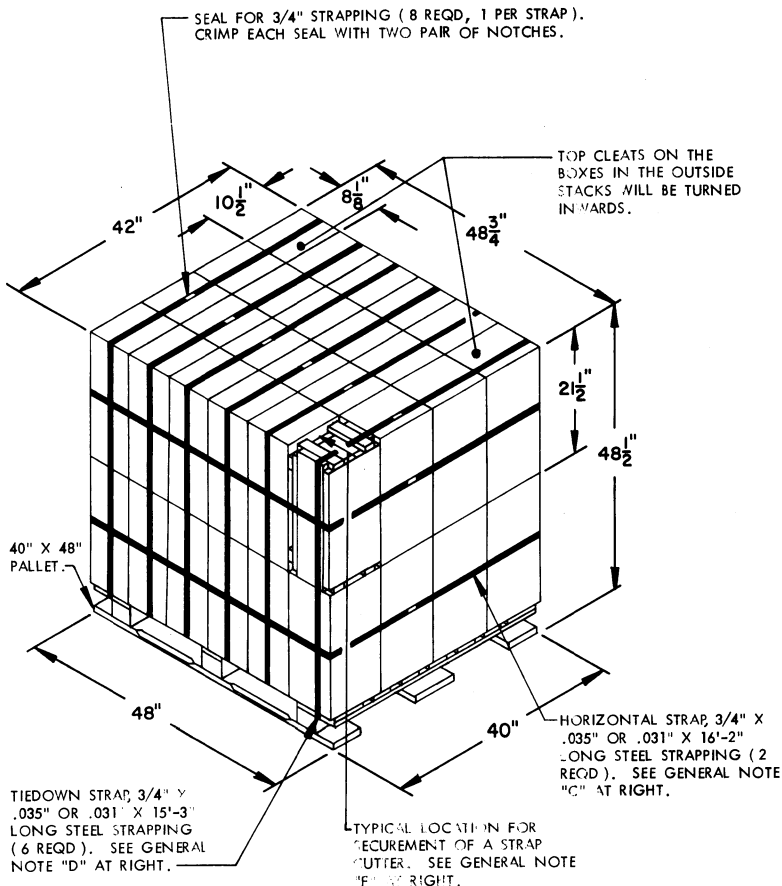
NOTICE: THIS APPENDIX CANNOT STAND ALONE BUT MUST BE USED
IN CONJUNCTION WITH THE BASIC UNITIZATION PROCEDURES
DRAWING 19-48-4015-20PA1004.

REVISIONS				DRAFTSMAN <i>LN / ac</i>	PROJ ENG <i>WRF/HWS</i>
				CHECKER <i>SGS</i>	LOG ENGRG OFFICE <i>W J Ernst</i>
APPROVED, U. S. ARMY ARMAMENT MATERIEL READINESS COMMAND					
<i>Martin</i> <i>W. H. Heston</i>					
APPROVED BY ORDER OF COMMANDING GENERAL, U. S. ARMY MATERIEL DEVELOPMENT AND READINESS COMMAND (DARCOM)					
<i>John L. Reynolds</i>					
U. S. ARMY DEFENSE AMMUNITION CENTER AND SCHOOL					
U. S. ARMY DARCOM DRAWING					
FEBRUARY 1983					
CLASS	DIVISION	DRAWING	FILE		
19	48	4015/1	20PA 1004		

DO NOT SCALE

GENERAL NOTES

- A. THIS APPENDIX CANNOT STAND ALONE BUT MUST BE USED IN CONJUNCTION WITH THE BASIC UNITIZATION PROCEDURES DRAWING 19-48-4015-20PA1004. TO PRODUCE AN APPROVED UNIT LOAD, ALL PERTINENT PROCEDURES, SPECIFICATIONS AND CRITERIA SET FORTH WITHIN THE BASIC DRAWING WILL APPLY TO THE PROCEDURES DELINEATED IN THIS APPENDIX. ANY EXCEPTIONS TO THE BASIC PROCEDURES ARE SPECIFIED IN THIS APPENDIX.
- B. DIMENSIONS, CUBE AND WEIGHT OF A PALLET UNIT WILL VARY SLIGHTLY DEPENDING UPON THE ACTUAL DIMENSIONS OF THE BOXES AND THE WEIGHT OF THE SPECIFIC ITEM BEING UNITIZED.
- C. INSTALL EACH HORIZONTAL STRAP TO ENCIRCLE A LAYER OF BOXES ON THE PALLET. HORIZONTAL STRAPS MUST BE TENSIONED AND SEALED PRIOR TO APPLICATION OF TIEDOWN STRAPS.
- D. INSTALL EACH TIEDOWN STRAP TO PASS UNDER THE DECK/STRINGER BOARDS OF THE PALLET AND TO BE LOCATED AS SHOWN. TIEDOWN STRAPS WILL NOT BE APPLIED UNTIL THE HORIZONTAL STRAPS HAVE BEEN TENSIONED AND SEALED.
- E. THE FOLLOWING DARCOM DRAWINGS ARE APPLICABLE FOR OUT-LOADING AND STORAGE OF THE ITEMS COVERED BY THIS APPENDIX.
 CARLOADING ----- DRAWING 19-48-4115-5PA1002
 TRUCKLOADING ----- DRAWING 19-48-4117-11PA1003
 STORAGE ----- DRAWING 19-48-4118-1-2-3-4-14-22PA1002
- F. FOR METHOD OF SECURING A STRAP CUTTER TO THE PALLET UNIT, SEE DARCOM DRAWING 19-48-4127-20P1000.
- G. IF ITEMS COVERED HEREIN ARE UNITIZED PRIOR TO ISSUANCE OF THIS APPENDIX, THE BOXES NEED NOT BE REUNITIZED SOLELY TO CONFORM TO THIS APPENDIX.
- H. THE UNITIZATION PROCEDURES DEPICTED HEREIN MAY ALSO BE USED FOR UNITIZING 57MM CARTRIDGES, WHEN IDENTIFIED BY DIFFERENT NATIONAL STOCK NUMBERS (NSN) THAN WHAT IS SHOWN ON THE TITLE PAGE, PROVIDED THE BOX PACK DOES NOT VARY FROM WHAT IS DELINEATED HEREIN. THE EXPLOSIVE CLASSIFICATION OF OTHER ITEMS MAY BE DIFFERENT THAN WHAT IS SHOWN.



PALLET UNIT

SEE GENERAL NOTE "B" AT RIGHT.

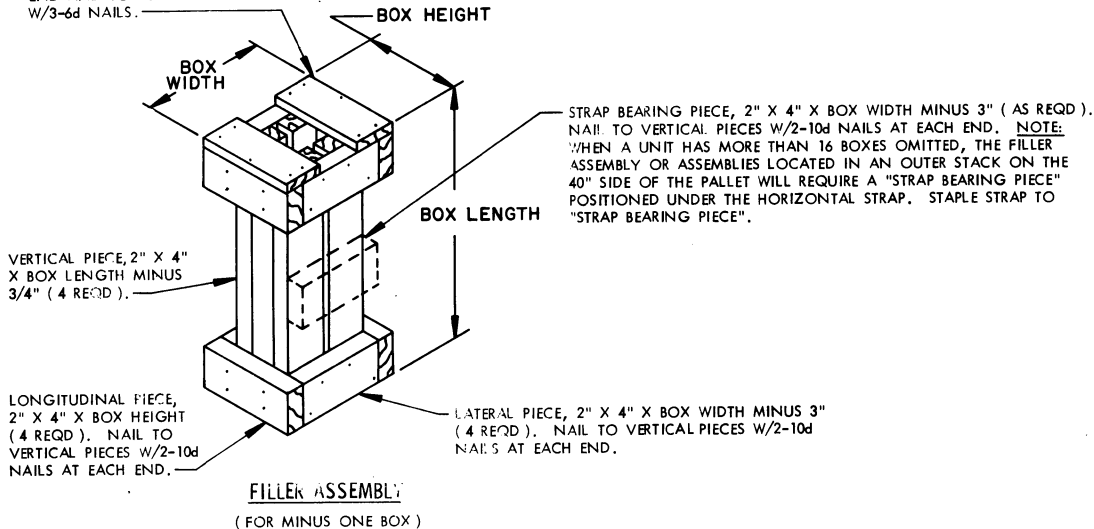
48 BOXES OF 57MM CARTRIDGES (6 PER BOX) @ 49 LBS -----	2,352 LBS (APPROX)
DUNNAGE -----	9 LBS
PALLET -----	80 LBS

TOTAL WEIGHT ----- 2,441 LBS (APPROX)
 CUBE ----- 57.5 CU FT (APPROX)

BILL OF MATERIAL

PALLET, 40" X 48" -----	1 REQD -----	80 LBS
STEEL STRAPPING, 3/4" -----	123.83' REQD -----	8.84 LBS
SEAL FOR 3/4" STRAPPING -----	8 REQD -----	NIL

TIE PIECE, 1" X 4" X BOX HEIGHT (2 REQD).
 NAIL TO LATERAL PIECES W/1-6d NAIL AT EACH
 END AND TO LONGITUDINAL PIECE
 W/3-6d NAILS.



FILLER ASSEMBLY
 (FOR MINUS ONE BOX)