

22 July 1968  
AMC Ammunition Center  
Savanna Army Depot  
Savanna, Illinois

CHANGE ORDER FOR  
19-48 SERIES DRAWING

1. Effective date: 1 August 1968
2. Drawing number: 19-48-4009-5A1000 (Revision 1).
3. Drawing title: **LOADING & BRACING IN BOX CARS OF WP & PWP  
LOADED AMMUNITION PACKED IN WOODEN BOXES**
4. A copy of this change order should be attached to each copy of drawing 5A1000, or "pen and ink" changes can be made to each copy.

The following changes are applicable to the drawing and are current until superseded by revision two ( 2 ) to the drawing.

5. Changes:

Page 4 --- The strut type blocking requirements are to be changed.

- a. The next to the last line in the note at the bottom of the page is to be changed to read: **STRUTS CAN BE 4" X 4", DOUBLED 2" X 6", OR TRIPLED 2" X 6", AS SPECIFIED BY THE CHARTS ON PAGE 2 OF THIS CHANGE ORDER.**
- b. The chart listing the number of struts to be used against each vertical in the gate is to be replaced by the charts on the next page.

*Incl 2*

*Pg 1*

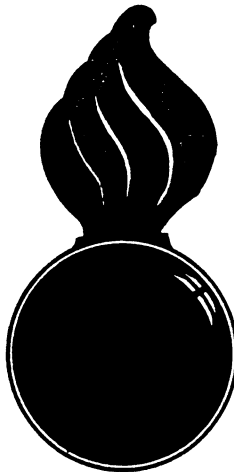
**CHART LISTING NUMBER OF 2" X 6" STRUTS TO BE USED AGAINST EACH VERTICAL IN GATE (D = DOUBLE 2" X 6") (T = TRIPLE 2" X 6")**

WEIGHT OF LOAD	HEIGHT NOT GREATER THAN						
	2 FT	3 FT	4 FT	5 FT	6 FT	7 FT	8 FT
60,000 LBS	2-D	3-D	3-D	4-D	4-D	5-D	5-D
70,000 LBS	3-D	3-D	3-D	4-D	4-D	5-D	5-D
80,000 LBS	3-D	3-D	3-D	4-D	4-D	5-D	5-D
90,000 LBS	3-D	3-D	3-D	4-D	4-D	5-D	5-D
100,000 LBS	3-T	4-D	4-D	4-D	4-D	5-D	5-D
110,000 LBS	3-T	4-D	4-D	4-D	4-D	5-D	5-D
115,000 LBS	3-T	4-D	4-D	4-D	4-D	5-D	5-D
120,000 LBS	3-T	4-D	4-D	4-D	4-D	5-D	5-D

**CHART LISTING NUMBER OF 4" X 4" STRUTS TO BE USED AGAINST EACH VERTICAL IN GATE. NOTE: IF SPACE IS X-ED OUT USE 2" X 6" STRUTS AS SPECIFIED AT COMPARABLE LOCATION IN CHART ABOVE.**

WEIGHT OF LOAD	HEIGHT NOT GREATER THAN						
	2 FT	3 FT	4 FT	5 FT	6 FT	7 FT	8 FT
60,000 LBS	3	3	4	4	4	5	5
70,000 LBS	4	4	4	4	4	5	5
80,000 LBS	4	4	4	4	4	5	5
90,000 LBS	X	5	5	5	5	5	5
100,000 LBS	X	5	5	5	5	5	5
110,000 LBS	X	6	6	6	6	6	6
115,000 LBS	X	6	6	6	6	6	6
120,000 LBS	X	6	6	6	6	6	6

*L. J. Drasomuck*  
INSPECTOR  
DATE 7/14/58



# LOADING & BRACING IN BOX CARS OF WP & PWP LOADED AMMUNITION PACKED IN WOODEN BOXES

## INDEX

PAGE	2	GENERAL NOTES
	3	BOX POSITIONS
	4	CENTER BRACING
	5	CROSS CAR BRACING
	6	PARTIAL LAYER BRACING
	7	PARTIAL LAYER BRACING
	8 & 9	DOORWAY PROTECTION
	10	TABULAR DATA FOR 8'-6" CAR
	11	TABULAR DATA FOR 9'-2" CAR
	12	TABULAR DATA FOR 8'-6" CAR
	13	TABULAR DATA FOR 9'-2" CAR

PAGE	10 & 11	CARTRIDGE	57 MM
	10 & 11	CARTRIDGE	60 MM
	10 & 11	CARTRIDGE	75 MM
	10 & 11	CARTRIDGE	76 MM
	10 & 11	CARTRIDGE	81 MM
	12 & 13	CARTRIDGE	90 MM
	12 & 13	CARTRIDGE	105 MM
	12 & 13	CARTRIDGE	42 MORTAR
	12 & 13	PROJECTILE & PROPELLING CHARGE, 120MM	
	12 & 13	GRENADE, RIFLE	
	12 & 13	ROCKET, 3.5"	

CAUTION:  
SEE GENERAL NOTES PAGE 2

LOADING & BRACING IN BOX CARS OF WP & PWP LOADED AMMUNITION PACKED IN WOODEN BOXES			
DESIGNER R.H.A. B.B.F.	TRACER	ENGINEER C.R.J.	SUBMITTED
CHECKER K.V.	CHECKED	EXAMINED	<i>Brack &amp; Burns</i> MAJOR ORD. CORPS U.S.A.
REVISIONS			EXAMINED
1	2 JULY 58	K.V.	<i>James D. Burke</i> ORD. CORPS U.S.A.
			APPROVED BY ORDER OF THE CHIEF OF ORDNANCE
			<i>Edward A. Burke</i> COL. ORD. CORPS U.S.A.
ORDNANCE CORPS U.S.A.			
20 OCTOBER 1954			
CLASS	DIVISION	DRAWING	FILE
19	48	4009	5A1000

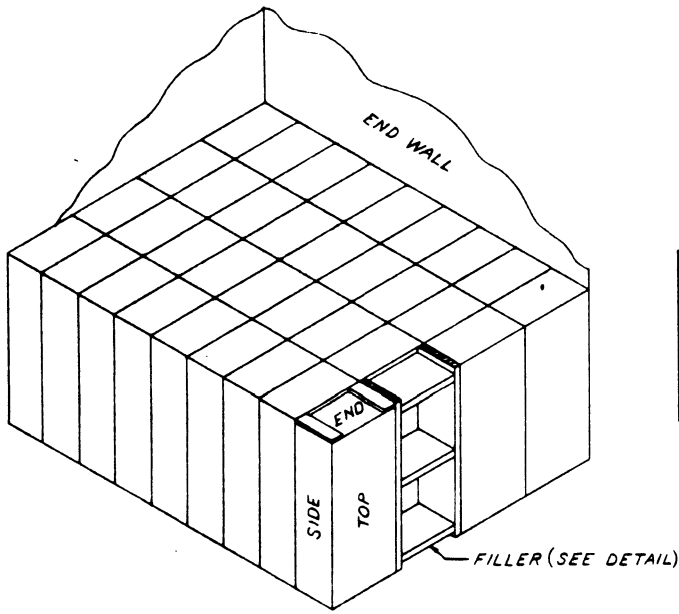
### GENERAL NOTES

1. WP AND/OR PWP LOADED ITEMS OF AMMUNITION WILL ALWAYS BE POSITIONED "NOSE END UP" IN SHIPPING, EXCEPT FOR 3.5" WP FILLED ROCKETS WHICH WILL BE SHIPPED "NOSE END DOWN."
2. IF INSIDE HEIGHT AND LOAD LIMIT PERMIT, ADDITIONAL LAYER(S) MAY BE ADDED TO LOADS SHOWN HEREIN.
3. LOADS AS SHOWN IN TABULAR DATA ARE BASED ON A CAR LENGTH OF 40'-6".
4. VACANT SPACE IN DOORWAY MAY BE GREATER THAN SHOWN IN TABULAR DATA, AT THE OPTION OF THE SHIPPING INSTALLATION.

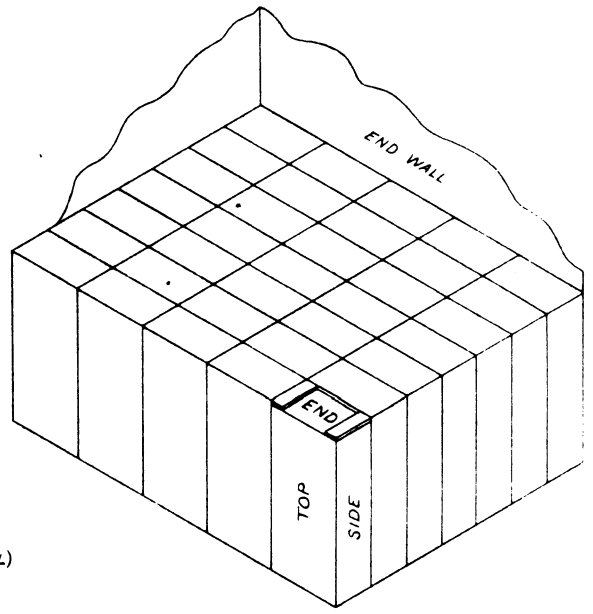
### MATERIAL SPECIFICATIONS \*

LUMBER: SEE PAR. 5400, ORDM 3-4, VOL 2  
NAILS: COMMON, CEMENT COATED, FED SPEC FF-N-105  
ALT: ANNULAR RING TYPE NAILS OF SAME SIZE  
STRAPPING STEEL: 1-1/4" X .035", TYPE I, CLASS A OR C  
FED SPEC QQ-S-781

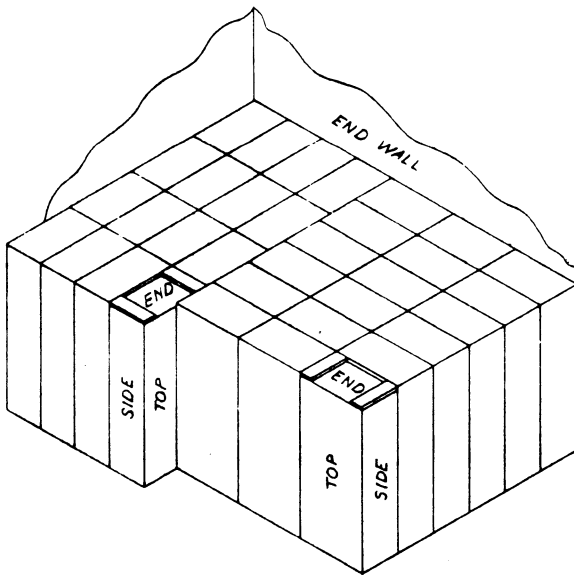
\* USE LATEST CHANGES TO ALL SPECIFICATIONS



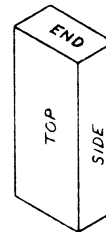
BOX POSITION "A"



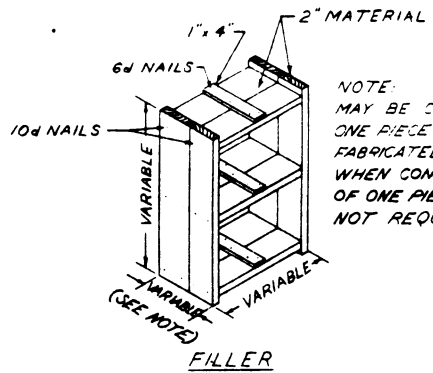
BOX POSITION "B"



BOX POSITION A-B  
(COMBINATION OF POSITIONS)



KEY TO BOX POSITIONS

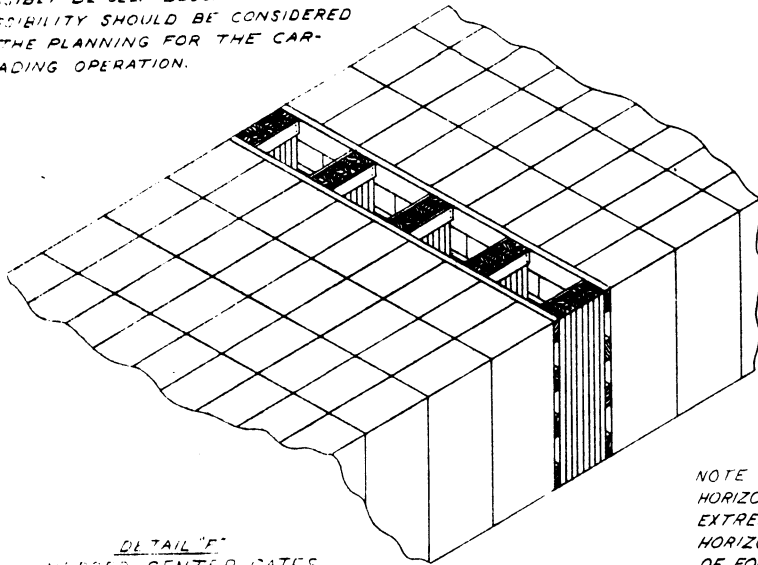


AUTHORIZED BOX POSITIONS FOR WP/PWP ITEMS

**NOTE**

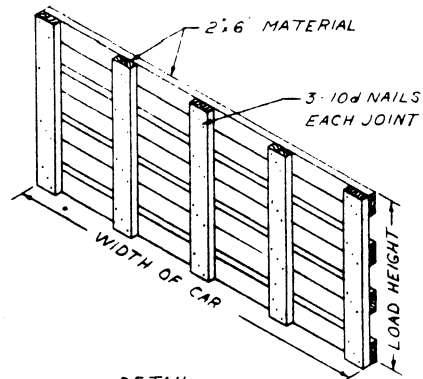
THOSE ITEMS LISTED IN TABULAR DATA WHICH ARE REFERENCED TO THIS NOTE MAY POSSIBLY BE SELF BLOCKING. THIS POSSIBILITY SHOULD BE CONSIDERED IN THE PLANNING FOR THE CAR-LOADING OPERATION.

CENTER BRACING OF WP/PWP AMMUNITION



DETAIL "F"  
WIDGED CENTER GATES

**NOTE:** THIS METHOD TO BE USED FOR CENTER SPACE OF 7" 18". SOLID FILLER WILL BE USED IN CENTER SPACE OF LESS THAN SEVEN INCHES.

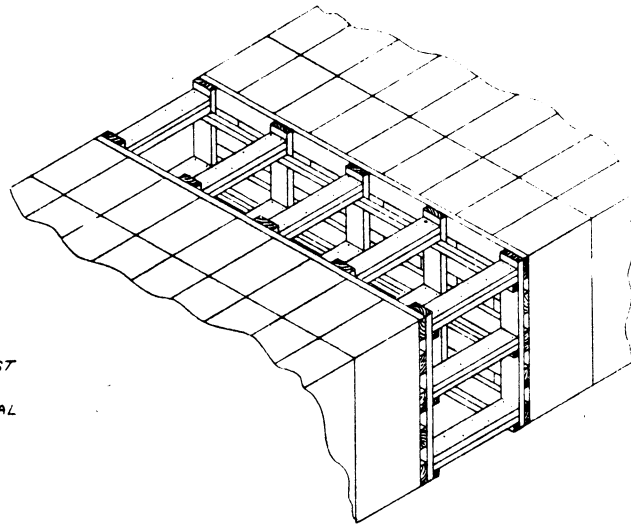


DETAIL  
CENTER GATE CONSTRUCTION

**NOTE:** HORIZONTALS OF CENTER GATE ARE PLACED AT EXTREME TOP AND BOTTOM OF LOAD WITH REMAINING HORIZONTAL(S) EQUALLY SPACED BETWEEN. A MINIMUM OF FOUR (4) HORIZONTALS WILL BE USED IN EACH GATE FOR LOADS TWO (2) LAYERS IN HEIGHT. CENTER GATES FOR LOADS THREE (3) OR MORE LAYERS IN HEIGHT WILL HAVE HORIZONTALS CENTERED ON JOINTS BETWEEN LAYERS.

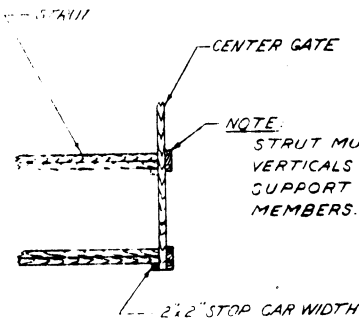
**NOTE:**

WHEN TWO BOX POSITIONS ARE USED ACROSS WIDTH OF CAR AND CENTER SPACE IS AT DIFFERENT LOCATIONS WITH RESPECT TO LENGTH OF CAR, THE CENTER BRACING MUST BE IN SEPARATE UNITS FOR EACH POSITION, UNLESS ADEQUATE FILLER IS USED. MAXIMUM VERTICAL DISTANCE BETWEEN STRUTS 0' 100'



DETAIL "G"  
STRUT-BRACED CENTER GATE

**NOTE:** THIS METHOD TO BE USED WHEN CENTER SPACE EXCEEDS 18"



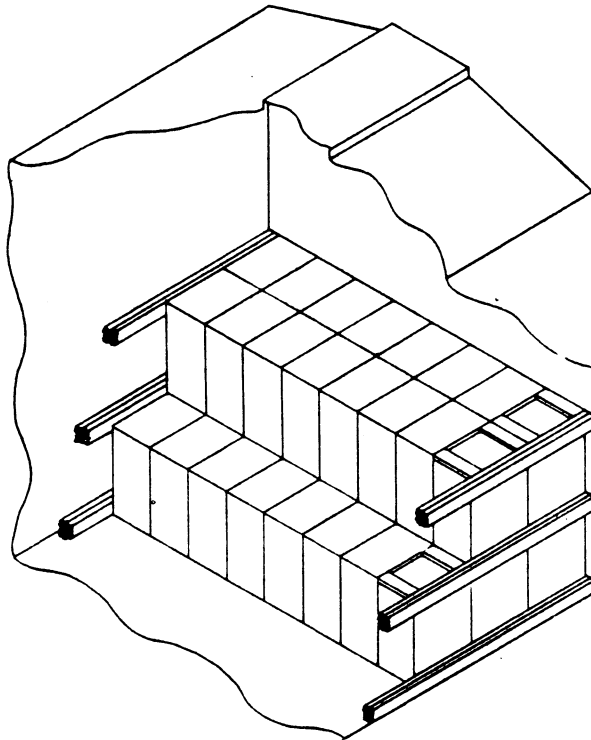
**NOTE:** STRUT MUST BEAR AGAINST VERTICALS AT POINTS OF SUPPORT BY HORIZONTAL MEMBERS.

**NOTE:** WHEN LOAD IS 4 BOXES OR MORE IN WIDTH, USE NOT LESS THAN 5 VERTICALS, EQUALLY SPACED.

**NOTE:** DO NOT NAIL STRUTS TO FLOOR. SPACING MUST BE EQUAL.

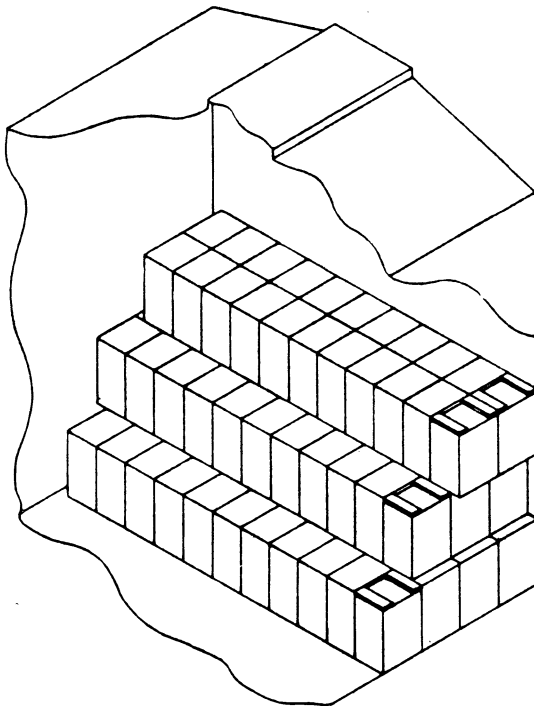
**NOTE:** IT SHOULD NOT BE NECESSARY TO USE STRUTS GREATER THAN 4' IN LENGTH FOR LOADS OF BOXED AMMUNITION. STRUTS GREATER THAN 4' IN LENGTH SHOULD BE BRACED AT CENTER TO PREVENT SPRINGING. STRUTS CAN BE EITHER 4" x 4" OR DOUBLED 2" x 6" MATERIAL NAILED TOGETHER WITH ONE 10d NAIL EVERY 12". VERTICAL SPACING OF STRUTS SHOULD BE EQUAL.

WT. OF LOAD	HEIGHT NOT GREATER THAN						
	2'	3'	4'	5'	6'	7'	8'
60,000 LB.	2	3	3	4	4	4	5
70,000 "	2	3	3	4	4	4	5
80,000 "	2	3	3	4	4	4	5
90,000 "	3	3	3	4	4	4	5
100,000 "	3	3	4	4	4	4	5
110,000 "	3	3	4	4	4	4	5
115,000 "	3	3	4	4	4	4	5
120,000 "	3	3	4	4	4	4	5



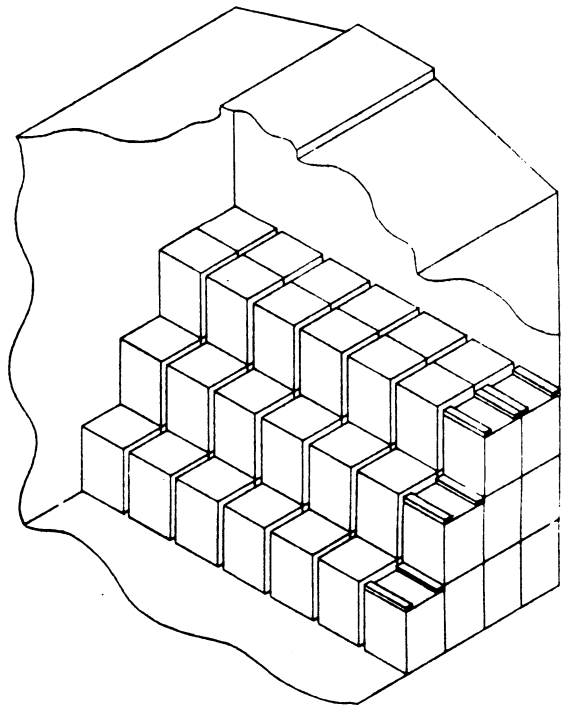
NOTE:  
 EXCESS SPACE ACROSS WIDTH OF CAR MUST NOT EXCEED ONE-THIRD THE BOX DIMENSION PLACED CROSSWISE IN THE CAR. IN THOSE INSTANCES WHEREIN END CLEATS OF BOXES ARE POSITIONED LONGITUDINALLY IN THE CAR, THE EXCESS SPACE MUST BE LESS THAN THE WIDTH OF THE CLEAT.

SIDEWALL HORIZONTAL FILLER  
 FOR BOX POSITIONS A, B, OR A-B



DISTRIBUTION OF SPACE BY ALTERNATING LAYERS AGAINST OPPOSITE SIDES OF CAR

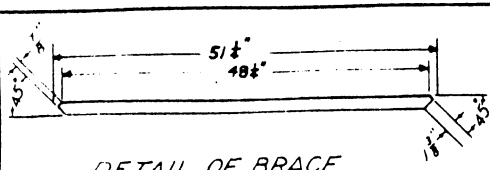
FOR BOX POSITION "A" ONLY  
 (SEE NOTE ABOVE)



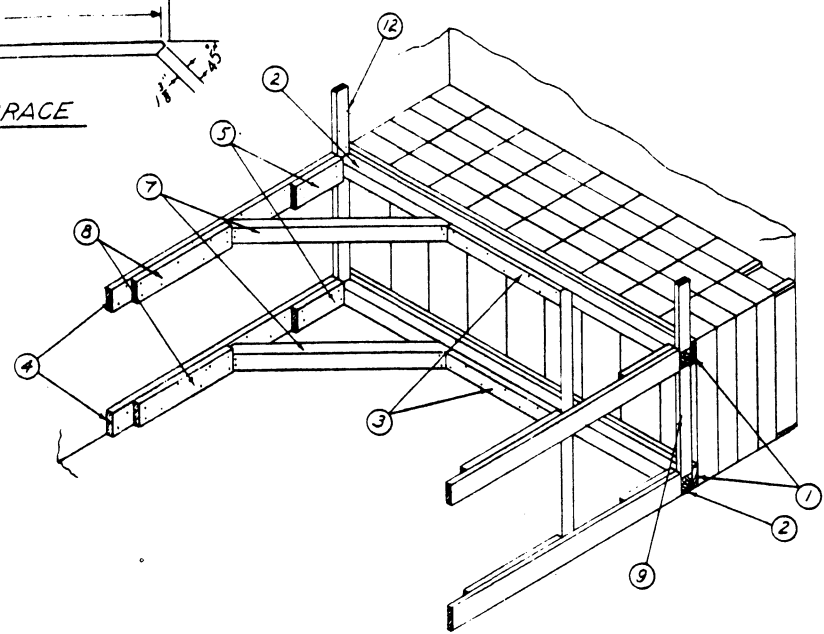
DISTRIBUTION OF SPACE ACROSS WIDTH OF LOAD

FOR BOX POSITION "A" ONLY  
 (SEE NOTE ABOVE)

METHODS OF HANDLING EXCESS SPACE  
ACROSS WIDTH OF CAR

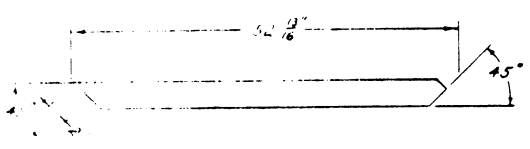


DETAIL OF BRACE

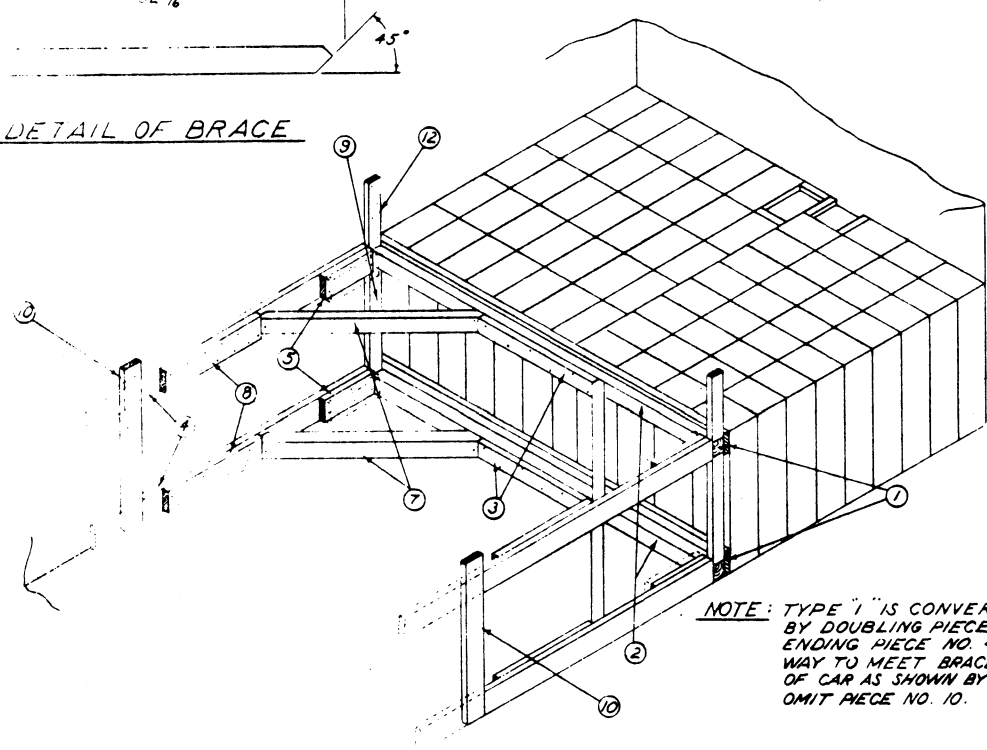


DETAIL A

BRACING FOR LOADS OF 8000 LBS OR LESS



DETAIL OF BRACE

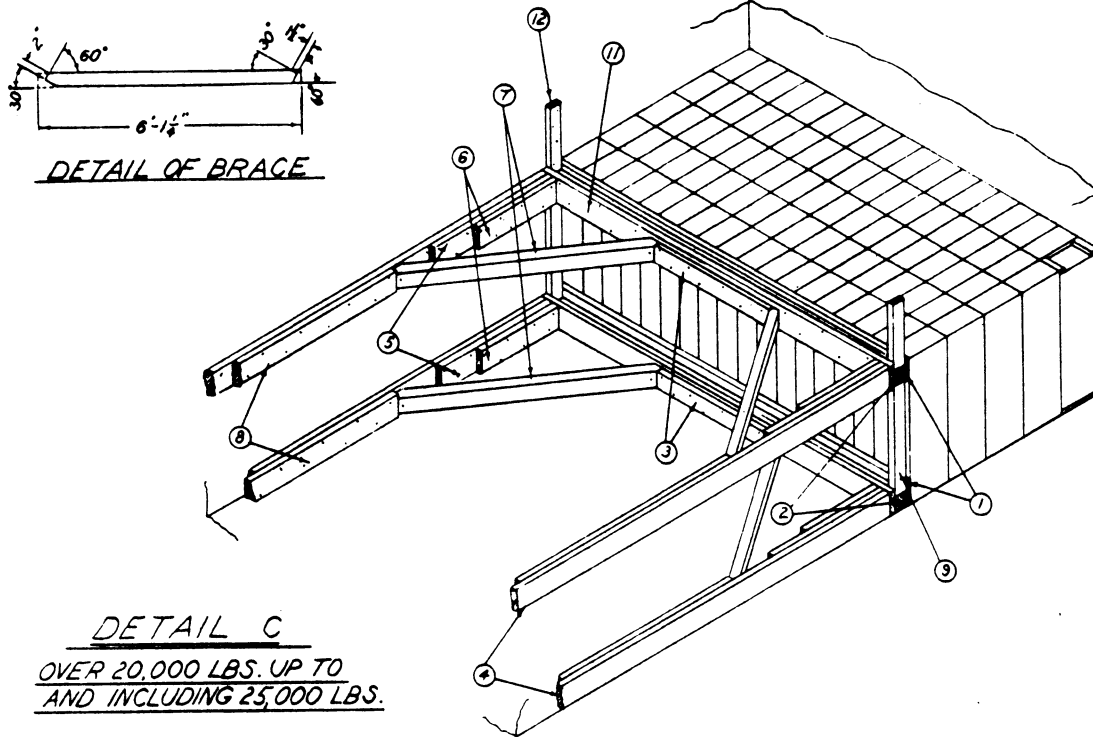


NOTE: TYPE "1" IS CONVERTED TO TYPE "2" BY DOUBLING PIECE NO. 5 AND EXTENDING PIECE NO. 4 ACROSS DOORWAY TO MEET BRACE IN OPPOSITE END OF CAR AS SHOWN BY DOTTED LINES. OMIT PIECE NO. 10.

DETAIL B

TYPE "1" - OVER 8000 LBS UP TO AND INCLUDING 14,000 LBS  
TYPE "2" - OVER 14,000 LBS UP TO AND INCLUDING 20,000 LBS



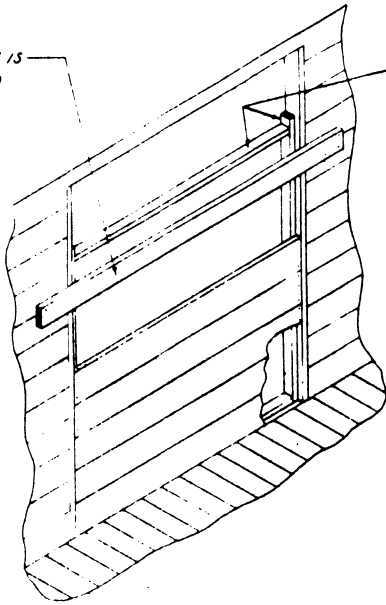


LUMBER & NAILING DATA						
DETAIL	PIECE NO.	SIZE	NO. REQD	NAIL TO	NAILS NO.	NAILS SIZE
A, B, C	1	2" x 6" CAR WIDTH	2	2	2/FT	16d
A, B, C	2	4" x 4" CAR WIDTH	2	SEE 1		
A, B, C	3	2" x 4" #	2	2	7	20d
A, B-TYPE 1	4	2" x 6" x 6'-0"	4	CAR WALL	16	12d
B-TYPE 2, C	4	2" x 6" - EXT. ACROSS DOOR	4	CAR WALL	40	12d
A	5	2" x 6" x 1'-0"	4	4	4	20d
B-TYPE 1	5	2" x 6" x 1'-6"	4	4	7	20d
B-TYPE 2	5	2" x 6" x 1'-6"	8	4-5	7	20d
C	5	2" x 6" x 3'-0"	4	4	10	20d
C	6	2" x 6" x 2'-0"	4	5	7	20d
A	7	2" x 4" (SEE DETAIL)	4	2-4	1EA END	20d
B	7	4" x 4" ( " " )	4	2-4	" "	60d
C	7	4" x 4" ( " " )	4	4-11	" "	60d
A	8	2" x 6" x 2'-0"	4	4	8	20d
B	8	2" x 6" x 2'-6"	4	4	14	20d
C	8	2" x 6" - EXT. ACROSS DOOR	4	4	18	20d
A, B, C	9	2" x 4" - GOVERNED BY LOAD HT	2	CAR WALL	4	12d
B-TYPE 1	10	2" x 6" - SLIGHTLY ABOVE LOAD	2	CAR WALL	8	12d
C	11	2" x 6" CAR WIDTH	2	2	2/FT	16d
A, B, C	12	2" x 4" x 1'-6" IF CAR WEIGHT PERMITS	2	CAR WALL	4	12d

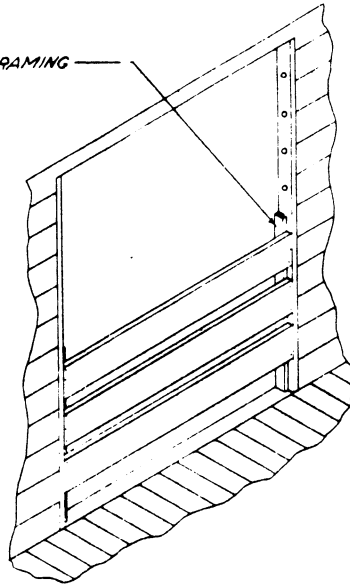
NOTE \* PIECE NO. 3 IS 2'-4" LONG FOR 8'-6" WIDTH CAR, 2'-7" LONG FOR 8'-9" WIDTH CAR, AND 3'-0" LONG FOR 9'-2" WIDTH CAR.

TYPICAL DOORWAY PROTECTION

THIS PIECE IS ABOVE LOAD (2' 6" MIN)



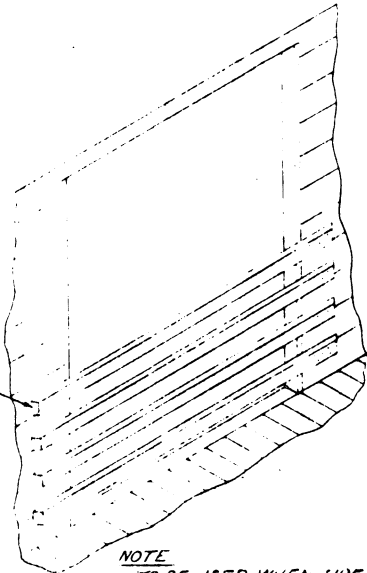
2"x3" FRAMING



NOTE  
TO BE USED WHEN DOOR POSTS ARE SQUARE WITHOUT NAIL HOLES.

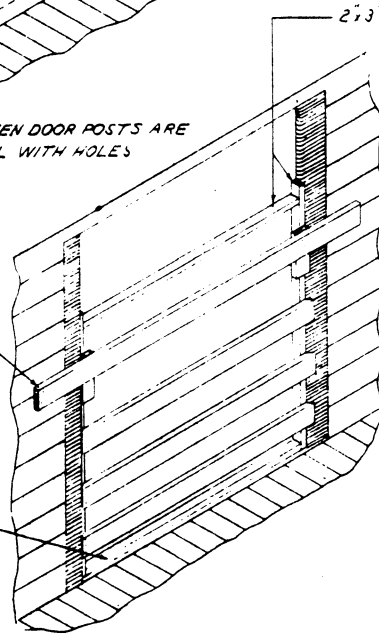
NOTE  
TO BE USED WHEN DOOR POSTS ARE WOOD OR STEEL WITH HOLES FOR NAILING.

THIS BEVELED



THIS PIECE IS ABOVE LOAD (2' 6" MIN)

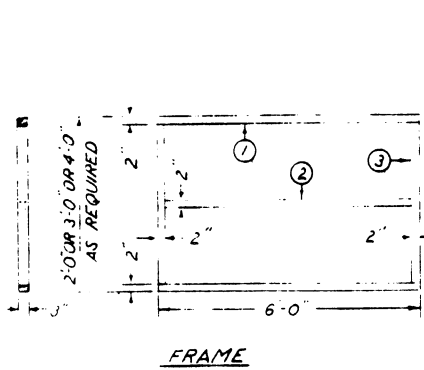
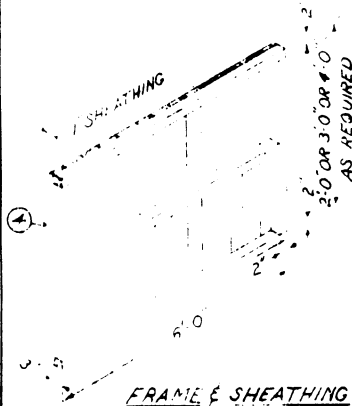
CUT SLIGHTLY LONGER THAN MEASURED AND WEDGE IN TO PLACE FOR CARS WITH STEEL THRESHOLDS.



2"x3" FRAMING

NOTE  
TO BE USED WHEN DOOR POSTS ARE ROUNDED STEEL.

NOTE  
TO BE USED WHEN SIDE PILLARS REQUIRED.



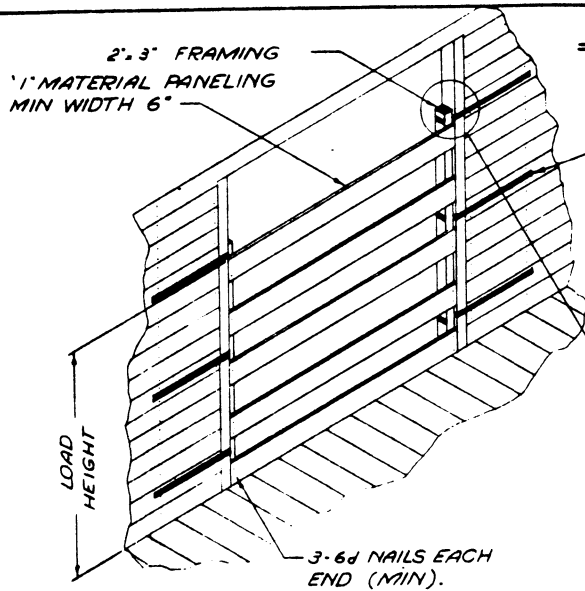
FRAME

FRAME & SHEATHING

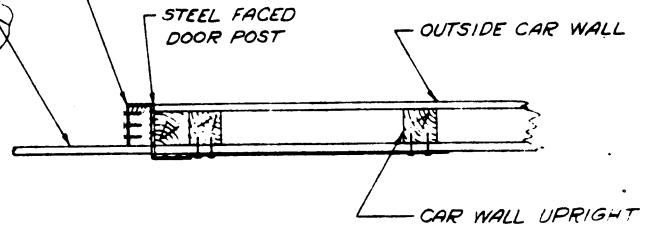
BILL OF MATERIAL

PC NO	DESCRIPTION	NO REQD	MATERIAL
<u>PCS REQUIRED FOR 2'-0" HIGH DOOR GATE</u>			
1	UPPER & LOWER BRACE	2	2"x3"x6'-0"
2	CENTER BRACE	1	2"x3"x5'-8"
3	SIDE BRACES	2	2"x3"x1'-8"
4	SHEATHING		RANDOM WIDTH 1"x2'-0" LONG
<u>PCS REQUIRED FOR 3'-0" HIGH DOOR GATE</u>			
1	UPPER & LOWER BRACE	2	2"x3"x6'-0"
2	CENTER BRACE	1	2"x3"x5'-8"
3	SIDE BRACES	2	2"x3"x2'-8"
4	SHEATHING		RANDOM WIDTH 1"x3'-0" LONG
<u>PCS REQUIRED FOR 4'-0" HIGH DOOR GATE</u>			
1	UPPER & LOWER BRACE	2	2"x3"x6'-0"
2	CENTER BRACE	1	2"x3"x5'-8"
3	SIDE BRACES	2	2"x3"x3'-8"
4	SHEATHING		RANDOM WIDTH 1"x4'-0" LONG

TYPICAL DOORWAY PROTECTION

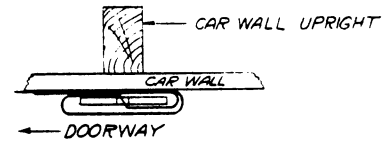
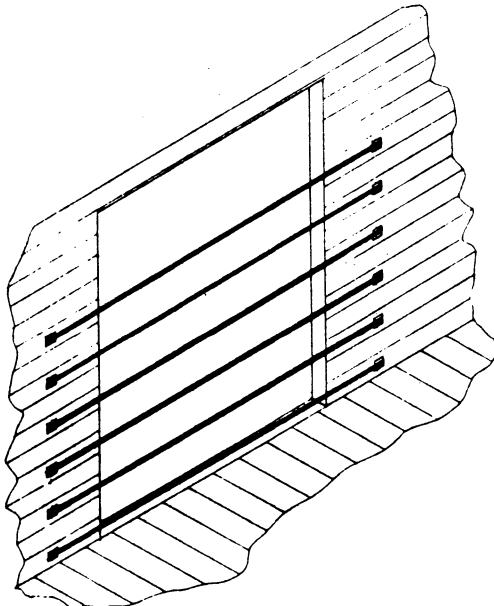


STEEL STRAPPING, 1/2" x .035", TYPE 2, CLASS 'A' OR 'C'. ALTERNATE - 1/2" x .035", TYPE 1, CLASS 'A' OR 'C', PUNCHED FOR NAILING. NAIL INTO CAR WALL UPRIGHTS W/4d NAILS. (MIN TOTAL 7 PER STRAP) SEE NOTE \*



NOTE  
ALTERNATE METHOD OF SECURING DOORWAY PROTECTION IN RAIL CARS WITH STEEL OR STEEL-FACED DOOR POSTS.

NOTE \*  
STRAPS SHOULD BE OF SUFFICIENT LENGTH TO EXTEND BEYOND THE SECOND HEAVY UPRIGHT SUPPORTING THE LINING. NAILS SHOULD BE INTO THE UPRIGHTS IN THE WALL.



DETAIL  
THREADING OF STRAP IN ANCHOR PLATE

STRAP SIZE	PERMISSIBLE WEIGHT PER LAYER OPPOSITE DOORWAY
1/2" x .035"	6,000 LBS.
3/8" x .035"	3,000 LBS.
3/8" x .020"	1,500 LBS.

NOTE:  
CANNOT BE USED WHEN LOADING BULK EXPLOSIVES, FIBRE BOXES, BOMBS AND SEPARATE LOADING SHELLS.  
ANCHOR PLATES MUST BE NAILED TO DOOR POSTS OR TO CAR WALL UPRIGHTS.

ALL STRAPS MUST BE TENSIONED AND SEALED.  
SEE NOTE ②

NOTE ③  
STRAPPING SHOWN IS NAILLESS TYPE. NAIL-ON STRAPPING MAY BE USED AS ALTERNATIVE. USE 4-1 1/2" DRIVE SCREWS OR 4-1 1/2" ANCHOR NAILS ON EACH SIDE OF DOORWAY PER STRAP, IN LIEU OF ANCHOR PLATES.

— GENERAL NOTES —

- 1 USE 12d NAILS WHEN ASSEMBLING 2" MATERIAL TO DOOR GATE FRAME AND WHEN NAILING 2" MATERIAL OR FRAMING TO CAR. 8d NAILS WILL BE USED FOR 1" MATERIAL.
- 2 DOOR GATES NEED ONLY BE AS HIGH AS THE LOAD, EXCEPT WHERE 2' x 6" NAILER ABOVE LOAD IS REQUIRED.
- 3 ALL LUMBER SIZES NOTED ARE NOMINAL. (FINISHED OR ROUGH).

TABULAN DATA FUM B B BUA LAM

L I N E	AIC	FSH & DOG IDENTIFICATION CODE	PAG SI (FLOS)	RDS PER PKG	DIMENSIONS OF BOX IN INCHES	BOXES DIRTH OF CAN	BOXES LENGHT OF CAN	FULL LOADING PER CAN	FORMS PAGES	TOTAL RDS	TOTAL WEIGHT (LBS)	CANADA MARKING DETAIL (SEE PAGE 4)	SPACE OF CARTON (IN INCHES)	HEIGHT OF FULL LAYERS (IN INCHES)	L I N E
CARTRIDGE, 5700															
1	R1JAA	1310 020 4301 0500	43.4	4	2 1/2 x 8 1/2 x 9 1/2	12 0 0 1/2	52 0 9 1/2	3	1,072	7,400	01,245	F	11 1/2	00 1/2	1
2	R1JCB	1310 300 5302 0500	43.4	4	2 1/2 x 8 1/2 x 9 1/2	12 0 0 1/2	52 0 9 1/2	3	1,072	7,400	01,245	F	11 1/2	00 1/2	2
3	R1JJA	1310 300 5303 0500	37.4	4	2 2/2 x 7 1/2 x 8 1/2	12 0 0 1/2	62 0 7 1/2	3	2,232	0,920	02,304	F	12 1/2	00 1/2	3
4	R1JJA	1310 020 4502 0500	30.4	4	2 2/2 x 7 1/2 x 8 1/2	12 0 0 1/2	62 0 7 1/2	3	2,232	0,920	04,016	F	13 1/2	00	4
CARTRIDGE, 6000															
8	RACRA	1310 301 1702 0630	61.6	10	10 x 14 x 8 1/2	12 0 0 1/2	34 0 14	4	1,632	10,320	90,552	F	10	70	8
9	RACBC	1310 301 1736 0630	61.6	10	17 1/2 x 13 1/2 x 8 1/2	12 0 0 1/2	34 0 13 1/2	4	1,632	10,320	90,552	S	10 1/2	71	9
10	RACJA	1310 020 4031 0630	63.5	10	17 1/2 x 7 1/2 x 14 1/2	14 0 0 7 1/2	33 0 14 1/2	3	1,300	13,000	00,011	F	15 1/2	30 1/2	10
11	RACJB	1310 301 1737 0630	61.6	10	17 1/2 x 13 1/2 x 8 1/2	12 0 0 1/2	34 0 13 1/2	4	1,632	10,320	90,552	S	10 1/2	71	11
12	RACPA	1310 020 4040 0630	52.4	8	15 1/2 x 14 1/2 x 7 1/2	6 0 7 1/2	33 0 14 1/2	4	1,000	14,000	94,320	F	13 1/2	61 1/2	12
13	RACPB	1310 020 4050 0630	60.4	10	17 1/2 x 7 1/2 x 14 1/2	7 0 14 1/2	63 0 7 1/2	4	1,704	17,040	100,040	F	12 1/2	71	13
CARTRIDGE, 7500															
17	R1RJA	1315 020 4621 C000	117.0	4	32 1/2 x 9 1/2 x 9 1/2	10 0 0 1/2	40 0 9 1/2	2	900	3,920	114,000	F	8 1/2	05 1/2	17
18	R1RJB	1315 020 4620 C000	63.5	2	31 1/2 x 9 1/2 x 6 1/2	14 0 6 1/2	49 0 9 1/2	2	1,510	3,030	94,000	F	17 1/2	62 1/2	18
19	R1R1C	1315 020 4673 C032	59.0	2	20 1/2 x 9 1/2 x 6 1/2	14 0 6 1/2	49 0 9 1/2	2	1,510	3,030	90,770	F	17 1/2	50 1/2	19
20	R1R1B	1315 020 4675 C032	111.0	4	29 1/2 x 9 1/2 x 9 1/2	10 0 0 1/2	40 0 9 1/2	2	900	3,920	100,700	F	8 1/2	50 1/2	20
21	R1R1A	1315 020 4650 C050	74.0	2	34 1/2 x 11 1/2 x 7 1/2	8 0 7 1/2	41 0 11 1/2	2	1,122	2,204	83,700	F	12 1/2	00 1/2	21
22	R1R1A	1315 020 4640 C064	76.5	2	34 1/2 x 12 1/2 x 7 1/2	5 0 11 1/2	44 0 7 1/2	2	1,000	2,040	70,320	F	12 1/2	00 1/2	22
23	R1R1A	1315 020 4649 C056	80.4	2	34 1/2 x 11 1/2 x 7 1/2	7 0 12 1/2	42 0 7 1/2	2	1,100	2,200	92,200	F	10 1/2	00 1/2	23
CARTRIDGE, 7000															
27	R1TFA	1315 020 4714 C100	71.1	2	37 x 9 1/2 x 6 1/2	14 0 6 1/2	49 0 9 1/2	2	1,510	3,030	107,030	F	8 1/2	74	27
28	R1TFA	1315 020 4697 C100	75.6	2	37 x 9 1/2 x 6 1/2	14 0 6 1/2	49 0 9 1/2	2	1,510	3,030	113,000	F	8 1/2	74	28
29	R1TFA	1315 020 4702 C100	70.6	2	37 x 9 1/2 x 6 1/2	14 0 6 1/2	49 0 9 1/2	2	1,510	3,030	100,200	F	8 1/2	74	29
30	R1TJA	1315 020 4702 C100	70.6	2	37 x 9 1/2 x 6 1/2	14 0 6 1/2	49 0 9 1/2	2	1,510	3,030	100,200	F	8 1/2	74	30
31	RANBA	1315 020 4733 C120	85.6	2	30 1/2 x 11 1/2 x 7 1/2	14 0 7 1/2	43 0 11 1/2	2	1,204	2,400	100,340	F	7 1/2	70 1/2	31
32	RANBS	1315 020 4737 C120	85.6	2	30 1/2 x 11 1/2 x 7 1/2	14 0 7 1/2	43 0 11 1/2	2	1,204	2,400	100,340	F	7 1/2	70 1/2	32
CARTRIDGE, 8100															
36	RANVA	1315 020 4070 C200	45.4	2	27 1/2 x 9 1/2 x 6 1/2	10 0 6 1/2	40 0 9 1/2	3	2,300	4,704	107,100	F	8 1/2	03 1/2	36
37	RANVA	1315 020 4090 C200	43.2	2	27 1/2 x 9 1/2 x 6 1/2	10 0 6 1/2	40 0 9 1/2	3	2,290	4,512	97,000	F	8 1/2	03 1/2	37
38	RAJEA	1315 020 4090 C200	48.4	2	27 1/2 x 9 1/2 x 6 1/2	10 0 6 1/2	40 0 9 1/2	3	2,300	4,704	107,100	F	8 1/2	03 1/2	38
39	RANVA	1315 301 1003 C031	42.6	2	20 1/2 x 9 1/2 x 6 1/2	14 0 6 1/2	40 0 9 1/2	3	2,277	4,504	90,000	F	11 1/2	00 1/2	39
40	RANBA	1315 020 4907 C200	45.4	2	27 1/2 x 9 1/2 x 6 1/2	10 0 6 1/2	40 0 9 1/2	3	2,290	4,512	101,300	F	8 1/2	00 1/2	40
41	R1JAA	1315 020 4992 C200	45.4	2	27 1/2 x 9 1/2 x 6 1/2	10 0 6 1/2	40 0 9 1/2	3	2,290	4,512	101,300	F	8 1/2	00 1/2	41
42	RANBA	1315 020 4000 C021	44.4	2	30 1/2 x 9 1/2 x 6 1/2	14 0 6 1/2	40 0 9 1/2	3	2,277	4,504	90,000	F	11 1/2	00 1/2	42

L I N E	A/C SYMBOL	FSM & DDD IDENTIFICATION CODE	WT (LBS)	RDS PER PKG	DIMENSIONS OF BOX IN INCHES	DIAMETER OF CAR	BOXES LENGTH OF CAR	FULL LAYERS PER CAR	TOTAL PKGS	TOTAL RDS	TOTAL WEIGHT (LBS)	CENTER BRACING DETAIL (SEE PAGE 4) NOTE @ PAGE 4	SPACE AT CENTER (IN INCHES)	HEIGHT OF FULL LAYERS (IN INCHES)	L I N E
CARTRIDGE, 5700															
1	RIJAA	1310 020 4501 0590	43.4	4	21 1/2 X 8 1/2 X 9 1/2	12 0 9 1/2	50 0 0 1/2	3	2,000	8,352	90,619	SEE NOTE 0	3"	65 1/2	1
2	RIJCB	1310 300 5502 0590	43.4	4	21 1/2 X 8 1/2 X 9 1/2	12 0 9 1/2	50 0 0 1/2	3	2,000	8,352	90,619	SEE NOTE 0	3"	65 1/2	2
3	RIJTA	1310 300 5503 0590	37.0	4	22 1/2 X 7 1/2 X 8 1/2	12 0 0 1/2	42 0 7 1/2	3	2,400	9,600	80,800	F #	13 1/2	66 1/2	3
4	RIJWA	1310 020 4502 0590	30.0	4	22 X 7 1/2 X 8 1/2	1 0 7 1/2	56 0 0 1/2	3	2,400	9,600	91,200	F #	10	66	4
5															5
6															6
7															7
CARTRIDGE, 6000															
8	RACBA	1310 301 1742 0630	61.0	10	10 X 14 X 8 1/2	8 0 8 1/2	34 0 1 1/2	4	1,700	17,000	107,360	F	10	72	8
9	RACBC	1310 301 1736 0630	61.0	10	17 1/2 X 13 1/2 X 8 1/2	13 0 0 1/2	34 0 1 1/2	4	1,700	17,000	107,040	S	10 1/2	71	9
10	RACJA	1310 020 4031 0630	63.5	10	17 1/2 X 7 1/2 X 14 1/2	15 0 7 1/2	33 0 1 1/2	3	1,405	14,050	94,290	F	15 1/2	52 1/2	10
11	RACJB	1310 301 1737 0630	61.0	10	17 1/2 X 13 1/2 X 8 1/2	13 0 0 1/2	34 0 1 1/2	4	1,700	17,000	107,040	S	10 1/2	71	11
12	RACPA	1310 020 4049 0630	52.4	8	15 1/2 X 14 1/2 X 7 1/2	9 0 7 1/2	33 0 1 1/2	4	1,944	15,552	101,045	F #	13 1/2	61 1/2	12
13	RACPB	1310 020 4950 0630	60.3	10	17 1/2 X 7 1/2 X 14 1/2	5 0 1 1/2	63 0 7 1/2	3	1,440	14,400	86,400	F #	7 1/2	53 1/2	13
14															14
15															15
16															16
CARTRIDGE, 7500															
17	RIRJA	1315 020 4621 C000	117.0	4	32 1/2 X 9 1/2 X 9 1/2	11 0 9 1/2	49 0 9 1/2	1	539	2,156	63,063	F	8 1/2	32 1/2	17
18	RIRJB	1315 020 4620 C000	63.5	2	31 1/2 X 9 1/2 X 6 1/2	15 0 6 1/2	49 0 9 1/2	2	1,616	3,232	102,293	F #	8 1/2	62 1/2	18
19	RIRIC	1315 020 4673 C032	59.0	2	28 1/2 X 9 1/2 X 6 1/2	1 0 9 1/2	49 0 9 1/2	2	1,616	3,232	96,637	F #	11 1/2	56 1/2	19
20	RIRID	1315 020 4675 C032	111.0	4	29 1/2 X 9 1/2 X 9 1/2	11 0 9 1/2	49 0 9 1/2	1	539	2,156	59,829	F	8 1/2	29 1/2	20
21	RINEA	1315 020 4650 C056	74.0	2	34 1/2 X 11 1/2 X 7 1/2	4 0 7 1/2	41 0 1 1/2	2	1,224	2,448	90,576	F #	14 1/2	60 1/2	21
22	RINAA	1315 020 4640 C056	76.5	2	34 1/2 X 12 1/2 X 7 1/2	0 0 7 1/2	39 0 1 1/2	2	1,120	2,240	85,680	F #	13 1/2	60 1/2	22
23	RINBA	1315 020 4649 C056	80.4	2	34 1/2 X 11 1/2 X 7 1/2	12 0 7 1/2	41 0 1 1/2	2	1,240	2,480	100,339	F #	14 1/2	60 1/2	23
24															24
25															25
26															26
CARTRIDGE, 7600															
27	RITTA	1315 020 4714 C100	71.1	2	37 X 9 1/2 X 6 1/2	15 0 6 1/2	49 0 9 1/2	2	1,616	3,232	114,098	F #	8 1/2	74	27
28	RITTS	1315 020 4697 C100	75.0	2	37 X 9 1/2 X 6 1/2	1 0 9 1/2	73 0 6 1/2	1	809	1,616	60,600	F #	11 1/2	37	28
29	RITKA	1315 020 4702 C100	78.0	2	37 X 9 1/2 X 6 1/2	15 0 6 1/2	49 0 9 1/2	2	1,616	3,232	113,120	F #	11 1/2	74	29
30	RITJA	1315 020 4702 C100	70.0	2	37 X 9 1/2 X 6 1/2	1 0 9 1/2	73 0 6 1/2	2	1,616	3,232	113,120	F #	11 1/2	74	30
31	RANNA	1315 020 4733 C120	85.0	2	39 1/2 X 11 1/2 X 7 1/2	9 0 7 1/2	43 0 1 1/2	2	1,302	2,604	110,670	F	7 1/2	70 1/2	31
32	RANNS	1315 020 4737 C120	85.0	2	39 1/2 X 11 1/2 X 7 1/2	4 0 1 1/2	66 0 7 1/2	2	1,302	2,604	110,670	F	7 1/2	70 1/2	32
33															33
34															34
35															35
CARTRIDGE, 8100															
36	RANPA	1315 020 4976 C230	45.0	2	27 1/2 X 9 1/2 X 6 1/2	2 0 6 1/2	49 0 9 1/2	2	1,716	3,432	77,220	F #	11	55 1/2	36
37	RANVA	1315 020 4990 C230	43.3	2	27 1/2 X 9 1/2 X 6 1/2	10 0 9 1/2	76 0 6 1/2	3	2,421	4,842	104,829	F #	9	83 1/2	37
38	RANWA	1315 020 4999 C230	45.0	2	27 1/2 X 9 1/2 X 6 1/2	15 0 6 1/2	49 0 9 1/2	2	1,716	3,432	77,220	F #	11	55 1/2	38
39	RANXA	1315 020 4999 C230	45.0	2	27 1/2 X 9 1/2 X 6 1/2	10 0 9 1/2	76 0 6 1/2	2	1,716	3,432	77,220	F #	11	55 1/2	39
40	RANNA	1315 020 4981 C230	45.0	2	27 1/2 X 9 1/2 X 6 1/2	15 0 6 1/2	49 0 9 1/2	3	2,421	4,842	100,945	F #	9	82 1/2	40
41	RANJAA	1315 020 4992 C230	45.0	2	27 1/2 X 9 1/2 X 6 1/2	1 0 9 1/2	72 0 6 1/2	3	2,421	4,842	100,945	F #	9	82 1/2	41
42	RANPA	1315 020 4900 C231	42.0	2	29 1/2 X 9 1/2 X 6 1/2	15 0 6 1/2	49 0 9 1/2	3	2,424	4,848	101,000	F #	11 1/2	80 1/2	42
43															43
44															44
45															45

LINE SYMBOL	PSN & 000 IDENTIFICATION CODE	PKG WT (LBS)	DOS PER PKG	DIMENSIONS OF BOX IN INCHES	BOXES WIDTH OF CAR	BOXES LENGTH OF CAR	FULL LAYERS PER CAR	TOTAL PKGS	TOTAL NOS	TOTAL WEIGHT (LBS)	CENTER BRACING DETAIL (SEE PAGE 4) NOTE @ PAGE 4		SPACE AT CENTER (IN INCHES)	HEIGHT OF FULL LAYERS (IN INCHES)	LINE NUMBER
											S	M			
CARTRIDGE, 90MM															
1	PS24	1315 020 4402 C273	130.0	2	43 1/2 X 13 X 8	3 0 0 0 0 13 30 0 13	1	402	924	60,000	S	10		43 1/2	1
2	PS25	1315 020 4421 C273	129.0	2	42 1/2 X 12 X 8	3 0 0 0 0 13 30 0 13	1	402	924	62,370	F *	10		42 1/2	2
3	PS24	1315 020 4476 C273	132.0	2	43 1/2 X 13 X 7 1/2	12 0 7 1/2 1 0 13 30 0 13	1	400	992	65,472	F *	10		43 1/2	3
4	PS25	1315 020 4480 C273	131.0	2	42 1/2 X 13 X 7 1/2	12 0 7 1/2 1 0 13 30 0 13	1	400	992	64,970	F *	10		42 1/2	4
5	PS25	1315 020 4437 C273	132.0	2	42 1/2 X 13 X 7 1/2	12 0 7 1/2 1 0 13 30 0 13	1	400	992	65,472	F *	10		42 1/2	5
6	PS24	1315 201 1750 C273	120.0	2	42 1/2 X 13 X 7 1/2	1 0 13 30 0 13	1	400	992	64,400	F *	10	M	42 1/2	6
CARTRIDGE, 105MM															
10	R101	1315 024 1995 C454	121.0	2	36 1/2 X 12 1/2 X 7	11 0 7 2 0 12 1/2 30 0 12 1/2	1	565	1,130	60,365	F *	13 1/2		30 1/2	10
11	R102	1315 301 1774 C454	123.0	2	36 1/2 X 12 1/2 X 7	11 0 7 2 0 12 1/2 30 0 12 1/2	1	565	1,130	60,495	F *	10		30 1/2	11
12	R103	1315 020 4797 C454	123.0	2	36 1/2 X 12 1/2 X 7	11 0 7 2 0 12 1/2 30 0 12 1/2	1	554	1,100	60,142	F *	10		30 1/2	12
13	R104	1315 020 4011 C454	120.0	2	36 1/2 X 12 1/2 X 7	11 0 7 2 0 12 1/2 30 0 12 1/2	1	565	1,130	67,000	F *	10		30 1/2	13
14	R105	1315 020 4031 C454	120.0	2	37 1/2 X 12 1/2 X 7 1/2	10 0 7 1/2 2 0 12 1/2 30 0 12 1/2	1	512	1,024	61,440	F	13 1/2		37 1/2	14
15	R106	1315 020 4030 C454	120.0	2	37 1/2 X 12 1/2 X 7 1/2	10 0 7 1/2 2 0 12 1/2 30 0 12 1/2	1	512	1,024	61,440	F	13 1/2		37 1/2	15
16	R107	1315 020 4014 C454	120.0	2	37 1/2 X 12 1/2 X 7	10 0 7 1/2 2 0 12 1/2 30 0 12 1/2	1	512	1,024	61,440	F	13 1/2		37 1/2	16
17	R108	1315 020 4017 C454	120.0	2	40 1/2 X 13 X 8 1/2	9 0 8 1/2 4 0 13 30 0 8 1/2	1	400	800	67,200	F *	10		40 1/2	17
CARTRIDGE, 4.2 INCH															
21	R401	1315 020 5019 C700	69.0	2	25 1/2 X 10 1/2 X 6 1/2	12 0 8 1/2 2 0 10 1/2 42 0 8 1/2	2	1,300	2,700	94,302	SEE NOTE @	13 1/2		30 1/2	21
22	R402	1315 020 5011 C700	75.0	2	27 1/2 X 11 1/2 X 7 1/2	14 0 7 1/2 10 0 8 1/2 41 0 11 1/2	2	1,176	2,352	80,200	F	13 1/2		30 1/2	22
23	R403	1315 020 5006 C700	76.0	2	25 1/2 X 11 1/2 X 6 1/2	3 0 11 1/2 72 0 8 1/2	2	1,252	2,504	95,152	SEE NOTE @	0		30 1/2	23
24	R404	1315 020 5014 C700	75.0	2	27 1/2 X 11 1/2 X 7 1/2	14 0 7 1/2 10 0 8 1/2 41 0 11 1/2	2	1,176	2,352	89,250	F	13 1/2		30 1/2	24
25	R405	1315 020 5020 C700	80.0	2	33 1/2 X 11 1/2 X 7 1/2	14 0 7 1/2 10 0 8 1/2 41 0 11 1/2	2	1,176	2,352	101,136	F	13 1/2		30 1/2	25
120MM, PROJECTILE & PROPELLING CHARGE															
29	R120A	1315 020 4065 C805	150.0	1	40 1/2 X 15 1/2 X 10 1/2	3 0 15 1/2 3 0 15 1/2 31 0 15 1/2	2	574	574	90,692	F *	7 1/2		30 1/2	29
30	R120B	1315 344 2314 C806	143.0	1	40 1/2 X 15 1/2 X 10 1/2	3 0 15 1/2 3 0 15 1/2 31 0 15 1/2	2	574	574	82,002	F *	7 1/2		30 1/2	30
GRENADE, RIFLE															
34	S401C	1330 020 5062 H030	36.0	9	10 1/2 X 8 1/2 X 10 1/2	6 0 10 1/2 50 0 8 1/2	6	2,000	10,792	75,100	F	10 1/2		30 1/2	34
35	S401A	1330 020 5065 H030	40.4	10	10 1/2 X 8 1/2 X 10 1/2	6 0 10 1/2 50 0 8 1/2	9	1,700	17,400	70,200	F	7 1/2		30 1/2	35
36	S401B	1330 020 5063 H030	34.5	10	10 1/2 X 7 1/2 X 10 1/2	6 0 10 1/2 60 0 7 1/2	5	1,000	10,000	62,100	F	13 1/2		30 1/2	36
37	S401E	1330 020 5060 H030	40.5	10	17 1/2 X 7 1/2 X 10 1/2	6 0 10 1/2 60 0 7 1/2	5	1,920	19,200	77,700	F	10		30 1/2	37
MORTAR, 3.5"															
41	M376A	1340 020 6093 M002	54.2	3	20 1/2 X 14 1/2 X 20 1/2	9 0 8 1/2 3 0 14 1/2 32 0 14 1/2	3	1,570	4,617	63,414	S F *	10 1/2 0		30 1/2	41

LINE NO	AIC SYMBOL	FBI & DOD IDENTIFICATION CODE	PKG WT (LBS)	RDS PER PKG	DIMENSIONS OF BOX IN INCHES	BOXES WIDTH OF CAR	BOXES LENGTH OF CAR	FULL LAYERS PER CAR	TOTAL PKGS	TOTAL RDS	TOTAL WEIGHT (LBS)	CENTER DRAGING DETAIL (SEE PAGE 4) NOTE @ PAGE 4	SPACE AT CENTER (IN INCHES)	HEIGHT OF FULL LAYERS (IN INCHES)	LINE NO
CARTRIDGE, 900M															
1	PSSXA	1315 020 4402 C273	130.0	2	43 1/2 X 13 X 0	4 0 0 6 0 13	36 0 13 59 0 0	1	490	980	64,740	S F 0	18 14	43 1/2	1
2	PSSXS	1315 020 4421 C273	135.0	2	43 1/2 X 13 X 0	4 0 0 6 0 13	36 0 13 59 0 0	1	490	980	67,230	S F 0	18 14	43 1/2	2
3	PSROA	1315 020 4476 C273	132.0	2	43 1/2 X 13 X 7 1/2	5 0 13 6 0 7 1/2	64 0 7 1/2 36 0 13	1	536	1,072	70,752	S F 0	18 14	43 1/2	3
4	PSRSA	1315 020 4400 C273	131.0	2	43 1/2 X 13 X 7 1/2	5 0 13 6 0 7 1/2	64 0 7 1/2 36 0 13	1	536	1,072	70,216	S F 0	18 14	43 1/2	4
5	PSRSS	1315 020 4437 C273	132.0	2	43 1/2 X 13 X 7 1/2	5 0 13 6 0 7 1/2	64 0 7 1/2 36 0 13	1	536	1,072	70,752	S F 0	18 14	43 1/2	5
6	PSRRA	1315 301 1750 C273	130.0	2	43 1/2 X 13 X 7 1/2	5 0 13 6 0 7 1/2	64 0 7 1/2 36 0 13	1	536	1,072	69,600	S F 0	18 14	43 1/2	6
7															7
8															8
9															9
CARTRIDGE, 105MM															
10	RIU1A	1315 024 1995 C454	121.0	2	36 1/2 X 12 1/2 X 7	7 0 7 5 0 12 1/2	32 0 12 1/2 60 0 7	1	613	1,226	74,173	F 0	12 1/2 10	36 1/2	10
11	RIU2A	1315 301 1774 C454	123.0	2	36 1/2 X 12 1/2 X 7	7 0 7 5 0 12 1/2	32 0 12 1/2 60 0 7	1	613	1,226	75,399	F 0	10 10 1/2	36 1/2	11
12	RIU4A	1315 020 4797 C454	123.0	2	36 1/2 X 12 1/2 X 7	5 0 7 6 0 12 1/2	30 0 12 1/2 60 0 7	1	590	1,180	73,554	F 0	10 10 1/2	36 1/2	12
13	RAQDA	1315 020 4011 C454	120.0	2	36 1/2 X 12 1/2 X 7	7 0 7 5 0 12 1/2	32 0 12 1/2 60 0 7	1	613	1,226	73,560	F 0	10 10 1/2	36 1/2	13
14	RAQMS	1315 020 4031 C454	120.0	2	37 1/2 X 12 1/2 X 7 1/2	11 0 7 1/2 2 0 12 1/2	32 0 12 1/2 61 0 7 1/2	1	551	1,102	66,120	F 0	10 1/2 12 1/2	37 1/2	14
15	RAPXS	1315 020 4030 C454	120.0	2	37 1/2 X 12 1/2 X 7 1/2	11 0 7 1/2 2 0 12 1/2	32 0 12 1/2 61 0 7 1/2	1	551	1,102	66,120	F 0	10 1/2 12 1/2	37 1/2	15
16	RAQDA	1315 020 4014 C454	120.0	2	37 1/2 X 12 1/2 X 7	11 0 7 1/2 2 0 12 1/2	32 0 12 1/2 61 0 7 1/2	1	551	1,102	66,120	F 0	10 1/2 12 1/2	37 1/2	16
17	RASCA	1315 020 4017 C499	150.0	2	46 1/2 X 13 X 8 1/2	7 0 7 4 0 13	36 0 13 58 0 8 1/2	1	404	808	72,600	S F 0	18 14 1/2	46 1/2	17
18															18
19															19
20															20
CARTRIDGE, 4.2 INCH															
21	RAQDA	1315 020 5019 C700	69.0	2	25 1/2 X 10 1/2 X 10 1/2	10 0 1/2 4 0 10 1/2	45 0 10 1/2 72 0 6 1/2	2	1,476	2,952	101,844	SEE NOTE @	12 1/2 0	50 1/2	21
22	RAQDB	1315 020 5011 C700	75.0	2	27 1/2 X 11 1/2 X 17 1/2	12 0 7 1/2 2 0 11 1/2	62 0 11 1/2 66 0 7 1/2	2	1,272	2,544	95,400	F 0	12 1/2 7 1/2	54 1/2	22
23	RAQDB	1315 020 5006 C700	70.0	2	25 1/2 X 10 1/2 X 10 1/2	6 0 6 1/2 6 0 11 1/2	41 0 11 1/2 72 0 6 1/2	2	1,356	2,712	103,056	SEE NOTE @	12 1/2 0	50 1/2	23
24	RAQDB	1315 020 5014 C700	75.9	2	27 1/2 X 11 1/2 X 17 1/2	12 0 7 1/2 2 0 11 1/2	62 0 11 1/2 66 0 7 1/2	2	1,272	2,544	96,545	F 0	12 1/2 7 1/2	54 1/2	24
25	RAQJA	1315 020 5020 C700	66.0	2	33 1/2 X 11 1/2 X 17 1/2	12 0 7 1/2 2 0 11 1/2	62 0 11 1/2 66 0 7 1/2	2	1,272	2,544	109,392	F 0	12 1/2 7 1/2	66 1/2	25
26															26
27															27
28															28
120MM, PROJECTILE & PROPELLING CHARGE															
29	RA1PA	1315 020 4005 C005	150.0	1	40 1/2 X 15 1/2 X 10 1/2	3 0 10 1/2 5 0 15 1/2	21 0 15 1/2 54 0 10 1/2	2	626	626	20,900	F 0	12 1/2 7 1/2	80 1/2	29
30	RA10A	1315 344 2314 C006	143.0	1	40 1/2 X 15 1/2 X 10 1/2	3 0 10 1/2 5 0 15 1/2	21 0 15 1/2 54 0 10 1/2	2	626	626	89,510	F 0	12 1/2 7 1/2	80 1/2	30
31															31
32															32
33															33
GRENADE RIFLE															
34	S4B1C	1330 020 5060 H030	36.0	9	16 1/2 X 8 1/2 X 16 1/2	1 0 8 1/2 0 0 16 1/2	20 0 16 1/2 50 0 8 1/2	6	2,250	20,304	81,216	F 0	12 1/2 14 1/2	90 1/2	34
35	S4B1A	1330 020 5066 H030	40.4	10	19 1/2 X 8 1/2 X 16 1/2	1 0 8 1/2 0 0 16 1/2	20 0 16 1/2 50 0 8 1/2	5	1,000	10,000	75,252	F 0	12 1/2 7 1/2	90 1/2	35
36	S4B1B	1330 020 5063 H030	34.5	10	19 1/2 X 7 1/2 X 16 1/2	0 0 16 1/2 1 0 7 1/2	60 0 7 1/2 20 0 16 1/2	5	1,900	19,000	66,930	F 0	12 1/2 7 1/2	90 1/2	36
37	S4B1E	1330 020 5060 H030	40.5	10	17 1/2 X 7 1/2 X 16 1/2	1 0 16 1/2 0 0 7 1/2	64 0 7 1/2 20 0 16 1/2	5	2,000	20,000	84,200	F 0	14 7 1/2	80 1/2	37
38															38
39															39
40															40
ROCKET 3.5"															
41	S9J6A	1340 020 6093 H002	54.2	3	29 1/2 X 14 1/2 X 16 1/2	0 0 14 1/2 4 0 14 1/2	22 0 14 1/2 72 0 6 1/2	1	1,456	4,368	89,755	S F 0	12 1/2 9	80 1/2	41
42															42
43															43
44															44

