

## APPENDIX 95G

# UNITIZATION PROCEDURES FOR BOXED AMMUNITION AND COMPONENTS ON 4-WAY ENTRY PALLETS

MINE, AT, PRACTICE, M20, PACKED 3 PER WOODEN  
BOX, UNITIZED 12 BOXES PER 35" X 45½" PALLET;  
APPROX BOX SIZE 17¼" L X 15⅞" W X 17¼" H

PALLET UNIT DATA						
ITEMS INCLUDED		HAZARD CLASSIFICATION <sup>①</sup>				WEIGHT (LBS)
NSN	DODIC	DOT CLASS	CG CLASS	QD CLASS	COMP GROUP	
1345- 00-344-2368	K231	—	—	—	—	686

NOTICE: THIS APPENDIX CANNOT STAND ALONE BUT MUST BE USED  
IN CONJUNCTION WITH THE BASIC UNITIZATION PROCEDURES DRAWING  
19-48-4116-20PA1002

① HAZARD CLASSIFICATION DATA CONTAINED IN THE ABOVE CHART IS  
FOR GUIDANCE AND INFORMATIONAL PURPOSES ONLY. VERIFICATION  
OF THE SPECIFIED DATA SHOULD BE MADE BY CONSULTING THE MOST  
RECENT JOINT HAZARD CLASSIFICATION SYSTEM LISTING OR OTHER  
APPROVED LISTING(S).

REVISIONS				DRAFTSMAN <i>hh</i>	PROJ ENG <i>WJ</i>
				CHECKER <i>hh</i>	LOG ENGRD OFFICE <i>WJ</i>
				APPROVED, U.S. ARMY ARMAMENT, MUNITIONS AND CHEMICAL COMMAND	
				<i>Matthew</i>	<i>WJ</i>
				DRMCM - LEP	DRMCM - TMO
				APPROVED BY ORDER OF COMMANDING GENERAL, U.S. ARMY MATERIEL DEVELOPMENT AND READINESS COMMAND (DARCOM)	
				<i>John A. Spalding</i> U.S. ARMY DEFENSE AMMUNITION CENTER AND SCHOOL	
<b>U. S. ARMY DARCOM DRAWING</b>					
<b>MARCH 1984</b>					
CLASS	DIVISION	DRAWING	FILE		
19	48	4116/ 95G	20PA 1002		

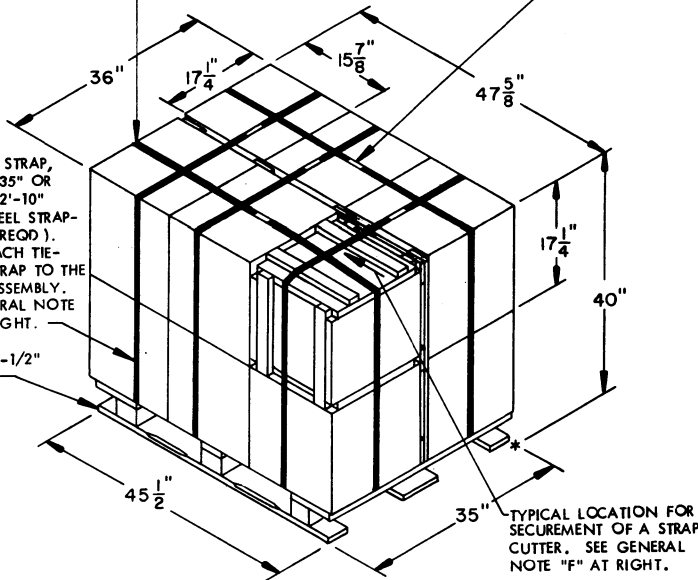
**DO NOT SCALE**

LOAD STRAP, 3/4" X .035" OR .031" X 14'-10" LONG STEEL STRAPPING (2 REQD). SEE GENERAL NOTE "C" AT RIGHT.

SEAL FOR 3/4" STRAPPING (5 REQD, 1 PER STRAP). CRIMP EACH SEAL WITH TWO PAIR OF NOTCHES.

TIEDOWN STRAP, 3/4" X .035" OR .031" X 12'-10" LONG STEEL STRAPPING (3 REQD). STAPLE EACH TIEDOWN STRAP TO THE SPACER ASSEMBLY. SEE GENERAL NOTE "D" AT RIGHT.

35" X 45-1/2" PALLET.



**PALLET UNIT**

SEE GENERAL NOTE "B" AT RIGHT.

12 BOXES OF MINES (3 PER BOX) @ 50 LBS	600 LBS (APPROX)
DUNNAGE	21 LBS
PALLET	65 LBS
<b>TOTAL WEIGHT</b>	<b>686 LBS (APPROX)</b>
<b>CUBE</b>	<b>39.7 CU FT (APPROX)</b>

**GENERAL NOTES**

- A. THIS APPENDIX CANNOT STAND ALONE BUT MUST BE USED IN CONJUNCTION WITH THE BASIC UNITIZATION PROCEDURES DRAWING 19-48-4116-20PA1002. TO PRODUCE AN APPROVED UNIT LOAD, ALL PERTINENT PROCEDURES, SPECIFICATIONS AND CRITERIA SET FORTH WITHIN THE BASIC DRAWING WILL APPLY TO THE PROCEDURES DELINEATED IN THIS APPENDIX. ANY EXCEPTIONS TO THE BASIC PROCEDURES ARE SPECIFIED IN THIS APPENDIX.
- B. DIMENSIONS, CUBE AND WEIGHT OF A PALLET UNIT WILL VARY SLIGHTLY DEPENDING UPON THE ACTUAL DIMENSIONS OF THE BOXES AND THE WEIGHT OF THE SPECIFIC ITEM BEING UNITIZED.
- C. THE LOAD STRAPS MAY BE THREADED THROUGH THE STRAP SLOTS OF A PALLET OR PRE-POSITIONED ON THE PALLET DECK PRIOR TO PLACING BOXES ON THE PALLET. LOAD STRAPS WILL BE TENSIONED AND SEALED PRIOR TO APPLICATION OF TIEDOWN STRAPS.
- D. INSTALL EACH TIEDOWN STRAP TO PASS UNDER THE TOP DECK BOARDS OF THE PALLET AND TO BE LOCATED AS SHOWN. TIEDOWN STRAPS WILL NOT BE APPLIED UNTIL THE LOAD STRAPS HAVE BEEN TENSIONED AND SEALED.
- E. THE FOLLOWING DARCOM DRAWINGS ARE APPLICABLE FOR UNLOADING AND STORAGE OF THE ITEMS COVERED BY THIS APPENDIX.
  - CARLOADING ----- DRAWING 19-48-4115-5PA1002
  - TRUCKLOADING ----- DRAWING 19-48-4117-11PA1003
  - STORAGE ----- DRAWING 19-48-4118-1-2-3-4-14-22PA1002
- F. FOR METHOD OF SECURING A STRAP CUTTER TO THE PALLET UNIT, SEE DARCOM DRAWING 19-48-4127-20P1000.
- G. IF ITEMS COVERED HEREIN ARE UNITIZED PRIOR TO ISSUANCE OF THIS APPENDIX, THE BOXES NEED NOT BE REUNITIZED SOLELY TO CONFORM TO THIS APPENDIX.
- H. THE UNITIZATION PROCEDURES DEPICTED HEREIN MAY ALSO BE USED FOR UNITIZING MINES WHEN IDENTIFIED BY DIFFERENT NATIONAL STOCK NUMBERS (NSN) THAN WHAT IS SHOWN ON THE TITLE PAGE, PROVIDED THE BOX PACK DOES NOT VARY FROM WHAT IS DELINEATED HEREIN. THE EXPLOSIVE CLASSIFICATION OF OTHER ITEMS MAY BE DIFFERENT THAN WHAT IS SHOWN.

**BILL OF MATERIAL**

LUMBER	LINEAR FEET	BOARD FEET
1" X 4"	23.41	7.80
NAILS	NO. REQD	POUNDS
6d (2")	24	0.14
PALLET, 35" X 45-1/2"	1 REQD	65 LBS
STEEL STRAPPING, 3/4"	68.17" REQD	4.87 LBS
SEAL FOR 3/4" STRAPPING	5 REQD	NIL
STAPLE, 15/16" X 3/4"	3 REQD	NIL

CENTER SUPPORT PIECE, 2" X 4" X BOX WIDTH MINUS 3" (1 REQD).

TIE PIECE, 1" X 4" X BOX WIDTH (2 REQD). NAIL TO LONGITUDINAL PIECES W/2-6d NAILS AT EACH END AND TO LATERAL PIECE W/2-6d NAILS.

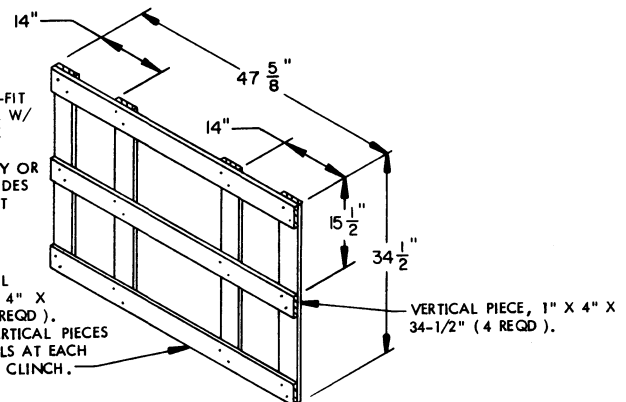
SUPPORT PIECE, 2" X 4" X CUT-TO-FIT (2 REQD). NAIL TO VERTICAL PIECE W/2-10d NAILS. NOTE: WHEN MORE THAN 4 BOXES ARE OMITTED FROM A PALLET UNIT THE FILLER ASSEMBLY OR ASSEMBLIES ON THE 35" SIDE OR SIDES OF A PALLET WILL REQUIRE SUPPORT PIECES AS SHOWN.

VERTICAL PIECE, 2" X 4" X BOX HEIGHT MINUS 3/4" (4 REQD).

LATERAL PIECE, 2" X 4" X BOX WIDTH MINUS 3" (4 REQD). NAIL TO VERTICAL PIECES W/2-10d NAILS AT EACH END.

**FILLER ASSEMBLY**  
(FOR MINUS ONE BOX)

LONGITUDINAL PIECE, 2" X 4" X BOX LENGTH (4 REQD). NAIL TO VERTICAL PIECES W/2-10d NAILS AT EACH END AND TO CENTER SUPPORT PIECE W/2-10d NAILS.



**SPACER ASSEMBLY**

(1 REQD)