

APPENDIX 82

UNITIZATION PROCEDURES FOR BOXED AMMUNITION AND COMPONENTS ON 4-WAY ENTRY PALLETS

ROCKET MOTOR, 2.75 INCH, PACKED 4 PER METAL
CONTAINER, UNITIZED 25 CONTAINERS PER 40" X 48"
PALLET; APPROX CONTAINER SIZE 5 1/2" L X 8" W X 8" H

PALLET UNIT DATA						
ITEMS INCLUDED		HAZARD CLASSIFICATION ^①				WEIGHT (LBS)
NSN	DODIC	DOT CLASS	CG CLASS	QD CLASS	COMP GROUP	
1340-00- 892-4831	J107	B	II-B	1.3	F	1,964

NOTICE: THIS APPENDIX CANNOT STAND ALONE BUT MUST
BE USED IN CONJUNCTION WITH THE BASIC UNITIZATION
PROCEDURES DRAWING 19-48-4116-20PA1002.

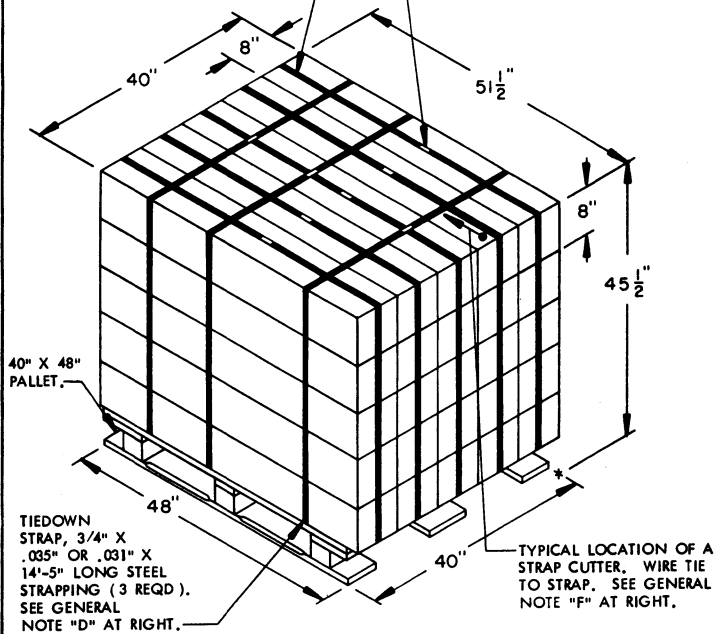
① HAZARD CLASSIFICATION DATA CONTAINED IN THE ABOVE
CHART IS FOR GUIDANCE AND INFORMATIONAL PURPOSES
ONLY. VERIFICATION OF THE SPECIFIED DATA SHOULD BE
MADE BY CONSULTING THE MOST RECENT JOINT HAZARD
CLASSIFICATION SYSTEM LISTING OR OTHER APPROVED
LISTING(S);

DO NOT SCALE

REVISIONS				DRAFTSMAN <i>RST</i>	PROJ ENG <i>RST</i>
				CHECKER <i>RST</i>	LOG ENGINE OFFICER <i>RST</i>
				<small>APPROVED, U. S. ARMY ARMAMENT, TRAINING AND CHEMICAL COMMAND</small>	
				<small>DRAWN BY <i>John L. Byrd</i></small>	<small>DRONE TWO</small>
				<small>APPROVED BY ORDER OF COMMANDING GENERAL, U. S. ARMY MATERIEL DEVELOPMENT AND READINESS COMMAND (DARCOM)</small>	
				<i>John L. Byrd</i>	
				<small>U. S. ARMY DEFENSE AMMUNITION CENTER AND SCHOOL</small>	
				U. S. ARMY DARCOM DRAWING	
				NOVEMBER 1983	
				<small>CLASS</small>	<small>DIVISION</small>
				19	48
				<small>DRAWING</small>	<small>FILE</small>
				416/82	20PA 1002

LOAD STRAP, 3/4" X .035" OR .031" X 16'-4" LONG STEEL STRAPPING (5 REQD). SEE GENERAL NOTE "C" AT RIGHT.

SEAL FOR 3/4" STRAPPING (8 REQD, 1 PER STRAP). CRIMP EACH SEAL WITH TWO PAIR OF NOTCHES.



PALLET UNIT

SEE GENERAL NOTE "B" AT RIGHT

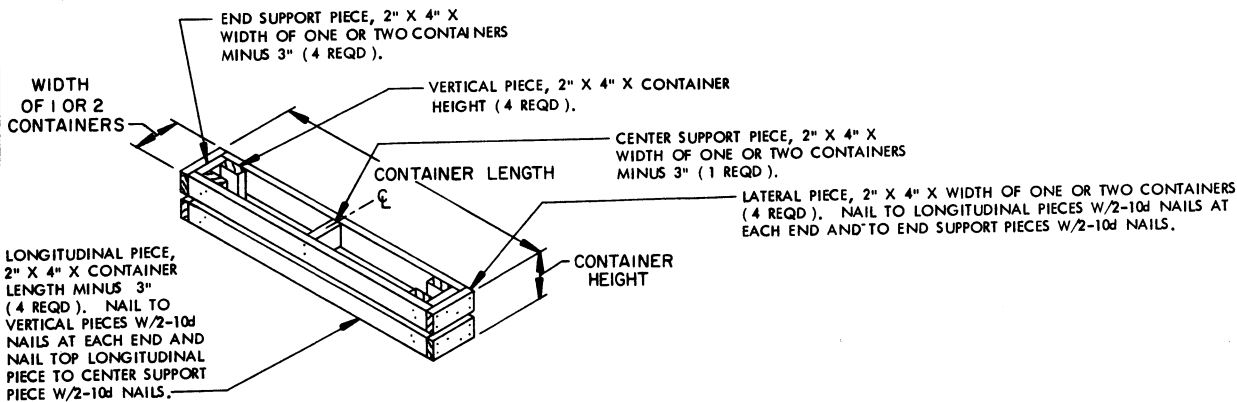
25 CONTAINERS OF ROCKET MOTOR (4 PER CONTAINER) @ 75 LBS-----	1,875 LBS (APPROX)
DUNNAGE-----	9 LBS
PALLET-----	80 LBS
TOTAL WEIGHT-----	1,964 LBS (APPROX)
CUBE-----	54.2 CU FT (APPROX)

GENERAL NOTES

- A. THIS APPENDIX CANNOT STAND ALONE BUT MUST BE USED IN CONJUNCTION WITH THE BASIC UNITIZATION PROCEDURES DRAWING 19-48-4116-20PA1002. TO PRODUCE AN APPROVED UNIT LOAD, ALL PERTINENT PROCEDURES, SPECIFICATIONS AND CRITERIA SET FORTH WITHIN THE BASIC DRAWING WILL APPLY TO THE PROCEDURES DELINEATED IN THIS APPENDIX. ANY EXCEPTIONS TO THE BASIC PROCEDURES ARE SPECIFIED IN THIS APPENDIX.
- B. DIMENSIONS, CUBE AND WEIGHT OF A PALLET UNIT WILL VARY SLIGHTLY DEPENDING UPON THE ACTUAL DIMENSIONS OF THE CONTAINERS AND THE WEIGHT OF THE SPECIFIC ITEM BEING UNITIZED.
- C. THE LOAD STRAPS WILL BE PRE-POSITIONED ON THE PALLET DECK PRIOR TO PLACING BOXES ON THE PALLET. LOAD STRAPS MUST BE TENSIONED AND SEALED PRIOR TO APPLICATION OF TIEDOWN STRAPS.
- D. INSTALL EACH TIEDOWN STRAP TO PASS UNDER THE TOP DECK BOARDS OF THE PALLET AND TO BE LOCATED AS SHOWN. TIEDOWN STRAPS WILL NOT BE APPLIED UNTIL THE LOAD STRAPS HAVE BEEN TENSIONED AND SEALED.
- E. THE FOLLOWING DARCOM DRAWINGS ARE APPLICABLE FOR OUTLOADING AND STORAGE OF THE ITEMS COVERED BY THIS APPENDIX.
 CARLOADING-----DRAWING 19-48-4115-5PA1002
 TRUCKLOADING -----DRAWING 19-48-4117-11PA1003
 STORAGE-----DRAWING 19-48-4118-1-2-3-4-14-22PA1002
- F. FOR METHOD OF SECURING A STRAP CUTTER TO THE PALLET UNIT, SEE DARCOM DRAWING 19-48-4127-20P1000.
- G. IF ITEMS COVERED HEREIN ARE UNITIZED PRIOR TO ISSUANCE OF THIS APPENDIX, THE CONTAINERS NEED NOT BE REUNITIZED SOLELY TO CONFORM TO THIS APPENDIX.
- H. THE UNITIZATION PROCEDURES DEPICTED HEREIN MAY ALSO BE USED FOR UNITIZING ROCKET MOTORS WHEN IDENTIFIED BY DIFFERENT NATIONAL STOCK NUMBERS (NSN) THAN WHAT IS SHOWN ON THE TITLE PAGE, PROVIDED THE CONTAINER PACK DOES NOT VARY FROM WHAT IS DELINEATED HEREIN. THE EXPLOSIVE CLASSIFICATION OF OTHER ITEMS MAY BE DIFFERENT THAN WHAT IS SHOWN.
- J. WHEN THE UNIT LOAD DEPICTED AT LEFT IS TO BE USED FOR UNITIZING MARINE CORPS AMMUNITION, ONE LAYER OF BOXES MUST BE OMITTED, TIEDOWN STRAP LENGTHS MUST BE DECREASED TO 13'-10", AND LOAD STRAP LENGTHS MUST BE DECREASED TO 15'-0". THIS WILL RESULT IN AN OVERALL UNIT HEIGHT OF 37'-1/2", A GROSS UNIT WEIGHT OF 1,589 POUNDS, AND A UNIT CUBE OF 44.7 CUBIC FEET. ADDITIONALLY, THE UNIT LOAD MAY BE MODIFIED AS DESCRIBED WHEN BEING SHIPPED BY MILVAN OR COMMERCIAL INTERMODAL FREIGHT CONTAINER, CONVENTIONAL VAN TRAILER OR CONVENTIONAL OR HIGH-CAPACITY BOXCAR. THE DETERMINATION TO REDUCE THE LOAD BY A LAYER FOR TRANSPORTATION WILL BE MADE BY THE RESPONSIBLE COMMAND AND WILL BE BASED UPON ECONOMICS OF TRANSPORTATION AND HANDLING.

BILL OF MATERIAL

PALLET, 40" X 48"-----	1 REQD	80 LBS
STEEL STRAPPING, 3/4"-----	124.92' REQD	8.92 LBS
SEAL FOR 3/4" STRAPPING-----	8 REQD	NIL



FILLER ASSEMBLY

(FOR MINUS ONE OR TWO CONTAINERS)