

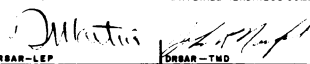
APPENDIX 80A

UNITIZATION PROCEDURES FOR BOXED AMMUNITION AND COMPONENTS ON 4-WAY ENTRY PALLETS

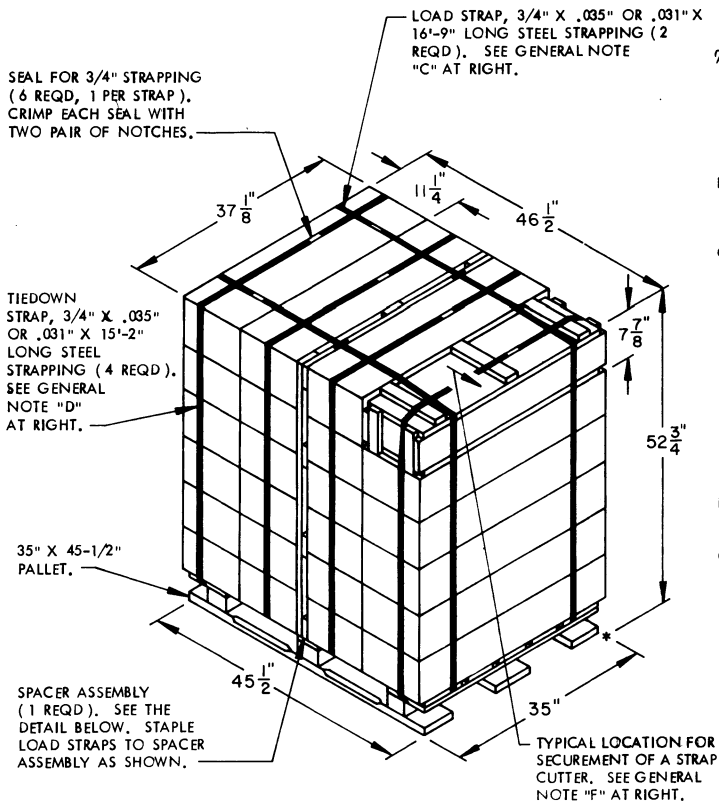
ROCKET, 2.75 INCH, WITH WARHEAD, PACKED 3 OR
4 PER WOODEN BOX, UNITIZED 24 BOXES PER 35"
X 45 $\frac{1}{2}$ " PALLET; APPROX BOX SIZE 37 $\frac{1}{8}$ " L X
11 $\frac{1}{4}$ " W X 7 $\frac{7}{8}$ " H

PALLET UNIT DATA						
ITEMS INCLUDED		HAZARD CLASSIFICATION				WEIGHT (LBS)
NSN	DODIC	DOT CLASS	CG CLASS	QD CLASS	COMP GROUP	
1340-						
00-935-6134	H534	A	IV	1.1	E	3,352
00-935-9256	H490	A	IV	1.1	E	3,304

NOTICE: THIS APPENDIX CANNOT STAND ALONE BUT MUST BE USED IN
CONJUNCTION WITH THE BASIC UNITIZATION PROCEDURES DRAWING
19-48-4116-20PA1002.

REVISIONS				DRAFTSMAN <i>BR</i>	PROJ ENG <i>WR/LNW</i>
				CHECKER <i>GRS</i>	LOG ENGRG OFFICE <i>W + Ernest</i>
				APPROVED, U. S. ARMY ARMAMENT MATERIEL READINESS COMMAND	
				 DRBAR-LEP DRBAR-TMD APPROVED BY ORDER OF COMMANDING GENERAL, U. S. ARMY MATERIEL DEVELOPMENT AND READINESS COMMAND (DARCOM) <i>John L. Byrnes</i> U. S. ARMY DEFENSE AMMUNITION CENTER AND SCHOOL	
				U. S. ARMY DARCOM DRAWING	
				MARCH 1983	
				CLASS	DIVISION
				DRAWING	FILE
				19	48
				4116/ 80A	20PA 1002

DO NOT SCALE



PALLET UNIT

SEE GENERAL NOTE "B" AT RIGHT.

24 BOXES OF 2.75" ROCKETS @ 141 LBS -----	3,384 LBS (APPROX)
DUNNAGE -----	23 LBS
PALLET -----	65 LBS

TOTAL WEIGHT ----- 3,472 LBS (APPROX)
 CUBE ----- 52.7 CUBIC FEET (APPROX)

BILL OF MATERIAL

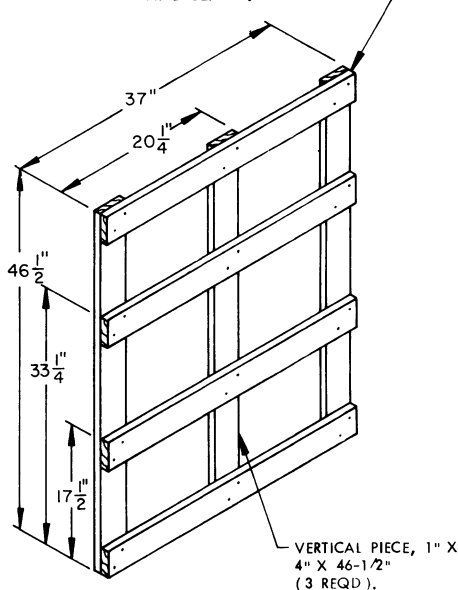
LUMBER	LINEAR FEET	BOARD FEET
1" X 4"	23.96	7.99
NAILS	NO. REQD	POUNDS
6d (2")	24	0.14

PALLET, 35" X 45-1/2" -----	1 REQD -----	65 LBS
STEEL STRAPPING, 3/4" -----	94.17' REQD -----	6.73 LBS
SEAL FOR 3/4" STRAPPING -----	6 REQD -----	NIL
STAPLE -----	2 REQD -----	NIL

GENERAL NOTES

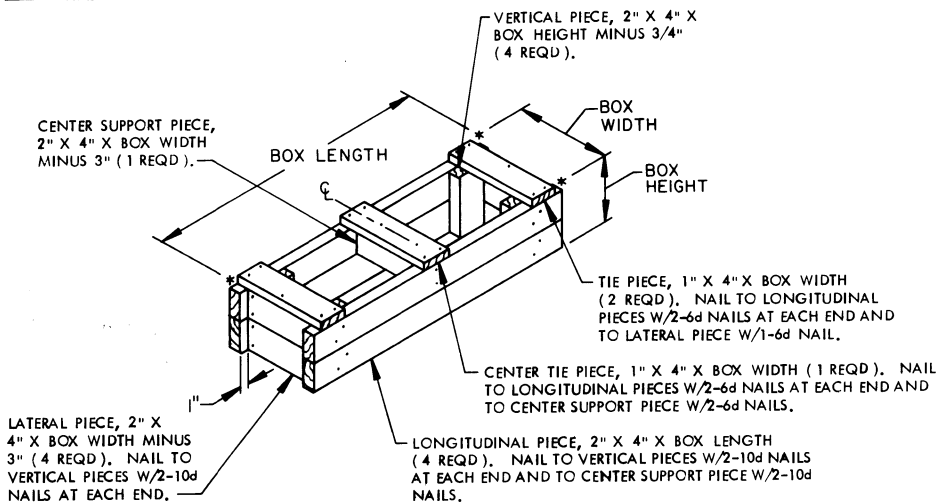
- A. THIS APPENDX CANNOT STAND ALONE BUT MUST BE USED IN CONJUNCTION WITH THE BASIC UNITIZATION PROCEDURES DRAWING 19-48-4116-20PA1002. TO PRODUCE AN APPROVED UNIT LOAD, ALL PERTINENT PROCEDURES, SPECIFICATIONS AND CRITERIA SET FORTH WITHIN THE BASIC DRAWING WILL APPLY TO THE PROCEDURES DELINEATED IN THIS APPENDX. ANY EXCEPTIONS TO THE BASIC PROCEDURES ARE SPECIFIED IN THIS APPENDX.
- B. DIMENSIONS, CUBE AND WEIGHT OF A PALLET UNIT WILL VARY SLIGHTLY DEPENDING UPON THE ACTUAL DIMENSIONS OF THE BOXES AND THE WEIGHT OF THE SPECIFIC ITEM BEING UNITIZED.
- C. THE LOAD STRAPS WILL BE THREADED THROUGH THE STRAP SLOTS OF A PALLET. LOAD STRAPS MUST BE TENSIONED AND SEALED PRIOR TO APPLICATION OF TIEDOWN STRAPS.
- D. INSTALL EACH TIEDOWN STRAP TO PASS UNDER THE DECK/STRINGER BOARDS OF THE PALLET AND TO BE LOCATED AS SHOWN. TIEDOWN STRAPS WILL NOT BE APPLIED UNTIL THE LOAD STRAPS HAVE BEEN TENSIONED AND SEALED.
- E. THE FOLLOWING DARCOM DRAWINGS ARE APPLICABLE FOR OUTLOADING AND STORAGE OF THE ITEMS COVERED BY THIS APPENDX.
 CARLOADING ----- DRAWING 19-48-4115-5PA1002
 TRUCKLOADING ----- DRAWING 19-48-4117-11PA1003
 STORAGE ----- DRAWING 19-48-4118-1-2-3-4-14-22PA1002
- F. FOR METHOD OF SECURING A STRAP CUTTER TO THE PALLET UNIT, SEE DARCOM DRAWING 19-48-4127-20P1000.
- G. IF ITEMS COVERED HEREIN ARE UNITIZED PRIOR TO ISSUANCE OF THIS APPENDX, THE BOXES NEED NOT BE REUNITIZED SOLELY TO CONFORM TO THIS APPENDX.
- H. THE UNITIZATION PROCEDURES DEPICTED HEREIN MAY ALSO BE USED FOR UNITIZING 2.75" ROCKETS WHEN IDENTIFIED BY DIFFERENT NATIONAL STOCK NUMBERS (NSN) THAN WHAT IS SHOWN ON THE TITLE PAGE, PROVIDED THE BOX PACK DOES NOT VARY FROM WHAT IS DELINEATED HEREIN. THE EXPLOSIVE CLASSIFICATION OF OTHER ITEMS MAY BE DIFFERENT THAN WHAT IS SHOWN.
- J. WHEN THE UNIT LOAD DEPICTED AT LEFT IS TO BE USED FOR UNITIZING MARINE CORPS AMMUNITION, TWO LAYERS OF BOXES MUST BE OMITTED, TIEDOWN STRAP LENGTHS MUST BE DECREASED TO 12'-7", AND LOAD STRAP LENGTHS MUST BE DECREASED TO 14'-1", AND THE SPACER ASSEMBLY MUST BE MODIFIED. MODIFICATIONS REQUIRED FOR THE SPACER ASSEMBLY ARE ELIMINATING ONE HORIZONTAL PIECE, LOCATING THE TOP EDGE OF THE CENTER HORIZONTAL PIECE AT 17-1/2", AND CHANGING VERTICAL PIECE LENGTH TO 30-3/4". THIS WILL RESULT IN AN OVERALL UNIT HEIGHT OF 37", A GROSS UNIT WEIGHT OF 2,338 POUNDS, AND A UNIT CUBE OF 37.0 CUBIC FEET. ADDITIONALLY, THE UNIT LOAD MAY BE MODIFIED AS DESCRIBED WHEN BEING SHIPPED BY MILVAN OR COMMERCIAL INTERMODAL FREIGHT CONTAINER, CONVENTIONAL VAN TRAILER OR CONVENTIONAL OR HIGH-CAPACITY BOXCAR. THE DETERMINATION TO REDUCE THE LOAD BY TWO LAYERS FOR TRANSPORTATION WILL BE MADE BY THE RESPONSIBLE COMMAND AND WILL BE BASED UPON ECONOMICS OF TRANSPORTATION AND HANDLING.

HORIZONTAL PIECE, 1" X 4" X 37" (4 REQD). NAIL TO VERTICAL PIECES W/2-6d NAILS AT EACH JOINT AND CLINCH.



SPACER ASSEMBLY

(1 REQD)



FILLER ASSEMBLY

(FOR MINUS ONE BOX)