

APPENDIX 61

UNITIZATION PROCEDURES FOR BOXED AMMUNITION AND COMPONENTS ON 4-WAY ENTRY PALLETS

FUZE, PROXIMITY, PACKED 10 PER PLYWOOD BOX,
UNITIZED 6 BOXES PER 40" X 48" PALLET; APPROX
BOX SIZE $41\frac{1}{8}$ " L X $16\frac{3}{4}$ " W X $20\frac{3}{8}$ " H

| PALLET UNIT DATA | | | | | | |
|------------------|-------|-----------------------|----------|----------|------------|-----------------|
| ITEMS INCLUDED | | HAZARD CLASSIFICATION | | | | WEIGHT (LBS) |
| NSN | DODIC | DOT CLASS | CG CLASS | QD CLASS | COMP GROUP | |
| 1325-00-603-9814 | F730 | C | I | 1.4 | B | 902 |

NOTICE: THIS APPENDIX CANNOT STAND ALONE BUT MUST BE USED IN CONJUNCTION WITH THE BASIC UNITIZATION PROCEDURES DRAWING 19-48-4116-20PA1002.

| REVISIONS | | | DRAWN BY <i>W. J. Mink</i> | FILED BY <i>W. J. Mink</i> |
|--|--|--|------------------------------------|--------------------------------------|
| | | | <i>RS14</i> | <i>W. J. Mink</i> |
| APPROVED, U. S. ARMY ARMAMENT MATERIEL READINESS COMMAND | | | | |
| | | | <i>W. H. Benton</i> DSRAN - LEP | <i>John P. Knight</i> DSRAN - TMO |
| APPROVED BY ORDER OF COMMANDING GENERAL, U. S. ARMY MATERIEL DEVELOPMENT AND READINESS COMMAND (DARCOM) | | | | |
| <i>David E. Brown</i> U. S. ARMY DEFENSE REGULATION CENTER AND SCHOOL | | | | |
| U. S. ARMY DARCOM DRAWING | | | | |
| MAY 1981 | | | | |
| | | | CLASS | DIVISION |
| | | | 19 | 48 |
| | | | DRAWING | FILE |
| | | | 4116/ 61 | 20PA 1002 |

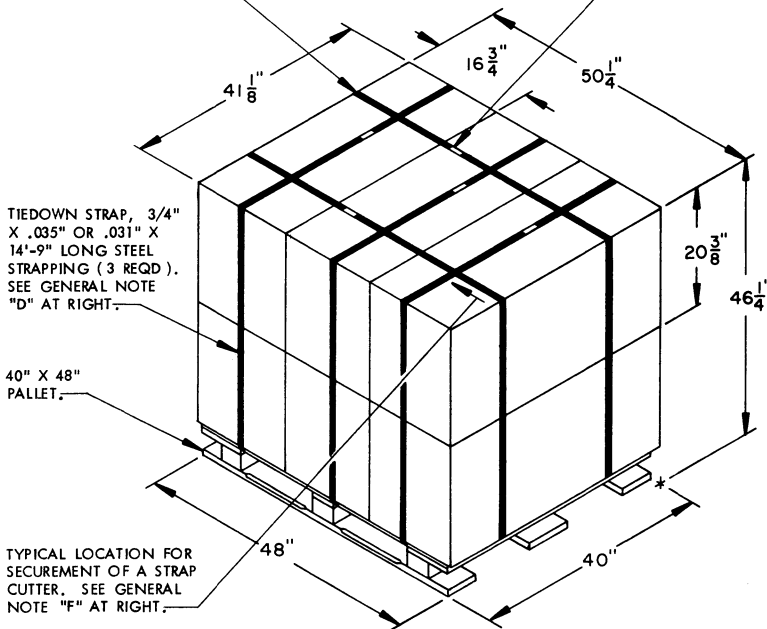
DO NOT SCALE

LOAD STRAP, 3/4" X .035" OR .031" X 16'-3" LONG STEEL STRAPPING (2 REQD). SEE GENERAL NOTE "C" AT RIGHT.

SEAL FOR 3/4" STRAPPING (5 REQD, 1 PER STRAP). CRIMP EACH SEAL WITH TWO PAIR OF NOTCHES.

GENERAL NOTES

- A. THIS APPENDIX CANNOT STAND ALONE BUT MUST BE USED IN CONJUNCTION WITH THE BASIC UNITIZATION PROCEDURES DRAWING 19-48-4116-20PA1002. TO PRODUCE AN APPROVED UNIT LOAD, ALL PERTINENT PROCEDURES, SPECIFICATIONS AND CRITERIA SET FORTH WITHIN THE BASIC DRAWING WILL APPLY TO THE PROCEDURES DELINEATED IN THIS APPENDIX. ANY EXCEPTIONS TO THE BASIC PROCEDURES ARE SPECIFIED IN THIS APPENDIX.
- B. DIMENSIONS, CUBE AND WEIGHT OF A PALLET UNIT WILL VARY SLIGHTLY DEPENDING UPON THE ACTUAL DIMENSIONS OF THE BOXES AND THE WEIGHT OF THE SPECIFIC ITEM BEING UNITIZED.
- C. THE LOAD STRAPS MAY BE THREADED THROUGH THE STRAP SLOTS OF A PALLET OR PRE-POSITIONED ON THE PALLET DECK PRIOR TO PLACING BOXES ON THE PALLET. LOAD STRAPS MUST BE TENSIONED AND SEALED PRIOR TO APPLICATION OF TIEDOWN STRAPS.
- D. INSTALL EACH TIEDOWN STRAP TO PASS UNDER THE TOP DECK BOARDS OF THE PALLET AND TO BE LOCATED AS SHOWN. TIEDOWN STRAPS WILL NOT BE APPLIED UNTIL THE LOAD STRAPS HAVE BEEN TENSIONED AND SEALED.
- E. THE FOLLOWING DARCOM DRAWINGS ARE APPLICABLE FOR OUTLOADING AND STORAGE OF THE ITEMS COVERED BY THIS APPENDIX.
 - CARLOADING ----- DRAWING 19-48-4115-5PA1002
 - TRUCKLOADING ----- DRAWING 19-48-4117-11PA1003
 - STORAGE ----- DRAWING 19-48-4118-1-2-3-4-14-22PA1002
- F. FOR METHOD OF SECURING A STRAP CUTTER TO THE PALLET UNIT, SEE DARCOM DRAWING 19-48-4127-20P1000.
- G. IF ITEMS COVERED HEREIN ARE UNITIZED PRIOR TO ISSUANCE OF THIS APPENDIX, THE BOXES NEED NOT BE REUNITIZED SOLELY TO CONFORM TO THIS APPENDIX.
- H. THE UNITIZATION PROCEDURES DEPICTED HEREIN MAY ALSO BE USED FOR UNITIZING FUZES WITH BOOSTERS WHEN IDENTIFIED BY DIFFERENT NATIONAL STOCK NUMBERS (NSN) THAN WHAT IS SHOWN ON THE TITLE PAGE, PROVIDED THE BOX PACK DOES NOT VARY FROM WHAT IS DELINEATED HEREIN. THE EXPLOSIVE CLASSIFICATION OF OTHER ITEMS MAY BE DIFFERENT THAN WHAT IS SHOWN.



PALLET UNIT

SEE GENERAL NOTE "B" AT RIGHT.

| | |
|---|--------------------|
| 6 BOXES OF FUZE WITH BOOSTER (10 PER BOX) @ 136 LBS ----- | 816 LBS (APPROX) |
| DUNNAGE ----- | 6 LBS |
| PALLET ----- | 80 LBS |

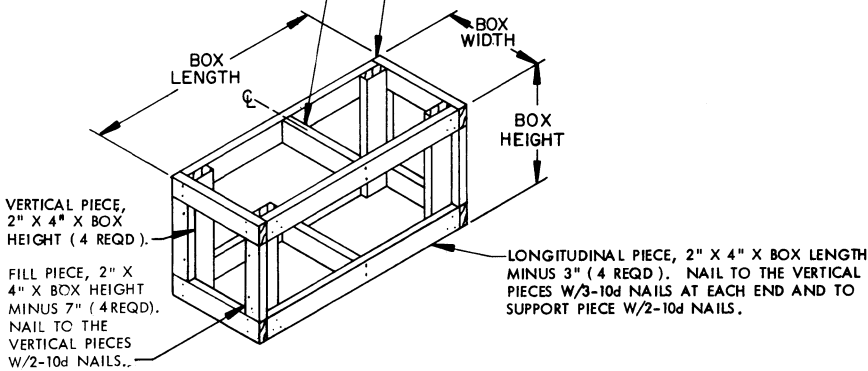
| | |
|--------------------|-----------------------|
| TOTAL WEIGHT ----- | 902 LBS (APPROX) |
| CUBE ----- | 55.3 CU FT (APPROX) |

BILL OF MATERIAL

| | | |
|-------------------------------|-------------------|----------|
| PALLET, 40" X 48" ----- | 1 REQD ----- | 80 LBS |
| STEEL STRAPPING, 3/4" ----- | 76.75' REQD ----- | 5.48 LBS |
| SEAL FOR 3/4" STRAPPING ----- | 5 REQD ----- | NIL |

SUPPORT PIECE, 2" X 4" X BOX WIDTH MINUS 3" (2 REQD).

LATERAL PIECE, 2" X 4" X BOX WIDTH (4 REQD). NAIL TO THE VERTICAL PIECES W/2-10d NAILS AT EACH END.



FILLER ASSEMBLY
(FOR MINUS ONE BOX)