

# APPENDIX 49A

## UNITIZATION PROCEDURES FOR BOXED AMMUNITION AND COMPONENTS ON 4-WAY ENTRY PALLETS

BURSTER, PROJECTILE, PACKED 100 PER WOODEN  
BOX, UNITIZED 35 BOXES PER 35" X 45 $\frac{1}{2}$ " PALLET;  
APPROX BOX SIZE 16 $\frac{3}{4}$ " L X 9 $\frac{5}{8}$ " W X 11 $\frac{25}{32}$ " H


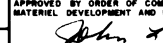

PALLET UNIT DATA						
ITEMS INCLUDED		HAZARD CLASSIFICATION				WEIGHT ( LBS )
NSN	DODIC	DOT CLASS	CG CLASS	QD CLASS	COMP GROUP	
1315- 00-403-5603	C751	A	X-A	1.1	D	2,435
00-459-7295	C751	A	X-A	1.1	D	2,435

NOTICE: THIS APPENDIX CANNOT STAND ALONE BUT MUST  
BE USED IN CONJUNCTION WITH THE BASIC UNITIZATION  
PROCEDURES DRAWING 19-48-4116-20PA1002.

### REVISION

REVISION NO. 1, DATED OCTOBER 1982, CONSISTS OF:

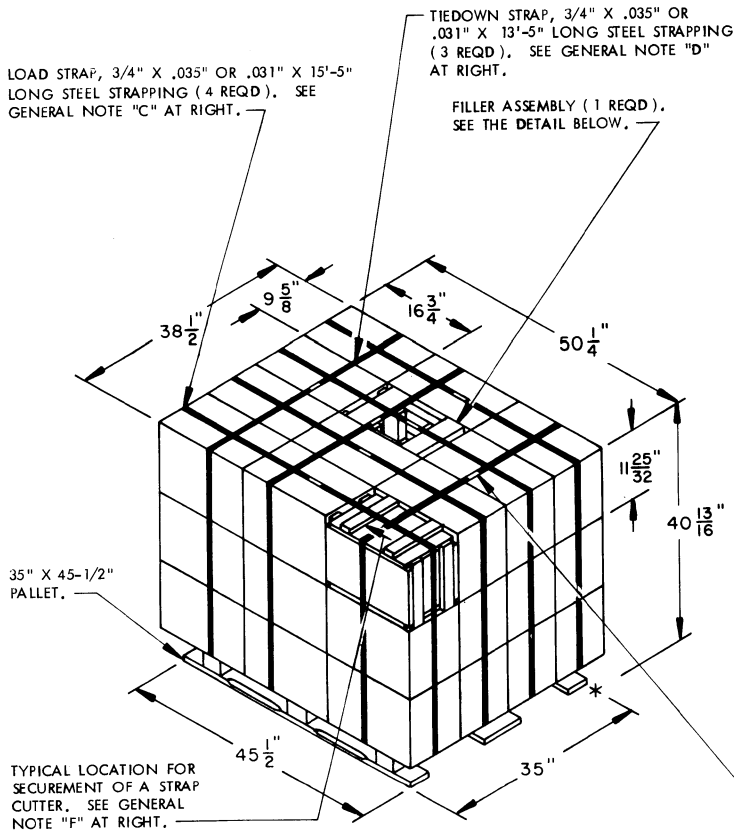
1. CHANGING BOX DIMENSIONS.
2. CHANGING UNITIZATION PROCEDURES TO CONFORM TO 1. ABOVE.

REVISIONS				DRAFTSMAN P.B.	PROJ ENG WRF/N.J.
NO.	DATE	BY	REASON	CHECKER RSH	LOG ENGINE OFFICE K. Williams
1	OCT 82	MWD DTW	Change dimensions DARSAR-LEP	MWD	K. Williams
				APPROVED, U.S. ARMY ARMAMENT MATERIEL READINESS COMMAND	
				 J. H. Benton DARSAR-TMD	
				 J. S. Reynolds DARSAR-MAD	
				APPROVED BY ORDER OF COMMANDING GENERAL, U.S. ARMY MATERIEL DEVELOPMENT AND READINESS COMMAND (DARCOM)	
				 J. S. Reynolds U.S. ARMY DEFENSE AMMUNITION CENTER AND SCHOOL	
				U.S. ARMY DARCOM DRAWING	
				JANUARY 1980	
				CLASS	DIVISION
				19	48
				DRAWING	FILE
				4116/ 49A	20PA 1002

**DO NOT SCALE**

**GENERAL NOTES**

- A. THIS APPENDIX CANNOT STAND ALONE BUT MUST BE USED IN CONJUNCTION WITH THE BASIC UNITIZATION PROCEDURES DRAWING 19-48-4116-20PA1002. TO PRODUCE AN APPROVED UNIT LOAD, ALL PERTINENT PROCEDURES, SPECIFICATIONS AND CRITERIA SET FORTH WITHIN THE BASIC DRAWING WILL APPLY TO THE PROCEDURES DELINEATED IN THIS APPENDIX. ANY EXCEPTIONS TO THE BASIC PROCEDURES ARE SPECIFIED IN THIS APPENDIX.
- B. DIMENSIONS, CUBE AND WEIGHT OF A PALLET UNIT WILL VARY SLIGHTLY DEPENDING UPON THE ACTUAL DIMENSIONS OF THE BOXES AND THE WEIGHT OF THE SPECIFIC ITEM BEING UNITIZED.
- C. THE LOAD STRAPS WILL BE PRE-POSITIONED ON THE PALLET DECK (NOT THRU STRAP SLOTS) PRIOR TO PLACING BOXES ON THE PALLET.
- D. INSTALL EACH TIEDOWN STRAP TO PASS UNDER THE TOP DECK BOARDS OF THE PALLET AND TO BE LOCATED AS SHOWN. TIEDOWN STRAPS WILL BE TENSIONED AND SEALED PRIOR TO LOAD STRAPS.
- E. THE FOLLOWING DARCOM DRAWINGS ARE APPLICABLE FOR OUTLOADING AND STORAGE OF THE ITEMS COVERED BY THIS APPENDIX.  
 CARLOADING ----- DRAWING 19-48-4115-5PA1002  
 TRUCKLOADING --- DRAWING 19-48-4117-11PA1003  
 STORAGE ----- DRAWING 19-48-4118-1-2-3-4-14-22PA1002
- F. FOR METHOD OF SECURING A STRAP CUTTER TO THE PALLET UNIT, SEE DARCOM DRAWING 19-48-4127-20P1000.
- G. IF ITEMS COVERED HEREIN ARE UNITIZED PRIOR TO ISSUANCE OF THIS APPENDIX, THE BOXES NEED NOT BE REUNITIZED SOLELY TO CONFORM TO THIS APPENDIX.
- H. THE UNITIZATION PROCEDURES DEPICTED HEREIN MAY ALSO BE USED FOR UNITIZING PROJECTILE BURSTERS WHEN IDENTIFIED BY DIFFERENT NATIONAL STOCK NUMBERS (NSN) THAN WHAT IS SHOWN ON THE TITLE PAGE, PROVIDED THE BOX PACK DOES NOT VARY FROM WHAT IS DELINEATED HEREIN. THE EXPLOSIVE CLASSIFICATION OF OTHER ITEMS MAY BE DIFFERENT THAN WHAT IS SHOWN.



SEAL FOR 3/4\"/>

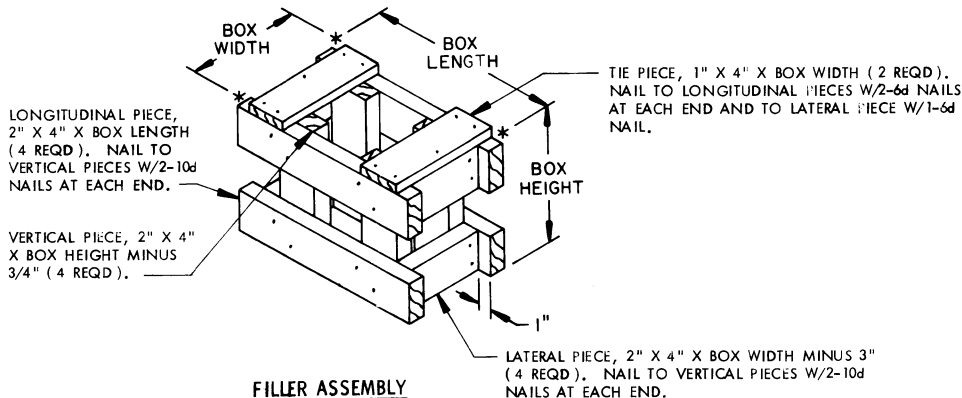
**PALLET UNIT**

(SEE GENERAL NOTE "B" AT RIGHT.)

35 BOXES OF BURSTER PROJECTILES (100 PER BOX) @ 67 LBS -----	2,345 LBS (APPROX)
DUNNAGE -----	25 LBS
PALLET -----	65 LBS
<b>TOTAL WEIGHT -----</b>	<b>2,435 LBS (APPROX)</b>
<b>CUBE -----</b>	<b>45.7 CU FT (APPROX)</b>

**BILL OF MATERIAL**

LUMBER	LINEAR FEET	BOARD FEET
1" X 4"	1.60	0.53
2" X 4"	11.46	7.64
NAILS	NO. REQD	POUNDS
6d (2")	10	0.06
10d (3")	32	0.49
PALLET, 35" X 45-1/2" -----	1 REQD -----	65 LBS
STEEL STRAPPING, 3/4" -----	101.92' REQD -----	7.28 LBS
SEAL FOR 3/4" STRAPPING -----	7 REQD -----	NIL



**FILLER ASSEMBLY**

(FOR MINUS ONE BOX)