

APPENDIX 45M

UNITIZATION PROCEDURES FOR BOXED AMMUNITION AND COMPONENTS ON 4-WAY ENTRY PALLETS

CARTRIDGE, 105MM, PACKED 2 PER WOODEN BOX,
UNITIZED 15 BOXES PER 35" X 45 $\frac{1}{2}$ " PALLET; APPROX
BOX SIZE 46 $\frac{3}{4}$ " L X 14 $\frac{1}{4}$ " W X 9" H

PALLET UNIT DATA						
ITEMS INCLUDED		HAZARD CLASSIFICATION				WEIGHT (LBS)
NSN	DODIC	DOT CLASS	CG CLASS	QD CLASS	COMP GROUP	
1315- 00-143-6930	C519	A	IV	(12)1.2	E	2,182
00-995-6154	C519	A	IV	(12)1.2	E	2,182

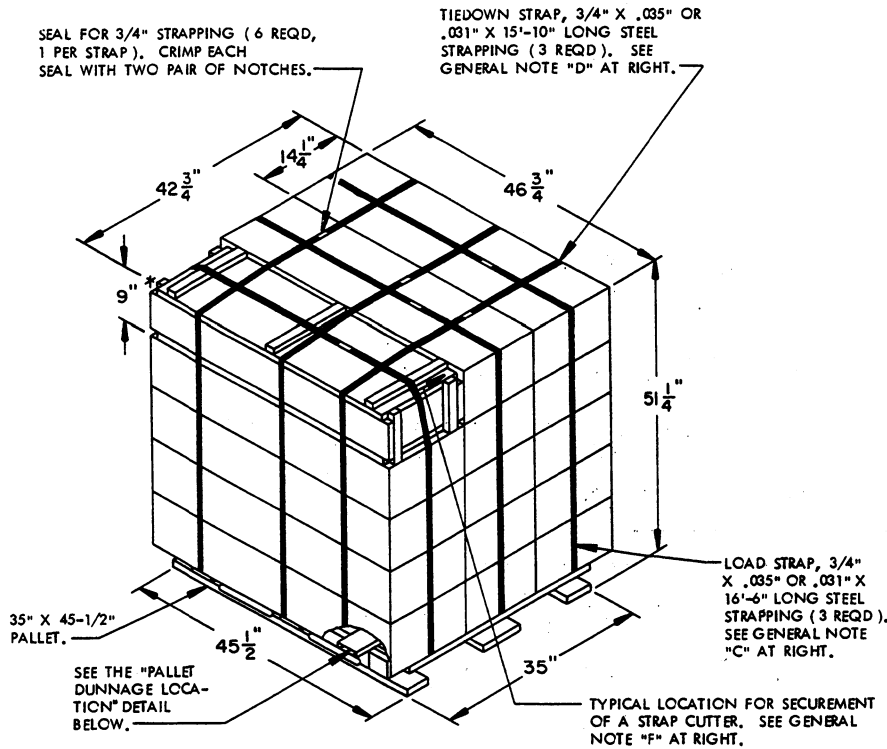
NOTICE: THIS APPENDIX CANNOT STAND ALONE BUT MUST
BE USED IN CONJUNCTION WITH THE BASIC UNITIZATION
PROCEDURES DRAWING 19-48-4116-20PA1002.

REVISIONS				DESIGNED <i>B. J. [Signature]</i>	FIELD NO. <i>[Signature]</i>
				CHECKED <i>RSK</i>	JOB NUMBER OFFICE <i>[Signature]</i>
APPROVED, U. S. ARMY ARMAMENT MATERIEL READINESS COMMAND					
<div style="display: flex; justify-content: space-between;"> <div style="text-align: center;"><i>[Signature]</i> DRAG - LEP</div> <div style="text-align: center;"><i>[Signature]</i> DRAG - TSD</div> </div>					
APPROVED BY ORDER OF COMMANDER GENERAL, U. S. ARMY MATERIEL DEVELOPMENT AND READINESS COMMAND					
U. S. ARMY DEFENSE AMMUNITION CENTER AND SCHOOL					
U. S. ARMY DARCOM DRAWING					
MARCH 1983					
CLASS	DIVISION	DRAWING	FILE		
19	48	4116/ 45M	20PA 1002		

DO NOT SCALE

GENERAL NOTES

- A. THIS APPENDIX CANNOT STAND ALONE BUT MUST BE USED IN CONJUNCTION WITH THE BASIC INITIALIZATION PROCEDURES DRAWING 19-48-4116-20PA1002. TO PRODUCE AN APPROVED UNIT LOAD, ALL PERTINENT PROCEDURES, SPECIFICATIONS AND CRITERIA SET FORTH WITHIN THE BASIC DRAWING WILL APPLY TO THE PROCEDURES DELINEATED IN THIS APPENDIX. ANY EXCEPTIONS TO THE BASIC PROCEDURES ARE SPECIFIED IN THIS APPENDIX.
- B. DIMENSIONS, CUBE AND WEIGHT OF A PALLET UNIT WILL VARY SLIGHTLY DEPENDING UPON THE ACTUAL DIMENSIONS OF THE BOXES AND THE WEIGHT OF THE SPECIFIC ITEM BEING INITIALIZED.
- C. THE LOAD STRAPS MAY BE INSTALLED THROUGH THE STRAP SLOTS OF A PALLET OR PRE-POSITIONED ON THE PALLET DECK DUNNAGE PRIOR TO PLACING THE BOXES ON THE PALLET.
- D. INSTALL EACH TIEDOWN STRAP TO PASS UNDER THE TOP DECK BOARDS OF THE PALLET AND TO BE LOCATED ON THE BOXES AS SHOWN AND CENTERED ON THE DECK DUNNAGE BOARDS. TIEDOWN STRAPS WILL BE TENSIONED AND SEALED PRIOR TO LOAD STRAPS.
- E. THE FOLLOWING DARCOM DRAWINGS ARE APPLICABLE FOR UNLOADING AND STORAGE OF THE ITEMS COVERED BY THIS APPENDIX.
 - CARLOADING ----- DRAWING 19-48-4115-5PA1002
 - TRUCKLOADING ----- DRAWING 19-48-4117-11PA1003
 - STORAGE ----- DRAWING 19-48-4118-1-2-3-4-14-22PA1002
- F. FOR METHOD OF SECURING A STRAP CUTTER TO THE PALLET UNIT, SEE DARCOM DRAWING 19-48-4127-20P1000.
- G. IF ITEMS COVERED HEREIN ARE INITIALIZED PRIOR TO ISSUANCE OF THIS APPENDIX, THE BOXES NEED NOT BE REINITIALIZED SOLELY TO CONFORM TO THIS APPENDIX.
- H. THE INITIALIZATION PROCEDURES DEPICTED HEREIN MAY ALSO BE USED FOR INITIALIZING 105MM CARTRIDGES WHEN IDENTIFIED BY DIFFERENT NATIONAL STOCK NUMBERS (NSN) THAN WHAT IS SHOWN ON THE TITLE PAGE, PROVIDED THE BOX PACK DOES NOT VARY FROM WHAT IS DELINEATED HEREIN. THE EXPLOSIVES CLASSIFICATION OF OTHER ITEMS MAY BE DIFFERENT THAN WHAT IS SHOWN.
- J. WHEN THE UNIT LOAD DEPICTED AT LEFT IS TO BE USED FOR INITIALIZING MARINE CORPS AMMUNITION, ONE LAYER OF BOXES MUST BE OMITTED, TIEDOWN STRAP LENGTHS MUST BE DECREASED TO 14'-4", AND LOAD STRAP LENGTHS MUST BE DECREASED TO 16'-6". THIS WILL RESULT IN OVERALL UNIT HEIGHT OF 42'-1/4", A GROSS UNIT WEIGHT OF 1,761 LBS, AND A UNIT CUBE OF 48.9 CUBIC FEET. ADDITIONALLY, THE UNIT LOAD MAY BE MODIFIED AS DESCRIBED WHEN BEING SHIPPED BY MILVAN OR COMMERCIAL INTERMODAL FREIGHT CONTAINER, CONVENTIONAL VAN TRAILER OR CONVENTIONAL OR HIGH-CAPACITY BOXCAR. THE DETERMINATION TO REDUCE THE LOAD BY A LAYER FOR TRANSPORTATION WILL BE MADE BY THE RESPONSIBLE COMMAND AND WILL BE BASED UPON ECONOMICS OF TRANSPORTATION AND HANDLING.



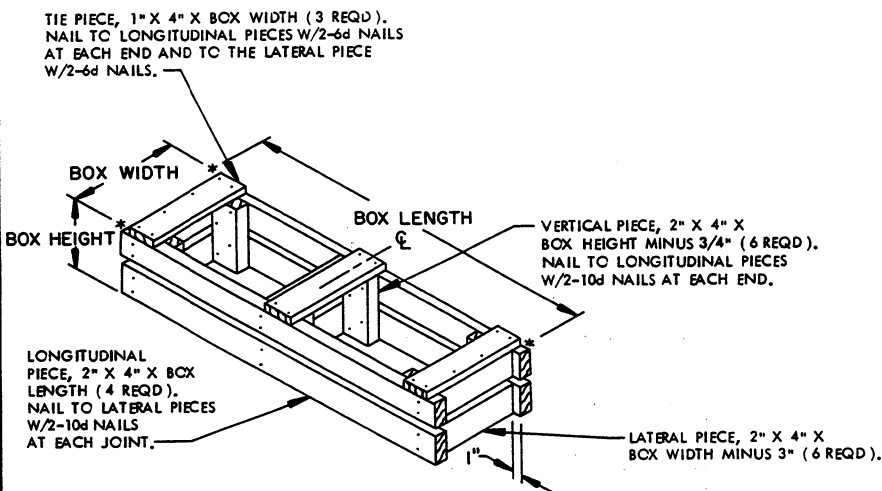
PALLET UNIT

SEE GENERAL NOTE "B" AT RIGHT.

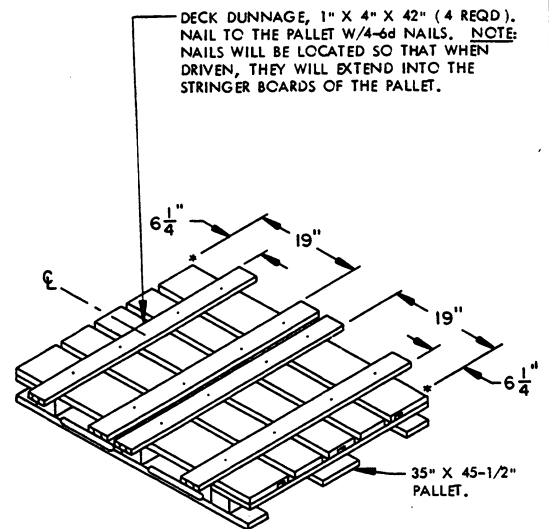
15 BOXES OF 105MM CARTRIDGES (2 PER BOX) @ 140 LBS	2,100 LBS (APPROX)
DUNNAGE	17 LBS
PALLET	65 LBS
TOTAL WEIGHT	2,182 LBS (APPROX)
CUBE	59.3 CUBIC FEET (APPROX)

TOTAL WEIGHT ----- 2,182 LBS (APPROX)
 CUBE ----- 59.3 CUBIC FEET (APPROX)

BILL OF MATERIAL		
LUMBER	LINEAR FEET	BOARD FEET
1" X 4"	14.00	4.67
NAILS	NO. REQD	POUNDS
6d (2")	16	0.09
PALLET, 35" X 45-1/2"	1 REQD	65 LBS
STEEL STRAPPING, 3/4"	97.00' REQD	6.93 LBS
SEAL FOR 3/4" STRAPPING	6 REQD	NIL



FILLER ASSEMBLY
(FOR MINUS ONE BOX)



PALLET DUNNAGE LOCATION