

APPENDIX 45L

UNITIZATION PROCEDURES FOR BOXED AMMUNITION AND COMPONENTS ON 4-WAY ENTRY PALLET

**CARTRIDGE, 105MM, PACKED TWO PER
WOODEN BOX, UNITIZED 12 BOXES PER
35" X 45-1/2" PALLET; APPROX BOX SIZE
46-1/4" L X 13" W X 8-1/4" H**

**NOTICE: THIS APPENDIX CANNOT STAND ALONE BUT MUST BE USED IN CONJUNCTION WITH
THE BASIC UNITIZATION PROCEDURES DRAWING 19-48-4116-20PA1002.**

DISTRIBUTION STATEMENT A:

**APPROVED FOR PUBLIC RELEASE;
DISTRIBUTION IS UNLIMITED.**

U.S. ARMY MATERIEL COMMAND DRAWING

<p style="font-size: small;">APPROVED, U.S. ARMY JOINT MUNITIONS COMMAND</p> <p style="font-size: x-large; font-family: cursive;"><i>David A. Piskovich</i></p> <p style="font-size: x-small; text-align: right;">AMSJA-R-REP-RP</p> <hr/> <p style="font-size: x-large; font-family: cursive;"><i>James M. [Signature]</i></p> <p style="font-size: x-small; text-align: right;">AMSJM-IT</p> <p style="font-size: small;">APPROVED BY ORDER OF COMMANDING GENERAL, U.S. ARMY MATERIEL COMMAND</p> <p style="font-size: x-large; font-family: cursive;"><i>Charles [Signature]</i></p> <p style="font-size: x-small;">U.S. ARMY DEFENSE AMMUNITION CENTER</p>	<p style="text-align: center;">CAUTION: VERIFY PRIOR TO USE AT WWW.DAC.ARMY.MIL THAT THIS IS THE MOST CURRENT VERSION OF THIS DOCUMENT. THIS IS PAGE 1 OF 4.</p> <table border="1" style="width: 100%; border-collapse: collapse;"> <tr> <td colspan="2" style="text-align: center;">DO NOT SCALE</td> <td colspan="2" style="text-align: center;">DECEMBER 1980</td> </tr> <tr> <td style="font-size: x-small;">ENGINEER OR TECHNICIAN</td> <td style="font-size: x-small;">BASIC REV.</td> <td colspan="2" style="text-align: center;">WILLIAM R. FRERICHS</td> </tr> <tr> <td></td> <td></td> <td colspan="2" style="text-align: center;">JARROD D. THOMAS</td> </tr> <tr> <td colspan="2" style="font-size: x-small;">TRANSPORTATION ENGINEERING DIVISION</td> <td style="font-size: x-small;">REVISION NO. 1</td> <td style="font-size: x-small;">JULY 2003</td> </tr> <tr> <td colspan="4" style="text-align: center; font-size: x-small;">SEE THE REVISION LISTING ON PAGE 2</td> </tr> <tr> <td style="font-size: x-small;">VALIDATION ENGINEERING DIVISION</td> <td style="font-size: x-small;">CLASS</td> <td style="font-size: x-small;">DIVISION</td> <td style="font-size: x-small;">DRAWING</td> </tr> <tr> <td style="font-size: x-small;">ENGINEERING DIRECTORATE</td> <td style="text-align: center;">19</td> <td style="text-align: center;">48</td> <td style="text-align: center;">4116/ 45L</td> </tr> <tr> <td></td> <td></td> <td></td> <td style="text-align: center;">20PA1002</td> </tr> </table>	DO NOT SCALE		DECEMBER 1980		ENGINEER OR TECHNICIAN	BASIC REV.	WILLIAM R. FRERICHS				JARROD D. THOMAS		TRANSPORTATION ENGINEERING DIVISION		REVISION NO. 1	JULY 2003	SEE THE REVISION LISTING ON PAGE 2				VALIDATION ENGINEERING DIVISION	CLASS	DIVISION	DRAWING	ENGINEERING DIRECTORATE	19	48	4116/ 45L				20PA1002
DO NOT SCALE		DECEMBER 1980																															
ENGINEER OR TECHNICIAN	BASIC REV.	WILLIAM R. FRERICHS																															
		JARROD D. THOMAS																															
TRANSPORTATION ENGINEERING DIVISION		REVISION NO. 1	JULY 2003																														
SEE THE REVISION LISTING ON PAGE 2																																	
VALIDATION ENGINEERING DIVISION	CLASS	DIVISION	DRAWING																														
ENGINEERING DIRECTORATE	19	48	4116/ 45L																														
			20PA1002																														

PALLET UNIT DATA				
ITEMS INCLUDED		● HAZARD CLASS AND DIVISION	● COMPAT-IBILITY GROUP	APPROX WEIGHT LBS
NSN	DODIC			
1315-00-028-4816	C496	1. 2. 1	E	1, 813

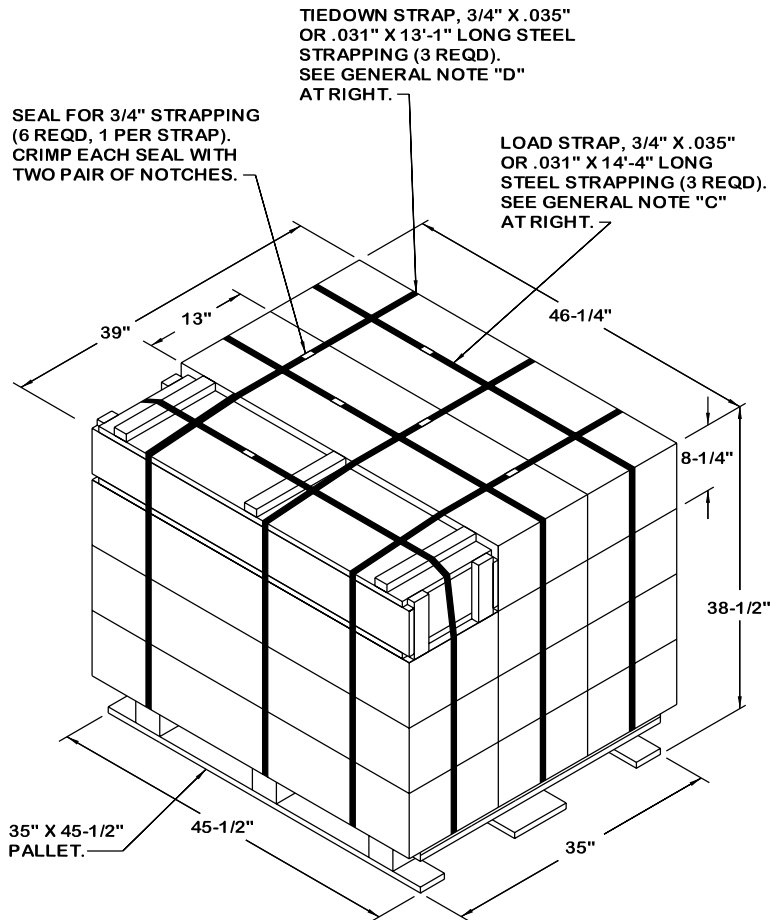
- HAZARD CLASSIFICATION DATA CONTAINED IN THE ABOVE CHART IS FOR GUIDANCE AND INFORMATIONAL PURPOSES ONLY. VERIFICATION OF THE SPECIFIED DATA SHOULD BE MADE BY CONSULTING THE MOST RECENT JOINT HAZARD CLASSIFICATION SYSTEM LISTING OR OTHER APPROVED LISTING(S).

REVISION

REVISION NO. 1, DATED JULY 2003, CONSISTS OF:

DELETING ITEM BY NATIONAL STOCK NUMBER (NSN) FROM THE PALLET UNIT DATA CHART.

GENERAL NOTES



PALLET UNIT

SEE GENERAL NOTE "B" AT RIGHT.

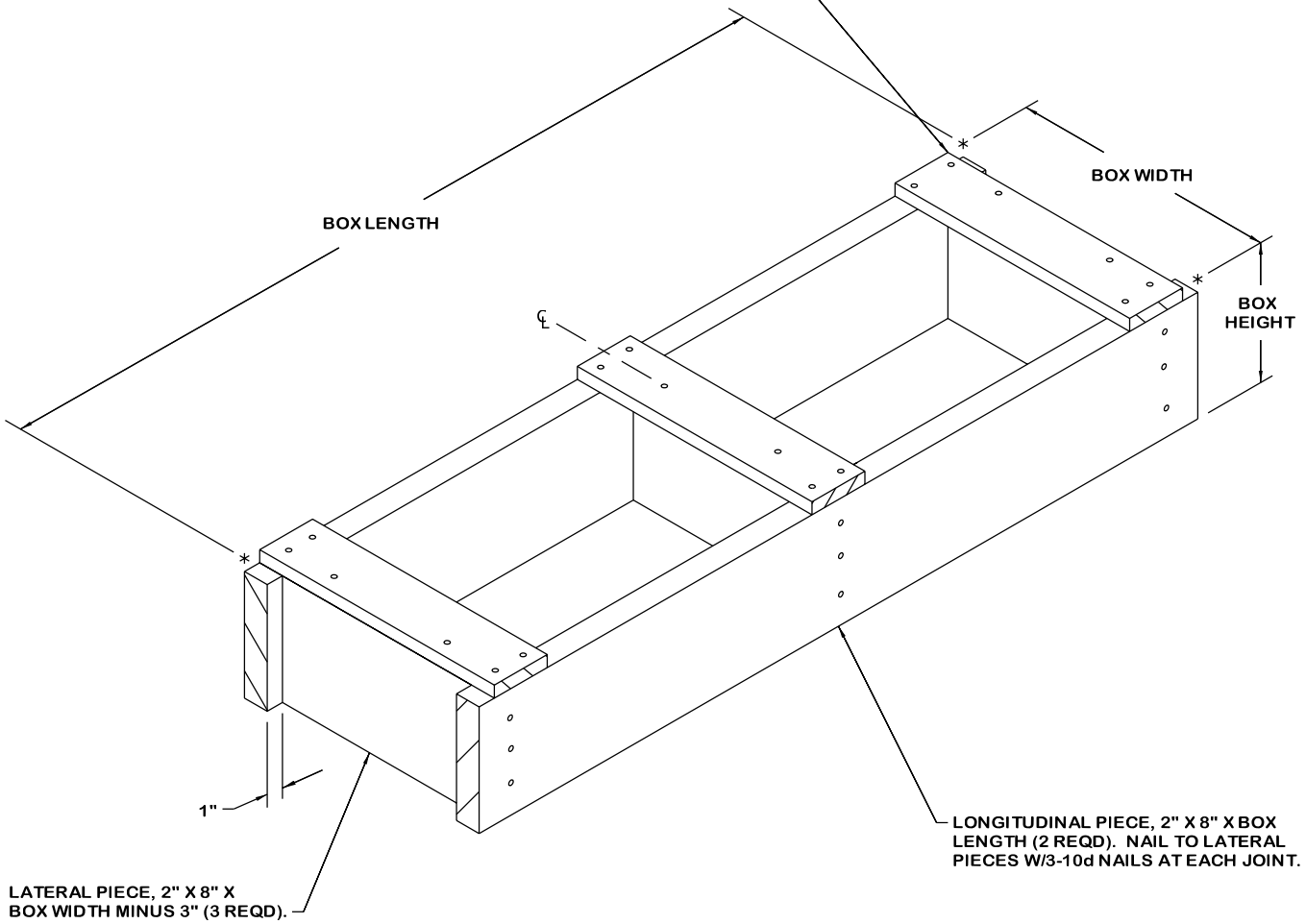
12 BOXES OF 105MM CARTRIDGES (2 PER BOX) @ 145 LBS	--	1,740 LBS (APPROX)
DUNNAGE	-----	8 LBS
PALLET	-----	65 LBS
<hr/>		
TOTAL WEIGHT	-----	1,813 LBS (APPROX)
CUBE	-----	40.2 CU FT (APPROX)

BILL OF MATERIAL			
PALLET, 35" X 45-1/2"	----	1 REQD	----- 65 LBS
STEEL STRAPPING, 3/4"	----	82.25' REQD	----- 7.34 LBS
SEAL FOR 3/4" STRAPPING	----	6 REQD	----- NIL

- A. THIS APPENDIX CANNOT STAND ALONE BUT MUST BE USED IN CONJUNCTION WITH THE BASIC UNITIZATION PROCEDURES DRAWING 19-48-4116-20PA1002. TO PRODUCE AN APPROVED UNIT LOAD, ALL PERTINENT PROCEDURES, SPECIFICATIONS AND CRITERIA SET FORTH WITHIN THE BASIC DRAWING WILL APPLY TO THE PROCEDURES DELINEATED IN THIS APPENDIX. ANY EXCEPTIONS TO THE BASIC PROCEDURES ARE SPECIFIED IN THIS APPENDIX.
- B. DIMENSIONS, CUBE AND WEIGHT OF A PALLET UNIT WILL VARY SLIGHTLY DEPENDING UPON THE ACTUAL DIMENSIONS OF THE BOXES AND THE WEIGHT OF THE SPECIFIC ITEM BEING UNITIZED.
- C. THE LOAD STRAPS MAY BE THREADED THROUGH THE STRAP SLOTS OF A PALLET OR PRE-POSITIONED ON THE PALLET DECK PRIOR TO PLACING THE BOXES ON THE PALLET.
- D. INSTALL EACH TIEDOWN STRAP TO PASS UNDER THE TOP DECK BOARDS OF THE PALLET AND TO BE LOCATED AS SHOWN. TIEDOWN STRAPS WILL BE TENSIONED AND SEALED PRIOR TO LOAD STRAPS.
- E. THE FOLLOWING AMC DRAWINGS ARE APPLICABLE FOR OUTLOADING AND STORAGE OF THE ITEMS COVERED BY THIS APPENDIX.

CARLOADING	----	19-48-4115-5PA1002
TRUCKLOADING	----	19-48-4117-11PA1003
STORAGE	----	19-48-4118-1-2-3-4-14-22PA1002
END OPENING ISO CONTAINER	----	19-48-4153-15PA1002
MILVAN	----	19-48-4166-15PA1003
SIDE OPENING ISO CONTAINER	----	19-48-4267-15PA1009
- F. IF ITEMS COVERED HEREIN ARE UNITIZED PRIOR TO ISSUANCE OF THIS REVISION TO THIS APPENDIX, THE BOXES NEED NOT BE REUNITIZED SOLELY TO CONFORM TO THIS REVISION.
- G. THE UNITIZATION PROCEDURES DEPICTED HEREIN MAY ALSO BE USED FOR UNITIZING 105MM CARTRIDGES WHEN IDENTIFIED BY DIFFERENT NATIONAL STOCK NUMBERS (NSN) THAN WHAT IS SHOWN ON PAGE 2, PROVIDED THE BOX PACK DOES NOT VARY FROM WHAT IS DELINEATED HEREIN. THE EXPLOSIVE CLASSIFICATION OF OTHER ITEMS MAY BE DIFFERENT THAN WHAT IS SHOWN.
- H. THE STYLE 1A PALLET DELINEATED IN THE DETAIL AT LEFT NEED NOT HAVE CHAMFERS OR STRAP SLOTS AS SPECIFIED WITHIN MILITARY SPECIFICATION MIL-P-15011 WHEN USED FOR THE UNITIZATION OF ITEMS COVERED BY THIS APPENDIX.
- J. FOR DETAILS OF THE MIL-B-2427 WOODEN BOX DEPICTED AT LEFT SEE DRAWING 76-1-1341.

TIE PIECE, 1" X 4" X BOX WIDTH
(3 REQD). NAIL TO LONGITUDINAL
PIECES W/2-6d NAILS AT EACH END
AND TO LATERAL PIECE W/2-6d
NAILS.



FILLER ASSEMBLY

(FOR MINUS ONE BOX)