

APPENDIX 45A

UNITIZATION PROCEDURES FOR BOXED AMMUNITION AND COMPONENTS ON 4-WAY ENTRY PALLETS

CARTRIDGE, 105 MM, PACKED TWO PER WIREBOUND
BOX, UNITIZED 20 BOXES PER 35" X 45 $\frac{1}{2}$ " PALLET;
APPROX BOX SIZE 35 $\frac{3}{8}$ " L X 11 $\frac{1}{2}$ " W X 6 $\frac{1}{4}$ " H

PALLET UNIT DATA						
ITEMS INCLUDED		HAZARD CLASSIFICATION				WEIGHT
NSN	DODIC	DOT CLASS	CG CLASS	QD CLASS	COMP GROUP	(LBS)
1315-01 012-7094	C445	A	IV	(12) 1.2	E	2,111

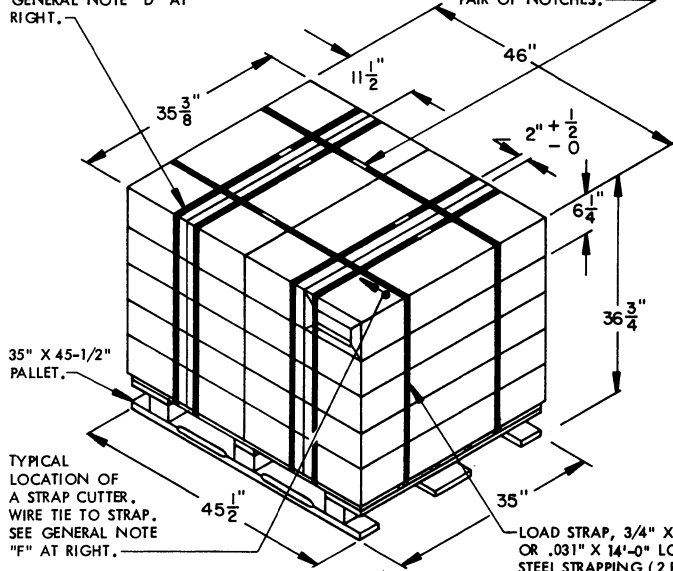
NOTICE: THIS APPENDIX CANNOT STAND ALONE BUT MUST BE USED IN CONJUNCTION WITH THE BASIC UNITIZATION PROCEDURES DRAWING 19-48-4116-20PA1002.

REVISIONS				DRAFTSMAN A.O. / <i>max</i>	PROJ ENG GBF / <i>new</i>
				CHECKER SRG / <i>BB</i>	LOG ENGINE OFFICE <i>John Ford</i>
APPROVED, U. S. ARMY ARMAMENT MATERIEL READINESS COMMAND					
			<i>M. H. Benton</i> DRAWN-MAD		<i>David P. Fetter</i> DRAWN-TMO
APPROVED BY ORDER OF COMMANDER GENERAL, U. S. ARMY MATERIEL DEVELOPMENT AND READINESS COMMAND					
<i>John L. Byrd</i> U. S. ARMY DEFENSE ARMAMENT CENTER AND SCHOOL					
U. S. ARMY DARCOM DRAWING					
FEBRUARY 1981					
CLASS	DIVISION	DRAWING	FILE		
19	48	4116/45A	20PA 1002		

DO NOT SCALE

TIEDOWN STRAP, 3/4" X .035" OR .031" X 12'-3" LONG STEEL STRAPPING (4 REQD). SEE GENERAL NOTE "D" AT RIGHT.

SEAL FOR 3/4" STRAPPING (6 REQD, 1 PER STRAP). CRIMP EACH SEAL WITH TWO PAIR OF NOTCHES.



TYPICAL LOCATION OF A STRAP CUTTER. WIRE TIE TO STRAP. SEE GENERAL NOTE "F" AT RIGHT.

LOAD STRAP, 3/4" X .035" OR .031" X 14'-0" LONG STEEL STRAPPING (2 REQD). SEE GENERAL NOTE "C" AT RIGHT.

PALLET UNIT

SEE GENERAL NOTE "B" AT RIGHT.

20 BOXES OF 105MM CARTRIDGES (2 PER BOX) @ 102 LBS ----- 2,040 LBS (APPROX)
 DUNNAGE ----- 6 LBS
 PALLET ----- 65 LBS

TOTAL WEIGHT ----- 2,111 LBS (APPROX)

CUBE ----- 34.6 CU FT (APPROX)

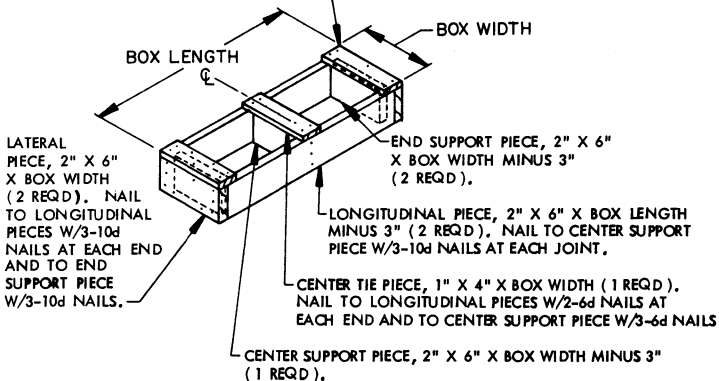
GENERAL NOTES

- A. THIS APPENDIX CANNOT STAND ALONE BUT MUST BE USED IN CONJUNCTION WITH THE BASIC UNITIZATION PROCEDURES DRAWING 19-48-4116-20PA1002, TO PRODUCE AN APPROVED UNIT LOAD, ALL PERTINENT PROCEDURES, SPECIFICATIONS AND CRITERIA SET FORTH WITHIN THE BASIC DRAWING WILL APPLY TO THE PROCEDURES DELINEATED IN THIS APPENDIX. ANY EXCEPTIONS TO THE BASIC PROCEDURES ARE SPECIFIED IN THIS APPENDIX.
- B. DIMENSIONS, CUBE AND WEIGHT OF A PALLET UNIT WILL VARY SLIGHTLY DEPENDING UPON THE ACTUAL DIMENSIONS OF THE BOXES AND THE WEIGHT OF THE SPECIFIC ITEM BEING UNITIZED.
- C. THE LOAD STRAPS WILL BE THREADED THROUGH THE STRAP SLOTS OF THE PALLET. LOAD STRAPS MUST BE TENSIONED AND SEALED PRIOR TO APPLICATION OF TIE-DOWN STRAPS.
- D. INSTALL EACH TIEDOWN STRAP TO PASS UNDER THE TOP DECK BOARDS OF THE PALLET AND TO BE LOCATED AS SHOWN. NOTE THAT THE STRAPS WILL BE LOCATED AS DIMENSIONED, NEAR THE SIDE CLEATS OF THE END PANELS OF THE BOX.
- E. THE FOLLOWING DARCOM DRAWINGS ARE APPLICABLE FOR UNLOADING AND STORAGE OF THE ITEMS COVERED BY THIS APPENDIX.
 - CARLOADING ----- DRAWING 19-48-4115-5PA1002
 - TRUCKLOADING ----- DRAWING 19-48-4117-11PA1003
 - STORAGE ----- DRAWING 19-48-4118-1-2-3-4-14-22PA1002
- F. FOR METHOD OF SECURING A STRAP CUTTER TO THE PALLET UNIT, SEE DARCOM DRAWING 19-48-4127-201000.
- G. IF ITEMS COVERED HEREIN ARE UNITIZED PRIOR TO ISSUANCE OF THIS APPENDIX, THE BOXES NEED NOT BE REUNITIZED SOLELY TO CONFORM TO THIS APPENDIX.
- H. THE UNITIZATION PROCEDURES DEPICTED HEREIN MAY ALSO BE USED FOR UNITIZING 105MM CARTRIDGES WHEN IDENTIFIED BY DIFFERENT NATIONAL STOCK NUMBERS (NSN) THAN WHAT IS SHOWN ON THE TITLE PAGE, PROVIDED THE BOX PACK DOES NOT VARY FROM WHAT IS DELINEATED HEREIN. THE EXPLOSIVE CLASSIFICATION OF OTHER ITEMS MAY BE DIFFERENT THAN WHAT IS SHOWN.

BILL OF MATERIAL

PALLET, 35" X 45-1/2" -----	1 REQD -----	65 LBS
STEEL STRAPPING, 3/4" -----	77.00' REQD -----	5.50 LBS
SEAL FOR 3/4" STRAPPING -----	6 REQD -----	NIL

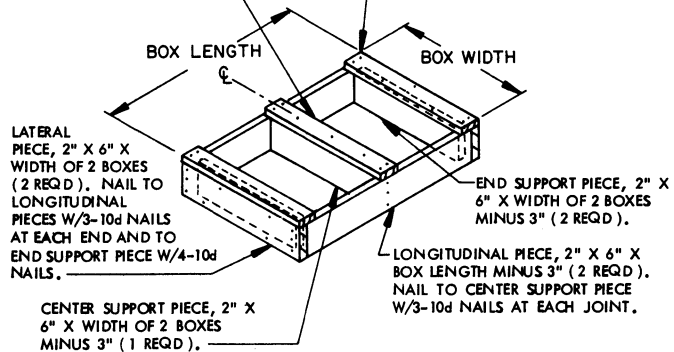
TIE PIECE, 1" X 4" X BOX WIDTH (2 REQD). NAIL TO LATERAL PIECES W/3-6d NAILS. NAIL TO LONGITUDINAL PIECES W/1-6d NAIL AT EACH END AND TO END SUPPORT PIECE W/2-6d NAILS.



FILLER ASSEMBLY A
(FOR MINUS ONE BOX)

CENTER TIE PIECE, 1" X 4" X WIDTH OF 2 BOXES (1 REQD). NAIL TO LONGITUDINAL PIECES W/2-6d NAILS AT EACH END AND TO CENTER SUPPORT PIECE W/3-10d NAILS.

TIE PIECE, 1" X 4" X WIDTH OF 2 BOXES (2 REQD). NAIL TO LATERAL PIECES W/3-6d NAILS. NAIL TO LONGITUDINAL PIECES W/1-6d NAIL AT EACH END AND TO END SUPPORT PIECE W/2-6d NAILS.



FILLER ASSEMBLY B
(FOR MINUS 2 BOXES)