

APPENDIX 39B

UNITIZATION PROCEDURES FOR BOXED AMMUNITION AND COMPONENTS ON 4-WAY ENTRY PALLETS

CARTRIDGE, 4.2 INCH, PACKED 2 PER WOODEN
BOX, UNITIZED 20 BOXES PER 35" X 45-1/2"
PALLET; APPROX BOX SIZE 31-5/16" L X
11-13/16" W X 7-3/8" H

NOTICE: THIS APPENDIX CANNOT STAND ALONE BUT MUST BE USED IN CONJUNCTION WITH
THE BASIC UNITIZATION PROCEDURES DRAWING 19-48-4116-20PA1002.

DISTRIBUTION STATEMENT A.

APPROVED FOR PUBLIC RELEASE:
DISTRIBUTION IS UNLIMITED.

U.S. ARMY MATERIEL COMMAND DRAWING			
APPROVED, U.S. ARMY ARMAMENT, MUNITIONS AND CHEMICAL COMMAND NH <i>David A. Perkoich</i> SMCAR-ESK	DRAFTSMAN ENGINEER BETTY J. KUNDERT SANDRA M. SCHULTZ		
<i>Timothy J. Fre</i> AMSMC-TMJ	SUPPLY ENGINEERING DIVISION <i>F. J. Muehle</i>	TRANSPORTATION ENGINEERING DIVISION <i>W. Zureick</i>	VALIDATION ENGINEERING DIVISION <i>ACM D. L. ...</i>
APPROVED BY ORDER OF COMMANDING GENERAL, U.S. ARMY MATERIEL COMMAND <i>John L. Byrd</i>	LOGISTICS ENGINEERING OFFICE <i>William F. Ernst</i>		
U.S. ARMY DEFENSE AMMUNITION CENTER AND SCHOOL	FEBRUARY 1984		
REVISION NO. 1	AUGUST 1994	CLASS 19	DIVISION 48
SEE THE REVISION LISTING ON PAGE 2		DRAWING 4116/ 39B	FILE 20PA 1002

DO NOT SCALE

PALLET UNIT DATA				
ITEMS INCLUDED		HAZARD CLASS AND DIVISION ●		APPROX WEIGHT LBS
NSN	DODIC	OD CLASS	COMP GROUP	
1315-				
00-028-5016	C704	1.1	E	1,590
00-892-4864	C704	1.1	E	1,590
00-935-9128	C704	1.1	E	1,590
00-028-5017	C705	1.1	E	1,590
00-723-5724	C705	1.1	E	1,590
00-935-9140	C705	1.1	E	1,590
00-028-5015	C706	(08)1.2	G	1,730
00-761-2073	C706	(08)1.2	G	1,730
00-935-9212	C706	(08)1.2	G	1,730
00-965-0788	C706	(08)1.2	G	1,730
01-129-9337	C706	(08)1.2	G	1,730
00-935-9286	C710	(12)1.2	G	1,590

● HAZARD CLASSIFICATION DATA CONTAINED IN THE ABOVE CHART IS FOR GUIDANCE AND INFORMATIONAL PURPOSES ONLY. VERIFICATION OF THE SPECIFIED DATA SHOULD BE MADE BY CONSULTING THE MOST RECENT JOINT HAZARD CLASSIFICATION SYSTEM LISTING OR OTHER APPROVED LISTING(S).

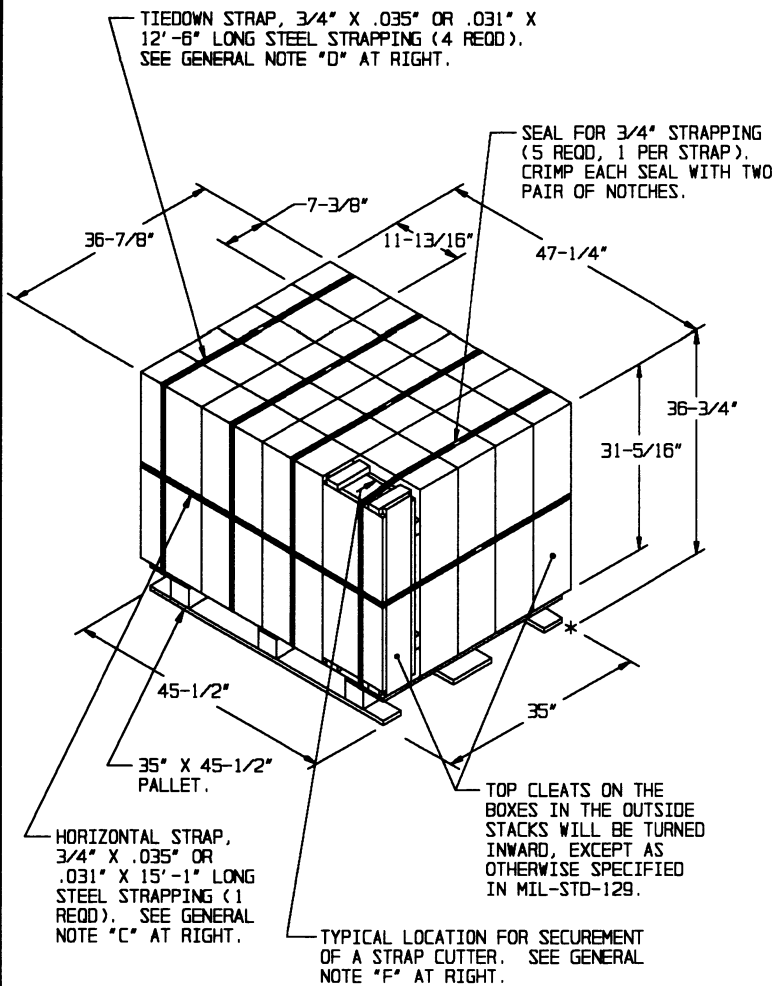
REVISION

REVISION NO. 1, DATED AUGUST 1994, CONSISTS OF:

1. ADDING ITEM BY NATIONAL STOCK NUMBER TO "PALLET UNIT DATA" CHART.
2. DELETING ITEM BY NATIONAL STOCK NUMBER FROM "PALLET UNIT DATA" CHART.
3. CHANGING WEIGHT OF ITEMS IN "PALLET UNIT DATA" CHART.

GENERAL NOTES

- A. THIS APPENDIX CANNOT STAND ALONE BUT MUST BE USED IN CONJUNCTION WITH THE BASIC UNITIZATION PROCEDURES DRAWING 19-48-4116-20PA1002. TO PRODUCE AN APPROVED UNIT LOAD, ALL PERTINENT PROCEDURES, SPECIFICATIONS AND CRITERIA SET FORTH WITHIN THE BASIC DRAWING WILL APPLY TO THE PROCEDURES DELINEATED IN THIS APPENDIX. ANY EXCEPTIONS TO THE BASIC PROCEDURES ARE SPECIFIED IN THIS APPENDIX.
- B. DIMENSIONS, CUBE AND WEIGHT OF A PALLET UNIT WILL VARY SLIGHTLY DEPENDING UPON THE ACTUAL DIMENSIONS OF THE BOXES AND THE WEIGHT OF THE SPECIFIC ITEM BEING UNITIZED.
- C. INSTALL HORIZONTAL STRAP TO ENCIRCLE THE LAYER OF BOXES ON THE PALLET. NOTE THAT THE STRAP WILL BE LOCATED AS SHOWN. HORIZONTAL STRAP MUST BE TENSIONED AND SEALED PRIOR TO THE APPLICATION OF TIEDOWN STRAPS.
- D. INSTALL EACH TIEDOWN STRAP TO PASS UNDER THE DECK/STRINGER BOARDS OF THE PALLET AND TO BE LOCATED AS SHOWN. TIEDOWN STRAPS WILL NOT BE APPLIED UNTIL THE HORIZONTAL STRAP HAS BEEN TENSIONED AND SEALED.
- E. THE FOLLOWING AMC DRAWINGS ARE APPLICABLE FOR OUTLOADING AND STORAGE OF THE ITEMS COVERED BY THIS APPENDIX.
 - CARLOADING - - - - 19-48-4115-5PA1002
 - TRUCKLOADING - - - - 19-48-4117-11PA1003
 - STORAGE - - - - 19-48-4118-1-2-3-4-14-22PA1002
 - END OPENING ISO CONTAINER - - - - 19-48-4153-15PA1002
 - MILVAN - - - - 19-48-4166-15PA1003
 - SIDE OPENING ISO CONTAINER - - - - 19-48-4267-15PA1009
- F. FOR METHOD OF SECURING A STRAP CUTTER TO THE PALLET UNIT, SEE AMC DRAWING 19-48-4127-20P1000.
- G. IF ITEMS COVERED HEREIN ARE UNITIZED PRIOR TO ISSUANCE OF THIS APPENDIX, THE BOXES NEED NOT BE REUNITIZED SOLELY TO CONFORM TO THIS APPENDIX.
- H. THE UNITIZATION PROCEDURES DEPICTED HEREIN MAY ALSO BE USED FOR UNITIZING 4.2 INCH CARTRIDGES WHEN IDENTIFIED BY DIFFERENT NATIONAL STOCK NUMBERS (NSN) THAN WHAT IS SHOWN ON PAGE 2, PROVIDED THE BOX PACK DOES NOT VARY FROM WHAT IS DELINEATED HEREIN. THE EXPLOSIVE CLASSIFICATION OF OTHER ITEMS MAY BE DIFFERENT THAN WHAT IS SHOWN.
- J. THE STYLE 1A PALLET DELINEATED IN THE DETAIL AT LEFT NEED NOT HAVE CHAMFERS OR STRAP SLOTS AS SPECIFIED WITHIN MILITARY SPECIFICATION MIL-P-15011 WHEN USED FOR THE UNITIZATION OF ITEMS COVERED BY THIS APPENDIX.
- K. IF THERE IS A NEED FOR FILLER ASSEMBLIES AND AT LEAST TWO PALLET UNITS ARE BEING CONSTRUCTED, NOT MORE THAN 16 FILLERS WILL BE INSTALLED IN ANY ONE PALLET UNIT. ADDITIONAL FILLERS CAN PUT IN A SECOND PALLET UNIT AS REQUIRED WHEN THE QUANTITY OF 16 FILLERS IN THE FIRST REDUCED PALLET UNIT IS INSUFFICIENT TO SATISFY THE TOTAL REDUCTION NEEDED. USING TWO PALLET UNITS TO SATISFY THE PALLETIZATION CRITERIA APPLICABLE TO LESS-THAN-FULL PALLET UNITS IS AN EXCEPTION IS NECESSARY FOR THE AMMUNITION PACK COVERED BY THIS APPENDIX, TO MOST EFFECTIVELY GET AN ACCEPTABLE, COMPACT AND SOUND PALLET UNIT.



PALLET UNIT

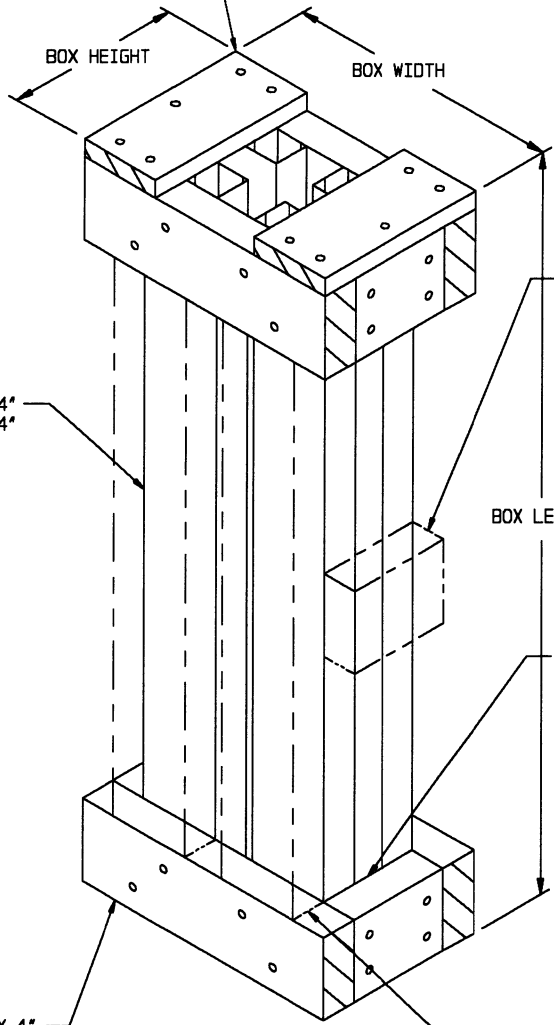
SEE GENERAL NOTE "B" AT RIGHT.

20 BOXES OF 4.2" CARTRIDGES (2 PER BOX) AT 82 LBS	---	1,640 LBS (APPROX)
DUNNAGE	-----	5 LBS
PALLET	-----	65 LBS
<hr/>		
TOTAL WEIGHT	-----	1,710 LBS (APPROX)
CUBE	-----	37.1 CU FT (APPROX)

BILL OF MATERIAL

PALLET, 35" X 45-1/2"	---	1 REQD	-----	65 LBS
STEEL STRAPPING, 3/4"	---	65.08' REQD	-----	4.65 LBS
SEAL FOR 3/4" STRAPPING	---	5 REQD	-----	NIL

TIE PIECE, 1" X 4" X BOX HEIGHT (2 REQD). NAIL TO LONGITUDINAL PIECES W/2-6d NAILS AT EACH END AND TO LATERAL PIECE W/1-6d NAIL.



STRAP BEARING PIECE, 2" X 4" X BOX HEIGHT MINUS 3" (AS REQD). NAIL TO VERTICAL PIECES W/1-10d NAIL AT EACH END. NOTE: WHEN A UNIT HAS MORE THAN SIX (6) BOXES OMITTED, THE FILLER ASSEMBLY OR ASSEMBLIES LOCATED IN AN OUTER STACK ON THE 35" SIDE OR SIDES OF THE PALLET WILL REQUIRE A "STRAP BEARING PIECE" POSITIONED UNDER THE HORIZONTAL STRAP. STAPLE STRAP TO THE STRAP BEARING PIECE.

VERTICAL PIECE, 2" X 4" X BOX LENGTH MINUS 3/4" (4 REQD),

LATERAL PIECE, 2" X 4" X BOX HEIGHT MINUS 3" (4 REQD). NAIL TO VERTICAL PIECES W/2-10d NAILS AT EACH END.

LONGITUDINAL PIECE, 2" X 4" X BOX WIDTH (4 REQD). NAIL TO VERTICAL PIECES W/2-10d NAILS AT EACH END.

SUPPORT PIECE, 2" X 4" X CUT-TO-FIT IN LENGTH (AS REQD). NAIL TO A VERTICAL PIECE W/4-10d NAILS. NOTE: WHEN A UNIT HAS MORE THAN TWELVE (12) BOXES OMITTED, THE FILLER ASSEMBLY OR ASSEMBLIES LOCATED IN AN OUTER STACK ON THE 45-1/2" SIDE OR SIDES OF THE PALLET WILL REQUIRE SUPPORT PIECES AS SHOWN.

FILLER ASSEMBLY
(FOR MINUS ONE BOX)