

APPENDIX 26S

UNITIZATION PROCEDURES FOR BOXED AMMUNITION AND COMPO- NENTS ON 4-WAY ENTRY PALLETS

**CARTRIDGE, 40MM, PACKED 32 PER PA120 METAL
CONTAINER, UNITIZED 48 CONTAINERS PER 40" X
48" PALLET; APPROX CONTAINER SIZE 18-3/4" L X
6-3/8" W X 10-3/8" H**

**NOTICE: THIS APPENDIX CANNOT STAND ALONE BUT MUST BE USED IN CONJUNCTION WITH THE BASIC UNITIZATION
PROCEDURES DRAWING 19-48-4116-20PA1002.**

DISTRIBUTION STATEMENT A:

**APPROVED FOR PUBLIC RELEASE
DISTRIBUTION IS UNLIMITED.**

U.S. ARMY MATERIEL COMMAND DRAWING

<p style="text-align: center;">APPROVED, COMBAT CAPABILITIES DEVELOPMENT COMMAND ARMAMENTS CENTER</p> <p>HANSSSEN.JO SEPH.W.1376 495538</p> <p style="font-size: small;">Digitally signed by HANSSSEN.JOSEPH.W. 1376495538 Date: 2020.11.16 12:18:35 -06'00'</p> <p style="text-align: right;">FCDD-ACE-LTP</p>	<p>CAUTION: VERIFY PRIOR TO USE AT https://www.dau.edu/cop/ammo/Pages/Default.aspx THAT THIS IS THE MOST CURRENT VERSION OF THIS DOCUMENT. THIS IS PAGE 1 OF 4.</p>										
<p style="text-align: center;">APPROVED, U.S. ARMY JOINT MUNITIONS COMMAND</p> <p>WARD.GINA. M.1369379808</p> <p style="font-size: small;">Digitally signed by WARD.GINA.M.1369379808 Date: 2020.11.17 16:13:46 -06'00'</p> <p style="text-align: right;">AMSJM-MLT</p>	<p>DO NOT SCALE</p>	<p>DECEMBER 1992</p>									
<p style="text-align: center;">APPROVED BY ORDER OF COMMANDING GENERAL, U.S. ARMY MATERIEL COMMAND</p> <p>SMITH.THERESA. ANN.1009147639</p> <p style="font-size: small;">Digitally signed by SMITH.THERESA.ANN.1009147 639 Date: 2020.11.18 07:05:17 -06'00'</p> <p style="text-align: center;">U.S. ARMY DEFENSE AMMUNITION CENTER</p>	<table border="1" style="width: 100%; border-collapse: collapse;"> <tr> <td style="width: 20%;">DESIGN ENGINEER</td> <td style="width: 10%;">BASIC</td> <td style="width: 70%;">SANDRA SCHULTZ</td> </tr> <tr> <td></td> <td>REV.</td> <td>MADELINE BANKS</td> </tr> </table>	DESIGN ENGINEER	BASIC	SANDRA SCHULTZ		REV.	MADELINE BANKS	<table border="1" style="width: 100%; border-collapse: collapse;"> <tr> <td style="width: 50%;">REVISION NO. 7</td> <td style="width: 50%;">OCTOBER 2020</td> </tr> </table>	REVISION NO. 7	OCTOBER 2020	<p>SEE THE REVISION LISTING ON PAGE 2</p>
DESIGN ENGINEER	BASIC	SANDRA SCHULTZ									
	REV.	MADELINE BANKS									
REVISION NO. 7	OCTOBER 2020										
<p style="text-align: center;">TEST ENGINEER</p> <p>TEST REPORT</p> <p style="text-align: center;">EXPLOSIVE SAFETY DIRECTORATE</p>	<p>ENGINEERING DIVISON</p> <p>FIEFFER.LAUR A.A.1230375727</p> <p style="font-size: small;">Digitally signed by FIEFFER.LAURA.A.1230375727 Date: 2020.10.21 14:44:34 -05'00'</p> <p>FELICIANO.AD IN.1259200373</p> <p style="font-size: small;">Digitally signed by FELICIANO.ADIN.1259200373 Date: 2020.10.30 10:38:45 -05'00'</p> <p>THOMAS.CARL.AN THONY.1104621372</p> <p style="font-size: small;">Digitally signed by THOMAS.CARL.ANTHONY.11046 21372 Date: 2020.11.02 09:11:16 -06'00'</p>	<table border="1" style="width: 100%; border-collapse: collapse;"> <tr> <td style="width: 15%;">CLASS</td> <td style="width: 15%;">DIVISION</td> <td style="width: 15%;">DRAWING</td> <td style="width: 55%;">FILE</td> </tr> <tr> <td style="text-align: center;">19</td> <td style="text-align: center;">48</td> <td style="text-align: center;">4116/ 26S</td> <td style="text-align: center;">20PA1002</td> </tr> </table>	CLASS	DIVISION	DRAWING	FILE	19	48	4116/ 26S	20PA1002	
CLASS	DIVISION	DRAWING	FILE								
19	48	4116/ 26S	20PA1002								

PALLET UNIT DATA				
ITEMS INCLUDED		*HAZARD CLASS AND DIVISION	*COMPATIBILITY GROUP	APPROX WEIGHT (LBS)
NSN	DODIC			
1310-				
01-498-9274		1. 2. 2	C	2, 148
01-362-5295	B542	1. 1	E	2, 148
01-362-5296	B542	1. 1	E	2, 148
01-419-9285	B542	1. 1	E	2, 148
01-567-5540	B542	1. 1	E	2, 148
01-361-9039	B576	1. 4	C	2, 148
01-362-5294	B584	1. 4	C	2, 148
01-464-4121	BA11	1. 4	C	2, 148
01-472-9871	BA12	1. 4	C	2, 148
01-586-9867	BA12	1. 4	S	2, 148
01-530-8878	BA21	1. 4	C	2, 148
01-586-9864	BA21	1. 4	S	2, 148
01-624-2826	BA49	1. 4	C	2, 100
01-667-1453	BA55	1. 4	G	2, 148

*HAZARD CLASSIFICATION DATA CONTAINED IN THE ABOVE CHART IS FOR GUIDANCE AND INFORMATIONAL PURPOSES ONLY. VERIFICATION OF THE SPECIFIED DATA SHOULD BE MADE BY CONSULTING THE MOST RECENT JOINT HAZARD CLASSIFICATION SYSTEM LISTING OR OTHER APPROVED LISTING(S).

REVISIONS

REVISION NO. 1, DATED AUGUST 1995, CONSISTS OF:

1. CHANGING DIMENSIONS ON END AND SPACER ASSEMBLIES.
2. ADDING GENERAL NOTES "J", "K", "L" AND "M" ON PAGE 3.

REVISION NO. 2, DATED DECEMBER 1999, CONSISTS OF:

ADDING ITEM BY NATIONAL STOCK NUMBER TO "PALLET UNIT DATA" CHART.

REVISION NO. 3, DATED DECEMBER 2004, CONSISTS OF:

ADDING ITEM BY NATIONAL STOCK NUMBER TO "PALLET UNIT DATA" CHART.

REVISION NO. 4, DATED JULY 2008, CONSISTS OF CHANGES PER ECP R08K3007 INCLUDING:

1. CORRECTING THE LOAD STRAP CALLOUT.
2. ADDING .029" THICKNESS STRAPPING TO THE CALLOUTS.
3. UPDATING EMPTY CONTAINER MARKING GENERAL NOTE.
4. UPDATING DRAWING FORMAT.

REVISION NO. 5, DATED AUGUST 2012, CONSISTS OF CHANGES PER ECP R11K2054 (1-3) AND ECP R13K2017 (1 AND 4) INCLUDING:

1. ADDING ITEM BY NATIONAL STOCK NUMBERS TO "PALLET UNIT DATA" CHART.
2. CORRECTING WEIGHTS IN "PALLET UNIT DATA" CHART.
3. CHANGING APPROXIMATE WEIGHT IN THE "LOAD AS SHOWN" TABLE ON PAGE 3.
4. CHANGING MIL-P-15011 TO MIL-DTL-15011 IN GENERAL NOTES.
5. UPDATING DRAWING FORMAT.

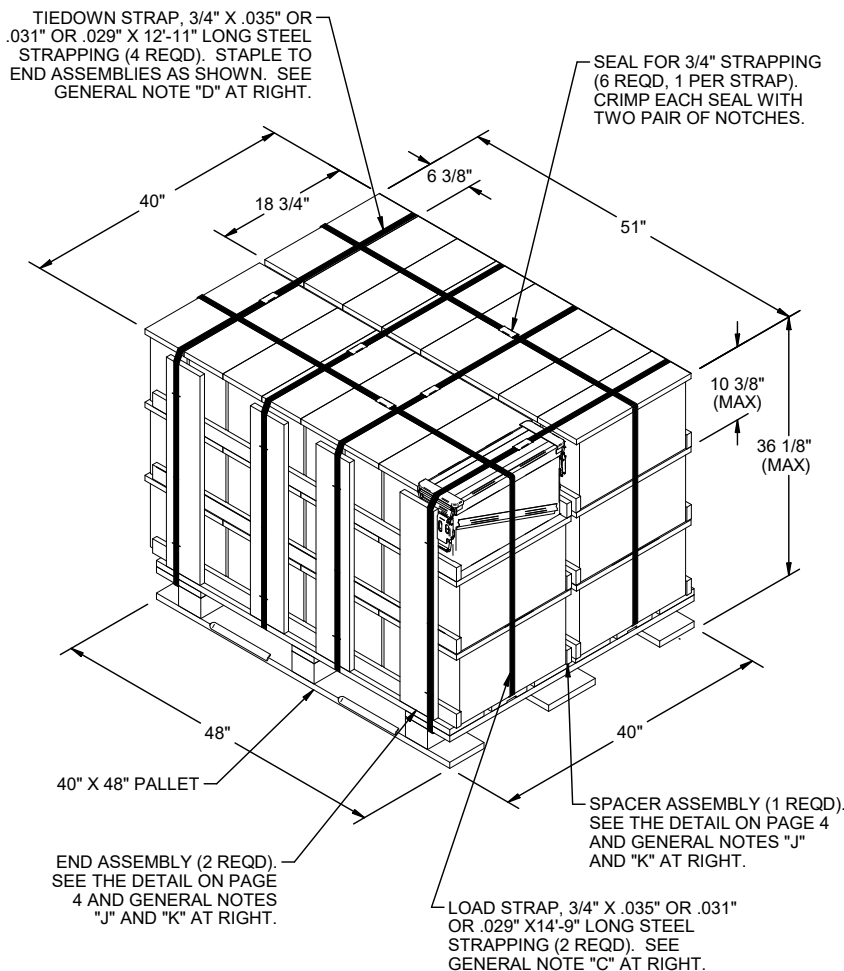
REVISION NO. 6, DATED FEBRUARY 2016, CONSISTS OF CHANGES PER ECP R14S2052 INCLUDING:

1. ADDING ITEM BY NATIONAL STOCK NUMBER TO "PALLET UNIT DATA" CHART
2. ADDING DRAWING NUMBER 13051591 TO GENERAL NOTE "L".

REVISION NO. 7, DATED OCTOBER 2020, CONSISTS OF CHANGES PER ECP R19S2213 INCLUDING:

ADDING ITEM BY NATIONAL STOCK NUMBER TO "PALLET UNIT DATA" CHART.

GENERAL NOTES



PALLET UNIT

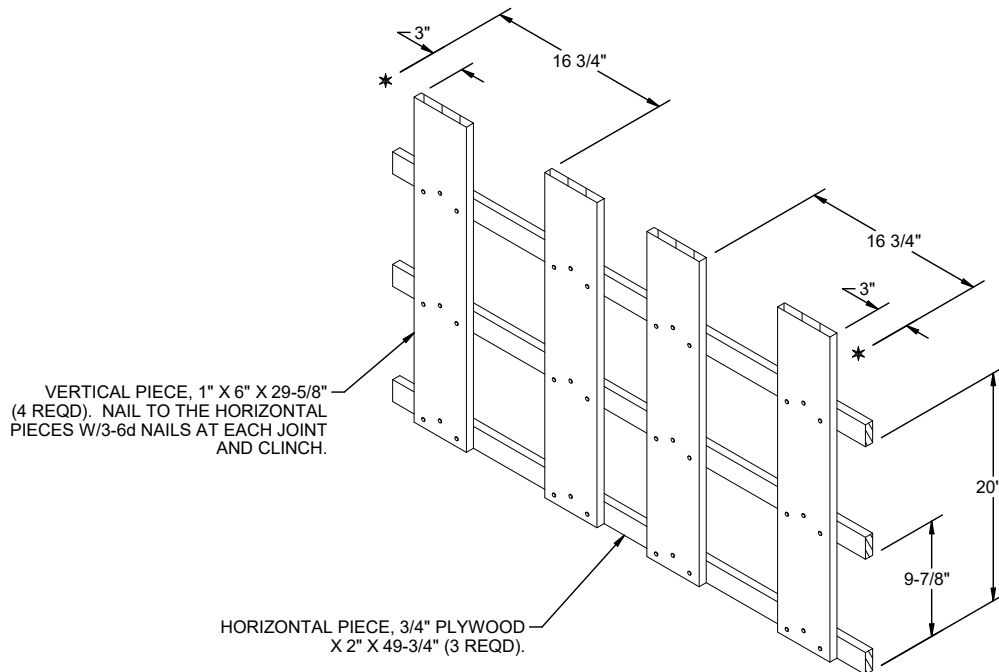
SEE GENERAL NOTE "B" AT RIGHT.

48 BOXES OF 40MM CARTRIDGE (32 PER BOX) @ 42 LBS - - - 2,016 LBS (APPROX)
 DUNNAGE - - - - - 52 LBS
 PALLET - - - - - 80 LBS

TOTAL WEIGHT - - - - - 2,148 LBS (APPROX)
 CUBE - - - - - 42.7 CU FT (APPROX)

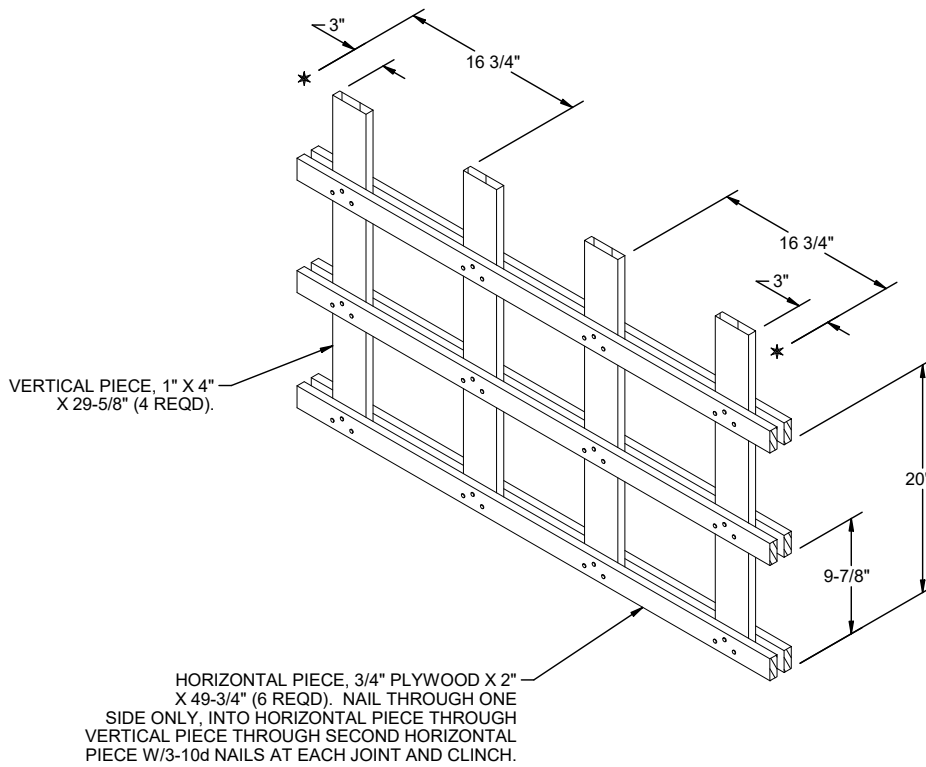
BILL OF MATERIAL		
LUMBER	LINEAR FEET	BOARD FEET
1" X 4"	9.88	3.29
1" X 6"	19.75	9.88
NAI LS	NO. REQD	POUNDS
6d (2")	72	0.42
10d (3")	36	0.55
PALLET, 40" X 48" - - - - - 1 REQD - - 80 LBS		
PLYWOOD, 3/4" - - - 8.29 SQ FT REQD - 17.10 LBS		
STEEL STRAPPING, 3/4" - 81.17' REQD - 7.25 LBS		
SEAL FOR 3/4" STRAPPING - - 6 REQD - - - - NIL		
STAPLE, 15/16" X 3/4" - - - 16 REQD - - - - NIL		

- A. THIS APPENDIX CANNOT STAND ALONE BUT MUST BE USED IN CONJUNCTION WITH THE BASIC UNITIZATION PROCEDURES DRAWING 19-48-4116-20PA1002. TO PRODUCE AN APPROVED UNIT LOAD, ALL PERTINENT PROCEDURES, SPECIFICATIONS AND CRITERIA SET FORTH WITHIN THE BASIC DRAWING WILL APPLY TO THE PROCEDURES DELINEATED IN THIS APPENDIX. ANY EXCEPTIONS TO THE BASIC PROCEDURES ARE SPECIFIED IN THIS APPENDIX.
- B. DIMENSIONS, CUBE AND WEIGHT OF A PALLET UNIT WILL VARY SLIGHTLY DEPENDING UPON THE ACTUAL DIMENSIONS OF THE BOXES AND THE WEIGHT OF THE SPECIFIC ITEM BEING UNITIZED.
- C. THE LOAD STRAPS MUST BE PRE-POSITIONED ON THE PALLET DECK PRIOR TO PLACING BOXES ON THE PALLET. NOTE THAT THE LOAD STRAPS WILL BE LOCATED AS SHOWN. LOAD STRAPS MUST BE TENSIONED AND SEALED PRIOR TO APPLICATION OF TIEDOWN STRAPS.
- D. INSTALL EACH TIEDOWN STRAP TO PASS UNDER THE DECK/STRINGER BOARDS OF THE PALLET AND TO BE LOCATED AS SHOWN. TIEDOWN STRAPS WILL NOT BE APPLIED UNTIL THE LOAD STRAPS HAVE BEEN TENSIONED AND SEALED.
- E. THE FOLLOWING AMC DRAWINGS ARE APPLICABLE FOR OUTLOADING AND STORAGE OF THE ITEMS COVERED BY THIS APPENDIX.
 - CARLOADING - - - - 19-48-4115-5PA1002
 - TRUCKLOADING - - - - 19-48-4117-11PA1003
 - STORAGE - - - - - 19-48-4118-1-2-3-4-14-22PA1002
 - END OPENING ISO
 - CONTAINER - - - - 19-48-4153-15PA1002
 - MILVAN - - - - - 19-48-4166-15PA1003
 - SIDE OPENING ISO
 - CONTAINER - - - - 19-48-4267-15PA1009
- F. IF ITEMS COVERED HEREIN ARE UNITIZED PRIOR TO ISSUANCE OF THIS REVISION TO THIS APPENDIX, THE BOXES NEED NOT BE REUNITIZED SOLELY TO CONFORM TO THIS REVISION.
- G. THE UNITIZATION PROCEDURES DEPICTED HEREIN MAY ALSO BE USED FOR UNITIZING 40MM CARTRIDGES WHEN IDENTIFIED BY DIFFERENT NATIONAL STOCK NUMBERS (NSN) THAN WHAT IS SHOWN ON PAGE 2, PROVIDED THE CONTAINER DOES NOT VARY FROM WHAT IS DELINEATED HEREIN. THE EXPLOSIVE CLASSIFICATION OF OTHER ITEMS MAY BE DIFFERENT THAN WHAT IS SHOWN.
- H. THE STYLE 1 PALLET DELINEATED IN THE DETAIL AT LEFT NEED NOT HAVE CHAMFERS OR STRAP SLOTS AS SPECIFIED WITHIN MILITARY SPECIFICATION MIL-DTL-15011 WHEN USED FOR THE UNITIZATION OF ITEMS COVERED BY THIS APPENDIX.
- J. DIMENSIONS OF THE SPACER AND END ASSEMBLIES ARE APPROXIMATE AND MUST BE VERIFIED IN ACCORDANCE WITH GENERAL NOTE "Z" IN THE BASIC PROCEDURES. THESE ASSEMBLIES MUST NOT PROTRUDE PAST THE TOPS AND/OR SIDES OF THE METAL CONTAINERS. THEY MAY BE SHORTER, PROVIDED THE TIEDOWN STRAPS ARE PREVENTED FROM DAMAGING THE EDGES OF THE CONTAINERS AND ARE NOT IN CONTACT WITH THE STACKING AIDS ON THE CONTAINER LID. THE HORIZONTAL PIECES MUST FIT AGAINST THE BODY OF THE CONTAINER AND MUST NOT BEAR AGAINST THE HANDLE OR LATCH ASSEMBLY.
- K. ALL DUNNAGE SHALL BE PRESERVATIVE TREATED IN ACCORDANCE WITH GENERAL NOTE "AA" IN THE BASIC PROCEDURES.
- L. FOR DETAILS OF THE METAL CONTAINER SEE ARDEC DRAWING 12928042, 13051591 OR 13071651.
- M. EMPTY OR REJECT PA120 CONTAINERS WILL BE USED AS FILLER CONTAINERS AS NECESSARY. FILLER CONTAINERS MUST BE INSTALLED IN THE MIDDLE OF THE TOP LAYER(S) OF CONTAINERS. WHEN (EMPTY) FILLER CONTAINERS ARE USED IN PLACE OF OMITTED CONTAINERS TO COMPLETELY FILL OUT A LAYER ON A PALLET, THEY WILL BE MARKED AS SPECIFIED IN ARDEC DRAWING 12982865.



END ASSEMBLY

(2 REQD)



SPACER ASSEMBLY

(1 REQD)