

APPENDIX 175

CONTAINER, M621, EMPTY, UNITIZED 84 PER 40" X 48" PALLET (UNIT LOAD A), SEPARATOR FOR M621 CONTAINER, UNITIZED 672 PER 40" X 48" PALLET (UNIT LOAD B); APPROX M621 CONTAINER SIZE 13-3/4" L X 5-5/8" W X 14-3/8" H; APPROX SEPARATOR SIZE 11-7/8" L X 4-7/8" W X 9/16" H

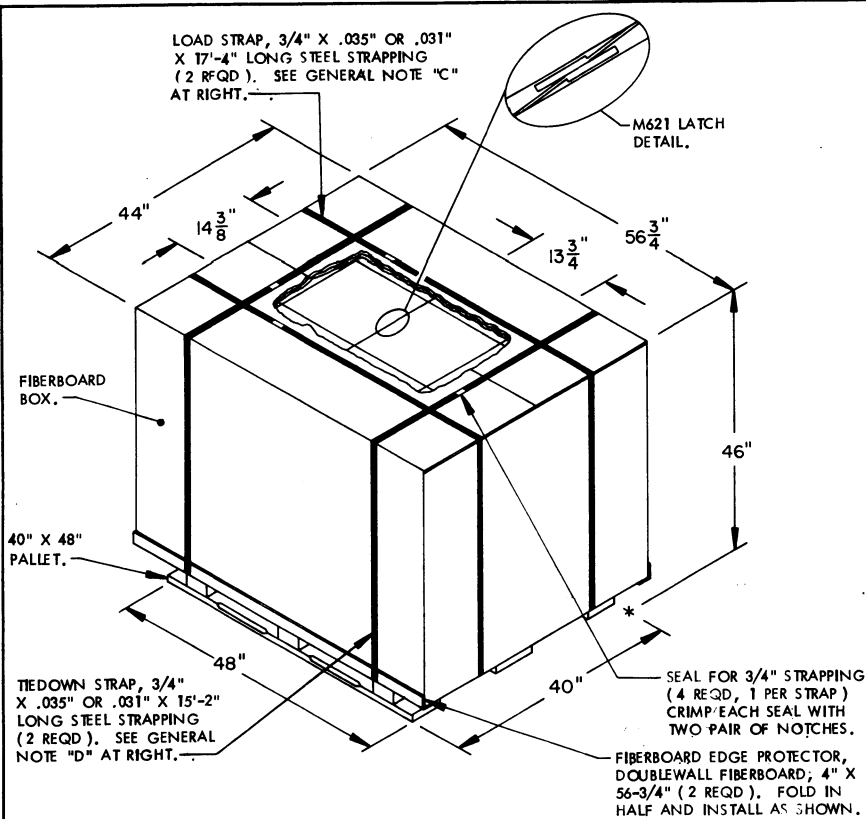
PALLET UNIT DATA							
ITEMS INCLUDED		HAZARD CLASSIFICATION				WEIGHT (LBS)	
NSN	DODIC	DOT CLASS	CG CLASS	QD CLASS	COMP GROUP	UNIT A	UNIT B
8140-01-121-9853	---	---	INERT	---	---	1,033	---
01-121-9853	---	---	INERT	---	---	1,117	---
---	---	---	INERT	---	---	---	643

NOTICE: THIS APPENDIX CANNOT STAND ALONE BUT MUST BE USED IN CONJUNCTION WITH THE BASIC UNITIZATION PROCEDURES DRAWING 19-48-4116-20PA1002.

* NOTE: WEIGHT INDICATES TOTAL UNIT WEIGHT FOR M621 CONTAINERS UNITIZED WITHOUT SEPARATORS INSTALLED.

REVISIONS				DRAFTSMAN 4	PROJ ENG LAE/WRF
				CHECKER GRG	LOG ENGRG OFFICE W.H. Ernst
				APPROVED, U.S. ARMY ARMAMENT, MUNITIONS AND CHEMICAL COMMAND R.M. Martin B.J. Johnson	
				APPROVED BY ORDER OF COMMANDING GENERAL, U.S. ARMY MATERIEL COMMAND (AMC) William H. Ernst U.S. ARMY DEFENSE AMMUNITION CENTER AND SCHOOL	
U.S. ARMY AMC DRAWING					
JANUARY 1988					
CLASS	DIVISION	DRAWING	FILE		
19	48	4116/175	20PA 1002		

DO NOT SCALE



PALLET UNIT A

SEE GENERAL NOTE "B" AT RIGHT.

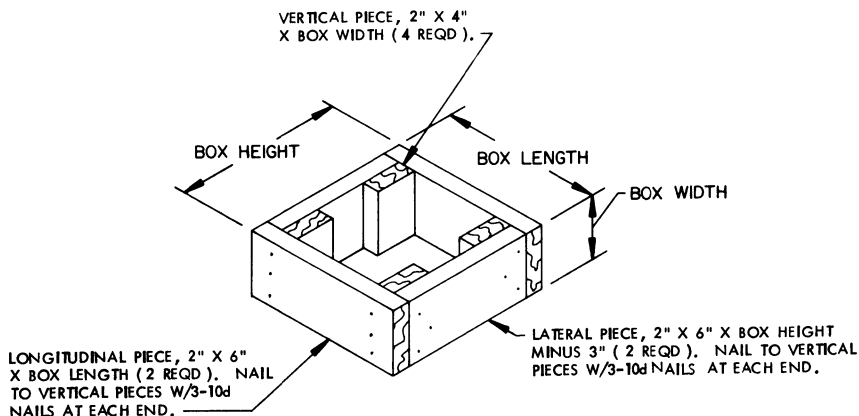
84 CONTAINERS M621 @ 11 LBS	924 LBS (APPROX)
DUNNAGE	29 LBS
PALLET	80 LBS
TOTAL WEIGHT	1,033 LBS (APPROX)
CUBE	66.5 CU FT (APPROX)

BILL OF MATERIAL (UNIT A)

PALLET, 40" X 48"	1 REQD	80 LBS
STEEL STRAPPING, 3/4"	65.00' REQD	4.64 LBS
SEAL FOR 3/4" STRAPPING	4 REQD	NIL
FIBERBOARD BOX	1 REQD	23 LBS
FIBERBOARD	3.15 SQ FT REQD	0.57 LBS

GENERAL NOTES

- A. THIS APPENDIX CANNOT STAND ALONE BUT MUST BE USED IN CONJUNCTION WITH THE BASIC UNITIZATION PROCEDURES DRAWING 19-48-4116-20PA1002. TO PRODUCE AN APPROVED UNIT LOAD, ALL PERTINENT PROCEDURES, SPECIFICATIONS AND CRITERIA SET FORTH WITHIN THE BASIC DRAWING WILL APPLY TO THE PROCEDURES DELINEATED IN THIS APPENDIX. ANY EXCEPTIONS TO THE BASIC PROCEDURES ARE SPECIFIED IN THIS APPENDIX.
- B. DIMENSIONS, CUBE AND WEIGHT OF A PALLET UNIT WILL VARY SLIGHTLY DEPENDING UPON THE ACTUAL DIMENSIONS OF THE BOXES AND THE WEIGHT OF THE SPECIFIC ITEM BEING UNITIZED.
- C. THE LOAD STRAPS MAY BE THREADED THROUGH THE STRAP SLOTS OF THE PALLET OR PRE-POSITIONED ON THE PALLET DECK PRIOR TO PLACING THE FIBERBOARD BOX ON THE PALLET. LOAD STRAPS MUST NOT BE TENSIONED AND SEALED UNTIL TIEDOWN STRAPS HAVE BEEN TENSIONED AND SEALED.
- D. INSTALL EACH TIEDOWN STRAP TO PASS UNDER THE TOP DECK/BOARDS OF THE PALLET AND TO BE LOCATED AS SHOWN. TIEDOWN STRAPS WILL BE TENSIONED AND SEALED PRIOR TO THE LOAD STRAPS.
- E. THE FOLLOWING AMC (DARCOM) DRAWINGS ARE APPLICABLE FOR OUTLOADING AND STORAGE OF THE ITEMS COVERED BY THIS APPENDIX.
 CARLOADING-----DRAWING 19-48-4115-5PA1002
 TRUCKLOADING----DRAWING 19-48-4117-11PA1003
 STORAGE-----DRAWING 19-48-4118-1-2-3-4-14-22PA1002
- F. FOR METHOD OF SECURING A STRAP CUTTER TO THE PALLET UNIT, SEE DARCOM DRAWING 19-48-4127-20P1000.
- G. THE STYLE 1 PALLET DELINEATED IN THE DETAIL AT LEFT NEED NOT HAVE CHAMFERS OR STRAP SLOTS AS SPECIFIED WITHIN MILITARY SPECIFICATION MIL-P-15011 WHEN USED FOR THE UNITIZATION OF THE ITEMS COVERED BY THIS APPENDIX.
- H. THE PALLET DEPICTED IN THE DETAIL AT LEFT WILL BE CONSTRUCTED AND ASSEMBLED IN ACCORDANCE WITH MILITARY SPECIFICATION MIL-P-15011 REQUIREMENTS FOR A STYLE 1, TYPE I, CLASS 1 PALLET WITH THE EXCEPTION THAT THE MATERIAL TO BE USED MAY BE WOODS FROM GROUPS 1, 2, OR 3 OF MIL-STD-731.
- J. THE FIBERBOARD BOX WILL BE CONSTRUCTED AND ASSEMBLED IN ACCORDANCE WITH FEDERAL SPECIFICATION PPP-B-640 REQUIREMENTS FOR A CLASS 2, STYLE E FIBERBOARD BOX WITH THE EXCEPTION THAT THE MATERIAL TO BE USED WILL BE CLASS WEATHER RESISTANT, VARIETY DW (DOUBLE WALL), GRADE VIIc FIBERBOARD FROM FEDERAL SPECIFICATION PPP-F-320.
- K. THE UNITIZATION PROCEDURES DEPICTED AT LEFT MAY BE USED TO UNITIZE EMPTY M621 CONTAINERS WITH OR WITHOUT SEPARATORS INSTALLED. THE UNITIZATION PROCEDURE DEPICTED ON PAGE 3 WILL BE USED IF THE SEPARATORS ARE TO BE SHIPPED INDEPENDENTLY OF THE M621 CONTAINERS. THE DETERMINATION TO SHIP THE SEPARATORS INDEPENDENTLY OF THE M621 CONTAINERS WILL BE MADE BY THE RESPONSIBLE COMMAND.
- L. **CAUTION:** THE M621 CONTAINER LATCHES WILL NOT BE ENGAGED. LATCHES MUST BE LEFT OPEN TO AVOID DAMAGE TO THE CONTAINER SEALS. SEE THE "M621 LATCH DETAIL" ABOVE.

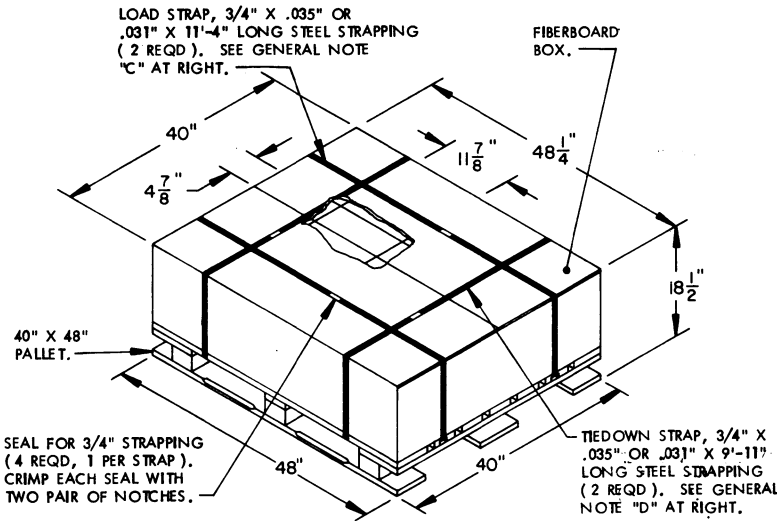


FILLER ASSEMBLY

(FOR MINUS ONE CONTAINER)

GENERAL NOTES

- A. THIS APPENDIX CANNOT STAND ALONE BUT MUST BE USED IN CONJUNCTION WITH THE BASIC UNITIZATION PROCEDURES DRAWING 19-48-4116-20PA1002. TO PRODUCE AN APPROVED UNIT LOAD, ALL PERTINENT PROCEDURES, SPECIFICATIONS AND CRITERIA SET FORTH WITHIN THE BASIC DRAWING WILL APPLY TO THE PROCEDURES DELINEATED IN THIS APPENDIX. ANY EXCEPTIONS TO THE BASIC PROCEDURES ARE SPECIFIED IN THIS APPENDIX.
- B. DIMENSIONS, CUBE AND WEIGHT OF A PALLET UNIT WILL VARY SLIGHTLY DEPENDING UPON THE ACTUAL DIMENSIONS OF THE BOXES AND THE WEIGHT OF THE SPECIFIC ITEM BEING UNITIZED.
- C. THE LOAD STRAPS MAY BE THREADED THROUGH THE STRAP SLOTS OF THE PALLET OR PRE-POSITIONED ON THE PALLET DECK PRIOR TO PLACING THE FIBERBOARD BOX ON THE PALLET. LOAD STRAPS MUST NOT BE TENSIONED AND SEALED UNTIL TIEDOWN STRAPS HAVE BEEN TENSIONED AND SEALED.
- D. INSTALL EACH TIEDOWN STRAP TO PASS UNDER THE TOP DECK BOARDS OF THE PALLET AND TO BE LOCATED AS SHOWN. TIEDOWN STRAPS WILL BE TENSIONED AND SEALED PRIOR TO THE LOAD STRAPS.
- E. THE FOLLOWING AMC (DARCOM) DRAWINGS ARE APPLICABLE FOR OUTLOADING AND STORAGE OF THE ITEMS COVERED BY THIS APPENDIX.
 CARLOADING----- DRAWING 19-48-4115-5PA1002
 TRUCKLOADING ---- DRAWING 19-48-4117-11PA1003
 STORAGE ----- DRAWING 19-48-4118-1-2-3-4-14-22PA1002
- F. FOR METHOD OF SECURING A STRAP CUTTER TO THE PALLET UNIT, SEE DARCOM DRAWING 19-48-4127-20P1000.
- G. THE STYLE 1 PALLET DELINEATED IN THE DETAIL AT LEFT NEED NOT HAVE CHAMFERS OR STRAP SLOTS AS SPECIFIED WITHIN MILITARY SPECIFICATION MIL-P-15011 WHEN USED FOR THE UNITIZATION OF THE ITEMS COVERED BY THIS APPENDIX.
- H. THE PALLET DEPICTED IN THE DETAIL AT LEFT WILL BE CONSTRUCTED AND ASSEMBLED IN ACCORDANCE WITH MILITARY SPECIFICATION MIL-P-15011 REQUIREMENTS FOR A STYLE 1, TYPE I, CLASS 1 PALLET WITH THE EXCEPTION THAT THE MATERIAL TO BE USED MAY BE WOODS FROM GROUPS 1, 2, OR 3 OF MIL-STD-731.
- J. THE FIBERBOARD BOX WILL BE CONSTRUCTED AND ASSEMBLED IN ACCORDANCE WITH FEDERAL SPECIFICATION PPP-B-640 REQUIREMENTS FOR A CLASS 2, STYLE E FIBERBOARD BOX WITH THE EXCEPTION THAT THE MATERIAL TO BE USED WILL BE CLASS WEATHER RESISTANT, VARIETY DW (DOUBLE WALL), GRADE V11c FIBERBOARD FROM FEDERAL SPECIFICATION PPP-F-320.
- K. PLYWOOD FILLERS, 1/2" X 11-7/8" X 4-7/8", WILL BE USED AS FILLER ASSEMBLIES TO REPLACE OMITTED SEPARATORS AS NEEDED.



PALLET UNIT B

SEE GENERAL NOTE "B" AT RIGHT.

672 SEPARATORS @ 13/16 LBS -----	546 LBS (APPROX)
DUNNAGE -----	17 LBS
PALLET -----	80 LBS
TOTAL WEIGHT -----	643 LBS (APPROX)
CUBE -----	20.7 CU FT (APPROX)

BILL OF MATERIAL (UNIT B)

PALLET, 40" X 48" -----	1 REQD -----	80 LBS
STEEL STRAPPING, 3/4" -----	42.50' REQD -----	3.04 LBS
SEAL FOR 3/4" STRAPPING -----	4 REQD -----	NIL
FIBERBOARD BOX -----	1 REQD -----	13 LBS

