

# APPENDIX 171B

## UNITIZATION PROCEDURES FOR BOXED AMMUNITION AND COMPONENTS ON 4-WAY ENTRY PALLETS

ALARM UNIT, CHEMICAL AGENT, AUTOMATIC, M42, PACKED 1 PER PPP-B-621 WOODEN BOX OR PPP-B-601 WOODEN BOX, OR PPP-B-585 WIREBOUND BOX BOX UNITIZED 84 PPP-B-621 BOXES PER 40" X 48" PALLET (UNIT LOAD A), OR 112 PPP-B-601 BOXES PER 40 X 48" PALLET (UNIT LOAD B), OR 140 PPP-B-585 BOXES PER 40" X 48" PALLET (UNIT LOAD C); APPROX PPP-B-621 BOX SIZE 13-15/16" L X 9-1/8" W X 6-7/8" H; APPROX PPP-B-601 BOX SIZE 13-3/16" L X 9-7/8" W X 5-7/8" H; APPROX PPP-B-585 BOX SIZE 12-13/16" L X 8-1/4" W X 6" H

NOTICE: THIS APPENDIX CANNOT STAND ALONE BUT MUST BE USED IN CONJUNCTION WITH THE BASIC UNITIZATION PROCEDURES DRAWING 19-48-4116-20PA1002.

DISTRIBUTION STATEMENT A.

APPROVED FOR PUBLIC RELEASE:  
DISTRIBUTION IS UNLIMITED.

U. S. ARMY MATERIEL COMMAND DRAWING							
APPROVED, U. S. ARMY INDUSTRIAL OPERATIONS COMMAND  <i>David A. Pinkbault</i> <i>Ernest</i> AMSTA-AR-ESK      AMSIO-TMJ	DRAFTSMAN BETTY J. KUNDERT ENGINEER MICHAEL S. BARTOSIAK	SUPPLY ENGINEERING DIVISION <i>T. J. Michels</i> TRANSPORTATION ENGINEERING DIVISION <i>W. J. Jurek</i> VALIDATION ENGINEERING DIVISION <i>W. J. Jurek</i>					
APPROVED BY ORDER OF COMMANDING GENERAL, U. S. ARMY MATERIEL COMMAND  <i>William Ernest</i> U. S. ARMY DEFENSE AMMUNITION CENTER	LOGISTICS ENGINEERING OFFICE <i>William Ernest</i> APRIL 1985						
REVISION NO. 1      DECEMBER 1998	CLASS 19	DIVISION 48	<table border="1" style="width: 100%; border-collapse: collapse;"> <tr> <th style="width: 25%;">DRAWING</th> <th style="width: 25%;">FILE</th> </tr> <tr> <td style="text-align: center;">4116/ 171B</td> <td style="text-align: center;">20PA 1002</td> </tr> </table>	DRAWING	FILE	4116/ 171B	20PA 1002
DRAWING	FILE						
4116/ 171B	20PA 1002						
SEE THE REVISION LISTING ON PAGE 2							

DO NOT SCALE

PALLET UNIT DATA						
ITEMS INCLUDED		HAZARD CLASS AND DIVISION		APPROX WEIGHT LBS		
NSN	DDDIC	DD CLASS	COMP GROUP			
6665-00-859-2215	----	INERT		1,185	1,181	1,730

- HAZARD CLASSIFICATION DATA CONTAINED IN THE ABOVE CHART IS FOR GUIDANCE AND INFORMATIONAL PURPOSES ONLY. VERIFICATION OF THE SPECIFIED DATA SHOULD BE MADE BY CONSULTING THE MOST RECENT JOINT HAZARD CLASSIFICATION SYSTEM LISTING OR OTHER APPROVED LISTING(S).

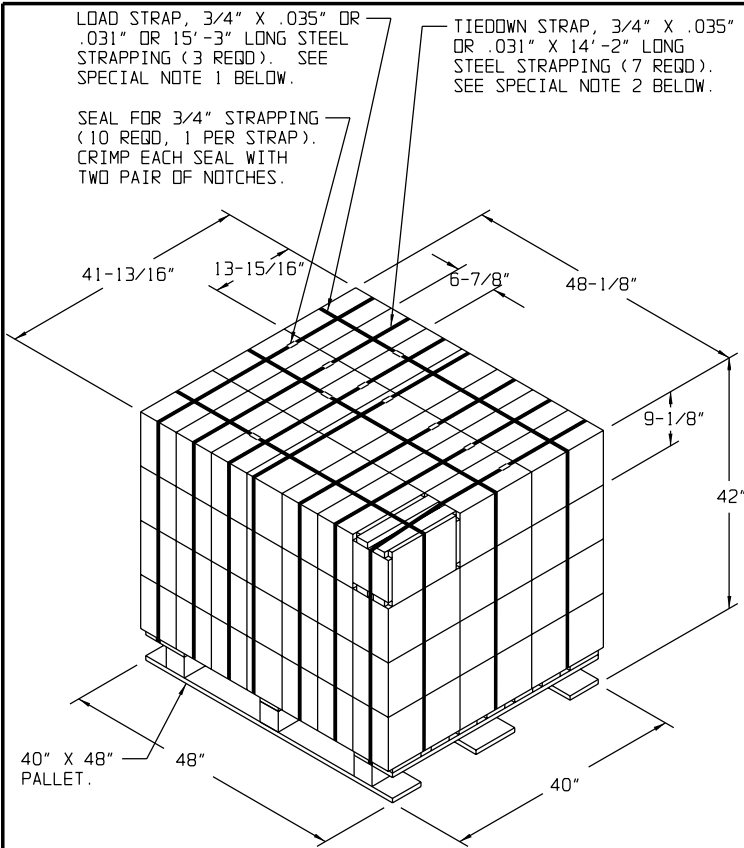
#### REVISION

REVISION NO. 1, DATED DECEMBER 1998, CONSISTS OF:

1. CHANGING THE BOX SIZES.
2. CHANGING THE QUANTITY PER PACK.
3. ADDING WIREBOUND BOX PPP-B-585.
4. DELETING GENERAL NOTE RELATING TO STRAP CUTTER AND RE-LETTERING OTHER GENERAL NOTES.

GENERAL NOTES

- A. THIS APPENDIX CANNOT STAND ALONE BUT MUST BE USED IN CONJUNCTION WITH THE BASIC UNITIZATION PROCEDURES DRAWING 19-48-4116-20PA1002. TO PRODUCE AN APPROVED UNIT LOAD, ALL PERTINENT PROCEDURES, SPECIFICATIONS AND CRITERIA SET FORTH WITHIN THE BASIC DRAWING WILL APPLY TO THE PROCEDURES DELINEATED IN THIS APPENDIX. ANY EXCEPTIONS TO THE BASIC PROCEDURES ARE SPECIFIED IN THIS APPENDIX.
- B. DIMENSIONS, CUBE AND WEIGHT OF A PALLET UNIT WILL VARY SLIGHTLY DEPENDING UPON THE ACTUAL DIMENSIONS OF THE BOXES AND THE WEIGHT OF THE SPECIFIC ITEM BEING UNITIZED.
- C. THE FOLLOWING AMC DRAWINGS ARE APPLICABLE FOR OUTLOADING AND STORAGE OF THE ITEMS COVERED BY THIS APPENDIX.
  - CARLOADING - - - - 19-48-4115-5PA1002
  - TRUCKLOADING - - - - 19-48-4117-11PA1003
  - STORAGE - - - - 19-48-4118-1-2-3-4-14-22PA1002
  - END OPENING ISO CONTAINER - - - - 19-48-4153-15PA1002
  - MILVAN - - - - 19-48-4166-15PA1003
  - SIDE OPENING ISO CONTAINER - - - - 19-48-4267-15PA1009
- D. IF ITEMS COVERED HEREIN ARE UNITIZED PRIOR TO ISSUANCE OF THIS APPENDIX, THE BOXES NEED NOT BE REUNITIZED SOLELY TO CONFORM TO THIS APPENDIX.
- E. THE UNITIZATION PROCEDURES DEPICTED HEREIN MAY ALSO BE USED FOR UNITIZING ALARM, CHEMICAL AGENT, WHEN IDENTIFIED BY DIFFERENT NATIONAL STOCK NUMBERS (NSN) THAN WHAT IS SHOWN ON PAGE 2, PROVIDED THE BOX PACK DOES NOT VARY FROM WHAT IS DELINEATED HEREIN. THE EXPLOSIVE CLASSIFICATION OF OTHER ITEMS MAY BE DIFFERENT THAN WHAT IS SHOWN.
- F. THE STYLE 1 PALLET DELINEATED IN THE DETAIL AT LEFT, AND ON PAGES 4 AND 5, NEED NOT HAVE CHAMFERS OR STRAP SLOTS AS SPECIFIED WITHIN MILITARY SPECIFICATION MIL-P-15011 WHEN USED FOR THE UNITIZATION OF ITEMS COVERED BY THIS APPENDIX.



PALLET UNIT A

SEE GENERAL NOTE "B" AT RIGHT.

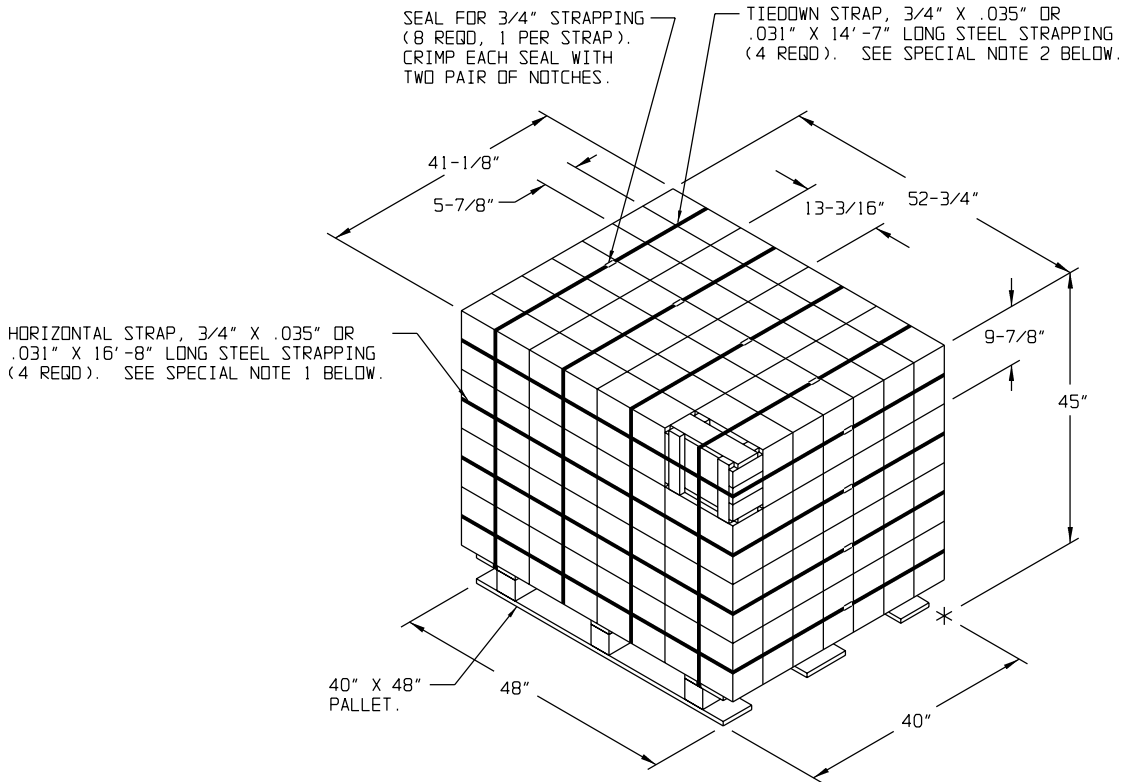
84 BOXES OF ALARM UNIT (1 PER BOX) AT 13 LBS	-----	1,092 LBS (APPROX)
DUNNAGE	-----	13 LBS
PALLET	-----	80 LBS
<hr/>		
TOTAL WEIGHT	-----	1,185 LBS (APPROX)
CUBE	-----	48.9 CU FT (APPROX)

BILL OF MATERIAL

PALLET, 40" X 48"	-----	1 REQD	-----	80 LBS
STEEL STRAPPING, 3/4"	-----	144.92' REQD	-----	12.94 LBS
SEAL FOR 3/4" STRAPPING	-----	10 REQD	-----	NIL

SPECIAL NOTES

- 1. THE LOAD STRAPS MAY BE THREADED THROUGH THE STRAP SLOTS OF A PALLET OR PRE-POSITIONED ON THE PALLET DECK PRIOR TO PLACING BOXES ON THE PALLET. LOAD STRAPS MUST BE TENSIONED AND SEALED PRIOR TO APPLICATION OF TIEDOWN STRAPS.
- 2. INSTALL EACH TIEDOWN STRAP TO PASS UNDER THE DECK/ STRINGER BOARDS OF THE PALLET AND TO BE LOCATED AS SHOWN. TIEDOWN STRAPS WILL NOT BE APPLIED UNTIL THE LOAD STRAPS HAVE BEEN TENSIONED AND SEALED.



**PALLET UNIT B**

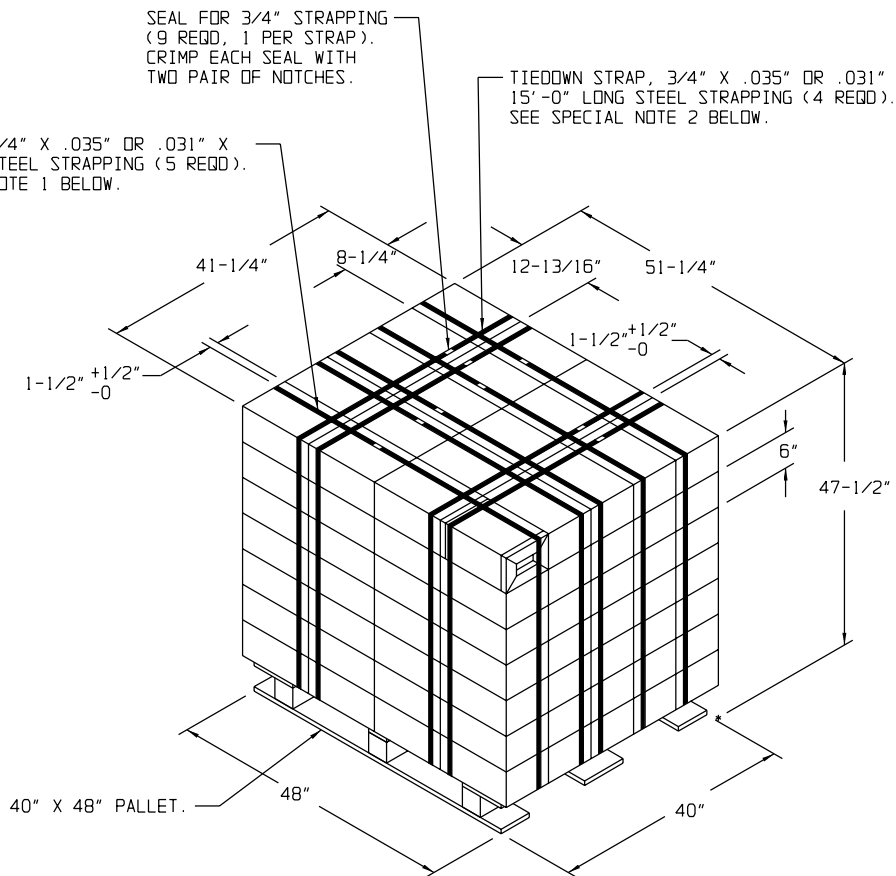
SEE GENERAL NOTE "B" ON PAGE 3.

112 BOXES OF ALARM UNITS (1 PER BOX) AT 13 LBS	-----	1,456 LBS (APPROX)
DUNNAGE	-----	12 LBS
PALLET	-----	80 LBS
<hr/>		
TOTAL WEIGHT	-----	1,548 LBS (APPROX)
CUBE	-----	56.5 CU FT (APPROX)

BILL OF MATERIAL			
PALLET, 40" X 48"	-----	1 REQD	--- 80 LBS
STEEL STRAPPING, 3/4"	-----	112.58' REQD	- 11.16 LBS
SEAL FOR 3/4" STRAPPING	-----	8 REQD	--- NIL

**SPECIAL NOTES**

1. INSTALL EACH HORIZONTAL STRAP TO ENCIRCLE A LAYER OF BOXES ON THE PALLET. NOTE THAT THE STRAPS WILL BE LOCATED AS SHOWN. HORIZONTAL STRAPS MUST BE TENSIONED AND SEALED PRIOR TO THE APPLICATION OF TIEDOWN STRAPS.
2. INSTALL EACH TIEDOWN STRAP TO PASS UNDER THE DECK/ STRINGER BOARDS OF THE PALLET AND TO BE LOCATED AS SHOWN. TIEDOWN STRAPS WILL NOT BE APPLIED UNTIL THE HORIZONTAL STRAPS HAVE BEEN TENSIONED AND SEALED.



PALLET UNIT C

SEE GENERAL NOTE "B" ON PAGE 3.

140 BOXES OF ALARM UNIT (1 PER BOX) AT 13 LBS	-----	1,820 LBS (APPROX)
DUNNAGE	-----	13 LBS
PALLET	-----	80 LBS

TOTAL WEIGHT	-----	1,913 LBS (APPROX)
CUBE	-----	58.1 CU FT (APPROX)

BILL OF MATERIAL

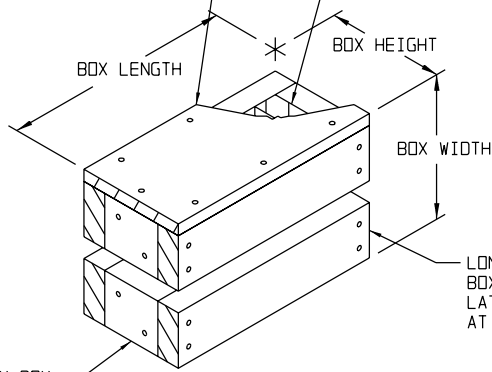
PALLET, 40" X 48"	-----	1 REQD	-----	80 LBS
STEEL STRAPPING, 3/4"	-----	144.92' REQD	-----	12.94 LBS
SEAL FOR 3/4" STRAPPING	-----	10 REQD	-----	NIL

SPECIAL NOTES

1. THE LOAD STRAPS MUST BE PRE-POSITIONED ON THE PALLET DECK PRIOR TO PLACING BOXES ON THE PALLET. LOAD STRAPS MUST BE TENSIONED AND SEALED PRIOR TO APPLICATION OF TIEDOWN STRAPS.
2. INSTALL EACH TIEDOWN STRAP TO PASS UNDER THE TOP DECK BOARDS OF THE PALLET. NOTE THAT THE STRAPS WILL BE LOCATED AS SHOWN, NEAR THE SIDE CLEATS OF THE END PANELS OF THE BOX. TIEDOWN STRAPS WILL NOT BE APPLIED UNTIL THE LOAD STRAPS HAVE BEEN TENSIONED AND SEALED.

TIE PIECE, 1" X 8" (RIPPED TO FIT) X BOX LENGTH (1 REQD). NAIL TO LONGITUDINAL PIECES W/3-6d NAILS EACH AND TO LATERAL PIECES W/1-6d NAILS EACH.

VERTICAL PIECE, 2" X 4" X BOX WIDTH MINUS 3/4" (2 REQD).

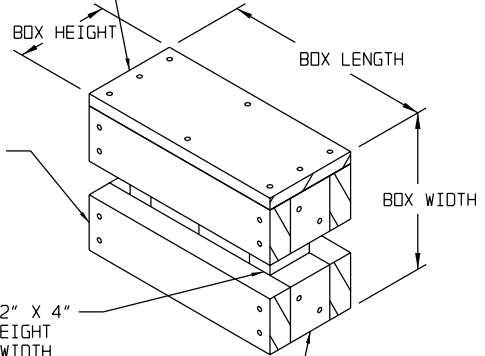


LONGITUDINAL PIECE, 2" X 4" X BOX LENGTH (4 REQD). NAIL TO LATERAL PIECE W/2-10d NAILS AT EACH END.

LATERAL PIECE, 2" X 4" X BOX HEIGHT MINUS 3" (4 REQD). NAIL TO VERTICAL PIECE W/2-10d NAILS.

FILLER ASSEMBLY UNIT A

TIE PIECE, 1" X 8" (RIPPED TO FIT) X BOX LENGTH (1 REQD). NAIL TO LONGITUDINAL PIECES W/3-6d NAILS EACH AND TO LATERAL PIECES W/1-6d NAILS EACH.



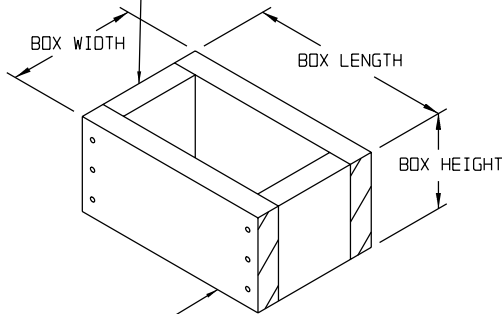
LONGITUDINAL PIECE, 2" X 4" X BOX LENGTH (4 REQD). NAIL TO LATERAL PIECES W/2-10d NAILS AT EACH END.

VERTICAL PIECE, 2" X 4" (RIPPED TO BOX HEIGHT MINUS 3") X BOX WIDTH MINUS 3/4" (2 REQD).

LATERAL PIECE, 2" X 4" X BOX HEIGHT MINUS 3" (4 REQD). NAIL TO VERTICAL PIECE W/2-10d NAILS.

FILLER ASSEMBLY UNIT B

LATERAL PIECE, 2" X 8" (RIPPED TO BOX HEIGHT) X BOX WIDTH MINUS 3" (2 REQD).



LONGITUDINAL PIECE, 2" X 8" (RIPPED TO BOX HEIGHT) X BOX LENGTH (2 REQD). NAIL TO LATERAL PIECES W/3-10d NAILS AT EACH END.

FILLER ASSEMBLY UNIT C