

APPENDIX 163

UNITIZATION PROCEDURES FOR BOXED AMMUNITION AND COMPONENTS ON 4-WAY ENTRY PALLETS

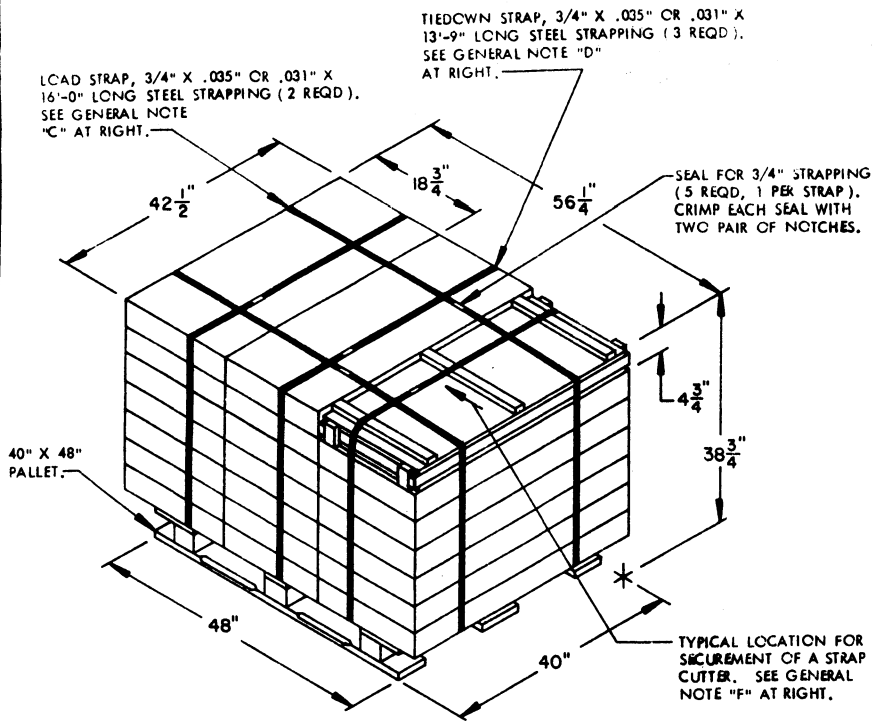
TARGET, FALSE, MK2-I, PACKED 5 PER WOOD BOX,
UNITIZED 21 BOXES PER 40" X 48" PALLET; APPROX
BOX SIZE 42 $\frac{1}{2}$ " L X 18 $\frac{3}{4}$ " W X 4 $\frac{3}{4}$ " H

PALLET UNIT DATA						
ITEMS INCLUDED		HAZARD CLASSIFICATION				WEIGHT (LBS)
NSN	DODIC	DOT CLASS	CG CLASS	QD CLASS	COMP GROUP	
1370-00-115-5447	L125	FS	II-H	4.3	L	1,262

NOTICE: THIS APPENDIX CANNOT STAND ALONE BUT MUST BE USED IN CONJUNCTION WITH THE BASIC UNITIZATION PROCEDURES DRAWING 19-48-4116-20PA1002.

REVISIONS			DRAFTSMAN <i>[Signature]</i>	PROJ. ENG. <i>[Signature]</i>
			CHECKER <i>[Signature]</i>	LOG. EMPLOY. OFFICE <i>[Signature]</i>
APPROVED: U.S. ARMY ARMAMENT MATERIEL HEADQUARTERS COMMAND				
			<i>[Signature]</i> DIRECTOR	<i>[Signature]</i> USARV CMDR
APPROVED BY ORDER OF COMMANDING GENERAL, U.S. ARMY MATERIEL DEVELOPMENT AND READINESS COMMAND (DARCOM) <i>[Signature]</i> U.S. ARMY DEFENSE AMMUNITION CENTER AND SCHOOL				
U.S. ARMY DARCOM DRAWING				
APRIL 1982				
	CLASS	DIVISION	DRAWING	FILE
	19	48	4116/ 163	20PA 1002

DO NOT SCALE



GENERAL NOTES

- A. THIS APPENDIX CANNOT STAND ALONE BUT MUST BE USED IN CONJUNCTION WITH THE BASIC UNITIZATION PROCEDURES DRAWING 19-48-4116-20PA1002. TO PRODUCE AN APPROVED UNIT LOAD, ALL PERTINENT PROCEDURES, SPECIFICATIONS AND CRITERIA SET FORTH WITHIN THE BASIC DRAWING WILL APPLY TO THE PROCEDURES DELINEATED IN THIS APPENDIX. ANY EXCEPTIONS TO THE BASIC PROCEDURES ARE SPECIFIED IN THIS APPENDIX.
- B. DIMENSIONS, CUBE AND WEIGHT OF A PALLET UNIT WILL VARY SLIGHTLY DEPENDING UPON THE ACTUAL DIMENSIONS OF THE BOXES AND THE WEIGHT OF THE SPECIFIC ITEM BEING UNITIZED.
- C. THE LOAD STRAPS WILL BE THREADED THROUGH THE STRAP SLOTS OF A PALLET. LOAD STRAPS MUST BE TENSIONED AND SEALED PRIOR TO APPLICATION OF TIEDOWN STRAPS.
- D. INSTALL EACH TIEDOWN STRAP TO PASS UNDER THE TOP DECK BOARDS OF THE PALLET AND TO BE LOCATED AS SHOWN. TIEDOWN STRAPS WILL NOT BE APPLIED UNTIL THE LOAD STRAPS HAVE BEEN TENSIONED AND SEALED.
- E. THE FOLLOWING DARCOM DRAWINGS ARE APPLICABLE FOR OUTLOADING AND STORAGE OF THE ITEMS COVERED BY THIS APPENDIX.

CARLOADING-----	DRAWING 19-48-4115-5PA1002
TRUCKLOADING-----	DRAWING 19-48-4117-11PA1003
STORAGE-----	DRAWING 19-48-4118-1-2-3-4-14-22PA1002
- F. FOR METHOD OF SECURING A STRAP CUTTER TO THE PALLET UNIT, SEE DARCOM DRAWING 19-48-4127-20P1000.
- G. IF ITEMS COVERED HEREIN ARE UNITIZED PRIOR TO ISSUANCE OF THIS APPENDIX, THE BOXES NEED NOT BE REUNITIZED SOLELY TO CONFORM TO THIS APPENDIX.
- H. THE UNITIZATION PROCEDURES DEPICTED HEREIN MAY ALSO BE USED FOR UNITIZING FALSE TARGETS WHEN IDENTIFIED BY DIFFERENT NATIONAL STOCK NUMBERS (NSN) THAN WHAT IS SHOWN ON THE TITLE PAGE, PROVIDED THE BOX PACK DOES NOT VARY FROM WHAT IS DELINEATED HEREIN. THE EXPLOSIVE CLASSIFICATION OF OTHER ITEMS MAY BE DIFFERENT THAN WHAT IS SHOWN.
- J. THE WIDTH DIMENSION OF THE PALLET UNIT DEPICTED AT LEFT IS AN EXCEPTION TO THE CRITERIA SPECIFIED WITHIN THE BASIC PROCEDURES DRAWING. HOWEVER, THE EXCEPTION IS NECESSARY, FOR THE AMMUNITION PACK, COVERED BY THIS APPENDIX, TO MOST EFFECTIVELY GET AN ACCEPTABLE, COMPACT AND SOUND PALLET UNIT.

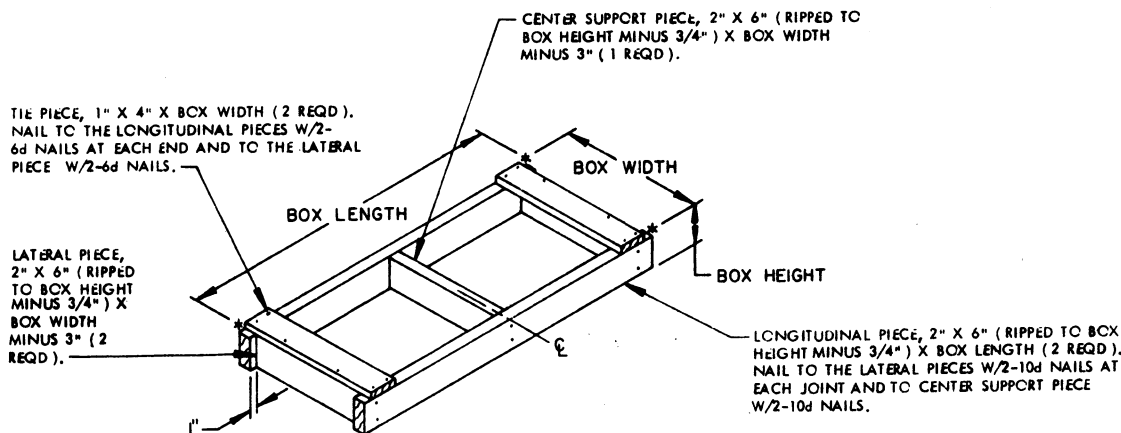
PALLET UNIT

SEE GENERAL NOTE "B" AT RIGHT.

21 BOXES OF TARGET (5 PER BOX)	= 56 LBS	-----	1,176 LBS (APPROX)
DUNNAGE	-----	-----	6 LBS
PALLET	-----	-----	80 LBS
TOTAL WEIGHT-----			1,262 LBS (APPROX)
CUBE-----			53.6 CU FT (APPROX)

BILL OF MATERIAL

PALLET, 40" X 48"	-----1 REQD-----	80 LBS
STEEL STRAPPING, 3/4"	-----73.25 REQD-----	5.23 LBS
SEAL FOR 3/4" STRAPPING	-----5 REQD-----	NIL



FILLER ASSEMBLY

(FOR MINUS ONE BOX)