

# APPENDIX 134

## UNITIZATION PROCEDURES FOR BOXED AMMUNITION AND COMPONENTS ON 4-WAY ENTRY PALLETS

IGNITION CYLINDER, FLAME THROWER, PACKED  
100 PER WOODEN BOX, UNITIZED 45 BOXES PER  
40" X 48" PALLET; APPROX BOX SIZE 16" L X  
14 1/4" W X 9 1/2" H

PALLET UNIT DATA						
ITEMS INCLUDED		HAZARD CLASSIFICATION <sup>①</sup>				WEIGHT (LBS)
NSN	DODIC	DOT CLASS	CG CLASS	QD CLASS	COMP GROUP	
1375-00-219-8583	M680	C	I	1.4	S	2,518

**NOTICE:** THIS APPENDIX CANNOT STAND ALONE BUT MUST BE USED IN CONJUNCTION WITH THE BASIC UNITIZATION PROCEDURES DRAWING 19-48-4116-20PA1002.

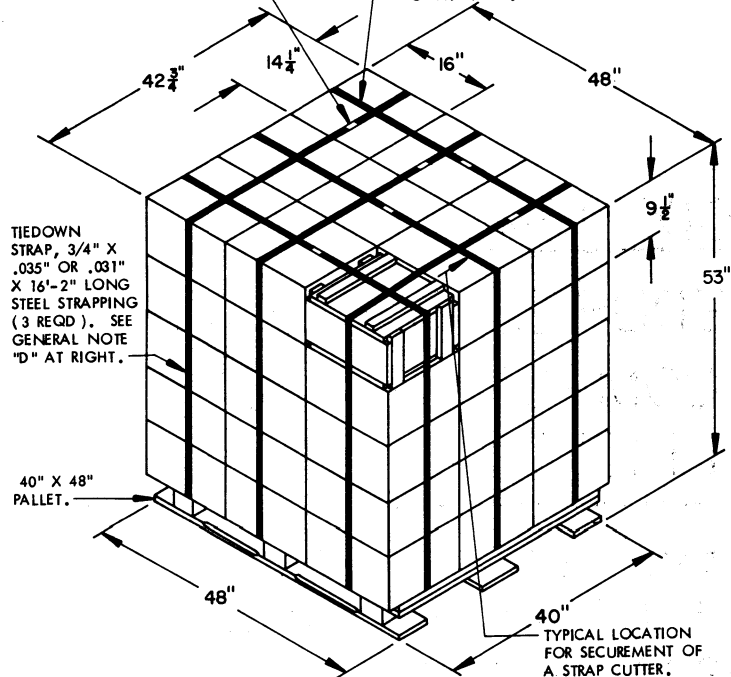
<sup>①</sup>HAZARD CLASSIFICATION DATA CONTAINED IN THE ABOVE CHART IS FOR GUIDANCE AND INFORMATIONAL PURPOSES ONLY. VERIFICATION OF THE SPECIFIED DATA SHOULD BE MADE BY CONSULTING THE MOST RECENT JOINT HAZARD CLASSIFICATION SYSTEM LISTING OR OTHER APPROVED LISTING(S).

REVISIONS				DRAFTSMAN <i>RSH</i>	PROJ ENG <i>J.B.F./MWR</i>
				CHECKER <i>RSH</i>	LTC ENGINE OFFICER <i>[Signature]</i>
APPROVED, U. S. ARMY ARMAMENT, MUNITIONS AND CHEMICAL COMMAND					
			<i>[Signature]</i> DRSNG - LEP		<i>[Signature]</i> DRSNG - TSD
APPROVED BY ORDER OF COMMANDING GENERAL, U. S. ARMY MATERIEL DEVELOPMENT AND READINESS COMMAND (DARCOM)					
<i>[Signature]</i> U. S. ARMY DEFENSE AMMUNITION CENTER AND SCHOOL					
<b>U. S. ARMY DARCOM DRAWING</b>					
<b>NOVEMBER 1983</b>					
CLASS	DIVISION	DRAWING	FILE		
<b>19</b>	<b>48</b>	<b>4116/134</b>	<b>20PA 1002</b>		

**DO NOT SCALE**

SEAL FOR 3/4" STRAPPING ( 6 REQD, 1 PER STRAP). CRIMP EACH SEAL WITH TWO PAIR OF NOTCHES.

LOAD STRAP, 3/4" X .035" OR .031" X 17'-0" LONG STEEL STRAPPING ( 3 REQD ). SEE GENERAL NOTE "C" AT RIGHT.



**PALLET UNIT**

SEE GENERAL NOTE "B" AT RIGHT.

45 BOXES OF CYLINDER IGNITIONS ( 100 PER BOX ) @ 54 LBS ----- 2,430 LBS ( APPROX )  
 DUNNAGE ----- 8 LBS  
 PALLET ----- 80 LBS

TOTAL WEIGHT ----- 2,518 LBS ( APPROX )  
 CUBE ----- 62.9 CU FT ( APPROX )

**GENERAL NOTES**

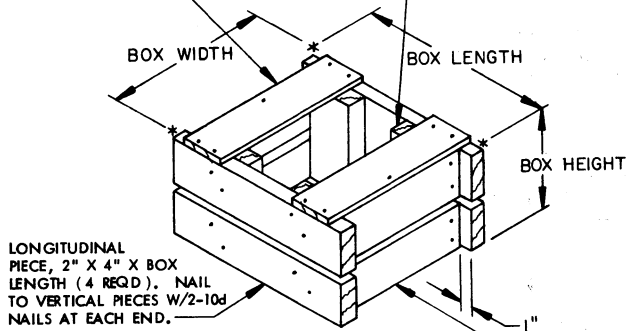
- A. THIS APPENDIX CANNOT STAND ALONE BUT MUST BE USED IN CONJUNCTION WITH THE BASIC UNITIZATION PROCEDURES DRAWING 19-48-4116-20PA1002. TO PRODUCE AN APPROVED UNIT LOAD, ALL PERTINENT PROCEDURES, SPECIFICATIONS AND CRITERIA SET FORTH WITHIN THE BASIC DRAWING WILL APPLY TO THE PROCEDURES DELINEATED IN THIS APPENDIX. ANY EXCEPTIONS TO THE BASIC PROCEDURES ARE SPECIFIED IN THIS APPENDIX.
- B. DIMENSIONS, CUBE AND WEIGHT OF A PALLET UNIT WILL VARY SLIGHTLY DEPENDING UPON THE ACTUAL DIMENSIONS OF THE BOXES AND THE WEIGHT OF THE SPECIFIC ITEM BEING UNITIZED.
- C. THE LOAD STRAPS WILL BE PRE-POSITIONED ON THE PALLET DECK PRIOR TO PLACING BOXES ON THE PALLET.
- D. INSTALL EACH TIEDOWN STRAP TO PASS UNDER THE TOP DECK BOARDS OF THE PALLET AND TO BE LOCATED AS SHOWN. TIEDOWN STRAPS WILL BE TENSIONED AND SEALED PRIOR TO LOAD STRAPS.
- E. THE FOLLOWING DARCOM DRAWINGS ARE APPLICABLE FOR OUTLOADING AND STORAGE OF THE ITEMS COVERED BY THIS APPENDIX.
  - CARLOADING ----- DRAWING 19-48-4115-5PA1002
  - TRUCKLOADING ----- DRAWING 19-48-4117-11PA1003
  - STORAGE ----- DRAWING 19-48-4118-1-2-3-4-14-22PA1002
- F. FOR METHOD OF SECURING A STRAP CUTTER TO THE PALLET UNIT, SEE DARCOM DRAWING 19-48-4127-20P1000.
- G. IF ITEMS COVERED HEREIN ARE UNITIZED PRIOR TO ISSUANCE OF THIS APPENDIX, THE BOXES NEED NOT BE REUNITIZED SOLELY TO CONFORM TO THIS APPENDIX.
- H. THE UNITIZATION PROCEDURES DEPICTED HEREIN MAY ALSO BE USED FOR UNITIZING CYLINDER IGNITIONS WHEN IDENTIFIED BY DIFFERENT NATIONAL STOCK NUMBERS ( NSN ) THAN WHAT IS SHOWN ON THE TITLE PAGE, PROVIDED THE BOX PACK DOES NOT VARY FROM WHAT IS DELINEATED HEREIN. THE EXPLOSIVE CLASSIFICATION OF OTHER ITEMS MAY BE DIFFERENT THAN WHAT IS SHOWN.
- J. WHEN THE UNIT LOAD DEPICTED AT LEFT IS TO BE USED FOR UNITIZING MARINE CORPS AMMUNITION, ONE LAYER OF BOXES MUST BE OMITTED, TIEDOWN STRAP LENGTHS MUST BE DECREASED TO 14'-7", AND LOAD STRAP LENGTHS MUST BE DECREASED TO 15'-5". THIS WILL RESULT IN AN OVERALL UNIT HEIGHT OF 43'-1/2", A GROSS UNIT WEIGHT OF 2,031 LBS, AND A UNIT CUBE OF 51.7 CU FT. ADDITIONALLY, THE UNIT LOAD MAY BE MODIFIED AS DESCRIBED WHEN BEING SHIPPED BY MILVAN OR COMMERCIAL INTERMODAL FREIGHT CONTAINER, CONVENTIONAL VAN TRAILER OR CONVENTIONAL OR HIGH-CAPACITY BOXCAR. THE DETERMINATION TO REDUCE THE LOAD BY A LAYER FOR TRANSPORTATION WILL BE MADE BY THE RESPONSIBLE COMMAND AND WILL BE BASED UPON ECONOMICS OF TRANSPORTATION AND HANDLING.

**BILL OF MATERIAL**

PALLET, 40" X 48"	1 REQD	80 LBS
STEEL STRAPPING, 3/4"	99.50 REQD	7.12 LBS
SEAL FOR 3/4" STRAPPING	6 REQD	NIL

TIE PIECE, 1" X 4" X BOX WIDTH ( 2 REQD ). NAIL TO LONGITUDINAL PIECES W/2-6d NAILS AT EACH END AND TO LATERAL PIECES W/1-6d NAIL.

VERTICAL PIECE, 2" X 4" X BOX HEIGHT MINUS 3/4" ( 4 REQD ).



**FILLER ASSEMBLY**

( FOR MINUS ONE BOX )