

# APPENDIX 12IN

## UNITIZATION PROCEDURES FOR BOXED AMMUNITION AND COMPONENTS ON 4-WAY ENTRY PALLETS

CAP, BLASTING, PACKED 10,000 PER WOODEN BOX,  
UNITIZED 12 BOXES PER 35" X 45½" PALLET;  
APPROX BOX SIZE 22¾" L X 17⅛" W X 14" H

PALLET UNIT DATA						
ITEMS INCLUDED		HAZARD CLASSIFICATION				WEIGHT (LBS)
NSN	DODIC	DOT CLASS	CG CLASS	QD CLASS	COMP GROUP	
1375-00-028-5227	M131	A	VIII	1.1	B	879

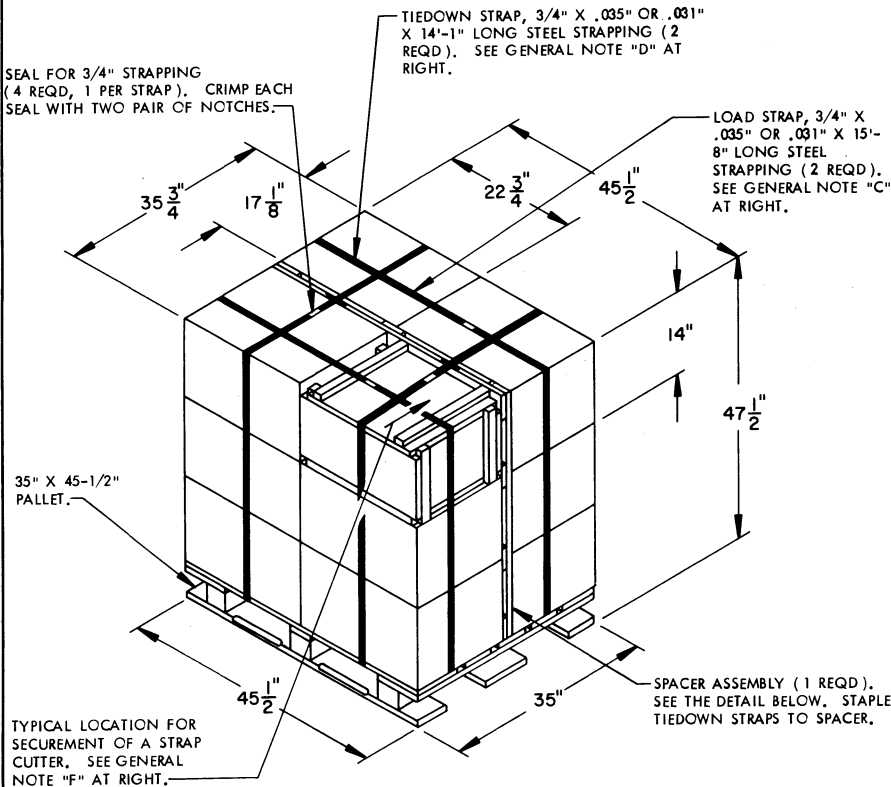
**NOTICE:** THIS APPENDIX CANNOT STAND ALONE BUT MUST BE USED IN CONJUNCTION WITH THE BASIC UNITIZATION PROCEDURES DRAWING 19-48-4116-20PA1002.

REVISIONS				DRAFTSMAN	PROJ ENG
				pt	WRF/WRF
				LOG ENGRG OFFICE	W & Omet
				APPROVED BY ORDER OF COMMANDING GENERAL, U. S. ARMY MATERIEL DEVELOPMENT AND READINESS COMMAND (DARCOM)	
				DARSAR - LEP	DARSAR - TMD
				U. S. ARMY DEFENSE AMMUNITION CENTER AND SCHOOL	
				U. S. ARMY DARCOM DRAWING	
				MARCH 1983	
				CLASS	DIVISION
				DRAWING	FILE
				19	48
				4116/ 12IN	20PA 1002

**DO NOT SCALE**

**GENERAL NOTES**

- A. THIS APPENDIX CANNOT STAND ALONE BUT MUST BE USED IN CONJUNCTION WITH THE BASIC UNITIZATION PROCEDURES DRAWING 19-48-4116-20PA1002. TO PRODUCE AN APPROVED UNIT LOAD, ALL PERTINENT PROCEDURES, SPECIFICATIONS AND CRITERIA SET FORTH WITHIN THE BASIC DRAWING WILL APPLY TO THE PROCEDURES DELINEATED IN THIS APPENDIX. ANY EXCEPTIONS TO THE BASIC PROCEDURES ARE SPECIFIED IN THIS APPENDIX.
- B. DIMENSIONS, CUBE AND WEIGHT OF A PALLET UNIT WILL VARY SLIGHTLY DEPENDING UPON THE ACTUAL DIMENSIONS OF THE BOXES AND THE WEIGHT OF THE SPECIFIC ITEM BEING UNITIZED.
- C. THE LOAD STRAPS MAY BE THREADED THROUGH THE STRAP SLOTS OF A PALLET OR PRE-POSITIONED ON THE PALLET DECK PRIOR TO PLACING BOXES ON THE PALLET.
- D. INSTALL EACH TIEDOWN STRAP TO PASS UNDER THE TOP DECK BOARDS OF THE PALLET AND TO BE LOCATED AS SHOWN. TIEDOWN STRAPS WILL BE TENSIONED AND SEALED PRIOR TO THE LOAD STRAPS.
- E. THE FOLLOWING DARCOM DRAWINGS ARE APPLICABLE FOR OUTLOADING AND STORAGE OF THE ITEMS COVERED BY THIS APPENDIX.  
  
 CARLOADING-----DRAWING 19-48-4115-5PA1002  
 TRUCKLOADING ----DRAWING 19-48-4117-11PA1003  
 STORAGE-----DRAWING 19-48-4118-1-2-3-4-14-22PA-1002
- F. FOR METHOD OF SECURING A STRAP CUTTER TO THE PALLET UNIT, SEE DARCOM DRAWING 19-48-4127-20P1000.
- G. IF ITEMS COVERED HEREIN ARE UNITIZED PRIOR TO ISSUANCE OF THIS APPENDIX, THE BOXES NEED NOT BE REUNITIZED SOLELY TO CONFORM TO THIS APPENDIX.
- H. THE UNITIZATION PROCEDURES DEPICTED HEREIN MAY ALSO BE USED FOR UNITIZING BLASTING CAPS WHEN IDENTIFIED BY DIFFERENT NATIONAL STOCK NUMBERS (NSN) THAN WHAT IS SHOWN ON THE TITLE PAGE, PROVIDED THE BOX PACK DOES NOT VARY FROM WHAT IS DELINEATED HEREIN. THE EXPLOSIVE CLASSIFICATION OF OTHER ITEMS MAY BE DIFFERENT THAN WHAT IS SHOWN.

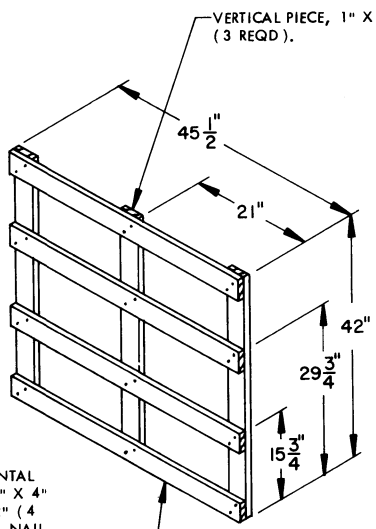


**PALLET UNIT**

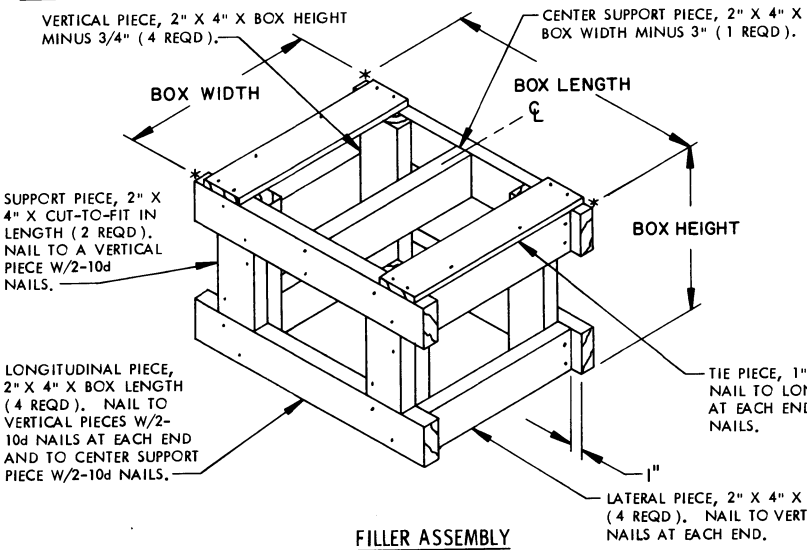
SEE GENERAL NOTE "B" AT RIGHT.

12 BOXES OF BLASTING CAPS ( 10,000 PER BOX ) @ 66 LBS-----	792 LBS (APPROX )
DUNNAGE -----	22 LBS
PALLET-----	65 LBS
<b>TOTAL WEIGHT-----</b>	<b>879 LBS (APPROX )</b>
<b>CUBE-----</b>	<b>44.7 CU FT (APPROX )</b>

BILL OF MATERIAL		
LUMBER	LINEAR FEET	BOARD FEET
1" X 4"	25.67	8.56
NAILS	NO. REQD	POUNDS
6d (2")	24	0.14
PALLET, 35" X 45-1/2"-----	1 REQD-----	65 LBS
STEEL STRAPPING, 3/4"-----	59.50' REQD-----	4.25 LBS
SEAL FOR 3/4" STRAPPING-----	4 REQD-----	NIL
STAPLE, 15/16" X 3/4"-----	2 REQD-----	NIL



**SPACER ASSEMBLY**  
(ONE REQD)



**FILLER ASSEMBLY**  
(FOR MINUS ONE BOX)