

APPENDIX 116

UNITIZATION PROCEDURES FOR BOXED AMMUNITION AND COMPONENTS ON 4 - WAY ENTRY PALLETS

SIMULATOR , PROJECTILE AIRBURST LIQUID , M11,
PACKED 15 PER WOODEN BOX , UNITIZED 24
BOXES PER 42" X 53" PALLET (UNIT LOAD A);
APPROX BOX SIZE 30" L X 13 $\frac{1}{4}$ " W X 11 $\frac{5}{8}$ " H

SIMULANT FOR PROJECTILE AIRBURST LIQUID ,
M11, PACKED IN 5 - GAL PAIL , UNITIZED 24
PAILS PER 35" X 45 $\frac{1}{2}$ " PALLET (UNIT LOAD B);
APPROX PAIL SIZE 11 $\frac{1}{2}$ " DIA X 13 $\frac{5}{8}$ " H

PALLET UNIT DATA							
ITEMS INCLUDED			HAZARD CLASSIFICATION [Ⓢ]				WEIGHT (LBS)
UNIT	NSN	DODIC	DOT CLASS	CG CLASS	QD CLASS	COMP GROUP	
A	P/O 1370-01-112-2800	L630	A	X-A	(02) 1.2	F	808
B	P/O 1370-01-112-2800	L630	A	X-A	(02) 1.2	F	1,205

REVISION

REVISION NO. 1, JANUARY 1985, CONSISTS OF:

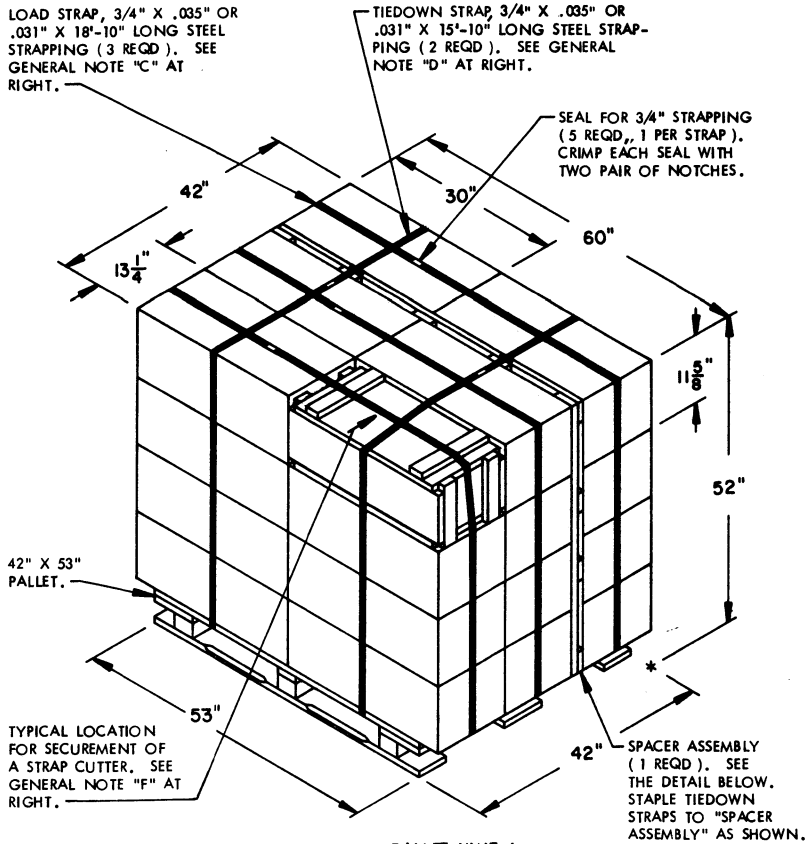
CHANGING ITEM NOMENCLATURE

NOTICE: THIS APPENDIX CANNOT STAND ALONE BUT MUST BE USED
IN CONJUNCTION WITH THE BASIC UNITIZATION PROCEDURES
DRAWING 19-48-4116-20PA1002.

Ⓢ HAZARD CLASSIFICATION DATA CONTAINED IN THE ABOVE CHART IS FOR GUIDANCE AND INFORMATIONAL PURPOSES ONLY. VERIFICATION OF THE SPECIFIED DATA SHOULD BE MADE BY CONSULTING THE MOST RECENT JOINT HAZARD CLASSIFICATION SYSTEM LISTING OR OTHER APPROVED LISTING (S).

DO NOT SCALE

REVISIONS				DRAFTSMAN 1b	PROJ ENG NEW
1	JAN 85	WRF JAB	B. J. Martin AMSC-TD	EAG LOGGING OFFICE	K. W. M.
				APPROVED, U.S. ARMY ARMAMENT, MUNITIONS AND CHEMICAL COMMAND	
				B. J. Martin	B. J. Gordon
				AMSC-TD	
				APPROVED BY ORDER OF COMMANDING GENERAL, U.S. ARMY MATERIEL COMMAND (AMC)	
				John A. Byrd U.S. ARMY DEFENSE AMMUNITION CENTER AND SCHOOL	
U.S. ARMY AMC DRAWING					
DECEMBER 1984					
CLASS	DIVISION	DRAWING	FILE		
19	48	4116/ 116	20PA 1002		



PALLET UNIT A

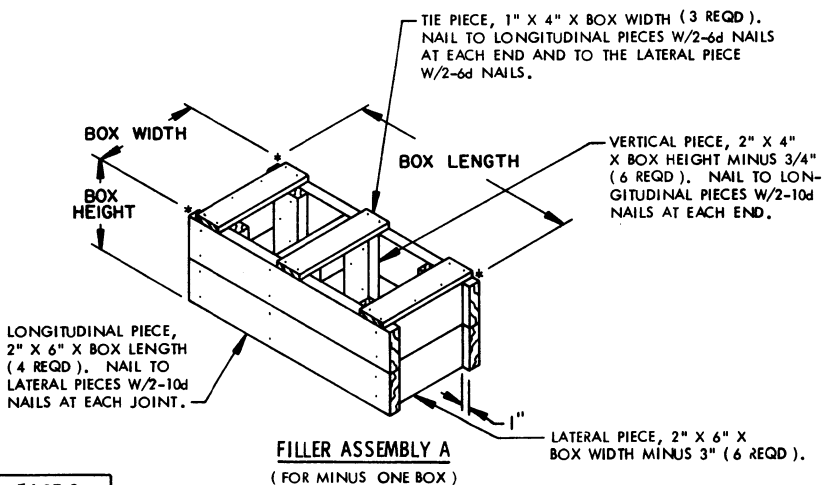
SEE GENERAL NOTE "B" AT RIGHT

24 BOXES SIMULATOR, PROJECTILE, AIRBURST LIQUID (15 PER BOX) @ 28 LBS -----	672 LBS (APPROX)
DUNNAGE -----	46 LBS
PALLET -----	90 LBS
TOTAL WEIGHT -----	808 LBS (APPROX)
CUBE -----	75.83 CU FT (APPROX)

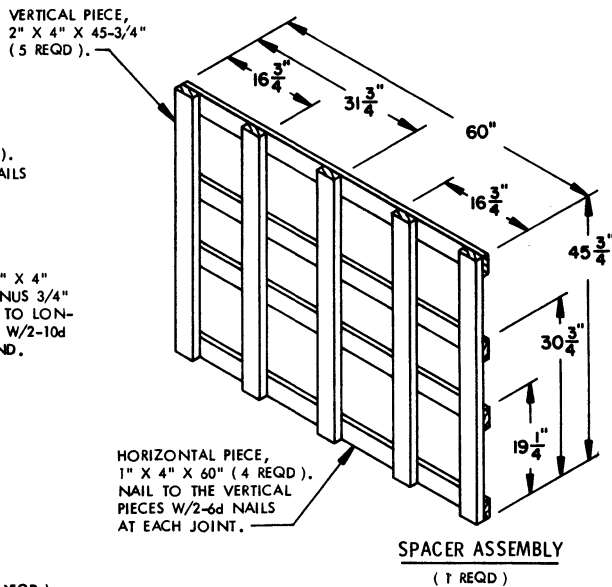
GENERAL NOTES (UNIT A)

- A. THIS APPENDIX CANNOT STAND ALONE BUT MUST BE USED IN CONJUNCTION WITH THE BASIC UNITIZATION PROCEDURES DRAWING 19-48-4116-20PA1002. TO PRODUCE AN APPROVED UNIT LOAD, ALL PERTINENT PROCEDURES, SPECIFICATIONS AND CRITERIA SET FORTH WITHIN THE BASIC DRAWING WILL APPLY TO THE PROCEDURES DELINEATED IN THIS APPENDIX. ANY EXCEPTIONS TO THE BASIC PROCEDURES ARE SPECIFIED IN THIS APPENDIX.
- B. DIMENSIONS, CUBE AND WEIGHT OF A PALLET UNIT WILL VARY SLIGHTLY DEPENDING UPON THE ACTUAL DIMENSIONS OF THE BOXES AND THE WEIGHT OF THE SPECIFIC ITEM BEING UNITIZED.
- C. THE LOAD STRAPS MAY BE PRE-POSITIONED ON THE PALLET DECK OR THREADED THROUGH THE STRAPS SLOTS OF THE PALLET. LOAD STRAPS WILL NOT BE TENSIONED AND SEALED UNTIL THE TIEDOWN STRAPS HAVE BEEN TENSIONED AND SEALED.
- D. INSTALL EACH TIEDOWN STRAP TO PASS UNDER THE TOP DECK BOARDS OF THE PALLET AND TO BE LOCATED AS SHOWN. TIEDOWN STRAPS WILL BE TENSIONED AND SEALED PRIOR TO APPLICATION OF LOAD STRAPS.
- E. THE FOLLOWING AMC (DARCUM) DRAWINGS ARE APPLICABLE FOR OUTLOADING AND STORAGE OF THE ITEMS COVERED BY THIS APPENDIX.
 - CARLOADING ----- DRAWING 19-48-4115-5PA1002
 - TRUCKLOADING ----- DRAWING 19-48-4117-11PA1003
 - STORAGE ----- DRAWING 19-48-4118-1-2-3-4-14-22PA1002
- F. FOR METHOD OF SECURING A STRAP CUTTER TO THE PALLET UNIT, SEE DARCUM DRAWING 19-48-4127-20P1000.
- G. IF ITEMS COVERED HEREIN ARE UNITIZED PRIOR TO ISSUANCE OF THIS APPENDIX, THE BOXES NEED NOT BE REUNITIZED SOLELY TO CONFORM TO THIS APPENDIX.
- H. THE UNITIZATION PROCEDURES DEPICTED HEREIN MAY ALSO BE USED FOR UNITIZING SIMULATORS, LAUNCHER, PROJECTED LIQUID AIRBURST WHEN IDENTIFIED BY DIFFERENT NATIONAL STOCK NUMBERS (NSN) THAN WHAT IS SHOWN ON THE TITLE PAGE, PROVIDED THE BOX PACK DOES NOT VARY FROM WHAT IS DELINEATED HEREIN. THE EXPLOSIVE CLASSIFICATION OF OTHER ITEMS MAY BE DIFFERENT THAN WHAT IS SHOWN.

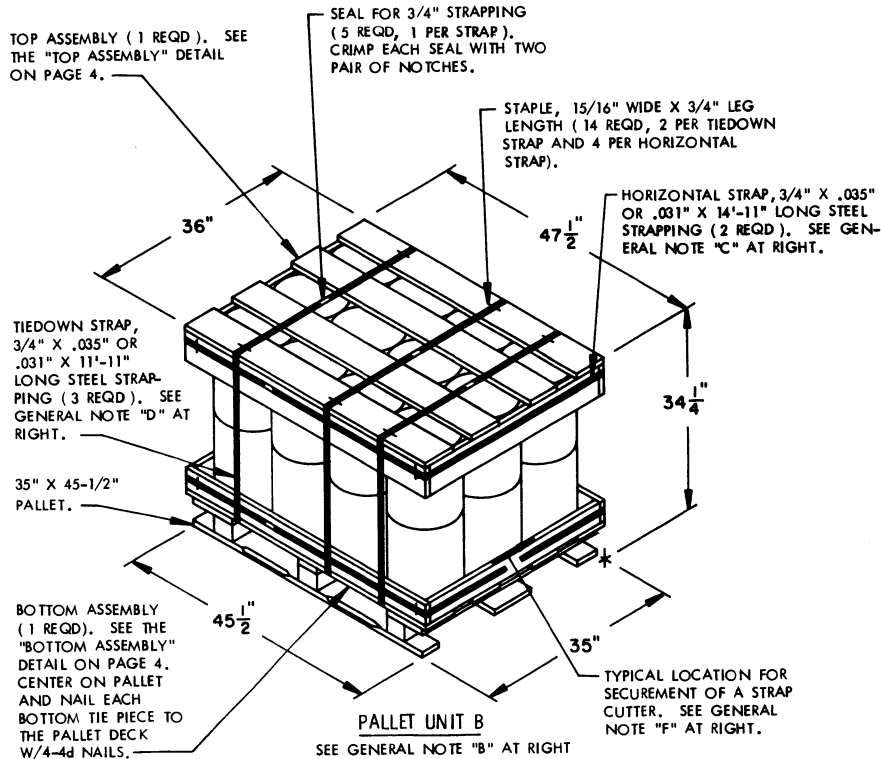
BILL OF MATERIAL		
LUMBER	LINEAR FEET	BOARD FEET
1" X 4"	20	6.67
2" X 4"	19.06	12.71
NAILS	NO. REQD	POUNDS
6d (2")	40	.24
PALLET, 42" X 53" -----	1 REQD -----	90 LBS
STEEL STRAPPING, 3/4" ---	88.17' REQD -----	6.30 LBS
SEAL FOR 3/4" STRAPPING ---	5 REQD -----	NIL
STAPLE, 15/16" X 3/4" -----	2 REQD -----	NIL



FILLER ASSEMBLY A
(FOR MINUS ONE BOX)



SPACER ASSEMBLY
(7 REQD)



24 PAILS OF SIMULANT (5 GAL PAIL) @ 45 LBS	-----	1,080 LBS (APPROX)
DUNNAGE	-----	60 LBS
PALLET	-----	65 LBS
TOTAL WEIGHT	-----	1,205 LBS (APPROX)
CUBE	-----	33.9 CU FT (APPROX)

GENERAL NOTES (UNIT B)

- A. THIS APPENDIX CANNOT STAND ALONE BUT MUST BE USED IN CONJUNCTION WITH THE BASIC UNITIZATION PROCEDURES DRAWING 19-48-4116-20PA1002. TO PRODUCE AN APPROVED UNIT LOAD, ALL PERTINENT PROCEDURES, SPECIFICATIONS AND CRITERIA SET FORTH WITHIN THE BASIC DRAWING WILL APPLY TO THE PROCEDURES DELINEATED IN THIS APPENDIX. ANY EXCEPTIONS TO THE BASIC PROCEDURES ARE SPECIFIED IN THIS APPENDIX.
- B. DIMENSIONS, CUBE AND WEIGHT OF A PALLET UNIT WILL VARY SLIGHTLY DEPENDING UPON THE ACTUAL DIMENSIONS OF THE PAILS AND THE WEIGHT OF THE SPECIFIC ITEM BEING UNITIZED.
- C. INSTALL EACH HORIZONTAL STRAP TO ENCIRCLE A DUNNAGE ASSEMBLY. HORIZONTAL STRAPS MUST BE TENSIONED AND SEALED PRIOR TO APPLICATION OF TIEDOWN STRAPS.
- D. INSTALL EACH TIEDOWN STRAP TO PASS UNDER THE TOP DECK BOARDS OF THE PALLET AND TO BE LOCATED AS SHOWN. TIEDOWN STRAPS WILL NOT BE APPLIED UNTIL THE HORIZONTAL STRAPS HAVE BEEN TENSIONED AND SEALED.
- E. THE FOLLOWING AMC (DARCOM) DRAWINGS ARE APPLICABLE FOR OUTLOADING AND STORAGE OF THE ITEMS COVERED BY THIS APPENDIX.
CARLOADING-----DRAWING 19-48-4115-5PA1002
TRUCKLOADING--- DRAWING 19-48-4117-11PA1003
STORAGE----- DRAWING 19-48-4118-1-2-3-4-14-22PA1002
- F. FOR METHOD OF SECURING A STRAP CUTTER TO THE PALLET UNIT, SEE DARCOM DRAWING 19-48-4127-20P1000.
- G. IF ITEMS COVERED HEREIN ARE UNITIZED PRIOR TO ISSUANCE OF THIS APPENDIX, THE BOXES NEED NOT BE REUNITIZED SOLELY TO CONFORM TO THIS APPENDIX.
- H. THE UNITIZATION PROCEDURES DEPICTED HEREIN MAY ALSO BE USED FOR UNITIZING 5-GAL PAILS WHEN IDENTIFIED BY DIFFERENT NATIONAL STOCK NUMBERS (NSN) THAN WHAT IS SHOWN ON THE TITLE PAGE, PROVIDED THE PAIL DOES NOT VARY FROM WHAT IS DELINEATED HEREIN. THE EXPLOSIVE CLASSIFICATION OF OTHER ITEMS MAY BE DIFFERENT THAN WHAT IS SHOWN.

SPECIAL NOTE:

IF LESS THAN FULL PALLET LOADS ARE TO BE ISSUED, THE QUANTITY OF CONTAINERS ON PALLET UNITS A AND B MUST BE THE SAME.

BILL OF MATERIAL (UNIT B)		
LUMBER	LINEAR FEET	BOARD FEET
1" X 4"	13.67	4.55
1" X 6"	45.33	22.67
NAILS	NO. REQD	POUNDS
4d (1-1/2")	16	0.05
6d (2")	92	0.54
PALLET, 35" X 45-1/2" -----	1 REQD -----	65 LBS
STEEL STRAPPING, 3/4" -----	65.58 REQD -----	4.69 LBS
SEAL FOR 3/4" STRAPPING -----	5 REQD -----	NIL
STAPLE, 15/16" X 3/4" -----	14 REQD -----	NIL

