

APPENDIX 115E

UNITIZATION PROCEDURES FOR BOXED AMMUNITION AND COMPONENTS ON 4-WAY ENTRY PALLETS

CARTRIDGE, IMPULSE, XM796, PACKED 2,160 PER
WOODEN BOX, UNITIZED 12 BOXES PER 40" X 48"
PALLET; APPROX BOX SIZE 23" L X 20" W X 11½" H

PALLET UNIT DATA						
ITEMS INCLUDED		HAZARD CLASSIFICATION ①				WEIGHT (LBS)
NSN	DODIC	DOT CLASS	CG CLASS	QD CLASS	COMP GROUP	
1377- 01-049-6365	MD73	C	I	1.4	S	828

REVISION

REVISION NO. 1, DATED MAY 1984, CONSISTS OF:

ASSIGNING NATIONAL STOCK NUMBER TO ITEM LISTED IN "PALLET
UNIT DATA" CHART.

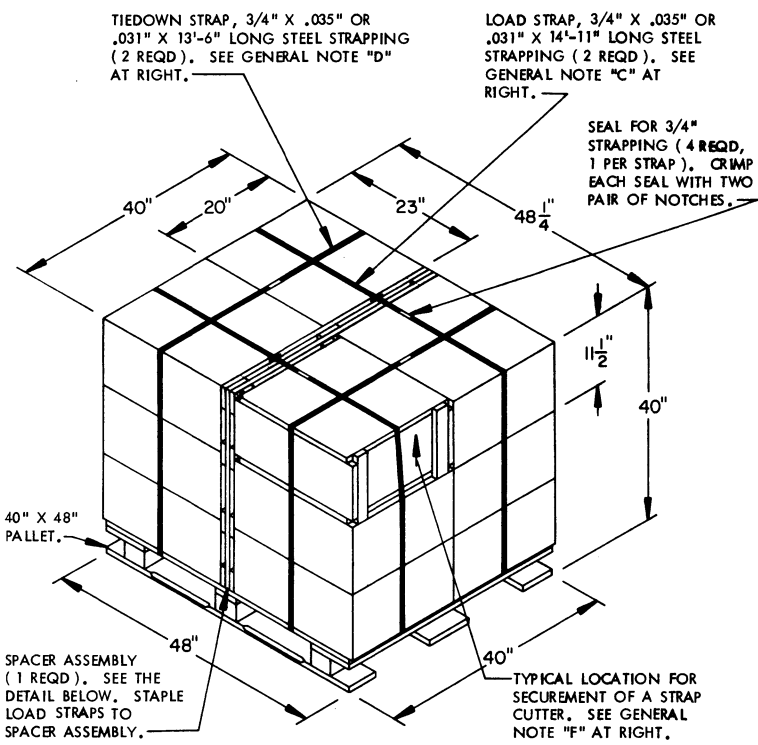
① HAZARD CLASSIFICATION DATA CONTAINED IN THE ABOVE CHART IS FOR GUIDANCE AND INFORMATIONAL PURPOSES ONLY. VERIFICATION OF THE SPECIFIED DATA SHOULD BE MADE BY CONSULTING THE MOST RECENT JOINT HAZARD CLASSIFICATION SYSTEM LISTING OR OTHER APPROVED LISTINGS(S).

NOTICE: THIS APPENDIX CANNOT STAND ALONE BUT MUST BE USED IN CONJUNCTION WITH THE BASIC UNITIZATION PROCEDURES DRAWING 19-48-4116-20PA1002.

● FOR AN OPTIONAL PALLET SIZE AND UNITIZATION PROCEDURE, SEE GENERAL NOTE "J" ON PAGE 2.

REVISIONS				DRAFTSMAN GRS/mak	PROJ. ENG. WRF/RLW
1	MAY 84	<i>WRF</i>	<i>WRF</i>	<i>WRF</i>	<i>WRF</i>
				CHECKED RSM	LON. ENGINE OFFICE <i>John Boyd</i>
				APPROVED, U. S. ARMY ARMAMENT MATERIAL READINESS COMMAND	
				<i>John L. Boyd</i>	
				APPROVED BY ORDER OF COMMANDING GENERAL, U. S. ARMY MATERIEL DEVELOPMENT AND READINESS COMMAND (DARCOM)	
				<i>John L. Boyd Jr.</i> U. S. ARMY DEVERSE AMMUNITION CENTER AND SCHOOL	
U. S. ARMY DARCOM DRAWING					
OCTOBER 1979					
CLASS	DIVISION	DRAWING	FILE		
19	48	4116/ 115E	20PA 1002		

DO NOT SCALE



PALLET UNIT

SEE GENERAL NOTE "B" AT RIGHT.

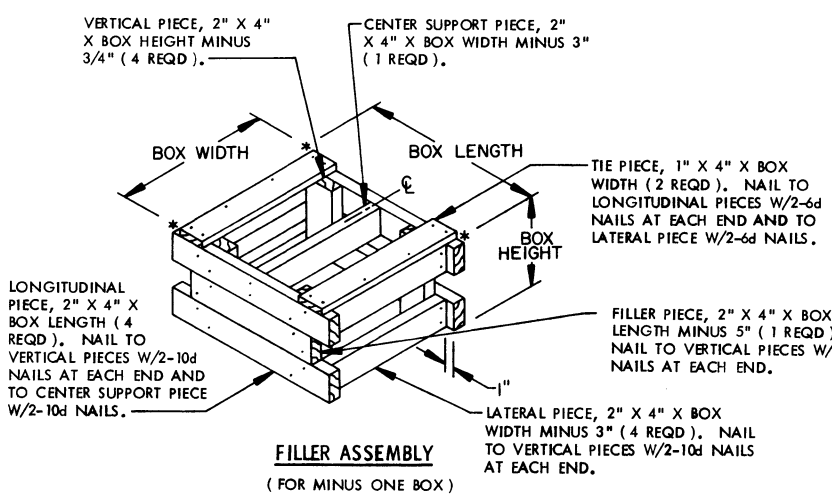
12 BOXES OF CARTRIDGE (2,160 PER BOX) @ 60 LBS -----	720 LBS (APPROX)
DUNNAGE -----	28 LBS
PALLET -----	80 LBS
TOTAL WEIGHT -----	828 LBS (APPROX)
CUBE -----	44.7 CU FT (APPROX)

GENERAL NOTES

- A. THIS APPENDIX CANNOT STAND ALONE BUT MUST BE USED IN CONJUNCTION WITH THE BASIC UNITIZATION PROCEDURES DRAWING 19-48-4116-20PA1002. TO PRODUCE AN APPROVED UNIT LOAD, ALL PERTINENT PROCEDURES, SPECIFICATIONS AND CRITERIA SET FORTH WITHIN THE BASIC DRAWING WILL APPLY TO THE PROCEDURES DELINEATED IN THIS APPENDIX. ANY EXCEPTIONS TO THE BASIC PROCEDURES ARE SPECIFIED IN THIS APPENDIX.
- B. DIMENSIONS, CUBE AND WEIGHT OF A PALLET UNIT WILL VARY SLIGHTLY DEPENDING UPON THE ACTUAL DIMENSIONS OF THE BOXES AND THE WEIGHT OF THE SPECIFIC ITEM BEING UNITIZED.
- C. THE LOAD STRAPS MAY BE THREADED THROUGH THE STRAP SLOTS OF A PALLET OR PRE-POSITIONED ON THE PALLET DECK PRIOR TO PLACING BOXES ON THE PALLET. LOAD STRAPS MUST BE TENSIONED AND SEALED PRIOR TO APPLICATION OF TIEDOWN STRAPS.
- D. INSTALL EACH TIEDOWN STRAP TO PASS UNDER THE TOP DECK BOARDS OF THE PALLET AND TO BE LOCATED AS SHOWN. TIEDOWN STRAPS WILL NOT BE APPLIED UNTIL THE LOAD STRAPS HAVE BEEN TENSIONED AND SEALED.
- E. THE FOLLOWING DARCOM DRAWINGS ARE APPLICABLE FOR OUTLOADING AND STORAGE OF THE ITEMS COVERED BY THIS APPENDIX.

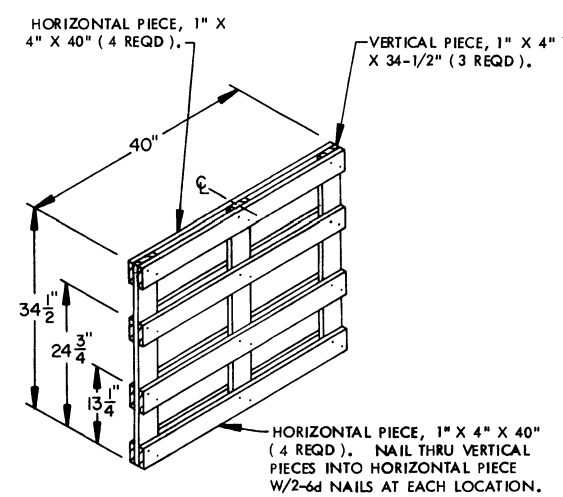
CARLOADING -----	DRAWING 19-48-4115-SPA1002
TRUCKLOADING -----	DRAWING 19-48-4117-11PA1003
STORAGE -----	DRAWING 19-48-4118-1-2-14-22PA1002
- F. FOR METHOD OF SECURING A STRAP CUTTER TO THE PALLET UNIT, SEE DARCOM DRAWING 19-48-4127-20P1000.
- G. IF ITEMS COVERED HEREIN ARE UNITIZED PRIOR TO ISSUANCE OF THIS APPENDIX, THE BOXES NEED NOT BE REUNITIZED SOLELY TO CONFORM TO THIS APPENDIX.
- H. THE UNITIZATION PROCEDURES DEPICTED HEREIN MAY ALSO BE USED FOR UNITIZING CARTRIDGES WHEN IDENTIFIED BY DIFFERENT NATIONAL STOCK NUMBERS (NSN) THAN WHAT IS SHOWN ON THE TITLE PAGE, PROVIDED THE BOX PACK DOES NOT VARY FROM WHAT IS DELINEATED HEREIN. THE EXPLOSIVE CLASSIFICATION OF OTHER ITEMS MAY BE DIFFERENT THAN WHAT IS SHOWN.
- J. AS AN OPTIONAL UNITIZATION PROCEDURE, THE UNIT LOAD DEPICTED AT THE LEFT MAY BE UNITIZED ON A 35" X 45-1/2" PALLET WITHOUT THE "SPACER ASSEMBLY". THE OPTIONAL PROCEDURE IS AN EXCEPTION TO THE MAXIMUM LENGTH CRITERION STATED IN THE BASIC PROCEDURE DRAWING, HOWEVER, THIS EXCEPTION MAY PROVIDE FOR A MORE ECONOMICAL AND COST EFFECTIVE UNIT LOAD.

BILL OF MATERIAL		
LUMBER	LINEAR FEET	BOARD FEET
1" X 4"	35.29	11.76
NAILS		POUNDS
6d (2")	24	0.14
PALLET, 40" X 48" -----	1 REQD -----	80 LBS
STEEL STRAPPING, 3/4" -----	56.83' REQD -----	4.06 LBS
SEAL FOR 3/4" STRAPPING -----	4 REQD -----	NIL
STAPLE -----	2 REQD -----	NIL



FILLER ASSEMBLY

(FOR MINUS ONE BOX)



SPACER ASSEMBLY

(ONE REQD)