

APPENDIX 110F

UNITIZATION PROCEDURES FOR BOXED AMMUNITION AND COM- PONENTS ON 4-WAY ENTRY PALLET

**FLARE, COUNTERMEASURE, PACKED 60
PER WOODEN BOX, UNITIZED 18 BOXES
PER 35" X 45-1/2" PALLET; APPROX BOX
SIZE 18-7/8" L X 16-7/8" W X 11-3/4" H**

**NOTICE: THIS APPENDIX CANNOT STAND ALONE BUT MUST BE USED IN CONJUNCTION WITH
THE BASIC UNITIZATION PROCEDURES DRAWING 19-48-4116-20PA1002.**

DISTRIBUTION STATEMENT A:

**APPROVED FOR PUBLIC RELEASE;
DISTRIBUTION IS UNLIMITED.**

U.S. ARMY MATERIEL COMMAND DRAWING

<p style="font-size: small;">APPROVED, U.S. ARMY FIELD SUPPORT COMMAND <i>Travis R.</i></p> <p style="font-size: x-large; font-family: cursive;"><i>David A. Poston</i></p> <p style="font-size: x-small; text-align: center;">AMSRD-AAR-AIL-TP</p> <hr/> <p style="font-size: x-large; font-family: cursive;"><i>David</i></p> <p style="font-size: x-small; text-align: center;">AMSF5-ST</p> <hr/> <p style="font-size: x-small;">APPROVED BY ORDER OF COMMANDING GENERAL, U.S. ARMY MATERIEL COMMAND</p> <p style="font-size: x-large; font-family: cursive;"><i>J. P. [Signature]</i></p> <p style="font-size: x-small; text-align: center;">U.S. ARMY DEFENSE AMMUNITION CENTER</p>	<p>CAUTION: VERIFY PRIOR TO USE AT WWW.DAC.ARMY.MIL THAT THIS IS THE MOST CURRENT VERSION OF THIS DOCUMENT. THIS IS PAGE 1 OF 4.</p>										
<p>DO NOT SCALE</p>		<p>NOVEMBER 1983</p>									
<table border="1" style="width: 100%; border-collapse: collapse;"> <tr> <td style="width: 15%;">ENGINEER OR TECHNICIAN</td> <td style="width: 10%;">BASIC REV.</td> <td style="width: 75%;"> <p>ROBERT A. REGAZZI</p> <p>LAURA A. FIEFFER</p> </td> </tr> </table>	ENGINEER OR TECHNICIAN	BASIC REV.	<p>ROBERT A. REGAZZI</p> <p>LAURA A. FIEFFER</p>	<p>REVISION NO. 5</p>	<p>AUGUST 2005</p>						
ENGINEER OR TECHNICIAN	BASIC REV.	<p>ROBERT A. REGAZZI</p> <p>LAURA A. FIEFFER</p>									
<table border="1" style="width: 100%; border-collapse: collapse;"> <tr> <td style="width: 50%;">TRANSPORTATION ENGINEERING DIVISION</td> <td style="width: 50%; text-align: center;"> <p style="font-size: x-large; font-family: cursive;"><i>G. L. Willis</i></p> </td> </tr> <tr> <td style="font-size: x-small;">VALIDATION ENGINEERING DIVISION</td> <td style="text-align: center;"> <p style="font-size: x-large; font-family: cursive;"><i>[Signature]</i></p> </td> </tr> </table>		TRANSPORTATION ENGINEERING DIVISION	<p style="font-size: x-large; font-family: cursive;"><i>G. L. Willis</i></p>	VALIDATION ENGINEERING DIVISION	<p style="font-size: x-large; font-family: cursive;"><i>[Signature]</i></p>	<p>SEE THE REVISION LISTING ON PAGE 2</p>					
TRANSPORTATION ENGINEERING DIVISION	<p style="font-size: x-large; font-family: cursive;"><i>G. L. Willis</i></p>										
VALIDATION ENGINEERING DIVISION	<p style="font-size: x-large; font-family: cursive;"><i>[Signature]</i></p>										
<table border="1" style="width: 100%; border-collapse: collapse;"> <tr> <td style="width: 50%;">ENGINEERING DIRECTORATE</td> <td style="width: 50%; text-align: center;"> <p style="font-size: x-large; font-family: cursive;"><i>[Signature]</i></p> </td> </tr> </table>	ENGINEERING DIRECTORATE	<p style="font-size: x-large; font-family: cursive;"><i>[Signature]</i></p>	<table border="1" style="width: 100%; border-collapse: collapse;"> <tr> <td style="width: 25%;">CLASS</td> <td style="width: 25%;">DIVISION</td> <td style="width: 25%;">DRAWING</td> <td style="width: 25%;">FILE</td> </tr> <tr> <td style="text-align: center;">19</td> <td style="text-align: center;">48</td> <td style="text-align: center;">4116/ 110F</td> <td style="text-align: center;">20PA1002</td> </tr> </table>	CLASS	DIVISION	DRAWING	FILE	19	48	4116/ 110F	20PA1002
ENGINEERING DIRECTORATE	<p style="font-size: x-large; font-family: cursive;"><i>[Signature]</i></p>										
CLASS	DIVISION	DRAWING	FILE								
19	48	4116/ 110F	20PA1002								

PALLET UNIT DATA				
ITEMS INCLUDED		● HAZARD CLASS AND DIVISION	● COMPAT-IBILITY GROUP	APPROX WEIGHT LBS
NSN	DODIC			
1370-01-038-5111	L429	1. 3	G	1, 188
01-187-8390	L433	1. 3	G	1, 188
01-296-8395	L463	1. 3	G	1, 782

● HAZARD CLASSIFICATION DATA CONTAINED IN THE ABOVE CHART IS FOR GUIDANCE AND INFORMATIONAL PURPOSES ONLY. VERIFICATION OF THE SPECIFIED DATA SHOULD BE MADE BY CONSULTING THE MOST RECENT JOINT HAZARD CLASSIFICATION SYSTEM LISTING OR OTHER APPROVED LISTING(S).

REVISIONS

REVISION NO. 1, DATED MAY 1985, CONSISTS OF:

1. CHANGING BOX DIMENSIONS.
2. CHANGING UNITIZATION PROCEDURES TO CONFORM TO 1 ABOVE.

REVISION NO. 2, DATED MARCH 1987, CONSISTS OF:

1. CHANGING BOX DIMENSIONS.
2. CHANGING UNITIZATION PROCEDURES TO CONFORM TO 1 ABOVE.
3. ADDING ITEM BY NATIONAL STOCK NUMBER (NSN) TO THE "PALLET UNIT DATA" CHART.

REVISION NO. 3, DATED OCTOBER 1987, CONSISTS OF:

ADDING GENERAL NOTE "J" (CHAMFER NOTE).

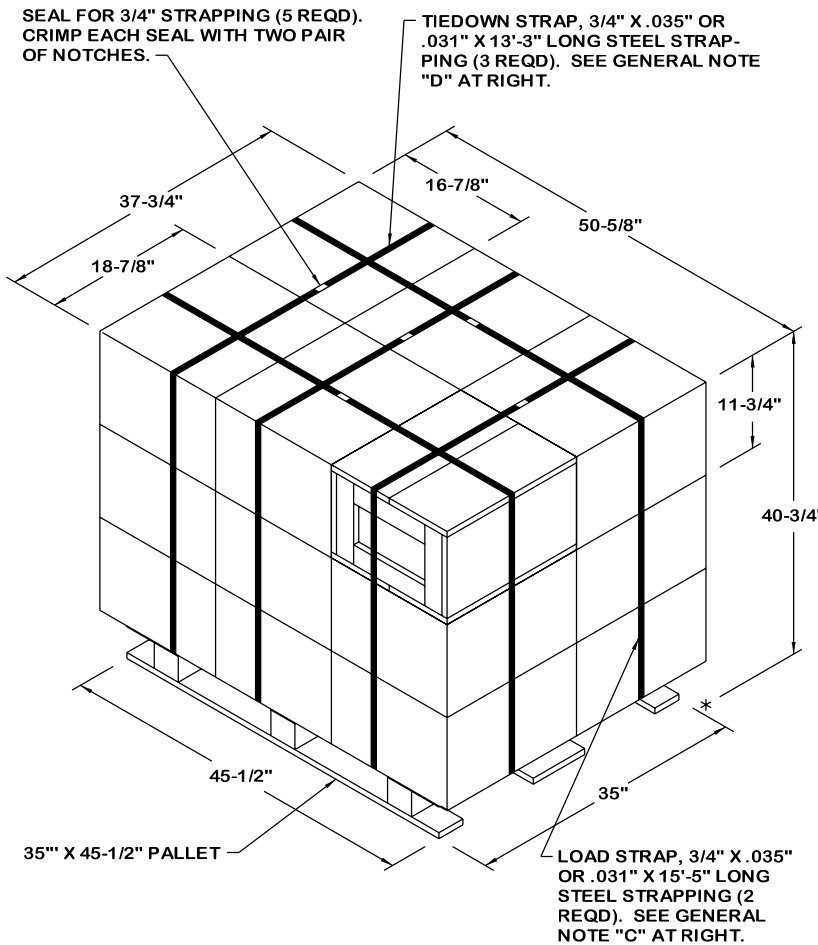
REVISION NO. 4, DATED JUNE 1995, CONSISTS OF:

ADDING ITEM BY NATIONAL STOCK NUMBER (NSN) TO THE "PALLET UNIT DATA" CHART.

REVISION NO. 5, DATED AUGUST 2005, CONSISTS OF CHANGES PER PQDR W67G23050035 INCLUDING:

1. REORIENTING THE BOXES ON THE PALLET.
2. CHANGING UNITIZATION PROCEDURES TO CONFORM TO 1 ABOVE.

GENERAL NOTES



PALLET UNIT

SEE GENERAL NOTE "B" AT RIGHT.

18 BOXES OF FLARES (60 PER BOX) @ 95 LBS	-----	1,710 LBS (APPROX)
DUNNAGE	-----	7 LBS
PALLET	-----	65 LBS
<hr/>		
TOTAL WEIGHT	-----	1,782 LBS (APPROX)
CUBE	-----	45.1 CU FT (APPROX)

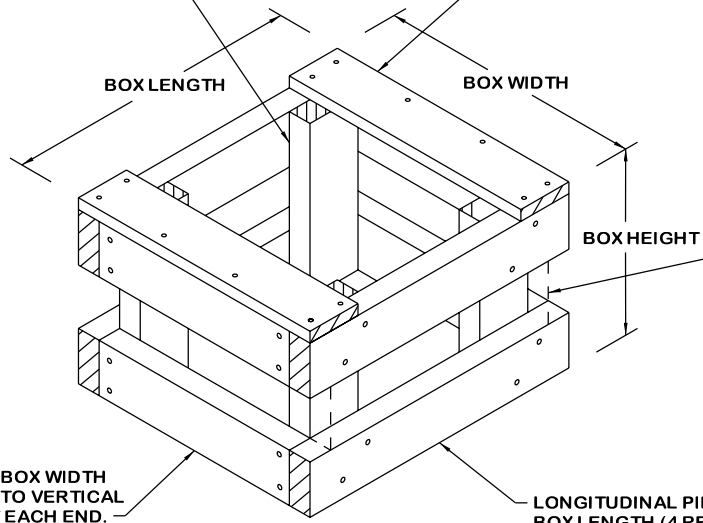
BILL OF MATERIAL

PALLET, 35" X 45-1/2"	- - - - 1 REQD	- - - - 65 LBS
STEEL STRAPPING, 3/4"	- 70.58' REQD	- - - - 6.30 LBS
SEAL FOR 3/4" STRAPPING	- - - 5 REQD	- - - - NIL

- A. THIS APPENDIX CANNOT STAND ALONE BUT MUST BE USED IN CONJUNCTION WITH THE BASIC UNITIZATION PROCEDURES DRAWING 19-48-4116-20PA1002. TO PRODUCE AN APPROVED UNIT LOAD, ALL PERTINENT PROCEDURES, SPECIFICATIONS AND CRITERIA SET FORTH WITHIN THE BASIC DRAWING WILL APPLY TO THE PROCEDURES DELINEATED IN THIS APPENDIX. ANY EXCEPTIONS TO THE BASIC PROCEDURES ARE SPECIFIED IN THIS APPENDIX.
- B. DIMENSIONS, CUBE AND WEIGHT OF A PALLET UNIT WILL VARY SLIGHTLY DEPENDING UPON THE ACTUAL DIMENSIONS OF THE BOXES AND THE WEIGHT OF THE SPECIFIC ITEM BEING UNITIZED.
- C. THE LOAD STRAPS MAY BE THREADED THROUGH THE STRAP SLOTS OF A PALLET OR PRE-POSITIONED ON THE PALLET DECK PRIOR TO PLACING THE BOXES ON THE PALLET. LOAD STRAPS MUST BE TENSIONED AND SEALED PRIOR TO APPLICATION OF TIEDOWN STRAPS.
- D. INSTALL EACH TIEDOWN STRAP TO PASS UNDER THE TOP DECK BOARDS OF THE PALLET AND TO BE LOCATED AS SHOWN. TIEDOWN STRAPS WILL NOT BE APPLIED UNTIL THE LOAD STRAPS HAVE BEEN TENSIONED AND SEALED.
- E. THE FOLLOWING AMC DRAWINGS ARE APPLICABLE FOR OUTLOADING AND STORAGE OF THE ITEMS COVERED BY THIS APPENDIX.
 - CARLOADING - - - - 19-48-4115-5PA1002
 - TRUCKLOADING - - - 19-48-4117-11PA1003
 - STORAGE - - - - - 19-48-4118-1-2-3-4-14-22PA1002
 - END OPENING ISO CONTAINER - - - - 19-48-4153-15PA1002
 - MILVAN - - - - - 19-48-4166-15PA1003
 - SIDE OPENING ISO CONTAINER - - - - 19-48-4267-15PA1009
- F. IF ITEMS COVERED HEREIN ARE UNITIZED PRIOR TO ISSUANCE OF THIS REVISION TO THIS APPENDIX, THE BOXES NEED NOT BE REUNITIZED SOLELY TO CONFORM TO THIS REVISION.
- G. THE UNITIZATION PROCEDURES DEPICTED HEREIN MAY ALSO BE USED FOR UNITIZING COUNTERMEASURE FLARES WHEN IDENTIFIED BY DIFFERENT NATIONAL STOCK NUMBERS (NSN) THAN WHAT IS SHOWN ON PAGE 2, PROVIDED THE BOX PACK DOES NOT VARY FROM WHAT IS DELINEATED HEREIN. THE EXPLOSIVE CLASSIFICATION OF OTHER ITEMS MAY BE DIFFERENT THAN WHAT IS SHOWN.
- H. THE STYLE 1A PALLET DELINEATED IN THE DETAIL AT LEFT NEED NOT HAVE CHAMFERS OR STRAP SLOTS AS SPECIFIED WITHIN MILITARY SPECIFICATION MIL-P-15011 WHEN USED FOR THE UNITIZATION OF ITEMS COVERED BY THIS APPENDIX.
- J. FOR DETAILS OF THE PPP-B-621 WOODEN BOX SEE SPI F01-038-5111.

VERTICAL PIECE, 2" X 4" X BOX HEIGHT MINUS 3/4" (4 REQD).

TIE PIECE, 1" X 4" X BOX WIDTH (2 REQD). NAIL TO LONGITUDINAL PIECES W/2-6d NAILS AT EACH END AND TO LATERAL PIECE W/2-6d NAILS.



FILL PIECE, 2" X 6" (RIPPED TO FIT) X BOX LENGTH MINUS 3" (AS REQD). NAIL TO VERTICAL PIECES W/2-10d NAILS AT EACH END. NOTE: WHEN A FILLER ASSEMBLY IS LOCATED IN AN OUTER STACK ON THE 35" SIDE OF THE PALLET, IT WILL REQUIRE A FILL PIECE AS SHOWN.

LATERAL PIECE, 2" X 4" X BOX WIDTH MINUS 3" (4 REQD). NAIL TO VERTICAL PIECES W/2-10d NAILS AT EACH END.

LONGITUDINAL PIECE, 2" X 4" X BOX LENGTH (4 REQD). NAIL TO VERTICAL PIECES W/2-10d NAILS AT EACH JOINT.

FILLER ASSEMBLY
(FOR MINUS ONE BOX)